

Percent Responsibility by Fire (DPA)

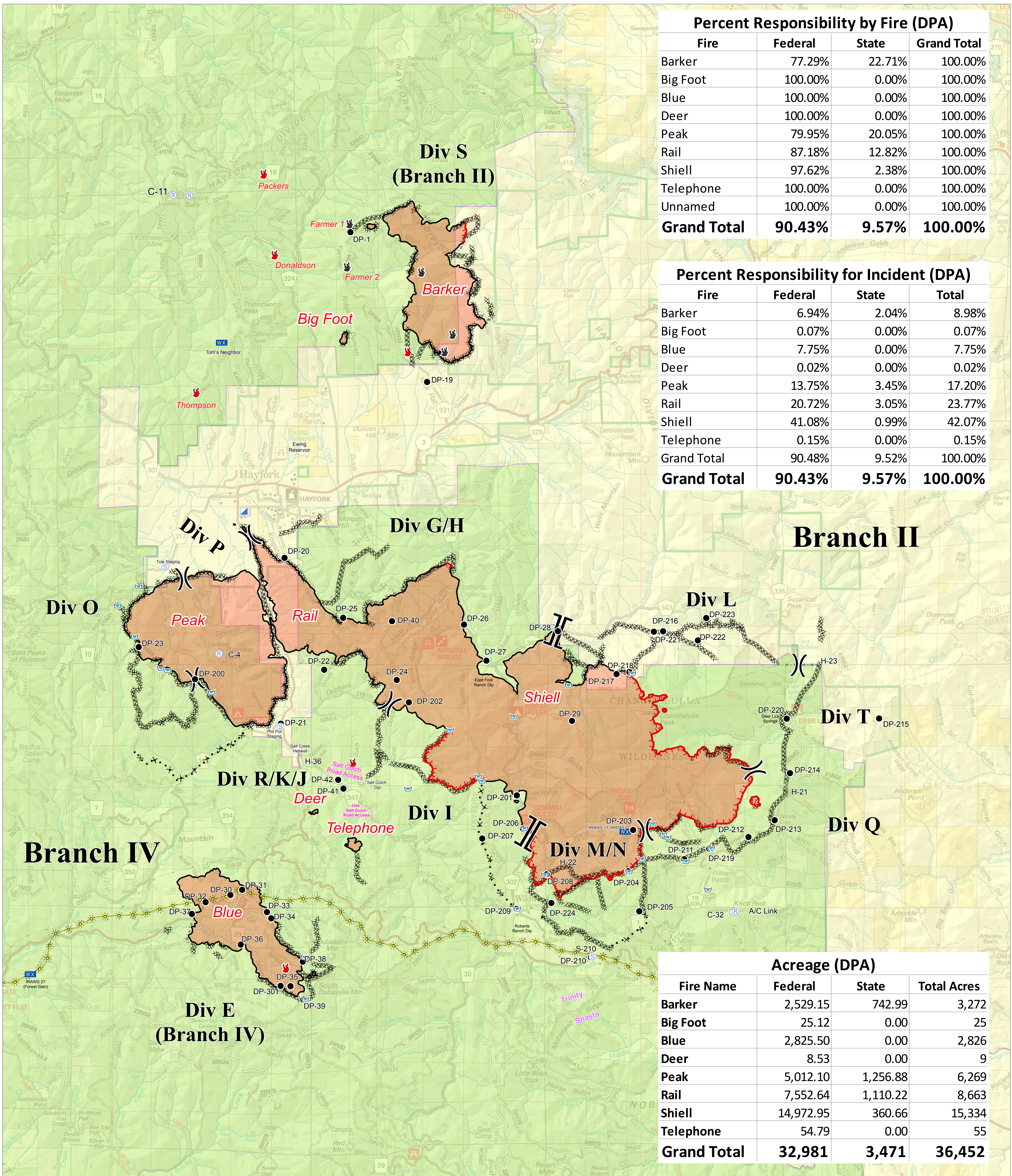
Fire	Federal	State	Grand Total
Barker	77.29%	22.71%	100.00%
Big Foot	100.00%	0.00%	100.00%
Blue	100.00%	0.00%	100.00%
Deer	100.00%	0.00%	100.00%
Peak	79.95%	20.05%	100.00%
Rail	87.18%	12.82%	100.00%
Shiell	97.62%	2.38%	100.00%
Telephone	100.00%	0.00%	100.00%
Unnamed	100.00%	0.00%	100.00%
Grand Total	90.43%	9.57%	100.00%

Percent Responsibility for Incident (DPA)

Fire	Federal	State	Total
Barker	6.94%	2.04%	8.98%
Big Foot	0.07%	0.00%	0.07%
Blue	7.75%	0.00%	7.75%
Deer	0.02%	0.00%	0.02%
Peak	13.75%	3.45%	17.20%
Rail	20.72%	3.05%	23.77%
Shiell	41.08%	0.99%	42.07%
Telephone	0.15%	0.00%	0.15%
Grand Total	90.43%	9.57%	100.00%

Acreage (DPA)

Fire Name	Federal	State	Total Acres
Barker	2,529.15	742.99	3,272
Big Foot	25.12	0.00	25
Blue	2,825.50	0.00	2,826
Deer	8.53	0.00	9
Peak	5,012.10	1,256.88	6,269
Rail	7,552.64	1,110.22	8,663
Shiell	14,972.95	360.66	15,334
Telephone	54.79	0.00	55
Grand Total	32,981	3,471	36,452

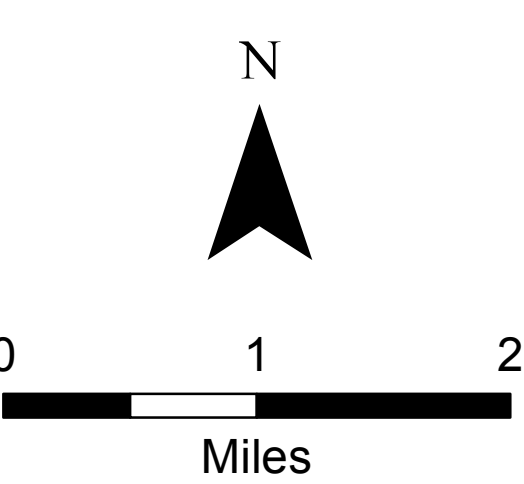


Cost Share DPA

Fork Complex
CA-SHF 002067
08/21/2015



- Drop Point
- Incident Command Post
- ⊙ Staging Area
- ⚡ PG & E Pipeline
- Completed Line
- ⊗ Proposed Dozer Line
- 🔥 Fire Location
- 📡 Mobile Weather Unit
- 🏠 Dip Site
- ⚡ Dozer Line
- 🔴 Uncontrolled Fire Edge
- 👤 Fire Location - Out
- 📡 Repeater
- || Branch
- ⊗ Division
- 🇺🇸 DPA AGENCY
- 🇨🇦 CDF
- 🇺🇸 USF



DPA