

Percent Responsibility by Fire (DPA)

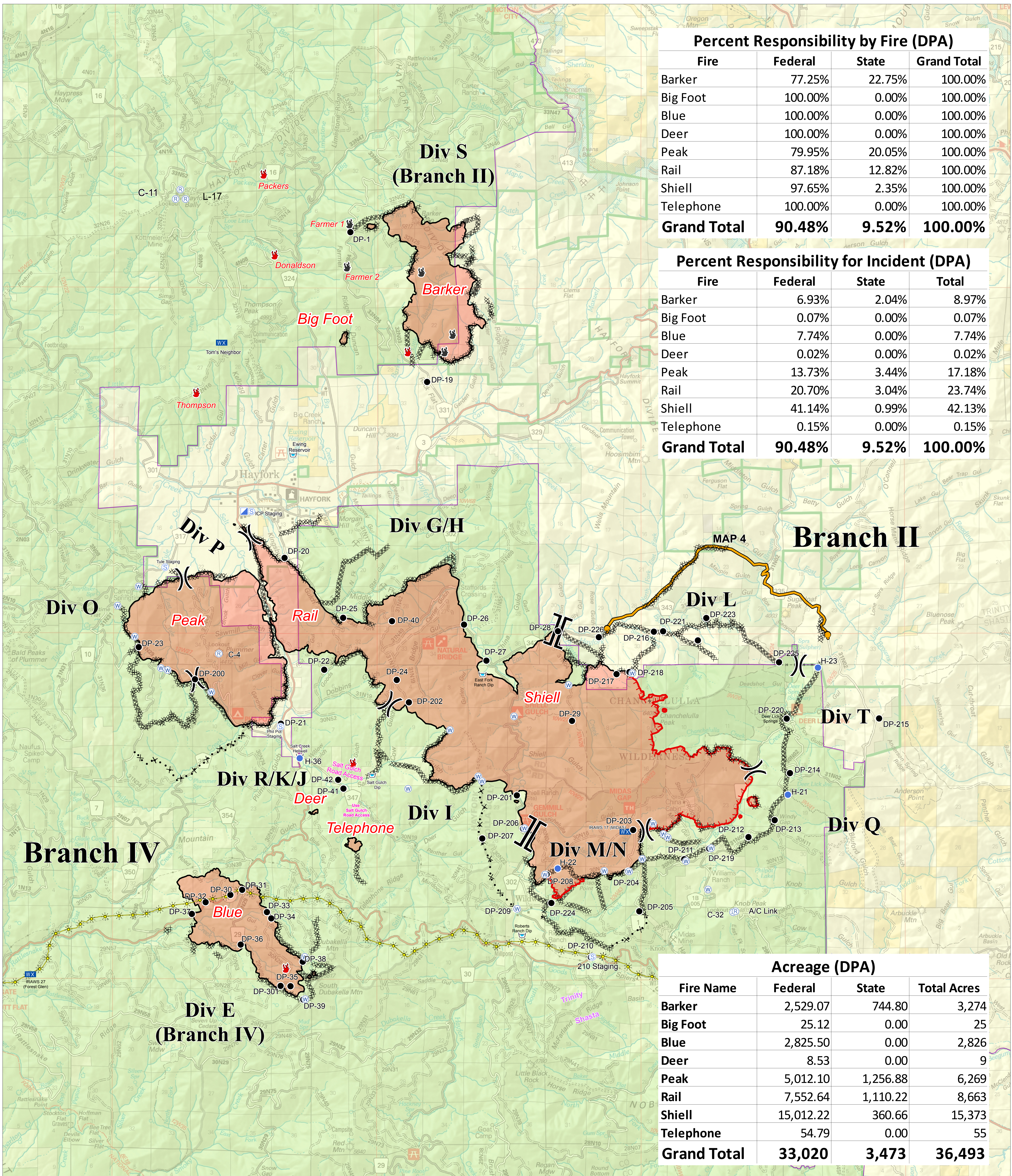
Fire	Federal	State	Grand Total
Barker	77.25%	22.75%	100.00%
Big Foot	100.00%	0.00%	100.00%
Blue	100.00%	0.00%	100.00%
Deer	100.00%	0.00%	100.00%
Peak	79.95%	20.05%	100.00%
Rail	87.18%	12.82%	100.00%
Shiell	97.65%	2.35%	100.00%
Telephone	100.00%	0.00%	100.00%
Grand Total	90.48%	9.52%	100.00%

Percent Responsibility for Incident (DPA)

Fire	Federal	State	Total
Barker	6.93%	2.04%	8.97%
Big Foot	0.07%	0.00%	0.07%
Blue	7.74%	0.00%	7.74%
Deer	0.02%	0.00%	0.02%
Peak	13.73%	3.44%	17.18%
Rail	20.70%	3.04%	23.74%
Shiell	41.14%	0.99%	42.13%
Telephone	0.15%	0.00%	0.15%
Grand Total	90.48%	9.52%	100.00%

Acreage (DPA)

Fire Name	Federal	State	Total Acres
Barker	2,529.07	744.80	3,274
Big Foot	25.12	0.00	25
Blue	2,825.50	0.00	2,826
Deer	8.53	0.00	9
Peak	5,012.10	1,256.88	6,269
Rail	7,552.64	1,110.22	8,663
Shiell	15,012.22	360.66	15,373
Telephone	54.79	0.00	55
Grand Total	33,020	3,473	36,493



Cost Share DPA

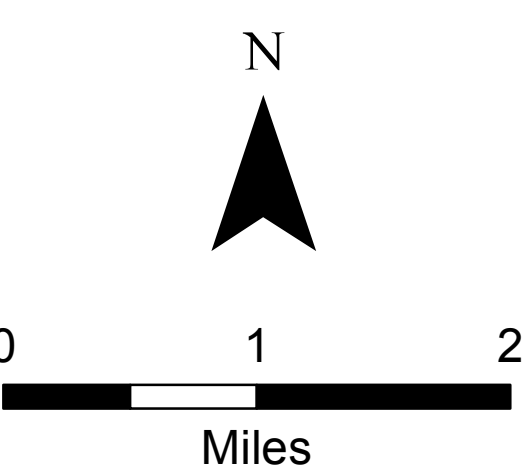
Fork Complex

CA-SHF 002067

08/22/2015



- 📍 Dip Site
- 📍 Helibase
- 📍 Repeater
- ⎓ Division
- ⋯ Handline
- 📍 MAPS Fork Complex
- Drop Point
- 📍 Helispot
- 📍 Staging Area
- 🌟 PG & E Pipeline
- ✖ Proposed Dozer Line
- 📍 DPA AGENCY
- 🔥 Fire Location
- 📍 Incident Command Post
- 📍 Dip Site
- Completed Line
- Uncontrolled Fire Edge
- 📍 Fire Location - Out
- 📍 Mobile Weather Unit
- ⎓ Branch
- ⊘ Dozer Line



DPA