

123°14'0"W 123°12'0"W 123°10'0"W 123°8'0"W 123°6'0"W 123°4'0"W 123°2'0"W 123°0'0"W 122°58'0"W 122°56'0"W

40°42'0"N  
40°40'0"N  
40°38'0"N  
40°36'0"N  
40°34'0"N  
40°32'0"N  
40°30'0"N  
40°28'0"N  
40°26'0"N  
40°24'0"N  
40°22'0"N  
40°20'0"N  
40°18'0"N

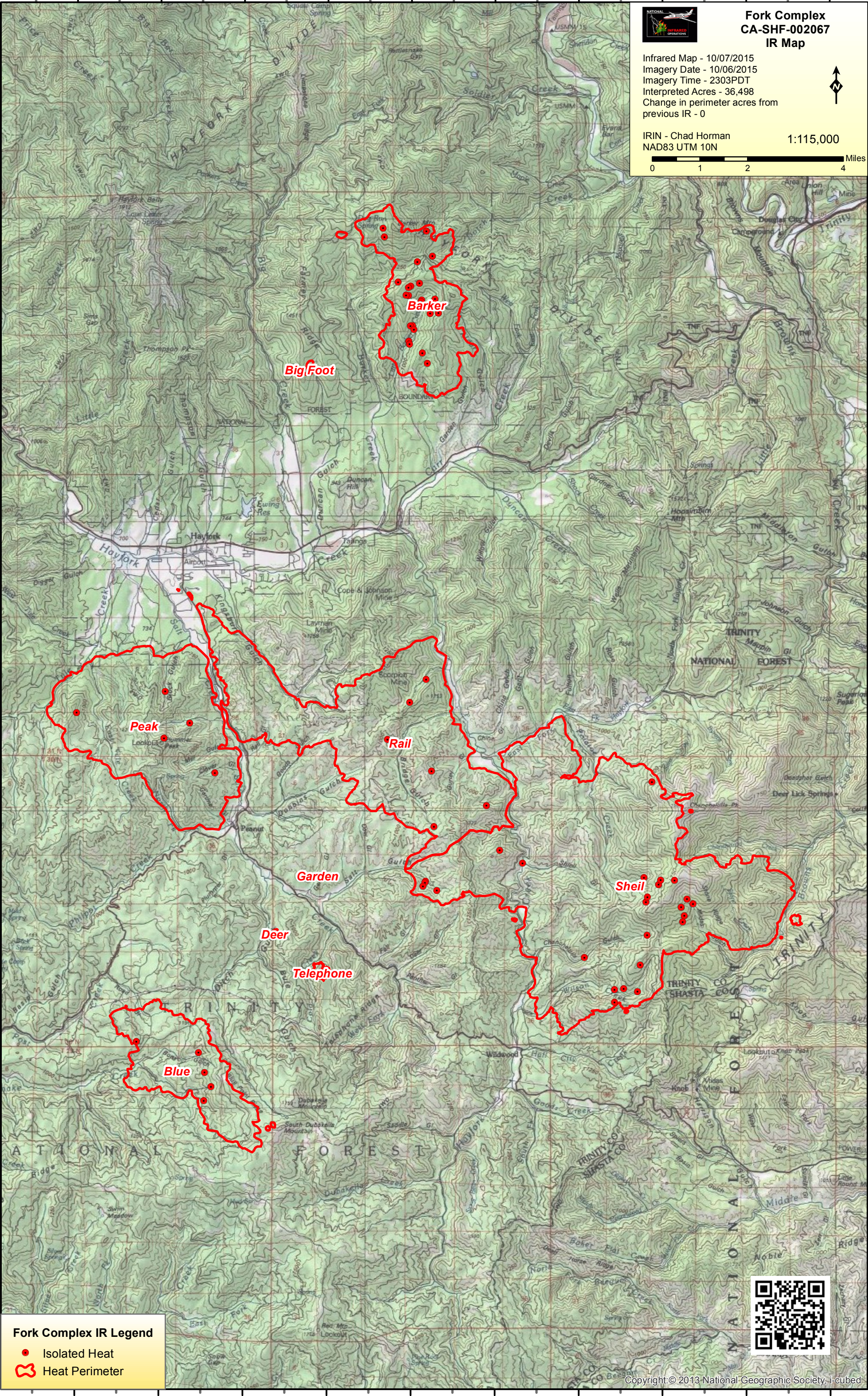
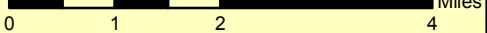


### Fork Complex CA-SHF-002067 IR Map

Infrared Map - 10/07/2015  
Imagery Date - 10/06/2015  
Imagery Time - 2303PDT  
Interpreted Acres - 36,498  
Change in perimeter acres from  
previous IR - 0



IRIN - Chad Horman  
NAD83 UTM 10N  
1:115,000



**Fork Complex IR Legend**

- Isolated Heat
- 🔴 Heat Perimeter



123°14'0"W 123°12'0"W 123°10'0"W 123°8'0"W 123°6'0"W 123°4'0"W 123°2'0"W 123°0'0"W 122°58'0"W 122°56'0"W