

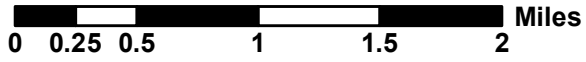
123°13'0"W 123°12'0"W 123°11'0"W 123°10'0"W 123°9'0"W 123°8'0"W 123°7'0"W 123°6'0"W 123°5'0"W

Peak Fire/Rail Fire(Fork Complex)

IR Heat Sources: 4 August 2015 2359 MDT

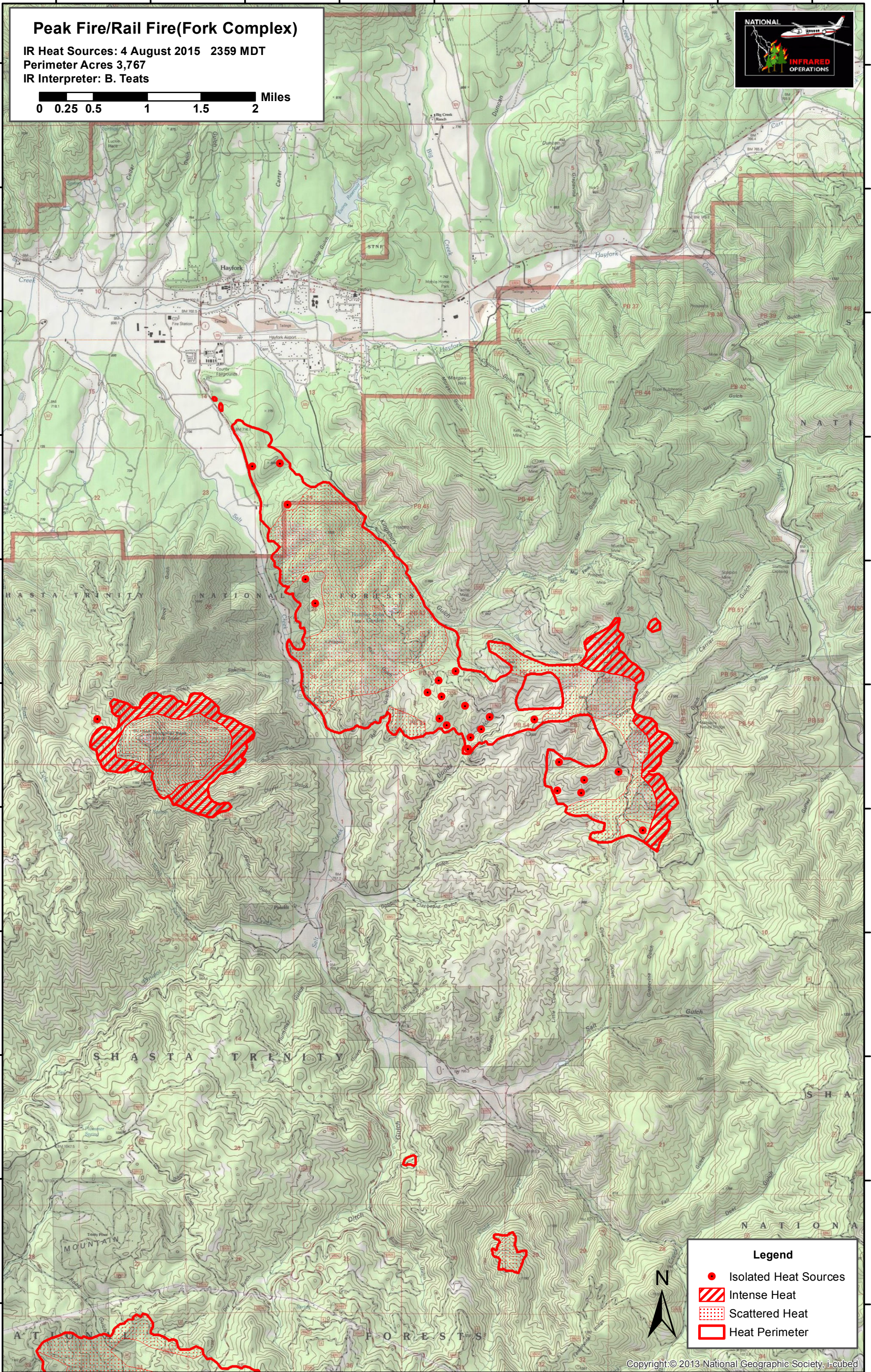
Perimeter Acres 3,767

IR Interpreter: B. Teats



40°35'0"N
40°34'0"N
40°33'0"N
40°32'0"N
40°31'0"N
40°30'0"N
40°29'0"N
40°28'0"N
40°27'0"N
40°26'0"N
40°25'0"N

40°35'0"N
40°34'0"N
40°33'0"N
40°32'0"N
40°31'0"N
40°30'0"N
40°29'0"N
40°28'0"N
40°27'0"N
40°26'0"N
40°25'0"N



Legend

- Isolated Heat Sources
- ▨ Intense Heat
- ⋯ Scattered Heat
- ▭ Heat Perimeter



123°13'0"W 123°12'0"W 123°11'0"W 123°10'0"W 123°9'0"W 123°8'0"W 123°7'0"W 123°6'0"W 123°5'0"W