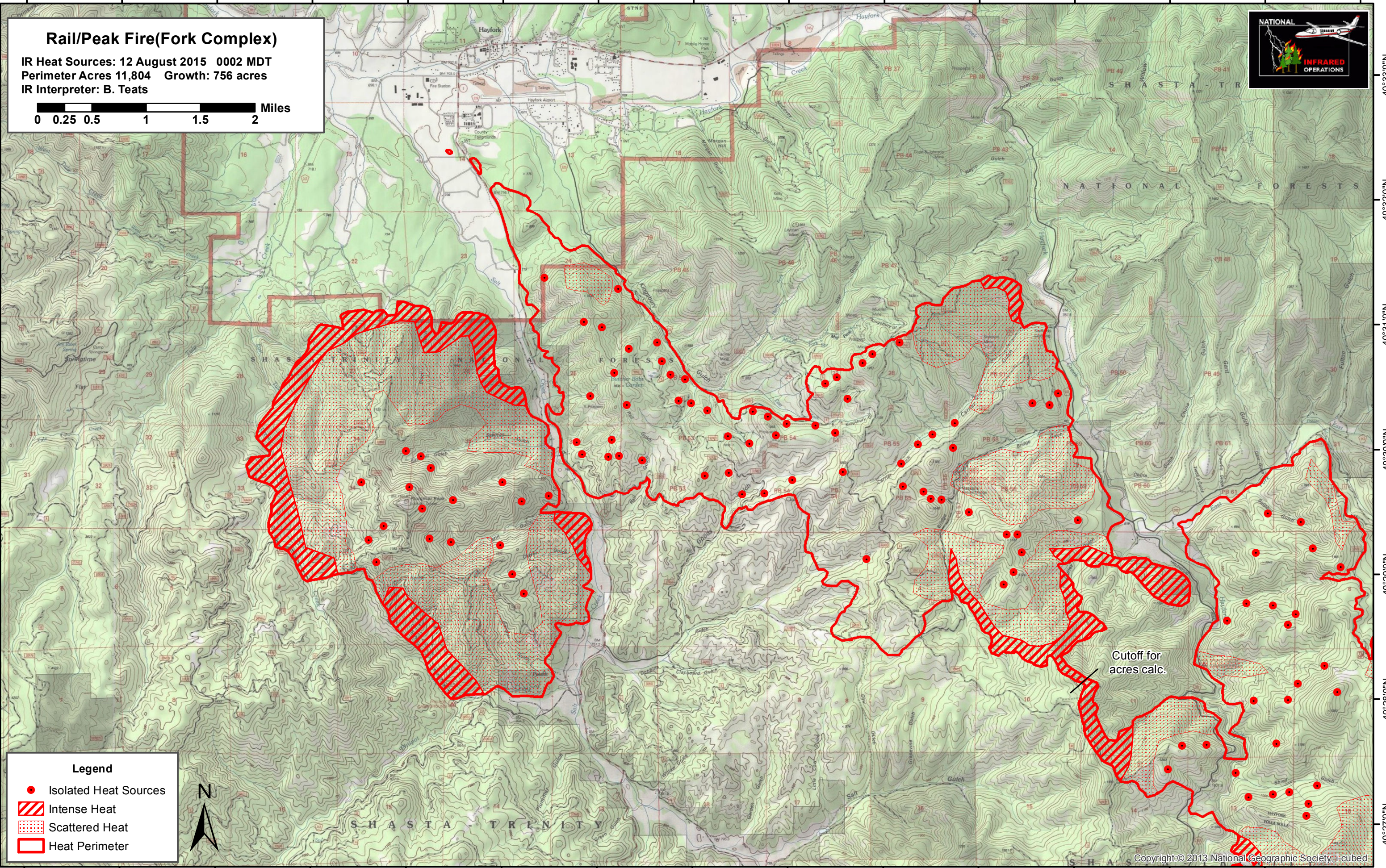
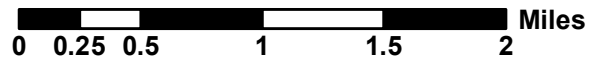


123°16'0"W 123°15'0"W 123°14'0"W 123°13'0"W 123°12'0"W 123°11'0"W 123°10'0"W 123°9'0"W 123°8'0"W 123°7'0"W 123°6'0"W 123°5'0"W 123°4'0"W 123°3'0"W 123°2'0"W



Rail/Peak Fire(Fork Complex)
IR Heat Sources: 12 August 2015 0002 MDT
Perimeter Acres 11,804 Growth: 756 acres
IR Interpreter: B. Teats



Legend

- Isolated Heat Sources
- ▨ Intense Heat
- ▤ Scattered Heat
- ▭ Heat Perimeter



Cutoff for acres calc.

123°16'0"W 123°15'0"W 123°14'0"W 123°13'0"W 123°12'0"W 123°11'0"W 123°10'0"W 123°9'0"W 123°8'0"W 123°7'0"W 123°6'0"W 123°5'0"W 123°4'0"W 123°3'0"W 123°2'0"W