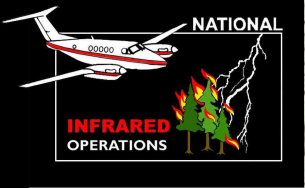


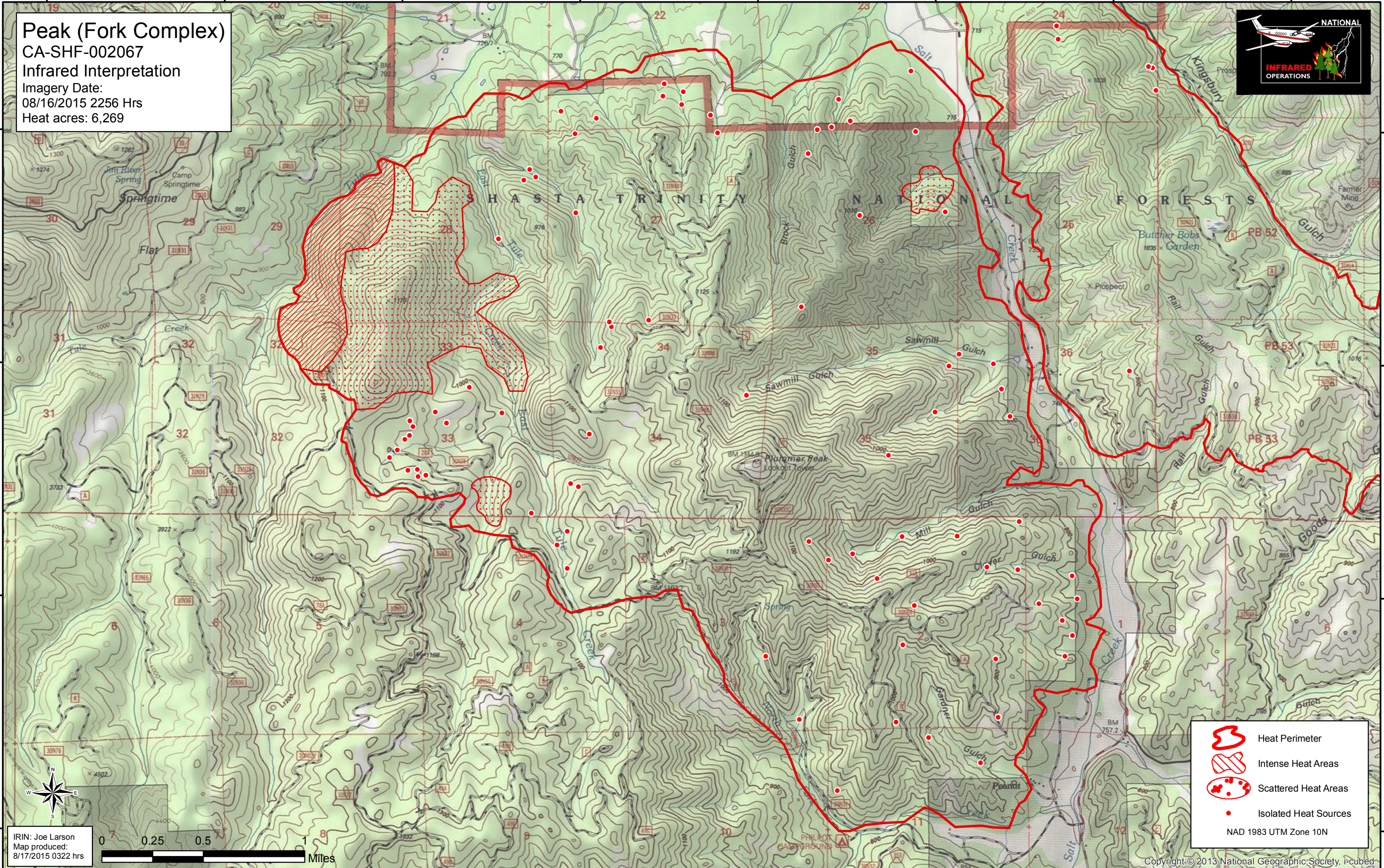
123°16'W 123°15'W 123°14'W 123°13'W 123°12'W 123°11'W 123°10'W 123°9'W





Peak (Fork Complex)
CA-SHF-002067
Infrared Interpretation
Imagery Date:
08/16/2015 2256 Hrs
Heat acres: 6,269



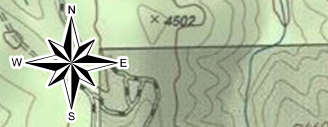
40°31'N
40°30'N
40°29'N
40°28'N

40°31'N
40°30'N
40°29'N
40°28'N



-  Heat Perimeter
-  Intense Heat Areas
-  Scattered Heat Areas
-  Isolated Heat Sources

NAD 1983 UTM Zone 10N



IRIN: Joe Larson
Map produced:
8/17/2015 0322 hrs

0 0.25 0.5 1 Miles

123°16'W 123°15'W 123°14'W 123°13'W 123°12'W 123°11'W 123°10'W 123°9'W