

123°16'0"W 123°14'0"W 123°12'0"W 123°10'0"W 123°8'0"W 123°6'0"W 123°4'0"W 123°2'0"W 123°0'0"W 122°58'0"W 122°56'0"W



Fork Complex CA-SHF-002067 Potential Heat Map

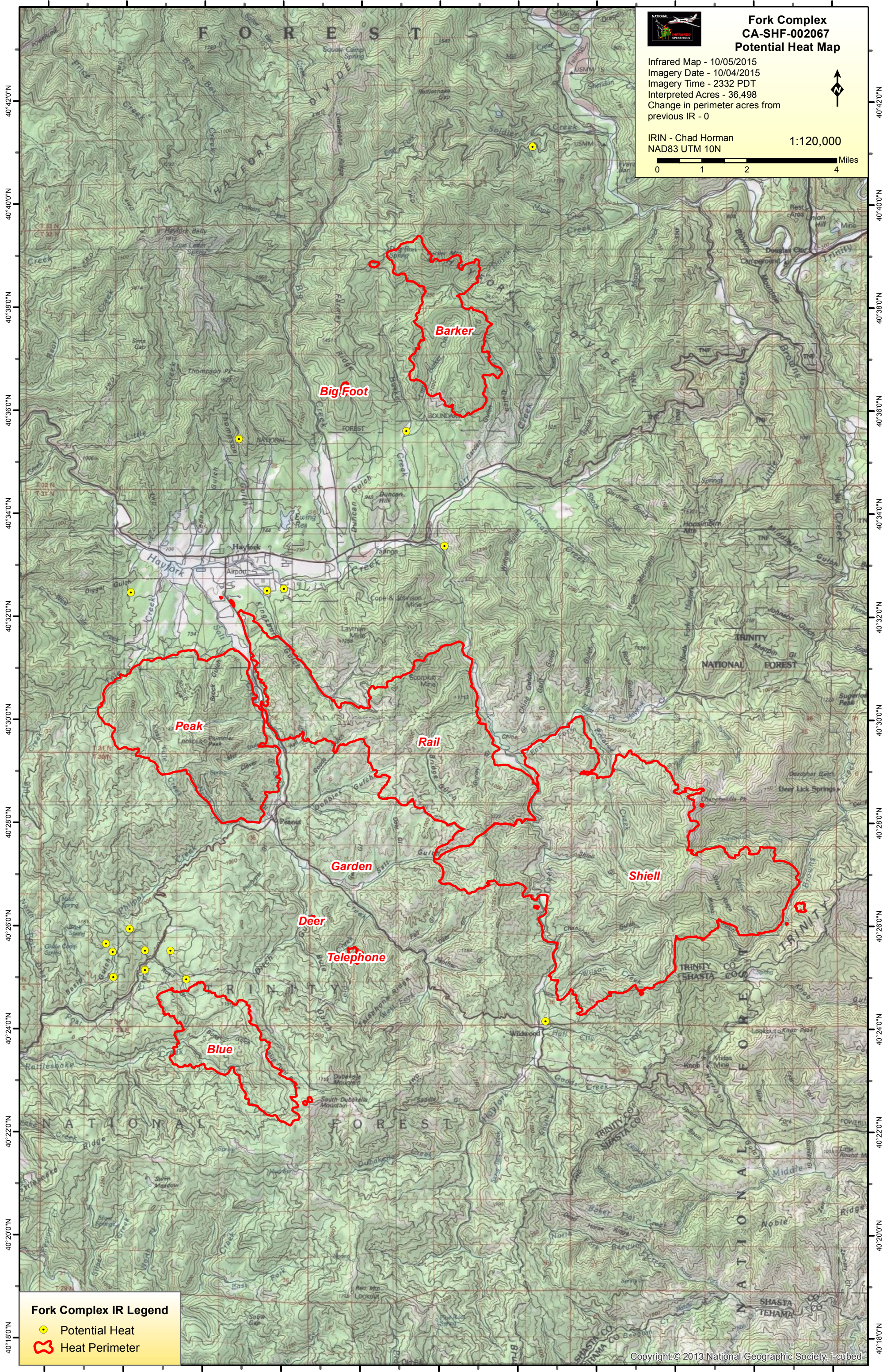
Infrared Map - 10/05/2015
Imagery Date - 10/04/2015
Imagery Time - 2332 PDT
Interpreted Acres - 36,498
Change in perimeter acres from
previous IR - 0



IRIN - Chad Horman
NAD83 UTM 10N

1:120,000

0 1 2 4 Miles



Fork Complex IR Legend

- Potential Heat
- Heat Perimeter

123°16'0"W 123°14'0"W 123°12'0"W 123°10'0"W 123°8'0"W 123°6'0"W 123°4'0"W 123°2'0"W 123°0'0"W 122°58'0"W 122°56'0"W