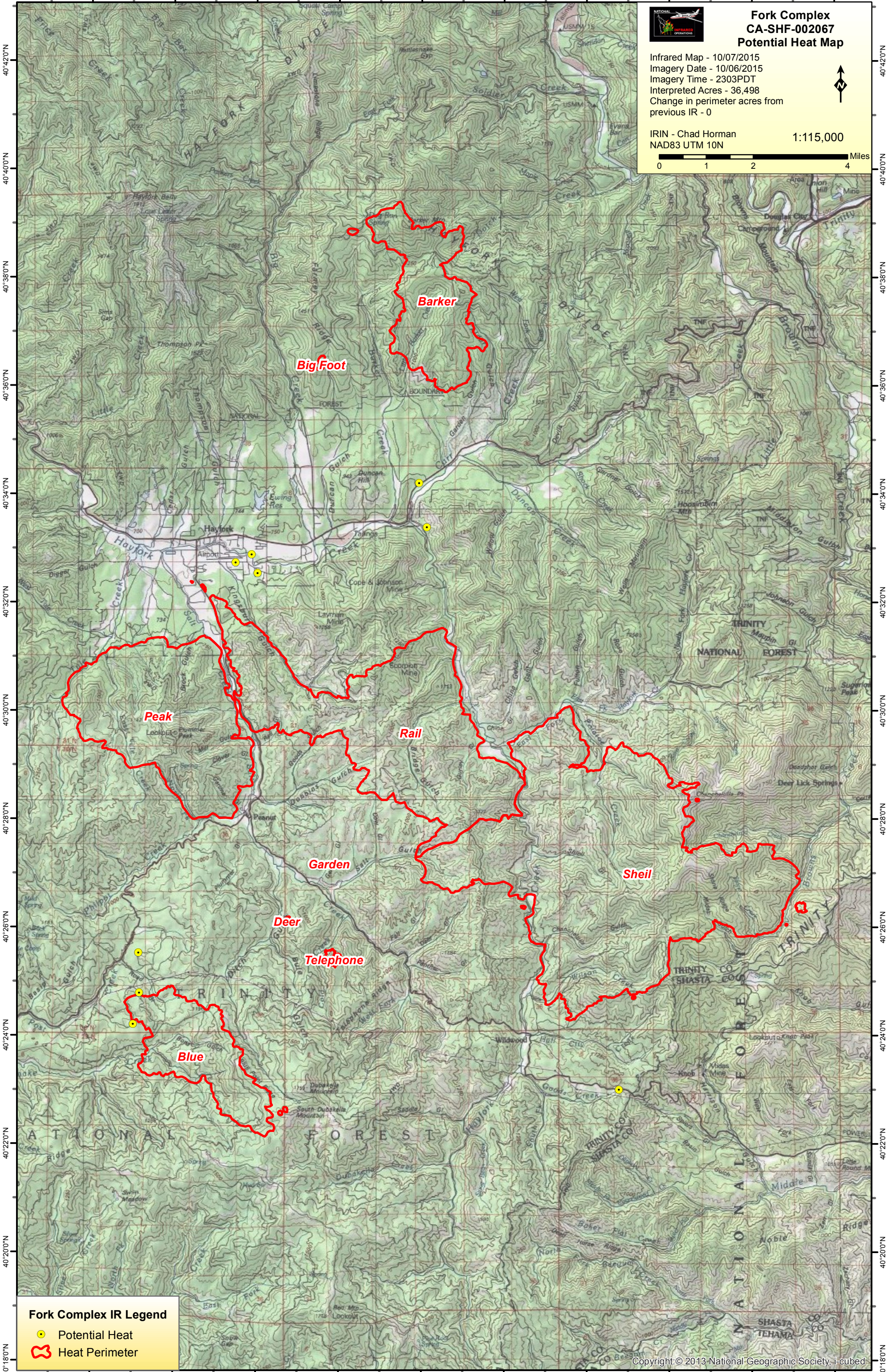


123°14'0"W 123°12'0"W 123°10'0"W 123°8'0"W 123°6'0"W 123°4'0"W 123°2'0"W 123°0'0"W 122°58'0"W 122°56'0"W

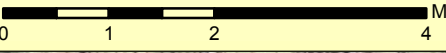


Fork Complex CA-SHF-002067 Potential Heat Map

Infrared Map - 10/07/2015
Imagery Date - 10/06/2015
Imagery Time - 2303PDT
Interpreted Acres - 36,498
Change in perimeter acres from
previous IR - 0



IRIN - Chad Horman 1:115,000
NAD83 UTM 10N



Fork Complex IR Legend

- Potential Heat
- Heat Perimeter

123°14'0"W 123°12'0"W 123°10'0"W 123°8'0"W 123°6'0"W 123°4'0"W 123°2'0"W 123°0'0"W 122°58'0"W 122°56'0"W