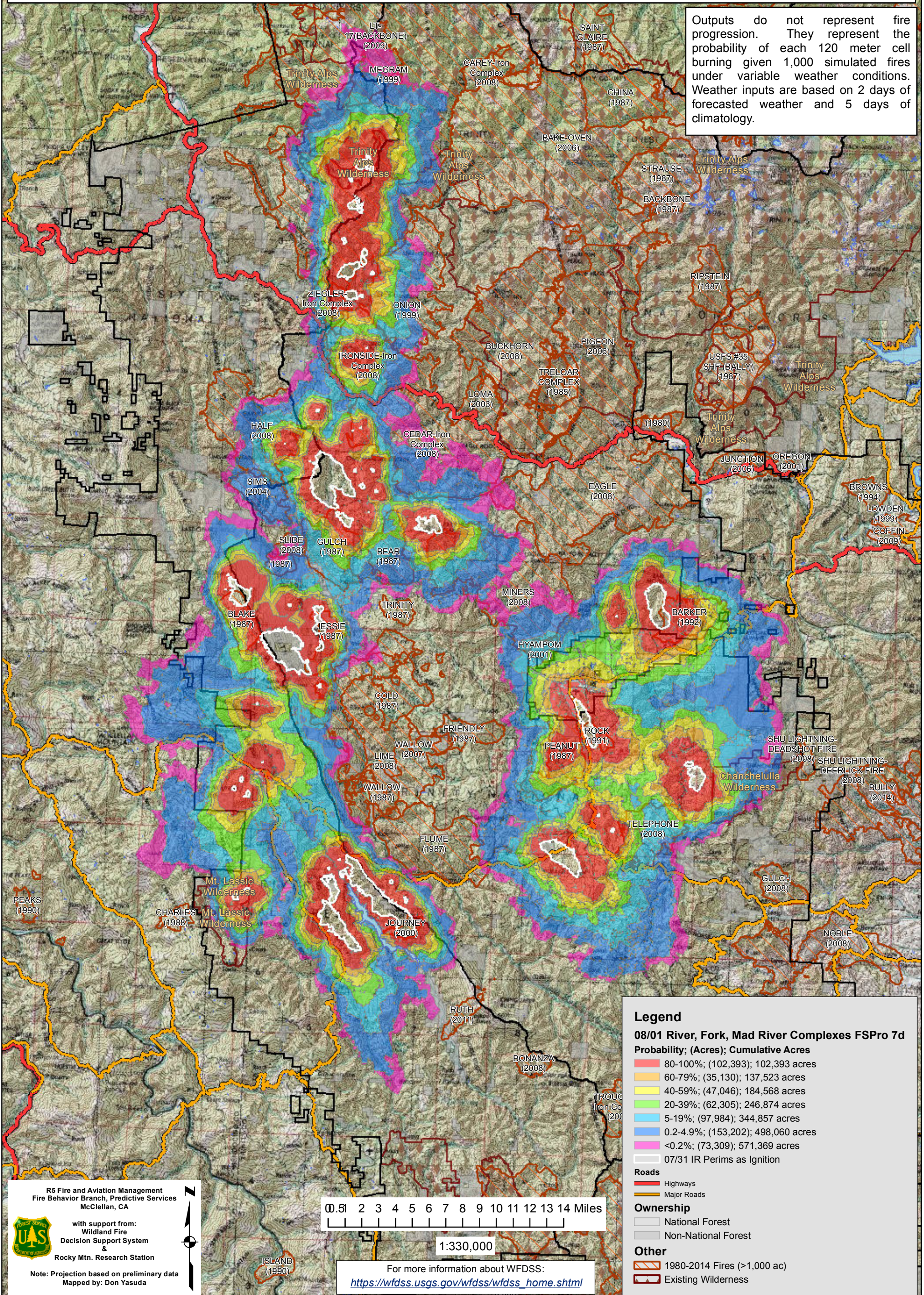


August 1, 2015

**WFDSS - FSPRO PROBABILITY: River Complex, Fork Complex, and Mad River Complex**  
**08/01 - 7 DAYS - 120m Res; 1000 Fire Sim**  
**ERC: 40503 - HAYFORK (1.6 miles); WINDS: 40519 - UNDERWOOD (22.6 miles)**  
**File: 8.1 7 day FSPro River+Fork+Mad River Complexes; Analyst: Larry Hood**

Notes: CAUTION: Big picture situational awareness only. Models all 7.31 2009 hr. IR fires showing heat. Will update for individual fires or complexes as time permits. Limitation is use of one weather station for ERC (Hayfork RAWs) and winds (Underwood RAWs) which will not be representative of all fires. Model assumes NO suppression action. **Expect spread into low probability surfaces early in the analysis period due to extreme drought.**

Outputs do not represent fire progression. They represent the probability of each 120 meter cell burning given 1,000 simulated fires under variable weather conditions. Weather inputs are based on 2 days of forecasted weather and 5 days of climatology.



**Legend**

**08/01 River, Fork, Mad River Complexes FSPro 7d**

**Probability; (Acres); Cumulative Acres**

- 80-100%; (102,393); 102,393 acres
- 60-79%; (35,130); 137,523 acres
- 40-59%; (47,046); 184,568 acres
- 20-39%; (62,305); 246,874 acres
- 5-19%; (97,984); 344,857 acres
- 0.2-4.9%; (153,202); 498,060 acres
- <0.2%; (73,309); 571,369 acres
- 07/31 IR Perims as Ignition

**Roads**

- Highways
- Major Roads

**Ownership**

- National Forest
- Non-National Forest

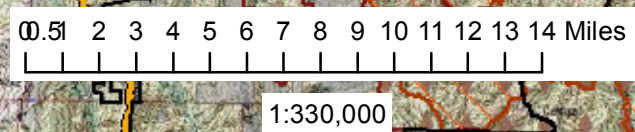
**Other**

- 1980-2014 Fires (>1,000 ac)
- Existing Wilderness

R5 Fire and Aviation Management  
 Fire Behavior Branch, Predictive Services  
 McClellan, CA

with support from:  
 Wildland Fire  
 Decision Support System &  
 Rocky Mtn. Research Station

Note: Projection based on preliminary data  
 Mapped by: Don Yasuda



For more information about WFDSS:  
[https://wfdss.usgs.gov/wfdss/wfdss\\_home.shtml](https://wfdss.usgs.gov/wfdss/wfdss_home.shtml)