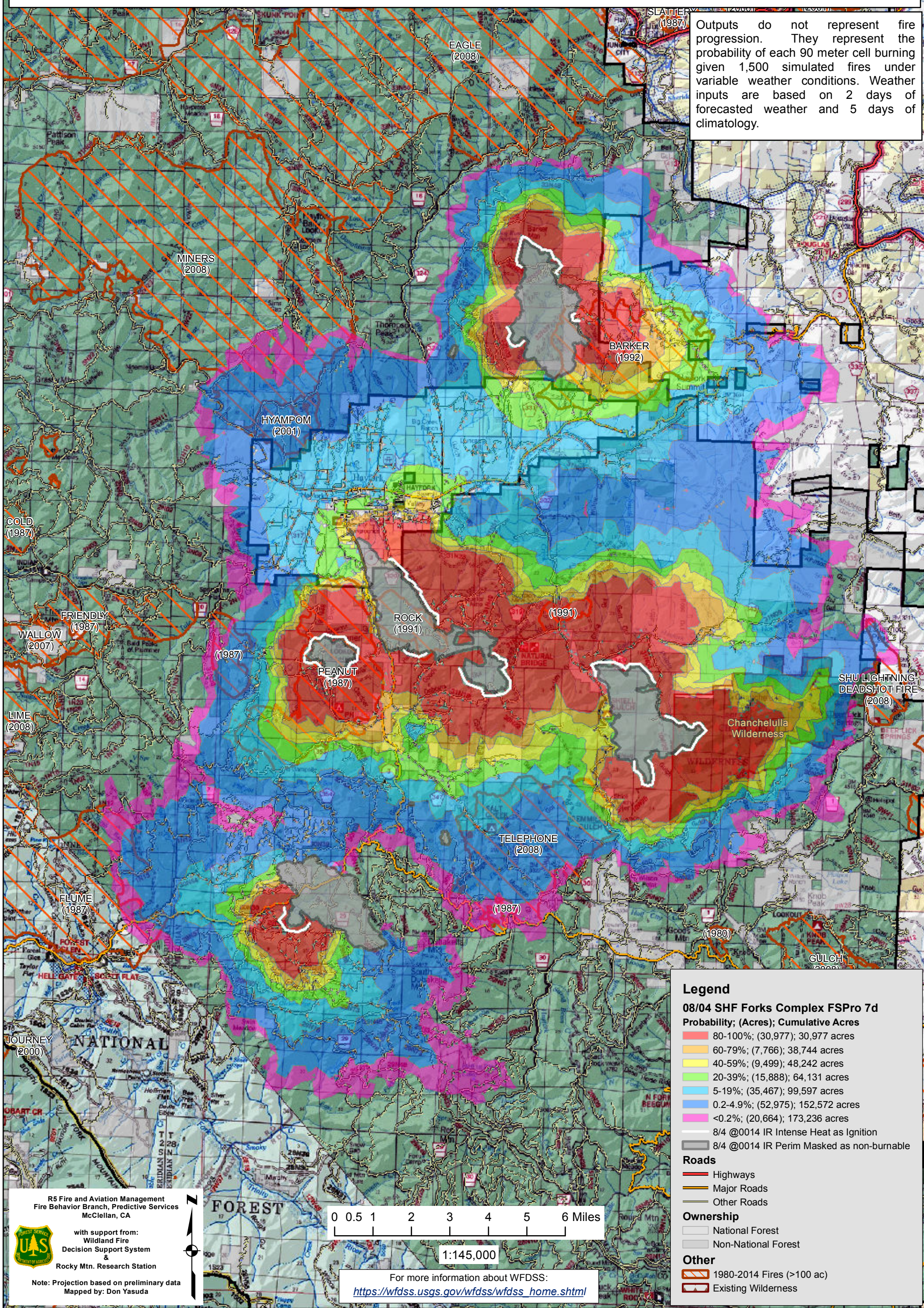


August 4, 2015

WFDSS - FSPRO PROBABILITY: SHF Fork Complex (2015-CASHF-002067)
08/04 - 7 DAYS - 90m Res; 1500 Fire Sim
ERC: 40503 - HAYFORK (1.6 miles); WINDS: 40503 - HAYFORK (1.6 miles)
File: 8.4 Updated 7 day FSPRO; Analyst: Larry Hood

Notes: 8/4 to 8/10 7 day FSPRO analysis for 5 larger fires in the Complex: Barker, Rail, Post, Blue, and Bigfoot. Masks 8/4 0014 IR perimeters, 10,318 acres as non-burnable and uses 8/4 0014 IR intense heat for ignition file. Model assumes NO suppression action. **Expect spread into low probability surfaces early in the analysis period due to extreme drought.**

Outputs do not represent fire progression. They represent the probability of each 90 meter cell burning given 1,500 simulated fires under variable weather conditions. Weather inputs are based on 2 days of forecasted weather and 5 days of climatology.



Legend

08/04 SHF Forks Complex FSPRO 7d

Probability; (Acres); Cumulative Acres

- 80-100%; (30,977); 30,977 acres
- 60-79%; (7,766); 38,744 acres
- 40-59%; (9,499); 48,242 acres
- 20-39%; (15,888); 64,131 acres
- 5-19%; (35,467); 99,597 acres
- 0.2-4.9%; (52,975); 152,572 acres
- <0.2%; (20,664); 173,236 acres

- 8/4 @0014 IR Intense Heat as Ignition
- 8/4 @0014 IR Perim Masked as non-burnable

Roads

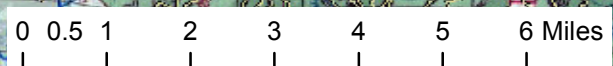
- Highways
- Major Roads
- Other Roads

Ownership

- National Forest
- Non-National Forest

Other

- 1980-2014 Fires (>100 ac)
- Existing Wilderness



1:145,000

For more information about WFDSS:
https://wfdss.usgs.gov/wfdss/wfdss_home.shtml

R5 Fire and Aviation Management
 Fire Behavior Branch, Predictive Services
 McClellan, CA

with support from:
 Wildland Fire
 Decision Support System &
 Rocky Mtn. Research Station

Note: Projection based on preliminary data
 Mapped by: Don Yasuda