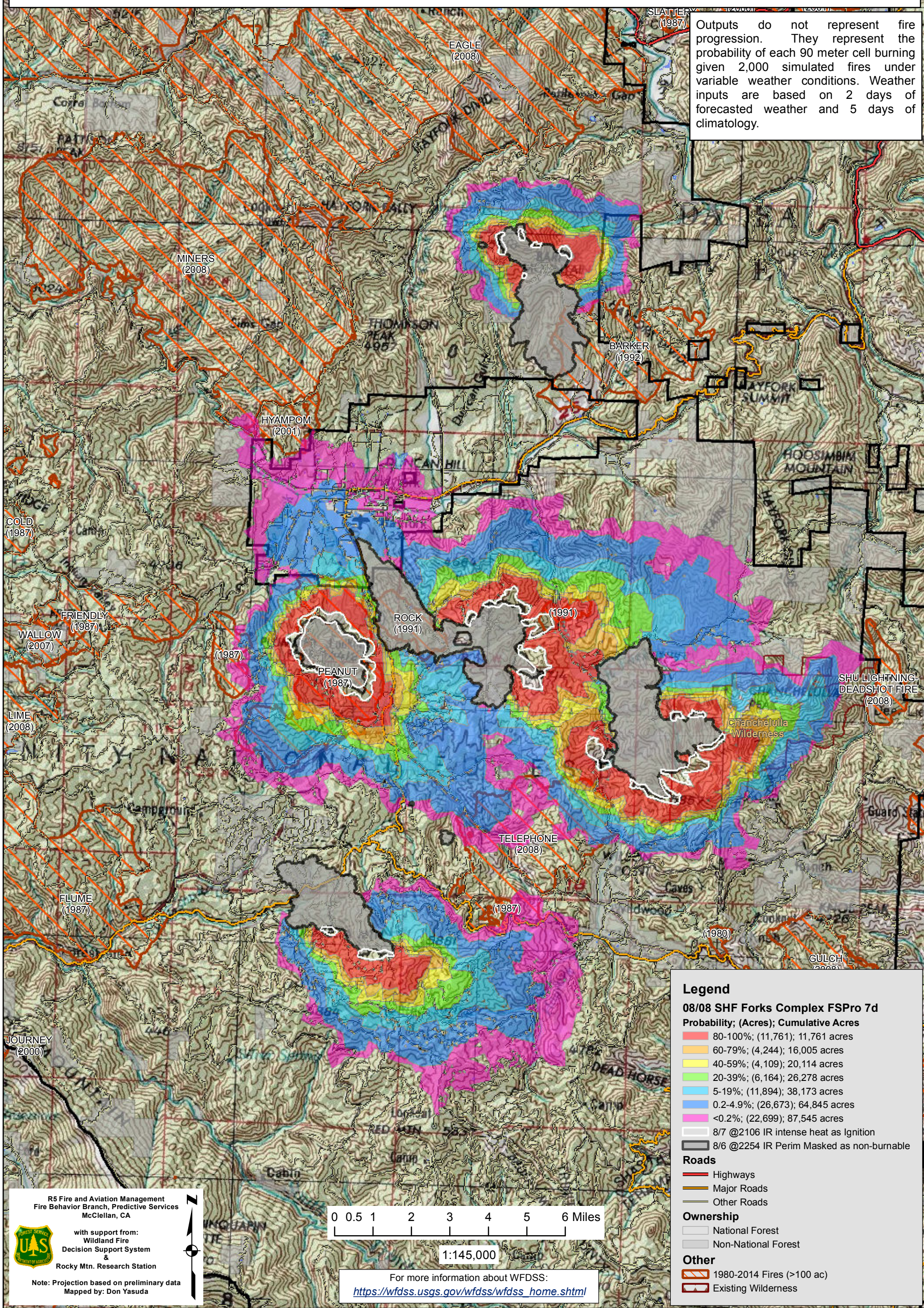


August 8, 2015

WFDSS - FSPRO PROBABILITY: SHF Fork Complex (2015-CASHF-002067)
08/08 - 7 DAYS - 90m Res; 2000 Fire Sim
ERC: 40503 - HAYFORK (1.6 miles); WINDS: 40503 - HAYFORK (1.6 miles)
File: 8.8 Updated 7 day FSPRO; Analyst: Larry Hood

Notes: Updated 7 day FSPRO analysis for 8/8 to 8/14. Masks 8/6 2254 IR perimeters as non-burnable and uses 8/7 2106 IR intense heat for ignition file to capture areas of fire showing recent growth. No barrier files used and model assumes no suppression action. **Expect spread into low probability surfaces early in the analysis period due to extreme drought conditions and/or forecasted increase in SW winds.**

Outputs do not represent fire progression. They represent the probability of each 90 meter cell burning given 2,000 simulated fires under variable weather conditions. Weather inputs are based on 2 days of forecasted weather and 5 days of climatology.



Legend

08/08 SHF Forks Complex FSPRO 7d

Probability; (Acres); Cumulative Acres

- 80-100%; (11,761); 11,761 acres
- 60-79%; (4,244); 16,005 acres
- 40-59%; (4,109); 20,114 acres
- 20-39%; (6,164); 26,278 acres
- 5-19%; (11,894); 38,173 acres
- 0.2-4.9%; (26,673); 64,845 acres
- <0.2%; (22,699); 87,545 acres

- 8/7 @2106 IR intense heat as Ignition
- 8/6 @2254 IR Perim Masked as non-burnable

Roads

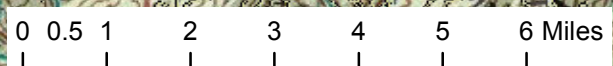
- Highways
- Major Roads
- Other Roads

Ownership

- National Forest
- Non-National Forest

Other

- 1980-2014 Fires (>100 ac)
- Existing Wilderness



1:145,000

For more information about WFDSS:
https://wfdss.usgs.gov/wfdss/wfdss_home.shtml

R5 Fire and Aviation Management
 Fire Behavior Branch, Predictive Services
 McClellan, CA

with support from:
 Wildland Fire
 Decision Support System
 &
 Rocky Mtn. Research Station

Note: Projection based on preliminary data
 Mapped by: Don Yasuda