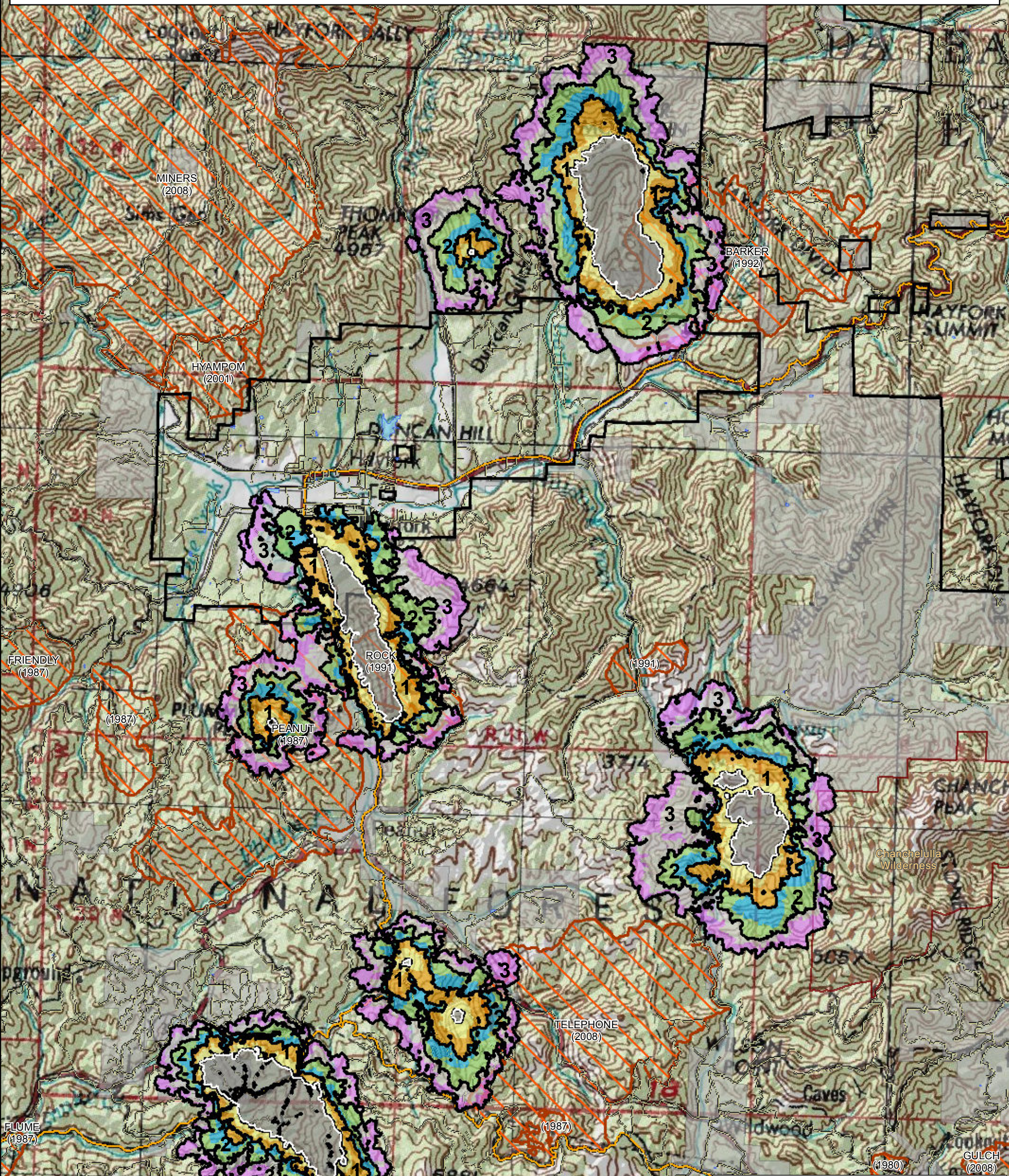


WFDSS - NEAR TERM FIRE BEHAVIOR ANALYSIS: Fork Complex - East side (2015-CASHF-002067)
08/01 - 3 DAYS - 12hr Burn Periods (0900-2100) - 30m Res
Fuel Moisture & Wx: 40503 - HAYFORK (1.6 miles)
File:8.1 3 day Near Term Fire Behavior East; Analyst: Larry Hood

Note: Initial 8/1 3 day Near Term analysis for 4 large polygons and approximately 4 smaller fires on East side of Fork Complex. Ignition files used are from 7/31 20:09 IR flight. Model assumes no suppression action. Fire spread may be under predicted due to extreme drought conditions. **Colors showing 6 hour time steps.**



Legend

8/1 Fork Complex (East side) NTFB 3d 12hr

- Burn Periods (12 hr)
- 7/31 @2009 IR Perims as Ignition

Roads

- Highways
- Major Roads
- Other Roads


Ownership

- National Forest
- Non-National Forest

Other

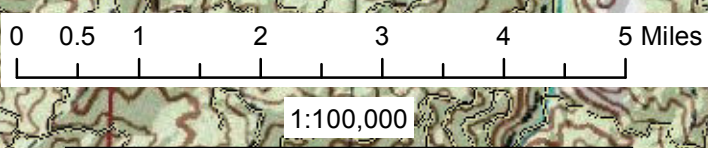
- 1980-2014 Fires (>100 ac)
- Existing Wilderness

R5 Fire and Aviation Management
Fire Behavior Branch, Predictive Services
McClellan, CA



with support from:
Wildland Fire
Decision Support System
&
Rocky Mtn. Research Station

Note: Projection based on preliminary data
Mapped by: Don Yasuda



For more information about WFDSS:
https://wfdss.usgs.gov/wfdss/wfdss_home.shtml