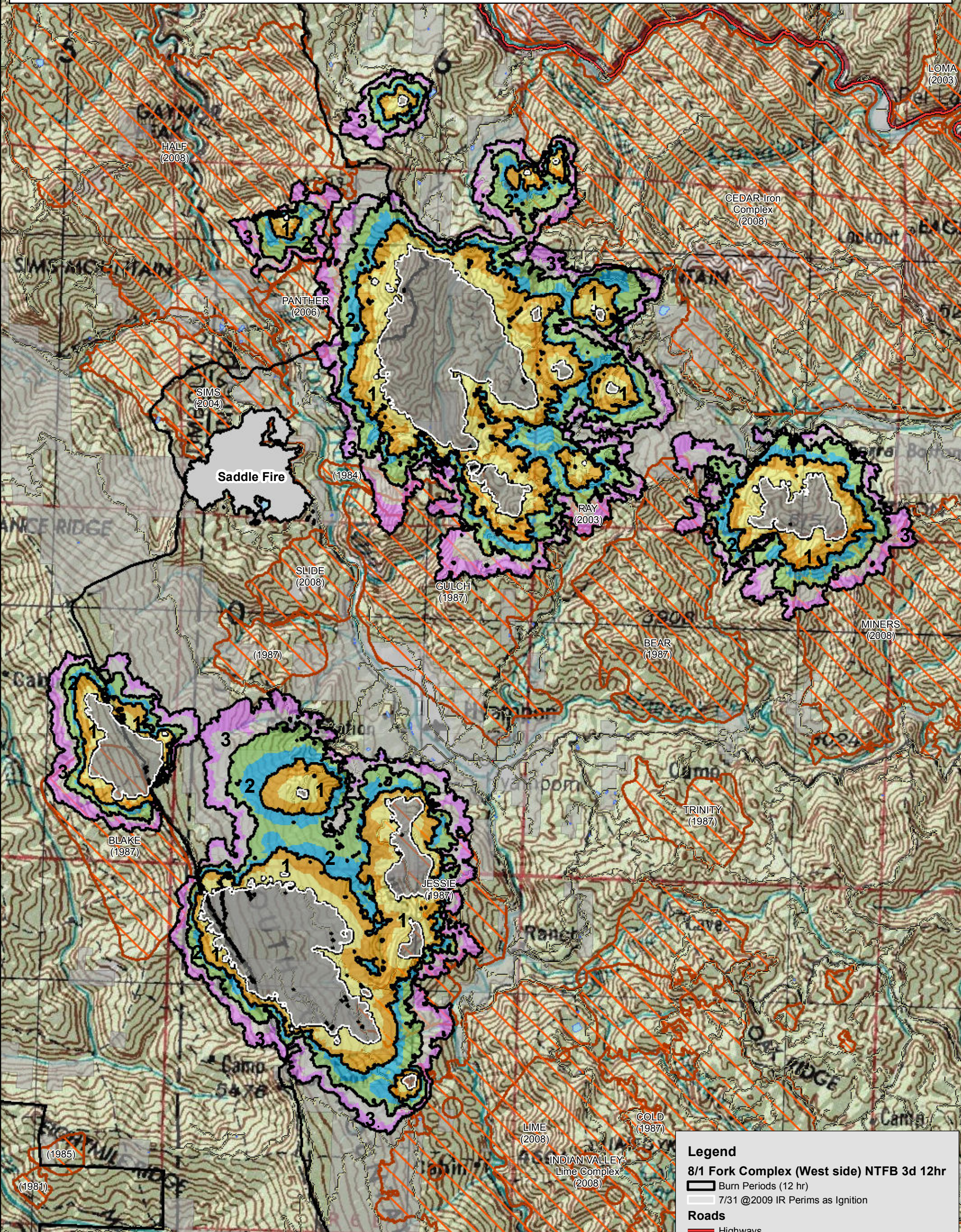


Note: Initial 8/1 3 day Near Term analysis for numerous large and small IR heat signatures from 7/31 20:09 IR flight on West side of Fork Complex. Model assumes no suppression action. Fire spread may be under predicted due to extreme drought conditions. Colors showing 6 hour time steps.



**Legend**

**8/1 Fork Complex (West side) NTFB 3d 12hr**

- Burn Periods (12 hr)
- 7/31 @2009 IR Perims as Ignition

**Roads**

- Highways
- Major Roads
- Other Roads

**Ownership**

- National Forest
- Non-National Forest

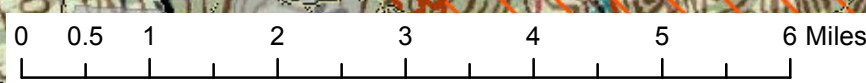
**Other**

- 1980-2014 Fires (>100 ac)

R5 Fire and Aviation Management  
Fire Behavior Branch, Predictive Services  
McClellan, CA

with support from:  
Wildland Fire  
Decision Support System &  
Rocky Mtn. Research Station

Note: Projection based on preliminary data  
Mapped by: Don Yasuda



1:95,000

For more information about WFDSS:  
[https://wfdss.usgs.gov/wfdss/wfdss\\_home.shtml](https://wfdss.usgs.gov/wfdss/wfdss_home.shtml)