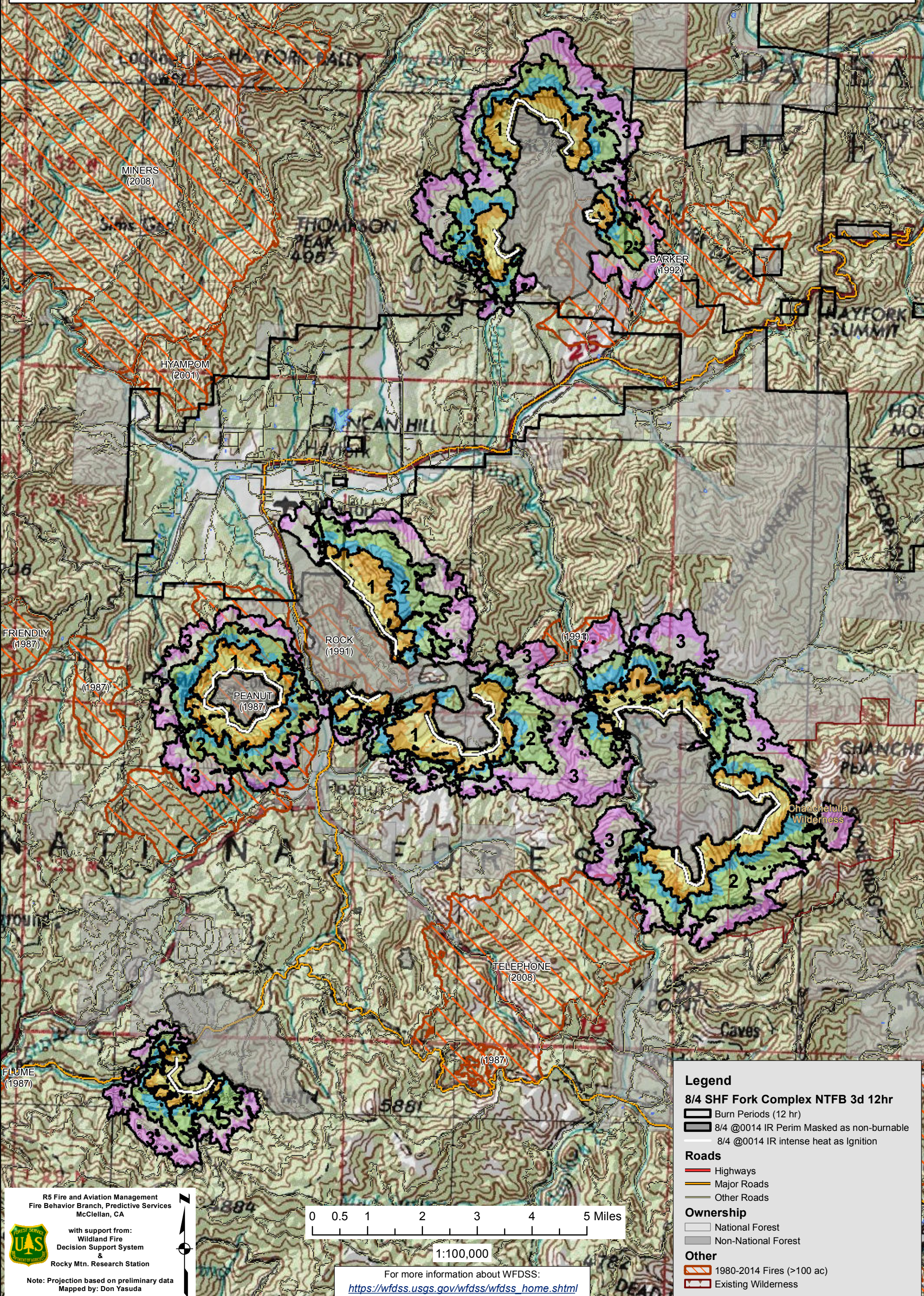


WFDSS - NEAR TERM FIRE BEHAVIOR ANALYSIS: SHF Fork Complex (2015-CASHF-002067)
08/04 - 3 DAYS - 12hr Burn Periods (0900-2100) - 30m Res
Fuel Moisture & Wx: 40503 - HAYFORK (1.6 miles)
File:8.4 to 8.6 3 day Near Term Fire Behavior; Analyst: Larry Hood

Note: Updated 3 day Near Term analysis, 8/4 to 8/6 for 5 larger fires in the Complex: Barker, Rail, Post, Blue, and Bigfoot. Masks 8/4 0014 IR perimeters, 10,318 acres as non-burnable and uses 8/4 0014 IR intense heat for ignition file. Model assumes no suppression action. **May under predict spread due to extreme drought conditions or increased atmospheric instability.** Colors showing 6 hour time steps.



Legend

8/4 SHF Fork Complex NTFB 3d 12hr

- Thick black line: Burn Periods (12 hr)
- Thin black line: 8/4 @0014 IR Perim Masked as non-burnable
- White line: 8/4 @0014 IR intense heat as Ignition

Roads

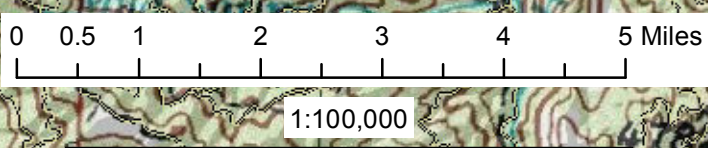
- Red line: Highways
- Orange line: Major Roads
- Grey line: Other Roads

Ownership


- Light grey: National Forest
- Dark grey: Non-National Forest

Other

- Orange hatching: 1980-2014 Fires (>100 ac)
- Red hatching: Existing Wilderness



R5 Fire and Aviation Management
Fire Behavior Branch, Predictive Services
McClellan, CA



with support from:
Wildland Fire
Decision Support System
&
Rocky Mtn. Research Station

Note: Projection based on preliminary data
Mapped by: Don Yasuda

For more information about WFDSS:
https://wfdss.usgs.gov/wfdss/wfdss_home.shtml