

August 06, 2015

Complex
(2008)

WFDSS - NEAR TERM FIRE BEHAVIOR ANALYSIS: SHF Fork Complex (2015-CASHF-002067)

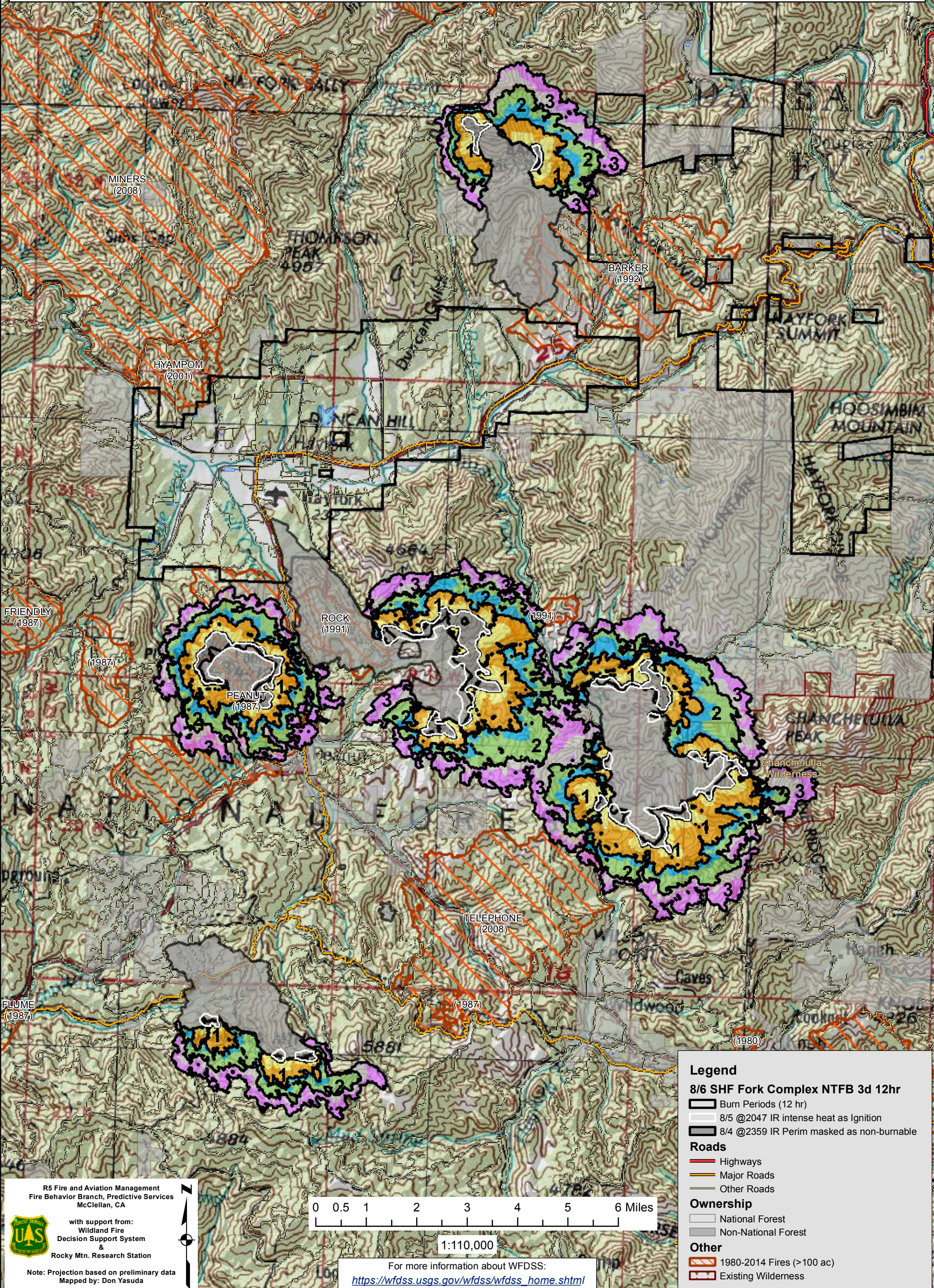
08/06 - 3 DAYS - 12hr Burn Periods (0900-2100) - 30m Res

Fuel Moisture & Wx: 40503 - HAYFORK (1.6 miles)

File: 8.6 to 8.8 3 day Near Term Fire Behavior; Analyst: Larry Hood

OREGON
(2001)

Note: Updated 3 day Near Term analysis, 8/6 to 8/8 for Rail, Peak, Barker, Schiell, and Blue fires. Masks 8/4 2359 IR perimeters as non-burnable and uses 8/5 2047 IR intense heat for ignition file to capture areas of fire showing recent growth. Model assumes no suppression action. **May under predict spread due to extreme drought conditions or increased atmospheric instability and possibility of thunderstorm downdrafts.** Colors showing 6 hour time steps.



Legend

8/6 SHF Fork Complex NTFB 3d 12hr

- Burn Periods (12 hr)
- 8/5 @2047 IR intense heat as Ignition
- 8/4 @2359 IR Perim masked as non-burnable

Roads

- Highways
- Major Roads
- Other Roads

Ownership

- National Forest
- Non-National Forest

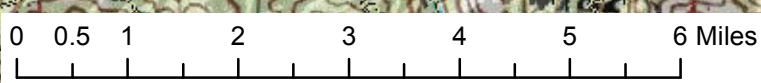
Other

- 1980-2014 Fires (>100 ac)
- Existing Wilderness

R5 Fire and Aviation Management
Fire Behavior Branch, Predictive Services
McClellan, CA

with support from:
Wildland Fire
Decision Support System &
Rocky Mtn. Research Station

Note: Projection based on preliminary data
Mapped by: Don Yasuda



1:110,000

For more information about WFDSS:
https://wfdss.usgs.gov/wfdss/wfdss_home.shtml