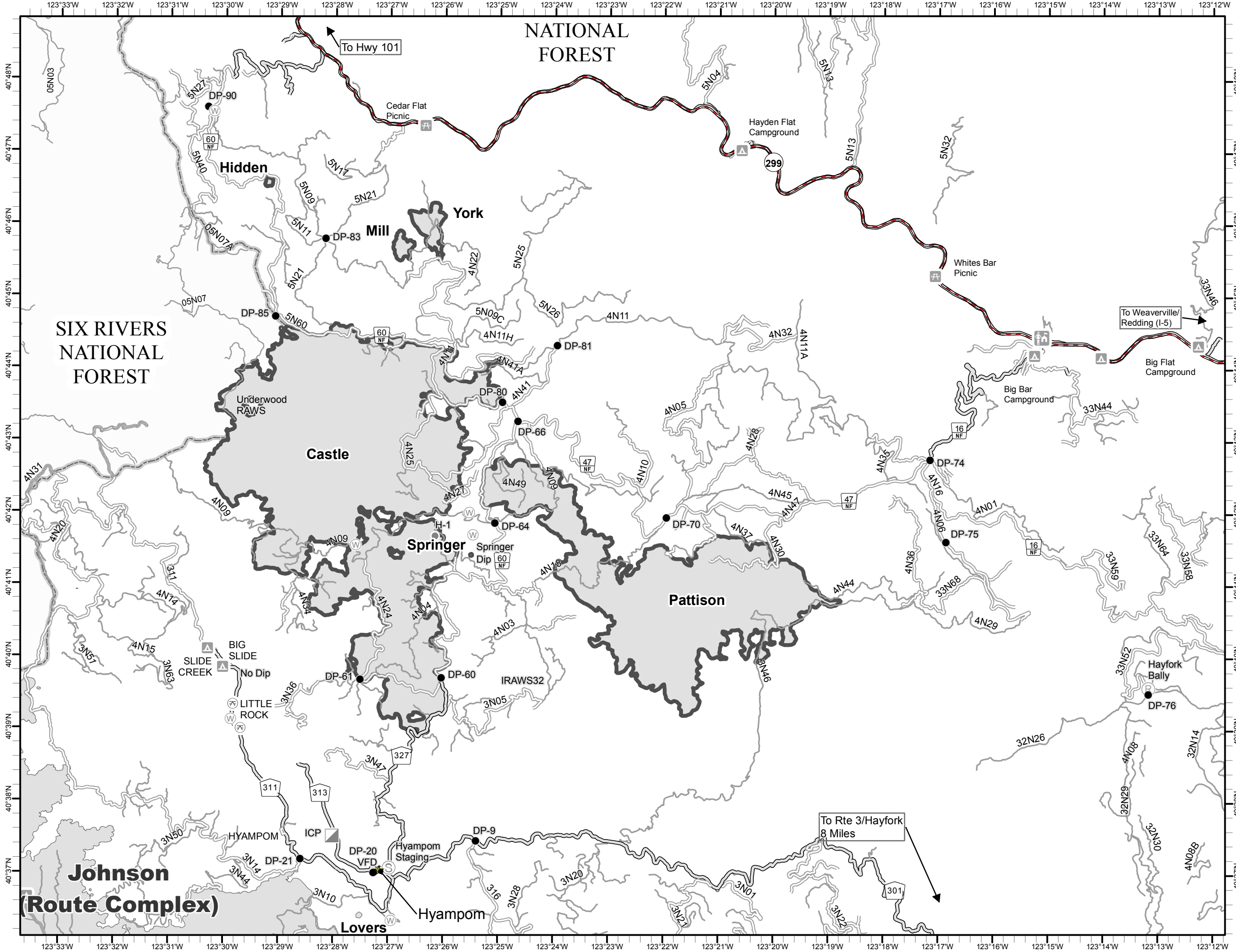
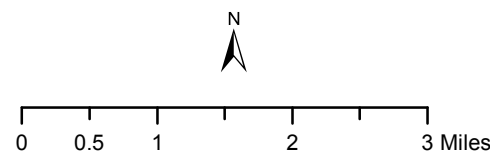


South Complex  
CA-SHF-002108

Transportation Map  
August 11, 2015



- Highway
- Paved
- Surfaced
- Native
- Water Source
- Drop Point
- Helispot
- Incident Command Post
- Repeater
- Staging Area



8/11/2015 1:49:48 AM



**Johnson  
(Route Complex)**

To Rte 3/Hayfork  
8 Miles

To Weaverville/  
Redding (I-5)

To Hwy 101