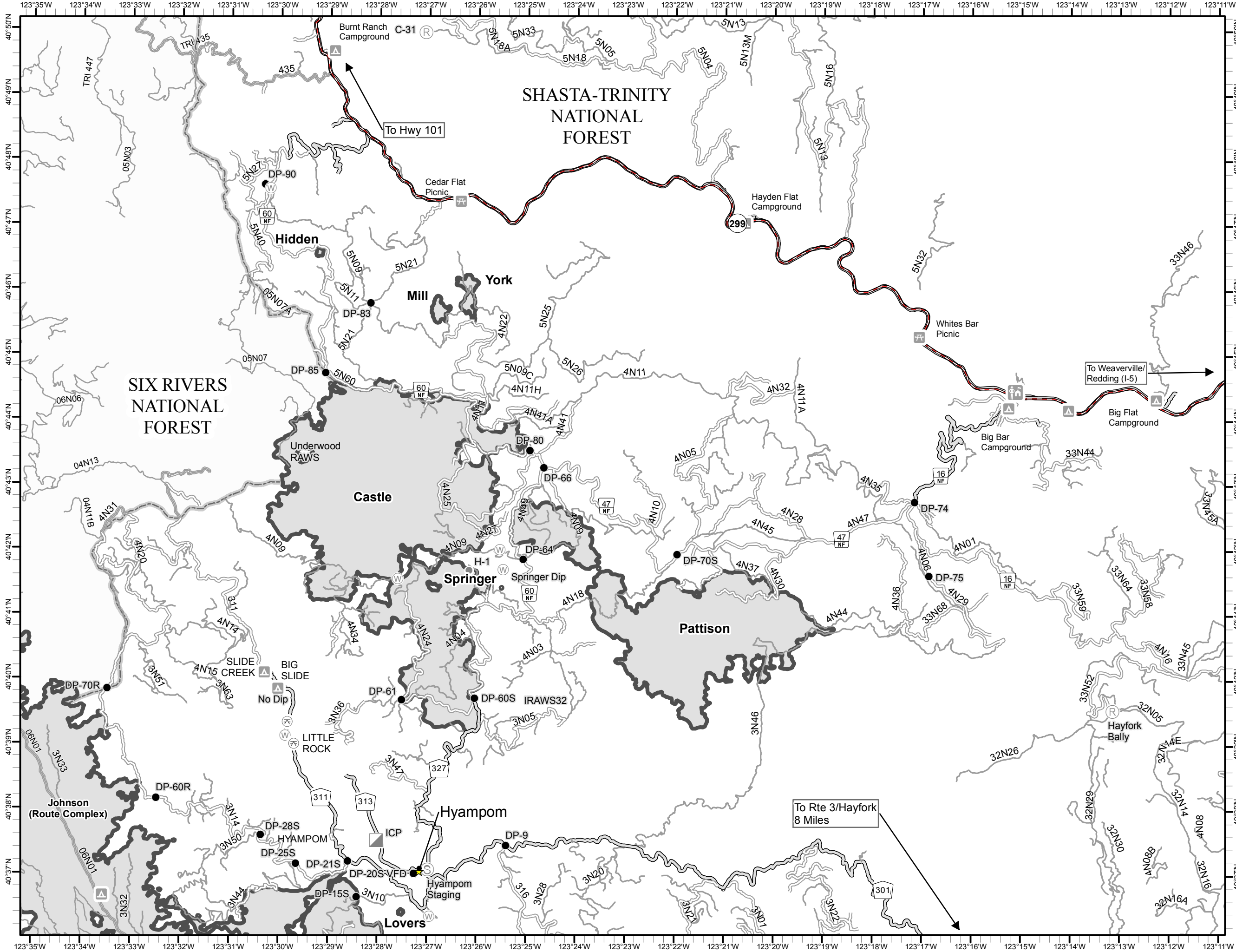
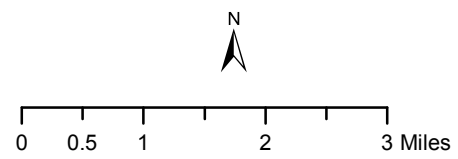


South Complex CA-SHF-002108

Transportation Map August 11, 2015



- Highway
- Paved
- Surfaced
- Native
- Water Source
- Drop Point
- Helispot
- Incident Command Post
- Repeater
- Staging Area



8/10/2015 9:21:46 PM



To Rte 3/Hayfork
8 Miles

To Hwy 101

To Weaverville/
Redding (I-5)