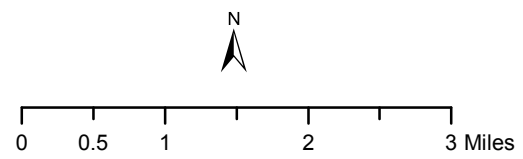


- IAP Map Page
- Highway
- Paved
- Surfaced
- Native
- Water Source
- Drop Point
- Helispot
- Incident Command Post
- Repeater
- Staging Area

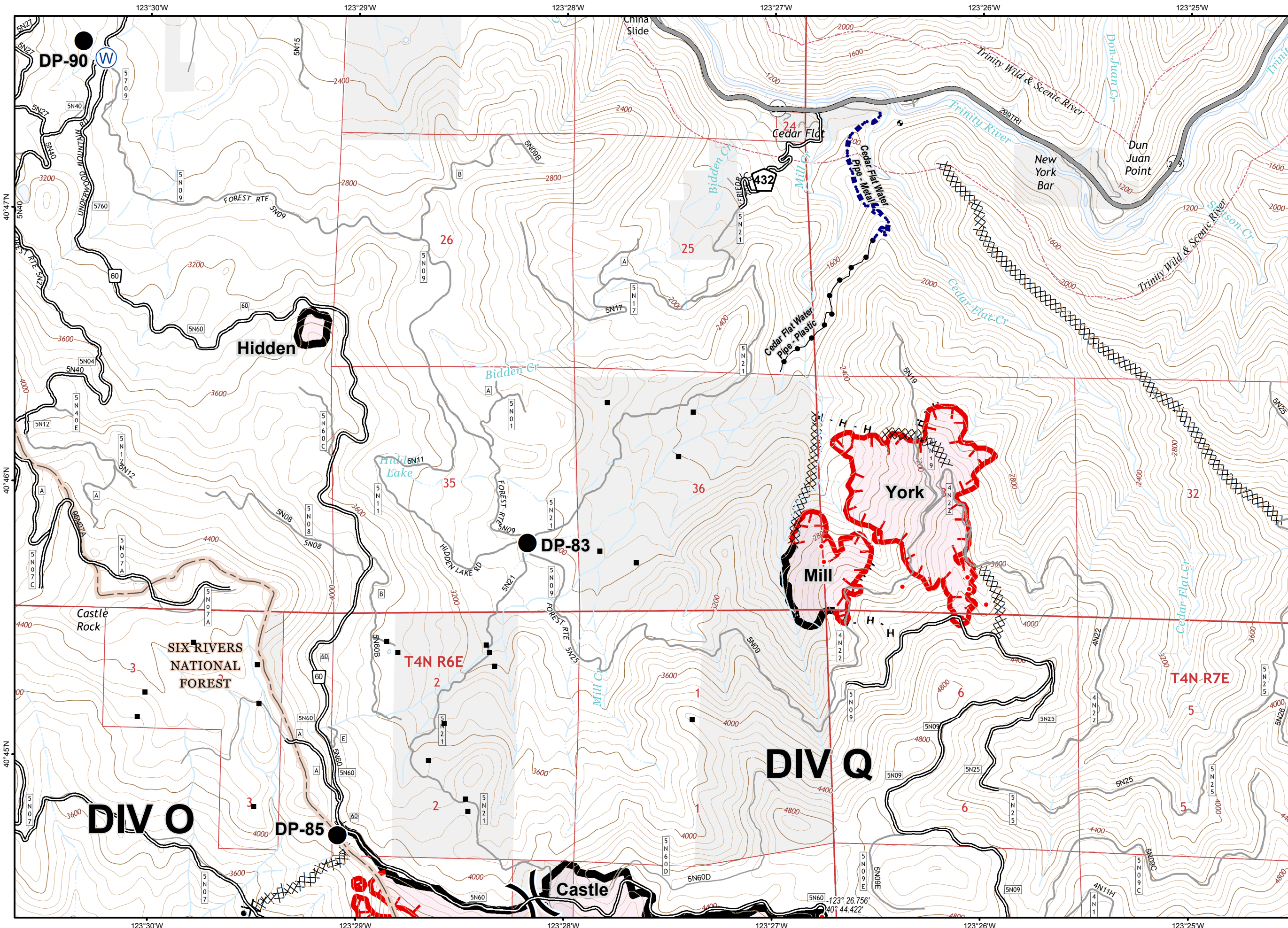


8/13/2015 1:36:49 AM

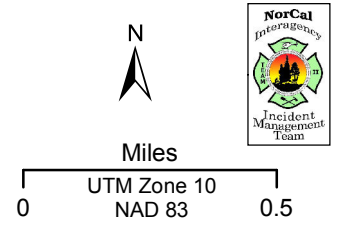
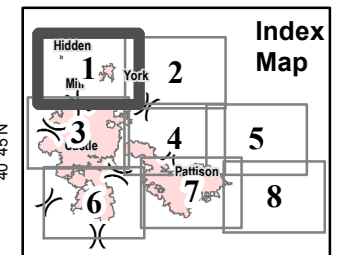


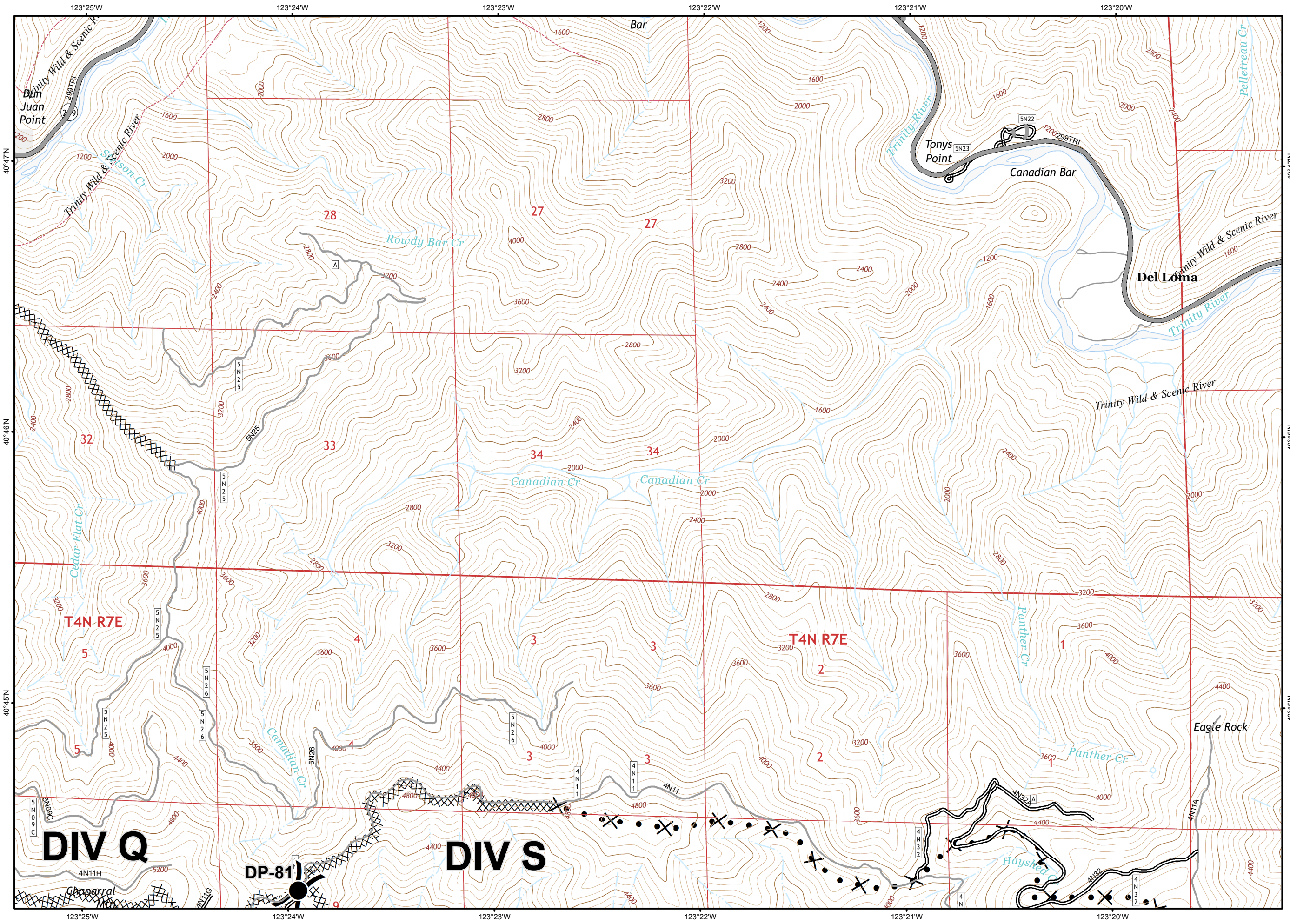
Johnson
Route Complex)

To Rte 3/Hayfork
8 Miles

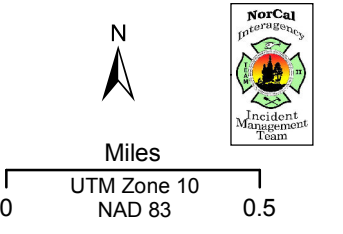
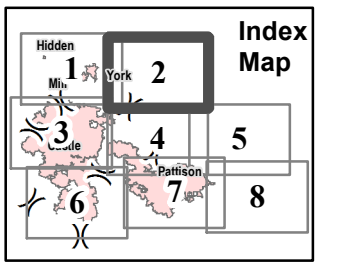


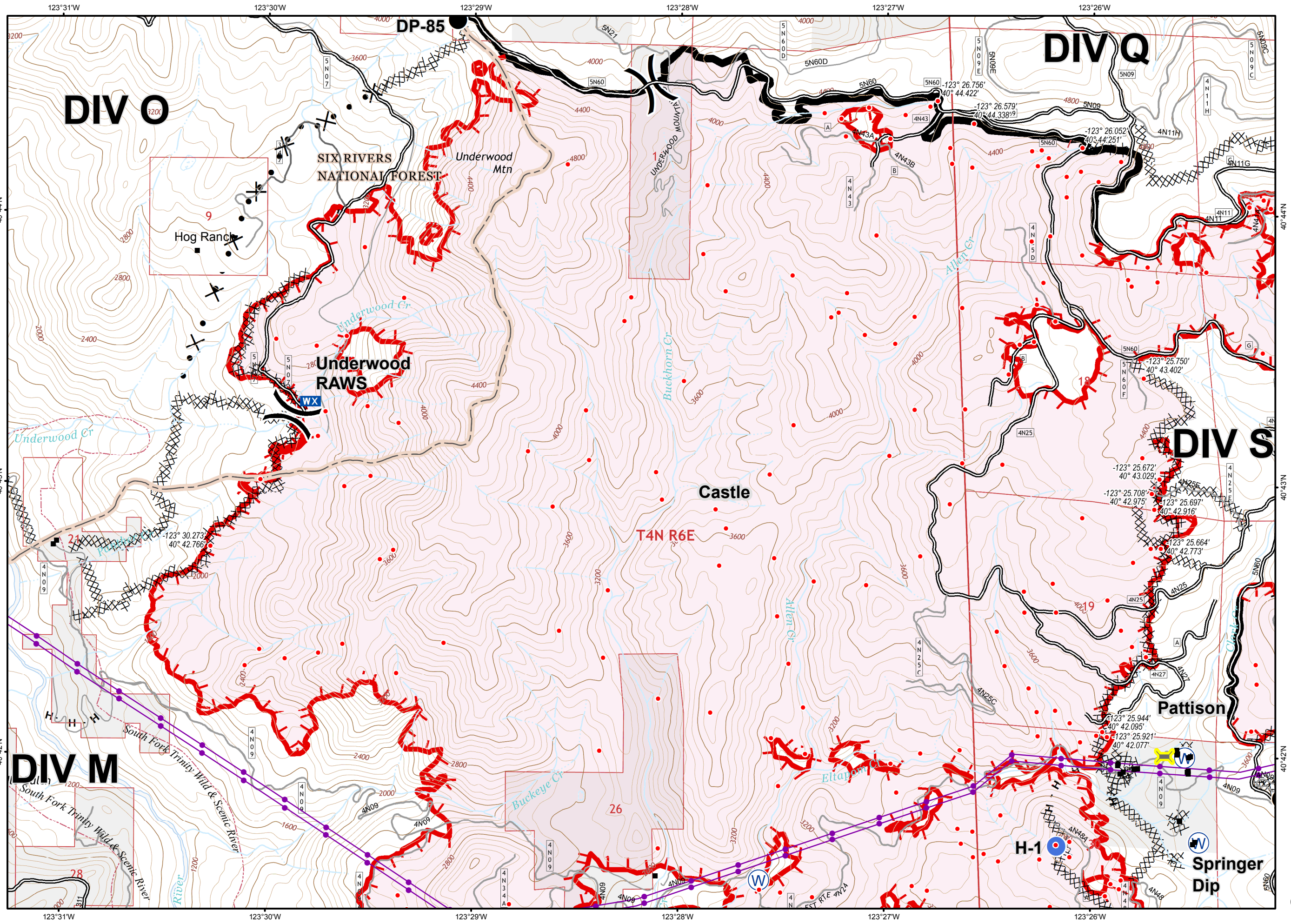
- Isolated Heat Source
- Drop Point
- Ⓜ Water Source
- ▬ Uncontrolled Fire Edge
- XXXXX Completed Dozer Line
- ▬ Completed Line
- H - H - Hand Line
- ⊗ Proposed Dozer Line
-) Division
- Structure
- NON-FS Land



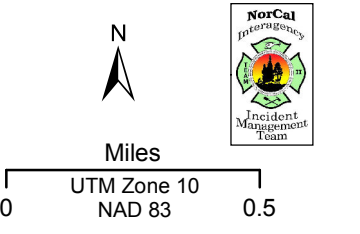
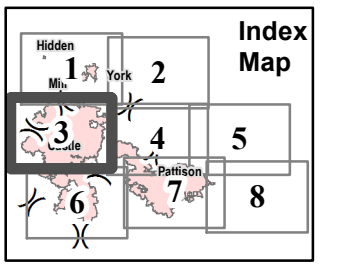


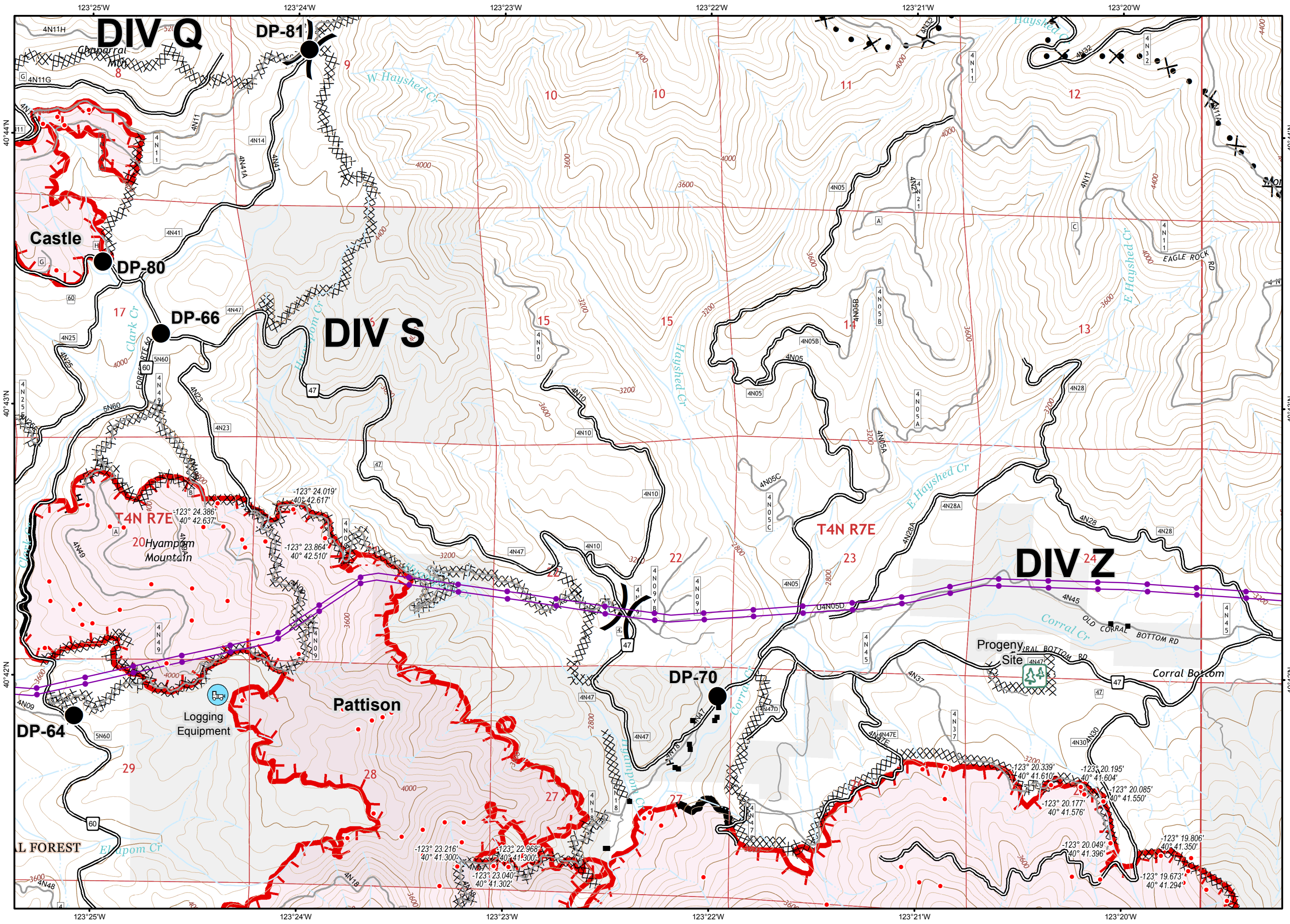
- Drop Point
- XXXXXX Completed Dozer Line
- X••• Proposed Dozer Line
-) Division
- NON-FS Land



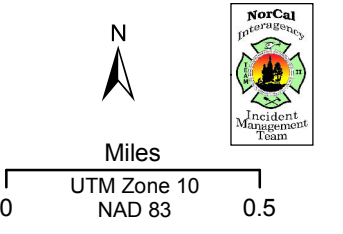
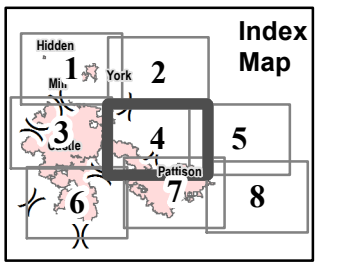


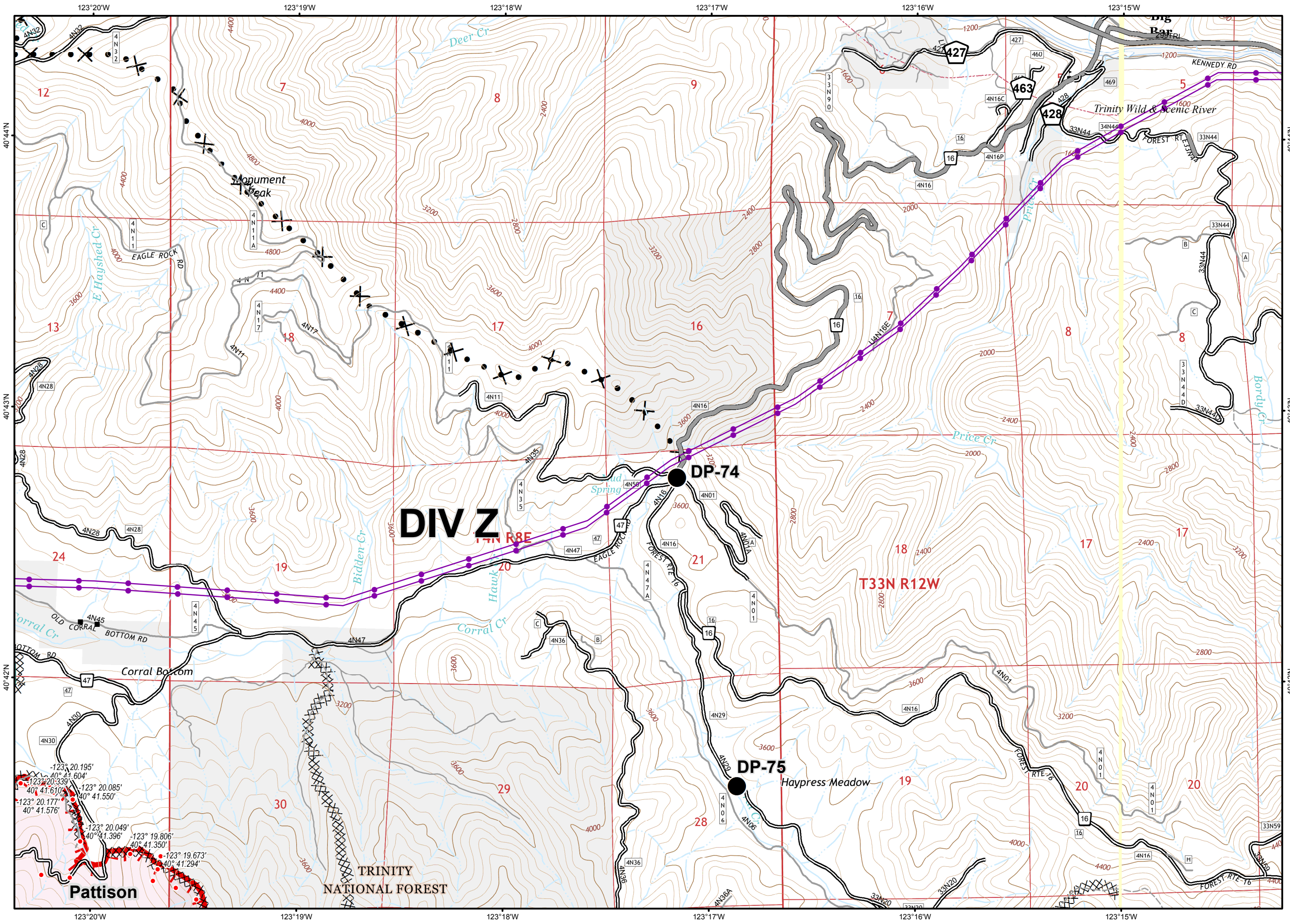
- Isolated Heat Source
- Drop Point
- Helispot
- WX Mobile Weather Unit
- W Water Source
- Uncontrolled Fire Edge
- Completed Dozer Line
- Completed Line
- H - H - Hand Line
- Proposed Dozer Line
-) Division
- Transmission Lines
- Structure
- NON-FS Land



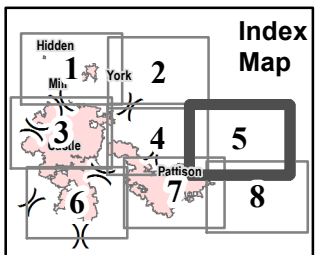


- Isolated Heat Source
- Drop Point
- ▬ Uncontrolled Fire Edge
- ▨ Completed Dozer Line
- ▬ Completed Line
- H - H - Hand Line
- ⊗ Proposed Dozer Line
-) Division
- Transmission Lines
- Structure
- NON-FS Land





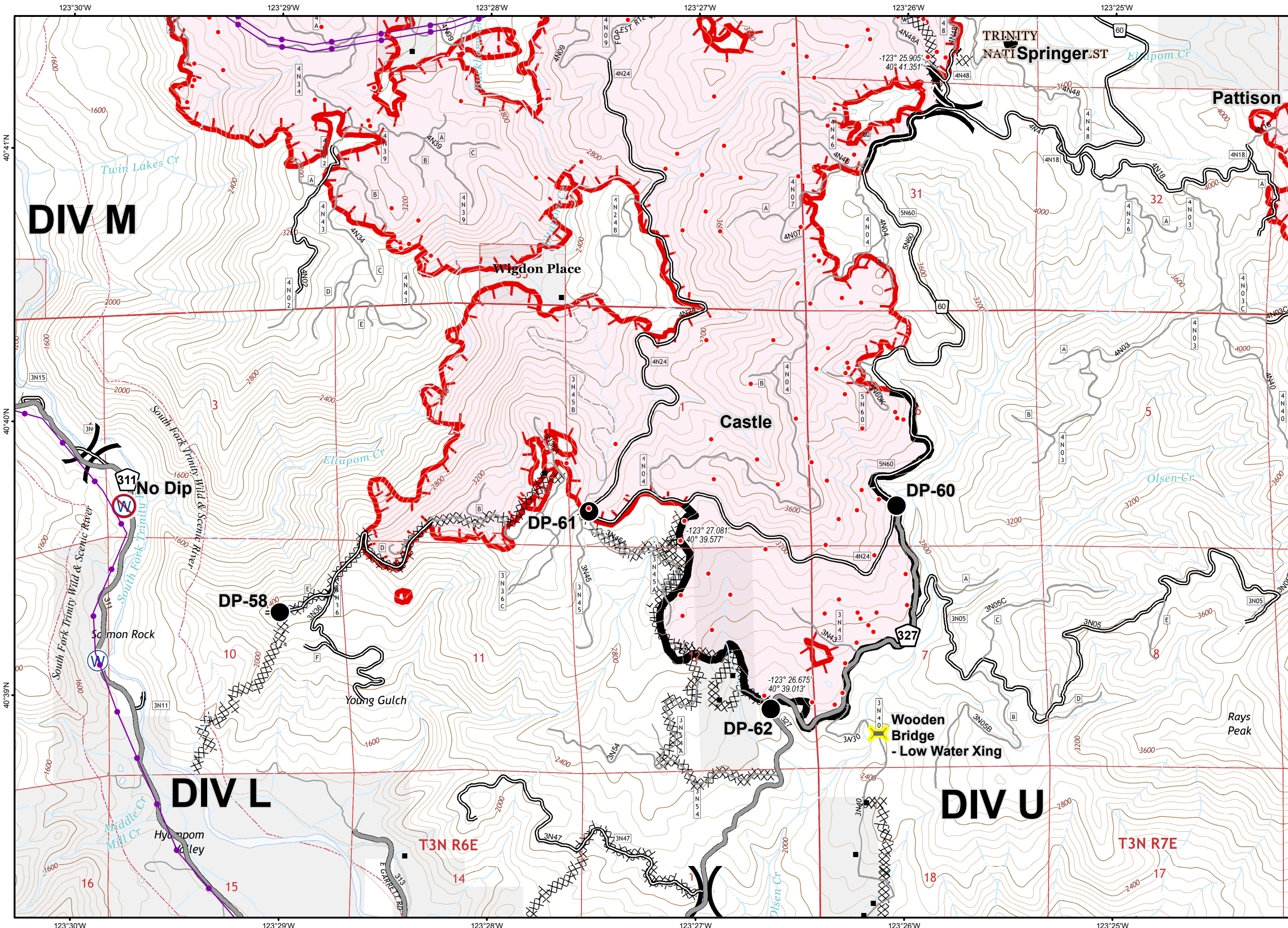
- Isolated Heat Source
- Drop Point
- ▬ Uncontrolled Fire Edge
- XXXXX Completed Dozer Line
- X • Proposed Dozer Line
-) Division
- Transmission Lines
- Structure
- NON-FS Land



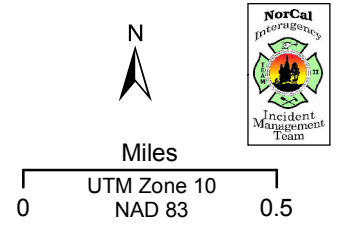
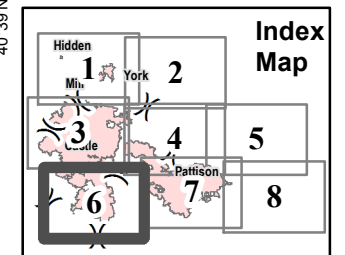
A north arrow pointing upwards and a scale bar labeled 'Miles' and 'UTM Zone 10 NAD 83' with a scale from 0 to 0.5 miles.

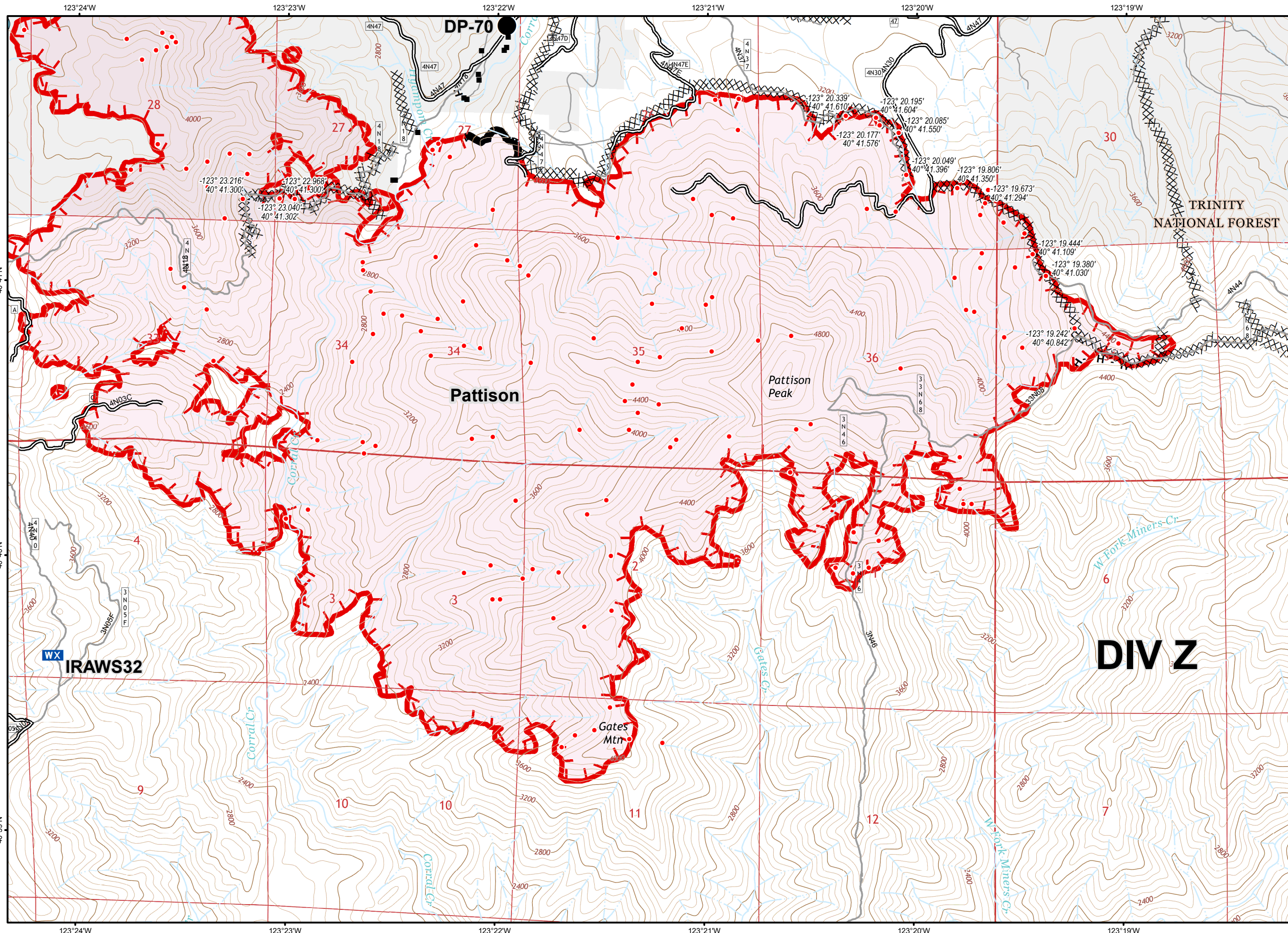


Coordinates for the Pattison area:
-123° 20.195' 40° 41.604'
-123° 20.339' 40° 41.604'
-123° 20.085' 40° 41.550'
-123° 20.177' 40° 41.550'
-123° 20.177' 40° 41.576'
-123° 20.049' 40° 41.396'
-123° 19.806' 40° 41.350'
-123° 19.673' 40° 41.294'

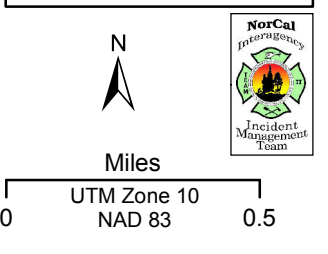
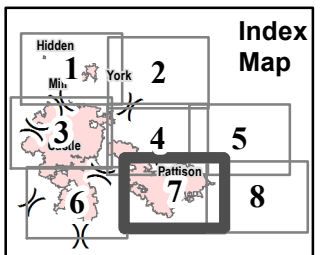


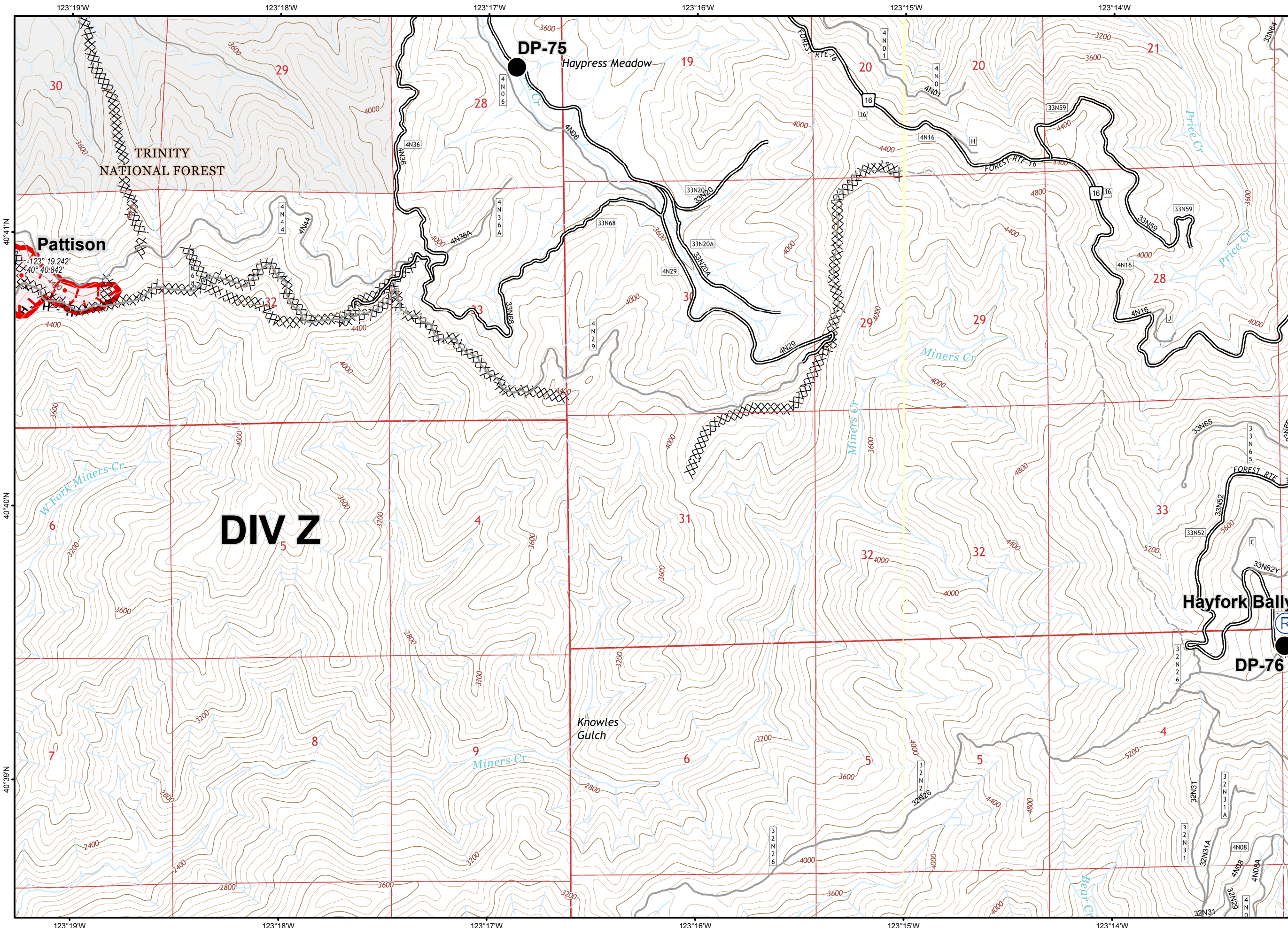
- Isolated Heat Source
- Drop Point
- WX Mobile Weather Unit
- W Water Source
- W Restricted Water Source
- Uncontrolled Fire Edge
- Completed Dozer Line
- Completed Line
- H - H - Hand Line
-) Division
- Transmission Lines
- Structure
- NON-FS Land



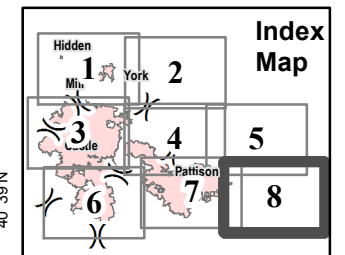


- Isolated Heat Source
- Drop Point
- WX Mobile Weather Unit
- Uncontrolled Fire Edge
- Completed Dozer Line
- Completed Line
- H - H - Hand Line
- Division
- Structure
- NON-FS Land





- Isolated Heat Source
- Drop Point
- R Repeater
- Uncontrolled Fire Edge
- Completed Dozer Line
- H - H - Hand Line
- X • • Proposed Dozer Line
-) Division
- NON-FS Land



N

Miles

UTM Zone 10
NAD 83

0 0.5