

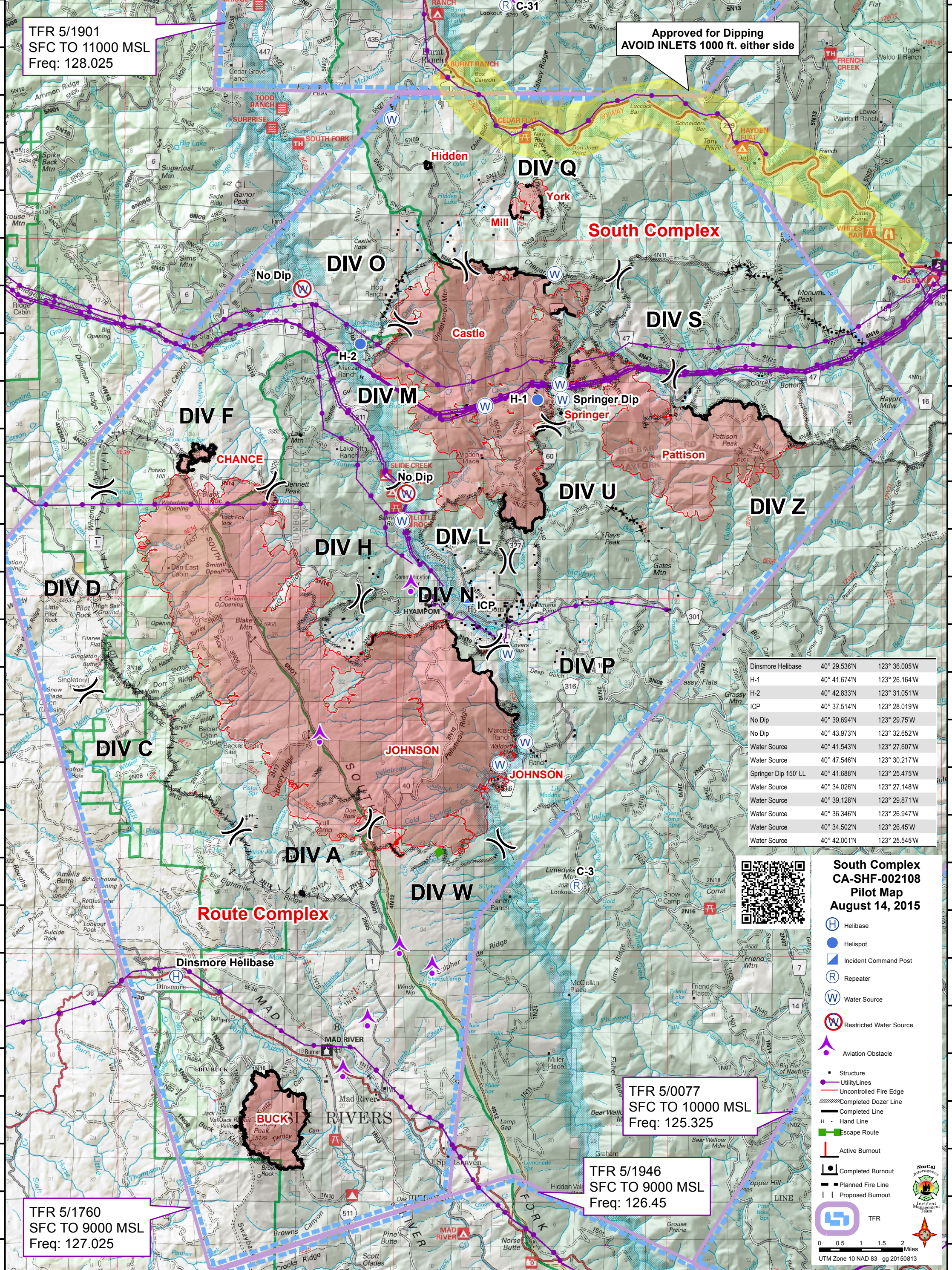
TFR 5/1901
SFC TO 11000 MSL
Freq: 128.025

Approved for Dipping
AVOID INLETS 1000 ft. either side

TFR 5/0077
SFC TO 10000 MSL
Freq: 125.325

TFR 5/1946
SFC TO 9000 MSL
Freq: 126.45

TFR 5/1760
SFC TO 9000 MSL
Freq: 127.025



Dinsmore Helibase	40° 29.536'N	123° 36.005'W
H-1	40° 41.674'N	123° 26.164'W
H-2	40° 42.833'N	123° 31.051'W
ICP	40° 37.514'N	123° 28.019'W
No Dip	40° 39.694'N	123° 29.75'W
No Dip	40° 43.973'N	123° 32.652'W
Water Source	40° 41.543'N	123° 27.607'W
Water Source	40° 47.546'N	123° 30.217'W
Springer Dip 150' LL	40° 41.688'N	123° 25.475'W
Water Source	40° 34.026'N	123° 27.148'W
Water Source	40° 39.128'N	123° 29.871'W
Water Source	40° 36.346'N	123° 26.947'W
Water Source	40° 34.502'N	123° 26.45'W
Water Source	40° 42.001'N	123° 25.545'W



**South Complex
CA-SHF-002108
Pilot Map
August 14, 2015**

- Helibase
- Helispot
- Incident Command Post
- Repeater
- Water Source
- Restricted Water Source
- Aviation Obstacle
- Structure
- Utility Lines
- Uncontrolled Fire Edge
- Completed Dozer Line
- Completed Line
- Hand Line
- Escape Route
- Active Burnout
- Completed Burnout
- Planned Fire Line
- Proposed Burnout
- TFR

