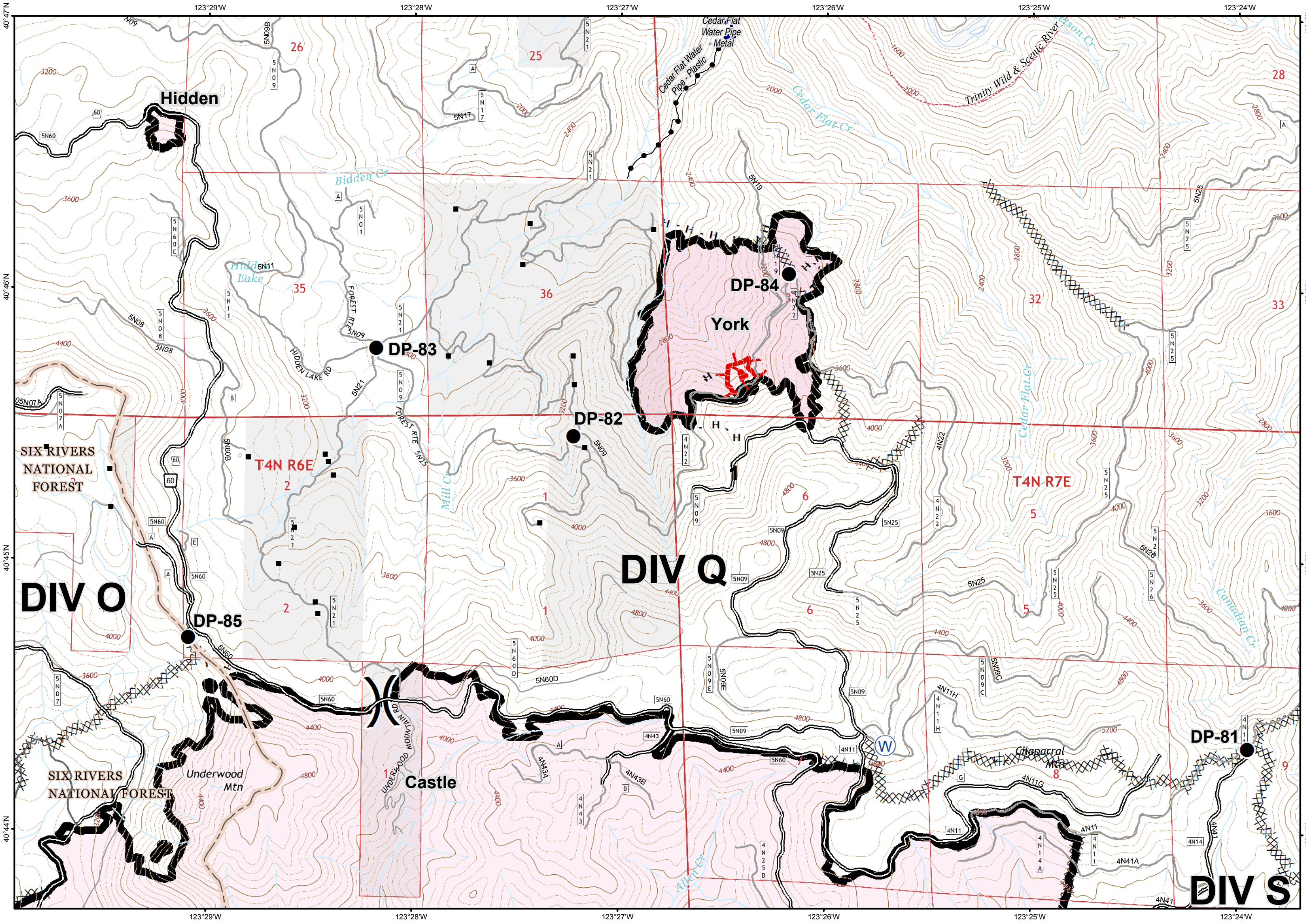


- IAP Map Page
- Highway
- Paved
- Surfaced
- Native
- WX Mobile Weather Unit
- W Water Source
- Drop Point
- Helispot
- ▲ Incident Command Post
- Ⓡ Repeater
- Ⓢ Staging Area



UTM 10 NAD 83

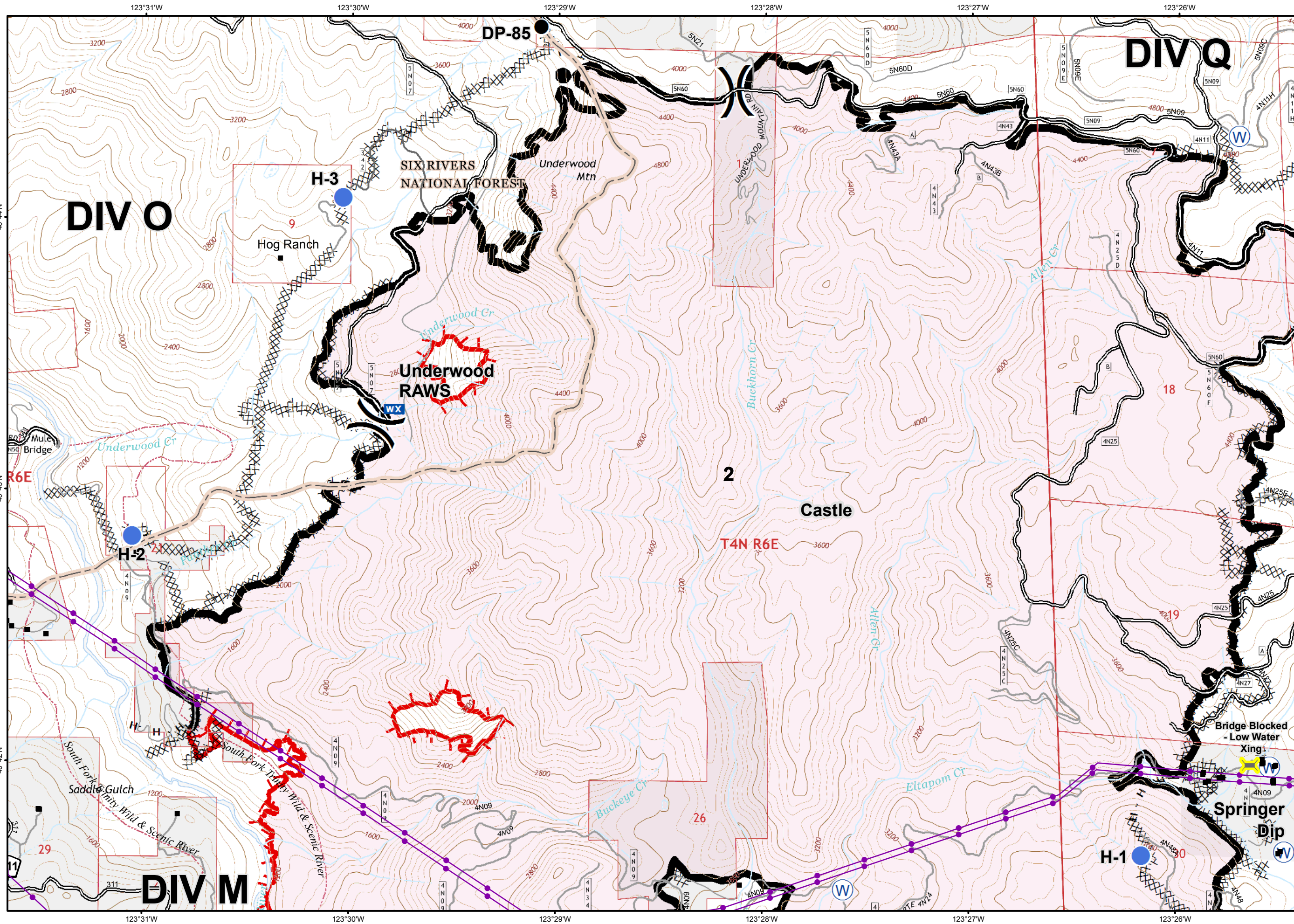




- Drop Point
- W Water Source
- Uncontrolled Fire Edge
- Completed Dozer Line
- Completed Line
- H - H - Hand Line
- ) Division
- Structure
- NON-FS Land

UTM Zone 10  
NAD 83

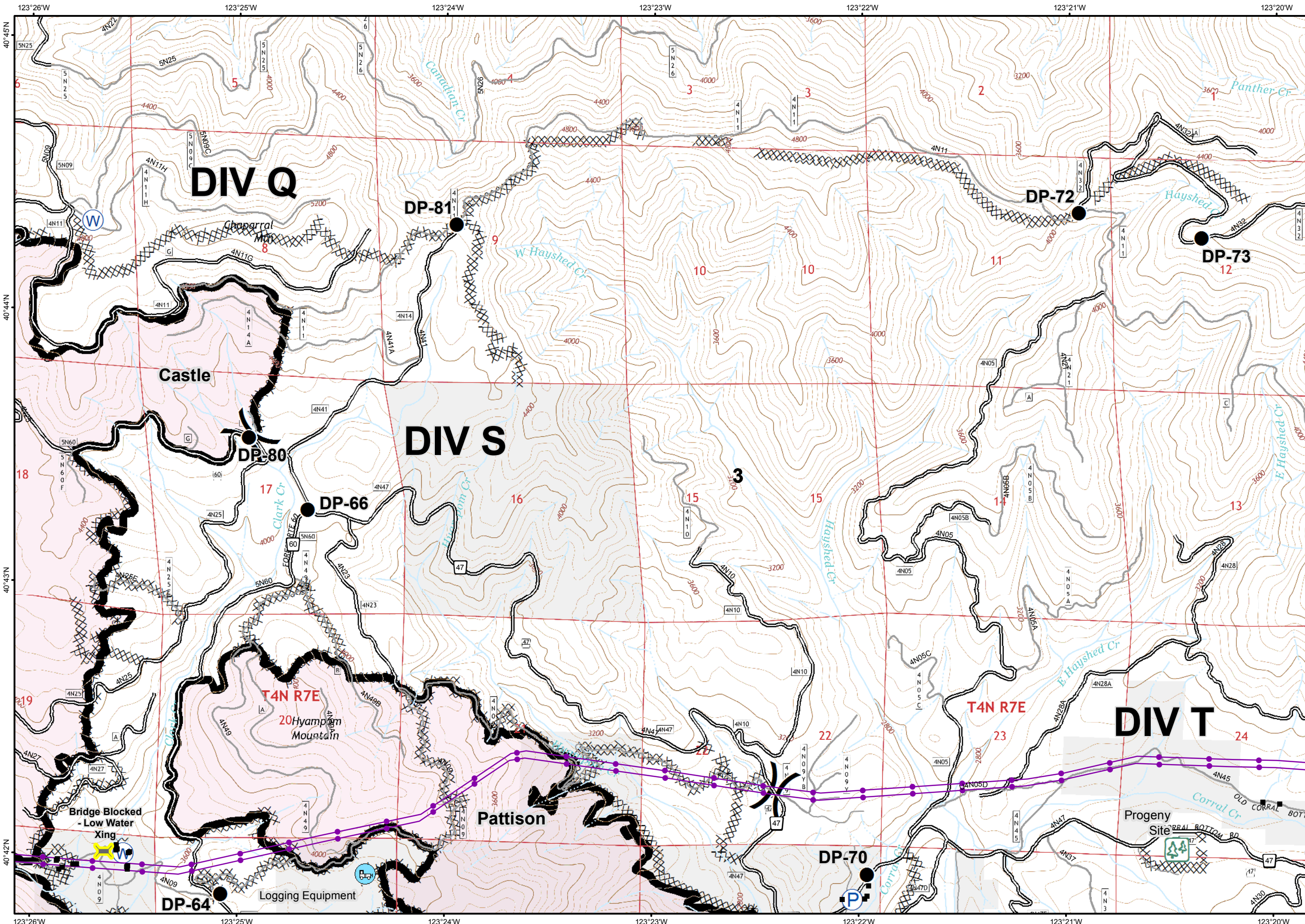
0 0.25 0.5  
Miles



- Drop Point
- Helispot
- WX Mobile Weather Unit
- W Water Source
- Uncontrolled Fire Edge
- Completed Dozer Line
- Completed Line
- H - H - Hand Line
- ) Division
- Transmission Lines
- Structure
- NON-FS Land

UTM Zone 10  
NAD 83

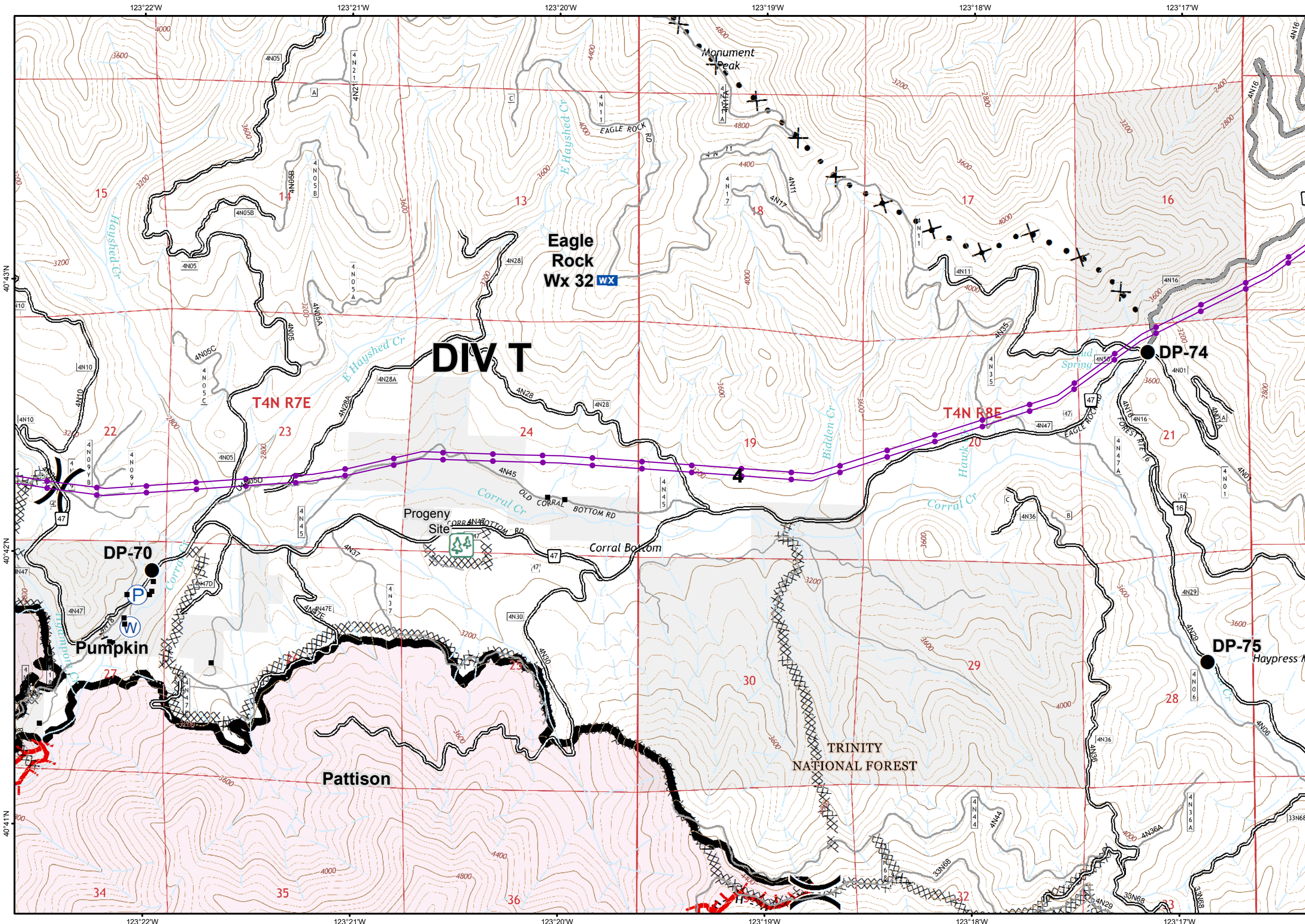
0 0.25 0.5  
Miles



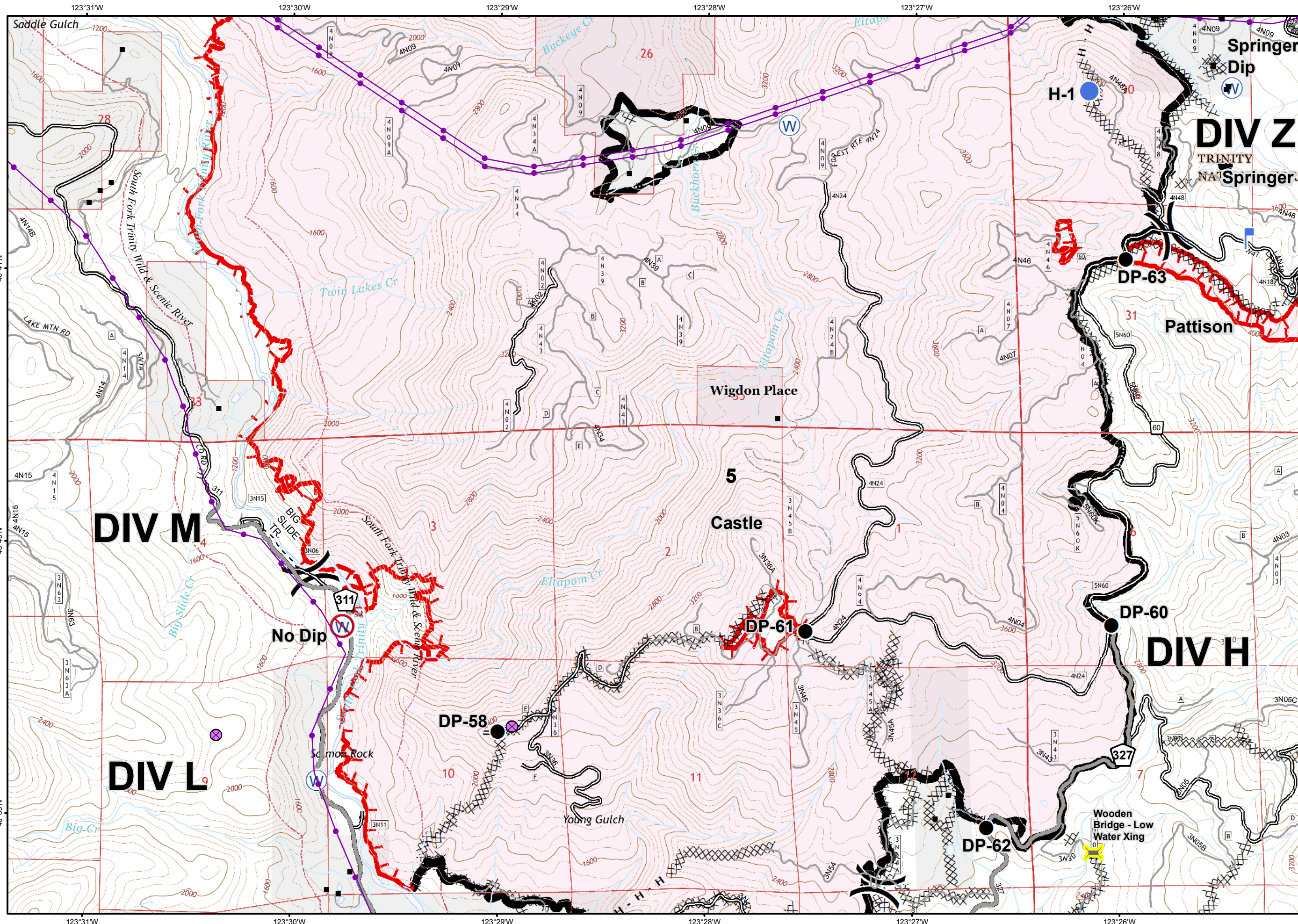
- Drop Point
- Ⓟ Pump
- Ⓜ Water Source
- XXXXX Completed Dozer Line
- ▬ Completed Line
- H - H - Hand Line
- ) Division
- Transmission Lines
- Structure
- NON-FS Land

UTM Zone 10  
NAD 83

0 0.25 Miles 0.5



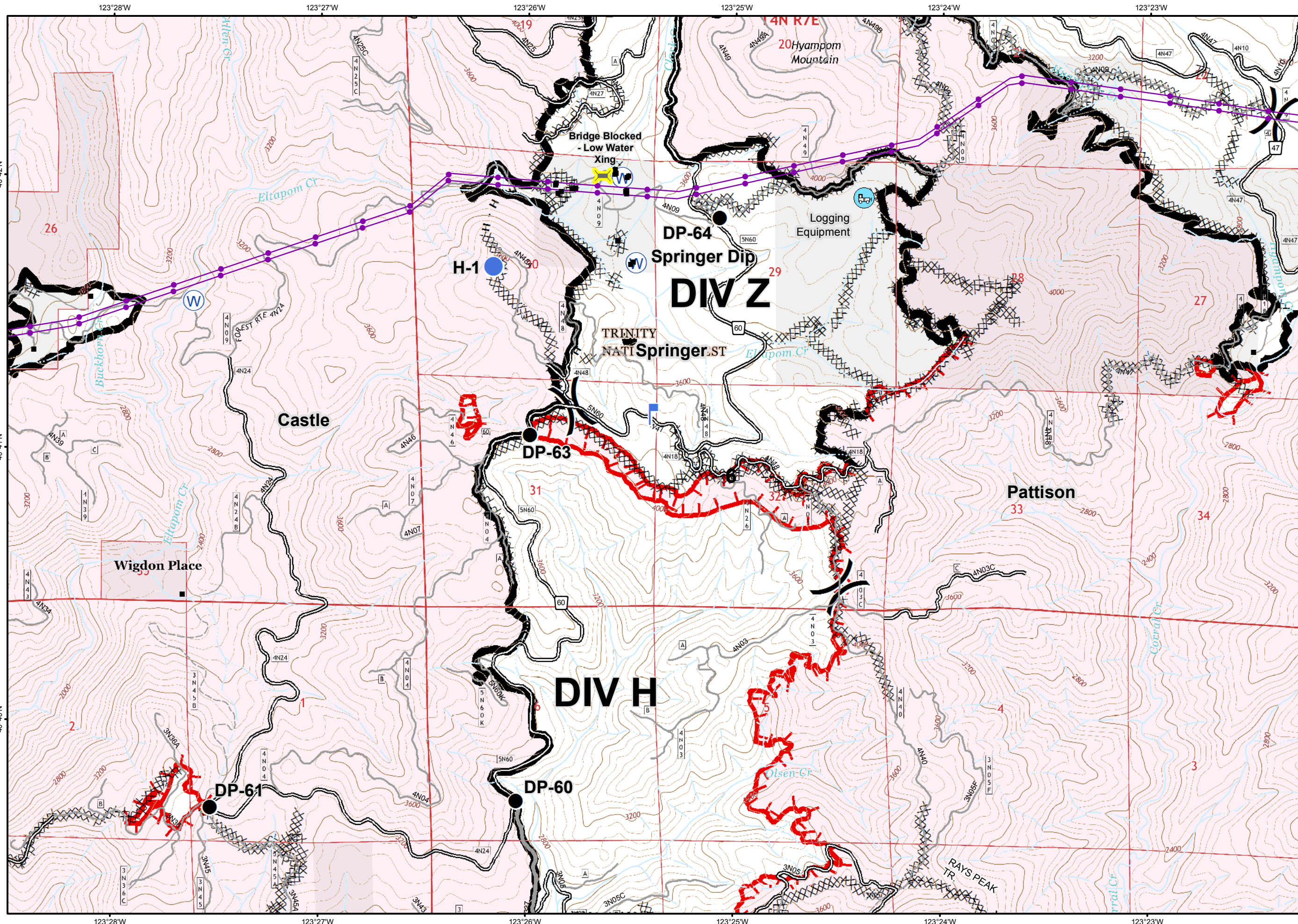
- Drop Point
- WX Mobile Weather Unit
- P Pump
- W Water Source
- Uncontrolled Fire Edge
- Completed Dozer Line
- Completed Line
- H - H - Hand Line
- Proposed Dozer Line
- Division
- Transmission Lines
- Structure
- NON-FS Land



- Drop Point
- Helispot
- Lookout
- Water Source
- Restricted Water Source
- Uncontrolled Fire Edge
- Completed Dozer Line
- Completed Line
- H - H - Hand Line
- Division
- Transmission Lines
- Structure
- Substation
- NON-FS Land

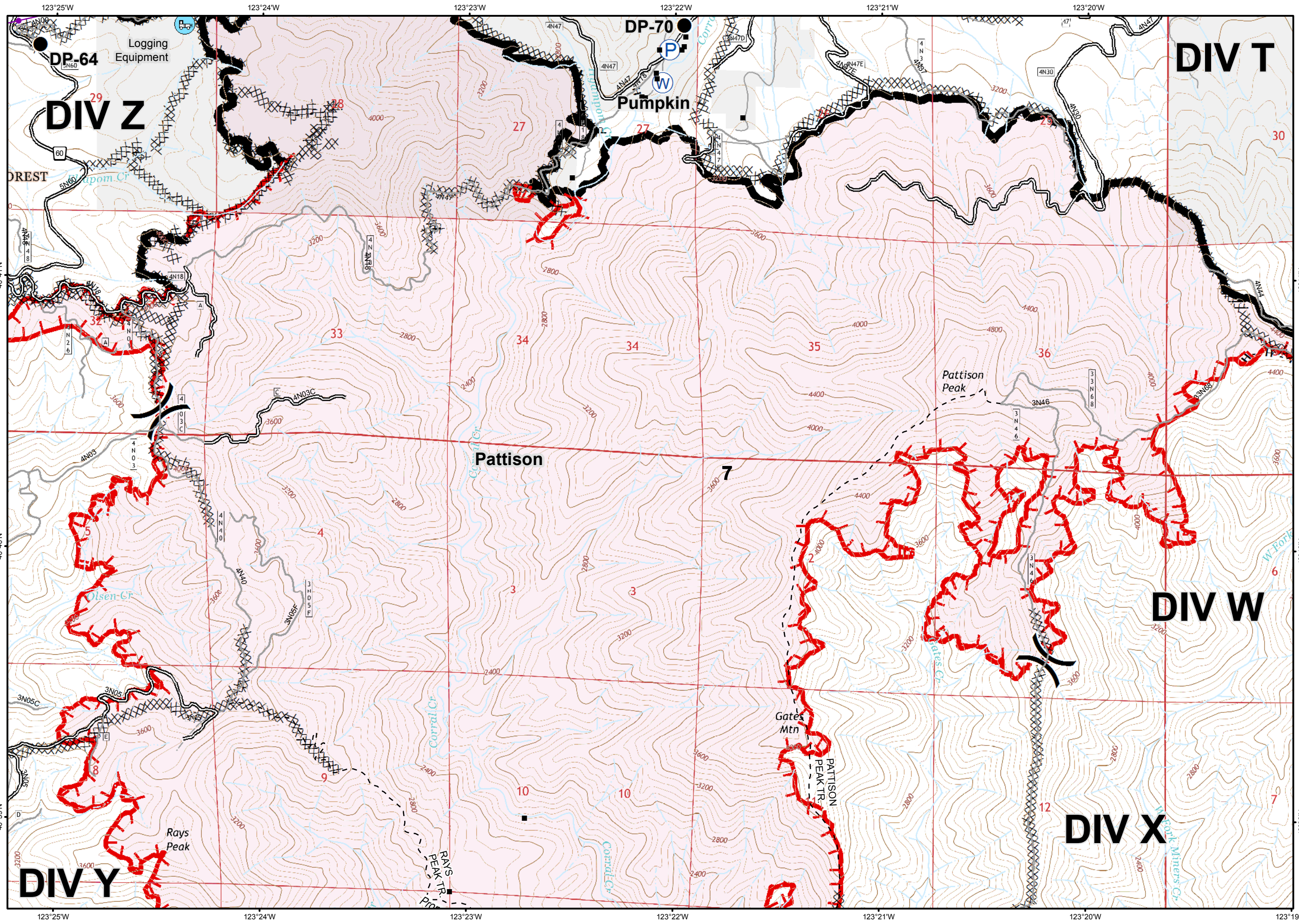
UTM Zone 10  
NAD 83

0 0.25 0.5  
Miles



- Drop Point
- Helispot
- Lookout
- ⊙ Water Source
- Uncontrolled Fire Edge
- ⊗ Completed Dozer Line
- Completed Line
- H - H - Hand Line
- ) Division
- Transmission Lines
- Structure
- NON-FS Land

UTM Zone 10  
NAD 83



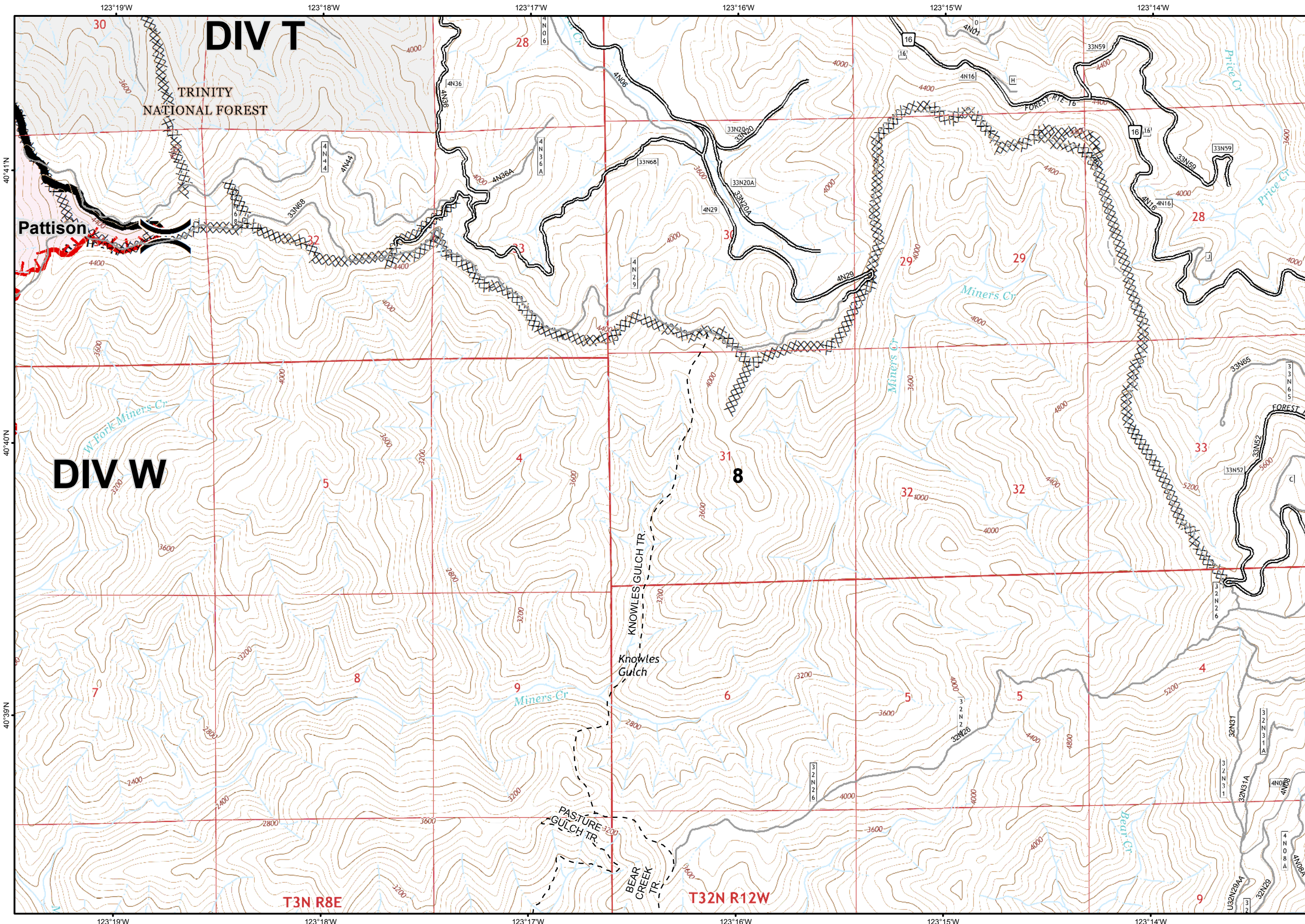
- Drop Point
- P Pump
- W Water Source
- Uncontrolled Fire Edge
- Completed Dozer Line
- Completed Line
- H - H - Hand Line
- ) Division
- Transmission Lines
- Structure
- NON-FS Land

UTM Zone 10  
NAD 83

0 0.25 0.5  
Miles

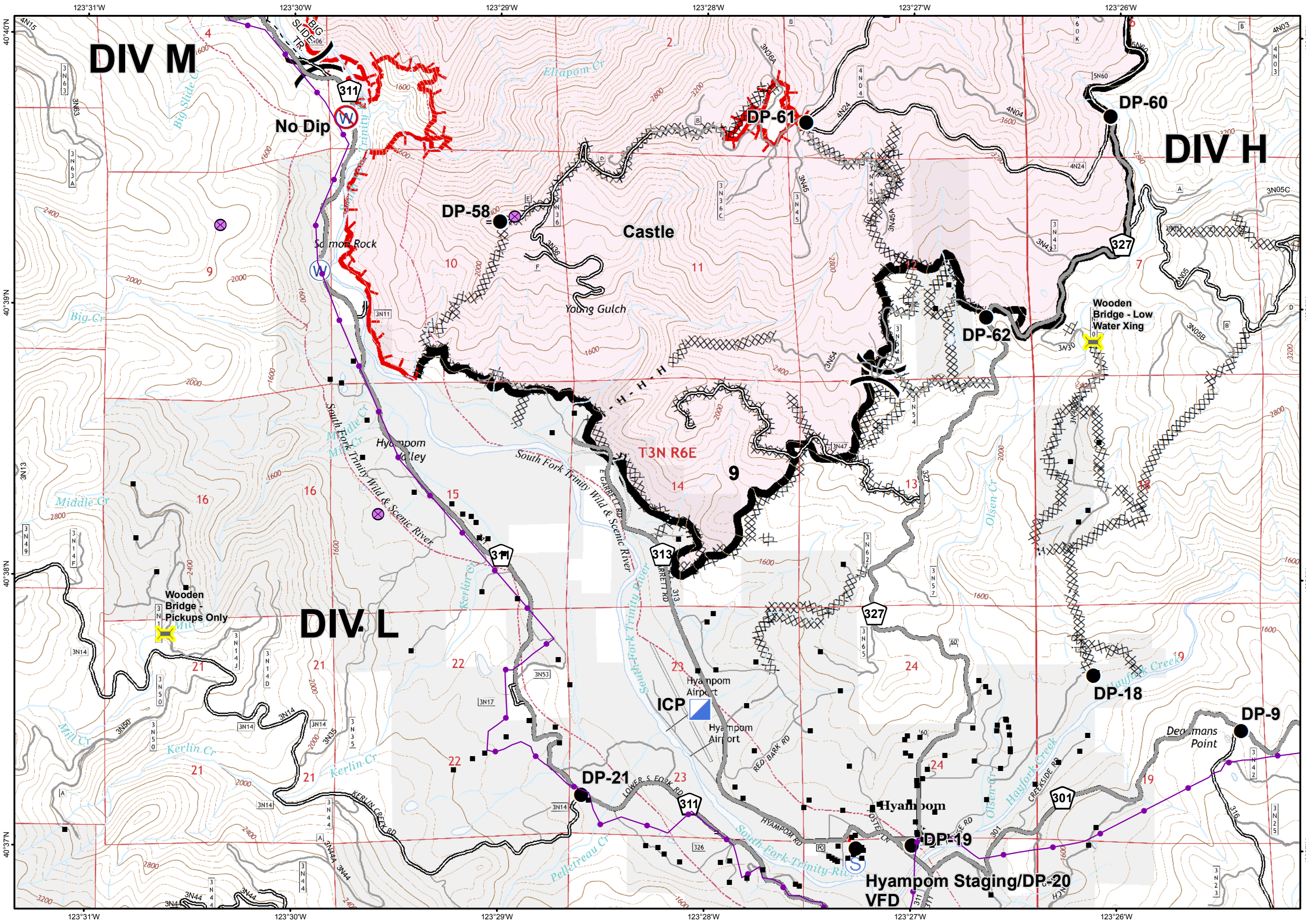






- Uncontrolled Fire Edge
- Completed Dozer Line
- Completed Line
- H - H - Hand Line
- Division
- NON-FS Land

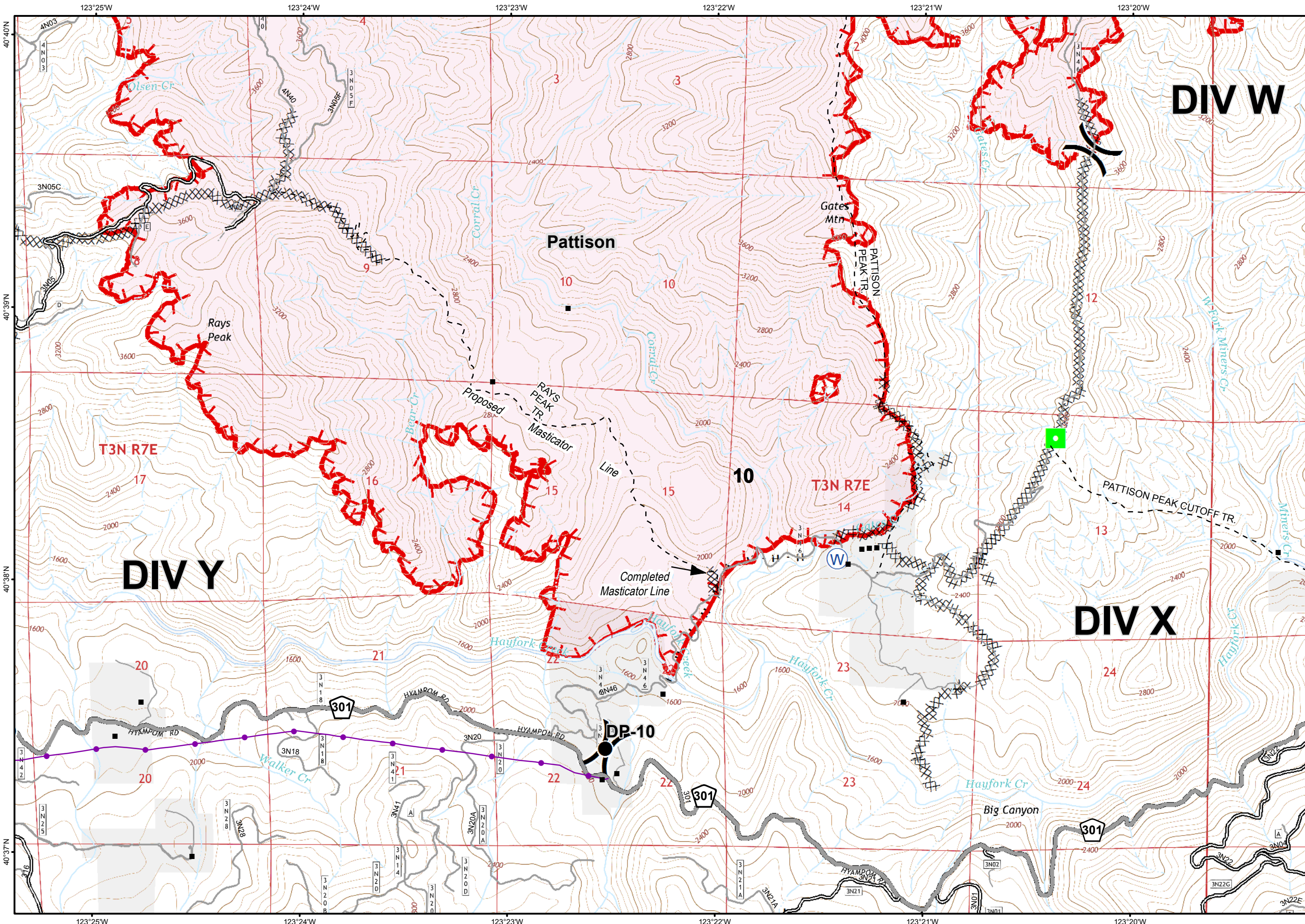
UTM Zone 10  
NAD 83






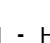






- Drop Point
- Incident Command Post
- Staging Area
- Water Source
- Restricted Water Source
- Uncontrolled Fire Edge
- Completed Dozer Line
- Completed Line
- Hand Line
- Division
- Transmission Lines
- Structure
- Substation
- NON-FS Land



UTM Zone 10  
NAD 83

0 0.25 0.5  
Miles

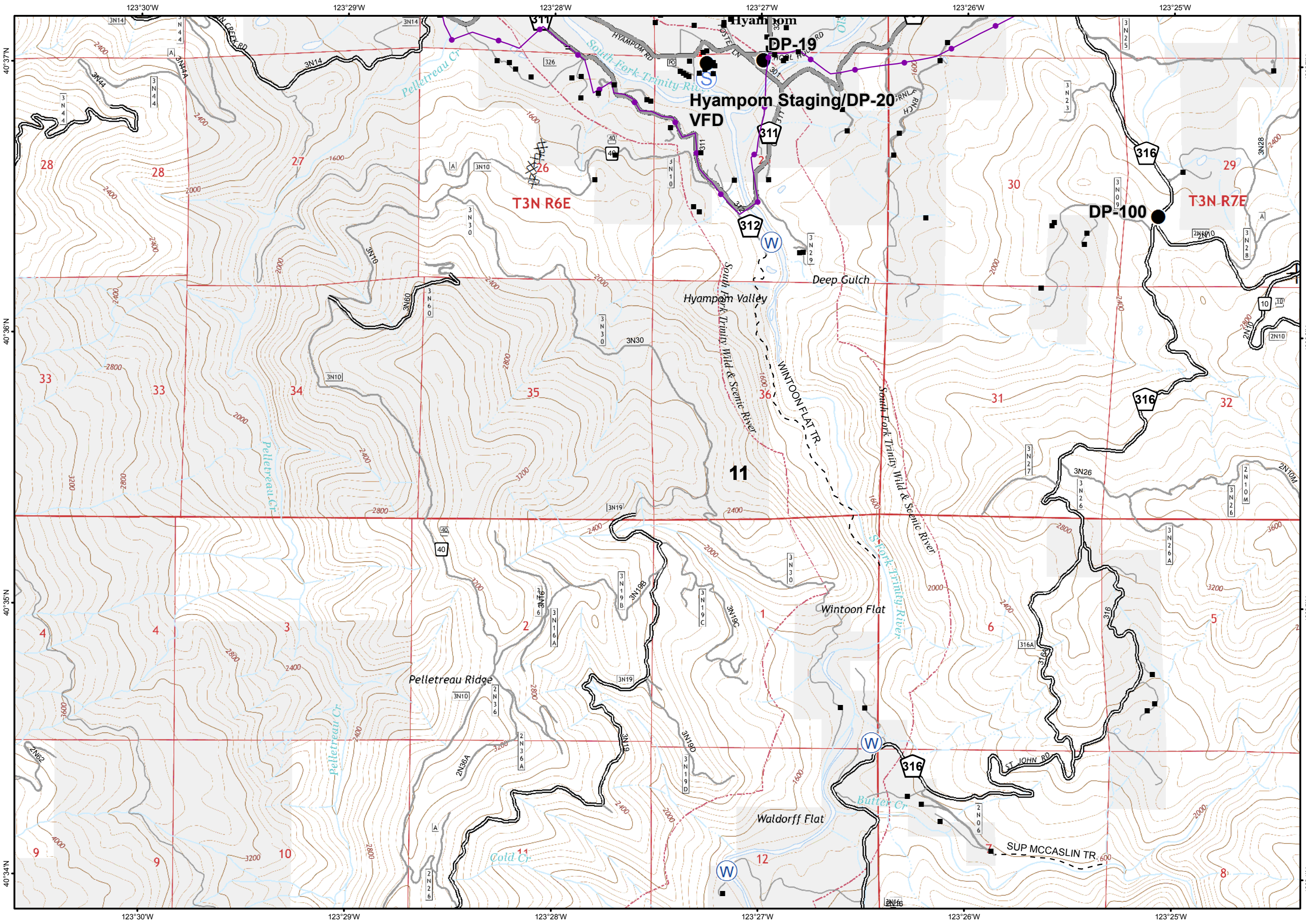


-  Drop Point
-  Water Source
-  Equipment on Line
-  Uncontrolled Fire Edge
-  Completed Dozer Line
-  H - H - Hand Line
-  Division
-  Transmission Lines
-  Structure
-  NON-FS Land

UTM Zone 10  
NAD 83



0 0.25 Miles 0.5

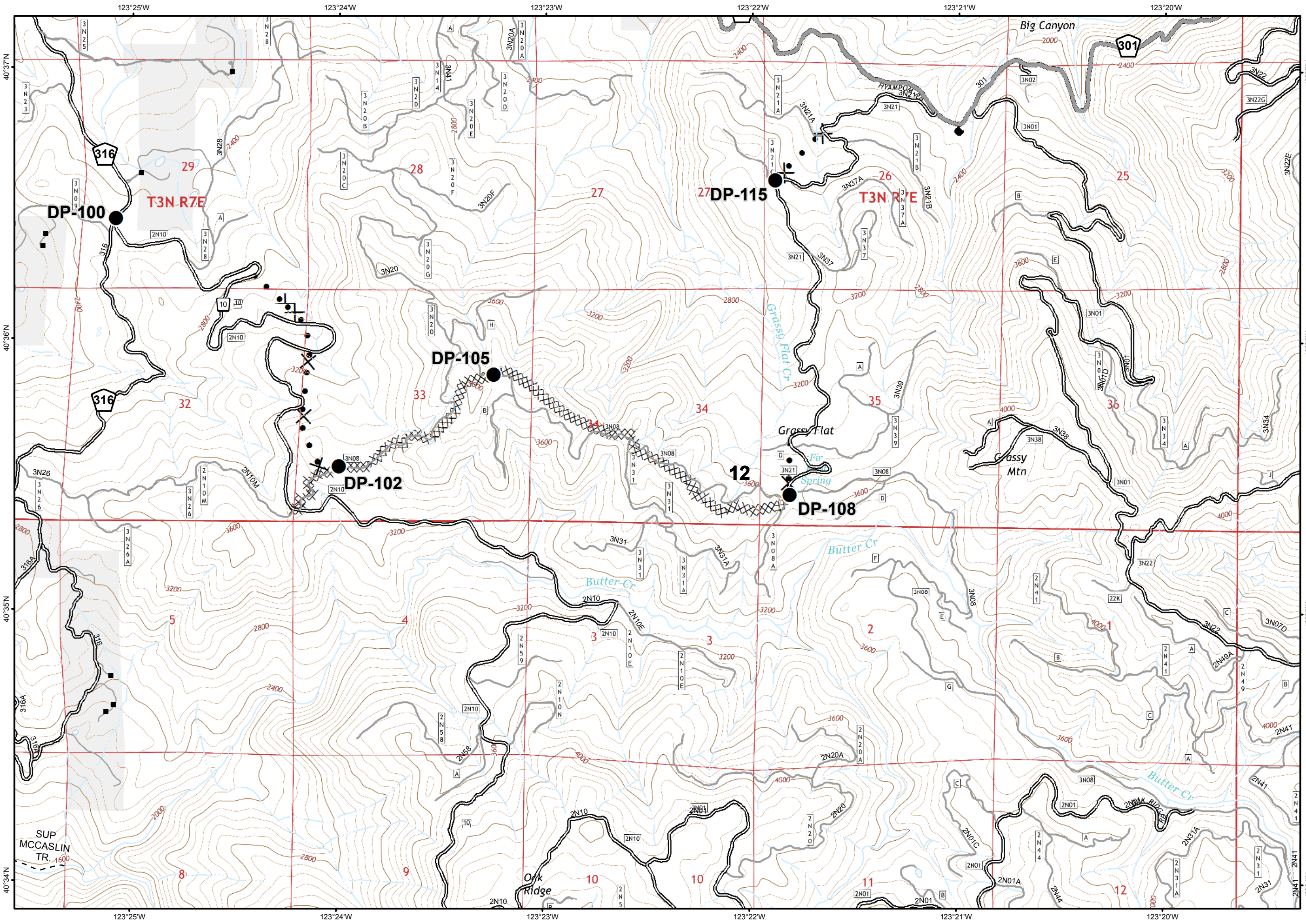


- Drop Point
- Ⓢ Staging Area
- Ⓜ Water Source
- ⊗ Completed Dozer Line
- ⊙ Proposed Dozer Line
- ) Division
- Transmission Lines
- Structure
- NON-FS Land

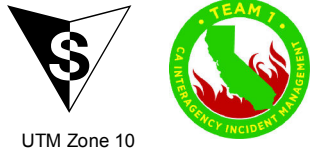
UTM Zone 10  
NAD 83

0 0.25 0.5  
Miles

8/24/2015 10:17:13 PM



- Drop Point
- XXXXX Completed Dozer Line
- Completed Line
- X•• Proposed Dozer Line
- ) Division
- Structure
- NON-FS Land



UTM Zone 10  
NAD 83

0 0.25 0.5  
Miles