

South Complex CA-SHF-002108

IAP Map Packet

August 31, 2015

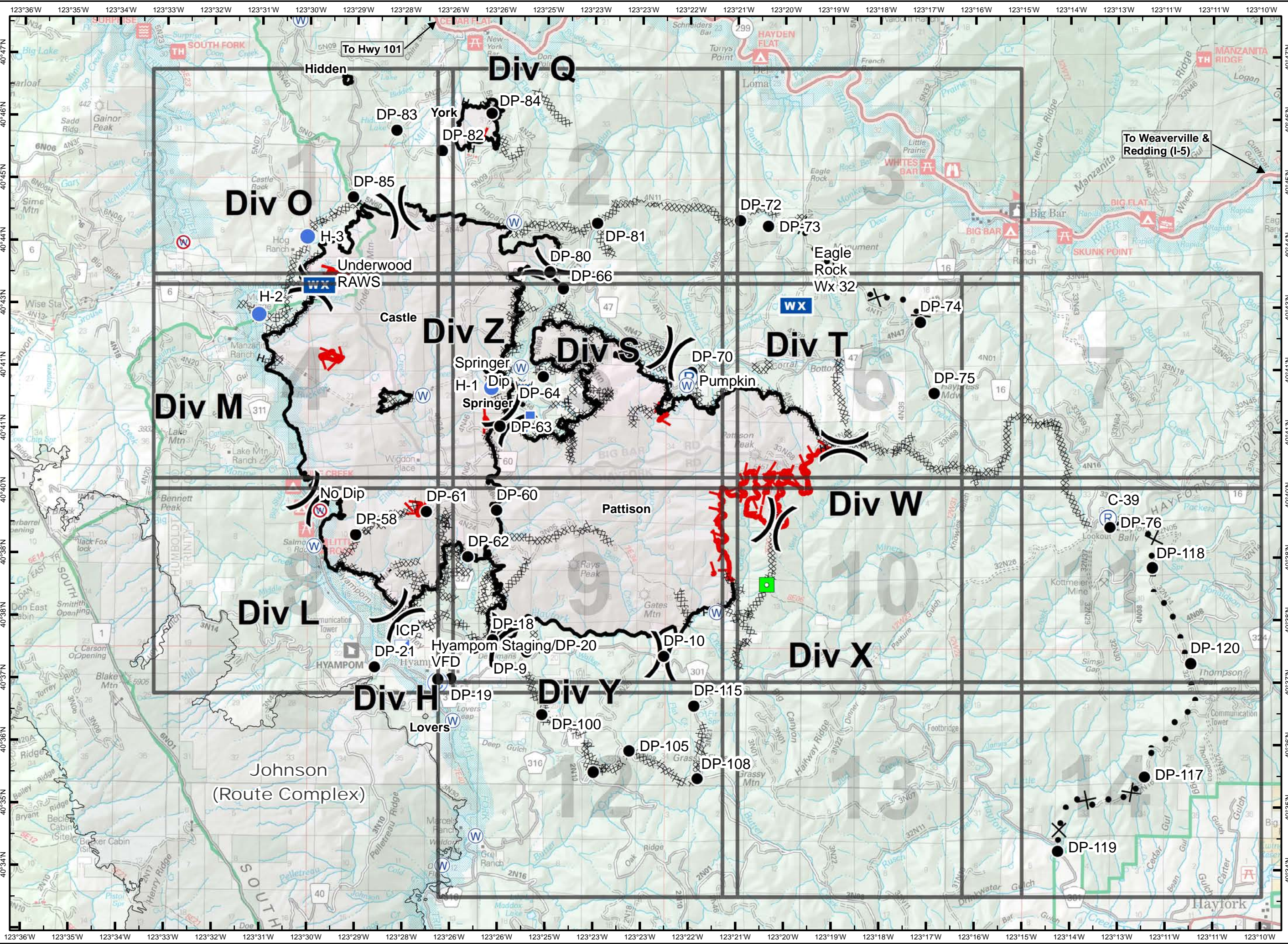


29,275 acres as of
8/27/2015 @ 1600 hrs

- () Division Break
- Uncontrolled Fire Edge
- Contained Fire Edge
- H - H - Hand Line
- Completed Dozer Line
- Proposed Dozer Line
- Incident Command Post
- Drop Point
- Staging Area
- Repeater
- Helispot
- Dip Site
- Water Source
- Restricted Water Source
- Equipment Location



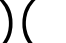


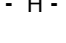













UTM 10 NAD 83
0 0.5 1 2
Miles

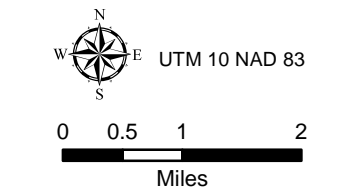


South Complex CA-SHF-002108

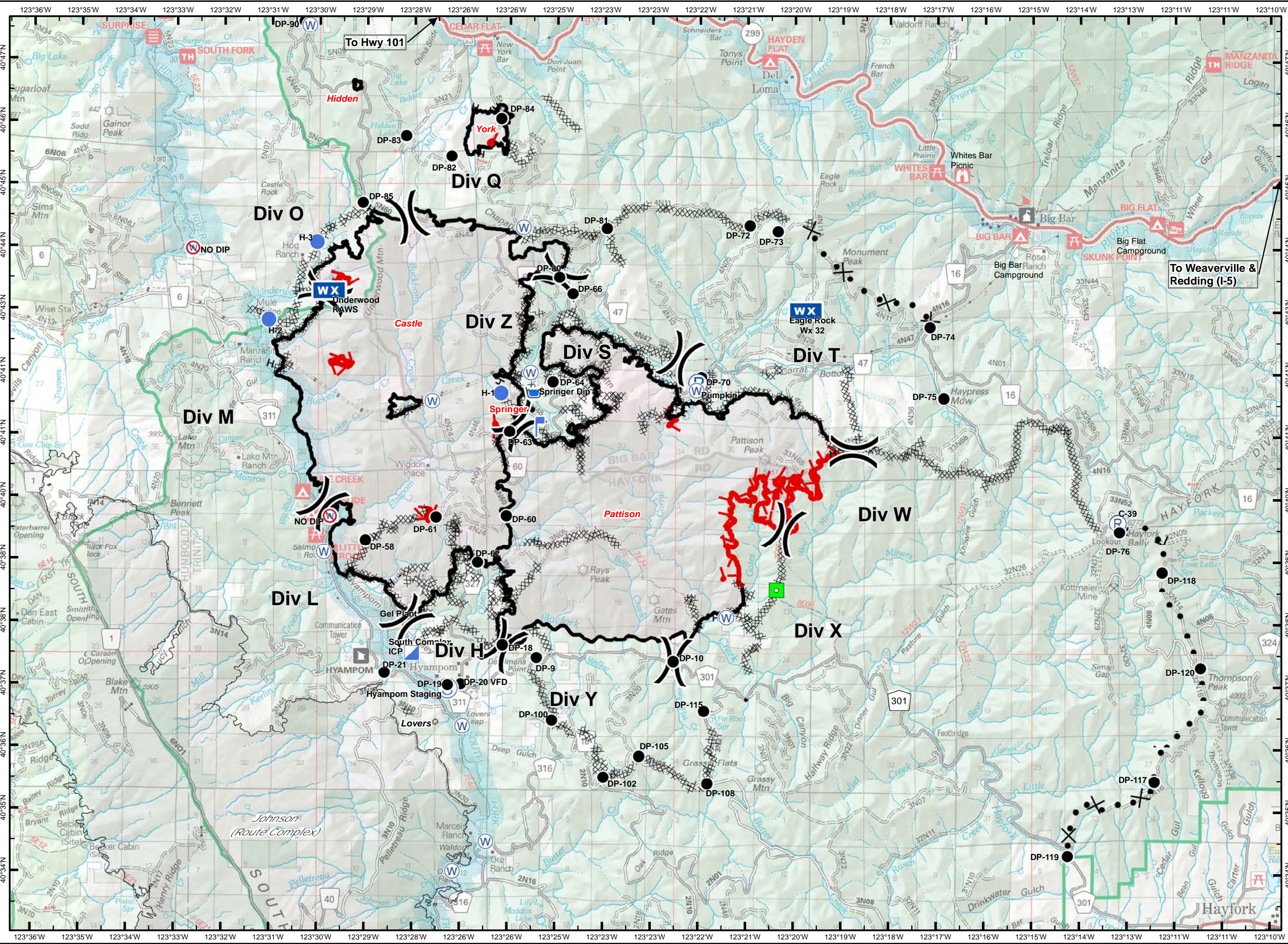
IAP Map Packet Transportation Map

August 31, 2015

-  Division Break
-  Uncontrolled Fire Edge
-  Completed Line
-  Hand Line
-  Completed Dozer Line
-  Proposed Dozer Line
-  Incident Command Post
-  Drop Point
-  Staging Area
-  Repeater
-  Helispot
-  Dip Site
-  Water Source
-  Restricted Water Source
-  Pump
-  Lookout
-  Equipment Location



8/30/2015 9:53:59 PM

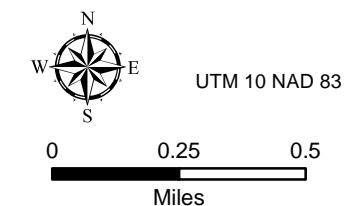


South Complex CA-SHF-002108

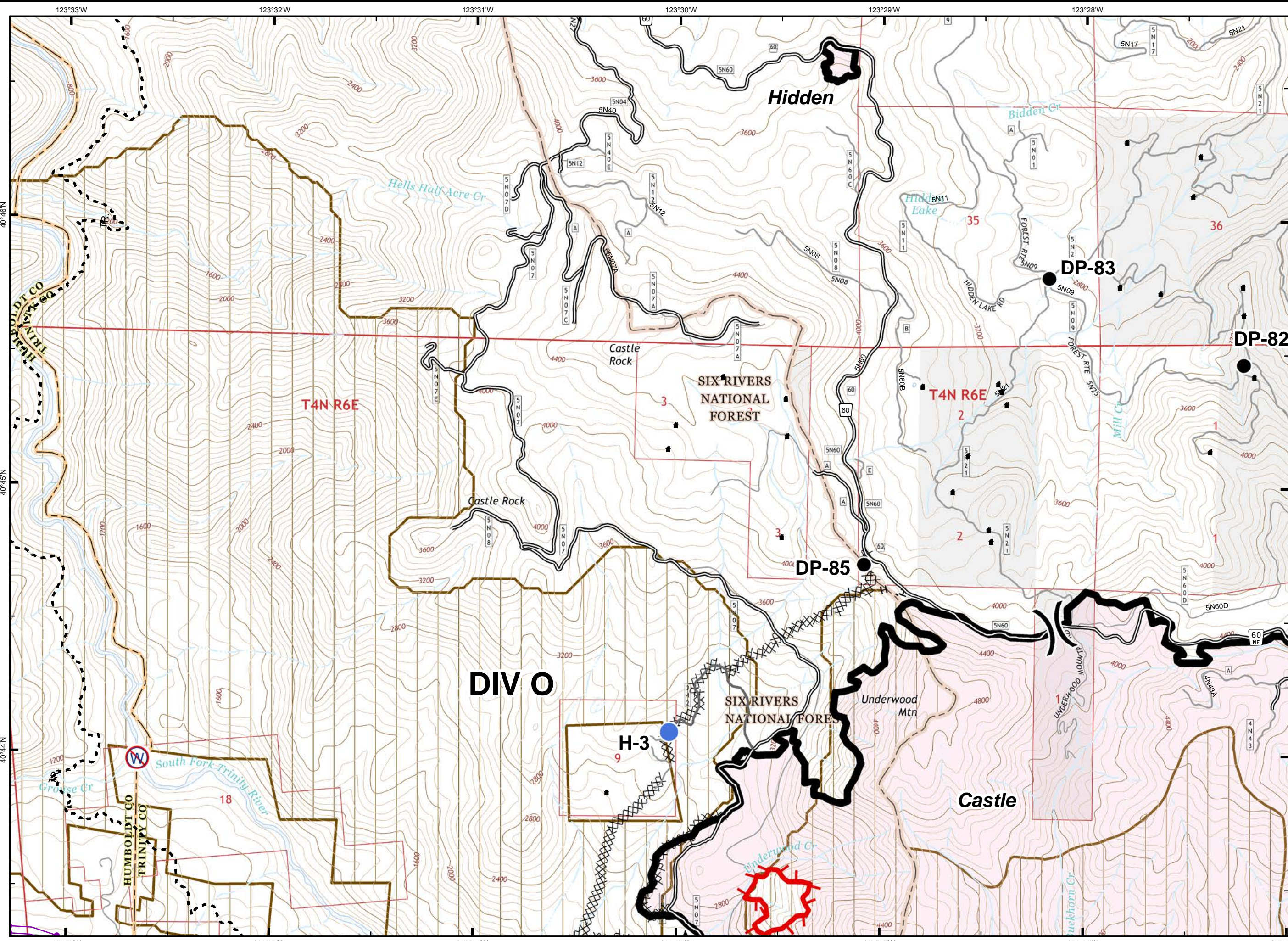
August 31, 2015



- Division Break
- ICP
- Drop Point
- Staging Area
- Repeater
- Helispot
- Dip Site
- Water Source
- Restr. Water Source
- Pump
- Mobile Weather Unit
- Lookout
- Equipment Location
- Uncontrolled Fire Edge
- Contained Fire Edge
- H - H-Hand Line
- Completed Dozer Line
- Proposed Dozer Line
- Nat'l Forest Boundary
- Wilderness
- Wild and Scenic River
- Roadless Area
- Non-USFS Land



1	2	3	
4	5	6	7
8	9	10	11
	12	13	14

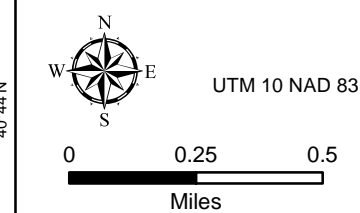


South Complex CA-SHF-002108

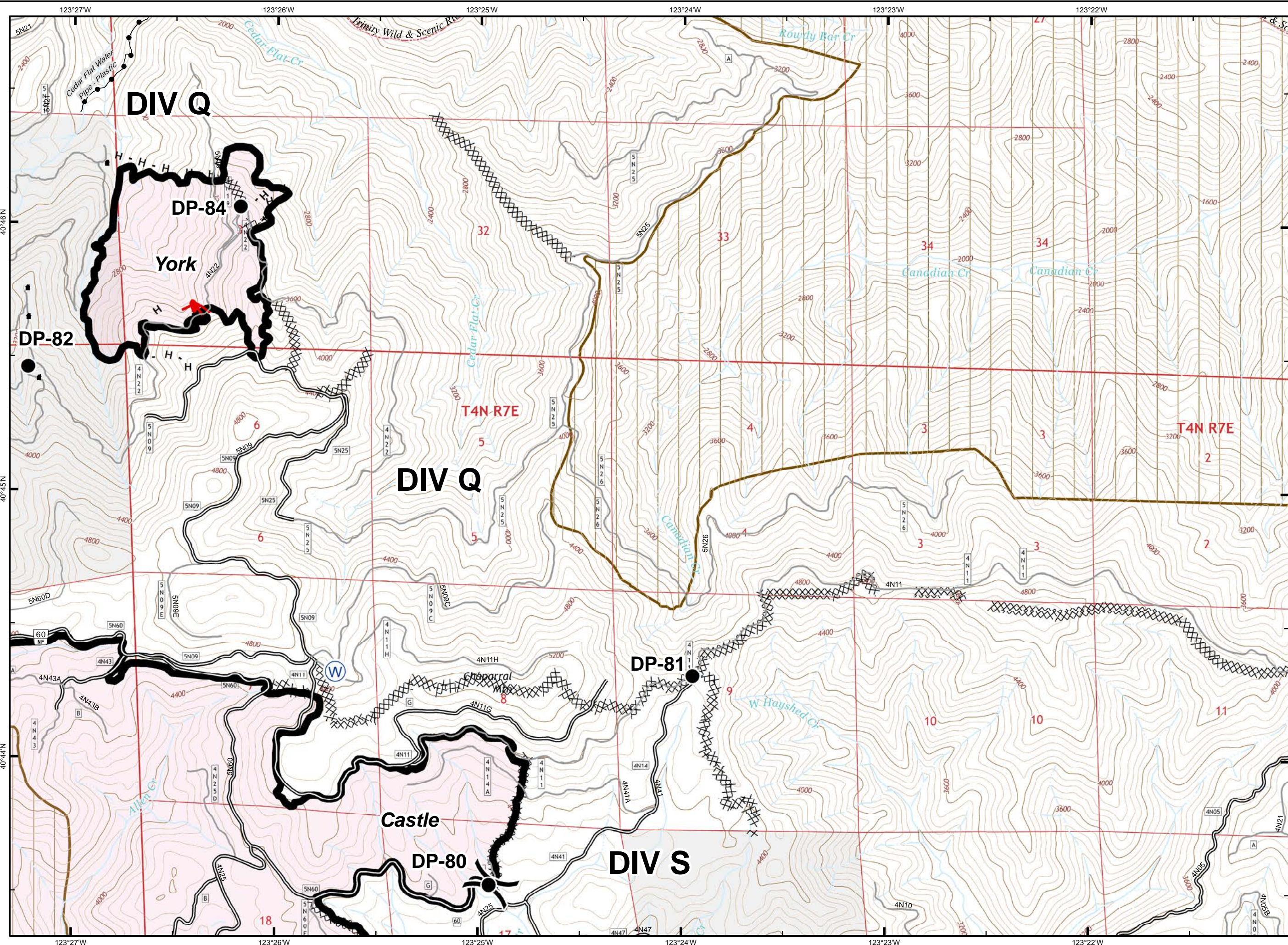
August 31, 2015



- Division Break
- ICP
- Drop Point
- Staging Area
- Repeater
- Helispot
- Dip Site
- Water Source
- Restr. Water Source
- Pump
- Mobile Weather Unit
- Lookout
- Equipment Location
- Uncontrolled Fire Edge
- Contained Fire Edge
- H - H - Hand Line
- Completed Dozer Line
- Proposed Dozer Line
- Nat'l Forest Boundary
- Wilderness
- Wild and Scenic River
- Roadless Area
- Non-USFS Land



1	2	3	
4	5	6	7
8	9	10	11
	12	13	14

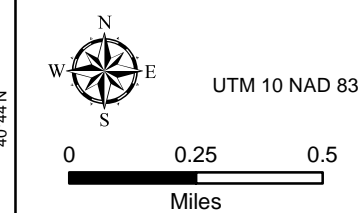


South Complex CA-SHF-002108

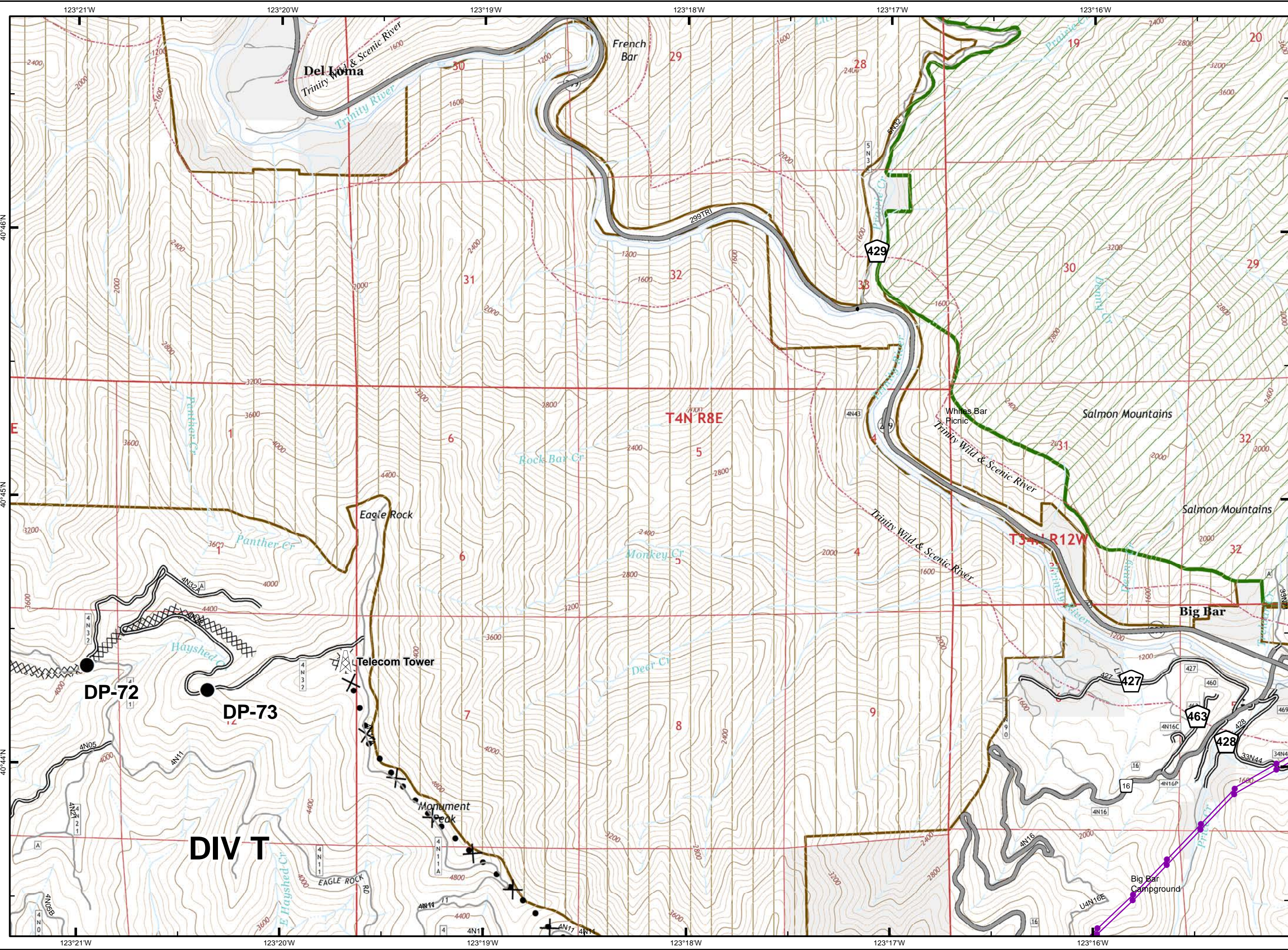
August 31, 2015



- Division Break
- ICP
- Drop Point
- Staging Area
- Repeater
- Helispot
- Dip Site
- Water Source
- Restr. Water Source
- Pump
- Mobile Weather Unit
- Lookout
- Equipment Location
- Uncontrolled Fire Edge
- Contained Fire Edge
- H - H - Hand Line
- Completed Dozer Line
- Proposed Dozer Line
- Nat'l Forest Boundary
- Wilderness
- Wild and Scenic River
- Roadless Area
- Non-USFS Land

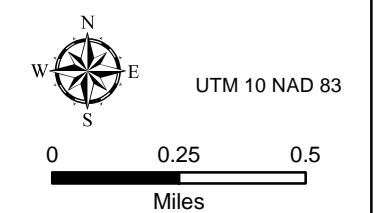


1	2	3	
4	5	6	7
8	9	10	11
	12	13	14

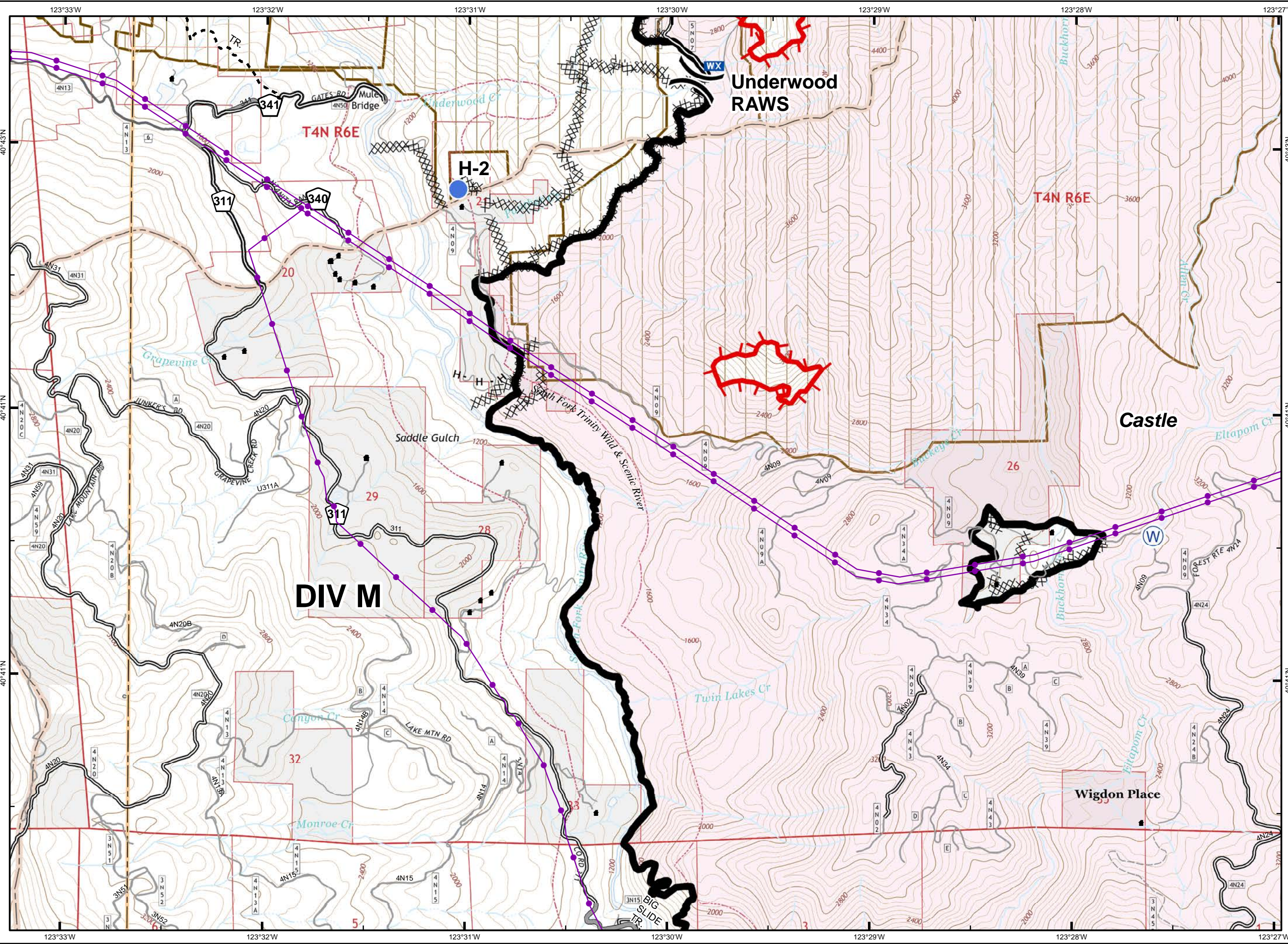




- Division Break
- ICP
- Drop Point
- Staging Area
- Repeater
- Helispot
- Dip Site
- Water Source
- Restr. Water Source
- Pump
- Mobile Weather Unit
- Lookout
- Equipment Location
- Uncontrolled Fire Edge
- Contained Fire Edge
- H - H - Hand Line
- Completed Dozer Line
- Proposed Dozer Line
- Nat'l Forest Boundary
- Wilderness
- Wild and Scenic River
- Roadless Area
- Non-USFS Land



1	2	3	
4	5	6	7
8	9	10	11
	12	13	14

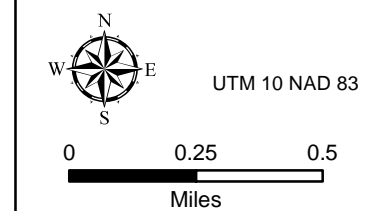


South Complex CA-SHF-002108

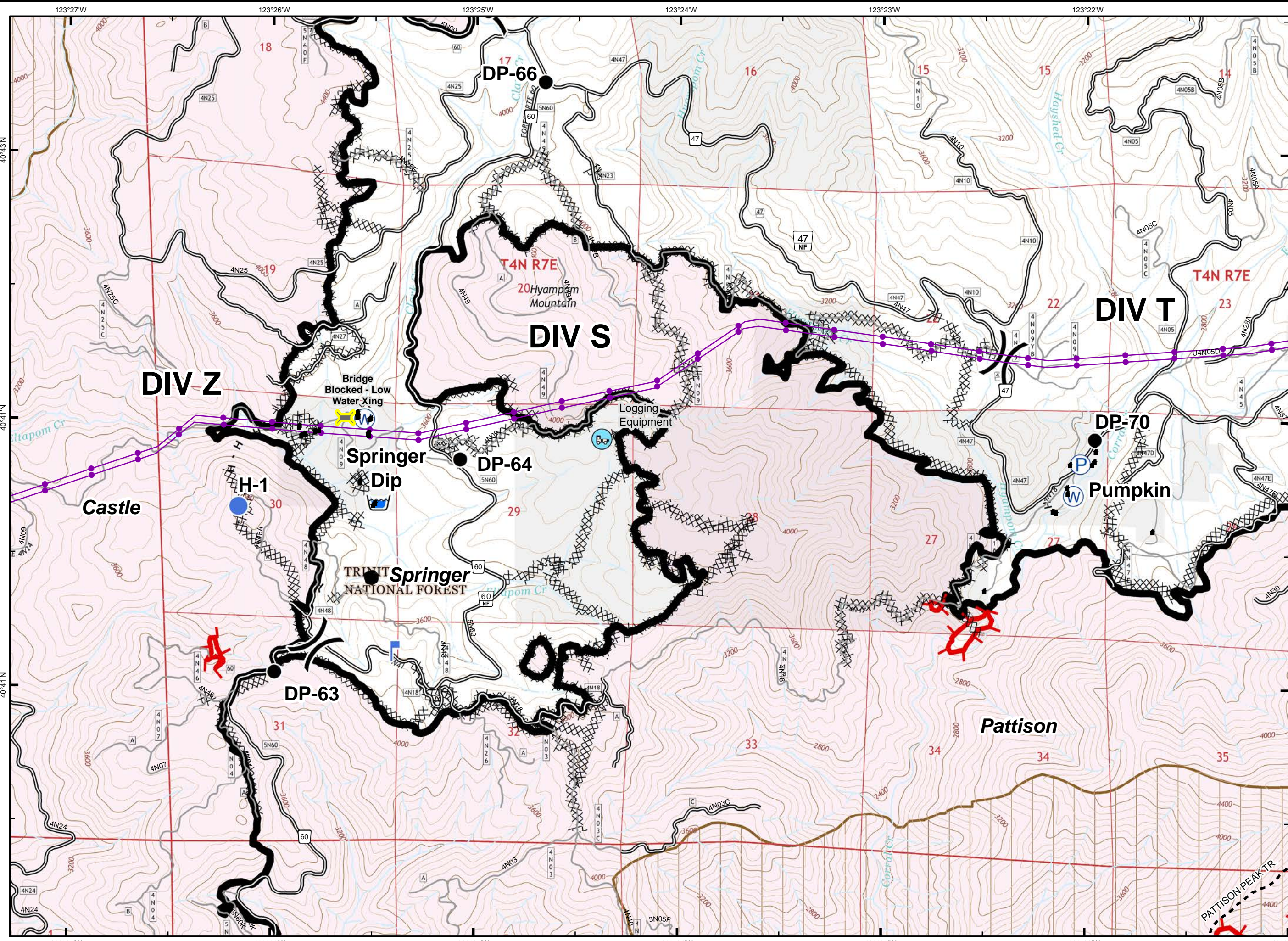
August 31, 2015



- Division Break
- ICP
- Drop Point
- Staging Area
- Repeater
- Helispot
- Dip Site
- Water Source
- Restr. Water Source
- Pump
- Mobile Weather Unit
- Lookout
- Equipment Location
- Uncontrolled Fire Edge
- Contained Fire Edge
- H - H - Hand Line
- Completed Dozer Line
- Proposed Dozer Line
- Nat'l Forest Boundary
- Wilderness
- Wild and Scenic River
- Roadless Area
- Non-USFS Land



1	2	3
4	5	6
8	9	10
	12	13

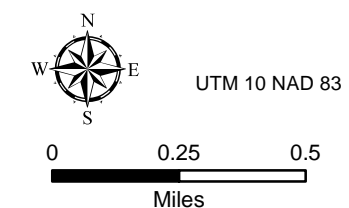


South Complex CA-SHF-002108

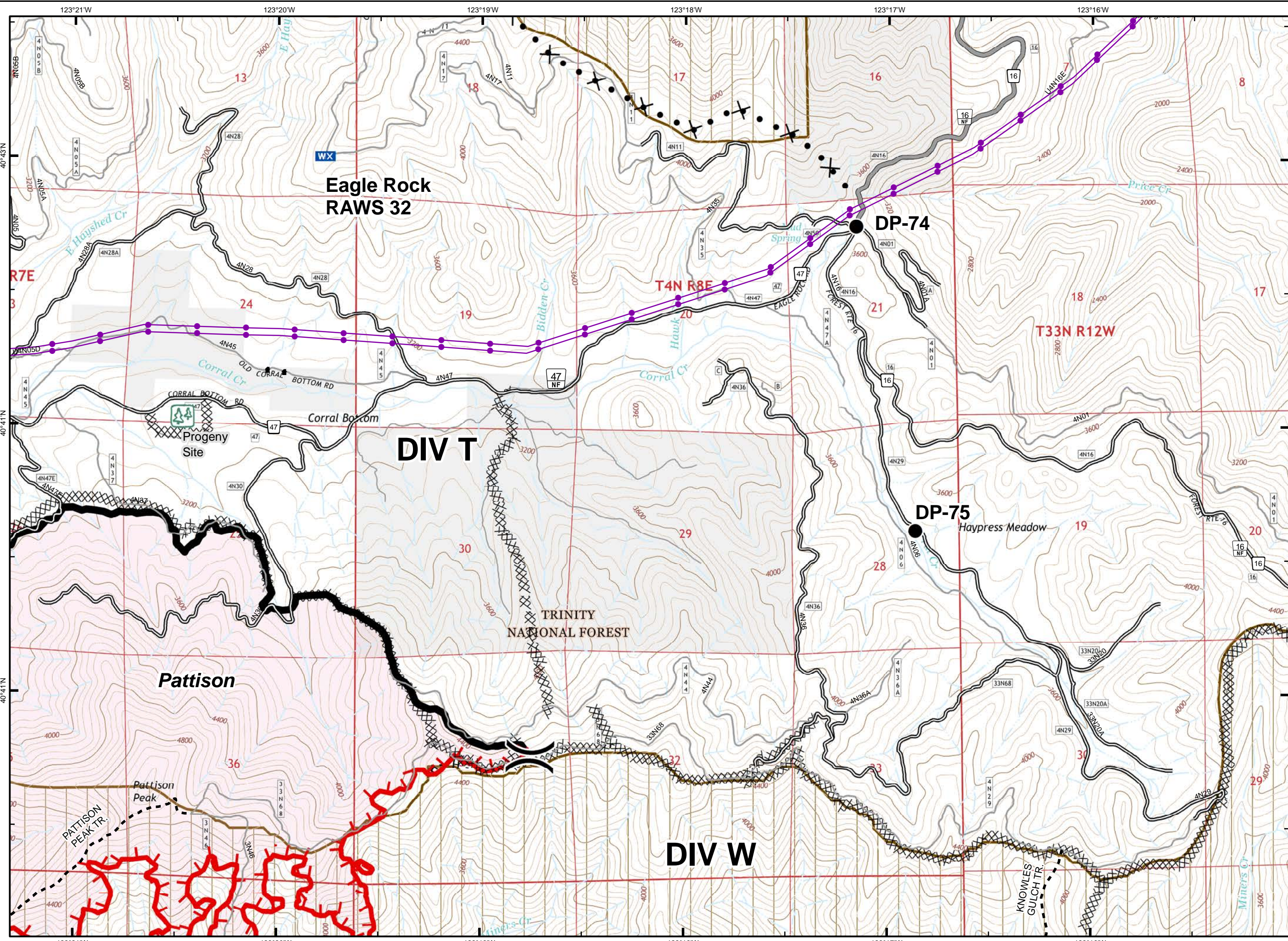
August 31, 2015



- Division Break
- ICP
- Drop Point
- Staging Area
- Repeater
- Helispot
- Dip Site
- Water Source
- Restr. Water Source
- Pump
- Mobile Weather Unit
- Lookout
- Equipment Location
- Uncontrolled Fire Edge
- Contained Fire Edge
- H - H-Hand Line
- Completed Dozer Line
- Proposed Dozer Line
- Nat'l Forest Boundary
- Wilderness
- Wild and Scenic River
- Roadless Area
- Non-USFS Land



1	2	3
4	5	6
8	9	10
	12	13
		14

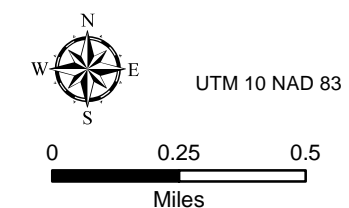


South Complex CA-SHF-002108

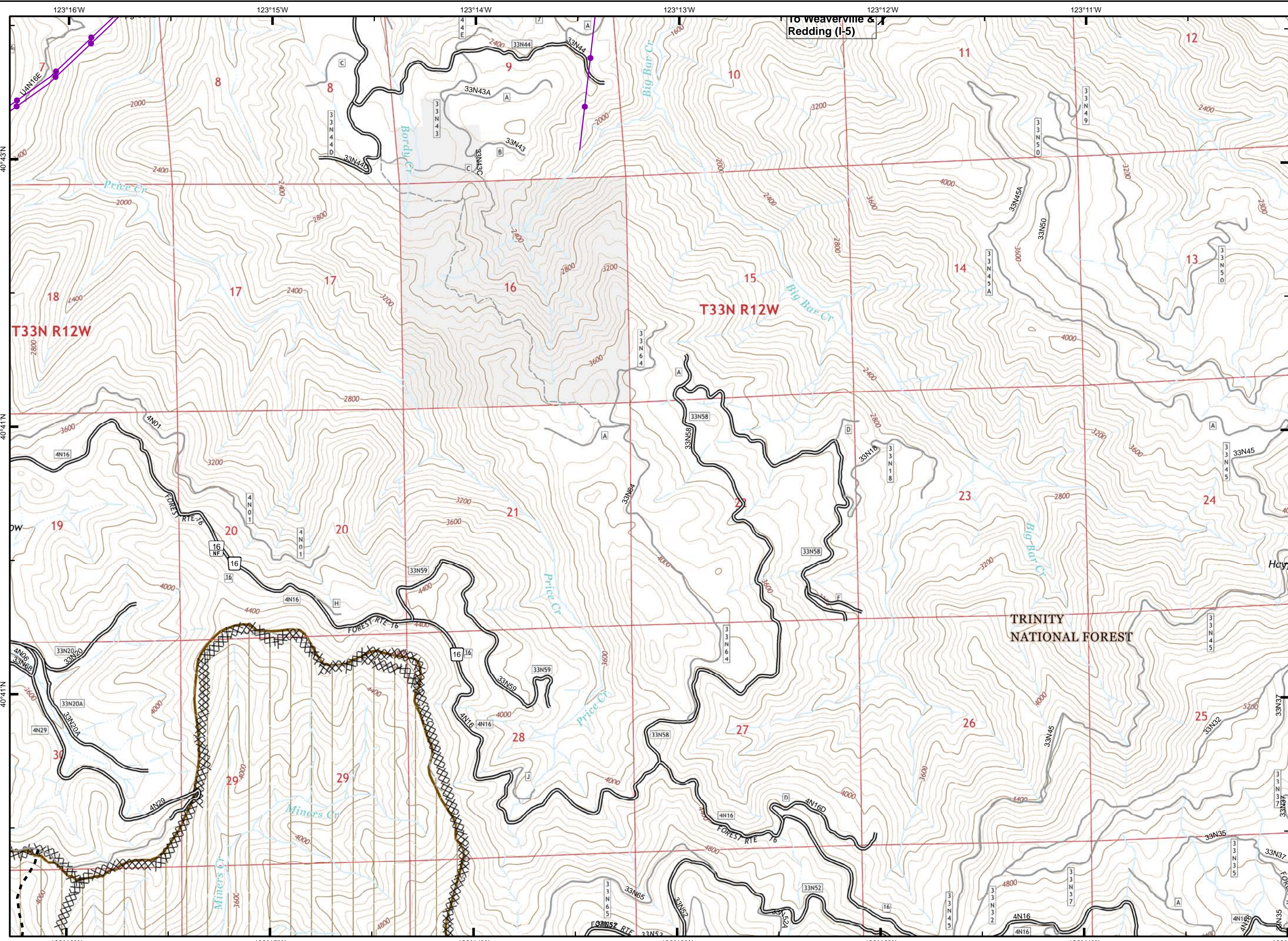
August 31, 2015



- Division Break
- ICP
- Drop Point
- Staging Area
- Repeater
- Helispot
- Dip Site
- Water Source
- Restr. Water Source
- Pump
- Mobile Weather Unit
- Lookout
- Equipment Location
- Uncontrolled Fire Edge
- Contained Fire Edge
- H - H-Hand Line
- Completed Dozer Line
- Proposed Dozer Line
- Nat'l Forest Boundary
- Wilderness
- Wild and Scenic River
- Roadless Area
- Non-USFS Land

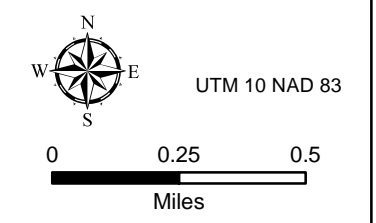


1	2	3	4
4	5	6	7
8	9	10	11
	12	13	14

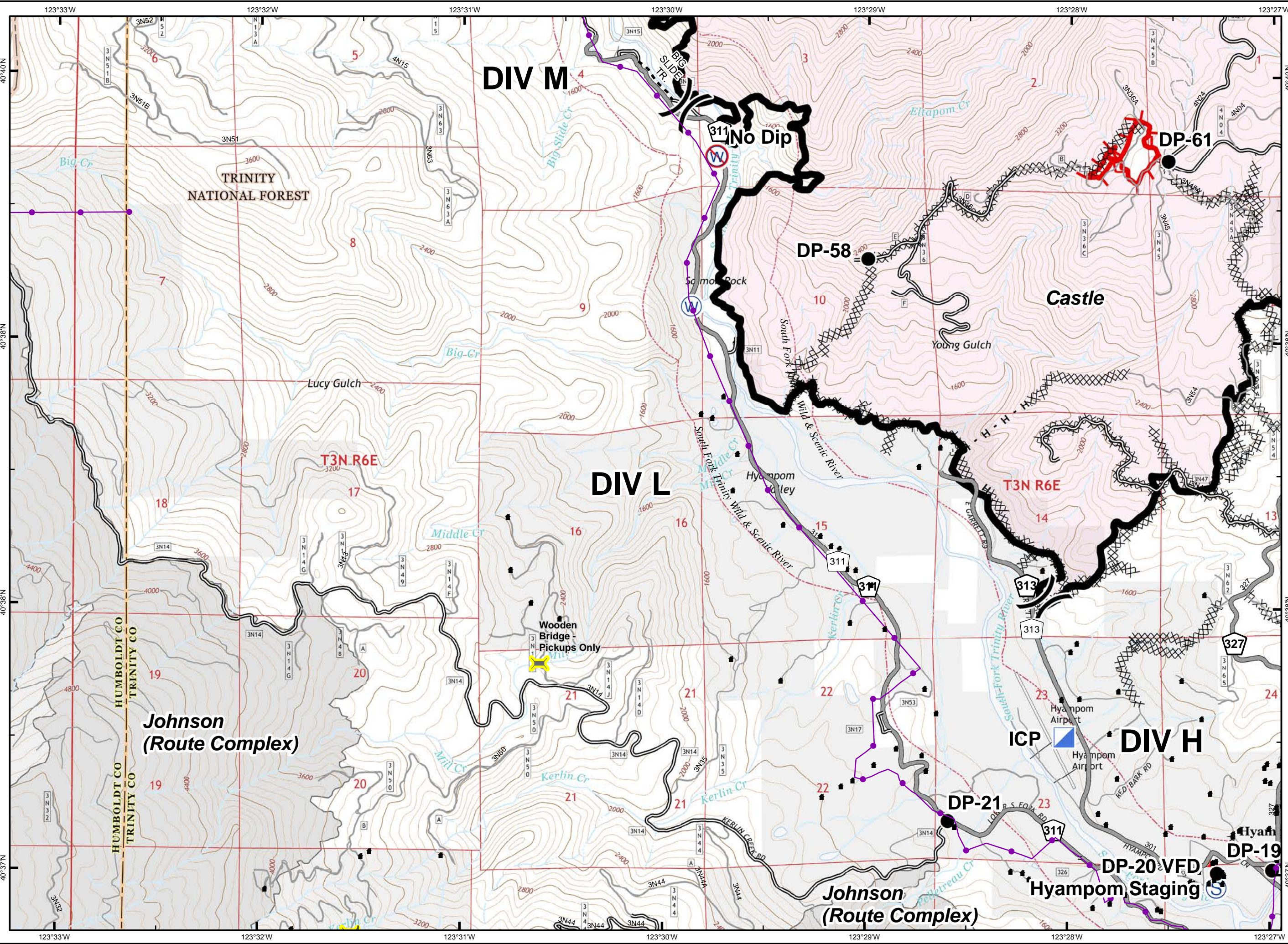




- Division Break
- ICP
- Drop Point
- Staging Area
- Repeater
- Helispot
- Dip Site
- Water Source
- Restr. Water Source
- Pump
- Mobile Weather Unit
- Lookout
- Equipment Location
- Uncontrolled Fire Edge
- Contained Fire Edge
- H - H - Hand Line
- Completed Dozer Line
- Proposed Dozer Line
- Nat'l Forest Boundary
- Wilderness
- Wild and Scenic River
- Roadless Area
- Non-USFS Land

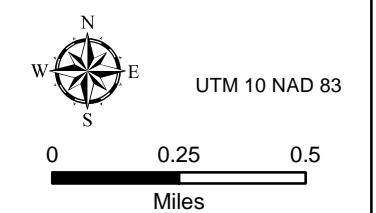


1	2	3	
4	5	6	7
8	9	10	11
	12	13	14

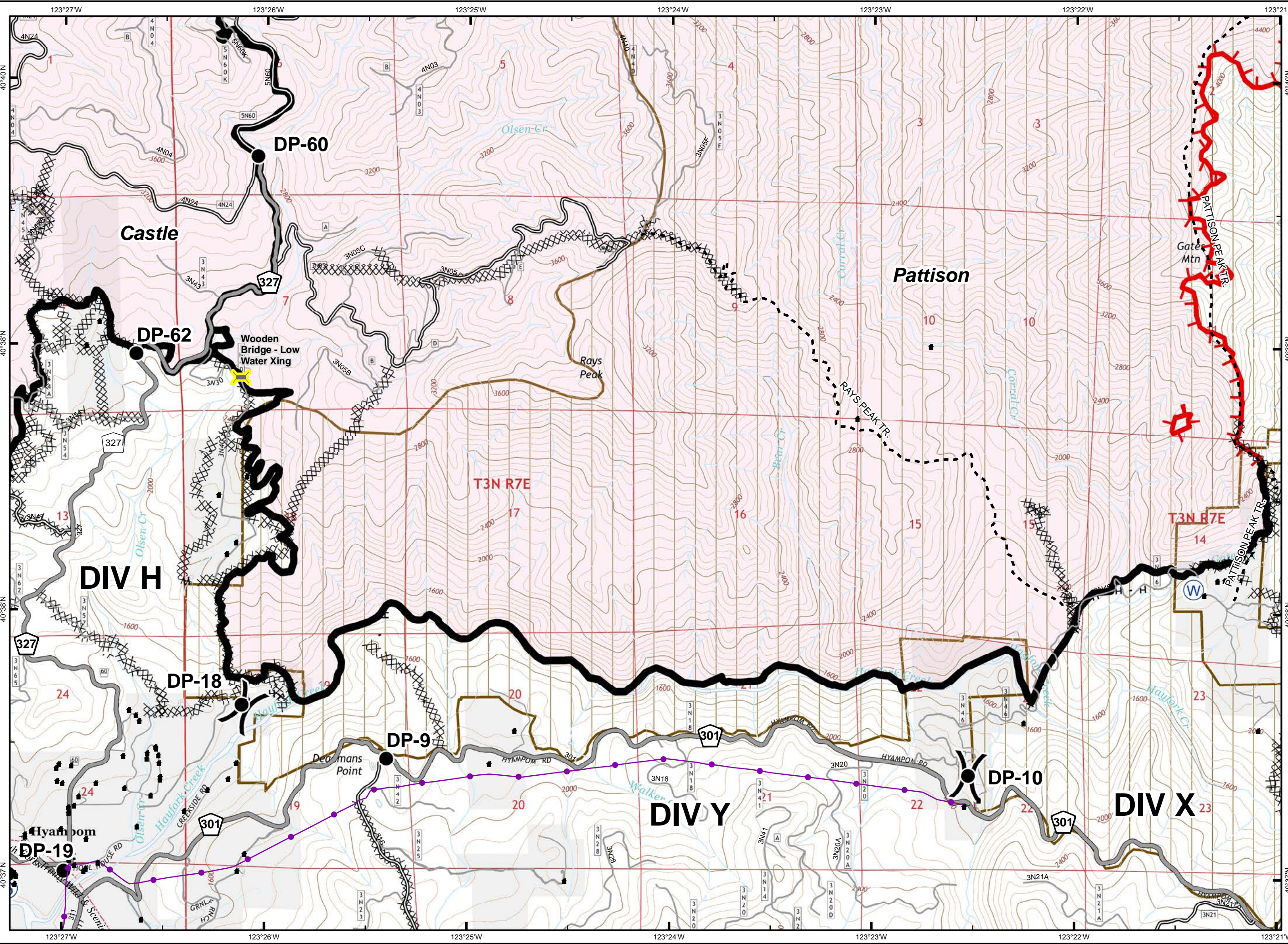




- Division Break
- ICP
- Drop Point
- Staging Area
- Repeater
- Helispot
- Dip Site
- Water Source
- Restr. Water Source
- Pump
- Mobile Weather Unit
- Lookout
- Equipment Location
- Uncontrolled Fire Edge
- Contained Fire Edge
- H - H - Hand Line
- Completed Dozer Line
- Proposed Dozer Line
- Nat'l Forest Boundary
- Wilderness
- Wild and Scenic River
- Roadless Area
- Non-USFS Land



1	2	3	
4	5	6	7
8	9	10	11
	12	13	14

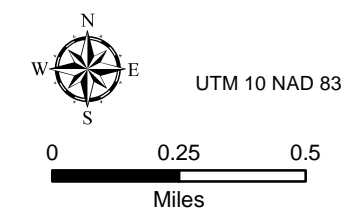


South Complex CA-SHF-002108

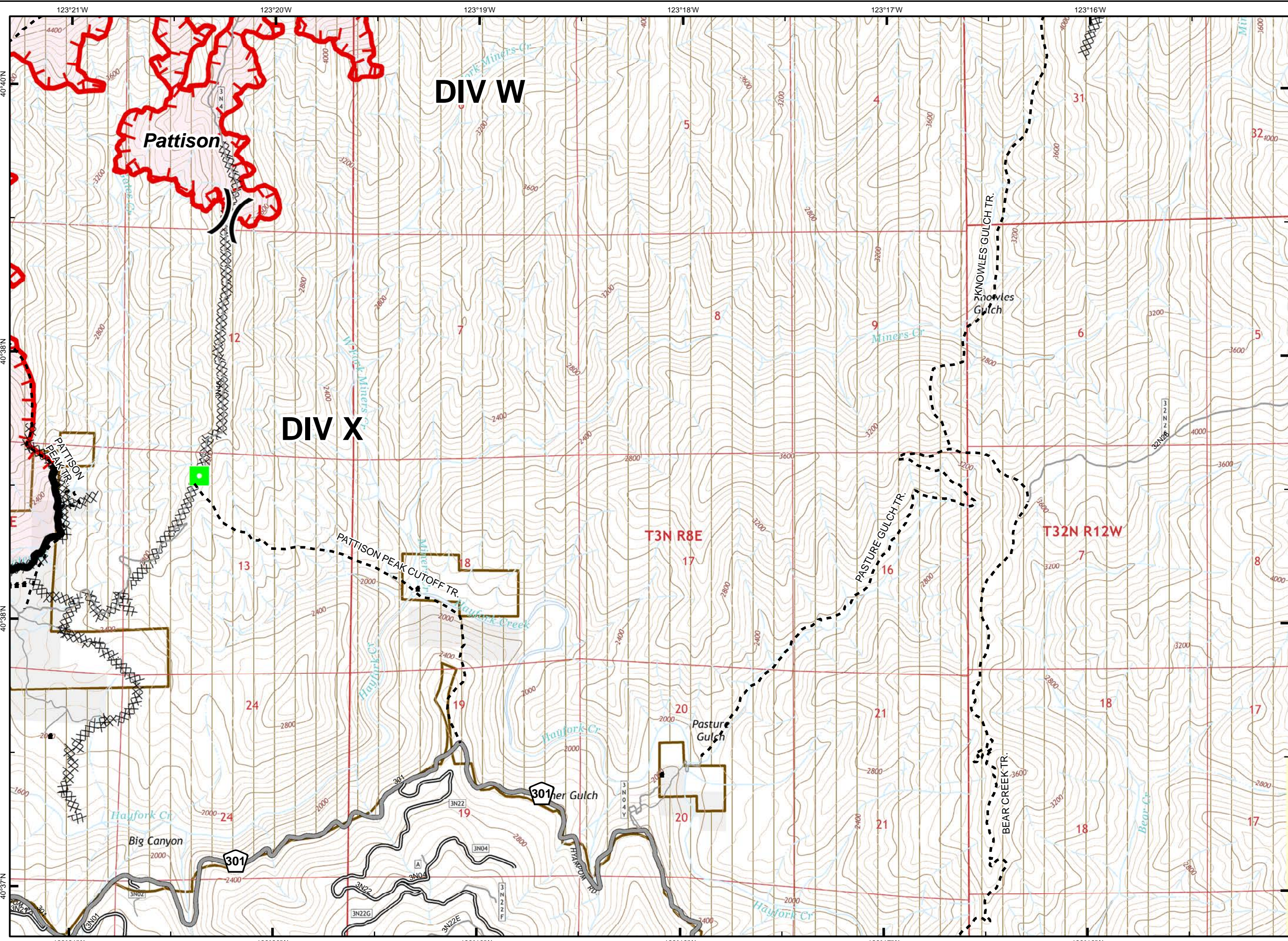
August 31, 2015



- Division Break
- ICP
- Drop Point
- Staging Area
- Repeater
- Helispot
- Dip Site
- Water Source
- Restr. Water Source
- Pump
- Mobile Weather Unit
- Lookout
- Equipment Location
- Uncontrolled Fire Edge
- Contained Fire Edge
- H - H - Hand Line
- Completed Dozer Line
- Proposed Dozer Line
- Nat'l Forest Boundary
- Wilderness
- Wild and Scenic River
- Roadless Area
- Non-USFS Land

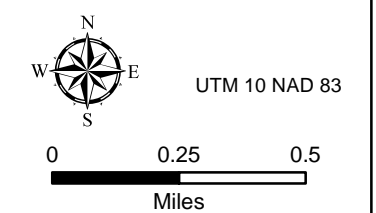


1	2	3
4	5	6
8	9	10
	12	13

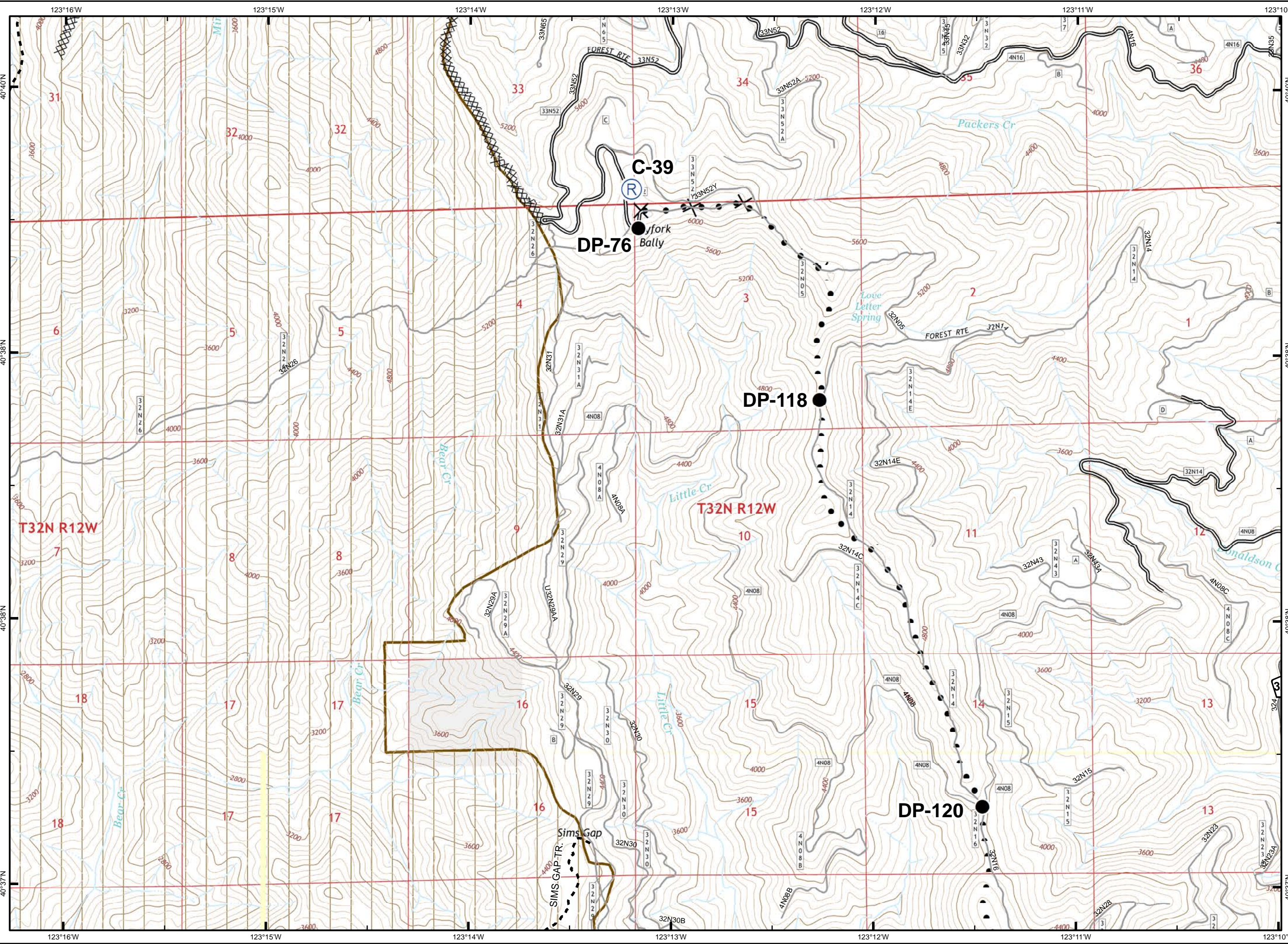




- Division Break
- ICP
- Drop Point
- Staging Area
- Repeater
- Helispot
- Dip Site
- Water Source
- Restr. Water Source
- Pump
- Mobile Weather Unit
- Lookout
- Equipment Location
- Uncontrolled Fire Edge
- Contained Fire Edge
- H - H - Hand Line
- Completed Dozer Line
- Proposed Dozer Line
- Nat'l Forest Boundary
- Wilderness
- Wild and Scenic River
- Roadless Area
- Non-USFS Land



1	2	3
4	5	6
8	9	10
	12	13



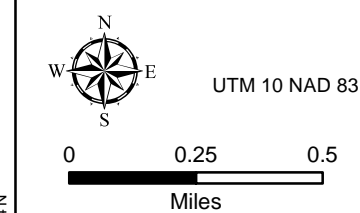
123°16'W 123°15'W 123°14'W 123°13'W 123°12'W 123°11'W 123°10'W

40°40'N 40°38'N 40°37'N

123°16'W 123°15'W 123°14'W 123°13'W 123°12'W 123°11'W 123°10'W

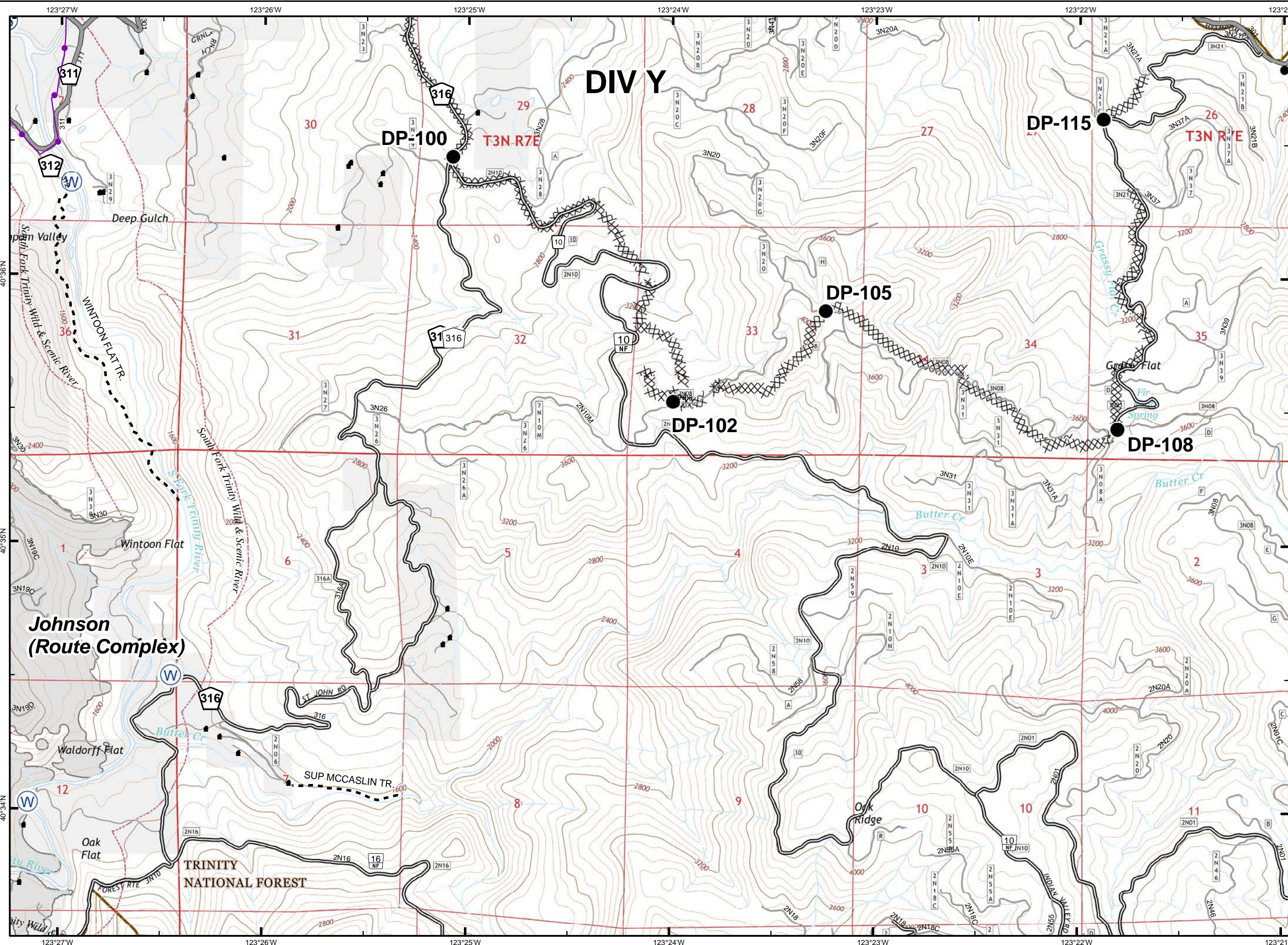


- Division Break
- ICP
- Drop Point
- Staging Area
- Repeater
- Helispot
- Dip Site
- Water Source
- Restr. Water Source
- Pump
- Mobile Weather Unit
- Lookout
- Equipment Location
- Uncontrolled Fire Edge
- Contained Fire Edge
- H - H - Hand Line
- Completed Dozer Line
- Proposed Dozer Line
- Nat'l Forest Boundary
- Wilderness
- Wild and Scenic River
- Roadless Area
- Non-USFS Land



0 0.25 0.5
Miles

1	2	3
4	5	6
8	9	10
	12	13

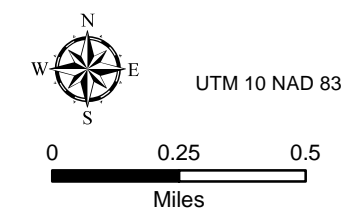


South Complex CA-SHF-002108

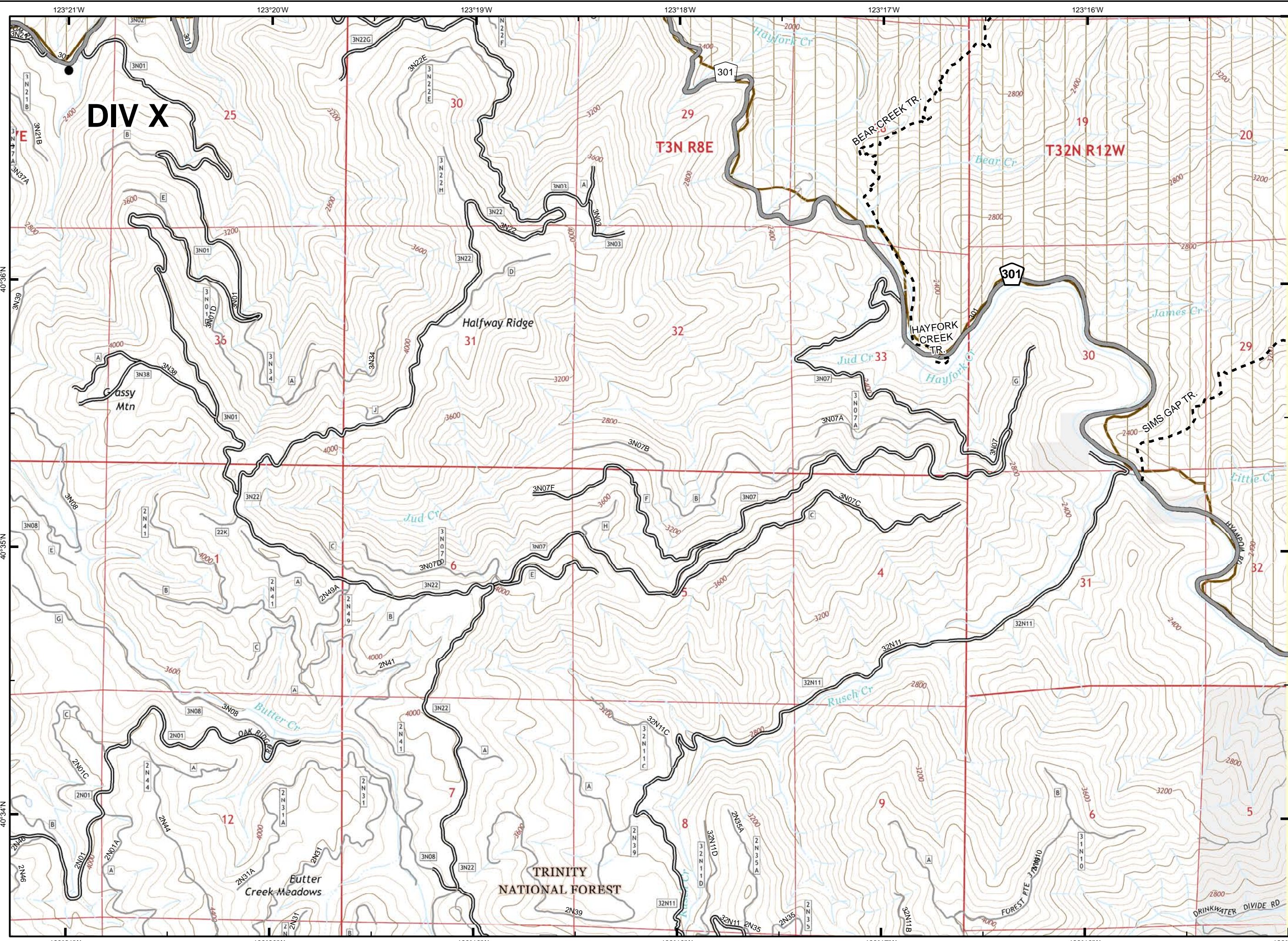
August 31, 2015



- Division Break
- ICP
- Drop Point
- Staging Area
- Repeater
- Helispot
- Dip Site
- Water Source
- Restr. Water Source
- Pump
- Mobile Weather Unit
- Lookout
- Equipment Location
- Uncontrolled Fire Edge
- Contained Fire Edge
- H - H - Hand Line
- Completed Dozer Line
- Proposed Dozer Line
- Nat'l Forest Boundary
- Wilderness
- Wild and Scenic River
- Roadless Area
- Non-USFS Land



1	2	3	
4	5	6	7
8	9	10	11
	12	13	14

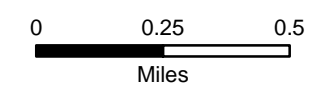
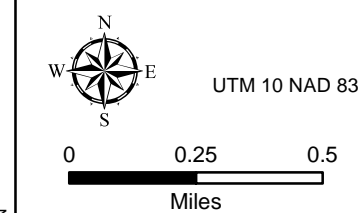


South Complex CA-SHF-002108

August 31, 2015



- Division Break
- ICP
- Drop Point
- Staging Area
- Repeater
- Helispot
- Dip Site
- Water Source
- Restr. Water Source
- Pump
- Mobile Weather Unit
- Lookout
- Equipment Location
- Uncontrolled Fire Edge
- Contained Fire Edge
- Hand Line
- Completed Dozer Line
- Proposed Dozer Line
- Nat'l Forest Boundary
- Wilderness
- Wild and Scenic River
- Roadless Area
- Non-USFS Land



1	2	3
4	5	6
8	9	10
	12	13
		14

