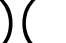


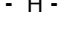















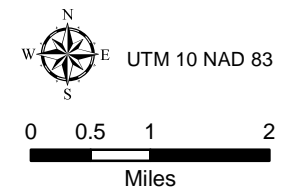


# South Complex CA-SHF-002108

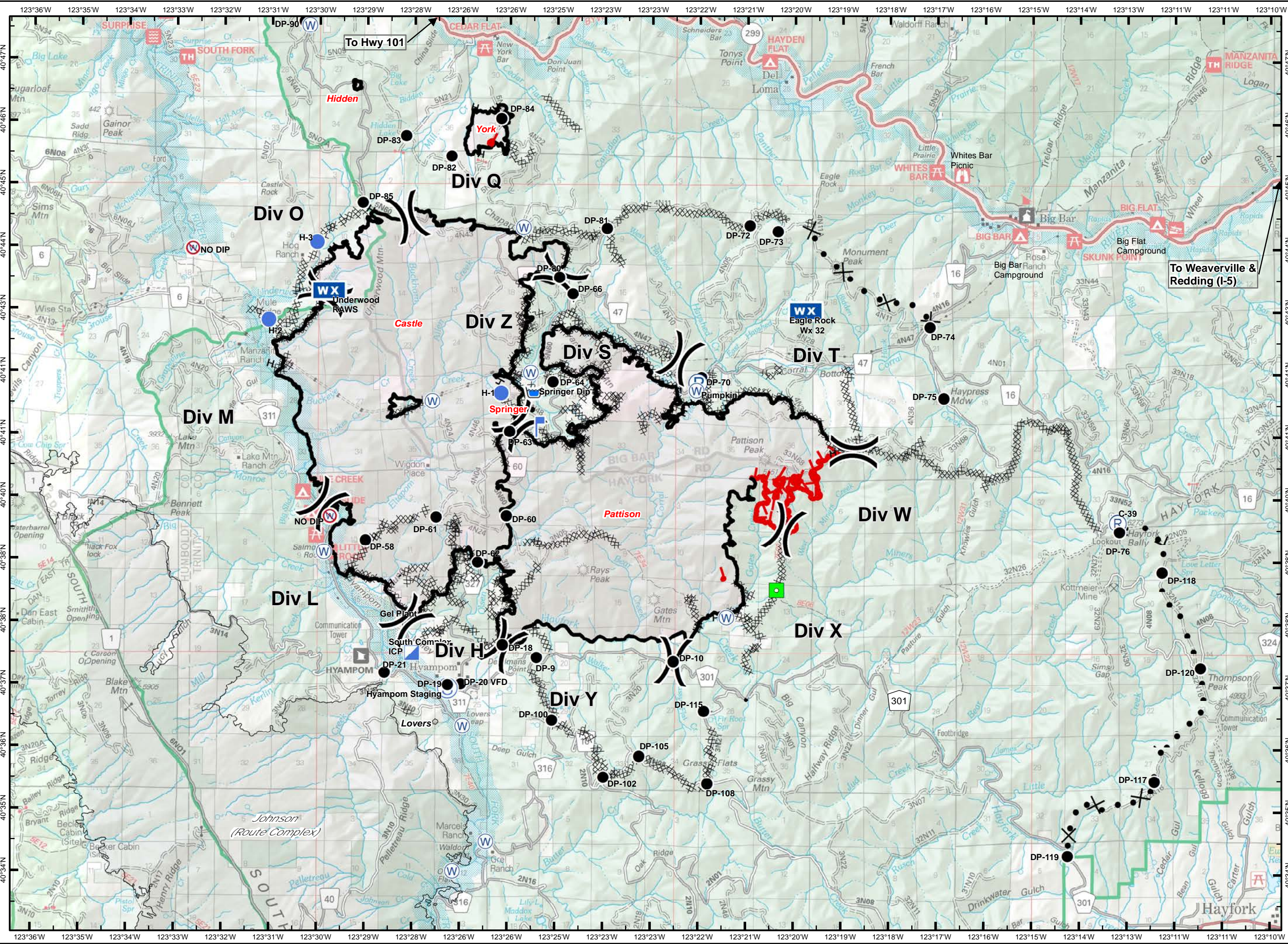
## IAP Map Packet Transportation Map

Sept. 1, 2015

-  Division Break
-  Uncontrolled Fire Edge
-  Completed Line
-  Hand Line
-  Completed Dozer Line
-  Proposed Dozer Line
-  Incident Command Post
-  Drop Point
-  Staging Area
-  Repeater
-  Helispot
-  Dip Site
-  Water Source
-  Restricted Water Source
-  Pump
-  Lookout
-  Equipment Location



8/31/2015 9:53:41 PM

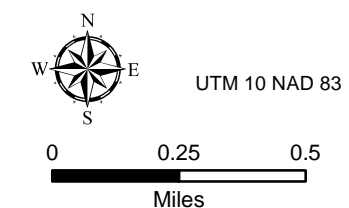


# South Complex CA-SHF-002108

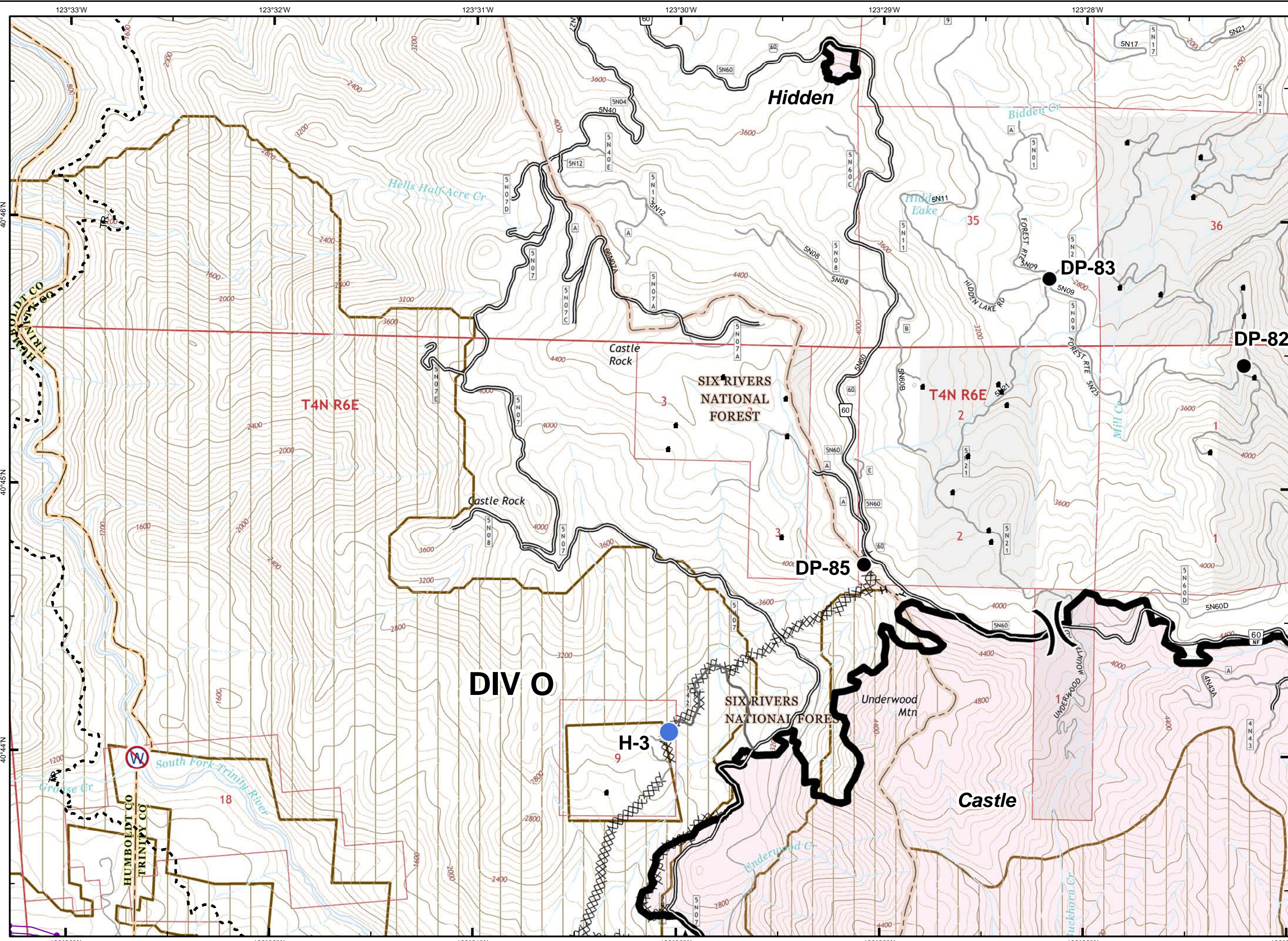
Sept. 1, 2015



- Division Break
- Uncontrolled Fire Edge
- Contained Fire Edge
- Hand Line
- Completed Dozer Line
- Proposed Dozer Line
- ICP
- Drop Point
- Staging Area
- Repeater
- Helispot
- Dip Site
- Water Source
- Restr. Water Source
- Pump
- Mobile Weather Unit
- Lookout
- Equipment Location
- Nat'l Forest Boundary
- Wilderness
- Wild and Scenic River
- Roadless Area
- Non-USFS Land



1	2	3	
4	5	6	7
8	9	10	11
	12	13	14

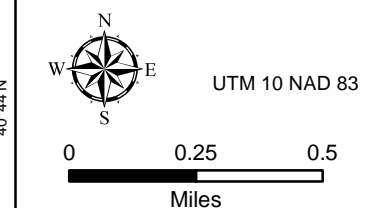


# South Complex CA-SHF-002108

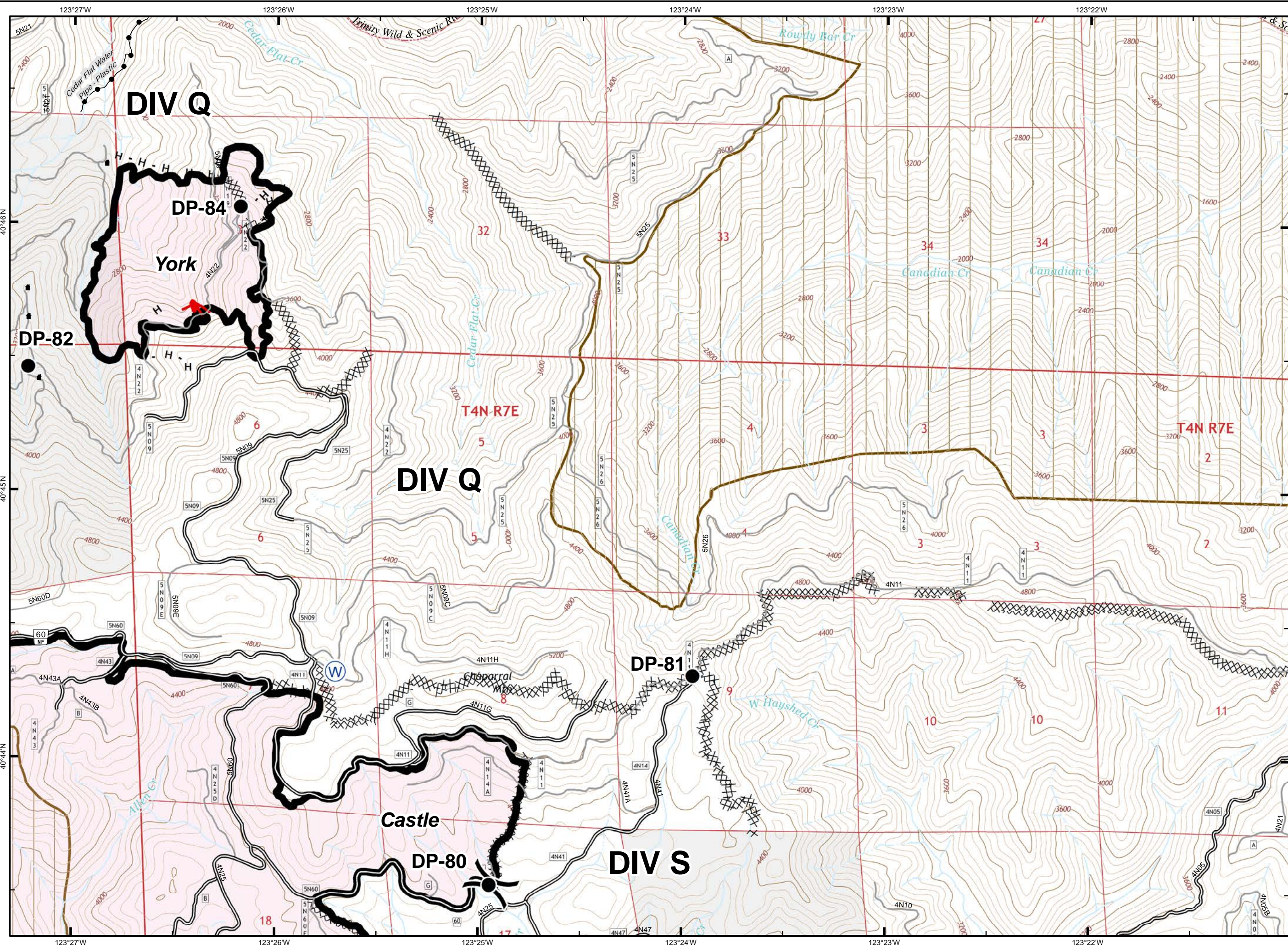
Sept. 1, 2015



- Division Break
- Uncontrolled Fire Edge
- Contained Fire Edge
- Hand Line
- Completed Dozer Line
- Proposed Dozer Line
- ICP
- Drop Point
- Staging Area
- Repeater
- Helispot
- Dip Site
- Water Source
- Restr. Water Source
- Pump
- Mobile Weather Unit
- Lookout
- Equipment Location
- Nat'l Forest Boundary
- Wilderness
- Wild and Scenic River
- Roadless Area
- Non-USFS Land



1	2	3	
4	5	6	7
8	9	10	11
	12	13	14

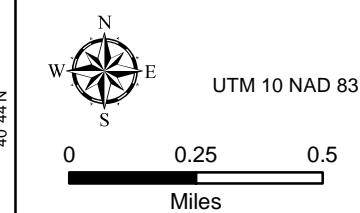


# South Complex CA-SHF-002108

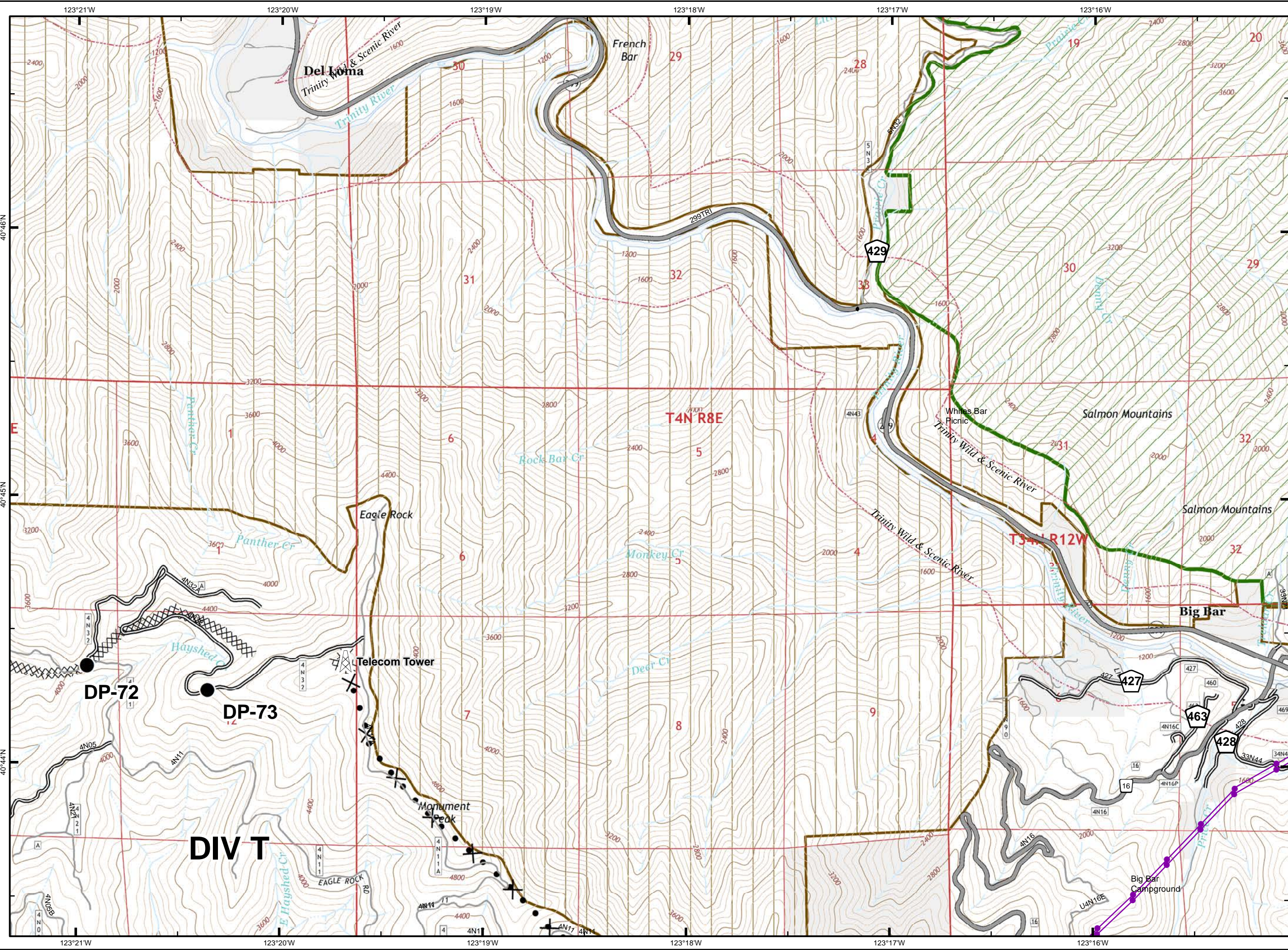
Sept. 1, 2015



- Division Break
- Uncontrolled Fire Edge
- Contained Fire Edge
- Hand Line
- Completed Dozer Line
- Proposed Dozer Line
- ICP
- Drop Point
- Staging Area
- Repeater
- Helispot
- Dip Site
- Water Source
- Restr. Water Source
- Pump
- Mobile Weather Unit
- Lookout
- Equipment Location
- Nat'l Forest Boundary
- Wilderness
- Wild and Scenic River
- Roadless Area
- Non-USFS Land



1	2	3
4	5	6
8	9	10
	12	13

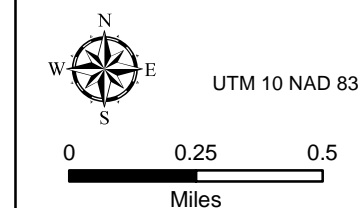


# South Complex CA-SHF-002108

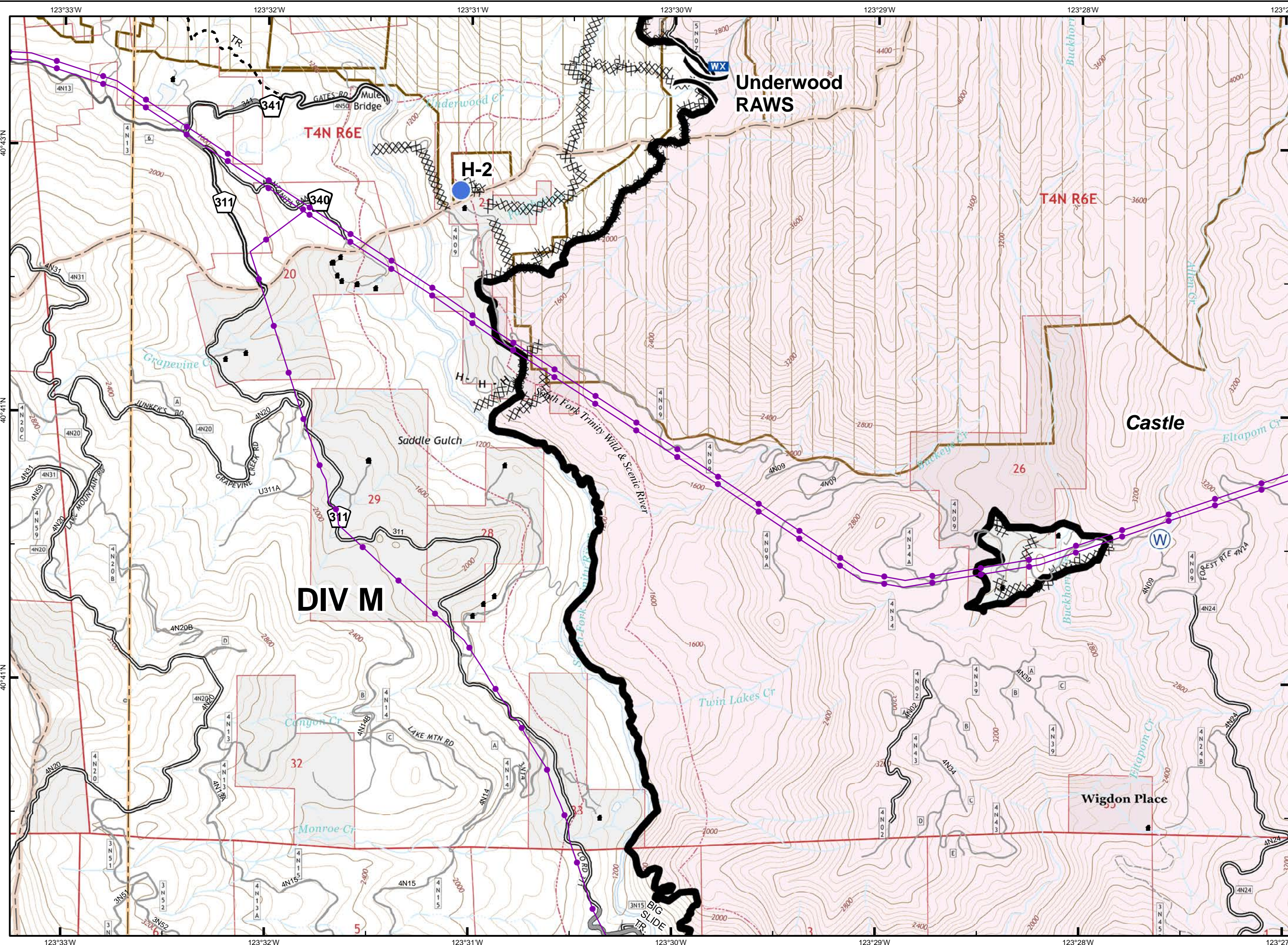
Sept. 1, 2015



- Division Break
- Uncontrolled Fire Edge
- Contained Fire Edge
- H - H - Hand Line
- Completed Dozer Line
- Proposed Dozer Line
- ICP
- Drop Point
- Staging Area
- Repeater
- Helispot
- Dip Site
- Water Source
- Restr. Water Source
- Pump
- Mobile Weather Unit
- Lookout
- Equipment Location
- Nat'l Forest Boundary
- Wilderness
- Wild and Scenic River
- Roadless Area
- Non-USFS Land



1	2	3	
4	5	6	7
8	9	10	11
	12	13	14

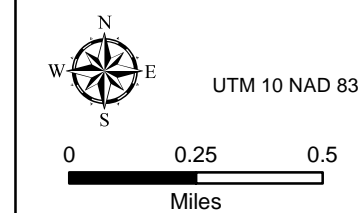


# South Complex CA-SHF-002108

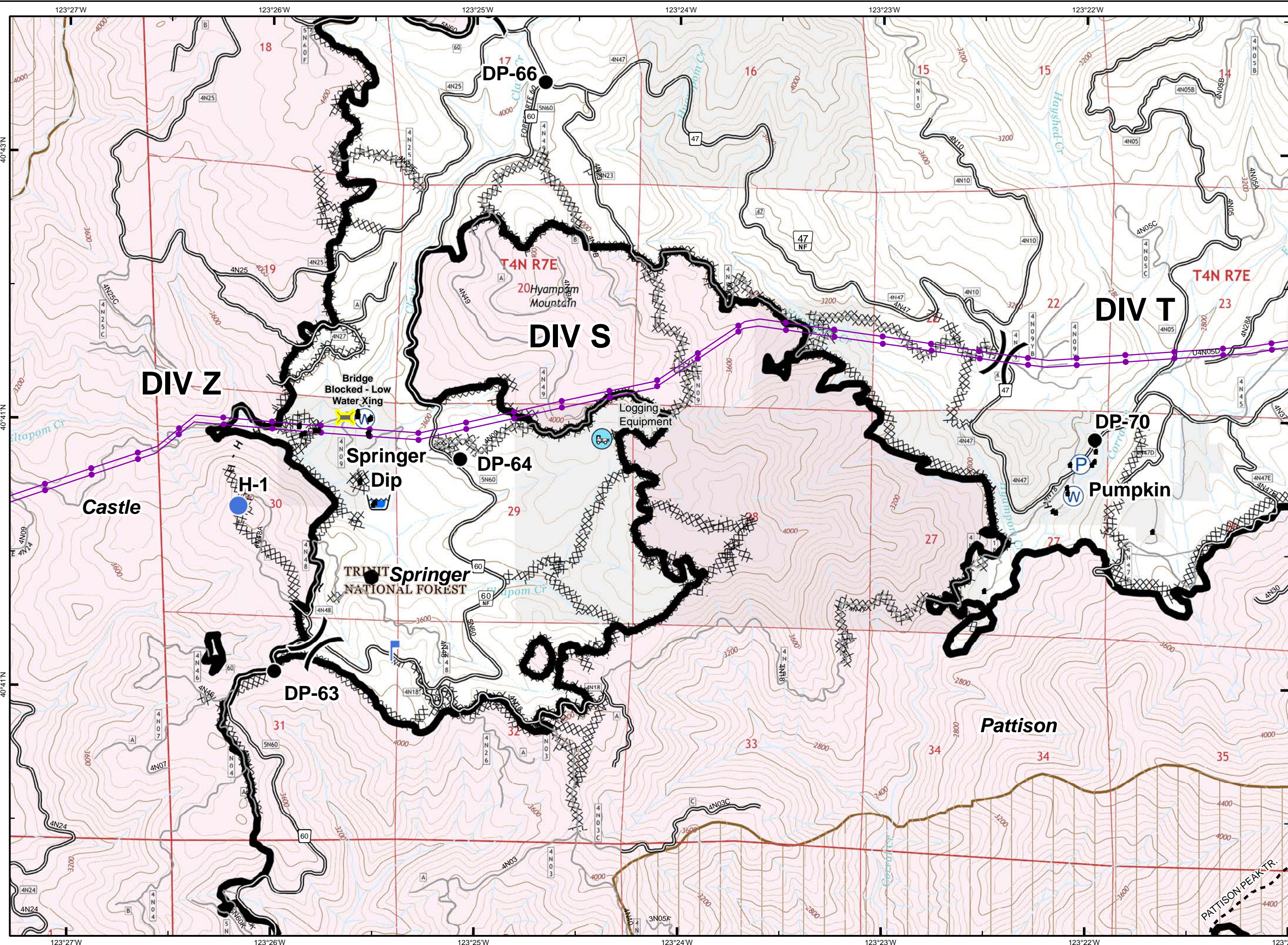
Sept. 1, 2015



- Division Break
- Uncontrolled Fire Edge
- Contained Fire Edge
- H - H - Hand Line
- Completed Dozer Line
- Proposed Dozer Line
- ICP
- Drop Point
- Staging Area
- Repeater
- Helispot
- Dip Site
- Water Source
- Restr. Water Source
- Pump
- Mobile Weather Unit
- Lookout
- Equipment Location
- Nat'l Forest Boundary
- Wilderness
- Wild and Scenic River
- Roadless Area
- Non-USFS Land



1	2	3
4	5	6
8	9	10
	12	13

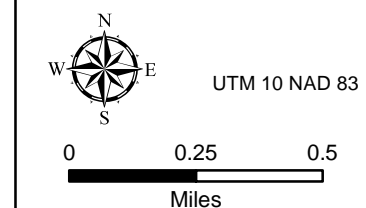


# South Complex CA-SHF-002108

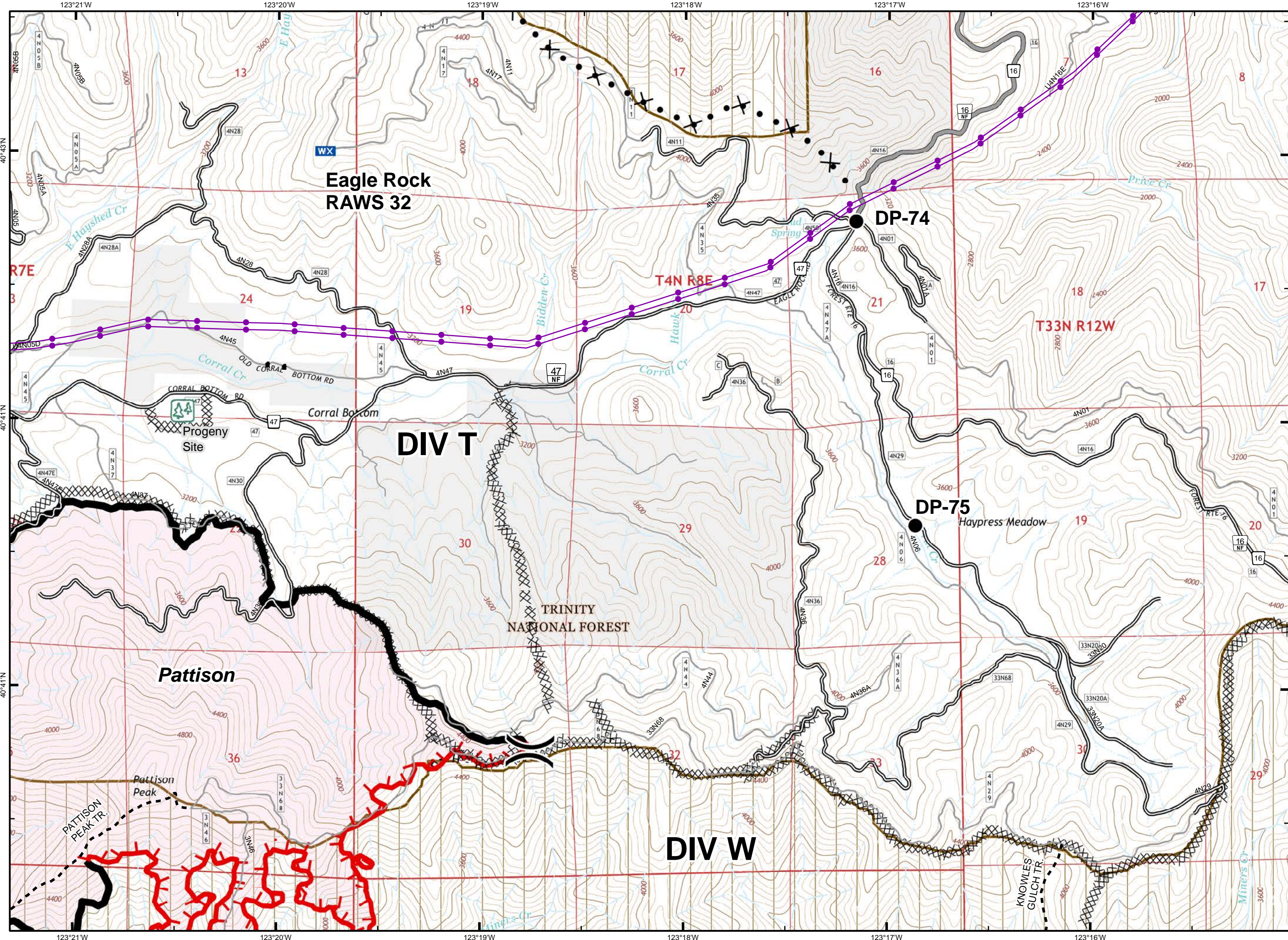
Sept. 1, 2015



- Division Break
- Uncontrolled Fire Edge
- Contained Fire Edge
- Hand Line
- Completed Dozer Line
- Proposed Dozer Line
- ICP
- Drop Point
- Staging Area
- Repeater
- Helispot
- Dip Site
- Water Source
- Restr. Water Source
- Pump
- Mobile Weather Unit
- Lookout
- Equipment Location
- Nat'l Forest Boundary
- Wilderness
- Wild and Scenic River
- Roadless Area
- Non-USFS Land



1	2	3
4	5	6
8	9	10
	12	13



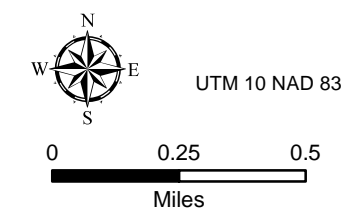


# South Complex CA-SHF-002108

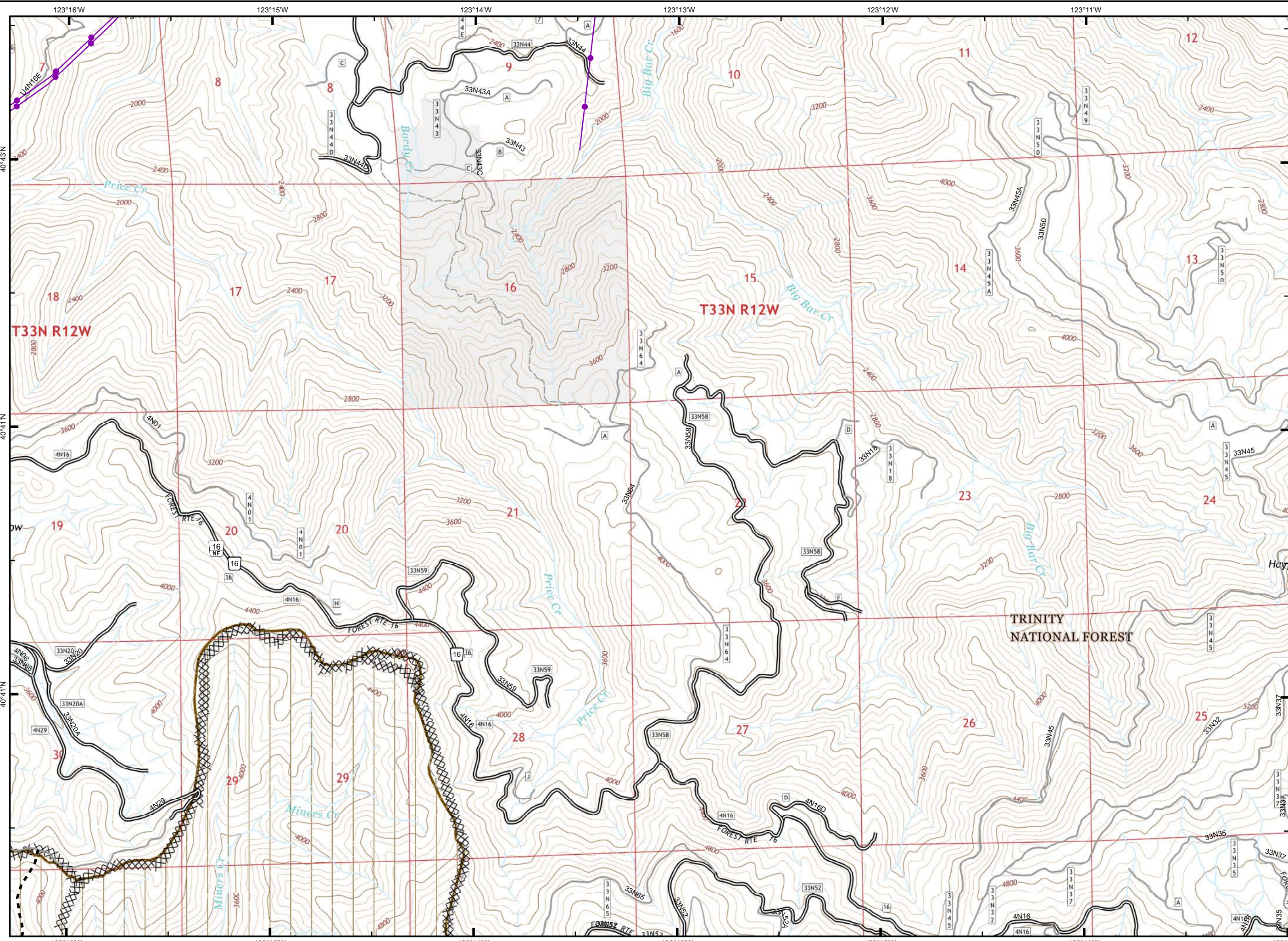
Sept. 1, 2015



- Division Break
- Uncontrolled Fire Edge
- Contained Fire Edge
- H - H - Hand Line
- Completed Dozer Line
- Proposed Dozer Line
- ICP
- Drop Point
- Staging Area
- Repeater
- Helispot
- Dip Site
- Water Source
- Restr. Water Source
- Pump
- Mobile Weather Unit
- Lookout
- Equipment Location
- Nat'l Forest Boundary
- Wilderness
- Wild and Scenic River
- Roadless Area
- Non-USFS Land

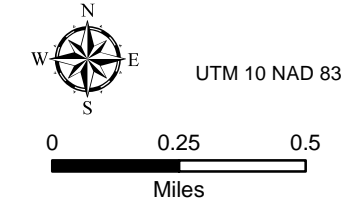


1	2	3	
4	5	6	7
8	9	10	11
	12	13	14

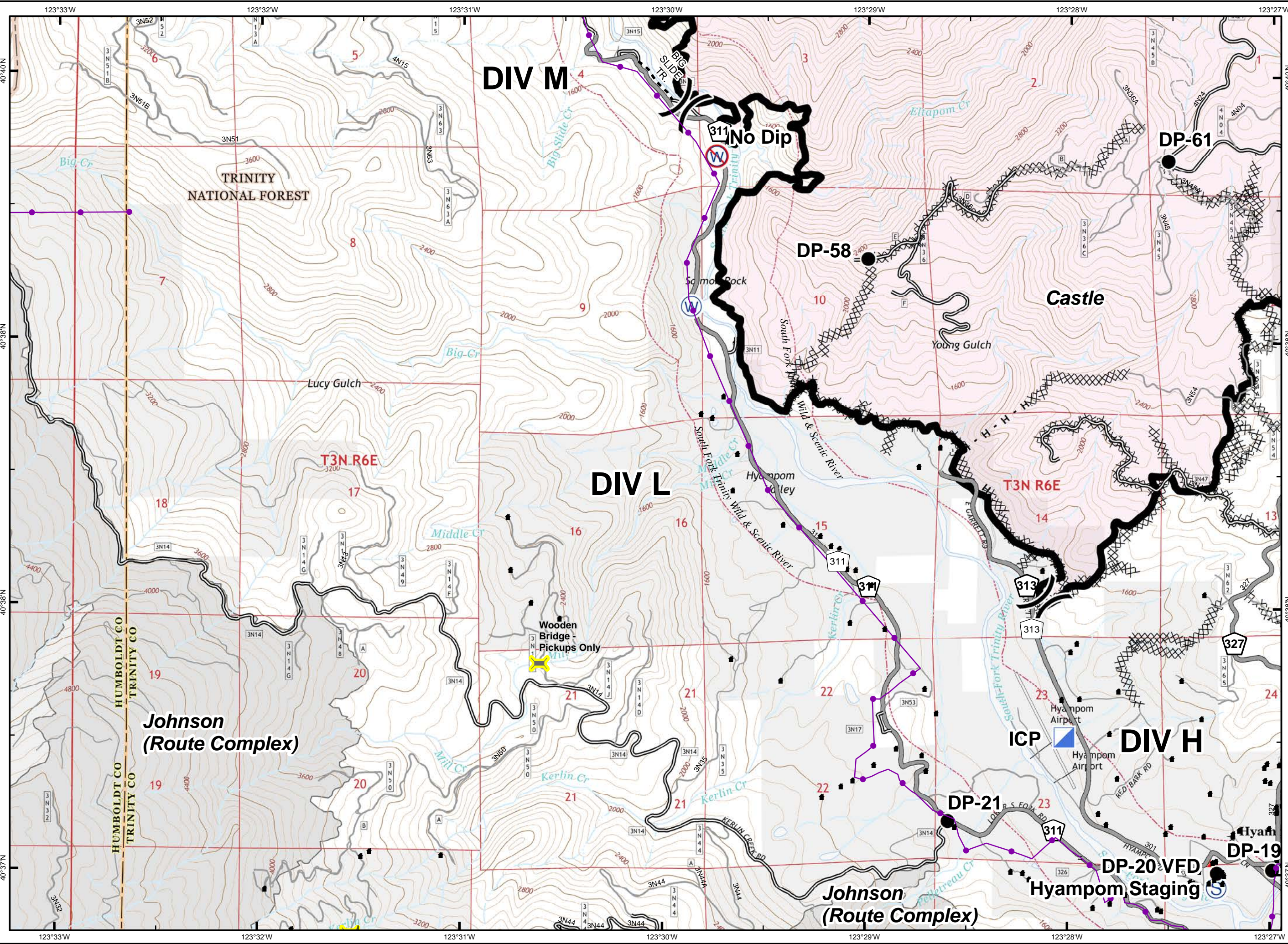




- )) Division Break
- Uncontrolled Fire Edge
- Contained Fire Edge
- H - H - Hand Line
- Completed Dozer Line
- Proposed Dozer Line
- ICP
- Drop Point
- Staging Area
- Repeater
- Helispot
- Dip Site
- Water Source
- Restr. Water Source
- Pump
- Mobile Weather Unit
- Lookout
- Equipment Location
- Nat'l Forest Boundary
- Wilderness
- Wild and Scenic River
- Roadless Area
- Non-USFS Land



1	2	3	
4	5	6	7
8	9	10	11
	12	13	14

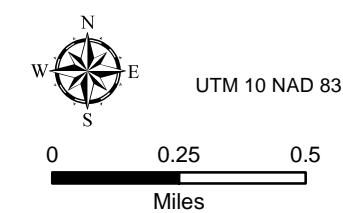


# South Complex CA-SHF-002108

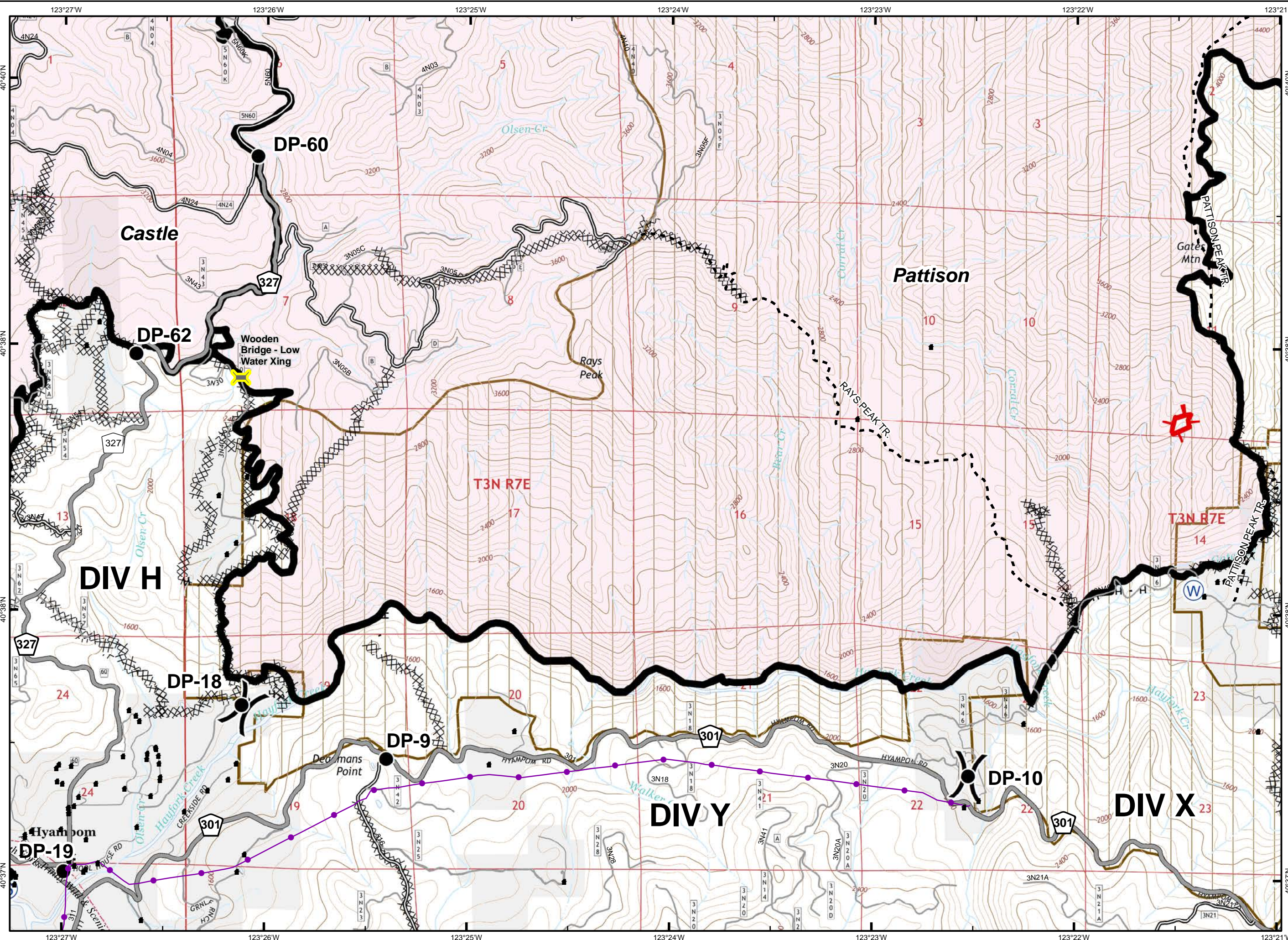
Sept. 1, 2015



- Division Break
- Uncontrolled Fire Edge
- Contained Fire Edge
- Hand Line
- Completed Dozer Line
- Proposed Dozer Line
- ICP
- Drop Point
- Staging Area
- Repeater
- Helispot
- Dip Site
- Water Source
- Restr. Water Source
- Pump
- Mobile Weather Unit
- Lookout
- Equipment Location
- Nat'l Forest Boundary
- Wilderness
- Wild and Scenic River
- Roadless Area
- Non-USFS Land



1	2	3	
4	5	6	7
8	9	10	11
	12	13	14

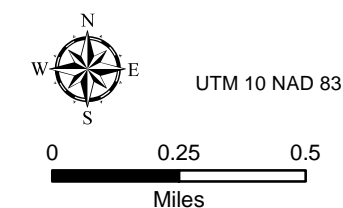


# South Complex CA-SHF-002108

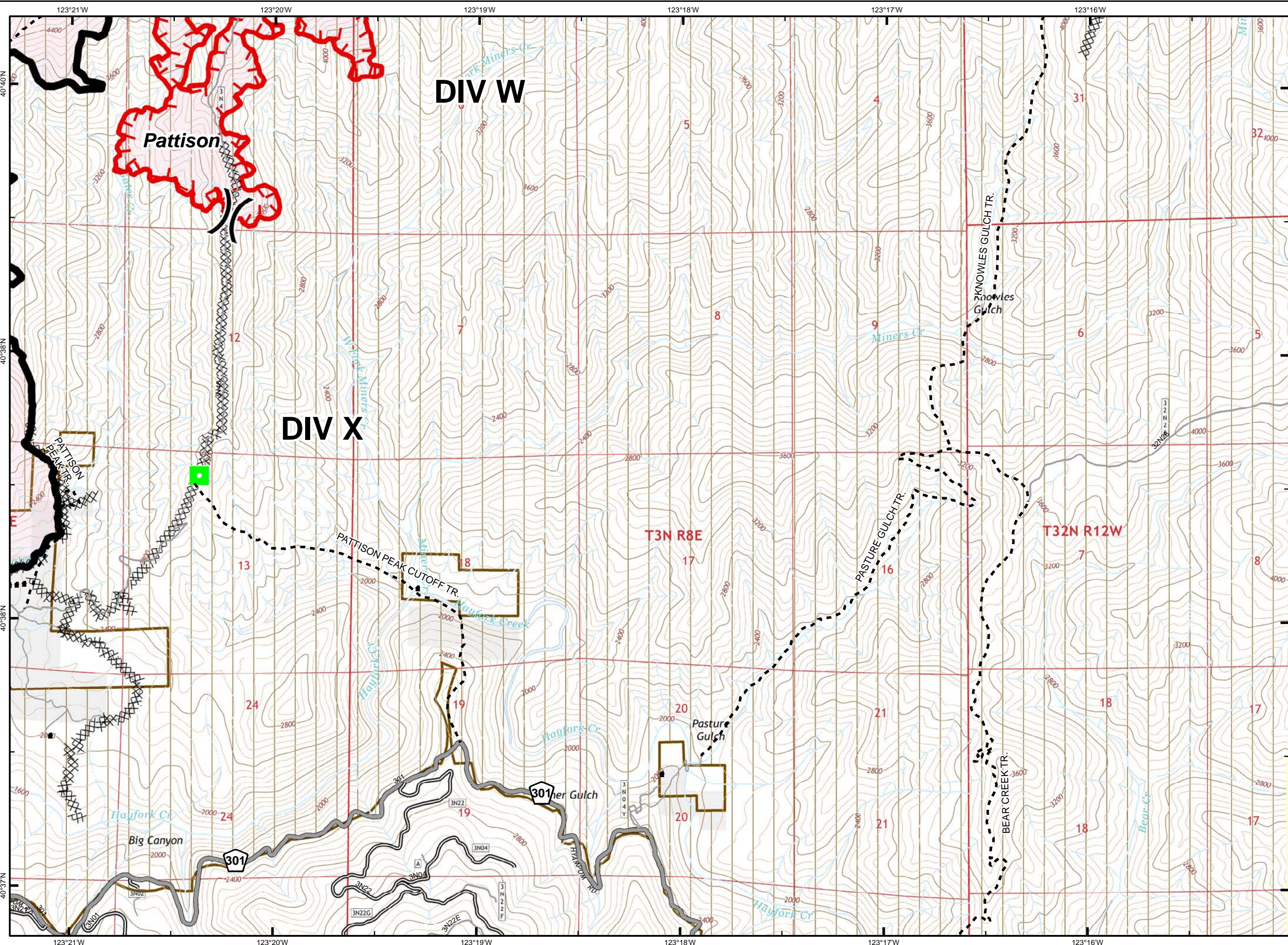
Sept. 1, 2015



- Division Break
- Uncontrolled Fire Edge
- Contained Fire Edge
- H - H - Hand Line
- Completed Dozer Line
- Proposed Dozer Line
- ICP
- Drop Point
- Staging Area
- Repeater
- Helispot
- Dip Site
- Water Source
- Restr. Water Source
- Pump
- Mobile Weather Unit
- Lookout
- Equipment Location
- Nat'l Forest Boundary
- Wilderness
- Wild and Scenic River
- Roadless Area
- Non-USFS Land



1	2	3
4	5	6
8	9	10
	12	13

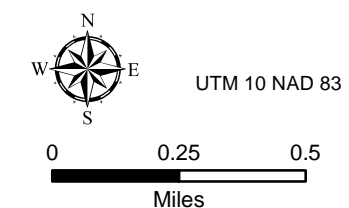


# South Complex CA-SHF-002108

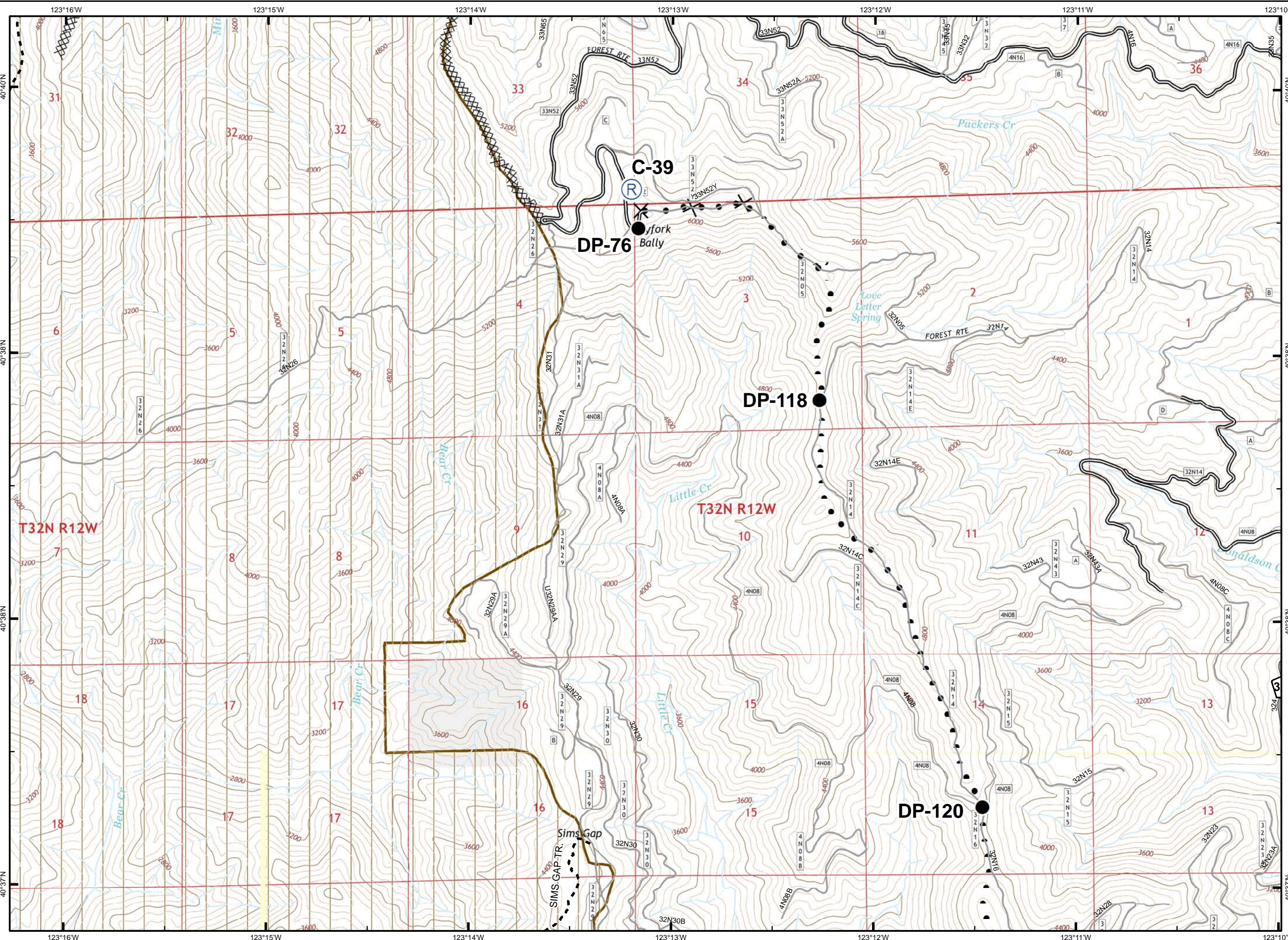
Sept. 1, 2015



- Division Break
- Uncontrolled Fire Edge
- Contained Fire Edge
- Hand Line
- Completed Dozer Line
- Proposed Dozer Line
- ICP
- Drop Point
- Staging Area
- Repeater
- Helispot
- Dip Site
- Water Source
- Restr. Water Source
- Pump
- Mobile Weather Unit
- Lookout
- Equipment Location
- Nat'l Forest Boundary
- Wilderness
- Wild and Scenic River
- Roadless Area
- Non-USFS Land



1	2	3	
4	5	6	7
8	9	10	11
	12	13	14

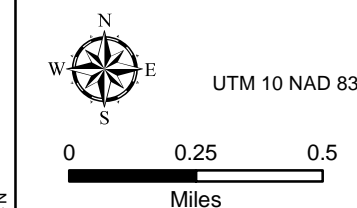


# South Complex CA-SHF-002108

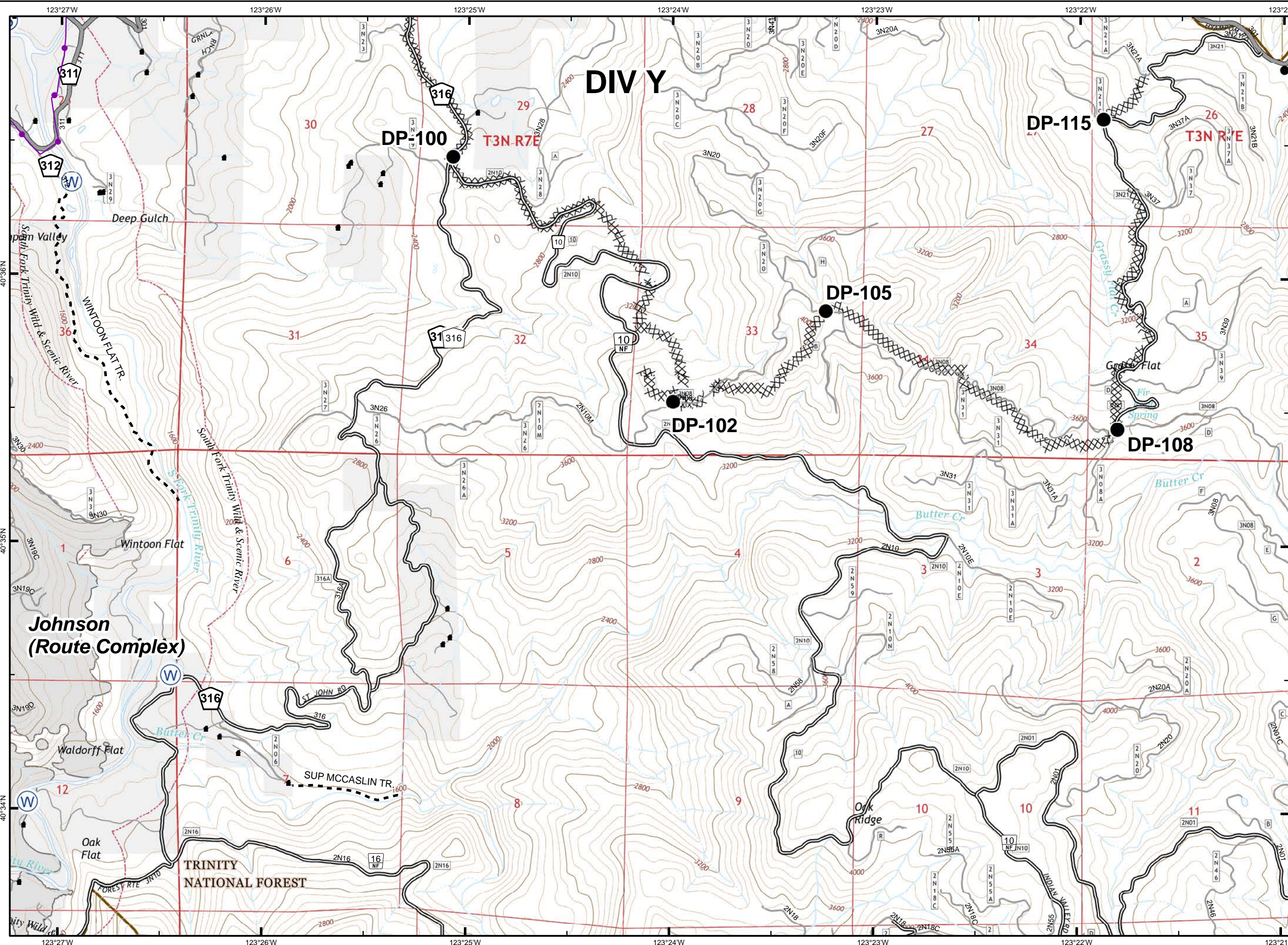
Sept. 1, 2015



- Division Break
- Uncontrolled Fire Edge
- Contained Fire Edge
- Hand Line
- Completed Dozer Line
- Proposed Dozer Line
- ICP
- Drop Point
- Staging Area
- Repeater
- Helispot
- Dip Site
- Water Source
- Restr. Water Source
- Pump
- Mobile Weather Unit
- Lookout
- Equipment Location
- Nat'l Forest Boundary
- Wilderness
- Wild and Scenic River
- Roadless Area
- Non-USFS Land



1	2	3	
4	5	6	7
8	9	10	11
	12	13	14

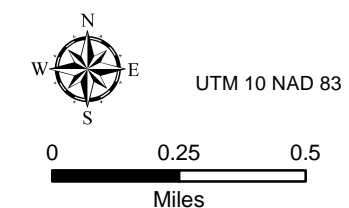


# South Complex CA-SHF-002108

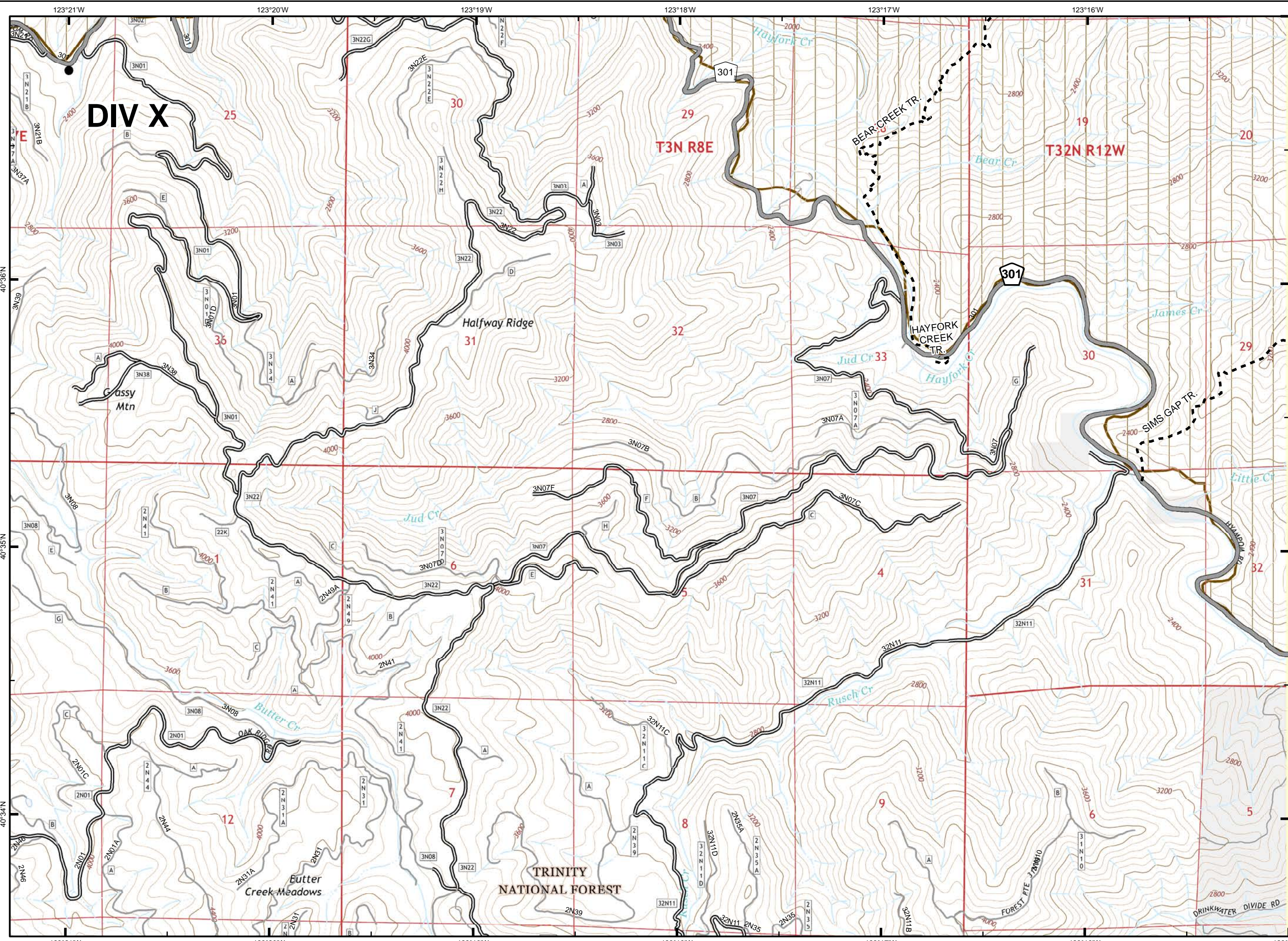
Sept. 1, 2015



- Division Break
- Uncontrolled Fire Edge
- Contained Fire Edge
- H - H - Hand Line
- Completed Dozer Line
- Proposed Dozer Line
- ICP
- Drop Point
- Staging Area
- Repeater
- Helispot
- Dip Site
- Water Source
- Restr. Water Source
- Pump
- Mobile Weather Unit
- Lookout
- Equipment Location
- Nat'l Forest Boundary
- Wilderness
- Wild and Scenic River
- Roadless Area
- Non-USFS Land



1	2	3	
4	5	6	7
8	9	10	11
	12	13	14

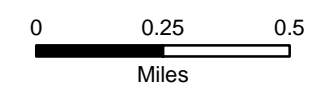
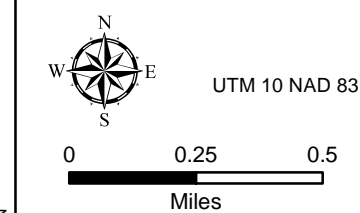


# South Complex CA-SHF-002108

Sept. 1, 2015



- Division Break
- Uncontrolled Fire Edge
- Contained Fire Edge
- Hand Line
- Completed Dozer Line
- Proposed Dozer Line
- ICP
- Drop Point
- Staging Area
- Repeater
- Helispot
- Dip Site
- Water Source
- Restr. Water Source
- Pump
- Mobile Weather Unit
- Lookout
- Equipment Location
- Nat'l Forest Boundary
- Wilderness
- Wild and Scenic River
- Roadless Area
- Non-USFS Land



1	2	3
4	5	6
8	9	10
	12	13
		14

