

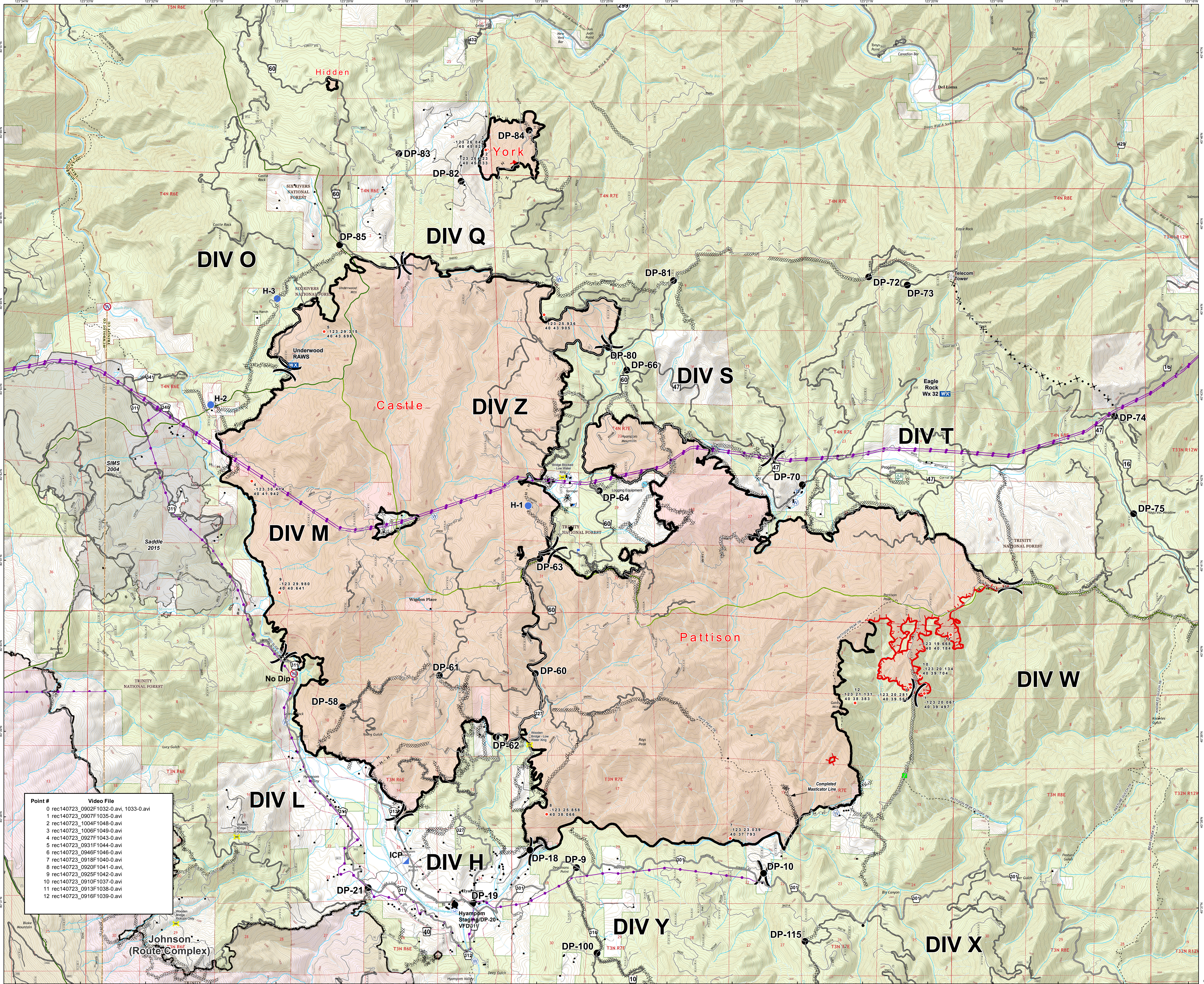
South Complex

SHF-002108

September 1, 2015

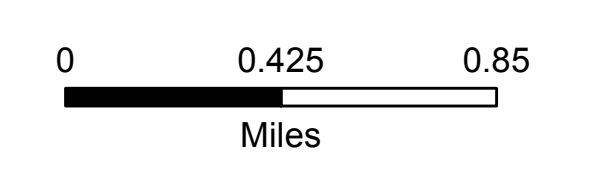
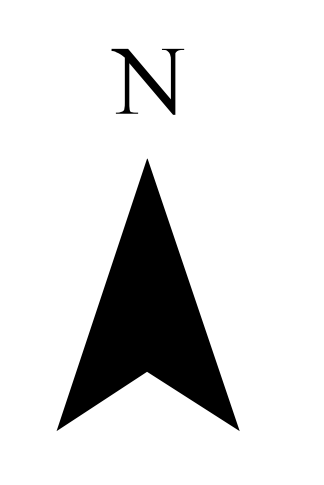
Approximate Acres:
29,377

Operations Map



- Hotspot (Cobra IR flight 8/31)
- ▬ Uncontrolled Fire Edge
- ▬ Completed Dozer Line
- ▬ Completed Line
- ▬ Hand Line
- × × × Proposed Dozer Line
- () Division
- 📍 Dip Site
- Drop Point
- 📍 Helispot
- 📍 Incident Command Post
- 📍 Lookout
- 📍 Mobile Weather Unit
- 📍 Pump
- 📍 Staging Area
- 📍 Water Source
- 📍 Restricted Water Source
- 📍 Equipment Location
- Transmission Line
- Structure
- Wild and Scenic River
- ▭ Forest Boundary
- ▭ Ranger District Boundary

Point #	Video File
0	rec140723_0902F1032-0.avi, 1033-0.avi
1	rec140723_0907F1035-0.avi
2	rec140723_1004F1049-0.avi
3	rec140723_1006F1049-0.avi
4	rec140723_0927F1043-0.avi
5	rec140723_0931F1044-0.avi
6	rec140723_0946F1046-0.avi
7	rec140723_0918F1040-0.avi
8	rec140723_0920F1041-0.avi
9	rec140723_0925F1042-0.avi
10	rec140723_0910F1037-0.avi
11	rec140723_0913F1038-0.avi
12	rec140723_0916F1039-0.avi



Map Datum: NAD 83 UTM Zone 10
910215.230326M
Ops_IR_cobra_irc_bnd_20150802_HMM_SouthComplex_CASHF2108_080508R.mxd