

South Complex CA-SHF-002108

IAP Map Packet

Sept. 2, 2015

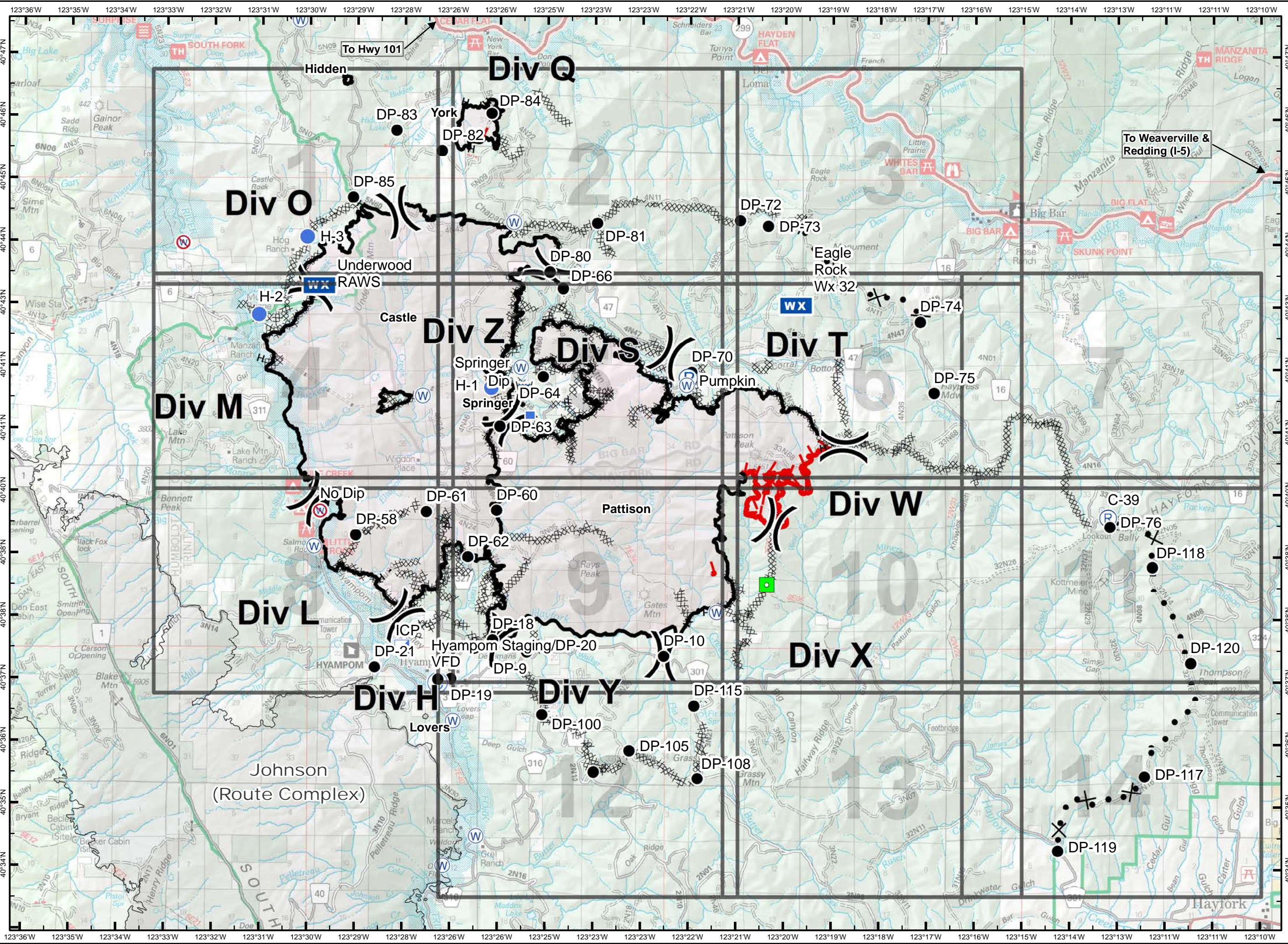


29,377 acres as of
8/31/2015 @ 1800 hrs

- () Division Break
- Uncontrolled Fire Edge
- Contained Fire Edge
- H - H - Hand Line
- Completed Dozer Line
- Proposed Dozer Line
- Incident Command Post
- Drop Point
- Staging Area
- Repeater
- Helispot
- Dip Site
- Water Source
- Restricted Water Source
- Equipment Location






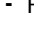













UTM 10 NAD 83
0 0.5 1 2
Miles

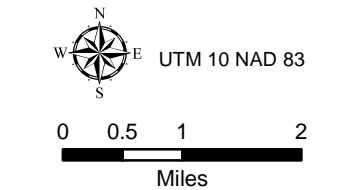


South Complex CA-SHF-002108

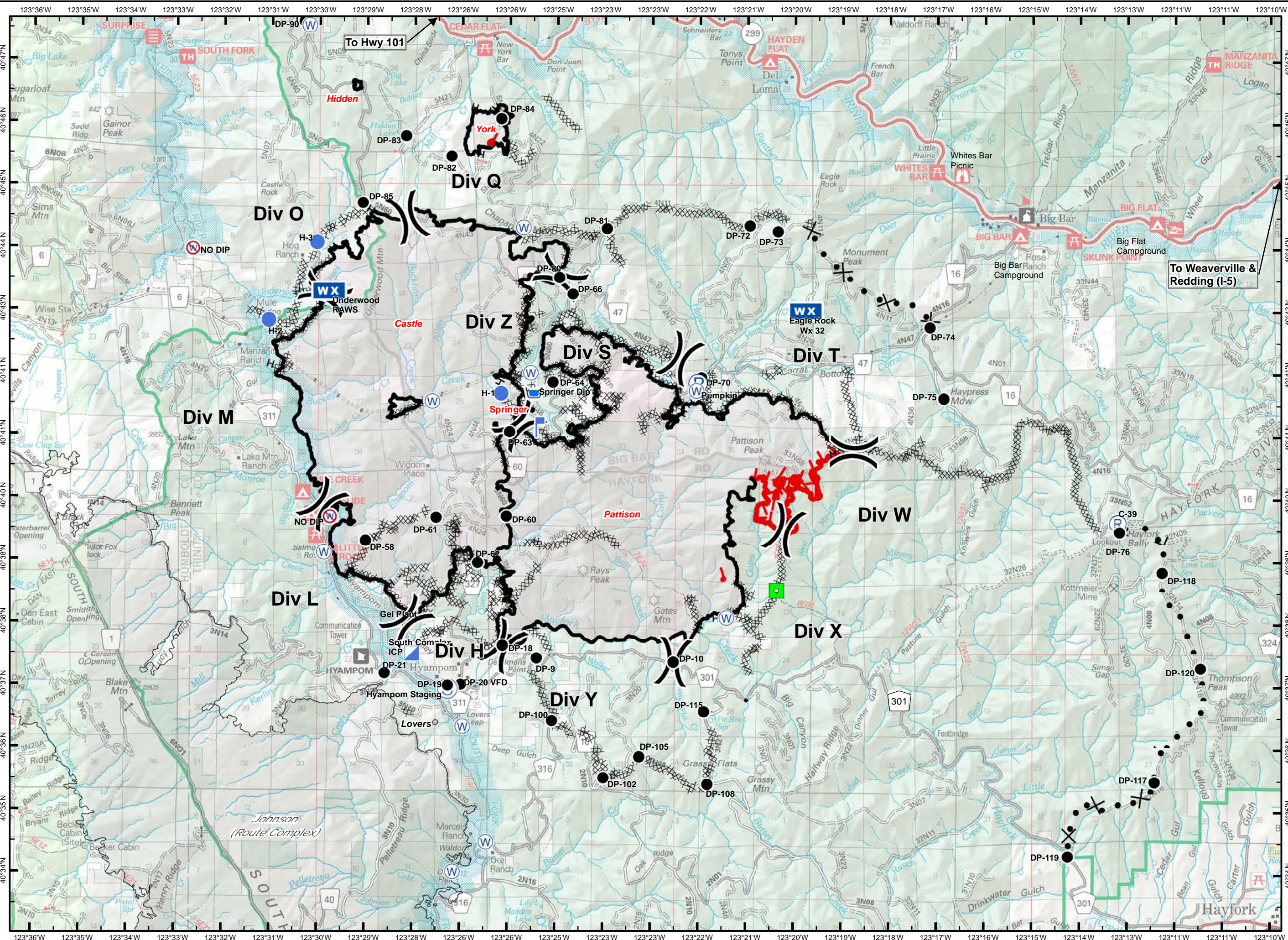
IAP Map Packet Transportation Map

Sept. 2, 2015

-  Division Break
-  Uncontrolled Fire Edge
-  Completed Line
-  Hand Line
-  Completed Dozer Line
-  Proposed Dozer Line
-  Incident Command Post
-  Drop Point
-  Staging Area
-  Repeater
-  Helispot
-  Dip Site
-  Water Source
-  Restricted Water Source
-  Pump
-  Lookout
-  Equipment Location



9/1/2015 10:24:10 PM

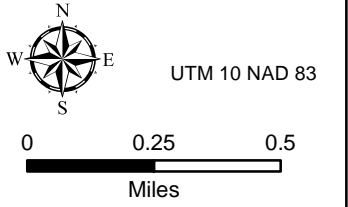


South Complex CA-SHF-002108

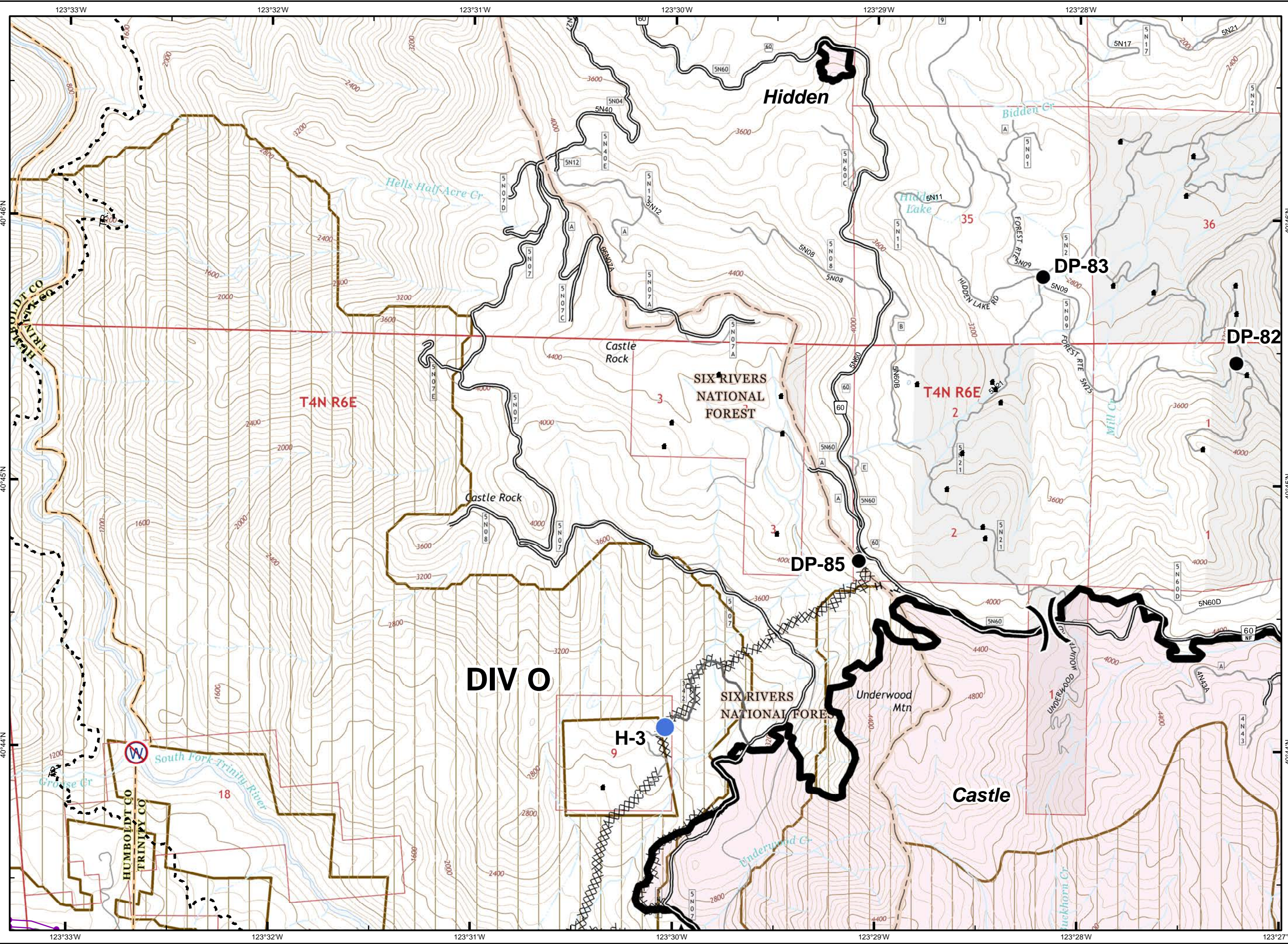
Sept. 2, 2015



- Division Break
- Uncontrolled Fire Edge
- Contained Fire Edge
- Hand Line
- Completed Dozer Line
- Proposed Dozer Line
- ICP
- Drop Point
- Staging Area
- Repeater
- Helispot
- Dip Site
- Water Source
- Restr. Water Source
- Pump
- Mobile Weather Unit
- Lookout
- Equipment Location
- Nat'l Forest Boundary
- Wilderness
- Wild and Scenic River
- Roadless Area
- Non-USFS Land



1	2	3	
4	5	6	7
8	9	10	11
	12	13	14

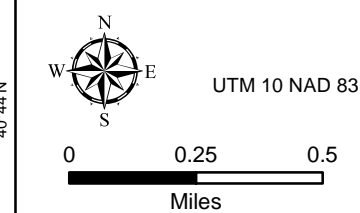


South Complex CA-SHF-002108

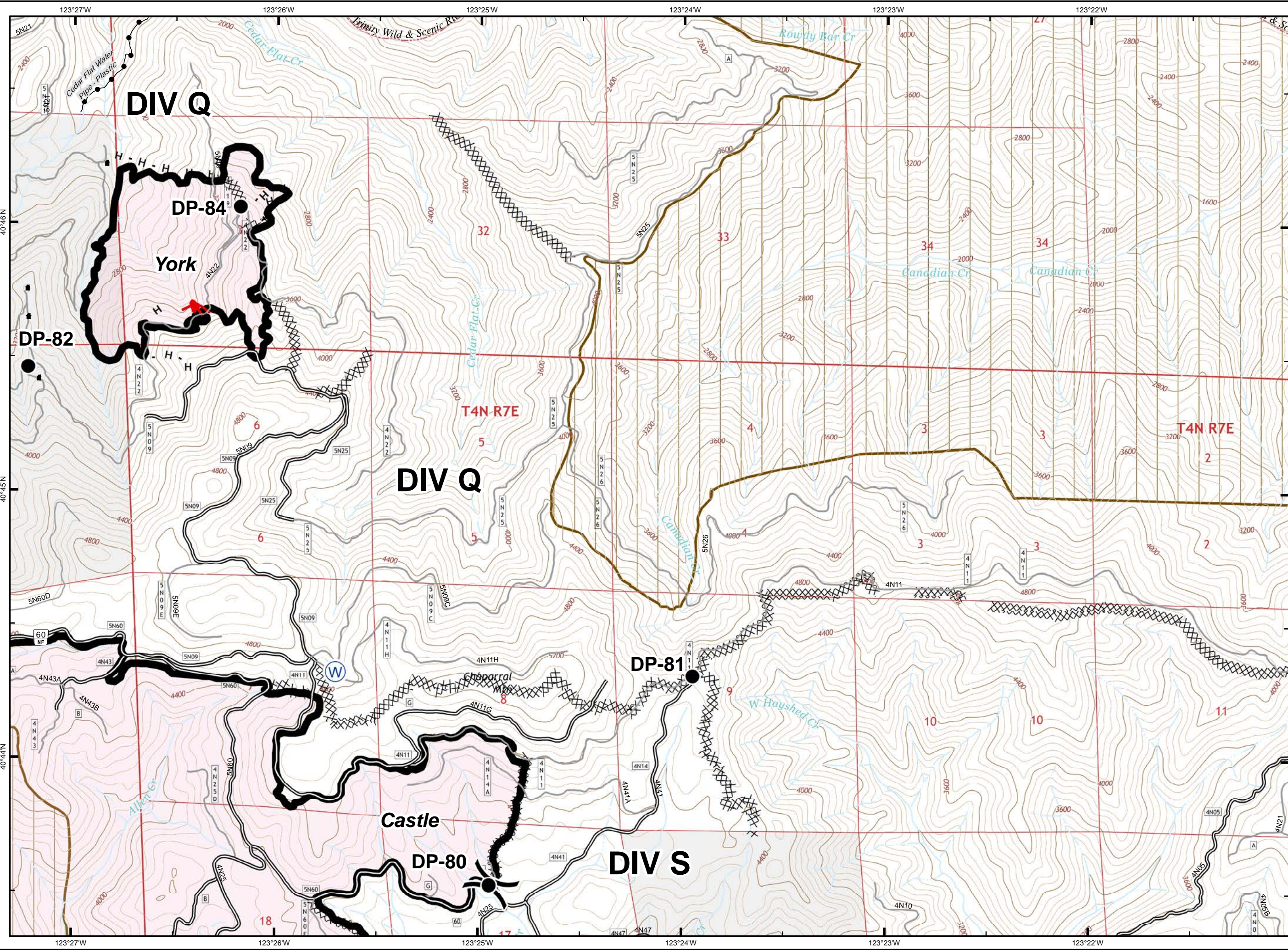
Sept. 2, 2015



- Division Break
- Uncontrolled Fire Edge
- Contained Fire Edge
- Hand Line
- Completed Dozer Line
- Proposed Dozer Line
- ICP
- Drop Point
- Staging Area
- Repeater
- Helispot
- Dip Site
- Water Source
- Restr. Water Source
- Pump
- Mobile Weather Unit
- Lookout
- Equipment Location
- Nat'l Forest Boundary
- Wilderness
- Wild and Scenic River
- Roadless Area
- Non-USFS Land



1	2	3	
4	5	6	7
8	9	10	11
	12	13	14

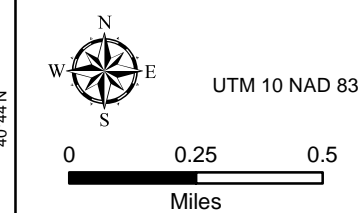


South Complex CA-SHF-002108

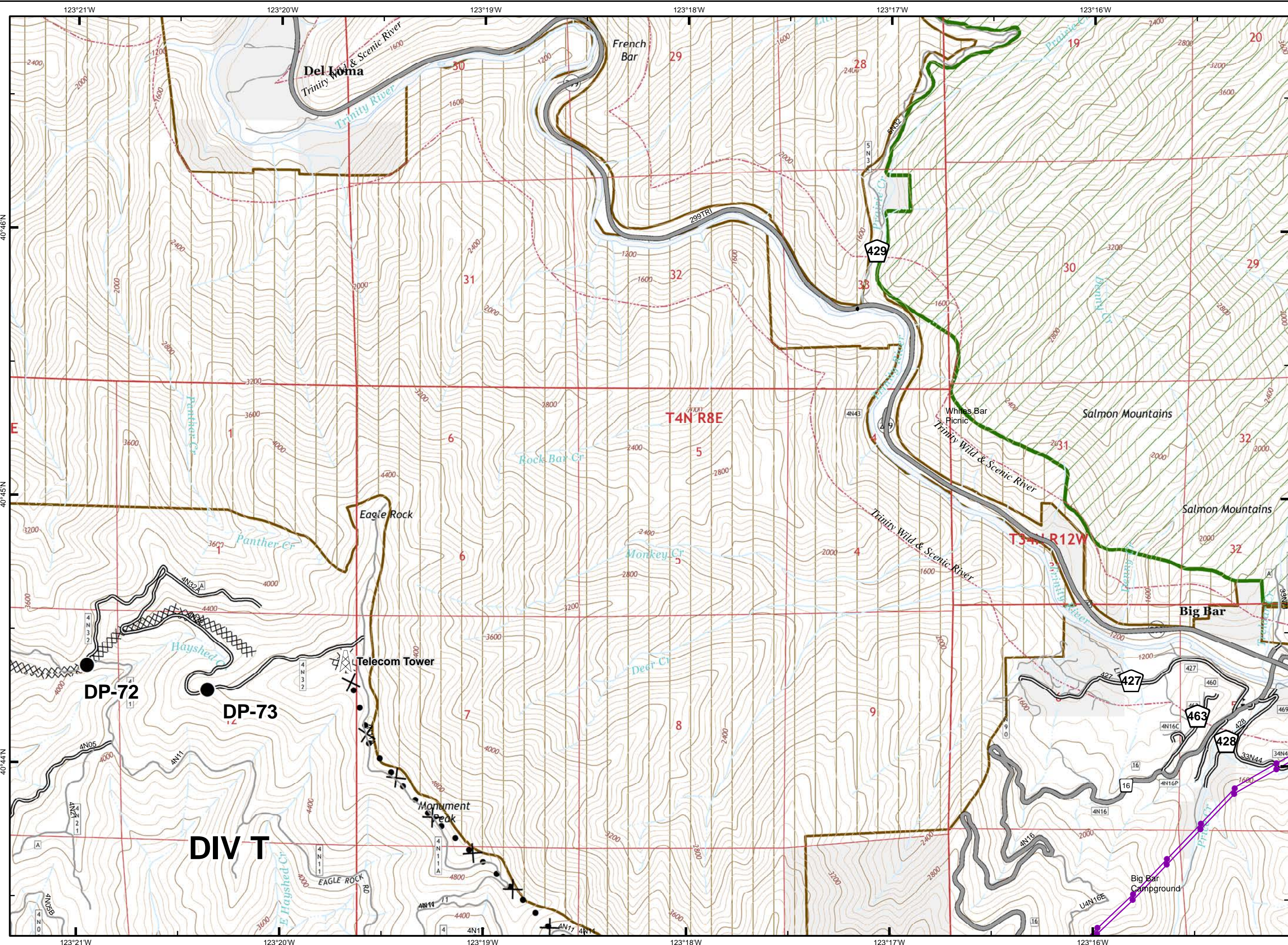
Sept. 2, 2015



- Division Break
- Uncontrolled Fire Edge
- Contained Fire Edge
- Hand Line
- Completed Dozer Line
- Proposed Dozer Line
- ICP
- Drop Point
- Staging Area
- Repeater
- Helispot
- Dip Site
- Water Source
- Restr. Water Source
- Pump
- Mobile Weather Unit
- Lookout
- Equipment Location
- Nat'l Forest Boundary
- Wilderness
- Wild and Scenic River
- Roadless Area
- Non-USFS Land



1	2	3
4	5	6
8	9	10
	12	13

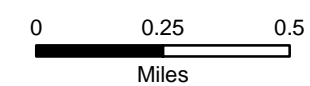
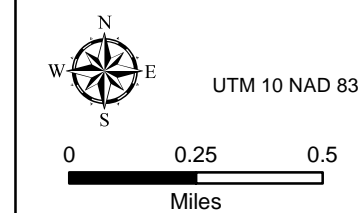


South Complex CA-SHF-002108

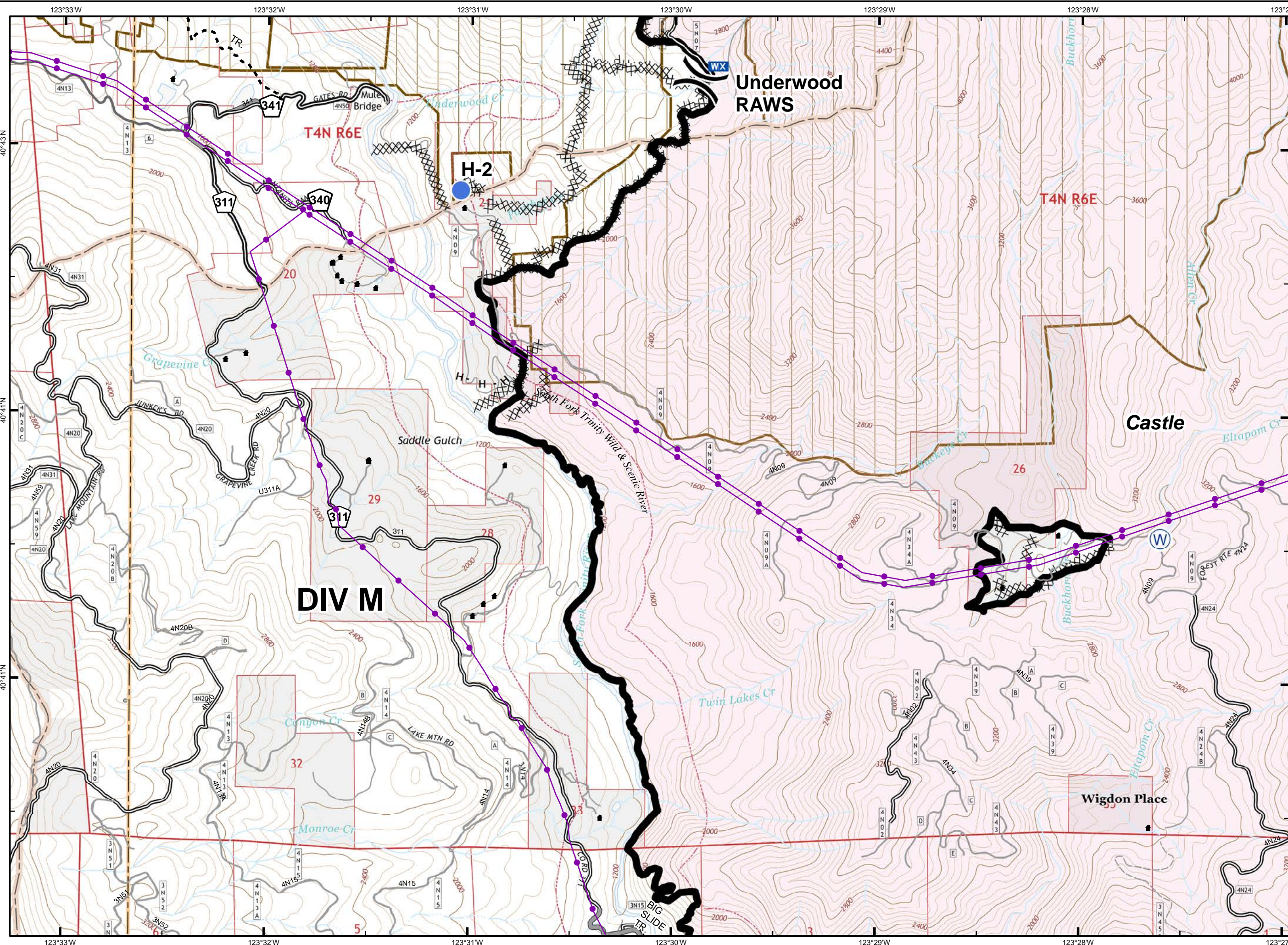
Sept. 2, 2015



- Division Break
- Uncontrolled Fire Edge
- Contained Fire Edge
- H - H - Hand Line
- Completed Dozer Line
- Proposed Dozer Line
- ICP
- Drop Point
- Staging Area
- Repeater
- Helispot
- Dip Site
- Water Source
- Restr. Water Source
- Pump
- Mobile Weather Unit
- Lookout
- Equipment Location
- Nat'l Forest Boundary
- Wilderness
- Wild and Scenic River
- Roadless Area
- Non-USFS Land



1	2	3	
4	5	6	7
8	9	10	11
	12	13	14

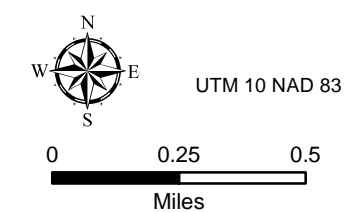


South Complex CA-SHF-002108

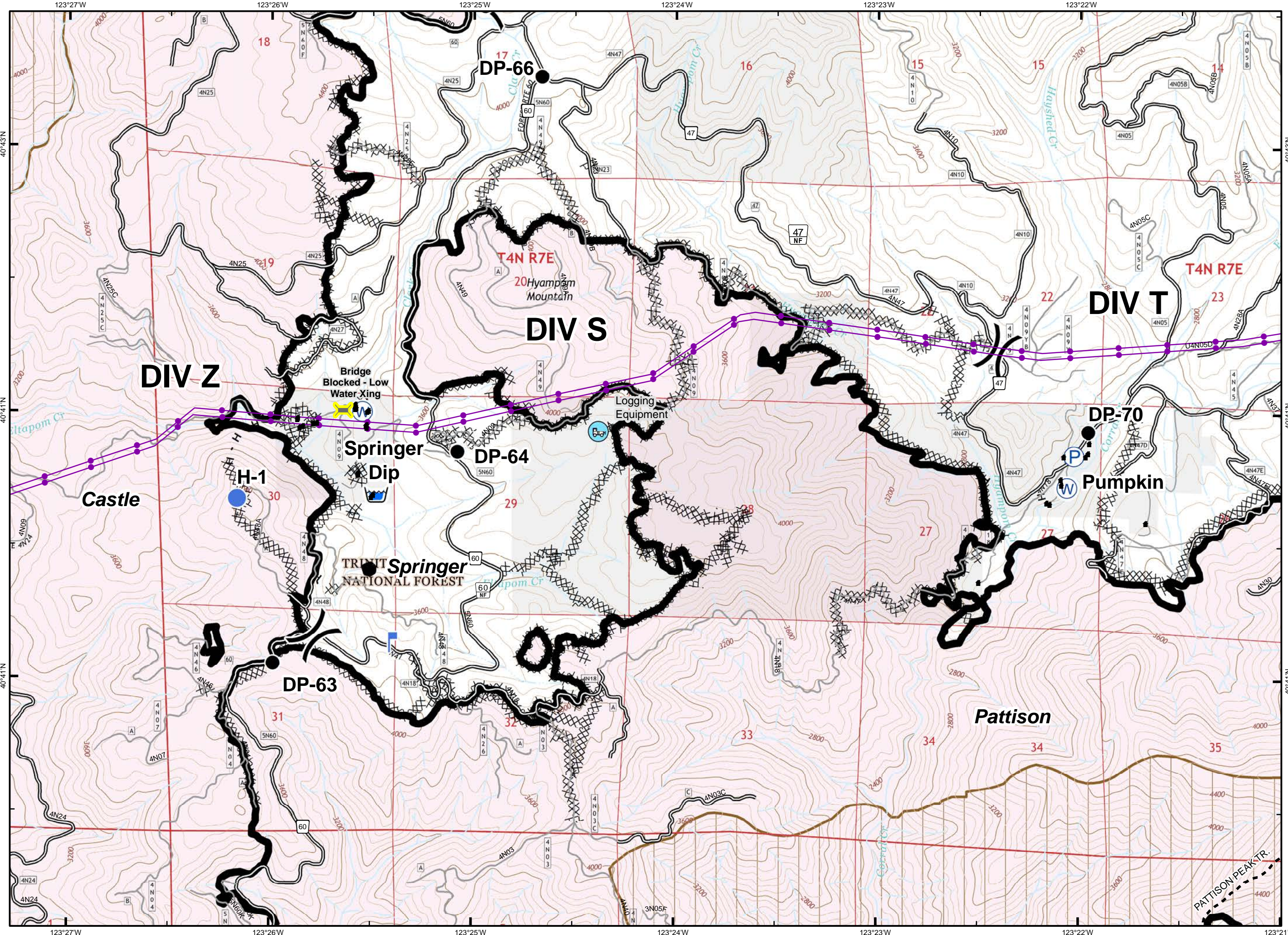
Sept. 2, 2015



- Division Break
- Uncontrolled Fire Edge
- Contained Fire Edge
- H - H - Hand Line
- Completed Dozer Line
- Proposed Dozer Line
- ICP
- Drop Point
- Staging Area
- Repeater
- Helispot
- Dip Site
- Water Source
- Restr. Water Source
- Pump
- Mobile Weather Unit
- Lookout
- Equipment Location
- Nat'l Forest Boundary
- Wilderness
- Wild and Scenic River
- Roadless Area
- Non-USFS Land



1	2	3
4	5	6
8	9	10
	12	13
		14

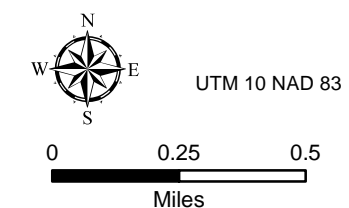


South Complex CA-SHF-002108

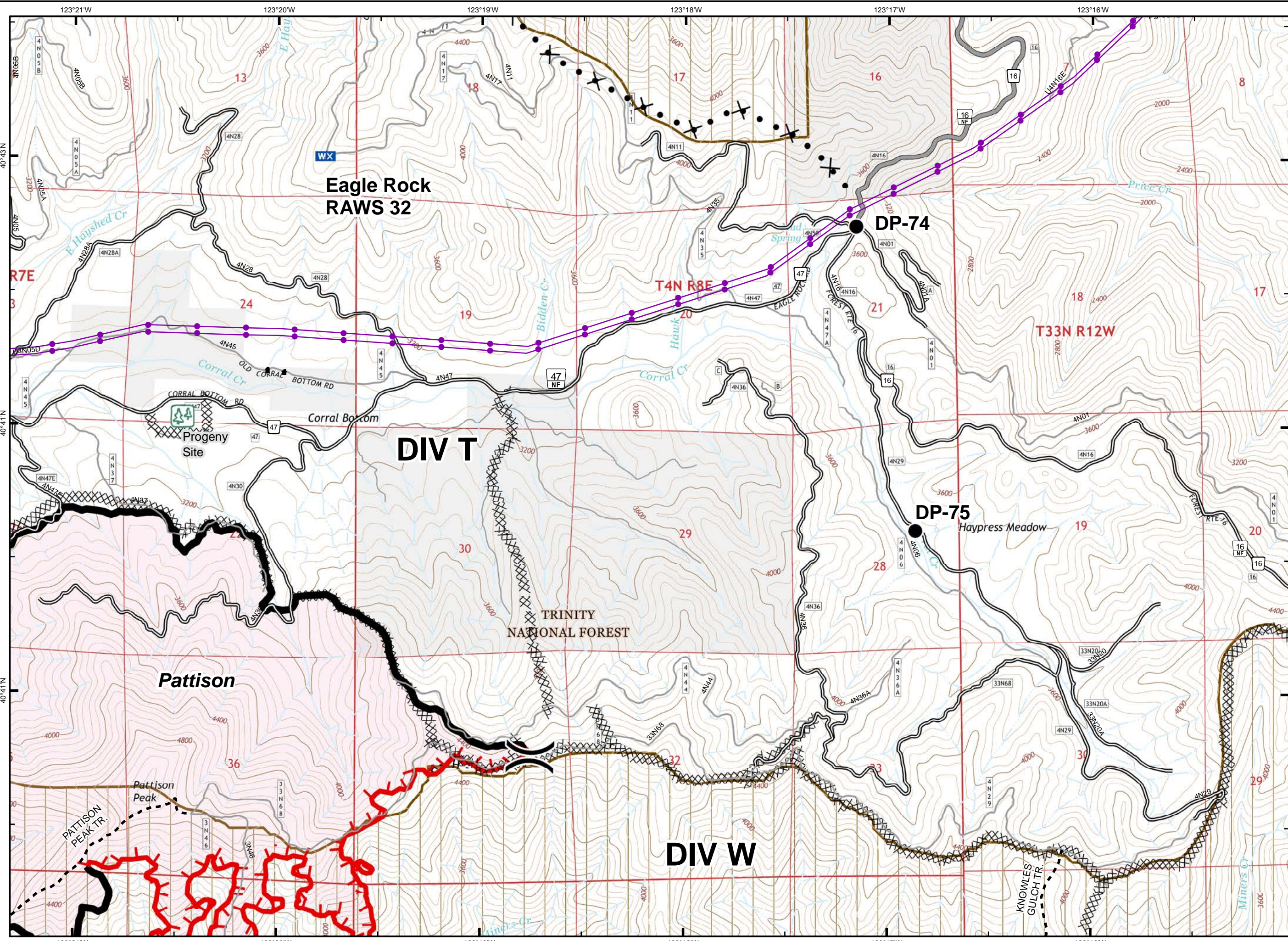
Sept. 2, 2015



- Division Break
- Uncontrolled Fire Edge
- Contained Fire Edge
- Hand Line
- Completed Dozer Line
- Proposed Dozer Line
- ICP
- Drop Point
- Staging Area
- Repeater
- Helispot
- Dip Site
- Water Source
- Restr. Water Source
- Pump
- Mobile Weather Unit
- Lookout
- Equipment Location
- Nat'l Forest Boundary
- Wilderness
- Wild and Scenic River
- Roadless Area
- Non-USFS Land



1	2	3
4	5	6
8	9	10
	12	13
		14

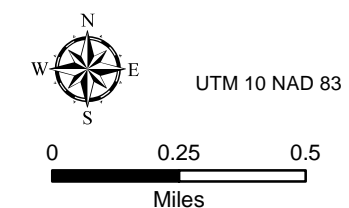


South Complex CA-SHF-002108

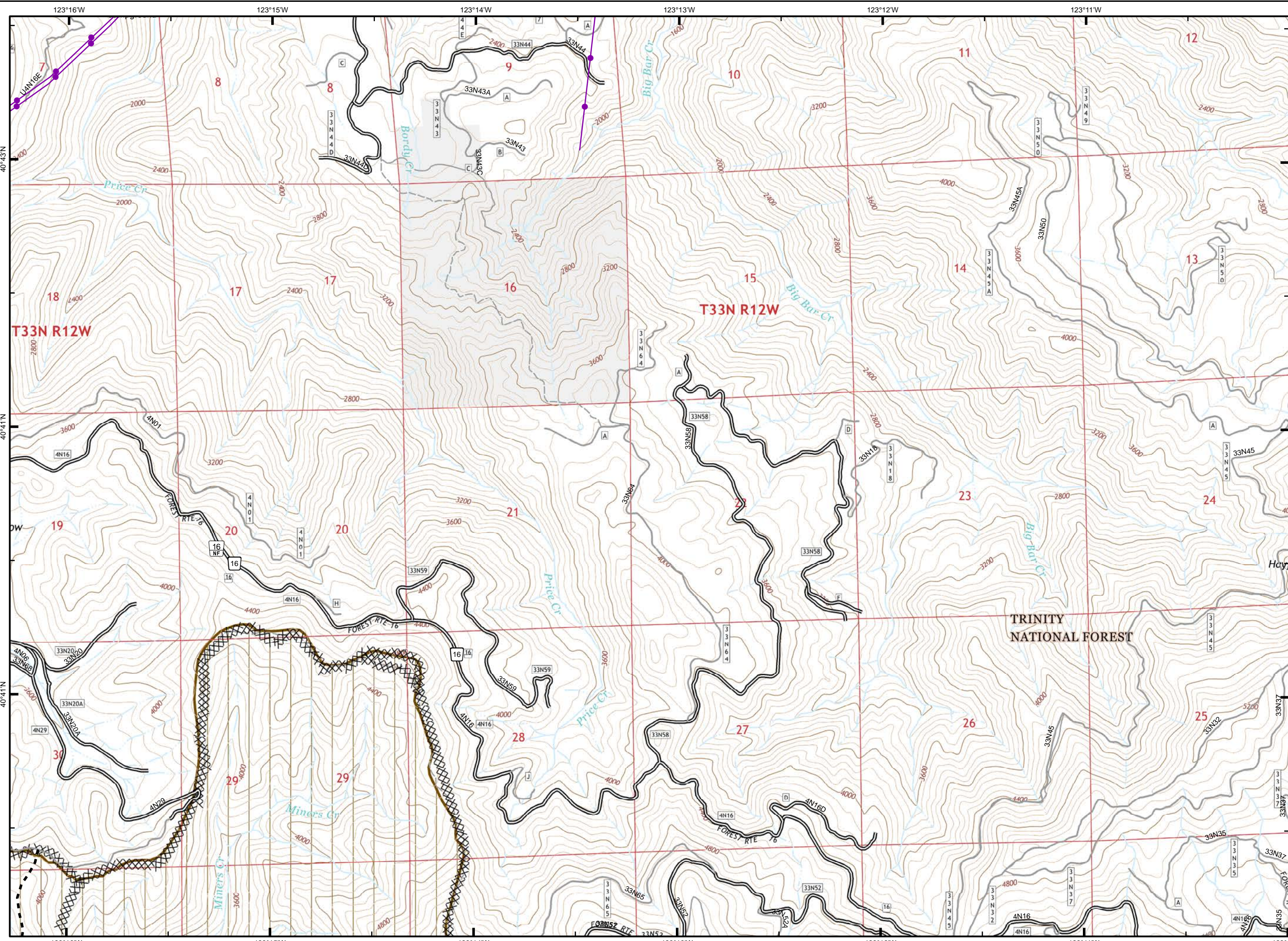
Sept. 2, 2015



- Division Break
- Uncontrolled Fire Edge
- Contained Fire Edge
- H - H - Hand Line
- Completed Dozer Line
- Proposed Dozer Line
- ICP
- Drop Point
- Staging Area
- Repeater
- Helispot
- Dip Site
- Water Source
- Restr. Water Source
- Pump
- Mobile Weather Unit
- Lookout
- Equipment Location
- Nat'l Forest Boundary
- Wilderness
- Wild and Scenic River
- Roadless Area
- Non-USFS Land

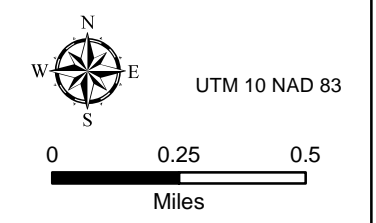


1	2	3	
4	5	6	7
8	9	10	11
	12	13	14

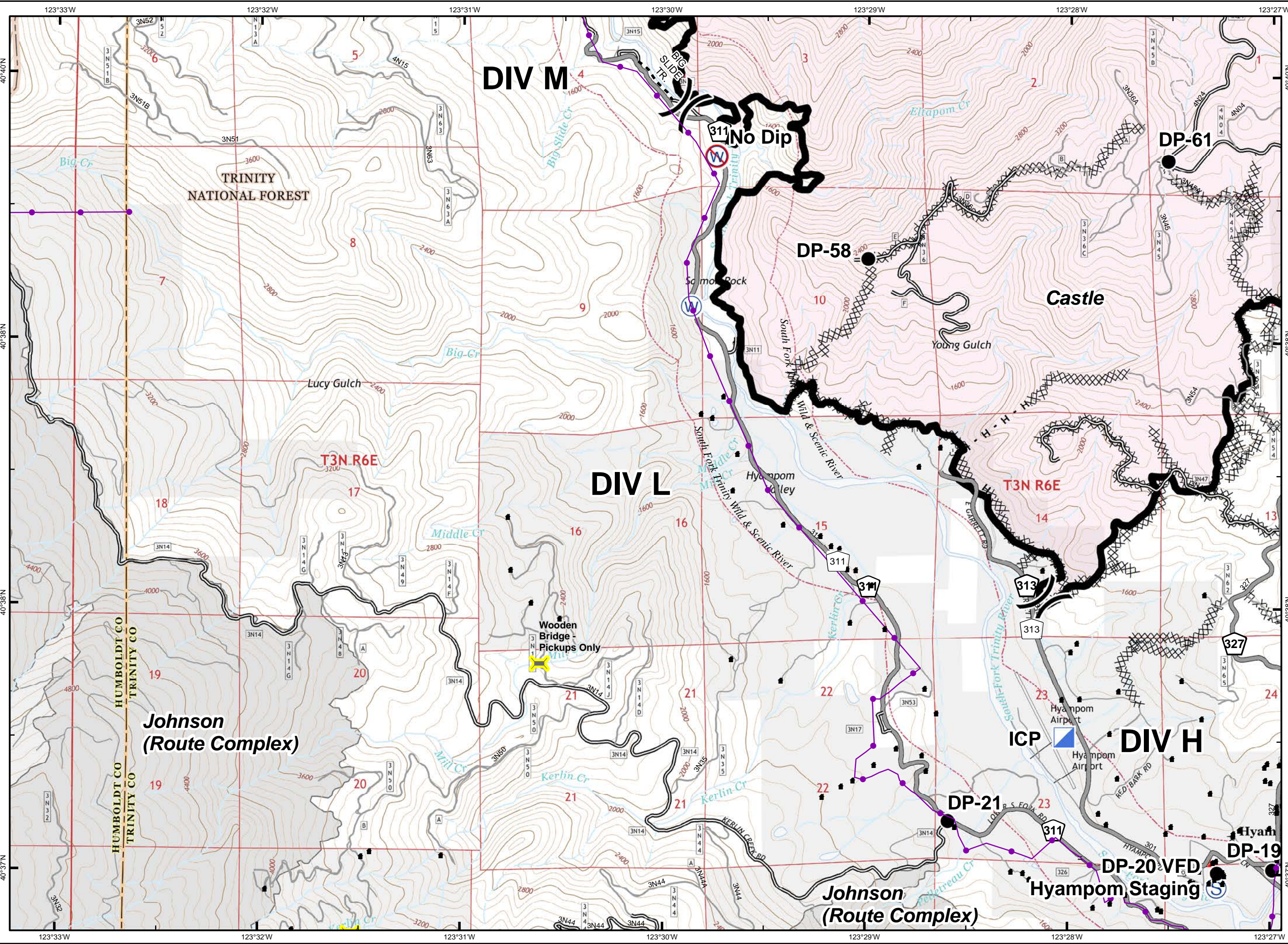




- Division Break
- Uncontrolled Fire Edge
- Contained Fire Edge
- Hand Line
- Completed Dozer Line
- Proposed Dozer Line
- ICP
- Drop Point
- Staging Area
- Repeater
- Helispot
- Dip Site
- Water Source
- Restr. Water Source
- Pump
- Mobile Weather Unit
- Lookout
- Equipment Location
- Nat'l Forest Boundary
- Wilderness
- Wild and Scenic River
- Roadless Area
- Non-USFS Land



1	2	3	
4	5	6	7
8	9	10	11
	12	13	14

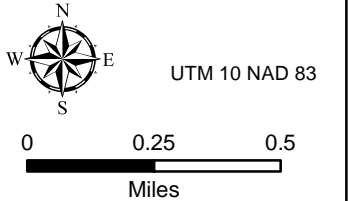


South Complex CA-SHF-002108

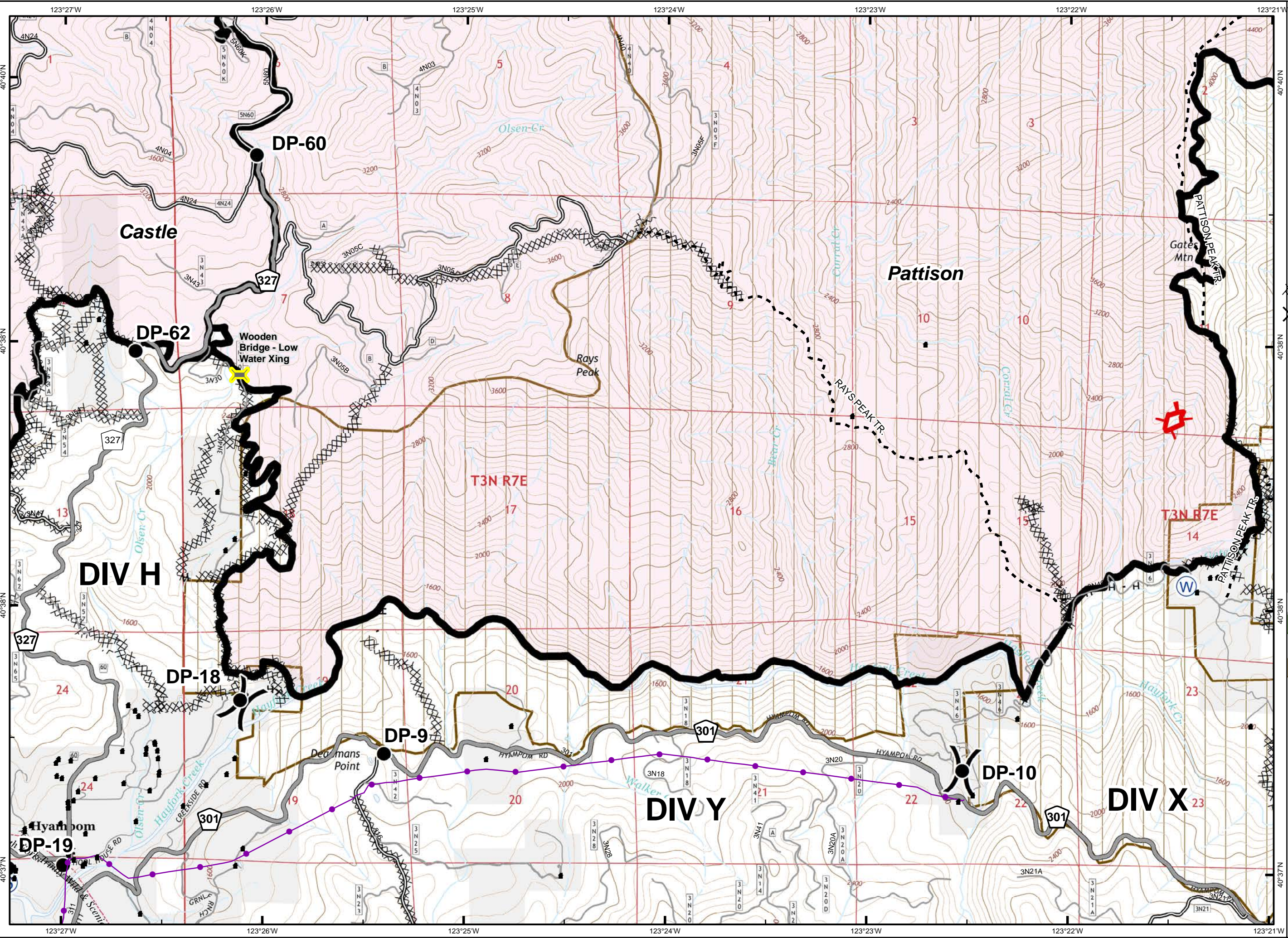
Sept. 2, 2015



- Division Break
- Uncontrolled Fire Edge
- Contained Fire Edge
- Hand Line
- Completed Dozer Line
- Proposed Dozer Line
- ICP
- Drop Point
- Staging Area
- Repeater
- Helispot
- Dip Site
- Water Source
- Restr. Water Source
- Pump
- Mobile Weather Unit
- Lookout
- Equipment Location
- Nat'l Forest Boundary
- Wilderness
- Wild and Scenic River
- Roadless Area
- Non-USFS Land



1	2	3	
4	5	6	7
8	9	10	11
	12	13	14

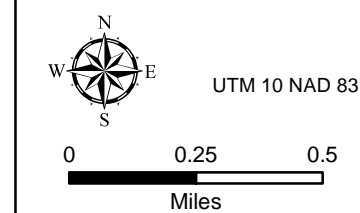


South Complex CA-SHF-002108

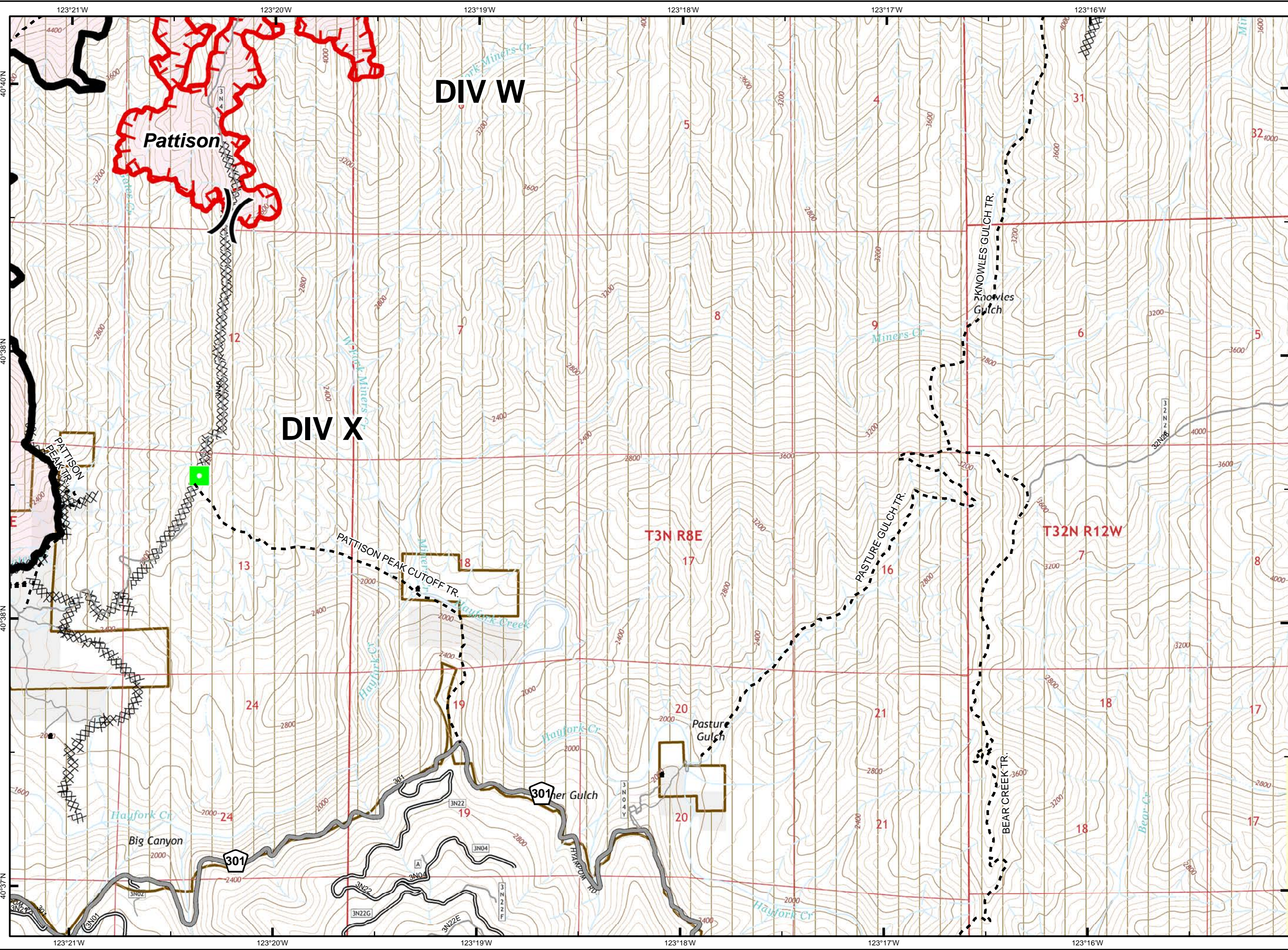
Sept. 2, 2015



- Division Break
- Uncontrolled Fire Edge
- Contained Fire Edge
- H - H - Hand Line
- Completed Dozer Line
- Proposed Dozer Line
- ICP
- Drop Point
- Staging Area
- Repeater
- Helispot
- Dip Site
- Water Source
- Restr. Water Source
- Pump
- Mobile Weather Unit
- Lookout
- Equipment Location
- Nat'l Forest Boundary
- Wilderness
- Wild and Scenic River
- Roadless Area
- Non-USFS Land



1	2	3
4	5	6
8	9	10
	12	13



DIV W

DIV X

Pattison

T3N R8E

T32N R12W

301

301

Big Canyon

Pasture Gulch

BEAR CREEK TR.

KNOWLES GULCH TR.

PATTISON PEAK CUTOFF TR.

PATTISON PEAK TR.

301

301

301

301

301

301

301

301

301

301

301

301

301

301

301

301

301

301

301

301

301

301

301

301

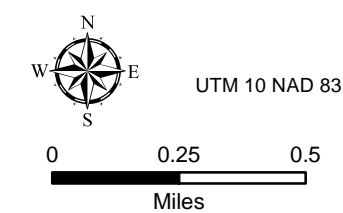
301

South Complex CA-SHF-002108

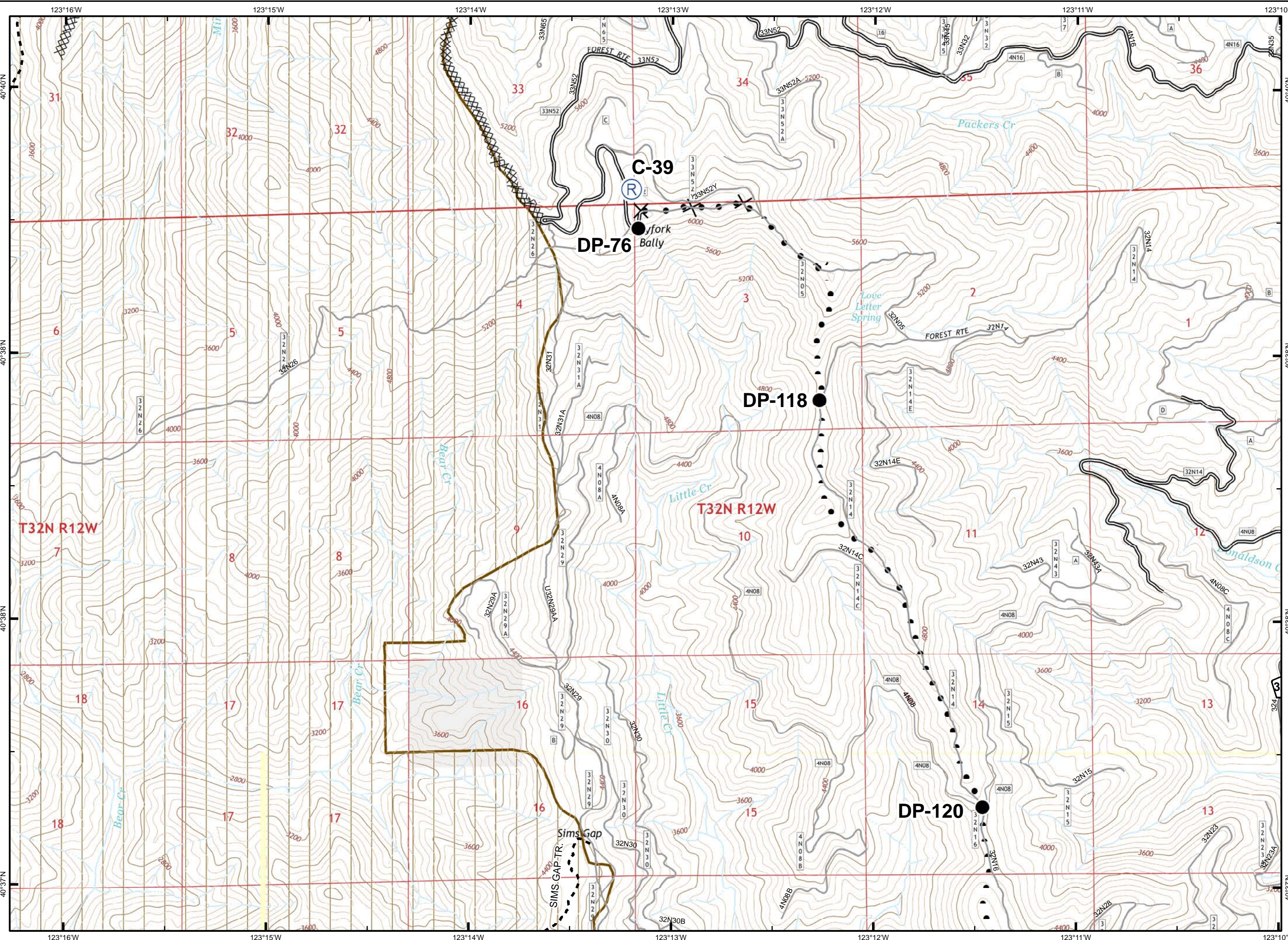
Sept. 2, 2015



- Division Break
- Uncontrolled Fire Edge
- Contained Fire Edge
- Hand Line
- Completed Dozer Line
- Proposed Dozer Line
- ICP
- Drop Point
- Staging Area
- Repeater
- Helispot
- Dip Site
- Water Source
- Restr. Water Source
- Pump
- Mobile Weather Unit
- Lookout
- Equipment Location
- Nat'l Forest Boundary
- Wilderness
- Wild and Scenic River
- Roadless Area
- Non-USFS Land



1	2	3
4	5	6
8	9	10
	12	13



123°16'W 123°15'W 123°14'W 123°13'W 123°12'W 123°11'W 123°10'W

40°40'N 40°38'N 40°37'N

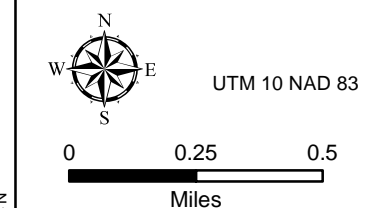
123°16'W 123°15'W 123°14'W 123°13'W 123°12'W 123°11'W 123°10'W

South Complex CA-SHF-002108

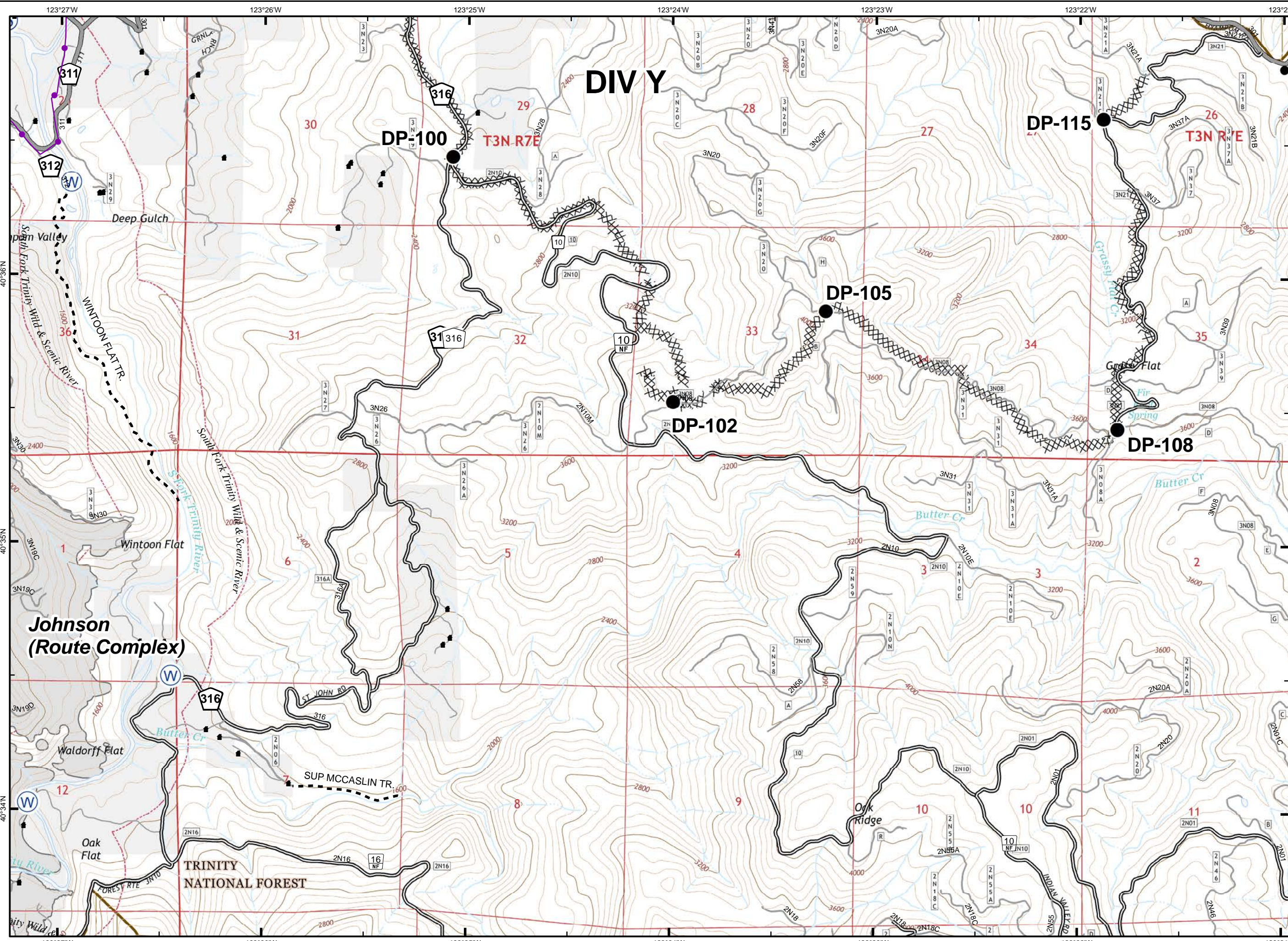
Sept. 2, 2015



- Division Break
- Uncontrolled Fire Edge
- Contained Fire Edge
- H - H - Hand Line
- Completed Dozer Line
- Proposed Dozer Line
- ICP
- Drop Point
- Staging Area
- Repeater
- Helispot
- Dip Site
- Water Source
- Restr. Water Source
- Pump
- Mobile Weather Unit
- Lookout
- Equipment Location
- Nat'l Forest Boundary
- Wilderness
- Wild and Scenic River
- Roadless Area
- Non-USFS Land



1	2	3	
4	5	6	7
8	9	10	11
	12	13	14

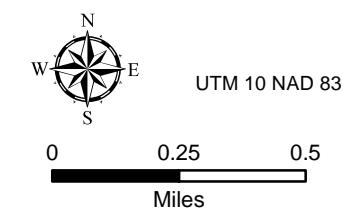


South Complex CA-SHF-002108

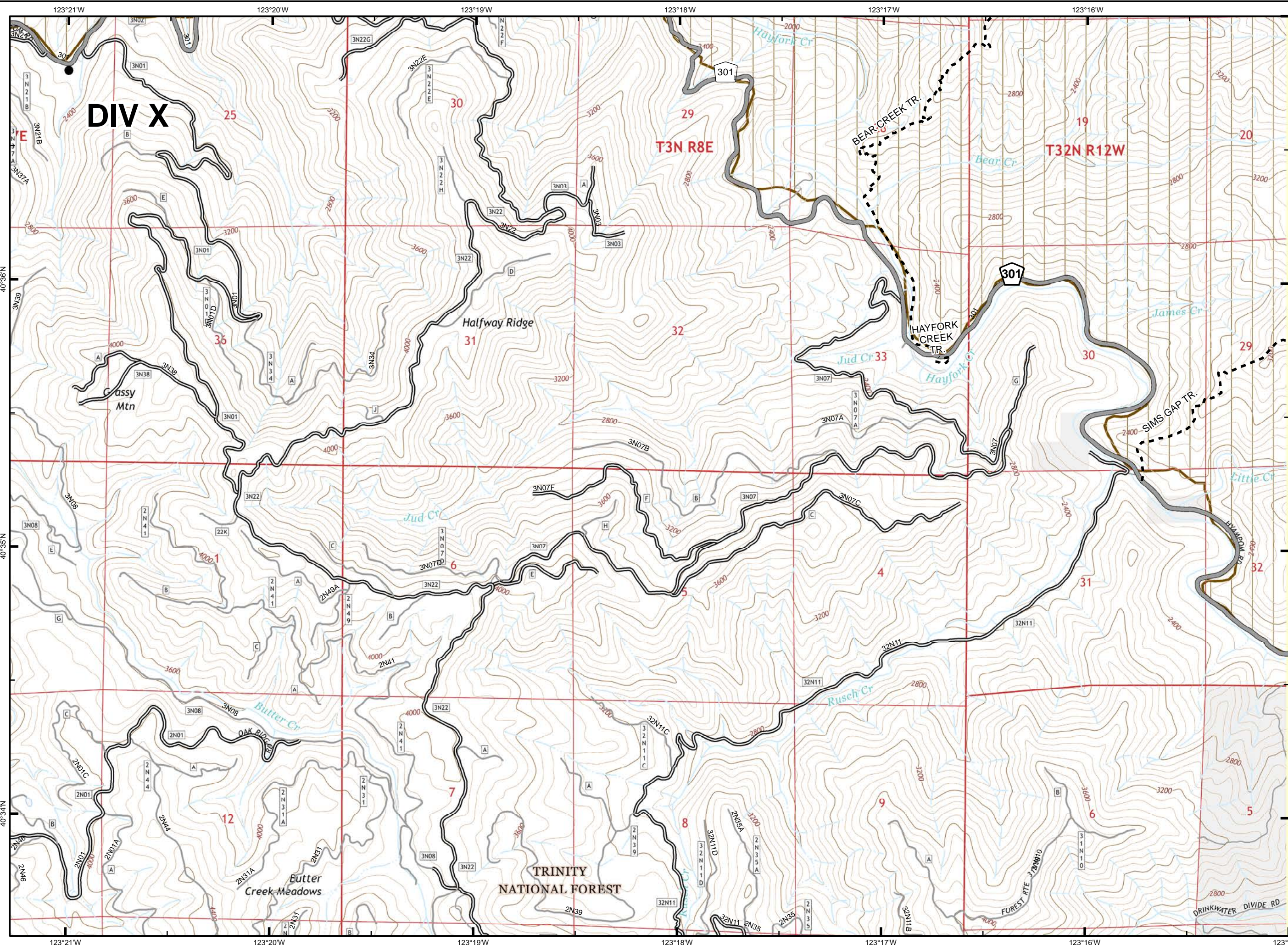
Sept. 2, 2015



- Division Break
- Uncontrolled Fire Edge
- Contained Fire Edge
- H - H - Hand Line
- Completed Dozer Line
- Proposed Dozer Line
- ICP
- Drop Point
- Staging Area
- Repeater
- Helispot
- Dip Site
- Water Source
- Restr. Water Source
- Pump
- Mobile Weather Unit
- Lookout
- Equipment Location
- Nat'l Forest Boundary
- Wilderness
- Wild and Scenic River
- Roadless Area
- Non-USFS Land



1	2	3	
4	5	6	7
8	9	10	11
	12	13	14

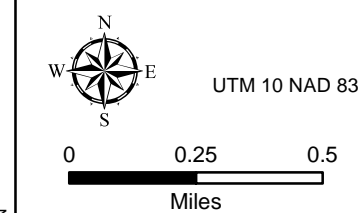


South Complex CA-SHF-002108

Sept. 2, 2015



- Division Break
- Uncontrolled Fire Edge
- Contained Fire Edge
- Hand Line
- Completed Dozer Line
- Proposed Dozer Line
- ICP
- Drop Point
- Staging Area
- Repeater
- Helispot
- Dip Site
- Water Source
- Restr. Water Source
- Pump
- Mobile Weather Unit
- Lookout
- Equipment Location
- Nat'l Forest Boundary
- Wilderness
- Wild and Scenic River
- Roadless Area
- Non-USFS Land



1	2	3
4	5	6
8	9	10
	12	13
		14

