

South Complex CA-SHF-002108

IAP Map Packet

Sept. 4, 2015

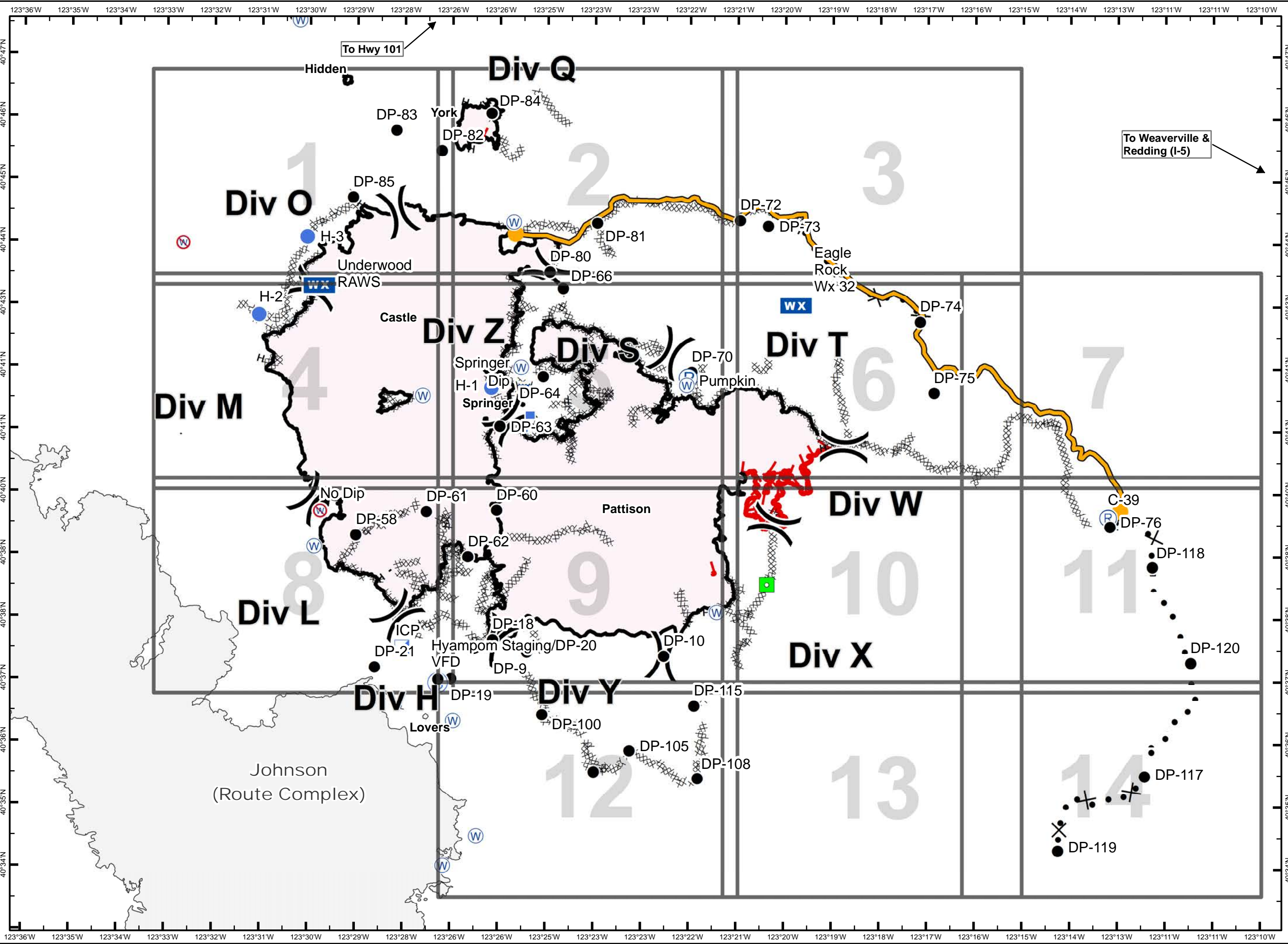
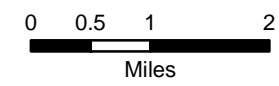


29,385 acres as of
9/2/2015 @ 0200 hrs

- () Division Break
- Uncontrolled Fire Edge
- Contained Fire Edge
- H - H - Hand Line
- Completed Dozer Line
- Proposed Dozer Line
- Incident Command Post
- Drop Point
- Staging Area
- Repeater
- Helispot
- Dip Site
- Water Source
- Restricted Water Source
- Equipment Location



UTM 10 NAD 83

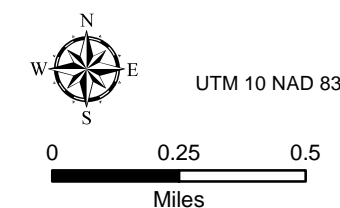


South Complex CA-SHF-002108

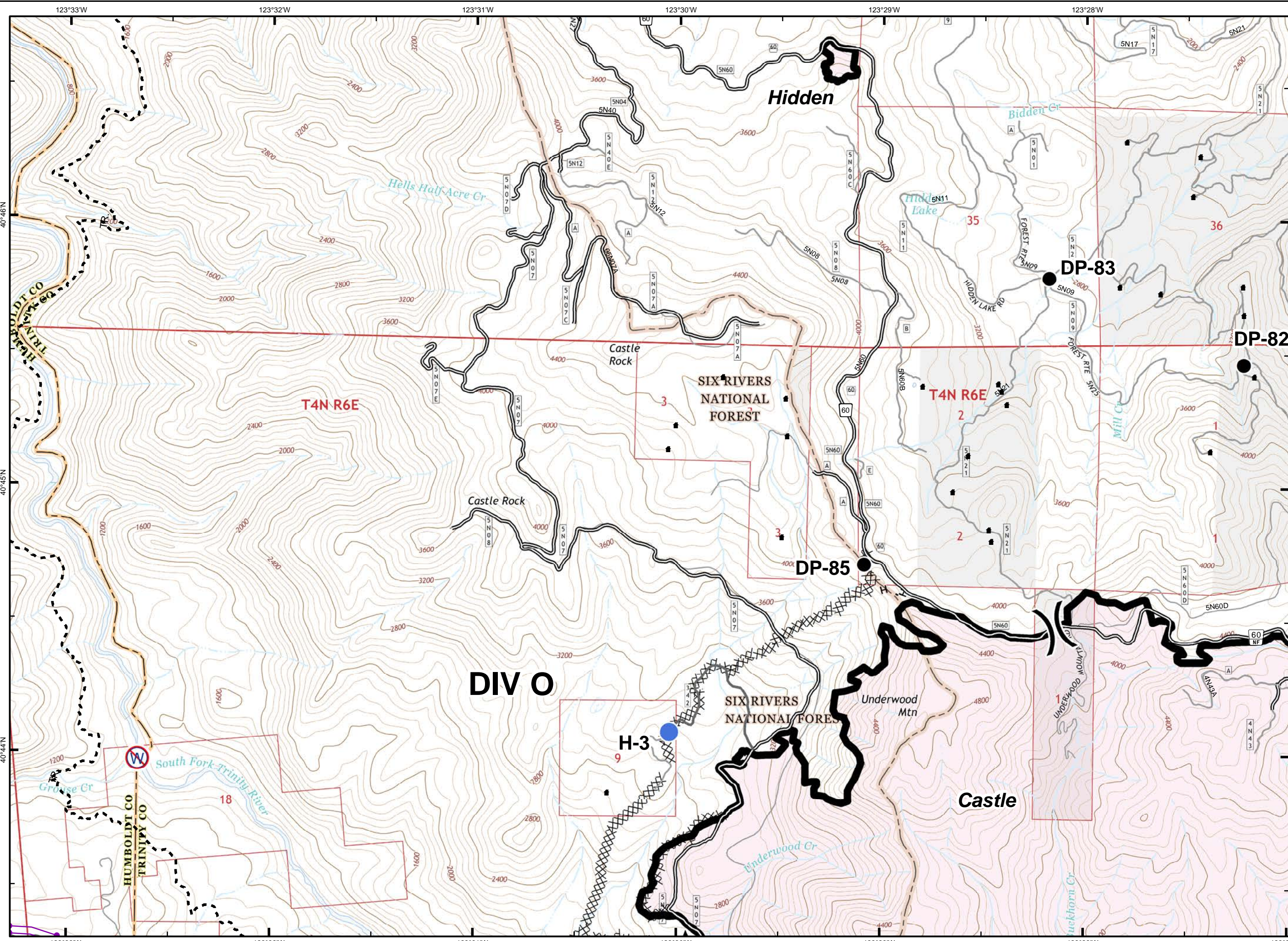
Sept. 4, 2015



- Division Break
- Uncontrolled Fire Edge
- Contained Fire Edge
- Hand Line
- Completed Dozer Line
- Proposed Dozer Line
- ICP
- Drop Point
- Staging Area
- Repeater
- Helispot
- Dip Site
- Water Source
- Restr. Water Source
- Pump
- Mobile Weather Unit
- Lookout
- Equipment Location
- Nat'l Forest Boundary
- Wilderness
- Wild and Scenic River
- Non-USFS Land



1	2	3	
4	5	6	7
8	9	10	11
	12	13	14

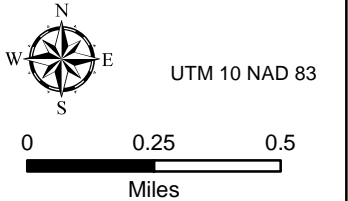


South Complex CA-SHF-002108

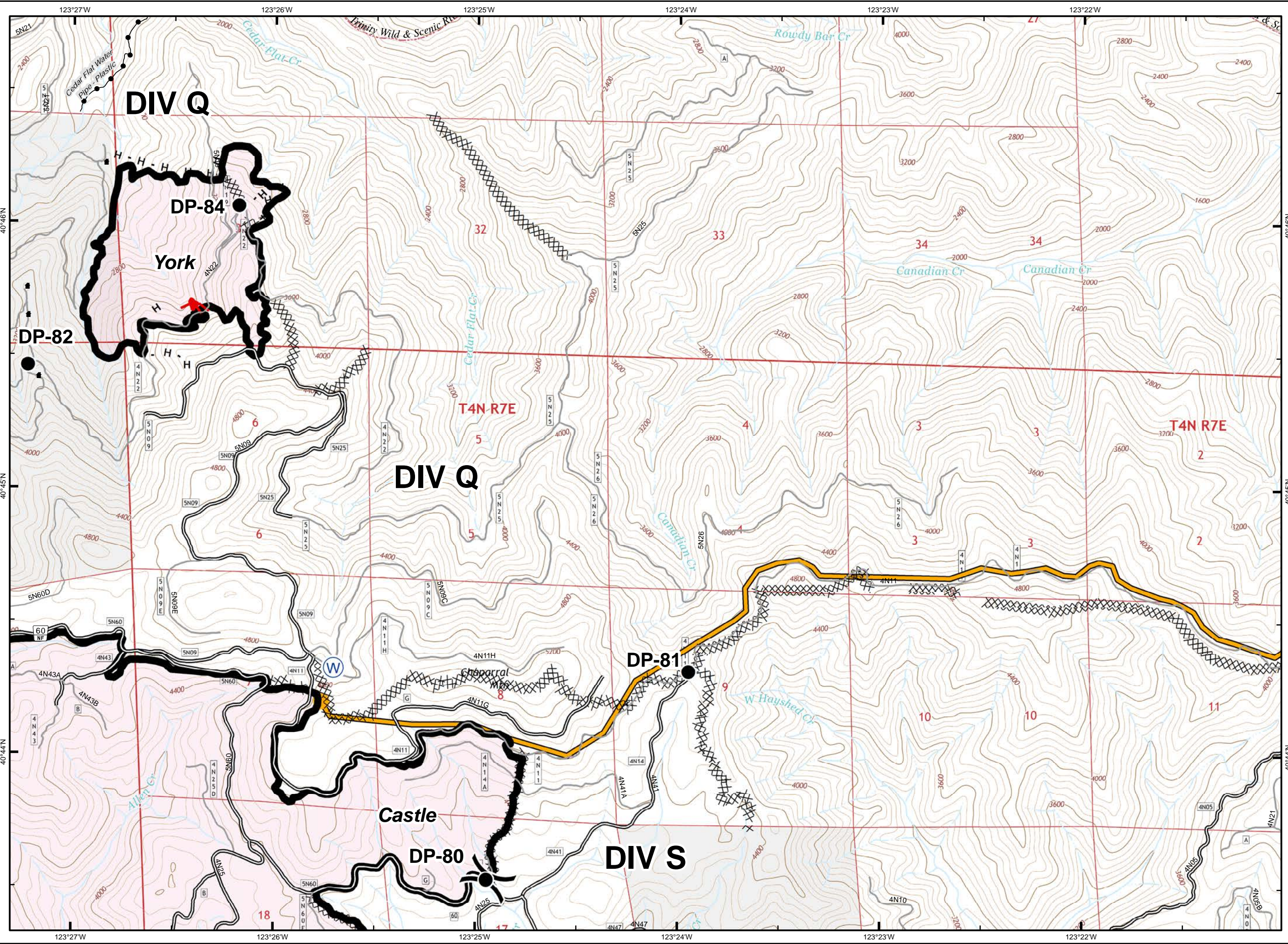
Sept. 4, 2015



- Division Break
- Uncontrolled Fire Edge
- Contained Fire Edge
- Hand Line
- Completed Dozer Line
- Proposed Dozer Line
- ICP
- Drop Point
- Staging Area
- Repeater
- Helispot
- Dip Site
- Water Source
- Restr. Water Source
- Pump
- Mobile Weather Unit
- Lookout
- Equipment Location
- Nat'l Forest Boundary
- Wilderness
- Wild and Scenic River
- Non-USFS Land



1	2	3	
4	5	6	7
8	9	10	11
	12	13	14

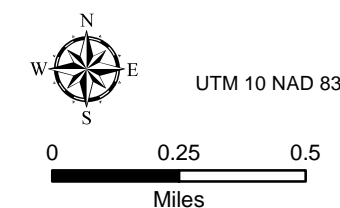


South Complex CA-SHF-002108

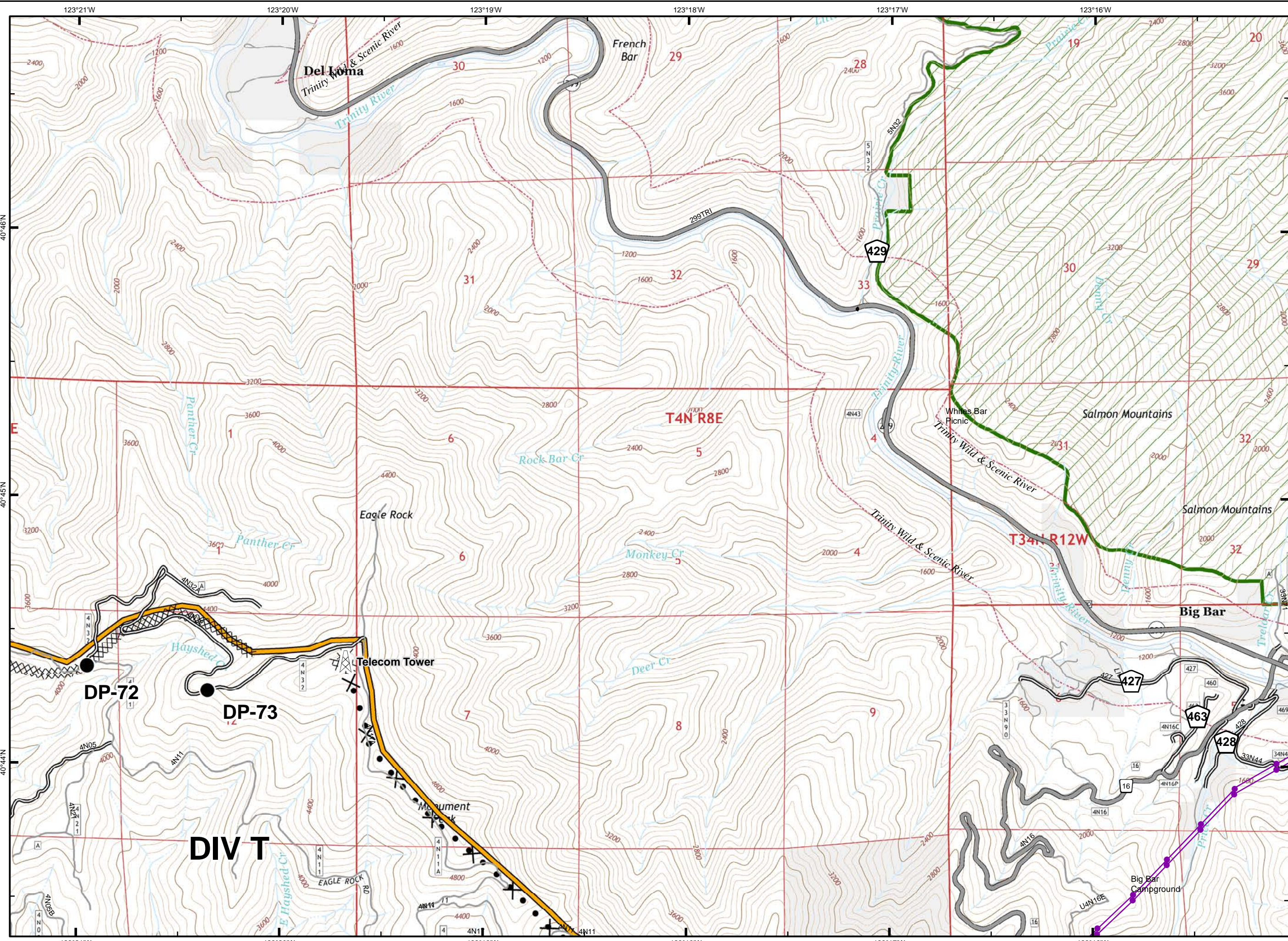
Sept. 4, 2015



- () Division Break
- ┌ Uncontrolled Fire Edge
- ▬ Contained Fire Edge
- H · H Hand Line
- XXXXX Completed Dozer Line
- ✕ Proposed Dozer Line
- ▣ ICP
- Drop Point
- ⊙ Staging Area
- ⊙ Repeater
- Helispot
- ⊙ Dip Site
- ⊙ Water Source
- ⊙ Restr. Water Source
- ⊙ Pump
- ⊙ Mobile Weather Unit
- ⊙ Lookout
- Equipment Location
- ▭ Nat'l Forest Boundary
- ▭ Wilderness
- ▭ Wild and Scenic River
- ▭ Non-USFS Land



1	2	3	
4	5	6	7
8	9	10	11
	12	13	14

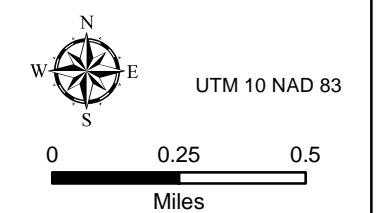


South Complex CA-SHF-002108

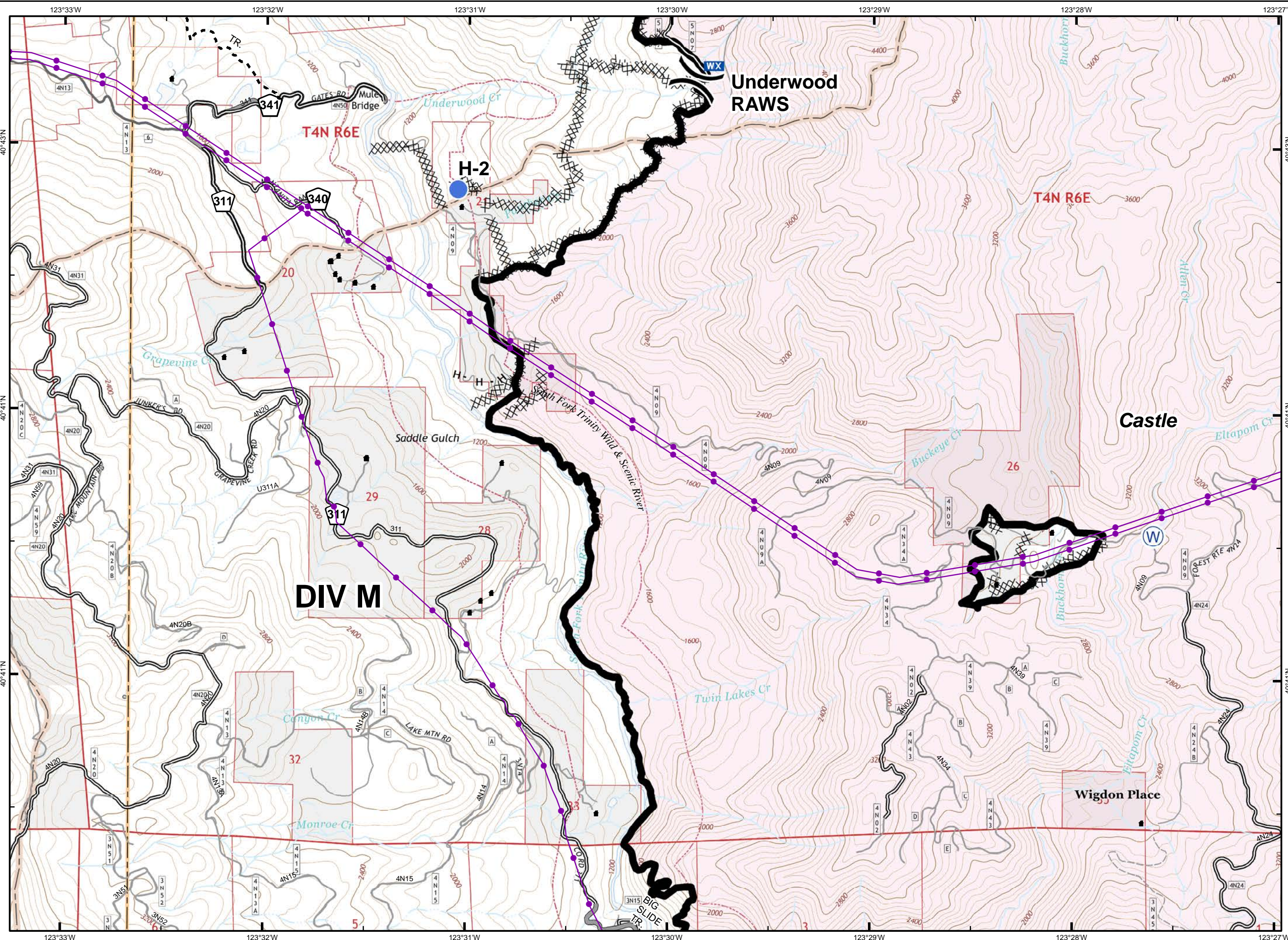
Sept. 4, 2015



- () Division Break
- ┌ Uncontrolled Fire Edge
- ▬ Contained Fire Edge
- H - H Hand Line
- XXXXX Completed Dozer Line
- X• Proposed Dozer Line
- ▣ ICP
- Drop Point
- Ⓢ Staging Area
- Ⓡ Repeater
- Helispot
- ☔ Dip Site
- Ⓜ Water Source
- ⓂⓇ Restr. Water Source
- Ⓟ Pump
- ⓂⓈ Mobile Weather Unit
- Ⓛ Lookout
- Equipment Location
- ▭ Nat'l Forest Boundary
- ▭ Wilderness
- ▭ Wild and Scenic River
- ▭ Non-USFS Land



1	2	3	
4	5	6	7
8	9	10	11
	12	13	14

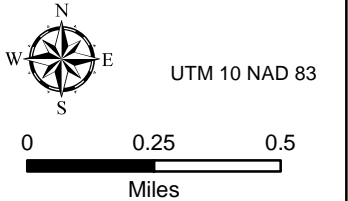


**South Complex
CA-SHF-002108**

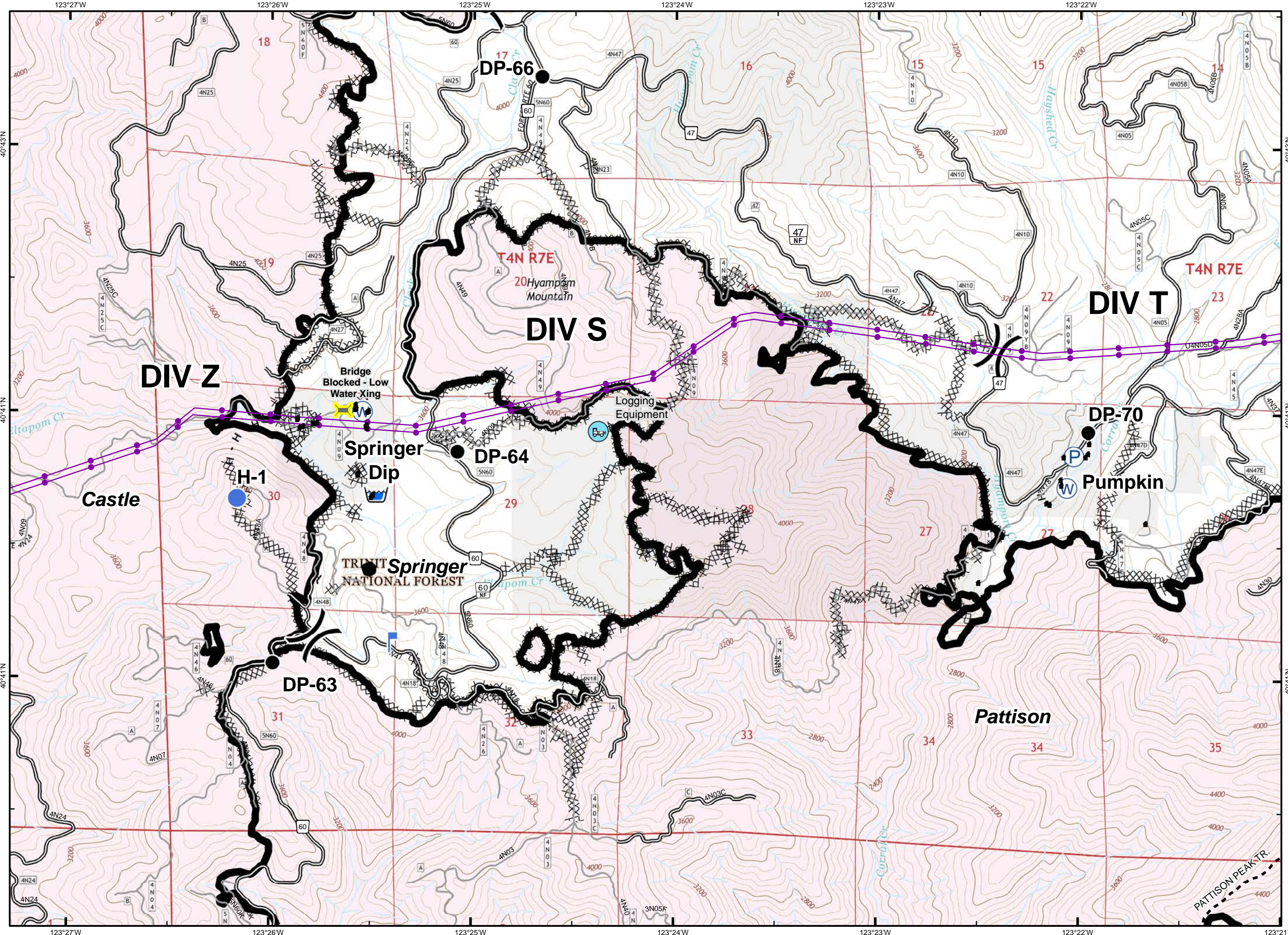
Sept. 4, 2015



- Division Break
- Uncontrolled Fire Edge
- Contained Fire Edge
- Hand Line
- Completed Dozer Line
- Proposed Dozer Line
- ICP
- Drop Point
- Staging Area
- Repeater
- Helispot
- Dip Site
- Water Source
- Restr. Water Source
- Pump
- Mobile Weather Unit
- Lookout
- Equipment Location
- Nat'l Forest Boundary
- Wilderness
- Wild and Scenic River
- Non-USFS Land



1	2	3
4	5	6
8	9	10
	12	13

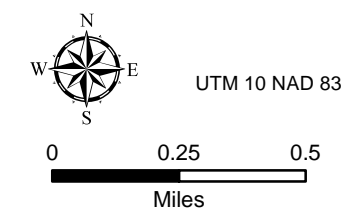


South Complex CA-SHF-002108

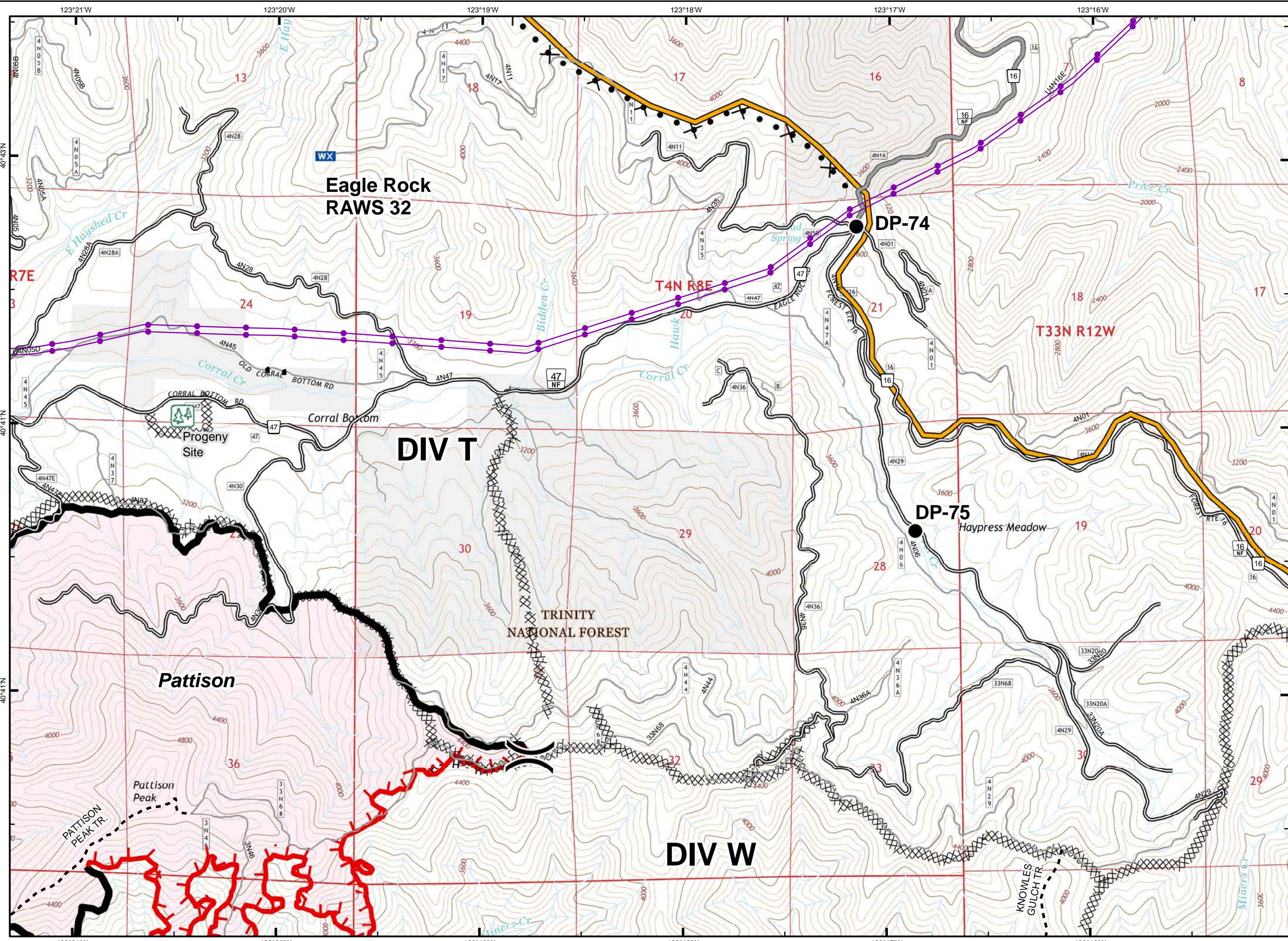
Sept. 4, 2015



- () Division Break
- ┌ Uncontrolled Fire Edge
- Contained Fire Edge
- H - H Hand Line
- XXXXX Completed Dozer Line
- X • Proposed Dozer Line
- ICP
- Drop Point
- Ⓢ Staging Area
- Ⓡ Repeater
- Ⓟ Helispot
- Ⓛ Dip Site
- Ⓦ Water Source
- Ⓦ (with slash) Restr. Water Source
- Ⓟ Pump
- Ⓦ (with WX) Mobile Weather Unit
- Ⓛ Lookout
- Ⓛ (with green square) Equipment Location
- ▭ (with dashed border) Nat'l Forest Boundary
- ▭ (with green border) Wilderness
- ▭ (with red border) Wild and Scenic River
- ▭ (with grey border) Non-USFS Land



1	2	3
4	5	6
8	9	10
	12	13
		14

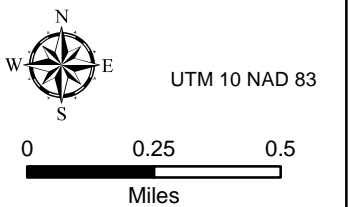


South Complex CA-SHF-002108

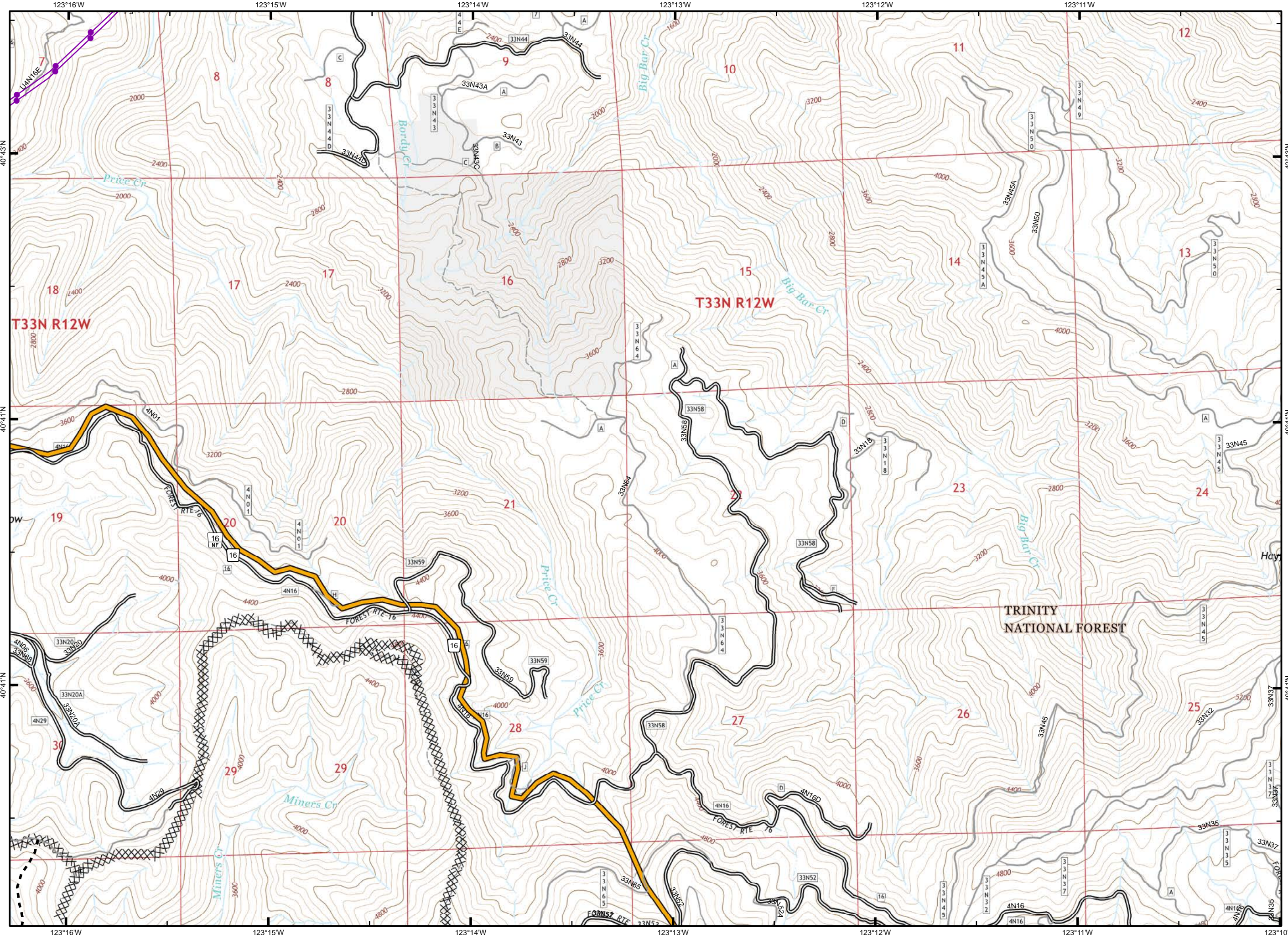
Sept. 4, 2015



- Division Break
- Uncontrolled Fire Edge
- Contained Fire Edge
- Hand Line
- Completed Dozer Line
- Proposed Dozer Line
- ICP
- Drop Point
- Staging Area
- Repeater
- Helispot
- Dip Site
- Water Source
- Restr. Water Source
- Pump
- Mobile Weather Unit
- Lookout
- Equipment Location
- Nat'l Forest Boundary
- Wilderness
- Wild and Scenic River
- Non-USFS Land

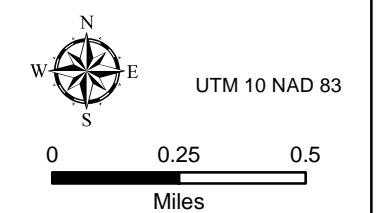


1	2	3	4
4	5	6	7
8	9	10	11
	12	13	14

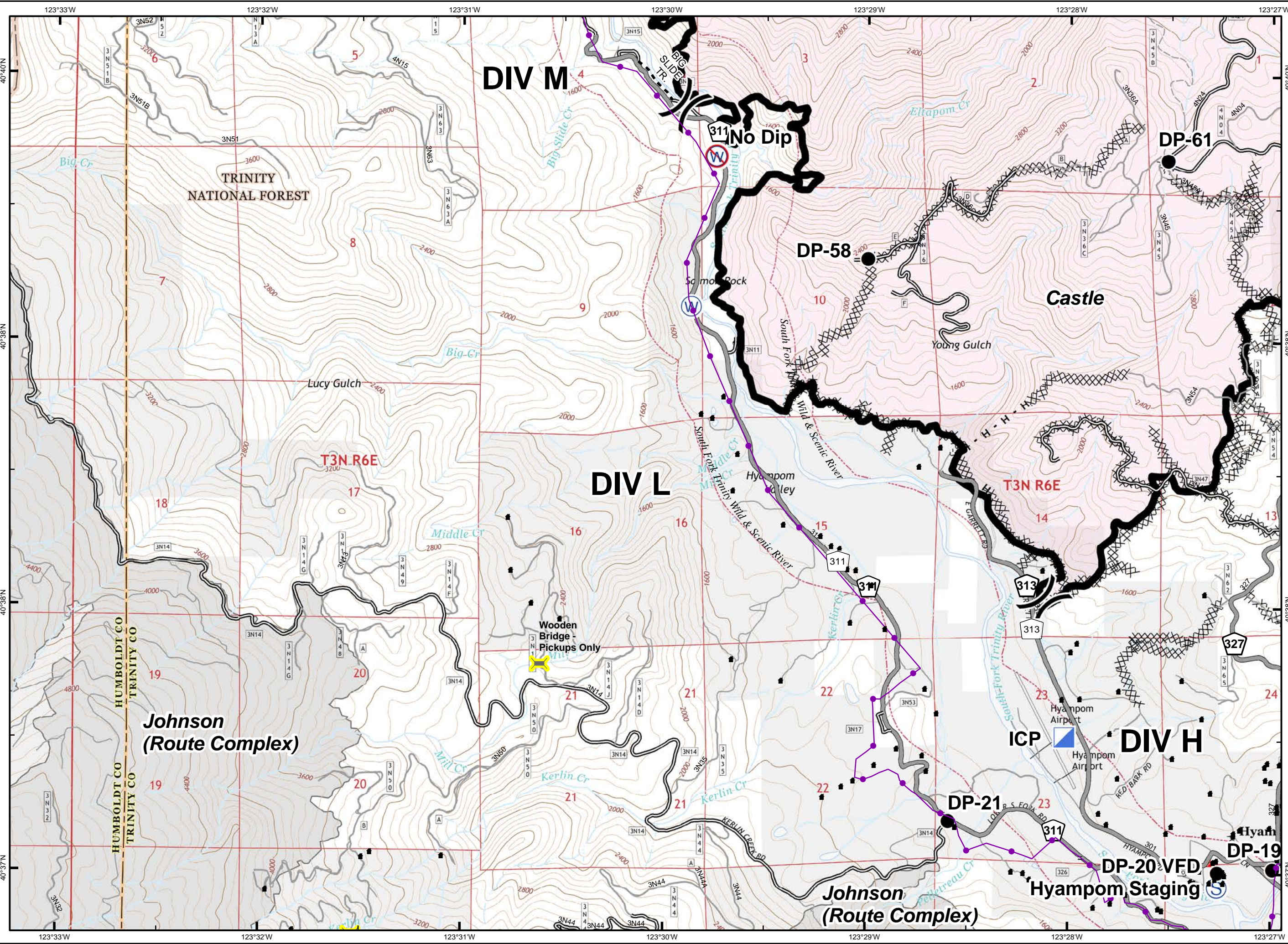




- () Division Break
- └ Uncontrolled Fire Edge
- Contained Fire Edge
- H - H Hand Line
- XXXXX Completed Dozer Line
- X • Proposed Dozer Line
- ▣ ICP
- Drop Point
- S Staging Area
- R Repeater
- Helispot
- Ⓜ Dip Site
- W Water Source
- W Restr. Water Source
- P Pump
- wx Mobile Weather Unit
- └ Lookout
- Equipment Location
- Nat'l Forest Boundary
- Wilderness
- Wild and Scenic River
- Non-USFS Land



1	2	3	
4	5	6	7
8	9	10	11
	12	13	14

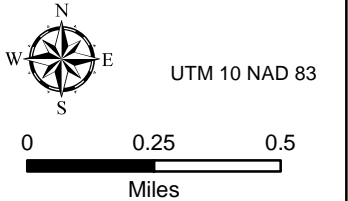


South Complex CA-SHF-002108

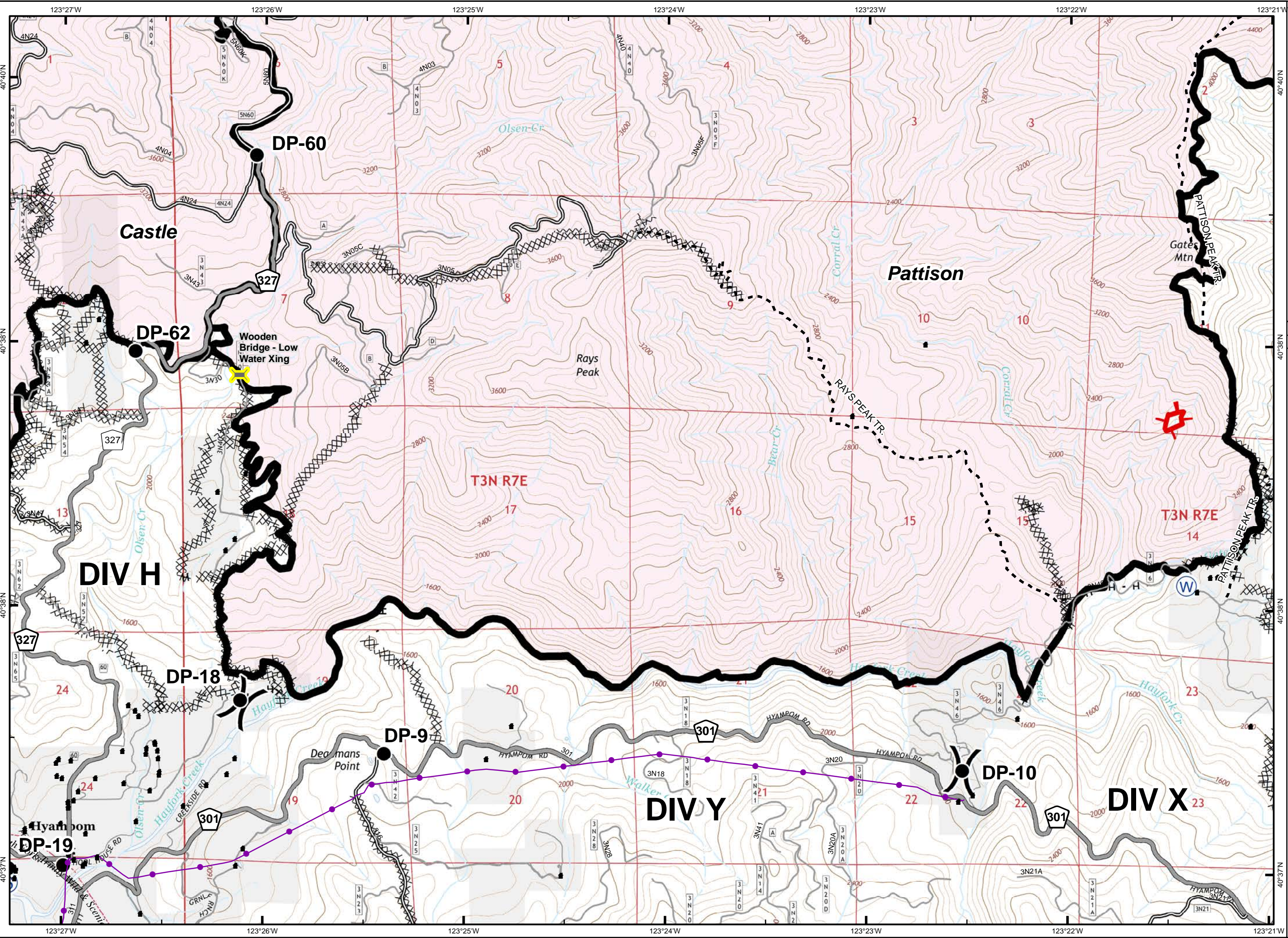
Sept. 4, 2015



- () Division Break
- └ Uncontrolled Fire Edge
- Contained Fire Edge
- H - H Hand Line
- XXXXX Completed Dozer Line
- X• Proposed Dozer Line
- ICP
- Drop Point
- Ⓢ Staging Area
- Ⓡ Repeater
- Ⓟ Helispot
- Ⓜ Dip Site
- Ⓦ Water Source
- ⓌⓂ Restr. Water Source
- Ⓟ Pump
- ⓂⓌ Mobile Weather Unit
- Ⓛ Lookout
- Equipment Location
- Nat'l Forest Boundary
- Wilderness
- Wild and Scenic River
- Non-USFS Land



1	2	3	
4	5	6	7
8	9	10	11
	12	13	14



123°27'W 123°26'W 123°25'W 123°24'W 123°23'W 123°22'W 123°21'W

40°40'N 40°38'N 40°36'N 40°34'N 40°32'N 40°30'N 40°28'N 40°26'N 40°24'N 40°22'N 40°20'N

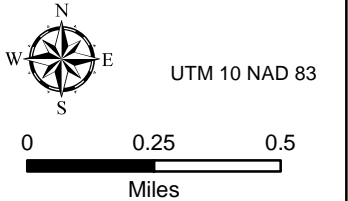
123°27'W 123°26'W 123°25'W 123°24'W 123°23'W 123°22'W 123°21'W

South Complex CA-SHF-002108

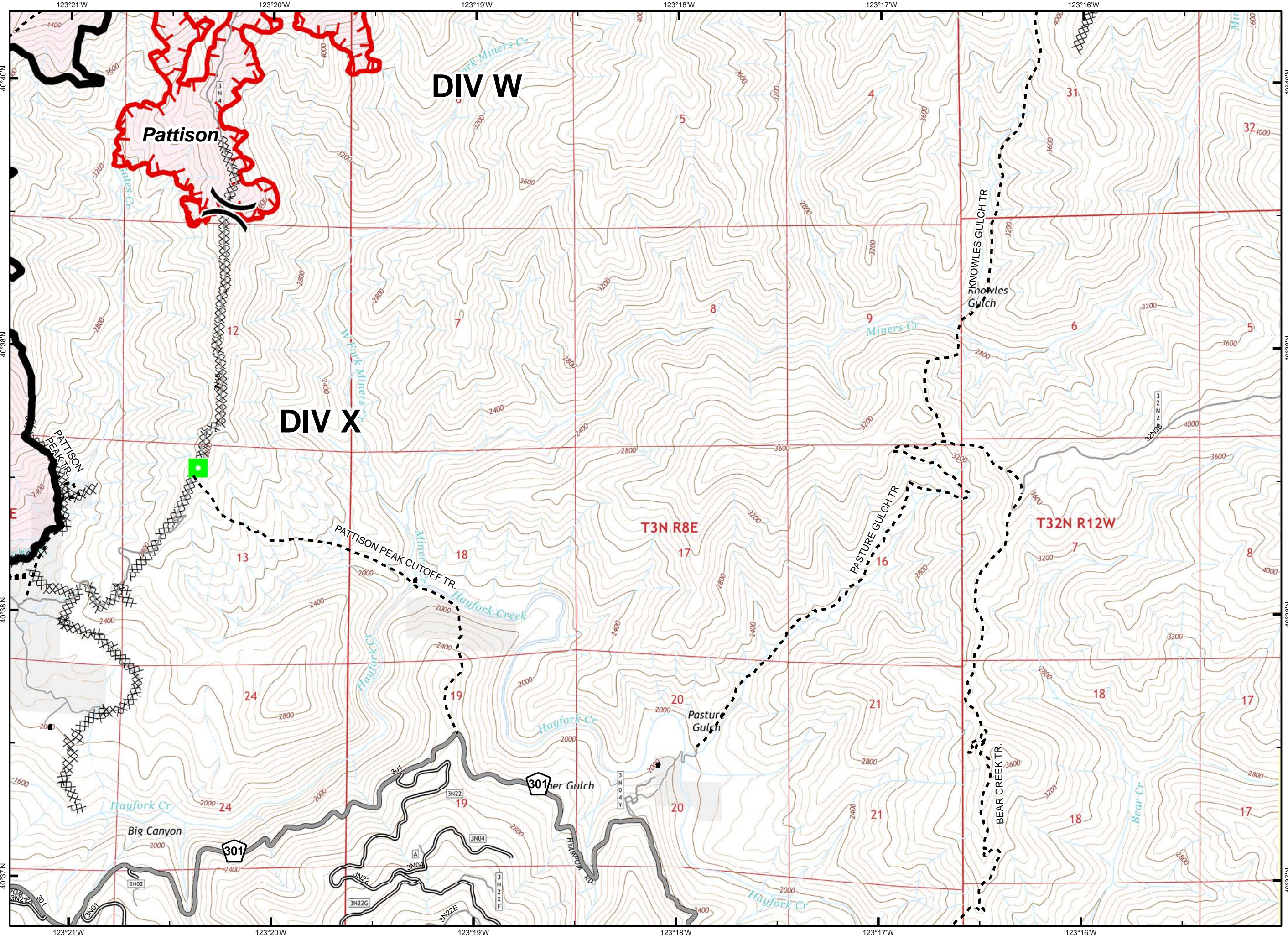
Sept. 4, 2015



- Division Break
- Uncontrolled Fire Edge
- Contained Fire Edge
- Hand Line
- Completed Dozer Line
- Proposed Dozer Line
- ICP
- Drop Point
- Staging Area
- Repeater
- Helispot
- Dip Site
- Water Source
- Restr. Water Source
- Pump
- Mobile Weather Unit
- Lookout
- Equipment Location
- Nat'l Forest Boundary
- Wilderness
- Wild and Scenic River
- Non-USFS Land



1	2	3	
4	5	6	7
8	9	10	11
	12	13	14

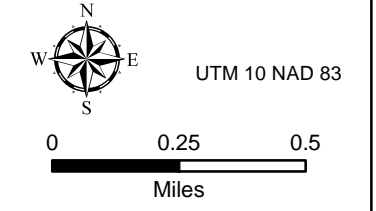


South Complex CA-SHF-002108

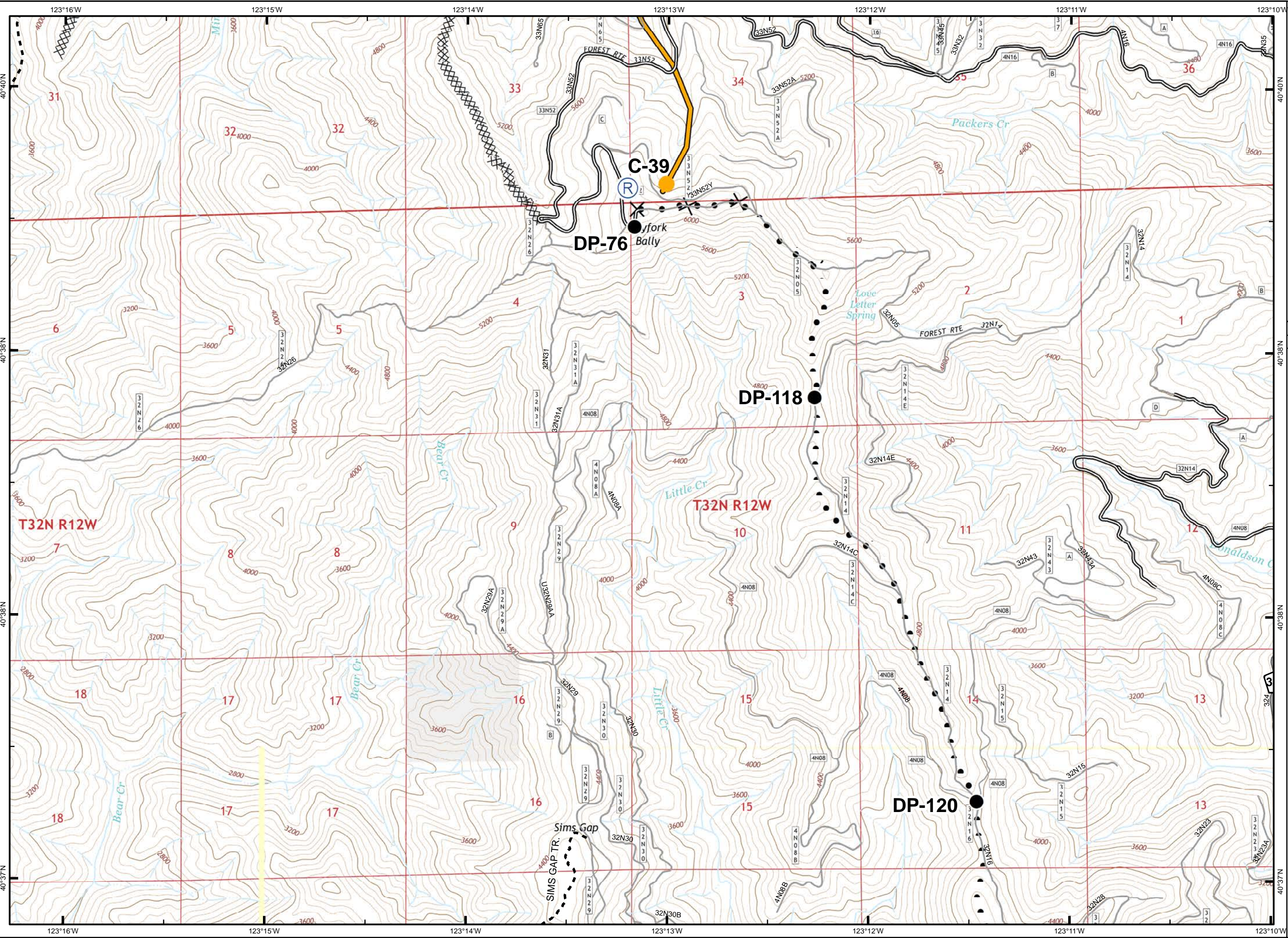
Sept. 4, 2015



- Division Break
- Uncontrolled Fire Edge
- Contained Fire Edge
- Hand Line
- Completed Dozer Line
- Proposed Dozer Line
- ICP
- Drop Point
- Staging Area
- Repeater
- Helispot
- Dip Site
- Water Source
- Restr. Water Source
- Pump
- Mobile Weather Unit
- Lookout
- Equipment Location
- Nat'l Forest Boundary
- Wilderness
- Wild and Scenic River
- Non-USFS Land



1	2	3	
4	5	6	7
8	9	10	11
	12	13	14

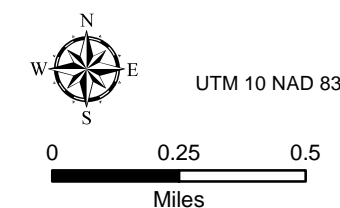


South Complex CA-SHF-002108

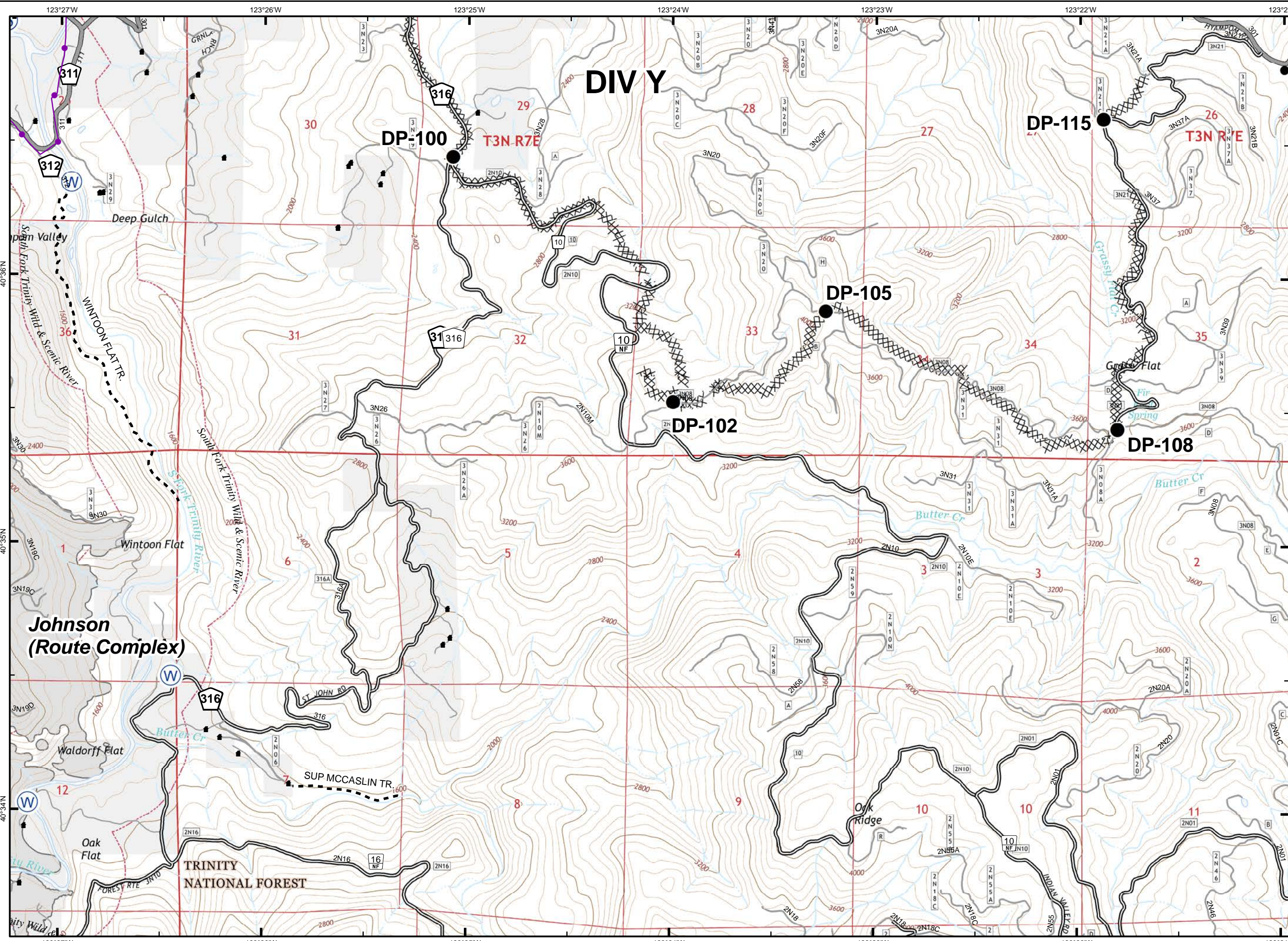
Sept. 4, 2015



- Division Break
- Uncontrolled Fire Edge
- Contained Fire Edge
- Hand Line
- Completed Dozer Line
- Proposed Dozer Line
- ICP
- Drop Point
- Staging Area
- Repeater
- Helispot
- Dip Site
- Water Source
- Restr. Water Source
- Pump
- Mobile Weather Unit
- Lookout
- Equipment Location
- Nat'l Forest Boundary
- Wilderness
- Wild and Scenic River
- Non-USFS Land



1	2	3	
4	5	6	7
8	9	10	11
	12	13	14



DIV Y

DP-100

DP-105

DP-102

DP-115

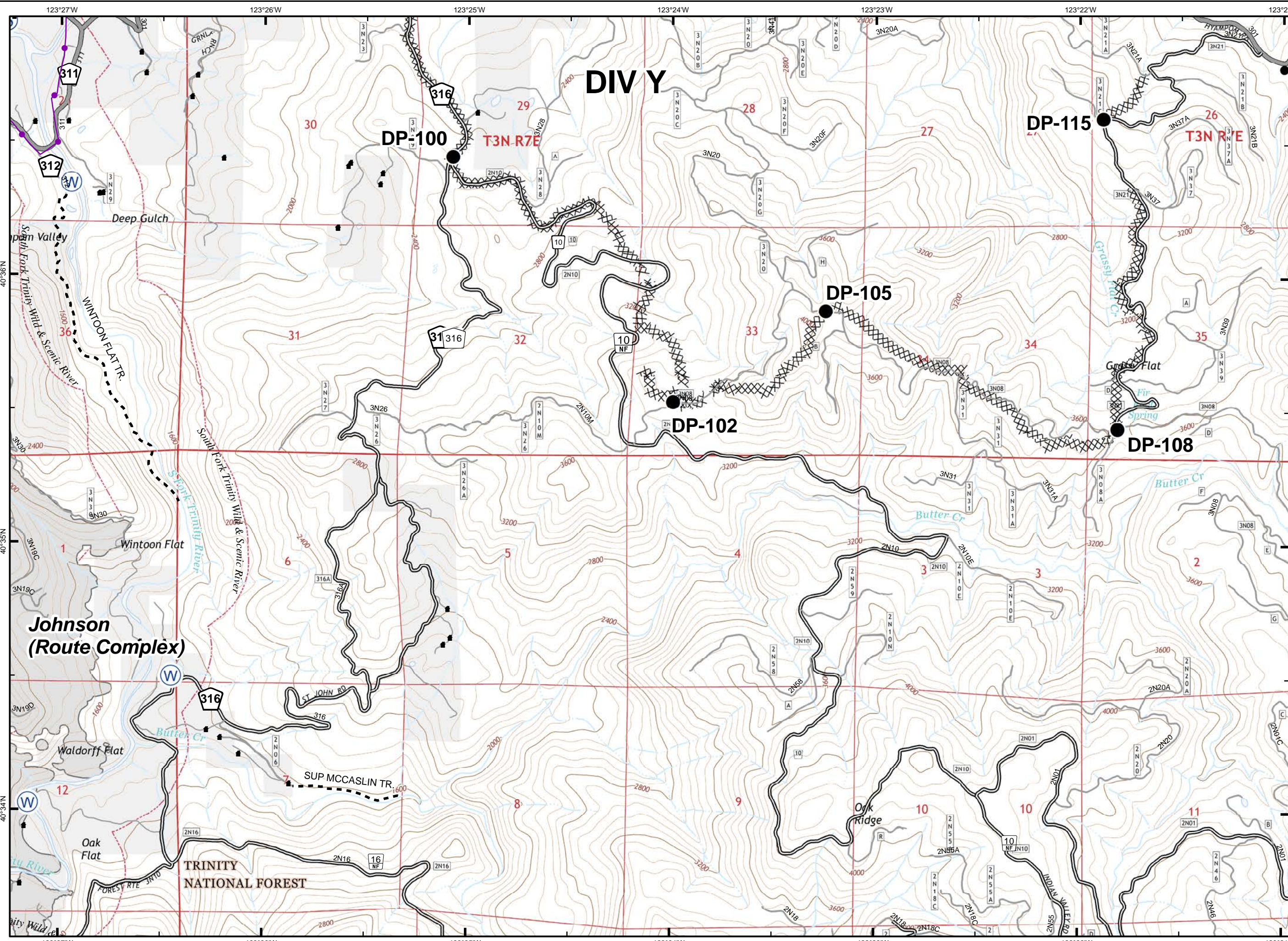
DP-108

**Johnson
(Route Complex)**

TRINITY
NATIONAL FOREST

T3N-R7E

T3N R7E

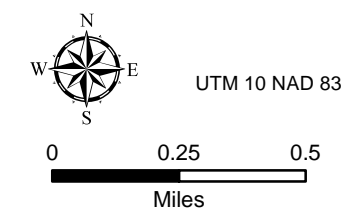


South Complex CA-SHF-002108

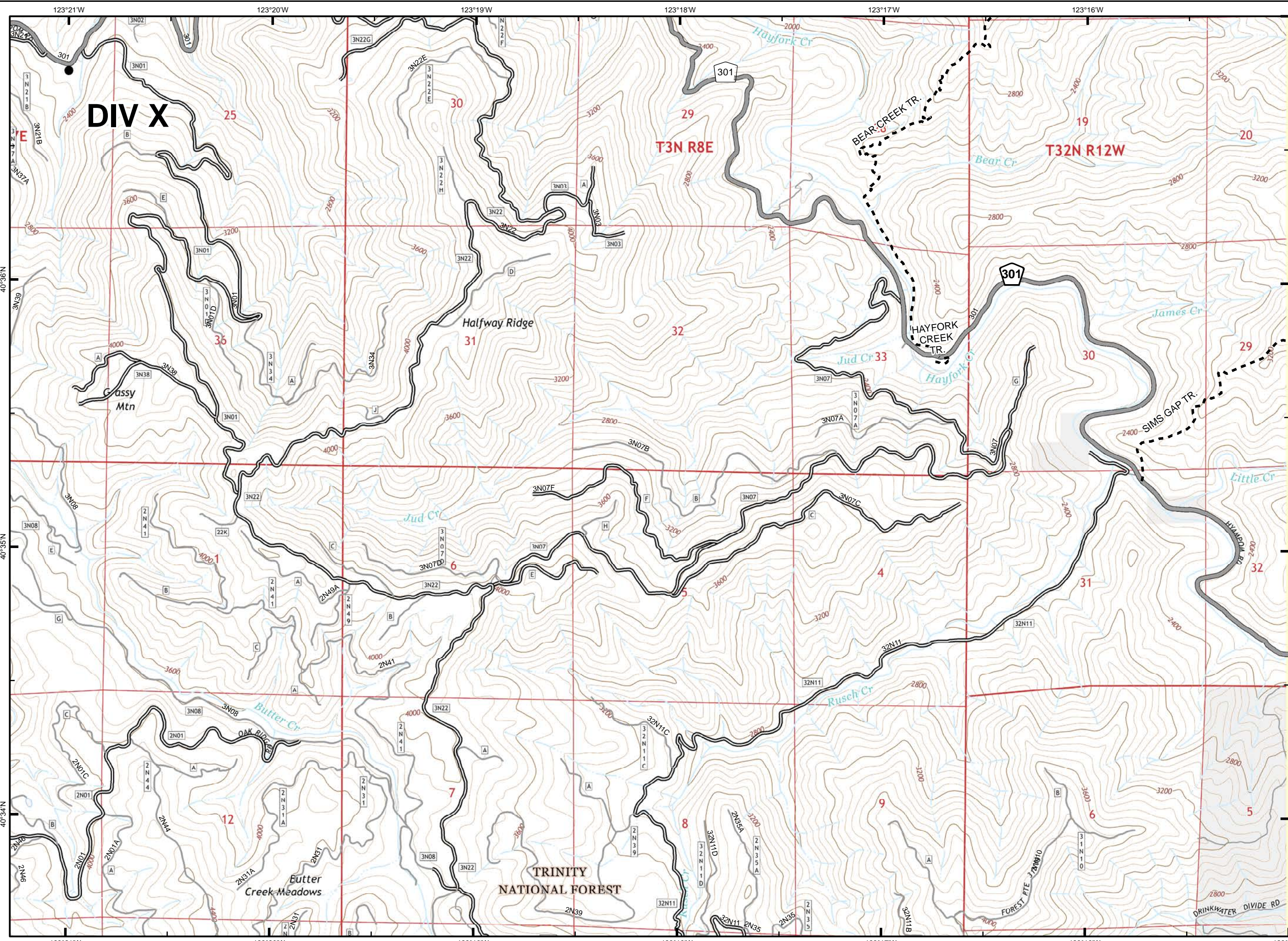
Sept. 4, 2015



- Division Break
- Uncontrolled Fire Edge
- Contained Fire Edge
- Hand Line
- Completed Dozer Line
- Proposed Dozer Line
- ICP
- Drop Point
- Staging Area
- Repeater
- Helispot
- Dip Site
- Water Source
- Restr. Water Source
- Pump
- Mobile Weather Unit
- Lookout
- Equipment Location
- Nat'l Forest Boundary
- Wilderness
- Wild and Scenic River
- Non-USFS Land



1	2	3	
4	5	6	7
8	9	10	11
	12	13	14

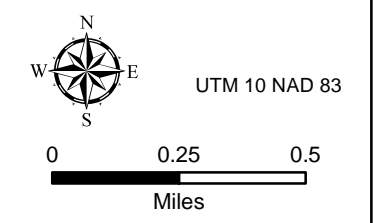


South Complex CA-SHF-002108

Sept. 4, 2015



- Division Break
- Uncontrolled Fire Edge
- Contained Fire Edge
- Hand Line
- Completed Dozer Line
- Proposed Dozer Line
- ICP
- Drop Point
- Staging Area
- Repeater
- Helispot
- Dip Site
- Water Source
- Restr. Water Source
- Pump
- Mobile Weather Unit
- Lookout
- Equipment Location
- Nat'l Forest Boundary
- Wilderness
- Wild and Scenic River
- Non-USFS Land



1	2	3	
4	5	6	7
8	9	10	11
	12	13	14

