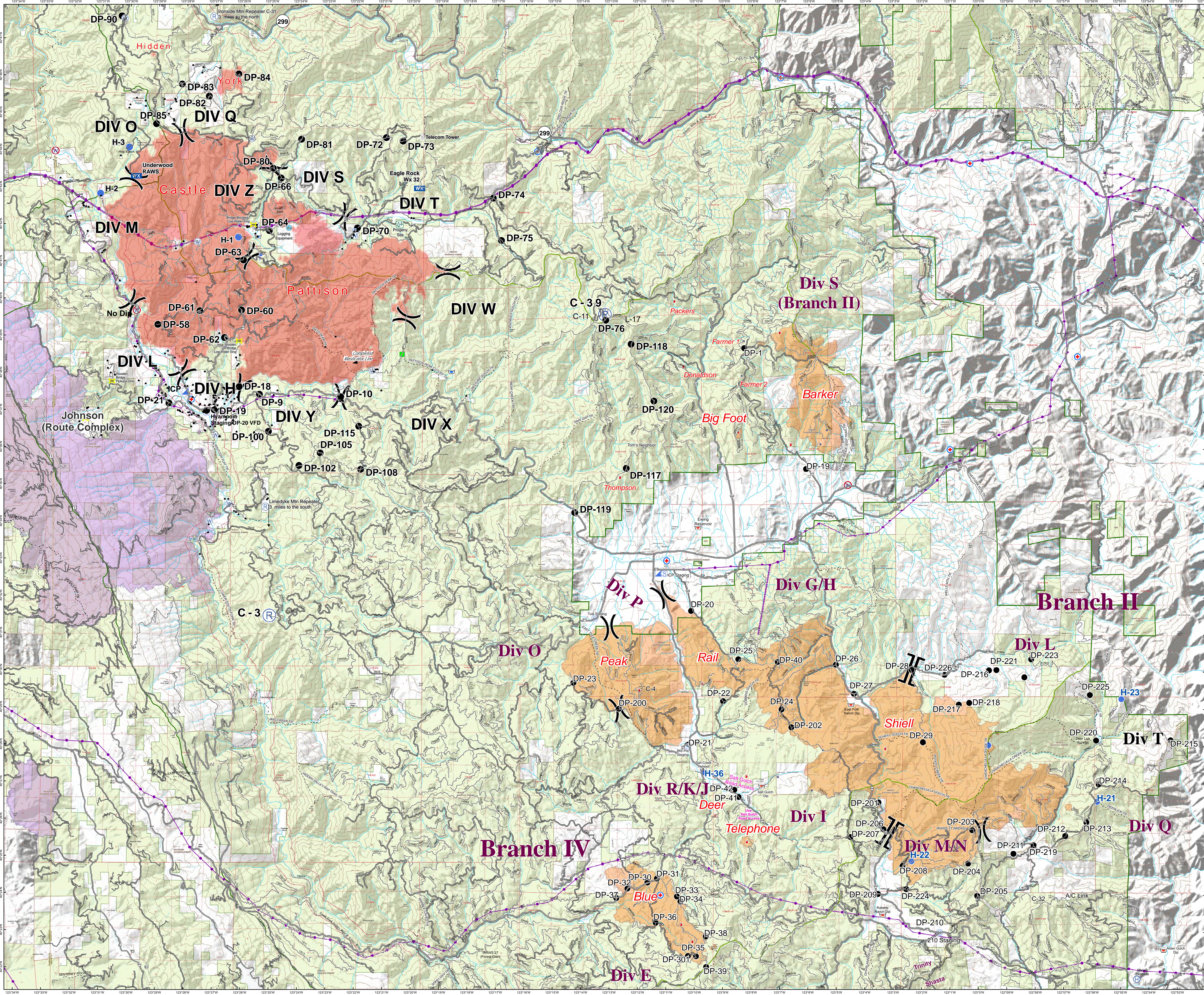


South Complex

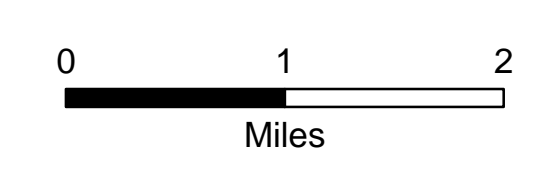
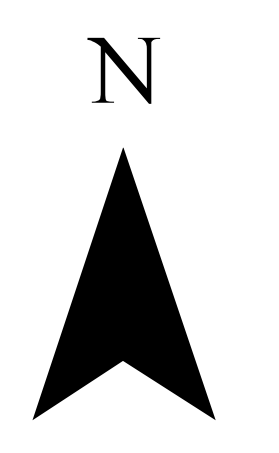
SHF-002108

September 7, 2015

Medical Unit Tracking Map



- () Division
- ⊕ MediVac Site
- Ⓜ Dip Site
- Drop Point
- Ⓜ Helispot
- Ⓜ Incident Command Post
- Ⓜ Lookout
- Ⓜ Mobile Weather Unit
- Ⓜ Pump
- Ⓜ Repeater
- Ⓜ Staging Area
- Ⓜ Water Source
- Ⓜ Restricted Water Source
- Ⓜ Equipment Location
- Transmission Line
- Structure
- Wild and Scenic River
- ▭ Forest Boundary
- ▭ Ranger District Boundary



Map Datum: NAD 83 UTM Zone 10
980215 4:28:56 PM
MapInfoGroup_OPS_inTE_land_20150802_HHMM_SouthComplex_CASH2108_080208.mxd