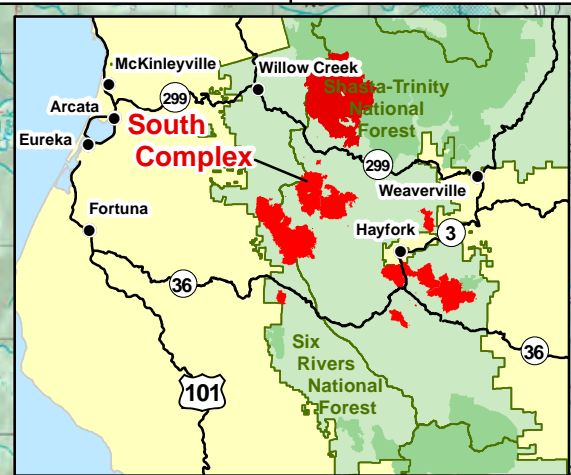
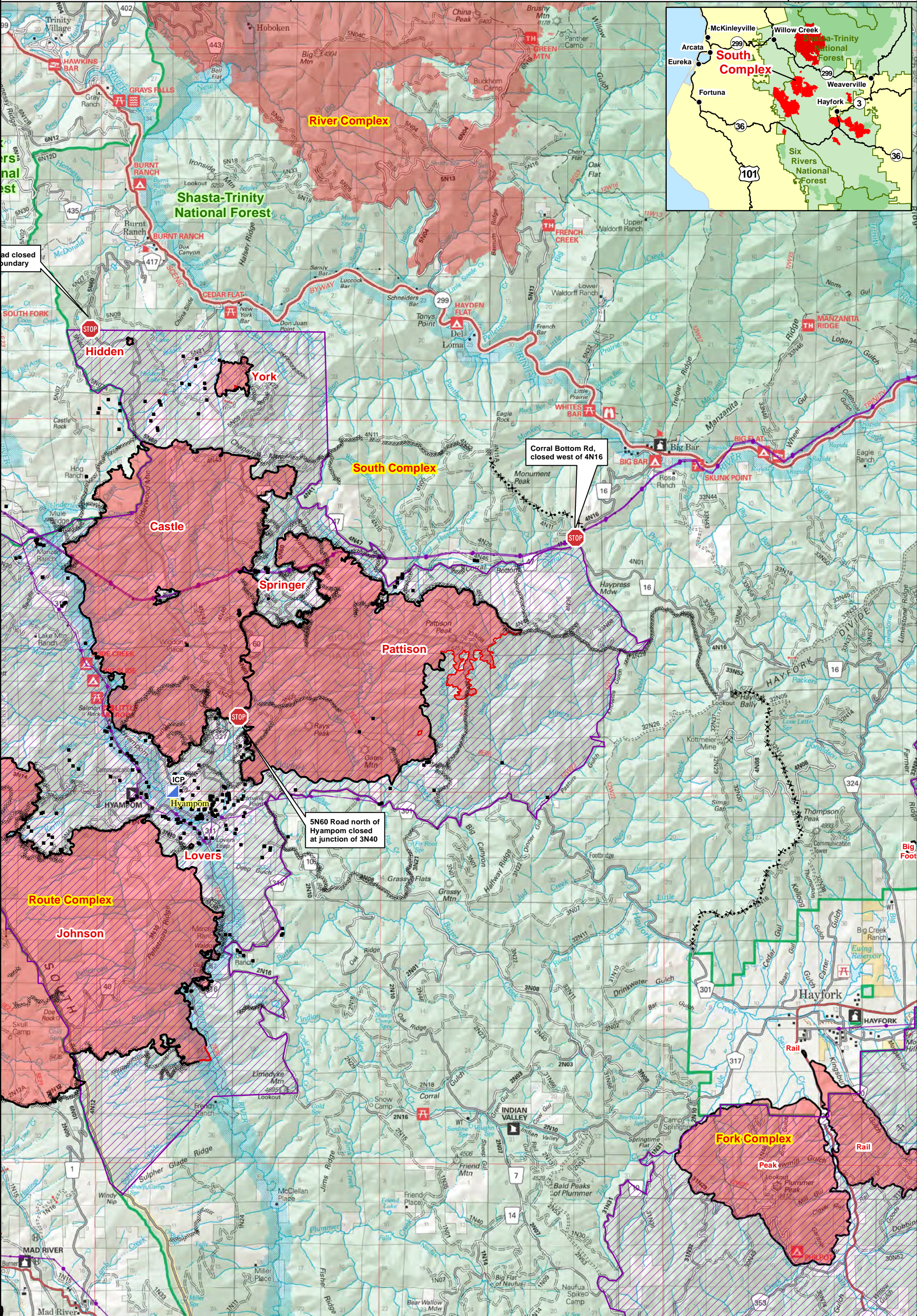
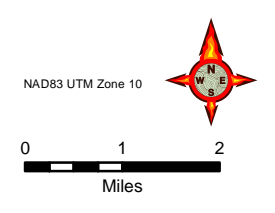




# SOUTH COMPLEX CA-SHF-002108

Public Information  
September 7, 2015

- Fire Area
- South Complex ICP
- Uncontrolled Fire Edge
- Contained Fire Edge
- National Forest Boundary
- Non-Forest Service Land
- Road Closure Point
- Completed Dozer Line
- Proposed Dozer Line
- Transmission Lines
- Structure
- Forest Closure Area



road closed boundary

Corral Bottom Rd, closed west of 4N16

5N60 Road north of Hyampom closed at junction of 3N40