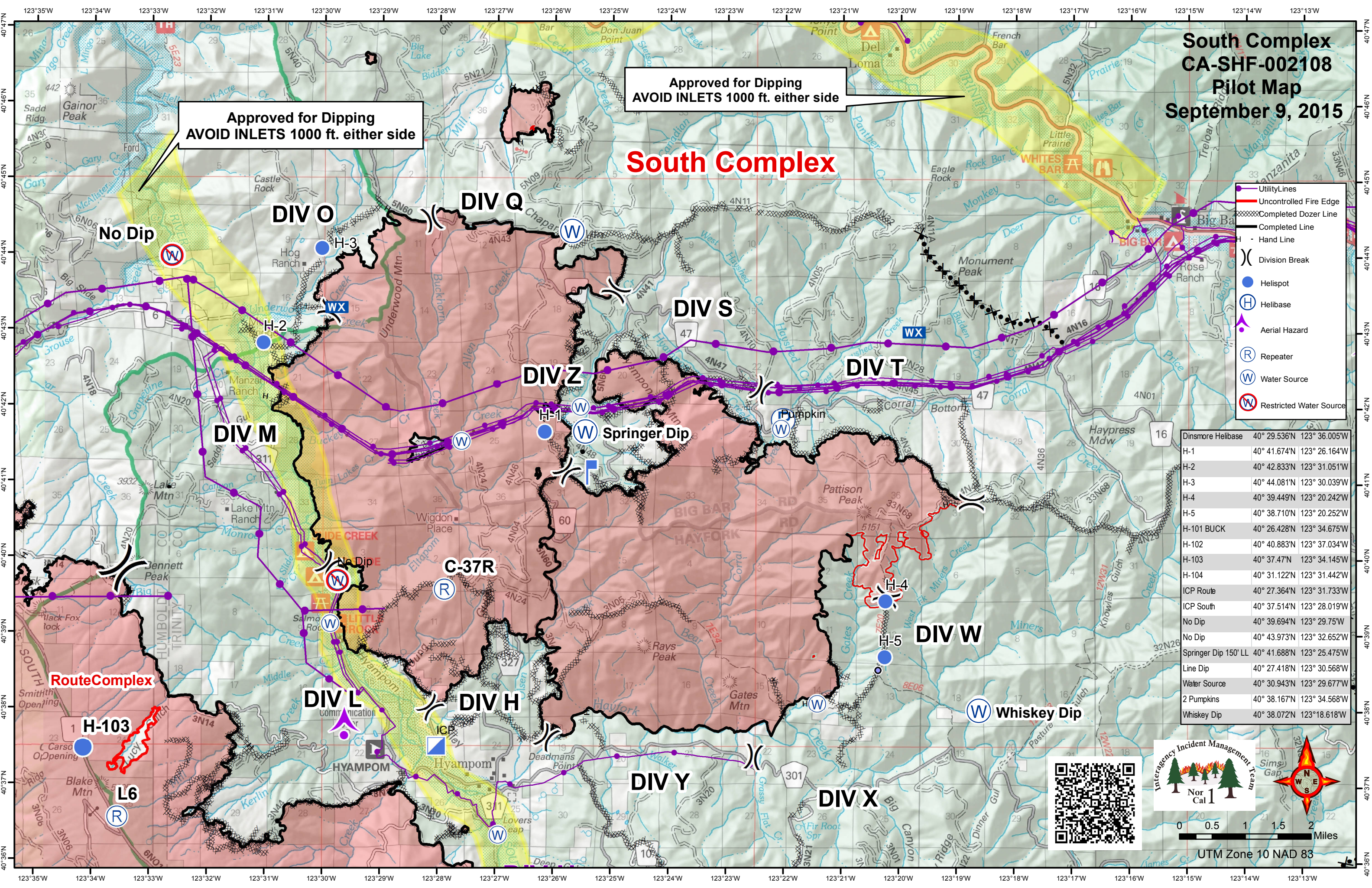


**South Complex  
CA-SHF-002108  
Pilot Map  
September 9, 2015**

Approved for Dipping  
AVOID INLETS 1000 ft. either side

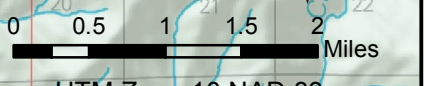
Approved for Dipping  
AVOID INLETS 1000 ft. either side

**South Complex**



- Utility Lines
- Uncontrolled Fire Edge
- Completed Dozer Line
- Completed Line
- Hand Line
- Division Break
- Helispot
- Helibase
- Aerial Hazard
- Repeater
- Water Source
- Restricted Water Source

Dinsmore Helibase	40° 29.536'N	123° 36.005'W
H-1	40° 41.674'N	123° 26.164'W
H-2	40° 42.833'N	123° 31.051'W
H-3	40° 44.081'N	123° 30.039'W
H-4	40° 39.449'N	123° 20.242'W
H-5	40° 38.710'N	123° 20.252'W
H-101 BUCK	40° 26.428'N	123° 34.675'W
H-102	40° 40.883'N	123° 37.034'W
H-103	40° 37.47'N	123° 34.145'W
H-104	40° 31.122'N	123° 31.442'W
ICP Route	40° 27.364'N	123° 31.733'W
ICP South	40° 37.514'N	123° 28.019'W
No Dip	40° 39.694'N	123° 29.75'W
No Dip	40° 43.973'N	123° 32.652'W
Springer Dip 150' LL	40° 41.688'N	123° 25.475'W
Line Dip	40° 27.418'N	123° 30.568'W
Water Source	40° 30.943'N	123° 29.677'W
2 Pumpkins	40° 38.167'N	123° 34.568'W
Whiskey Dip	40° 38.072'N	123° 18.618'W



UTM Zone 10 NAD 83