



# SOUTH COMPLEX

## CA-SHF-002108

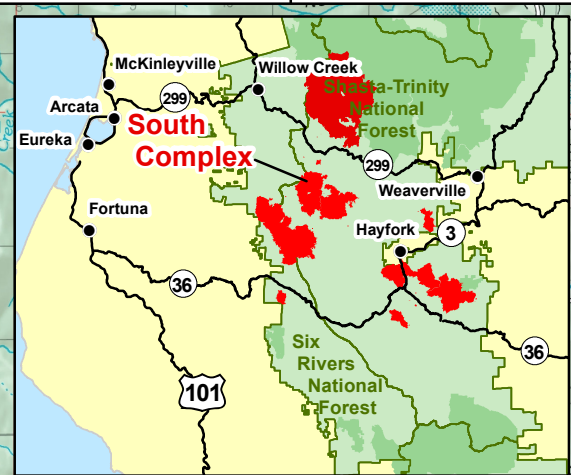
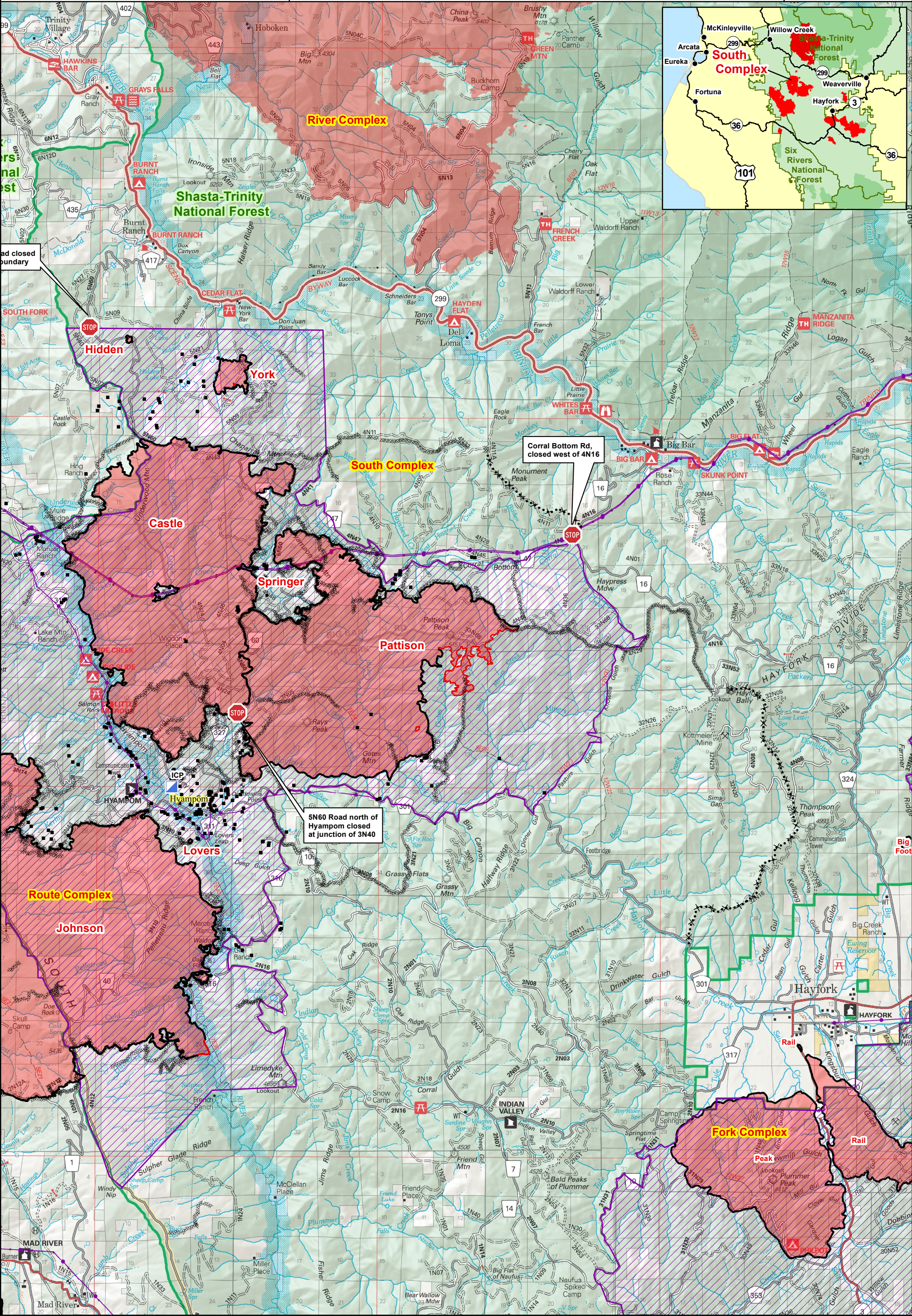
### Public Information

### September 9, 2015

- Fire Area
- South Complex ICP
- Road Closure Point
- Forest Closure Area
- Uncontrolled Fire Edge
- Contained Fire Edge
- Completed Dozer Line
- Proposed Dozer Line
- National Forest Boundary
- Non-Forest Service Land
- Transmission Lines
- Structure

NAD83 UTM Zone 10

0 1 2  
Miles



road closed boundary

5N60 Road north of Hyampom closed at junction of 3N40

Corral Bottom Rd, closed west of 4N16