

# South Complex CA-SHF-002108

## IAP Map Packet

September 11, 2015

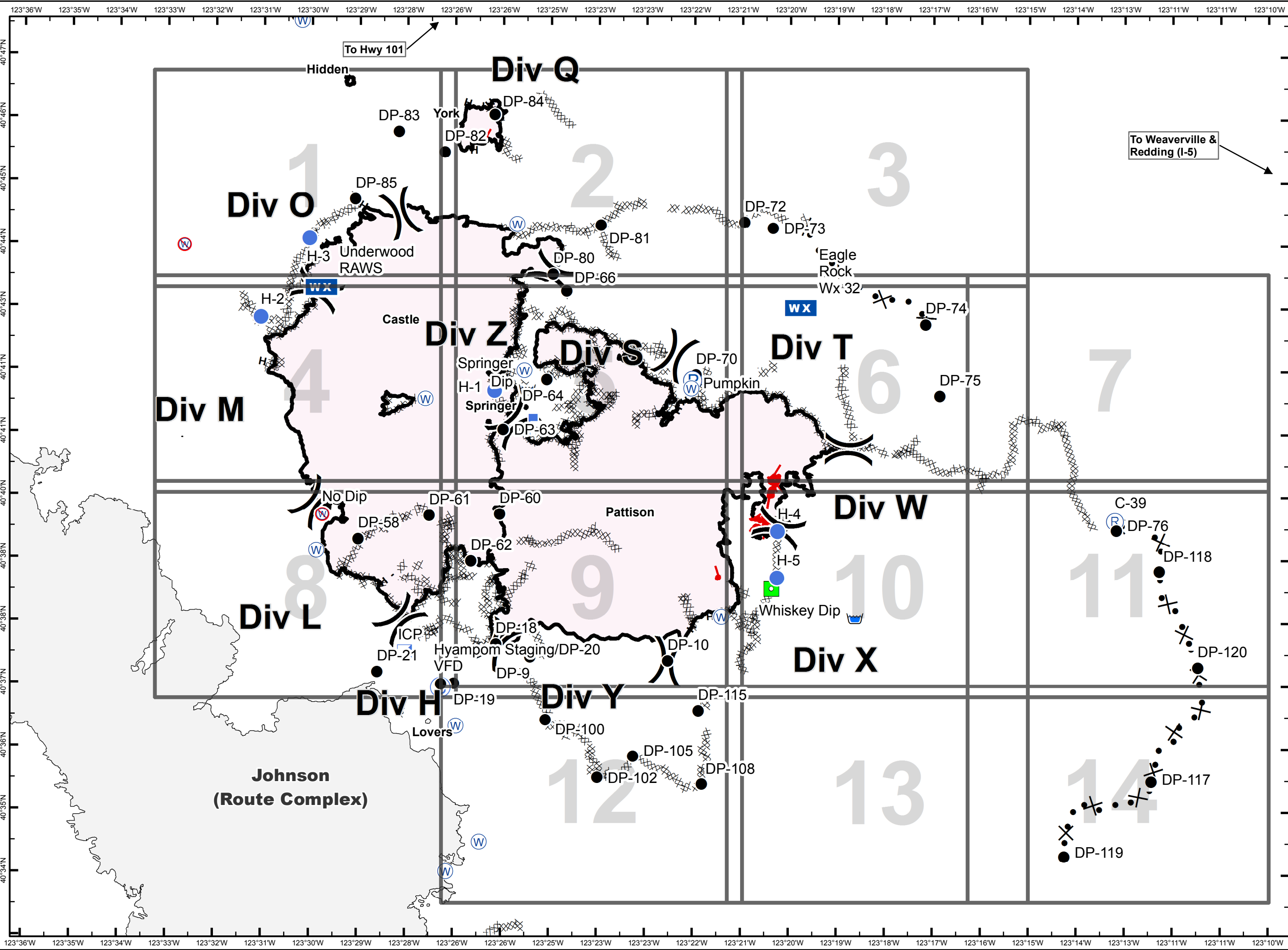
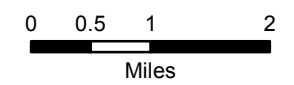
29,416 acres as of  
9/9/2015 @ 0230 hrs



- ( ) Division Break
- Uncontrolled Fire Edge
- Contained Fire Edge
- H - H - Hand Line
- Completed Dozer Line
- Proposed Dozer Line
- Incident Command Post
- Drop Point
- Staging Area
- Repeater
- Helispot
- Dip Site
- Water Source
- Restricted Water Source
- Equipment Location



UTM 10 NAD 83









# South Complex CA-SHF-002108

Sept. 11, 2015



( ) Division Break

┌ Uncontrolled Fire Edge

▬ Contained Fire Edge

H - H Hand Line

XXXXX Completed Dozer Line

X• Proposed Dozer Line

▣ ICP

● Drop Point

Ⓢ Staging Area

Ⓡ Repeater

● Helispot

Ⓛ Dip Site

Ⓦ Water Source

Ⓦ Restr. Water Source

Ⓟ Pump

Ⓦx Mobile Weather Unit

┌ Lookout

■ Equipment Location

▭ Nat'l Forest Boundary

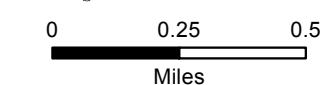
▭ Wilderness

▭ Wild and Scenic River

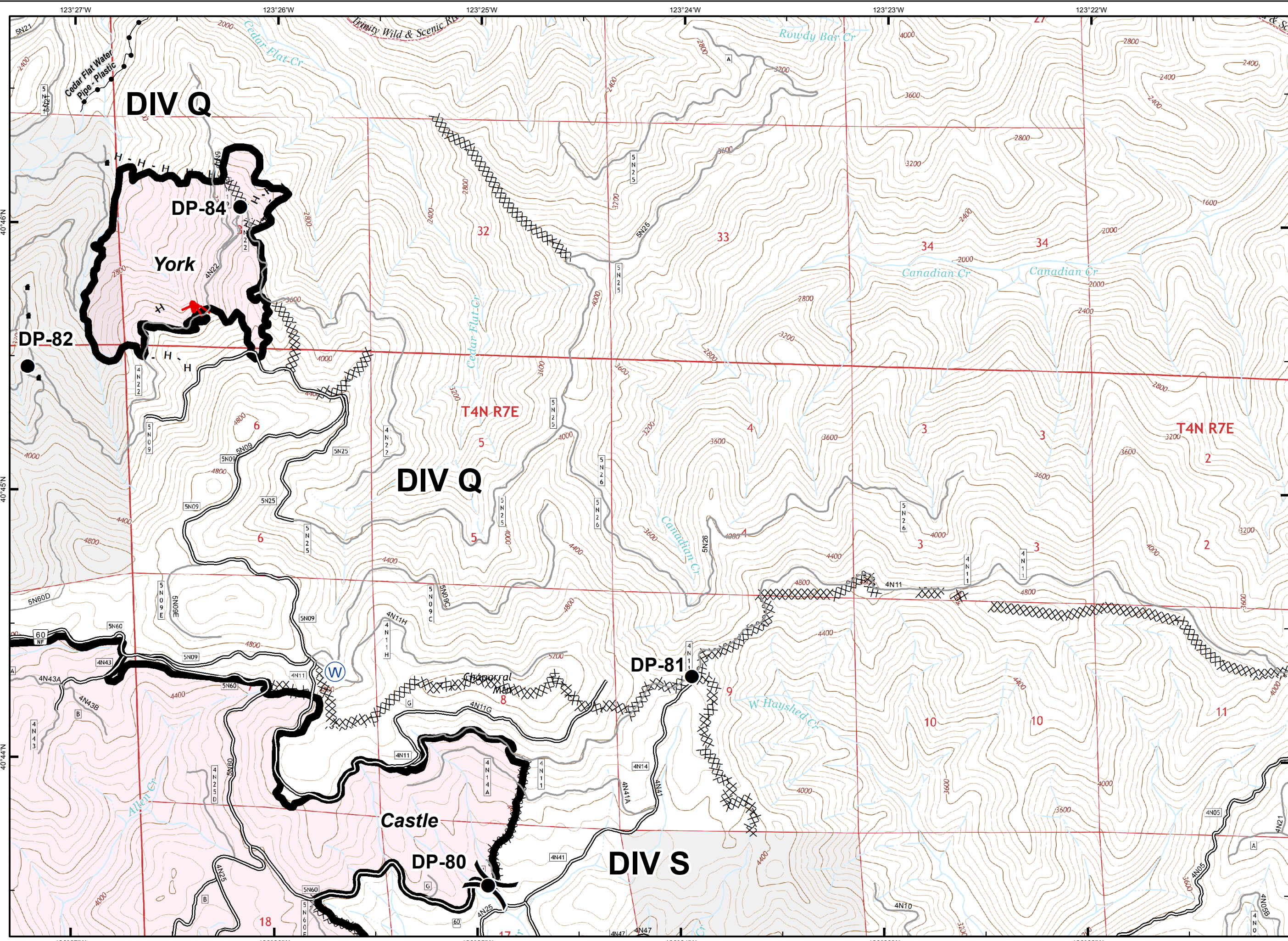
▭ Non-USFS Land



UTM 10 NAD 83



1	2	3	
4	5	6	7
8	9	10	11
	12	13	14





# South Complex CA-SHF-002108

Sept. 11, 2015



( ) Division Break

┌ Uncontrolled Fire Edge

▬ Contained Fire Edge

H - H Hand Line

XXXXX Completed Dozer Line

⊗ Proposed Dozer Line

▣ ICP

● Drop Point

⊙ Staging Area

⊕ Repeater

● Helispot

⊙ Dip Site

⊙ Water Source

⊙ Restr. Water Source

⊙ Pump

⊙ Mobile Weather Unit

⊙ Lookout

■ Equipment Location

▭ Nat'l Forest Boundary

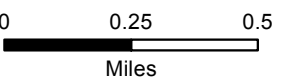
▭ Wilderness

▭ Wild and Scenic River

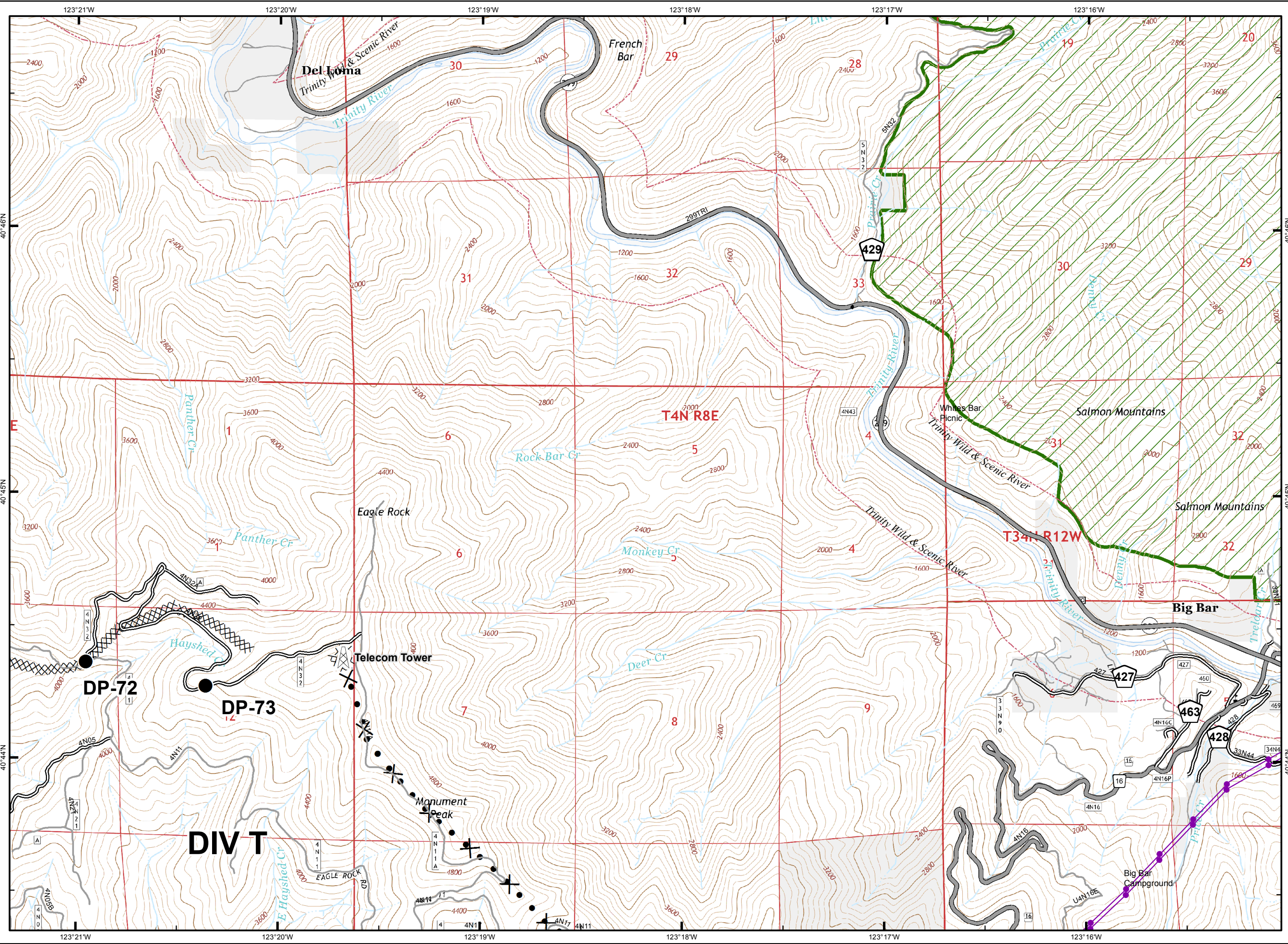
▭ Non-USFS Land



UTM 10 NAD 83



1	2	<b>3</b>	
4	5	6	7
8	9	10	11
	12	13	14



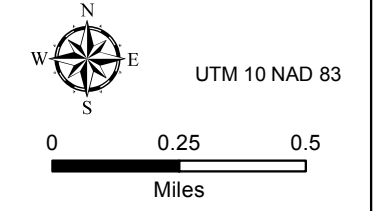


# South Complex CA-SHF-002108

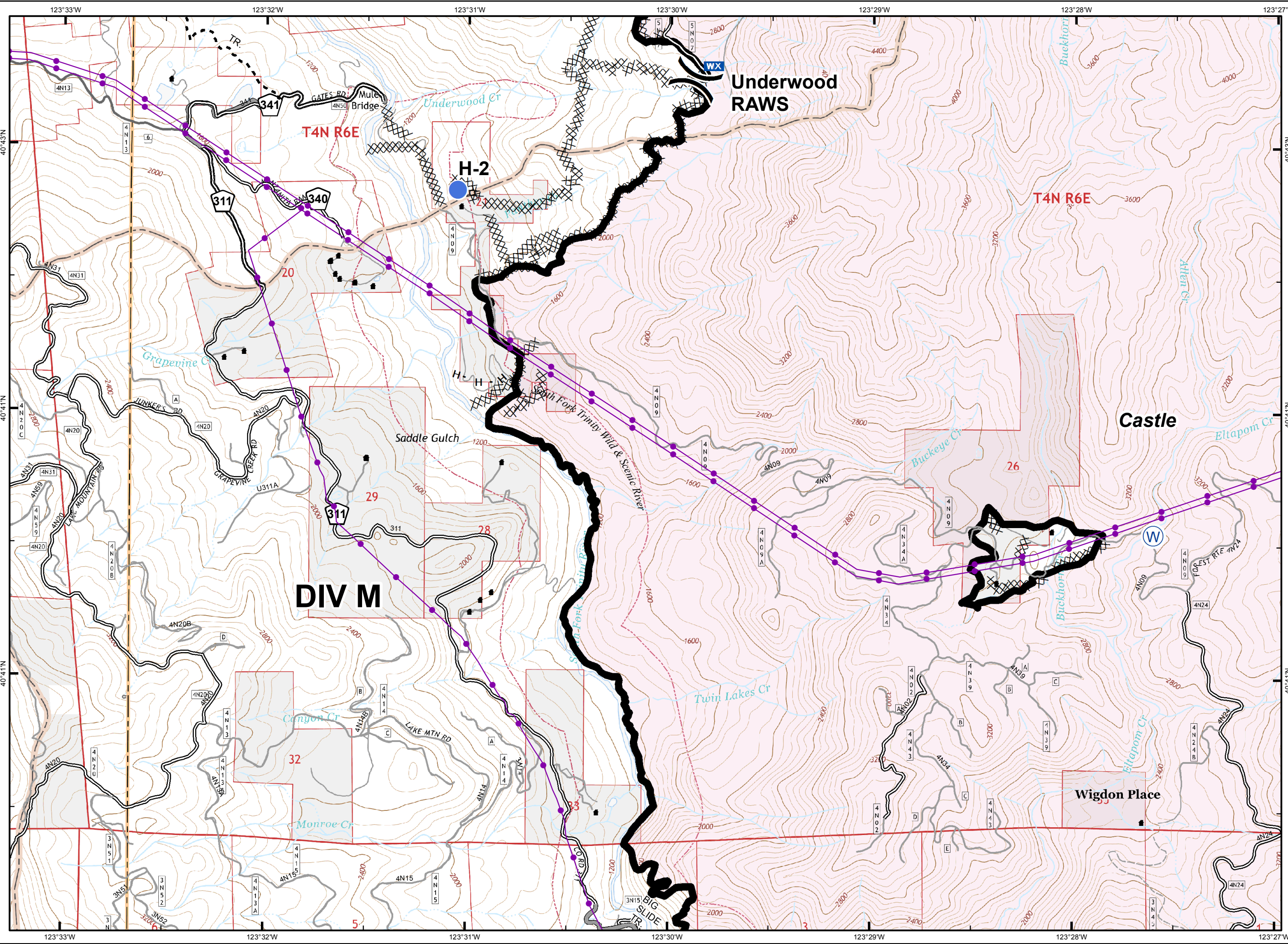
Sept. 11, 2015



- ( ) Division Break
- └ Uncontrolled Fire Edge
- Contained Fire Edge
- H - H Hand Line
- XXXXX Completed Dozer Line
- X• Proposed Dozer Line
- ICP ICP
- Drop Point
- S Staging Area
- R Repeater
- Helispot
- D Dip Site
- W Water Source
- W Restr. Water Source
- P Pump
- Mobile Weather Unit
- L Lookout
- Equipment Location
- Nat'l Forest Boundary
- Wilderness
- Wild and Scenic River
- Non-USFS Land



1	2	3	
4	5	6	7
8	9	10	11
	12	13	14



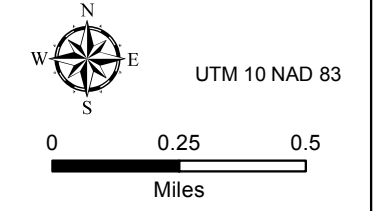


# South Complex CA-SHF-002108

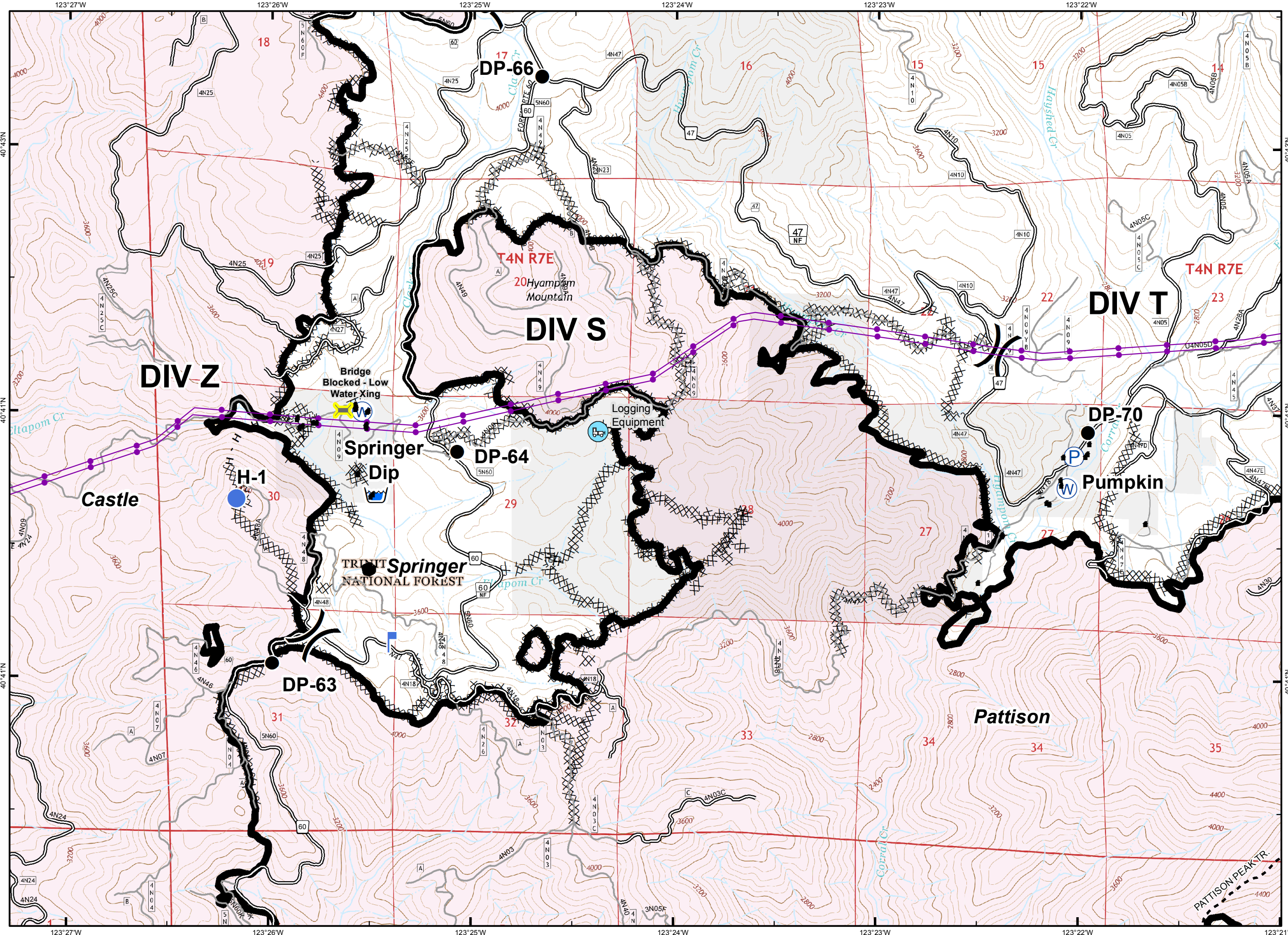
Sept. 11, 2015



- ( ) Division Break
- ┌ Uncontrolled Fire Edge
- ▬ Contained Fire Edge
- H - H Hand Line
- XXXXX Completed Dozer Line
- X•• Proposed Dozer Line
- ▣ ICP
- Drop Point
- Ⓢ Staging Area
- Ⓡ Repeater
- Ⓟ Helispot
- Ⓛ Dip Site
- Ⓦ Water Source
- Ⓦ Restr. Water Source
- Ⓟ Pump
- Ⓦx Mobile Weather Unit
- Ⓛ Lookout
- Equipment Location
- ▭ Nat'l Forest Boundary
- ▭ Wilderness
- ▭ Wild and Scenic River
- ▭ Non-USFS Land



1	2	3
4	5	6
8	9	10
	12	13
		14





# South Complex CA-SHF-002108

Sept. 11, 2015



( ) Division Break

┌ Uncontrolled Fire Edge

▬ Contained Fire Edge

H - H Hand Line

XXXXX Completed Dozer Line

X• Proposed Dozer Line

▣ ICP

● Drop Point

⊙ Staging Area

Ⓡ Repeater

● Helispot

Ⓢ Dip Site

Ⓦ Water Source

Ⓦ Restr. Water Source

Ⓟ Pump

WX Mobile Weather Unit

┌ Lookout

■ Equipment Location

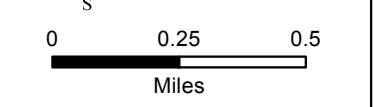
▭ Nat'l Forest Boundary

▭ Wilderness

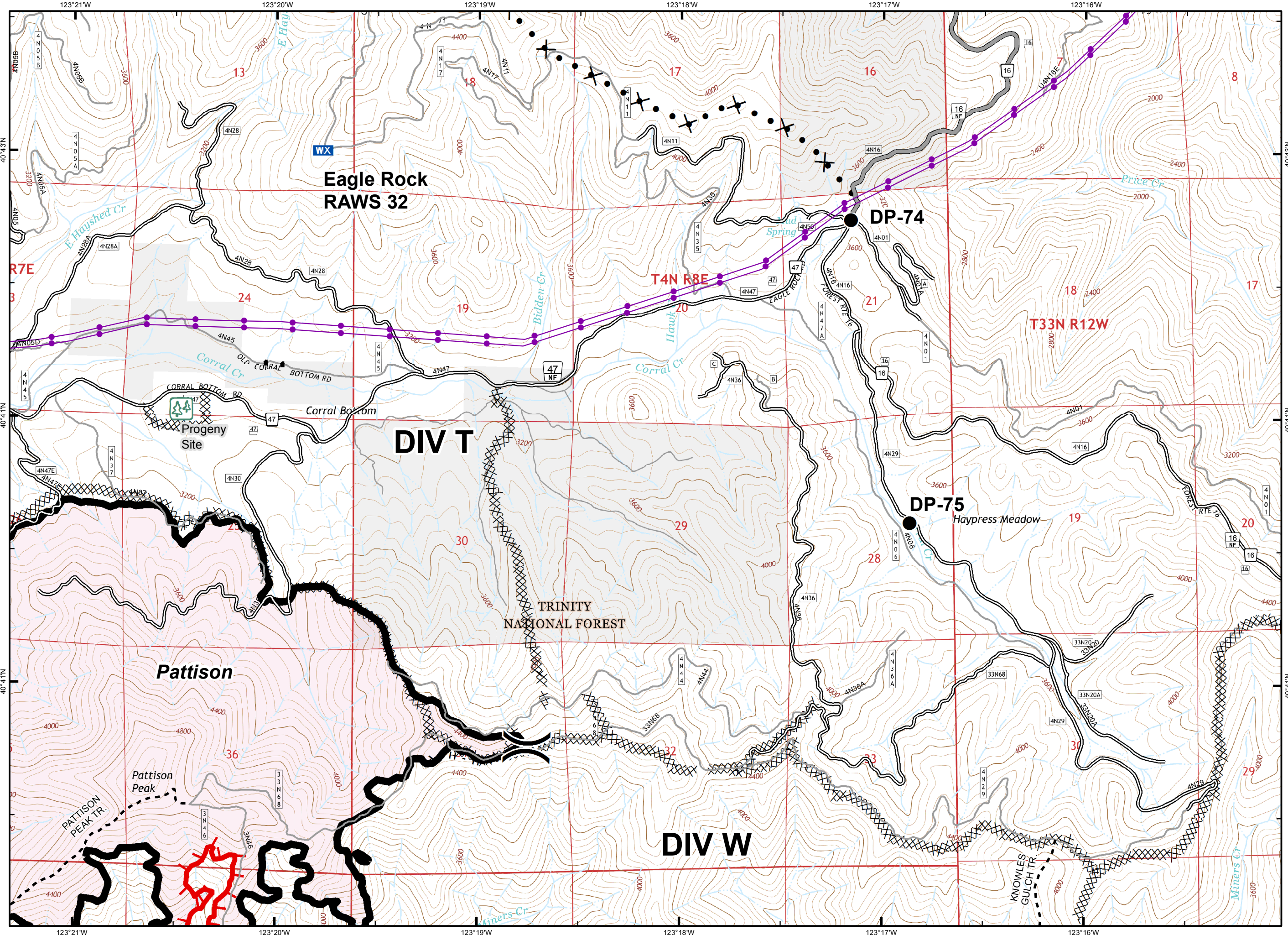
▭ Wild and Scenic River

▭ Non-USFS Land

UTM 10 NAD 83



1	2	3
4	5	6
8	9	10
	12	13
		14





# South Complex CA-SHF-002108

Sept. 11, 2015



( ) Division Break

┌ Uncontrolled Fire Edge

▬ Contained Fire Edge

H - H Hand Line

XXXXX Completed Dozer Line

⊗ Proposed Dozer Line

▣ ICP

● Drop Point

⊙ Staging Area

Ⓡ Repeater

● Helispot

Ⓢ Dip Site

Ⓦ Water Source

Ⓦ Restr. Water Source

Ⓟ Pump

Ⓜwx Mobile Weather Unit

Ⓛ Lookout

■ Equipment Location

▭ Nat'l Forest Boundary

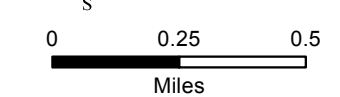
▭ Wilderness

▭ Wild and Scenic River

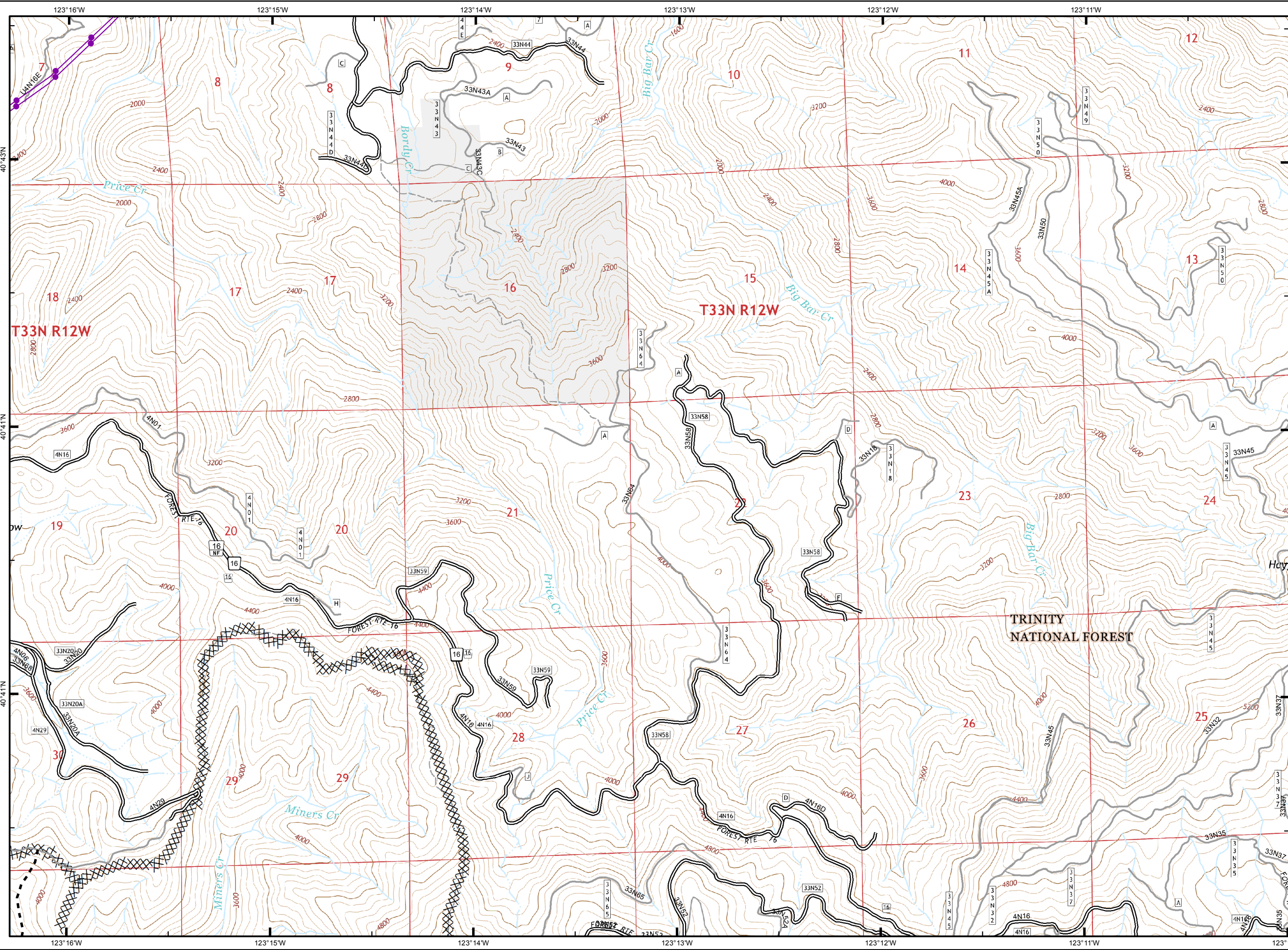
▭ Non-USFS Land



UTM 10 NAD 83



1	2	3	
4	5	6	7
8	9	10	11
	12	13	14



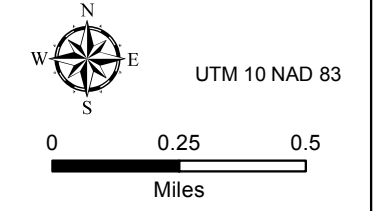


# South Complex CA-SHF-002108

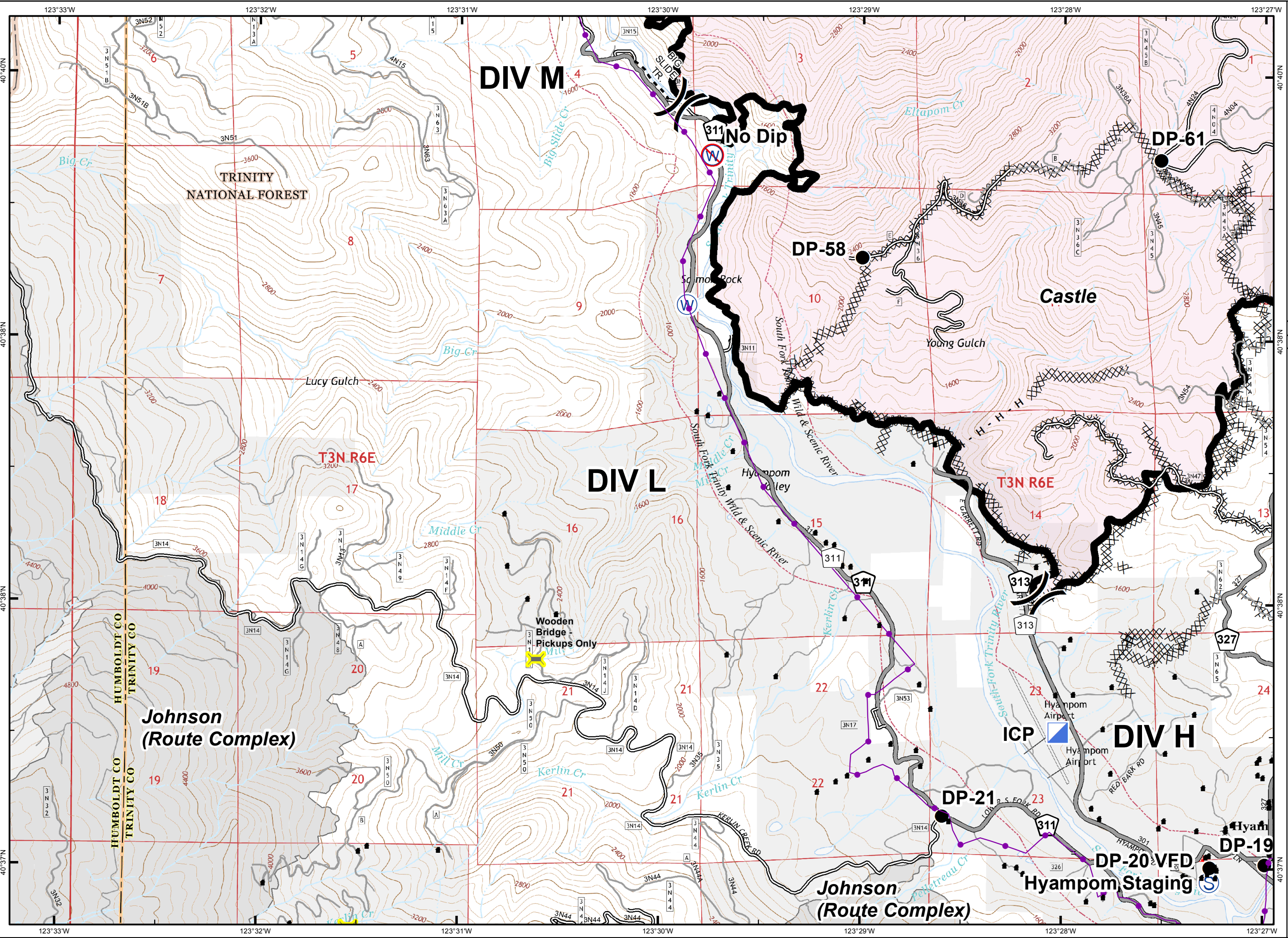
Sept. 11, 2015



- ( ) Division Break
- Uncontrolled Fire Edge
- Contained Fire Edge
- H - H - Hand Line
- XXXXX Completed Dozer Line
- X • Proposed Dozer Line
- ▣ ICP
- Drop Point
- Ⓢ Staging Area
- Ⓡ Repeater
- Helispot
- Ⓜ Dip Site
- Ⓦ Water Source
- Ⓦ Restr. Water Source
- Ⓟ Pump
- Ⓜ Mobile Weather Unit
- Ⓛ Lookout
- Equipment Location
- ▭ Nat'l Forest Boundary
- ▭ Wilderness
- ▭ Wild and Scenic River
- ▭ Non-USFS Land



1	2	3	
4	5	6	7
8	9	10	11
	12	13	14



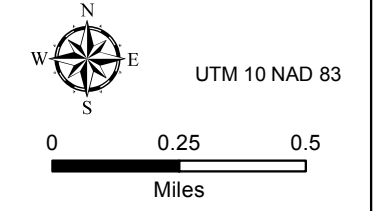


# South Complex CA-SHF-002108

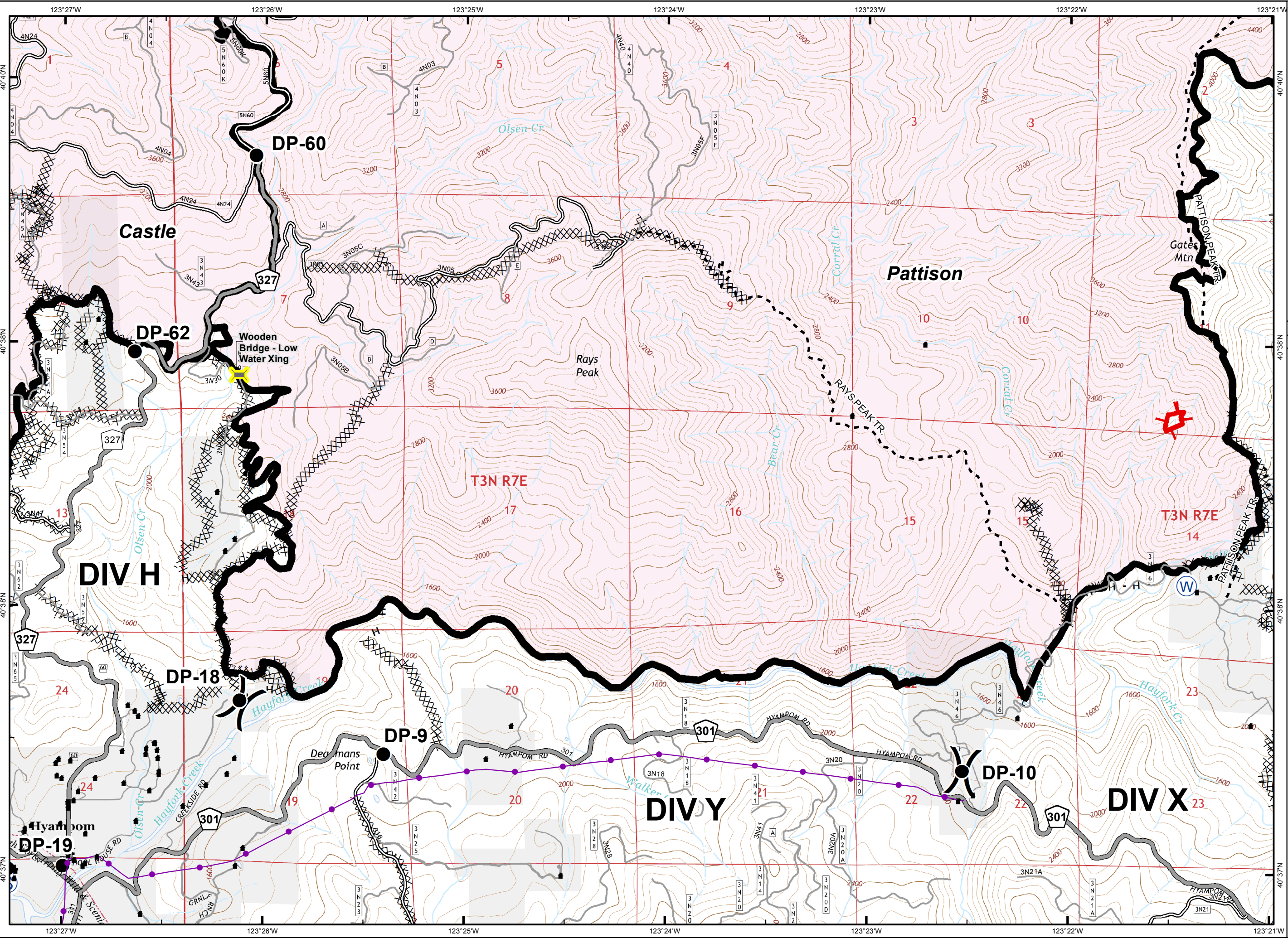
Sept. 11, 2015



- ( ) Division Break
- ┌ Uncontrolled Fire Edge
- ▬ Contained Fire Edge
- H - H Hand Line
- XXXXX Completed Dozer Line
- ⊗ Proposed Dozer Line
- ▣ ICP
- Drop Point
- ⊙ Staging Area
- Ⓡ Repeater
- Ⓡ Helispot
- Ⓡ Dip Site
- Ⓡ Water Source
- Ⓡ Restr. Water Source
- Ⓡ Pump
- Ⓡ Mobile Weather Unit
- Ⓡ Lookout
- Equipment Location
- ▭ Nat'l Forest Boundary
- ▭ Wilderness
- ▭ Wild and Scenic River
- ▭ Non-USFS Land



1	2	3	
4	5	6	7
8	9	10	11
	12	13	14



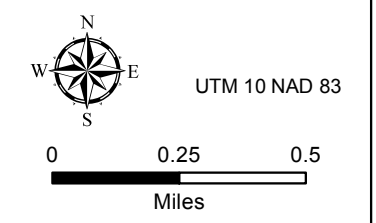


# South Complex CA-SHF-002108

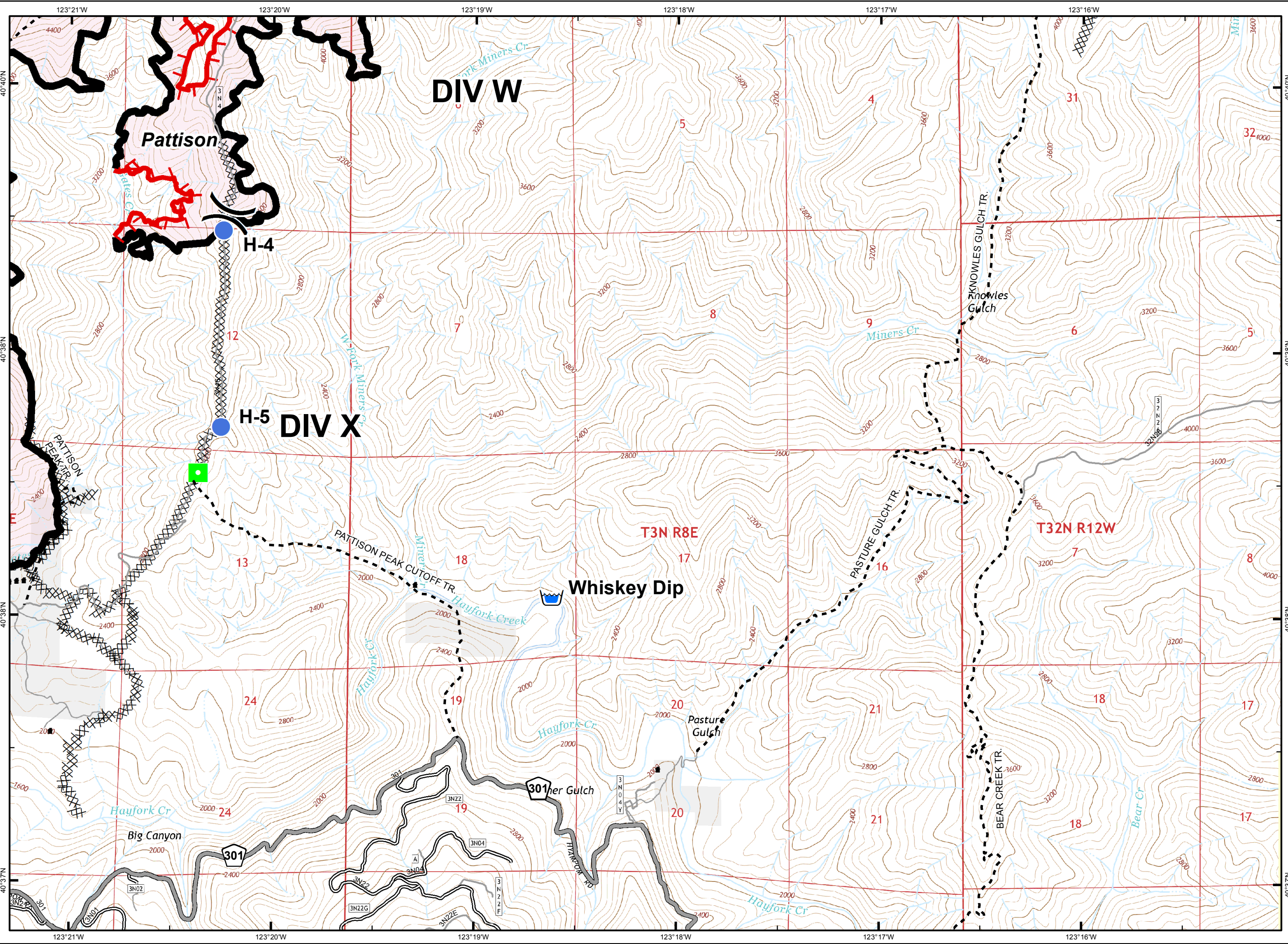
Sept. 11, 2015



- ( ) Division Break
- └ Uncontrolled Fire Edge
- Contained Fire Edge
- H - H Hand Line
- XXXXX Completed Dozer Line
- ⊗ Proposed Dozer Line
- ▣ ICP
- Drop Point
- Ⓢ Staging Area
- Ⓡ Repeater
- Helispot
- Ⓛ Dip Site
- Ⓦ Water Source
- Ⓦ (with slash) Restr. Water Source
- Ⓟ Pump
- Ⓦx Mobile Weather Unit
- Ⓛ Lookout
- Equipment Location
- ▭ Nat'l Forest Boundary
- ▭ Wilderness
- ▭ Wild and Scenic River
- ▭ Non-USFS Land



1	2	3	
4	5	6	7
8	9	10	11
	12	13	14



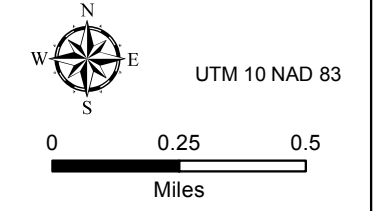


# South Complex CA-SHF-002108

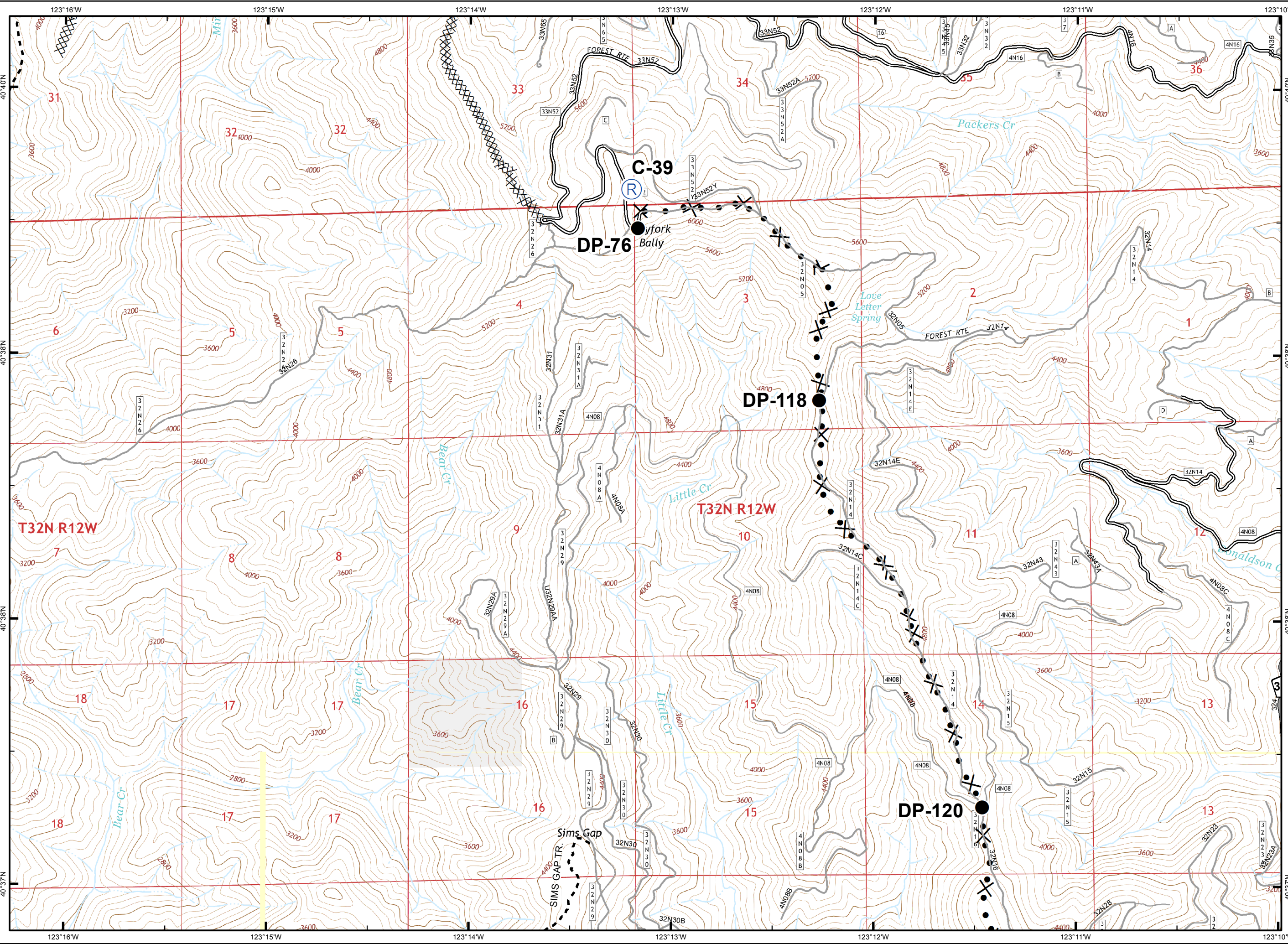
Sept. 11, 2015



- Division Break
- Uncontrolled Fire Edge
- Contained Fire Edge
- Hand Line
- Completed Dozer Line
- Proposed Dozer Line
- ICP
- Drop Point
- Staging Area
- Repeater
- Helispot
- Dip Site
- Water Source
- Restr. Water Source
- Pump
- Mobile Weather Unit
- Lookout
- Equipment Location
- Nat'l Forest Boundary
- Wilderness
- Wild and Scenic River
- Non-USFS Land



1	2	3	
4	5	6	7
8	9	10	11
	12	13	14



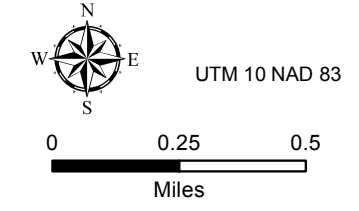


# South Complex CA-SHF-002108

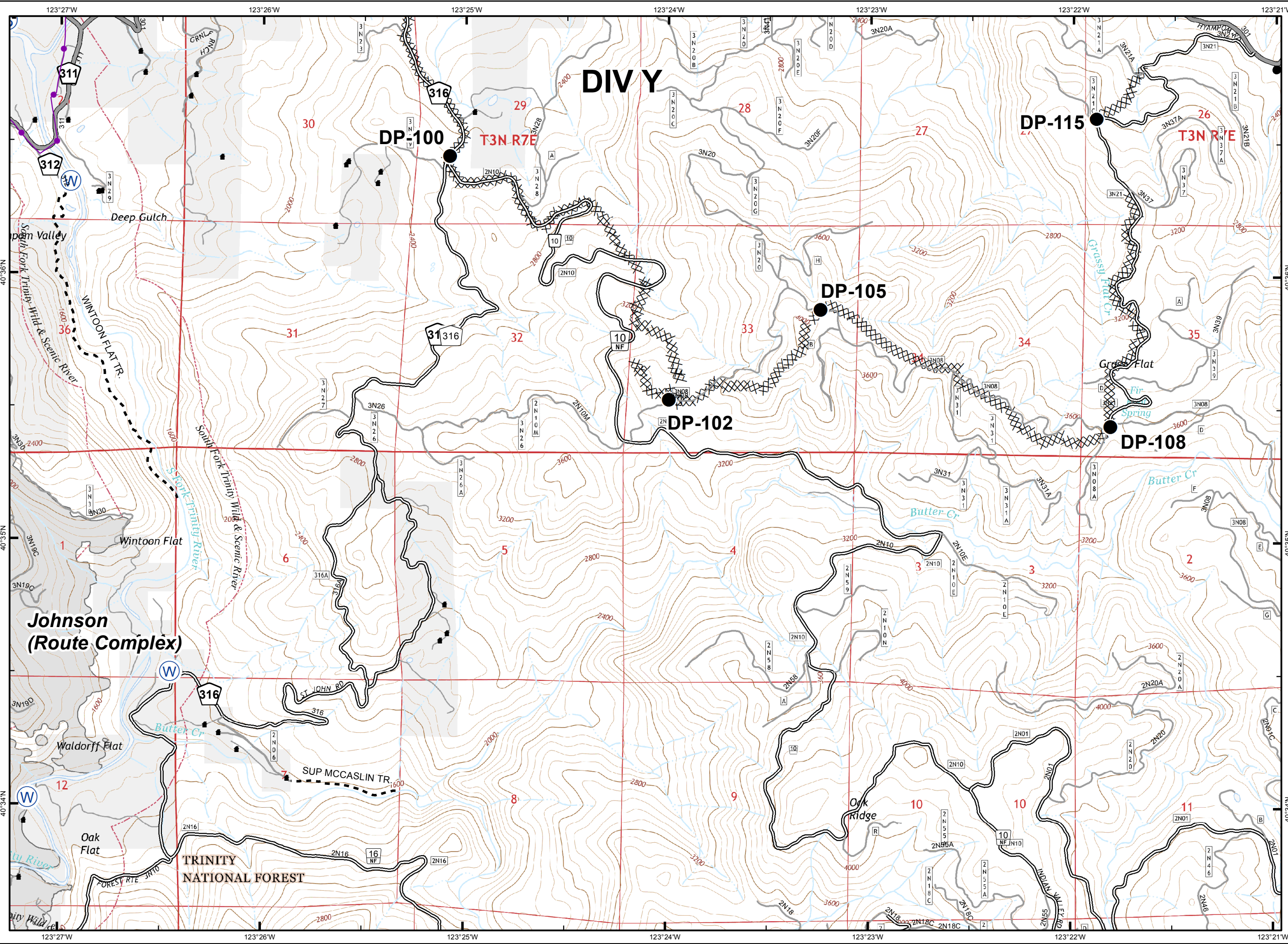
Sept. 11, 2015



- Division Break
- Uncontrolled Fire Edge
- Contained Fire Edge
- H - H - Hand Line
- Completed Dozer Line
- Proposed Dozer Line
- ICP
- Drop Point
- Staging Area
- Repeater
- Helispot
- Dip Site
- Water Source
- Restr. Water Source
- Pump
- Mobile Weather Unit
- Lookout
- Equipment Location
- Nat'l Forest Boundary
- Wilderness
- Wild and Scenic River
- Non-USFS Land



1	2	3	
4	5	6	7
8	9	10	11
	12	13	14



## DIV Y

DP-100

T3N R7E

DP-105

DP-102

DP-108

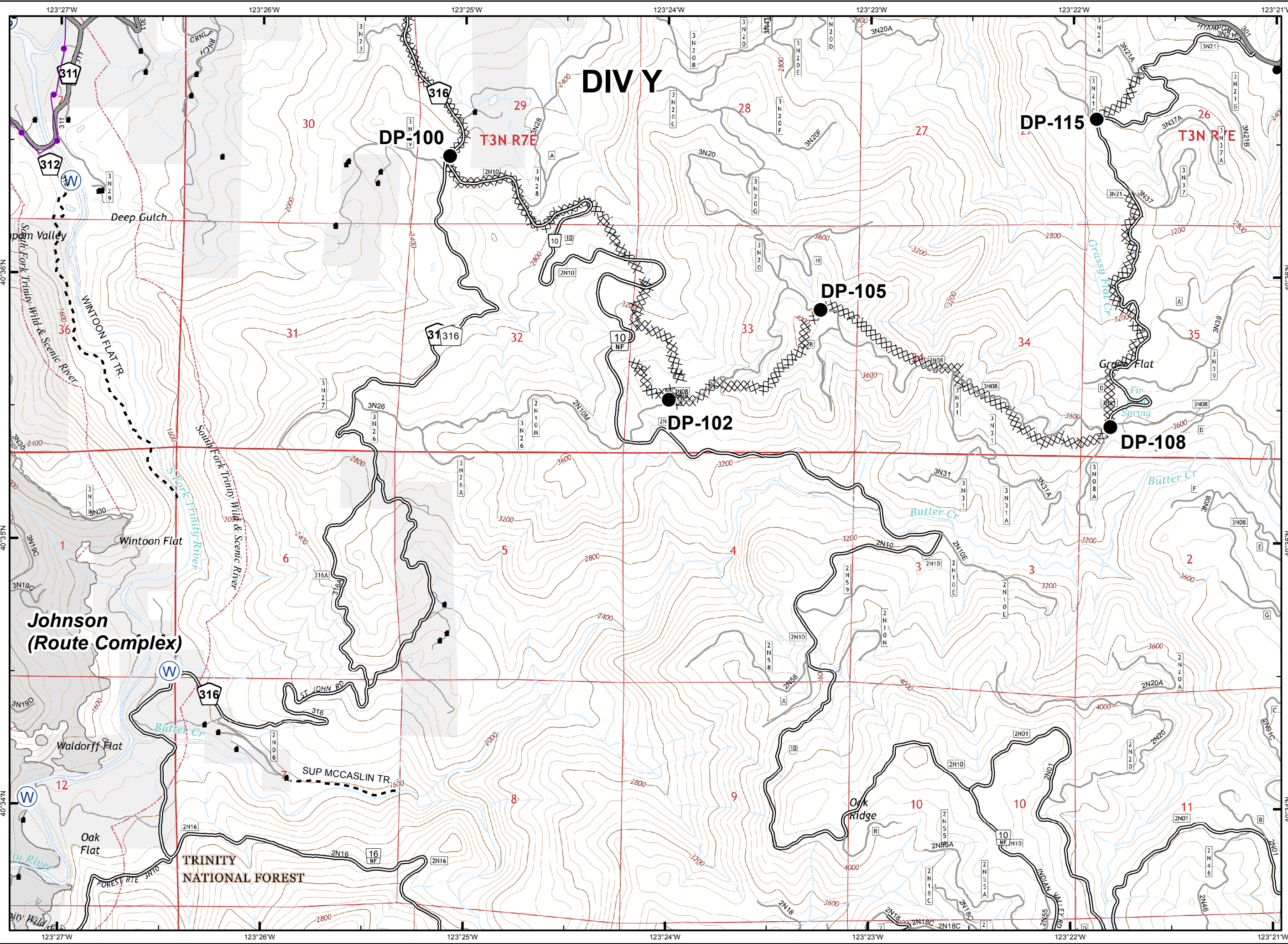
DP-115

T3N R8E

Johnson  
(Route Complex)

TRINITY  
NATIONAL FOREST

DIV Y





# South Complex CA-SHF-002108

Sept. 11, 2015



( ) Division Break

┌ Uncontrolled Fire Edge

▬ Contained Fire Edge

H - H Hand Line

XXXXX Completed Dozer Line

⊗ Proposed Dozer Line

▣ ICP

● Drop Point

Ⓢ Staging Area

Ⓡ Repeater

● Helispot

Ⓜ Dip Site

Ⓦ Water Source

Ⓦ Restr. Water Source

Ⓟ Pump

Ⓜwx Mobile Weather Unit

Ⓛ Lookout

■ Equipment Location

▭ Nat'l Forest Boundary

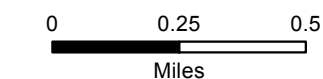
▭ Wilderness

▭ Wild and Scenic River

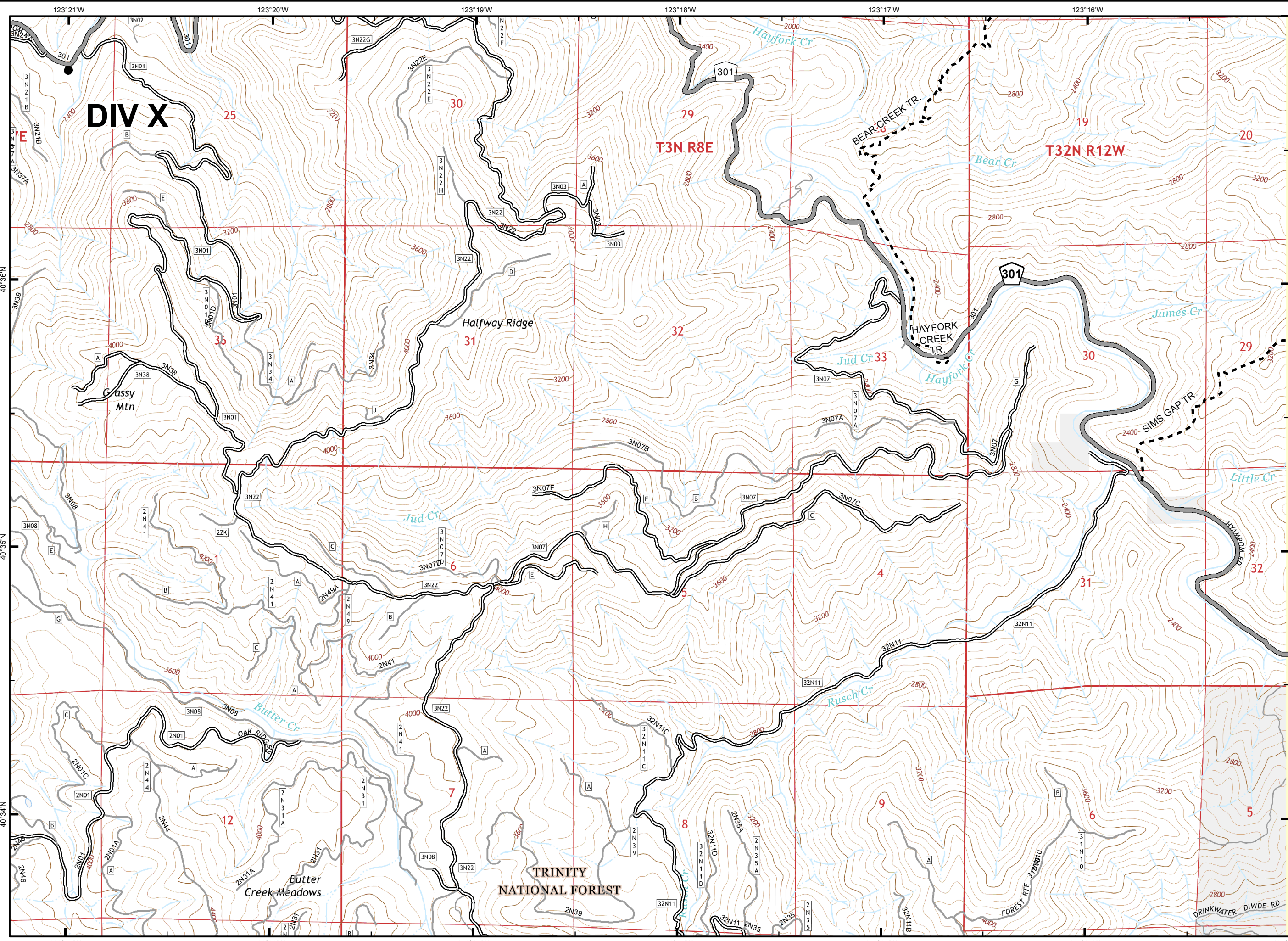
▭ Non-USFS Land



UTM 10 NAD 83



1	2	3	
4	5	6	7
8	9	10	11
	12	13	14





# South Complex CA-SHF-002108

Sept. 11, 2015



(X) Division Break

┌ Uncontrolled Fire Edge

▬ Contained Fire Edge

H - H Hand Line

XXXXX Completed Dozer Line

X• Proposed Dozer Line

▣ ICP

● Drop Point

⊙ Staging Area

Ⓡ Repeater

● Helispot

Ⓛ Dip Site

Ⓦ Water Source

Ⓦ Restr. Water Source

Ⓟ Pump

Ⓦx Mobile Weather Unit

┌ Lookout

■ Equipment Location

▭ Nat'l Forest Boundary

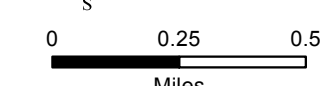
▭ Wilderness

▭ Wild and Scenic River

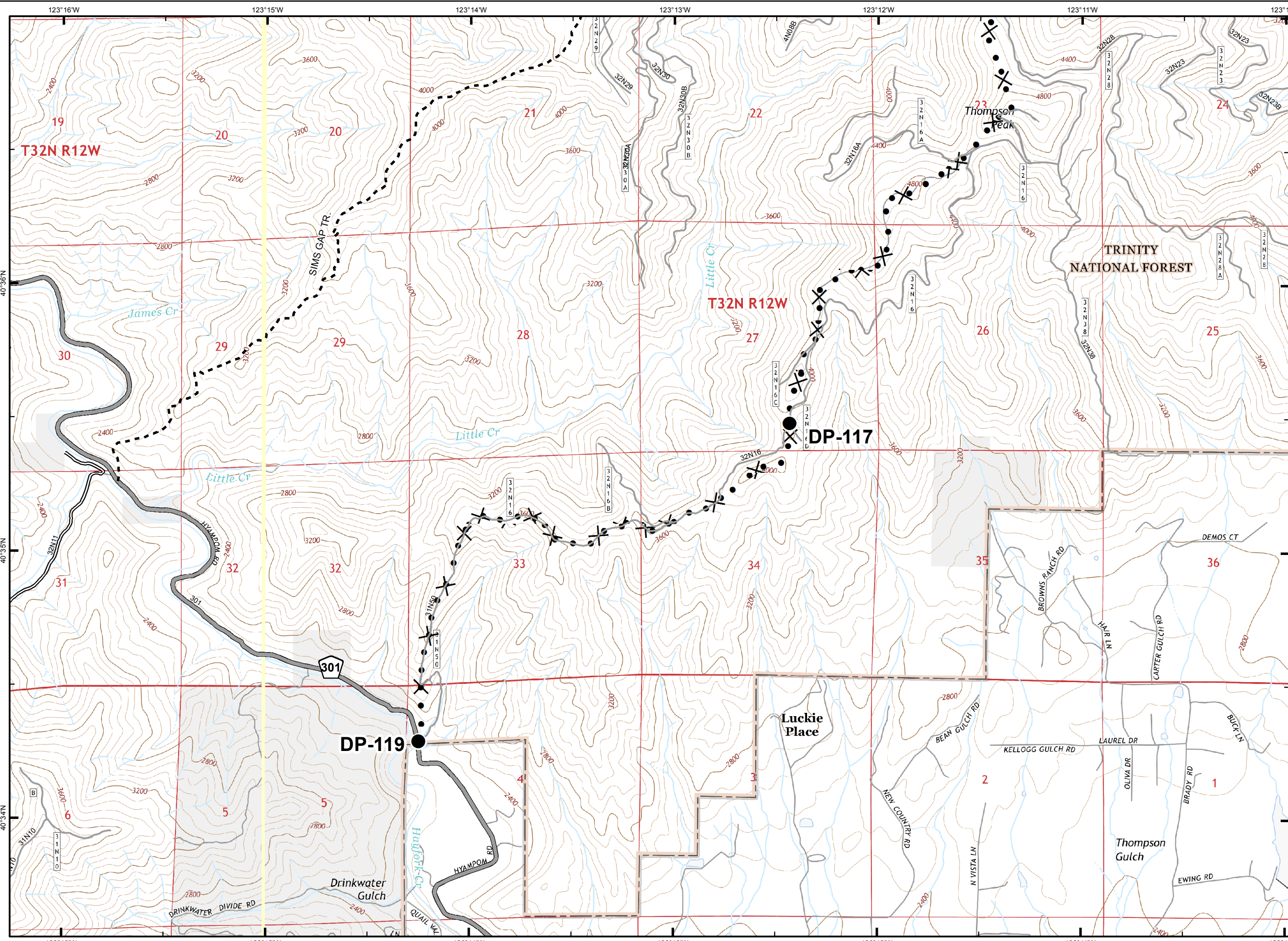
▭ Non-USFS Land



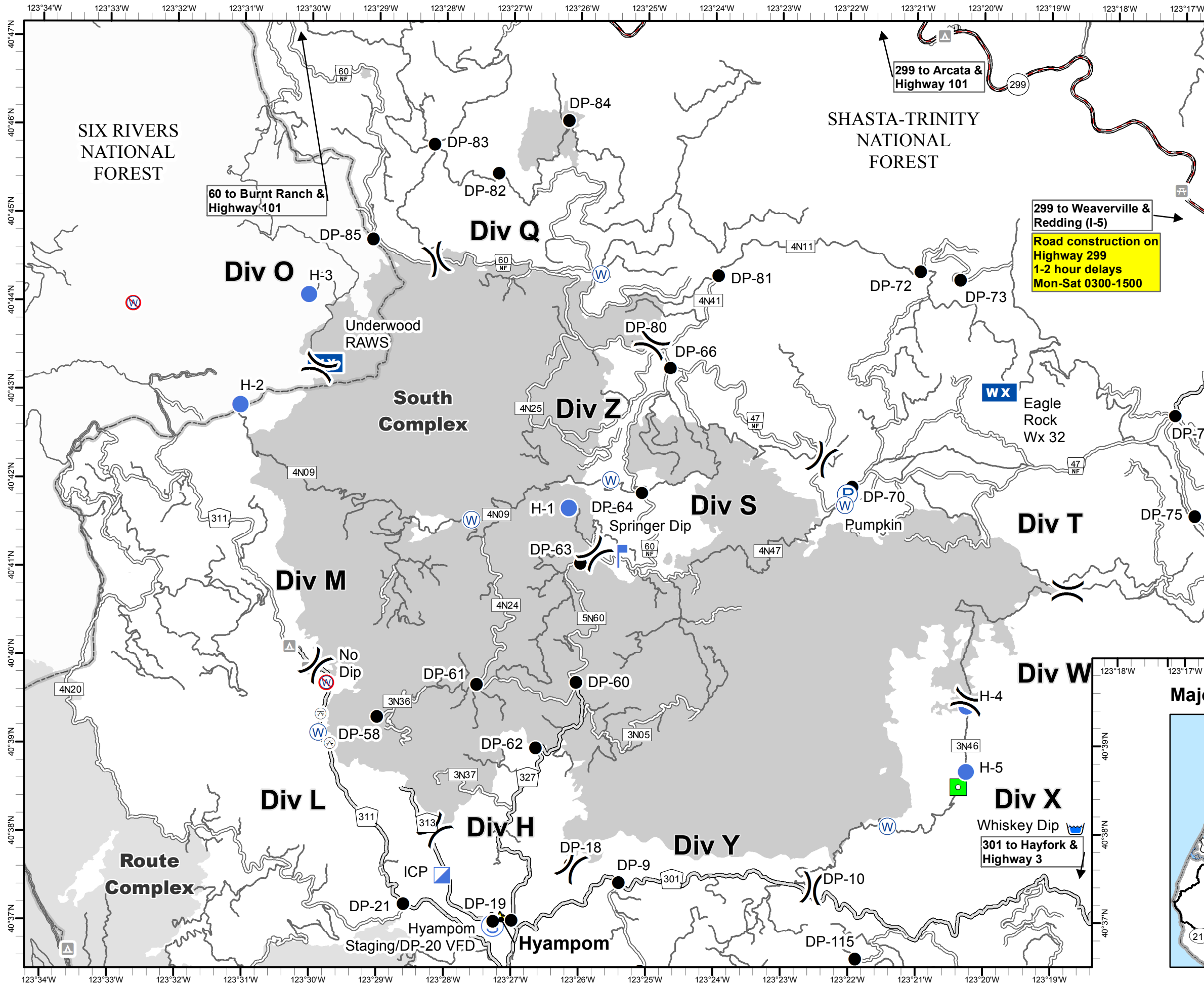
UTM 10 NAD 83



1	2	3	
4	5	6	7
8	9	10	11
	12	13	14







# South Complex

CA-SHF-002108

September 11, 2015  
Day



## Transportation Map

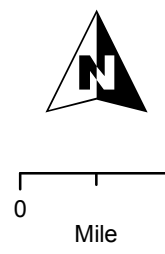
- Highway
- Paved
- Surfaced
- Native
- Forest Boundary
- Assignment Break
- Dip Site
- Drop Point
- Helispot
- Incident Command Post
- Lookout
- Mobile Weather Unit
- Pump
- Staging Area
- Water Source
- Restricted Water Source
- Equipment Location

299 to Weaverville & Redding (I-5)  
**Road construction on Highway 299**  
1-2 hour delays  
Mon-Sat 0300-1500

299 to Arcata & Highway 101

60 to Burnt Ranch & Highway 101

301 to Hayfork & Highway 3



### Major Roads - Northern California

