

# South Complex

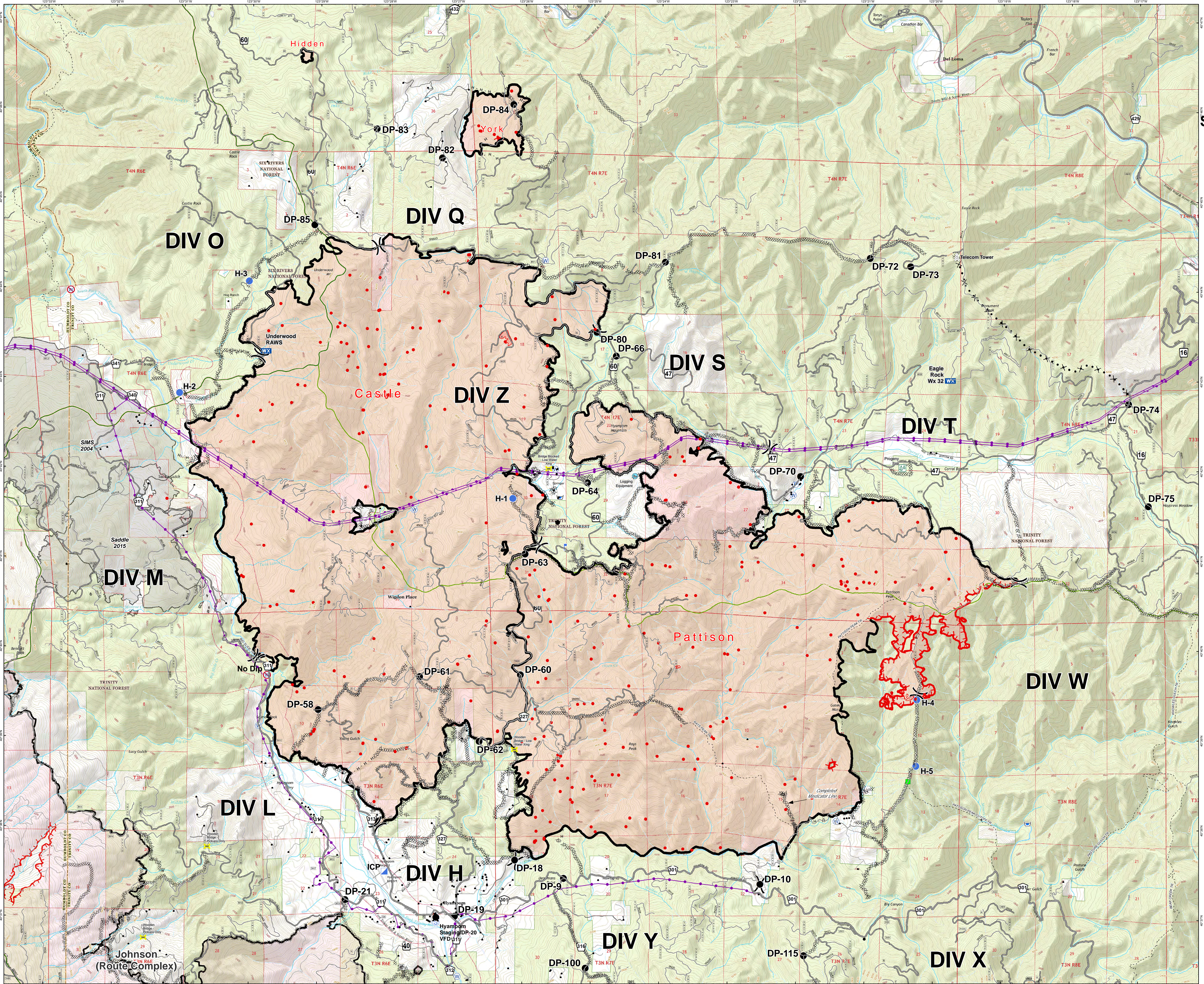
## SHF-002108

September 10, 2015

29,416 acres.

IR Flight 09/9/15 @ 0230

### Operations IR Map



- Uncontrolled Fire Edge
- Completed Dozer Line
- Completed Line
- Hand Line
- Proposed Dozer Line
- Division
- Dip Site
- Drop Point
- Helispot
- Incident Command Post
- Lookout
- Mobile Weather Unit
- Pump
- Staging Area
- Water Source
- Restricted Water Source
- Equipment Location
- Transmission Line
- Structure
- Wild and Scenic River
- Forest Boundary
- Ranger District Boundary
- Isolated Heat
- Scattered Heat
- Intense Heat

