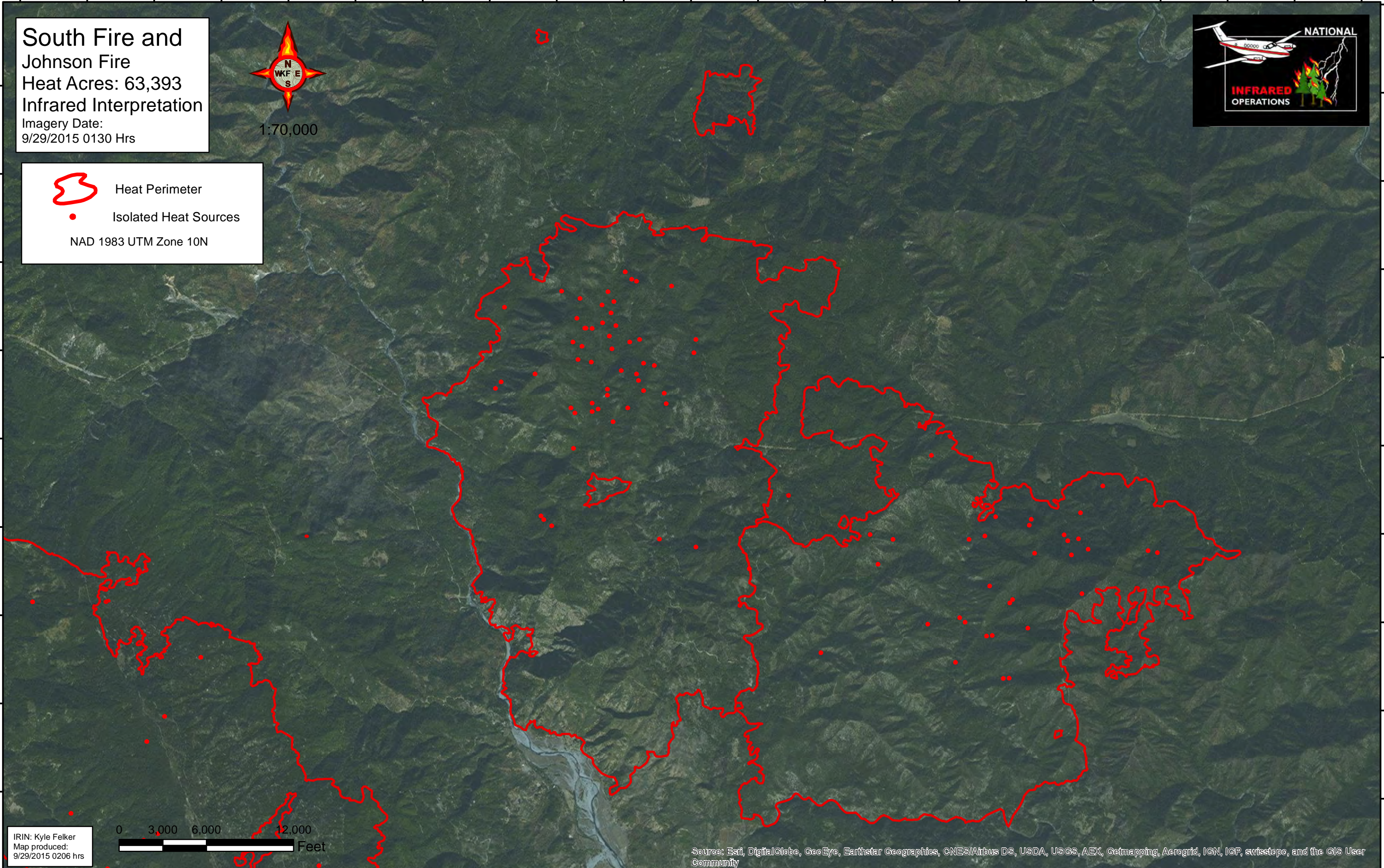




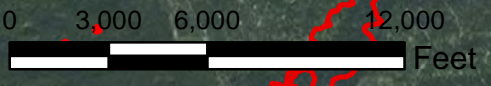
123°37'W 123°36'W 123°35'W 123°34'W 123°33'W 123°32'W 123°31'W 123°30'W 123°29'W 123°28'W 123°27'W 123°26'W 123°25'W 123°24'W 123°23'W 123°22'W 123°21'W 123°20'W 123°19'W 123°18'W 123°17'W



South Fire and Johnson Fire
Heat Acres: 63,393
Infrared Interpretation
Imagery Date:
9/29/2015 0130 Hrs



 Heat Perimeter
 Isolated Heat Sources
NAD 1983 UTM Zone 10N



IRIN: Kyle Felker
Map produced:
9/29/2015 0206 hrs

Source: Esri, DigitalGlobe, GeoEye, Earthstar Geographics, CNES/Airbus DS, USDA, USGS, AEX, Getmapping, Aerogrid, IGN, IGP, swisstopo, and the GIS User Community

123°37'W 123°36'W 123°35'W 123°34'W 123°33'W 123°32'W 123°31'W 123°30'W 123°29'W 123°28'W 123°27'W 123°26'W 123°25'W 123°24'W 123°23'W 123°22'W 123°21'W 123°20'W 123°19'W 123°18'W 123°17'W

40°46'N
40°45'N
40°44'N
40°43'N
40°42'N
40°41'N
40°40'N
40°39'N
40°38'N

40°47'N
40°46'N
40°45'N
40°44'N
40°43'N
40°42'N
40°41'N
40°40'N
40°39'N
40°38'N