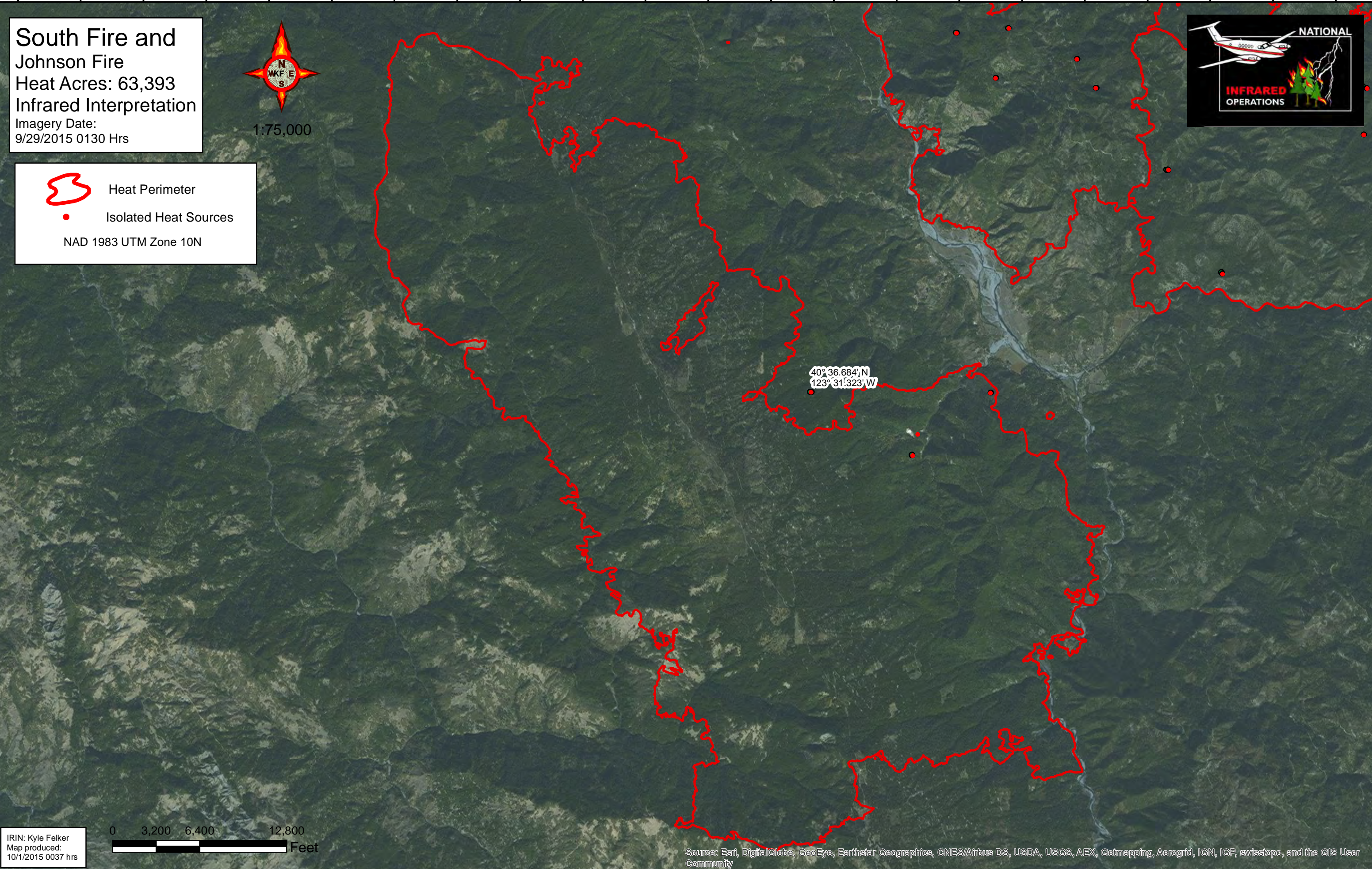




123°44'W 123°43'W 123°42'W 123°41'W 123°40'W 123°39'W 123°38'W 123°37'W 123°36'W 123°35'W 123°34'W 123°33'W 123°32'W 123°31'W 123°30'W 123°29'W 123°28'W 123°27'W 123°26'W 123°25'W 123°24'W 123°23'W



South Fire and Johnson Fire
Heat Acres: 63,393
Infrared Interpretation
Imagery Date:
9/29/2015 0130 Hrs



 Heat Perimeter
 Isolated Heat Sources
NAD 1983 UTM Zone 10N

40°36.684'N
123°31.323'W

IRIN: Kyle Felker
Map produced:
10/1/2015 0037 hrs

0 3,200 6,400 12,800 Feet

Source: Esri, DigitalGlobe, GeoEye, Earthstar Geographics, CNES/Airbus DS, USDA, USGS, AEX, Getmapping, Aerogrid, IGN, IGP, swisstopo, and the GIS User Community

123°44'W 123°43'W 123°42'W 123°41'W 123°40'W 123°39'W 123°38'W 123°37'W 123°36'W 123°35'W 123°34'W 123°33'W 123°32'W 123°31'W 123°30'W 123°29'W 123°28'W 123°27'W 123°26'W 123°25'W 123°24'W 123°23'W

40°41'N
40°40'N
40°39'N
40°38'N
40°37'N
40°36'N
40°35'N
40°34'N
40°33'N
40°32'N
40°31'N

40°41'N
40°40'N
40°39'N
40°38'N
40°37'N
40°36'N
40°35'N
40°34'N
40°33'N
40°32'N
40°31'N