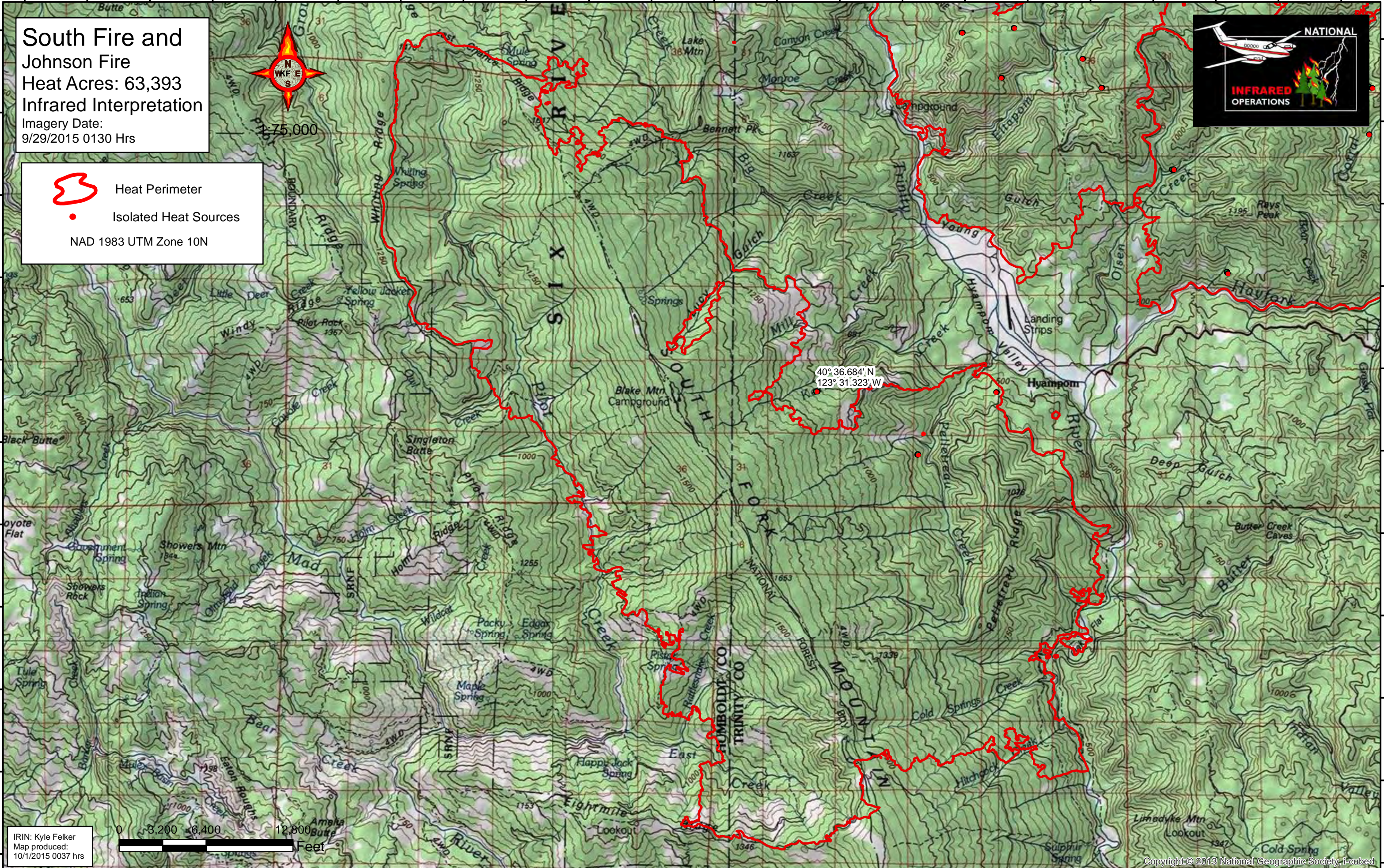


123°44'W 123°43'W 123°42'W 123°41'W 123°40'W 123°39'W 123°38'W 123°37'W 123°36'W 123°35'W 123°34'W 123°33'W 123°32'W 123°31'W 123°30'W 123°29'W 123°28'W 123°27'W 123°26'W 123°25'W 123°24'W 123°23'W

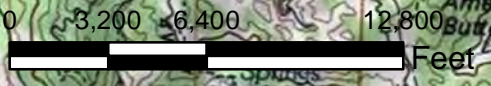


South Fire and Johnson Fire
Heat Acres: 63,393
Infrared Interpretation
Imagery Date:
9/29/2015 0130 Hrs



- Heat Perimeter
 - Isolated Heat Sources
- NAD 1983 UTM Zone 10N

40° 36.684' N
123° 31.323' W



IRIN: Kyle Felker
Map produced:
10/1/2015 0037 hrs

123°44'W 123°43'W 123°42'W 123°41'W 123°40'W 123°39'W 123°38'W 123°37'W 123°36'W 123°35'W 123°34'W 123°33'W 123°32'W 123°31'W 123°30'W 123°29'W 123°28'W 123°27'W 123°26'W 123°25'W 123°24'W 123°23'W