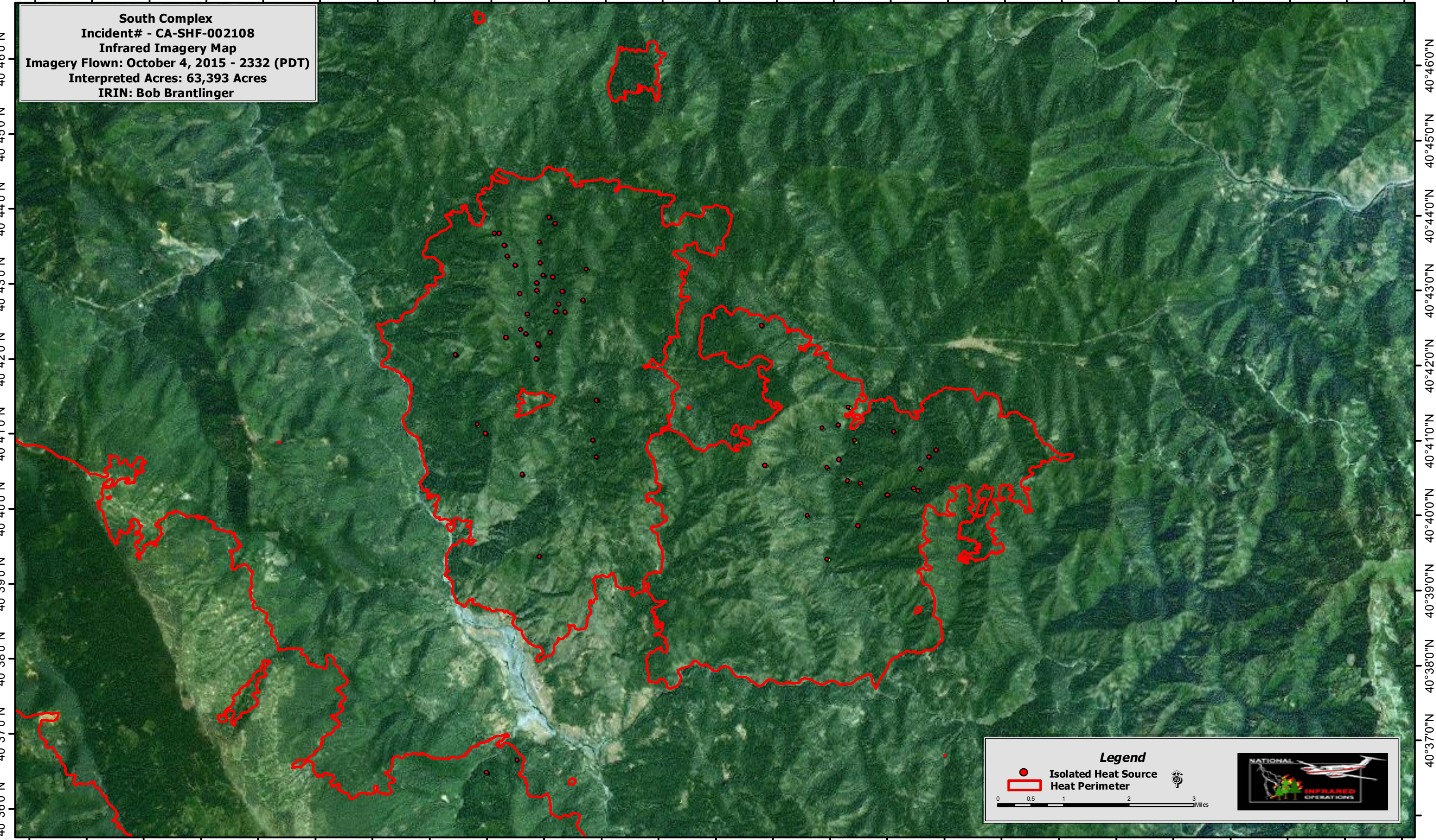


123°37'0"W 123°35'0"W 123°33'0"W 123°31'0"W 123°29'0"W 123°27'0"W 123°25'0"W 123°23'0"W 123°21'0"W 123°19'0"W 123°17'0"W 123°15'0"W 123°13'0"W


South Complex
Incident# - CA-SHF-002108
Infrared Imagery Map
Imagery Flown: October 4, 2015 - 2332 (PDT)
Interpreted Acres: 63,393 Acres
IRIN: Bob Brantlinger



Legend

- Isolated Heat Source
- ▭ Heat Perimeter

0 0.5 1 2 3 Miles



123°37'0"W 123°35'0"W 123°33'0"W 123°31'0"W 123°29'0"W 123°27'0"W 123°25'0"W 123°23'0"W 123°21'0"W 123°19'0"W 123°17'0"W 123°15'0"W 123°13'0"W