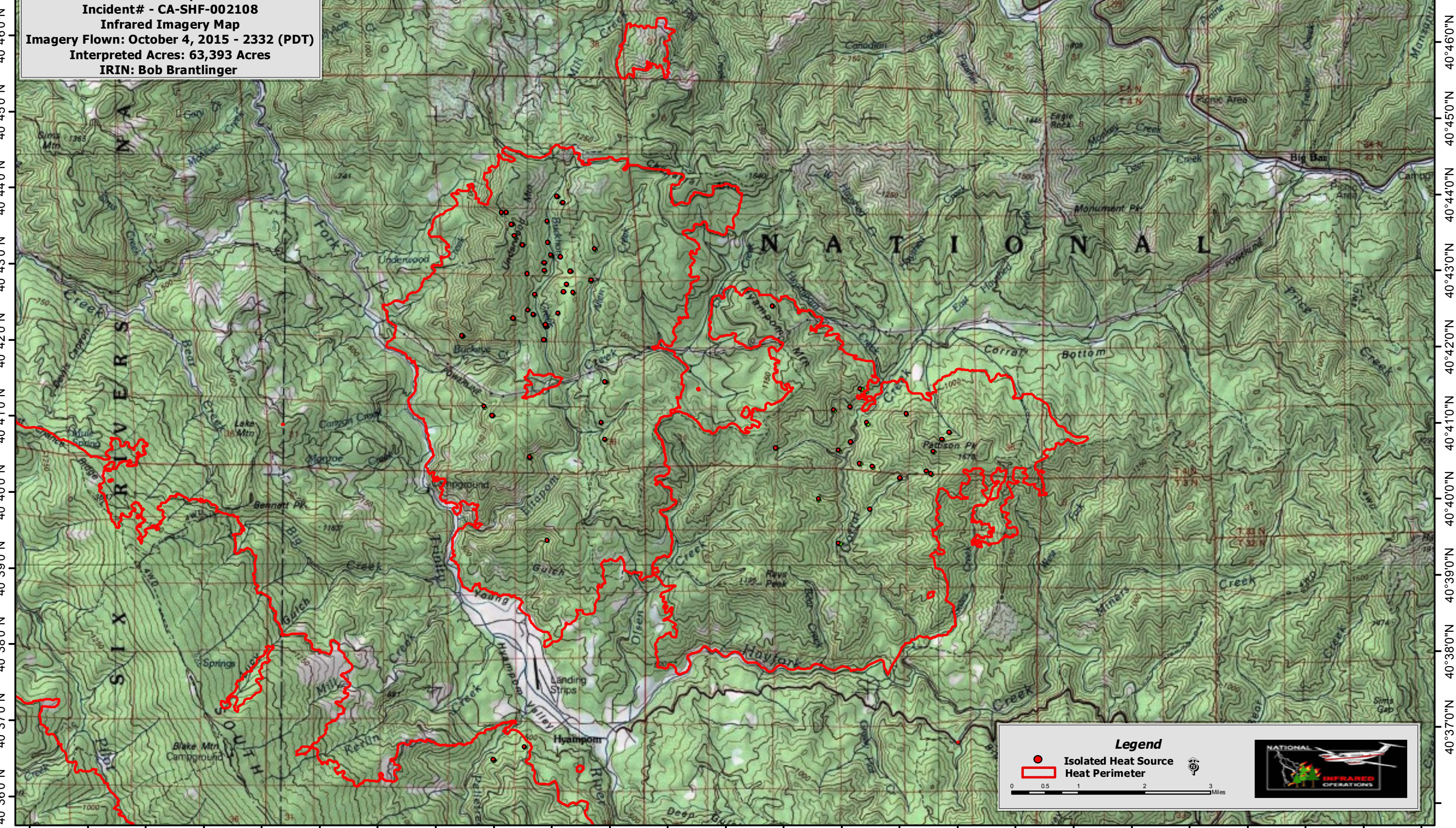


123°37'0"W 123°35'0"W 123°33'0"W 123°31'0"W 123°29'0"W 123°27'0"W 123°25'0"W 123°23'0"W 123°21'0"W 123°19'0"W 123°17'0"W 123°15'0"W 123°13'0"W

South Complex
Incident# - CA-SHF-002108
Infrared Imagery Map
Imagery Flown: October 4, 2015 - 2332 (PDT)
Interpreted Acres: 63,393 Acres
IRIN: Bob Brantlinger



123°37'0"W 123°35'0"W 123°33'0"W 123°31'0"W 123°29'0"W 123°27'0"W 123°25'0"W 123°23'0"W 123°21'0"W 123°19'0"W 123°17'0"W 123°15'0"W 123°13'0"W

Legend

- Isolated Heat Source
- ▭ Heat Perimeter

0 0.5 1 2 3 Miles

40°46'0"N
40°45'0"N
40°44'0"N
40°43'0"N
40°42'0"N
40°41'0"N
40°40'0"N
40°39'0"N
40°38'0"N
40°37'0"N