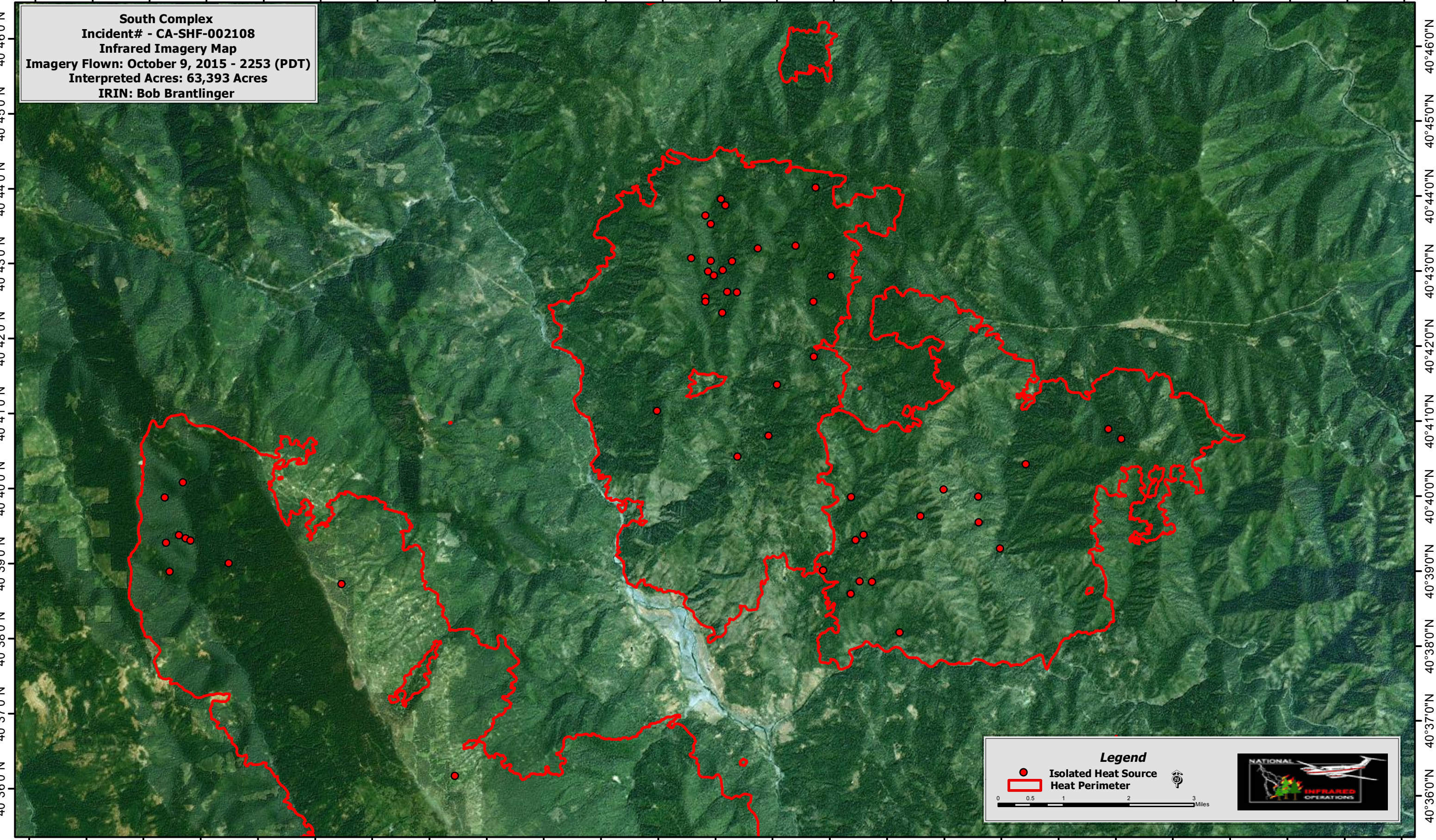


123°40'0"W 123°38'0"W 123°36'0"W 123°34'0"W 123°32'0"W 123°30'0"W 123°28'0"W 123°26'0"W 123°24'0"W 123°22'0"W 123°20'0"W 123°18'0"W 123°16'0"W

South Complex
Incident# - CA-SHF-002108
Infrared Imagery Map
Imagery Flown: October 9, 2015 - 2253 (PDT)
Interpreted Acres: 63,393 Acres
IRIN: Bob Brantlinger



123°40'0"W 123°38'0"W 123°36'0"W 123°34'0"W 123°32'0"W 123°30'0"W 123°28'0"W 123°26'0"W 123°24'0"W 123°22'0"W 123°20'0"W 123°18'0"W 123°16'0"W

Legend

- Isolated Heat Source
- ▭ Heat Perimeter

0 0.5 1 2 3 Miles

