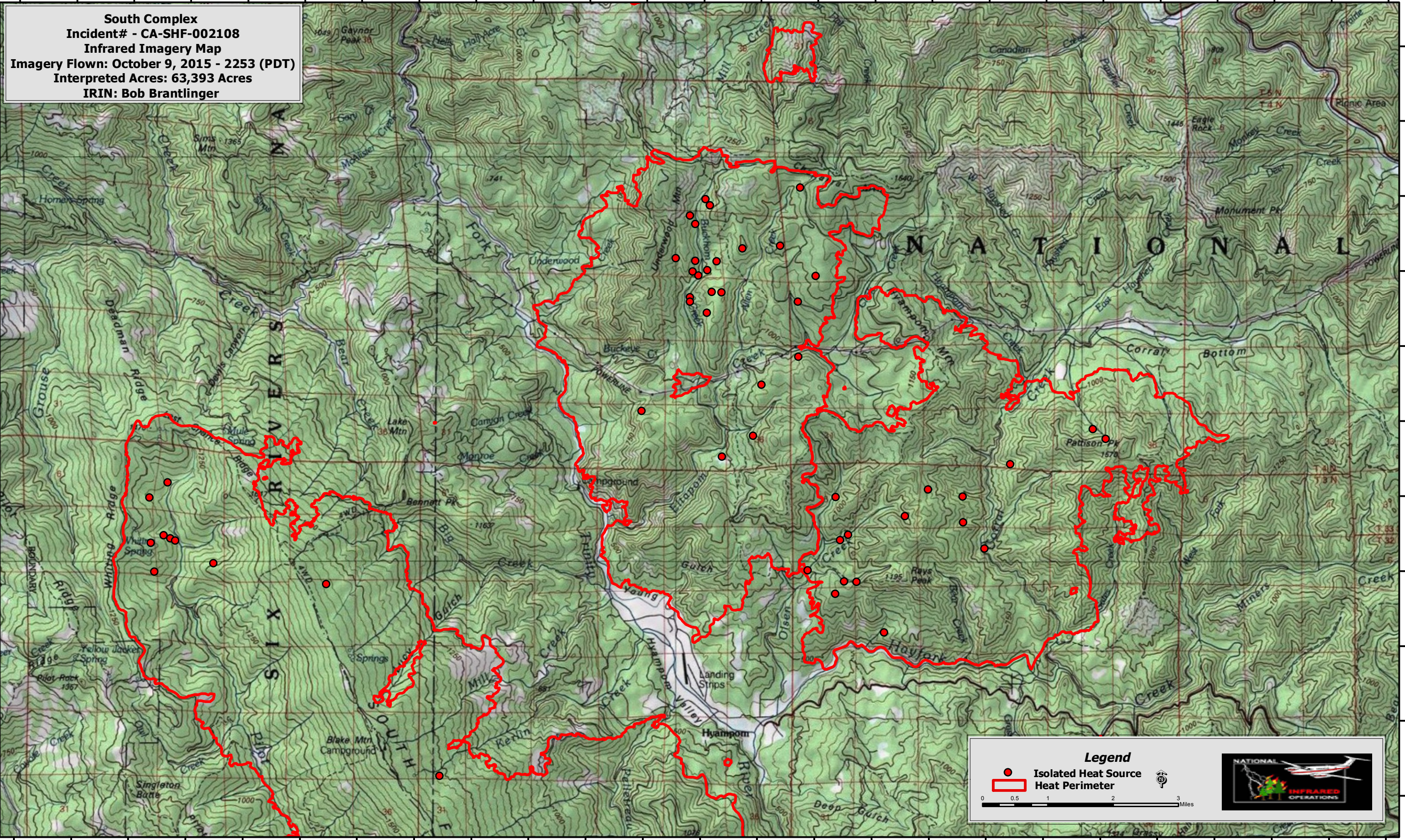


123°40'0"W 123°38'0"W 123°36'0"W 123°34'0"W 123°32'0"W 123°30'0"W 123°28'0"W 123°26'0"W 123°24'0"W 123°22'0"W 123°20'0"W 123°18'0"W 123°16'0"W

40°46'0"N  
40°45'0"N  
40°44'0"N  
40°43'0"N  
40°42'0"N  
40°41'0"N  
40°40'0"N  
40°39'0"N  
40°38'0"N  
40°37'0"N  
40°36'0"N

40°46'0"N  
40°45'0"N  
40°44'0"N  
40°43'0"N  
40°42'0"N  
40°41'0"N  
40°40'0"N  
40°39'0"N  
40°38'0"N  
40°37'0"N  
40°36'0"N

**South Complex**  
**Incident# - CA-SHF-002108**  
**Infrared Imagery Map**  
**Imagery Flown: October 9, 2015 - 2253 (PDT)**  
**Interpreted Acres: 63,393 Acres**  
**IRIN: Bob Brantlinger**



**Legend**

- Isolated Heat Source
- ▭ Heat Perimeter

0 0.5 1 2 3 Miles

123°40'0"W 123°38'0"W 123°36'0"W 123°34'0"W 123°32'0"W 123°30'0"W 123°28'0"W 123°26'0"W 123°24'0"W 123°22'0"W 123°20'0"W 123°18'0"W 123°16'0"W