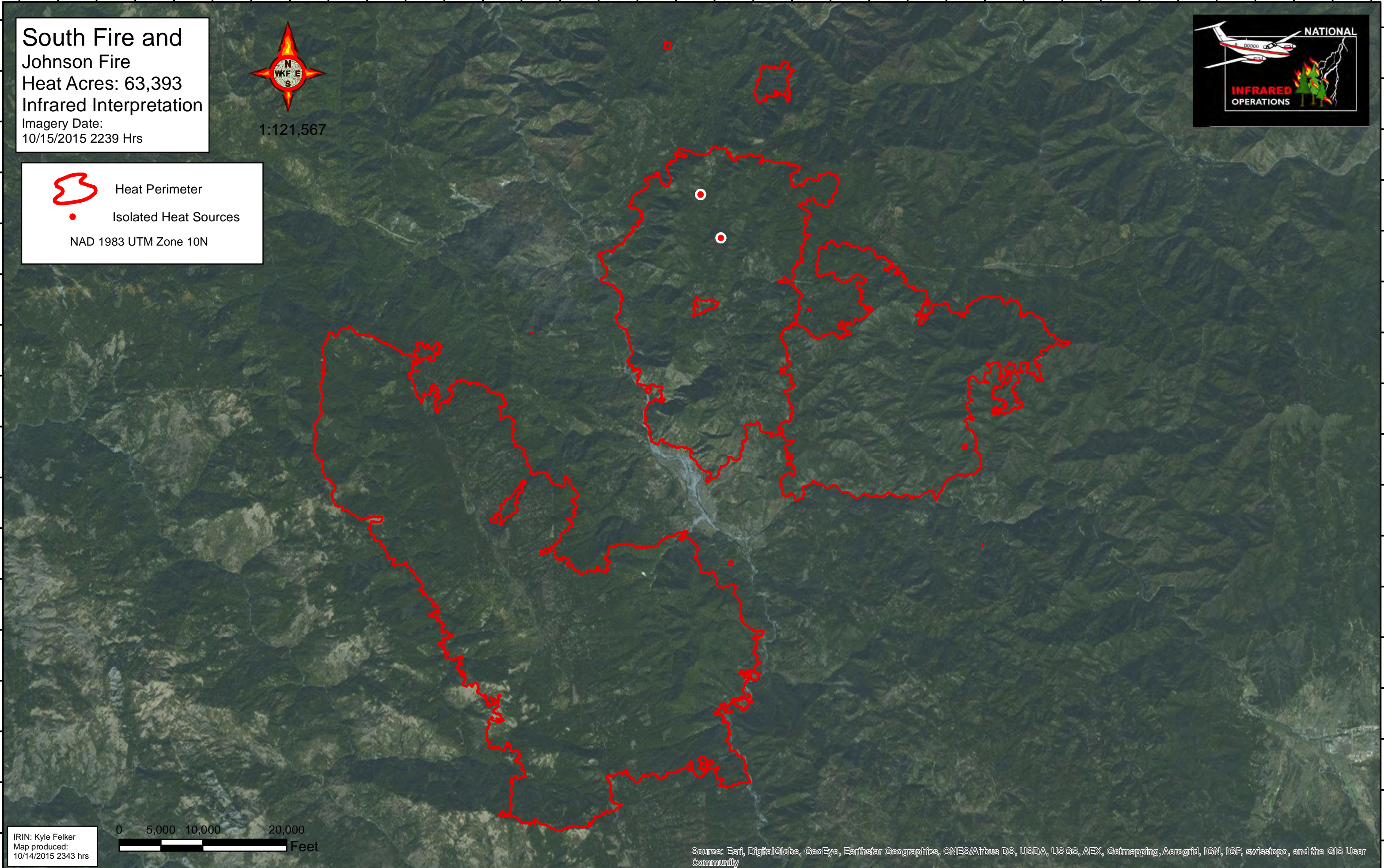




123°46'W 123°45'W 123°44'W 123°43'W 123°42'W 123°41'W 123°40'W 123°39'W 123°38'W 123°37'W 123°36'W 123°35'W 123°34'W 123°33'W 123°32'W 123°31'W 123°30'W 123°29'W 123°28'W 123°27'W 123°26'W 123°25'W 123°24'W 123°23'W 123°22'W 123°21'W 123°20'W 123°19'W 123°18'W 123°17'W 123°16'W 123°15'W 123°14'W 123°13'W 123°12'W 123°11'W

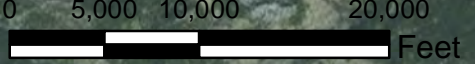


South Fire and Johnson Fire
Heat Acres: 63,393
Infrared Interpretation
Imagery Date:
10/15/2015 2239 Hrs



 Heat Perimeter
 Isolated Heat Sources
NAD 1983 UTM Zone 10N

IRIN: Kyle Felker
Map produced:
10/14/2015 2343 hrs



Source: Esri, DigitalGlobe, GeoEye, Earthstar Geographics, CNES/Airbus DS, USDA, USGS, AEX, Getmapping, Aerogrid, IGN, IGP, swisstopo, and the GIS User Community

123°46'W 123°45'W 123°44'W 123°43'W 123°42'W 123°41'W 123°40'W 123°39'W 123°38'W 123°37'W 123°36'W 123°35'W 123°34'W 123°33'W 123°32'W 123°31'W 123°30'W 123°29'W 123°28'W 123°27'W 123°26'W 123°25'W 123°24'W 123°23'W 123°22'W 123°21'W 123°20'W 123°19'W 123°18'W 123°17'W 123°16'W 123°15'W 123°14'W 123°13'W 123°12'W 123°11'W

40°47'N
40°46'N
40°45'N
40°44'N
40°43'N
40°42'N
40°41'N
40°40'N
40°39'N
40°38'N
40°37'N
40°36'N
40°35'N
40°34'N
40°33'N
40°32'N
40°31'N

40°47'N
40°46'N
40°45'N
40°44'N
40°43'N
40°42'N
40°41'N
40°40'N
40°39'N
40°38'N
40°37'N
40°36'N
40°35'N
40°34'N
40°33'N
40°32'N
40°31'N