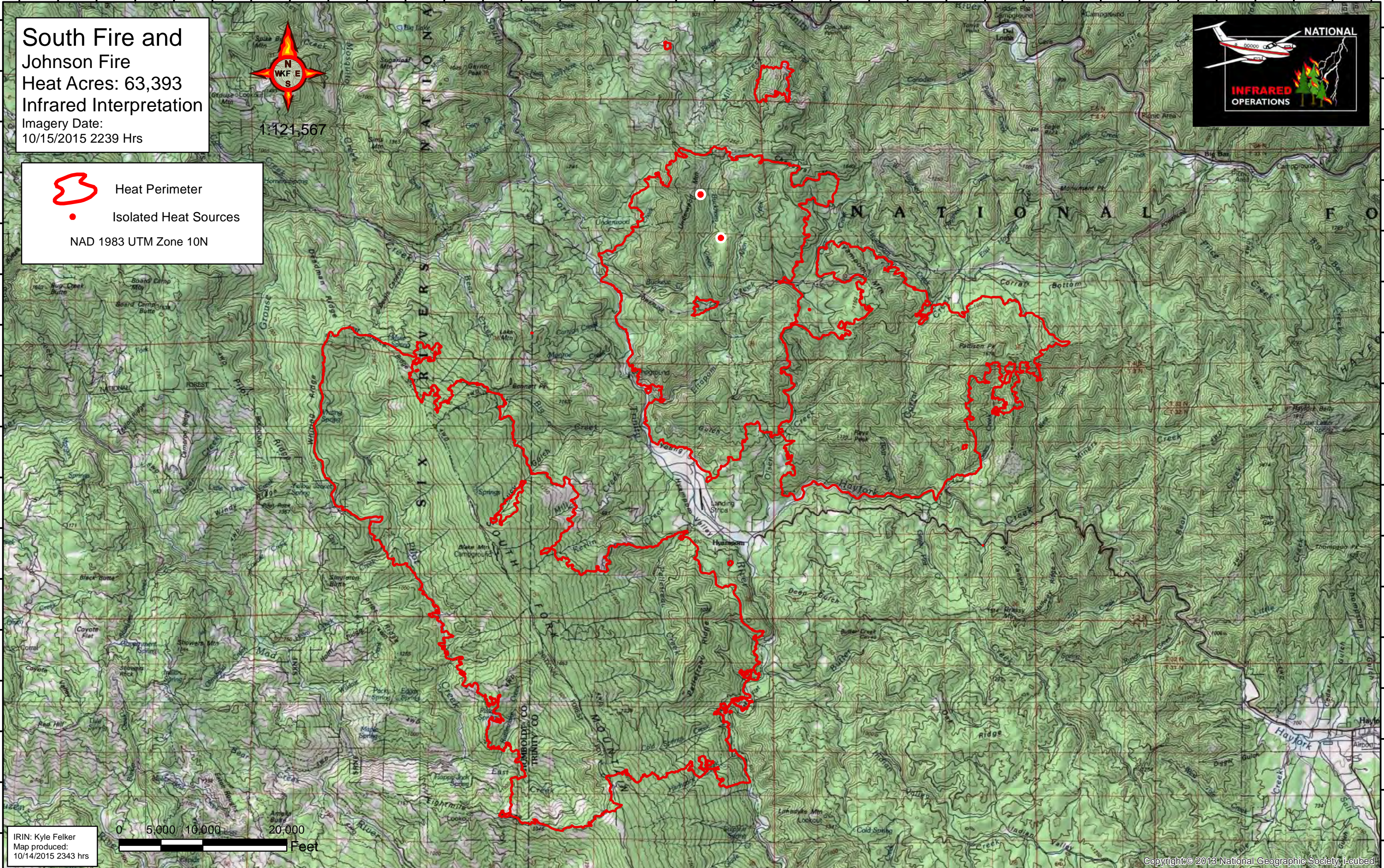




123°46'W 123°45'W 123°44'W 123°43'W 123°42'W 123°41'W 123°40'W 123°39'W 123°38'W 123°37'W 123°36'W 123°35'W 123°34'W 123°33'W 123°32'W 123°31'W 123°30'W 123°29'W 123°28'W 123°27'W 123°26'W 123°25'W 123°24'W 123°23'W 123°22'W 123°21'W 123°20'W 123°19'W 123°18'W 123°17'W 123°16'W 123°15'W 123°14'W 123°13'W 123°12'W 123°11'W



**South Fire and Johnson Fire**  
Heat Acres: 63,393  
Infrared Interpretation  
Imagery Date:  
10/15/2015 2239 Hrs



 Heat Perimeter  
 Isolated Heat Sources  
NAD 1983 UTM Zone 10N

IRIN: Kyle Felker  
Map produced:  
10/14/2015 2343 hrs



123°46'W 123°45'W 123°44'W 123°43'W 123°42'W 123°41'W 123°40'W 123°39'W 123°38'W 123°37'W 123°36'W 123°35'W 123°34'W 123°33'W 123°32'W 123°31'W 123°30'W 123°29'W 123°28'W 123°27'W 123°26'W 123°25'W 123°24'W 123°23'W 123°22'W 123°21'W 123°20'W 123°19'W 123°18'W 123°17'W 123°16'W 123°15'W 123°14'W 123°13'W 123°12'W 123°11'W