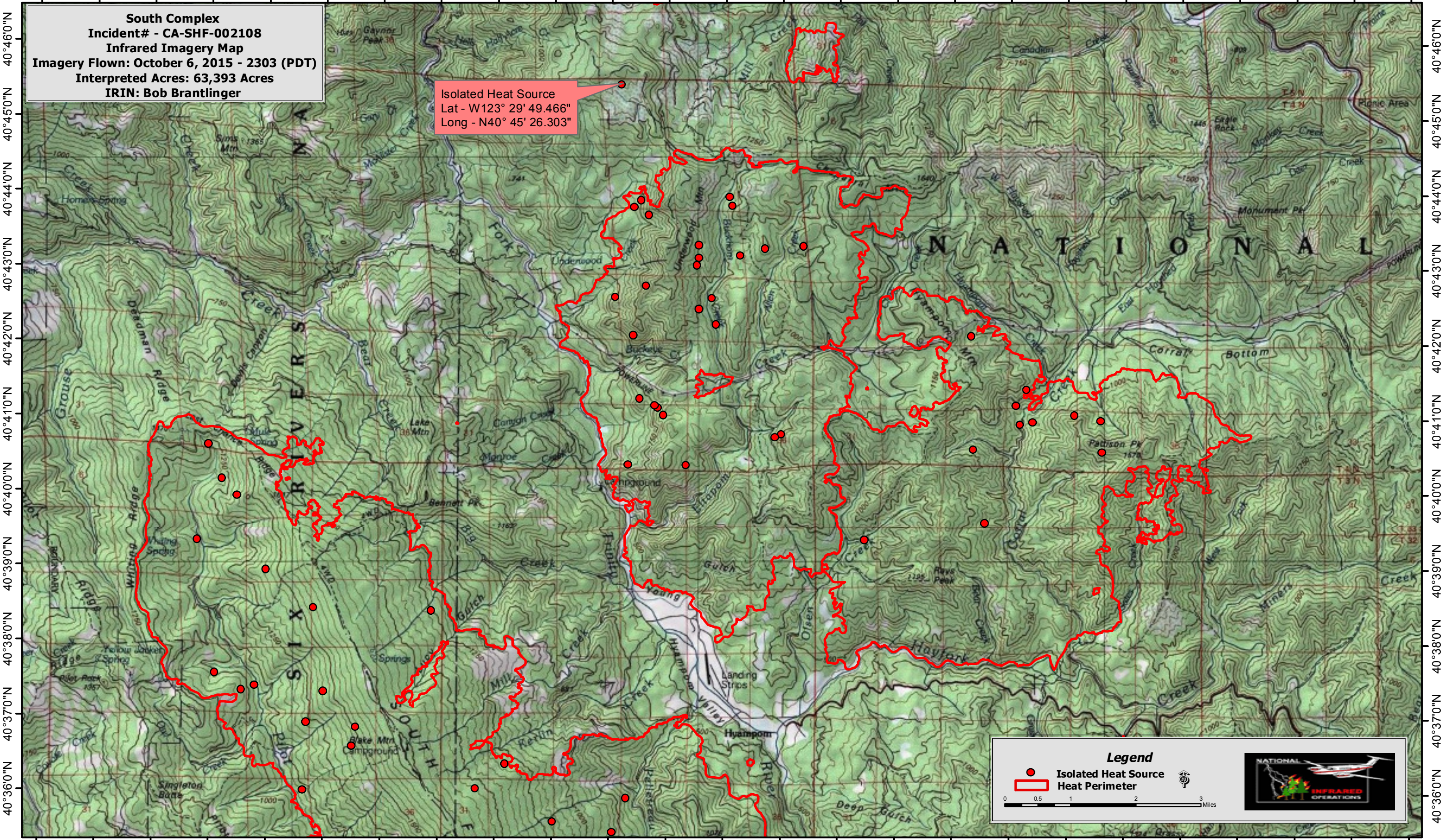


123°40'0"W 123°38'0"W 123°36'0"W 123°34'0"W 123°32'0"W 123°30'0"W 123°28'0"W 123°26'0"W 123°24'0"W 123°22'0"W 123°20'0"W 123°18'0"W 123°16'0"W




South Complex
Incident# - CA-SHF-002108
Infrared Imagery Map
Imagery Flown: October 6, 2015 - 2303 (PDT)
Interpreted Acres: 63,393 Acres
IRIN: Bob Brantlinger

Isolated Heat Source
Lat - W123° 29' 49.466"
Long - N40° 45' 26.303"

Legend

- Isolated Heat Source
- ▭ Heat Perimeter

0 0.5 1 2 3 Miles



123°40'0"W 123°38'0"W 123°36'0"W 123°34'0"W 123°32'0"W 123°30'0"W 123°28'0"W 123°26'0"W 123°24'0"W 123°22'0"W 123°20'0"W 123°18'0"W 123°16'0"W

40°46'0"N
40°45'0"N
40°44'0"N
40°43'0"N
40°42'0"N
40°41'0"N
40°40'0"N
40°39'0"N
40°38'0"N
40°37'0"N
40°36'0"N

40°46'0"N
40°45'0"N
40°44'0"N
40°43'0"N
40°42'0"N
40°41'0"N
40°40'0"N
40°39'0"N
40°38'0"N
40°37'0"N
40°36'0"N