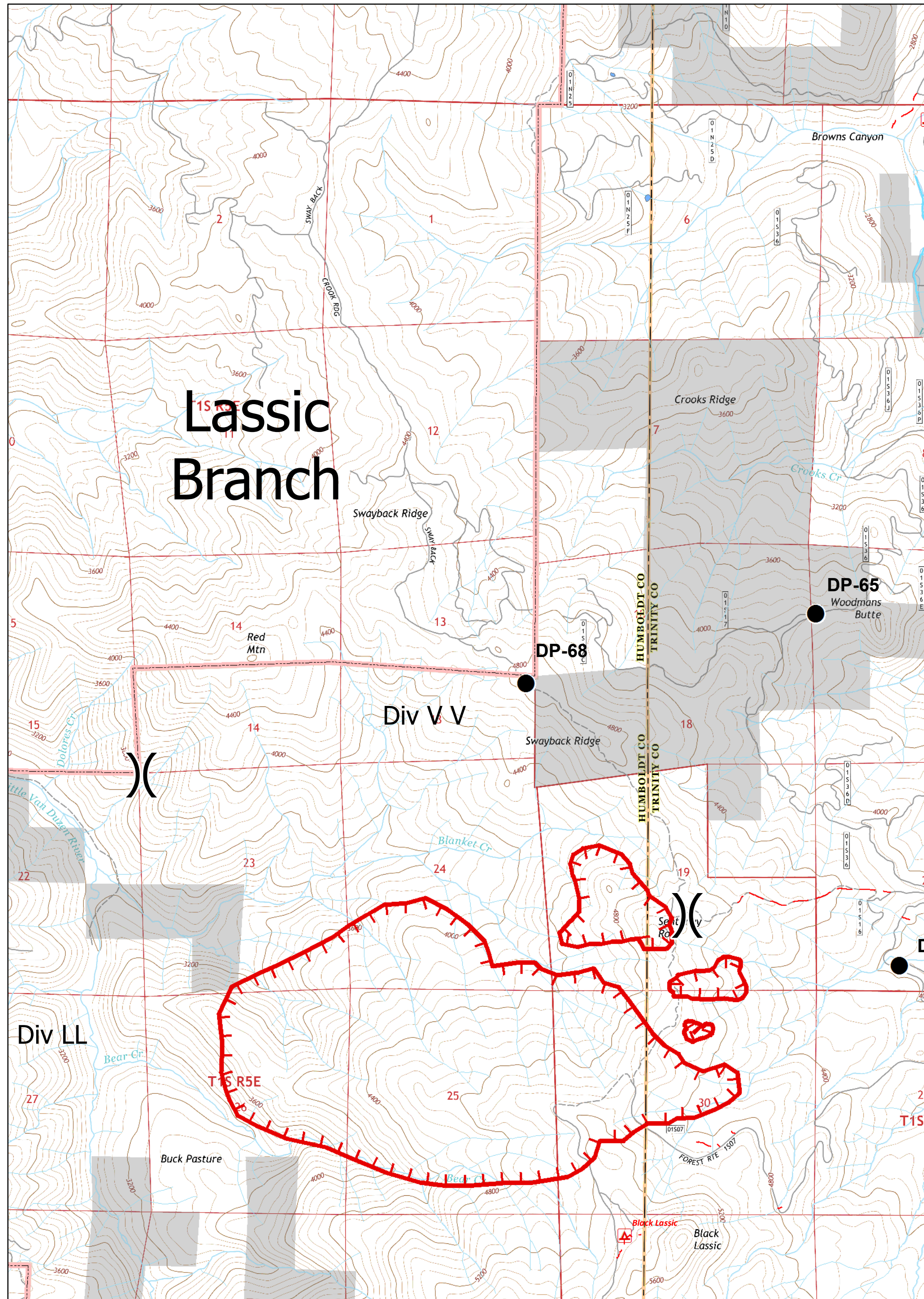


UTM Zone 10N  
NAD83  
TEAM 5





# Lassic Branch

Div V V

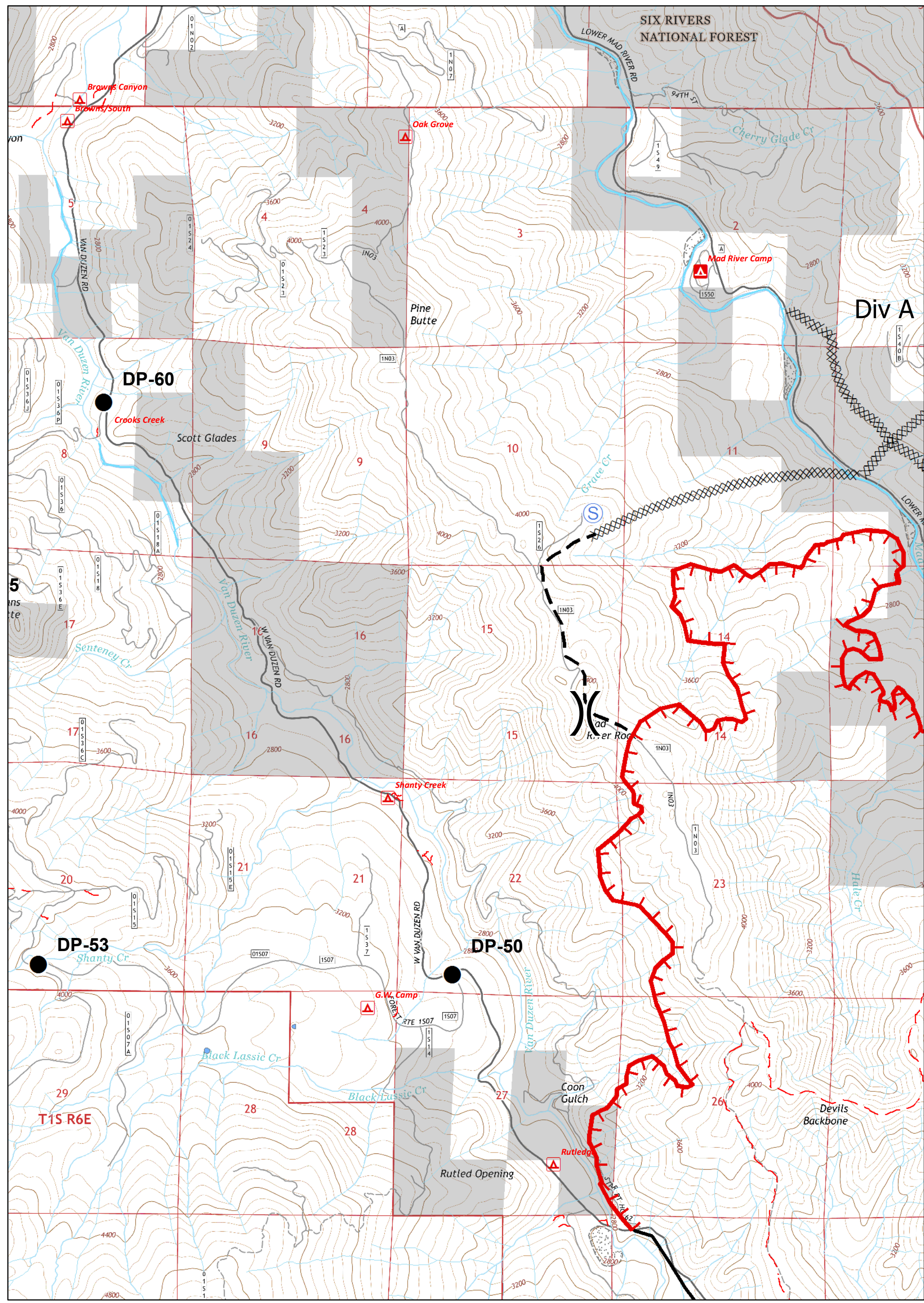
Div LL

T15R5E

Division	ICP	Staging Area	Uncontrolled Fire Edge	Completed Line	Major Roads	Dirt	Closed	Six Rivers National Forest Administrative Boundary
Drop Point	Water Source	Helibase	Completed Dozer Line	Planned Fire Line	Local Streets	Paved	4WD	Forest Trail

0 0.2 0.4 0.6 0.8 1 Miles

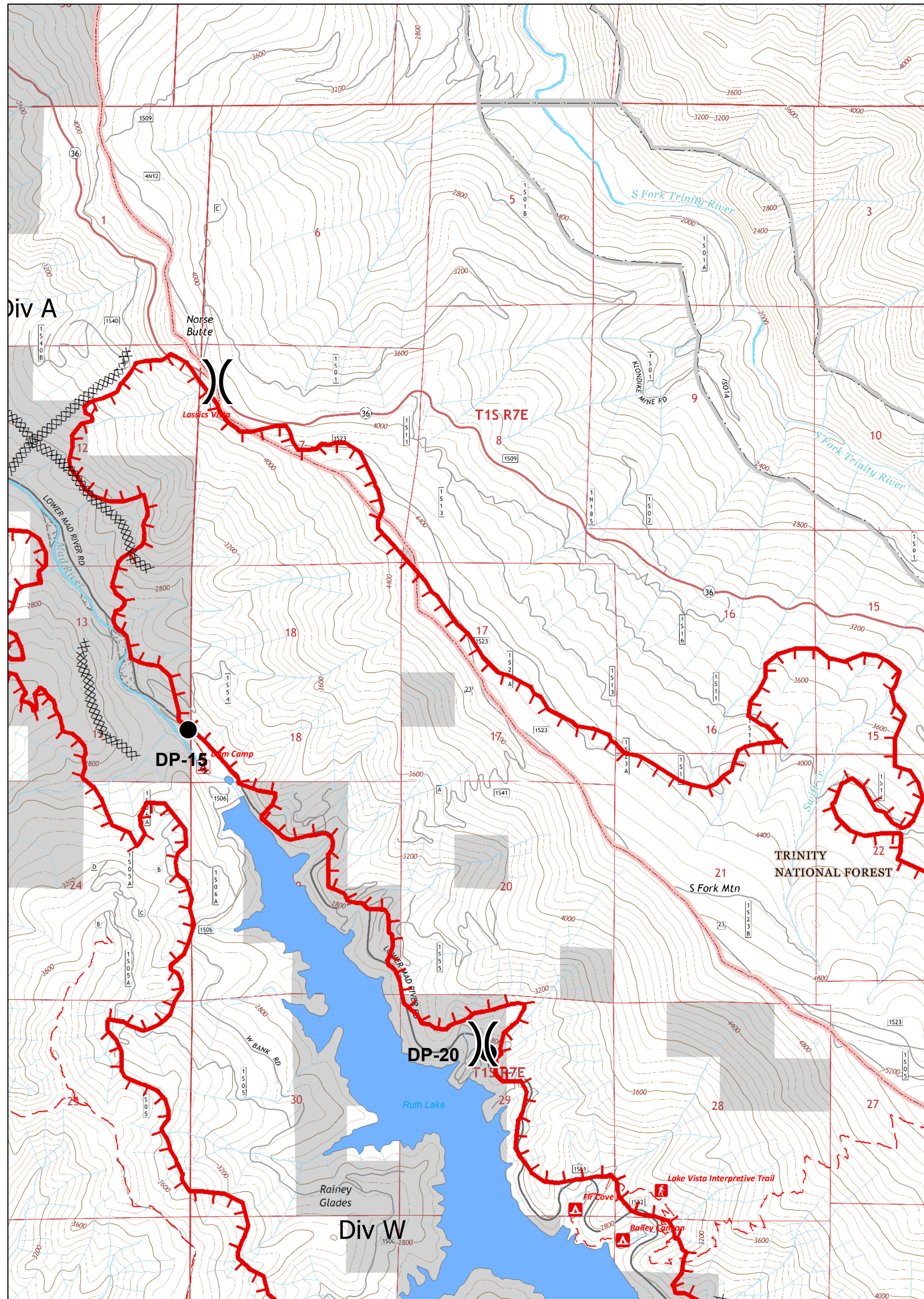
UTM Zone 10N  
NAD83  
TEAM 5



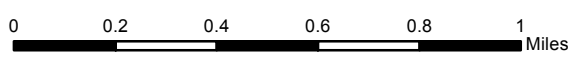
Division	ICP	Staging Area	Uncontrolled Fire Edge	Completed Line	Major Roads	Dirt	Closed	Six Rivers National Forest Administrative Boundary
Drop Point	Water Source	Helibase	Completed Dozer Line	Planned Fire Line	Local Streets	Paved	4WD	Forest Trail

0 0.2 0.4 0.6 0.8 1 Miles

UTM Zone 10N  
NAD83  
TEAM 5

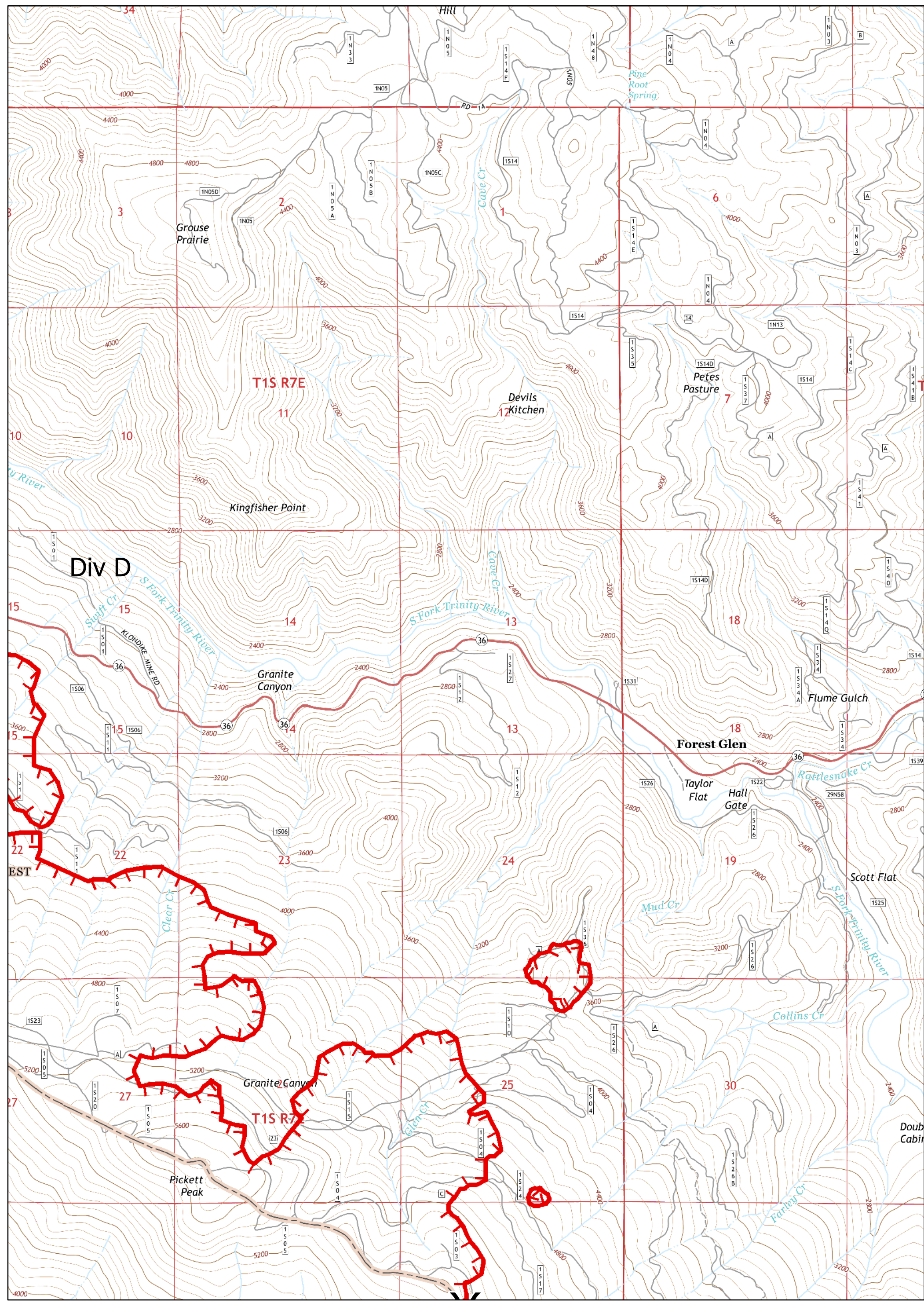


- |            |              |              |                        |                   |               |       |        |                                                    |
|------------|--------------|--------------|------------------------|-------------------|---------------|-------|--------|----------------------------------------------------|
| Division   | ICP          | Staging Area | Uncontrolled Fire Edge | Completed Line    | Major Roads   | Dirt  | Closed | Six Rivers National Forest Administrative Boundary |
| Drop Point | Water Source | Helibase     | Completed Dozer Line   | Planned Fire Line | Local Streets | Paved | 4WD    | Forest Trail                                       |




UTM Zone 10N  
NAD83  
TEAM 5



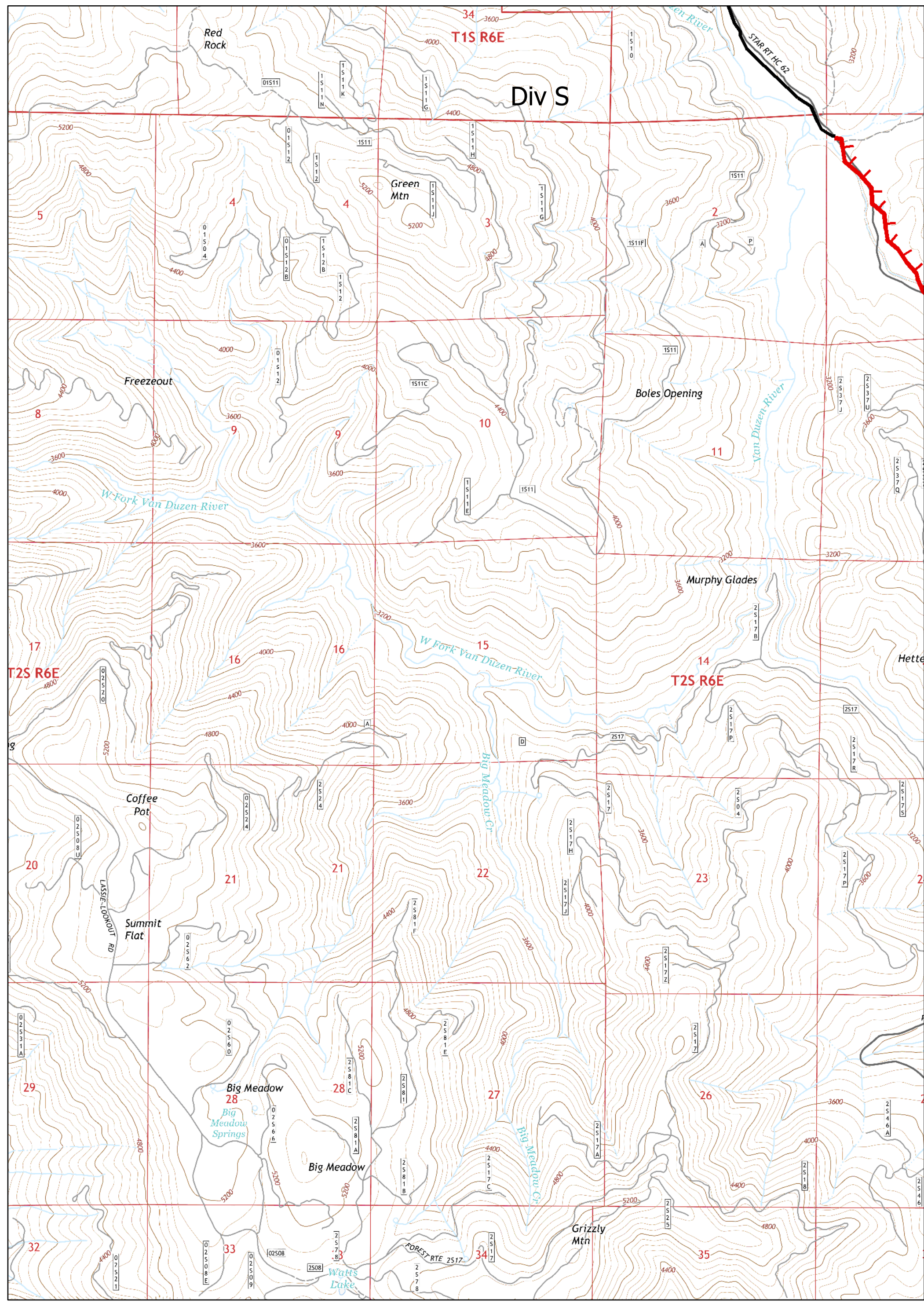


Division	ICP	Staging Area	Uncontrolled Fire Edge	Completed Line	Major Roads	Dirt	Closed	Six Rivers National Forest Administrative Boundary
Drop Point	Water Source	Helibase	Completed Dozer Line	Planned Fire Line	Local Streets	Paved	4WD	

0 0.2 0.4 0.6 0.8 1 Miles



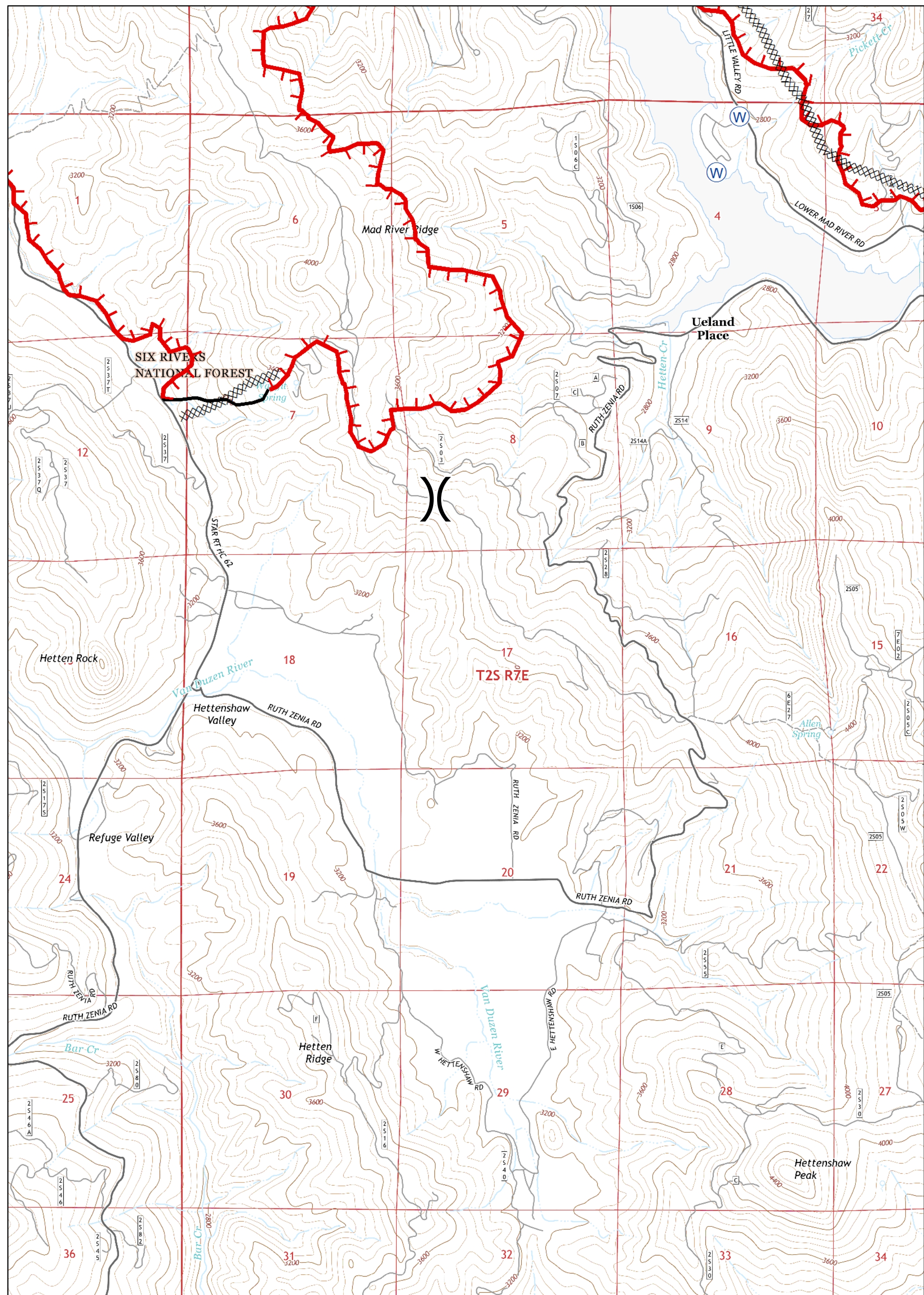
UTM Zone 10N  
NAD83  
TEAM 5



Division	ICP	Staging Area	Uncontrolled Fire Edge	Completed Line	Major Roads	Dirt	Closed	Six Rivers National Forest Administrative Boundary
Drop Point	Water Source	Helibase	Completed Dozer Line	Planned Fire Line	Local Streets	Paved	4WD	Forest Trail

0 0.2 0.4 0.6 0.8 1 Miles

UTM Zone 10N  
NAD83  
TEAM 5



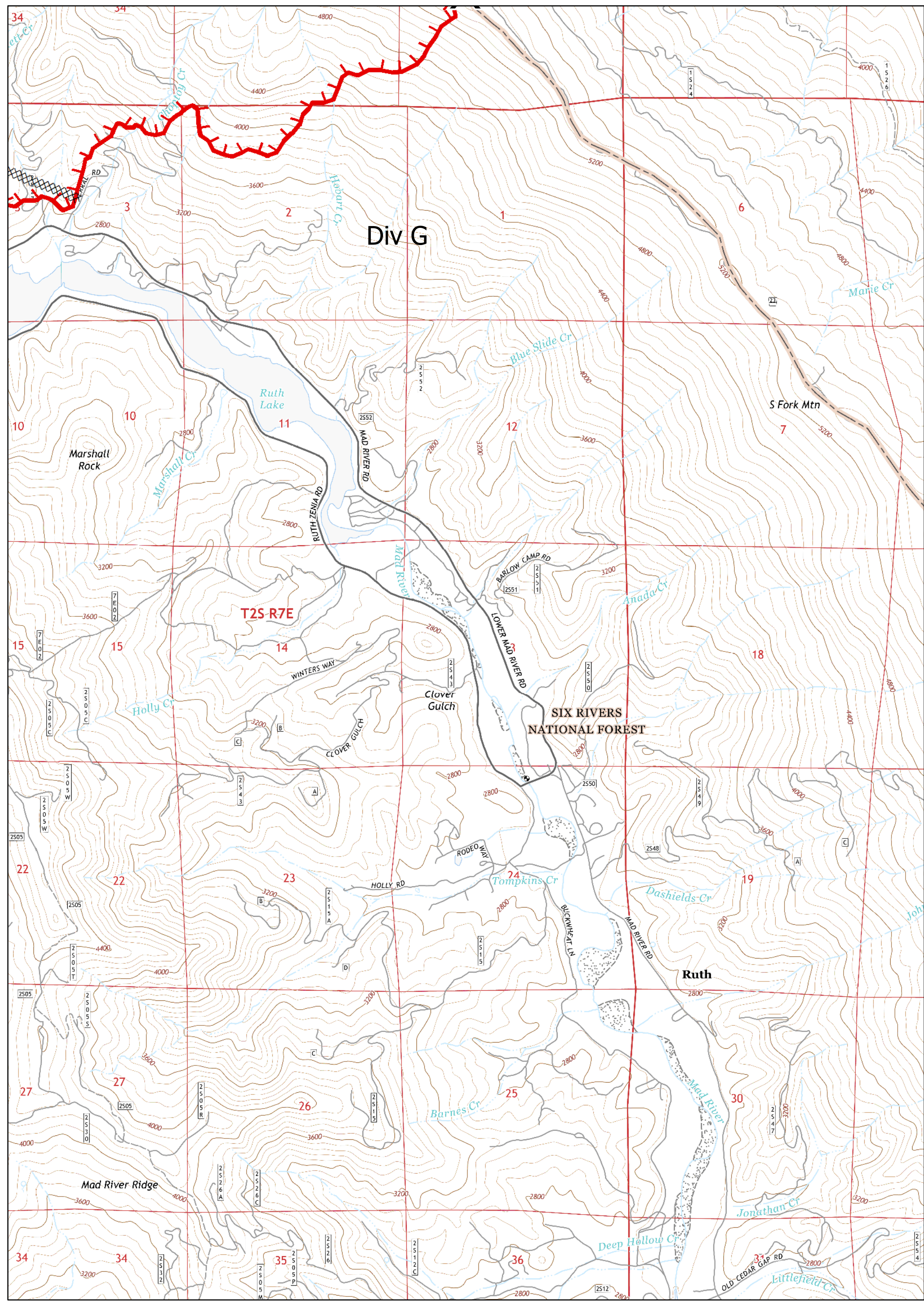
))

T2S R7E

)) Division	ICP	Staging Area	Uncontrolled Fire Edge	Completed Line	Major Roads	Dirt	Closed	Six Rivers National Forest Administrative Boundary
● Drop Point	Water Source	Helibase	Completed Dozer Line	Planned Fire Line	Local Streets	Paved	4WD	Forest Trail

0 0.2 0.4 0.6 0.8 1 Miles


UTM Zone 10N  
NAD83  
TEAM 5



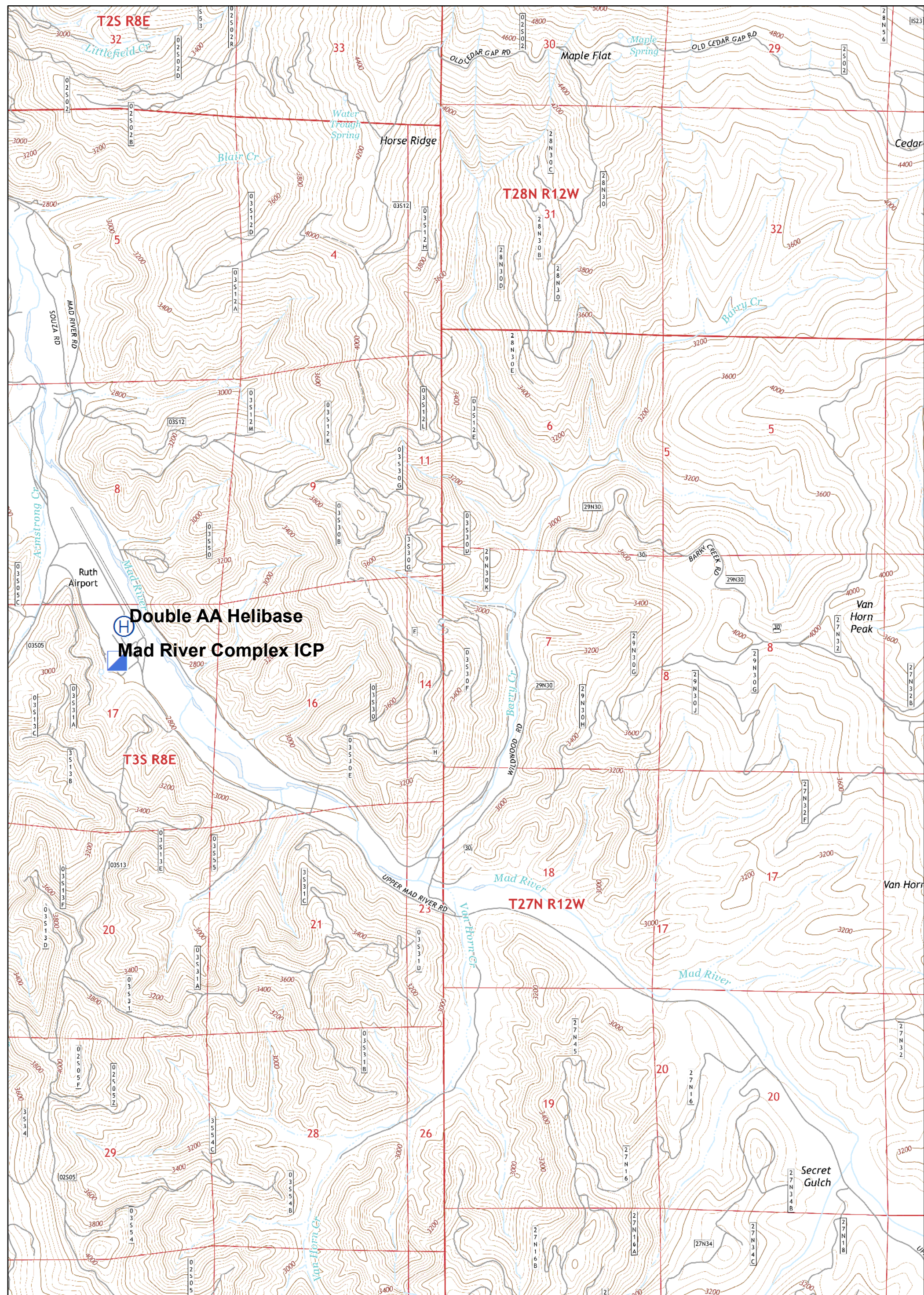
Division	ICP	Staging Area	Uncontrolled Fire Edge	Completed Line	Major Roads	Dirt	Closed	Six Rivers National Forest Administrative Boundary
Drop Point	Water Source	Helibase	Completed Dozer Line	Planned Fire Line	Local Streets	Paved	4WD	Forest Trail

0 0.2 0.4 0.6 0.8 1 Miles

UTM Zone 10N  
NAD83  
TEAM 5







**Double AA Helibase**  
**Mad River Complex ICP**

Division	ICP	Staging Area	Uncontrolled Fire Edge	Completed Line	Major Roads	Dirt	Closed	Six Rivers National Forest Administrative Boundary
Drop Point	Water Source	Helibase	Completed Dozer Line	Planned Fire Line	Local Streets	Paved	4WD	Forest Trail

0 0.2 0.4 0.6 0.8 1 Miles

UTM Zone 10N  
NAD83  
TEAM 5