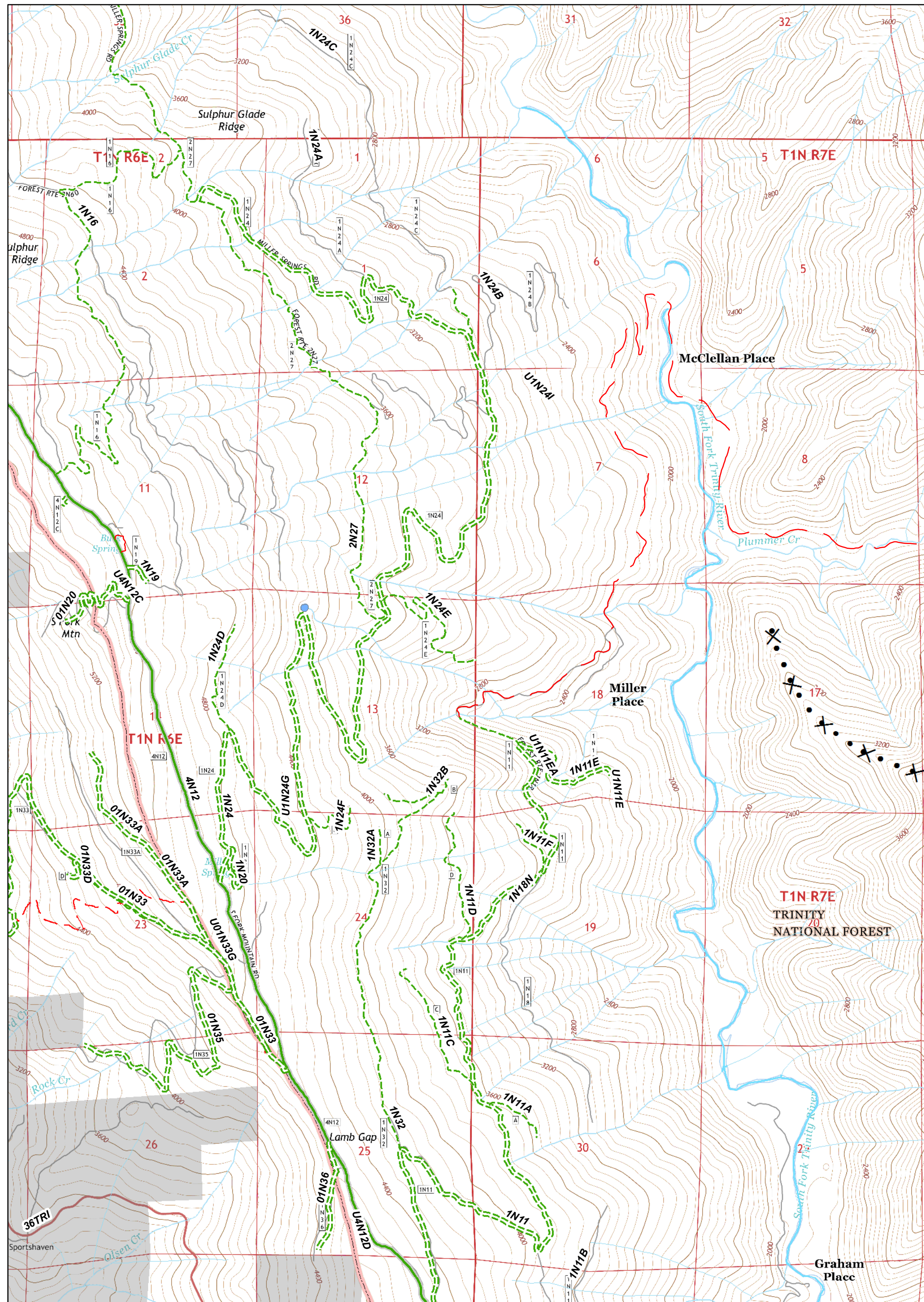


Branch	Drop Point	Structures	Spot Fire	Handline	Six Rivers National Forest Administrative Boundary	Major Roads	Dirt	Closed
Division	Helibase	Safety Zone	Uncontrolled Fire Edge	Proposed Dozer Line	Forest Trail	Local Streets	Paved	4WD
ICP	Camp	Repeater	Completed Dozer Line	Completed Line				

0 0.25 0.5 0.75 1 Miles

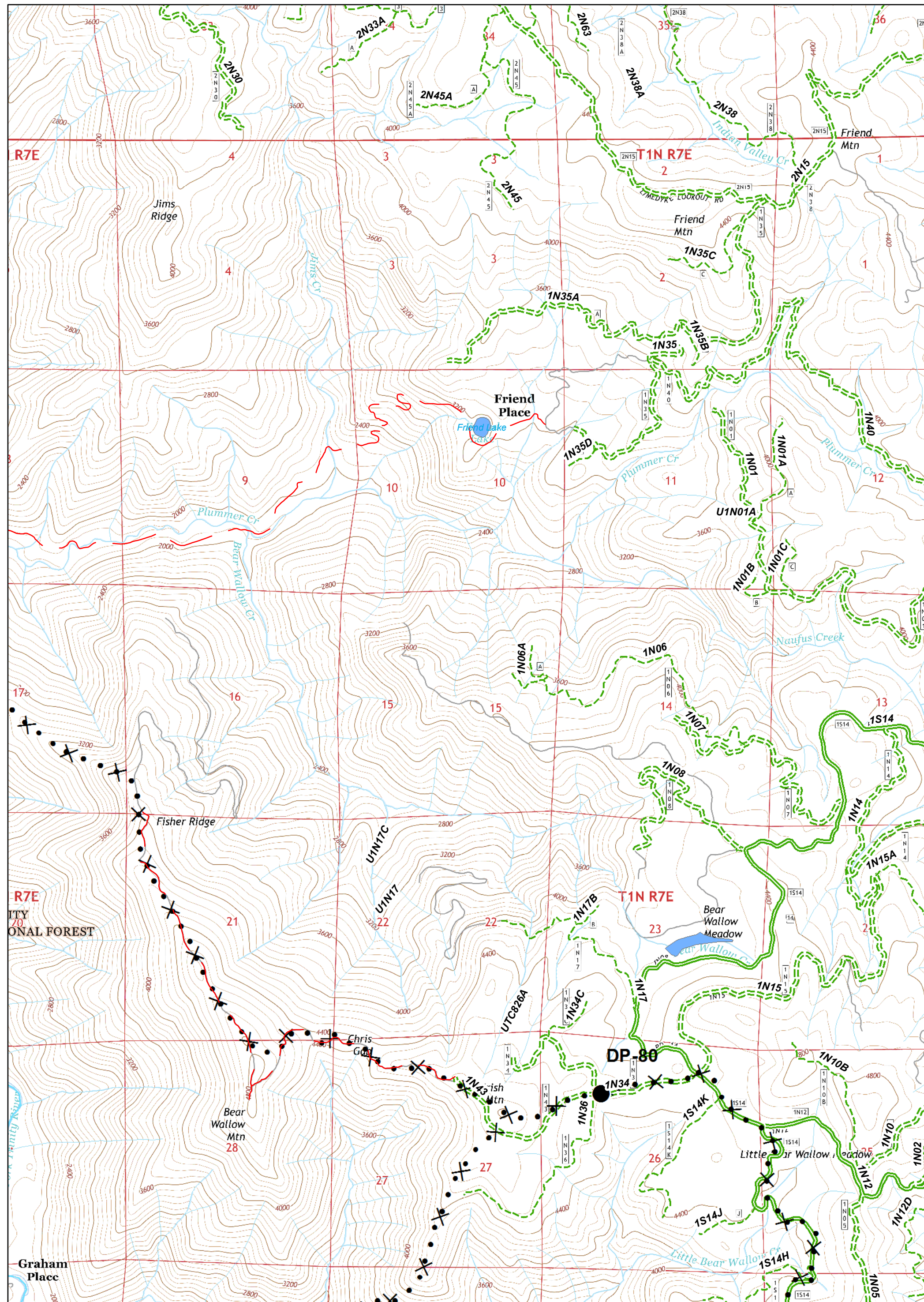
UTM Zone 10N  
NAD83  
TEAM 5



Branch	Drop Point	Structures	Spot Fire	Handline	Six Rivers National Forest Administrative Boundary	Major Roads	Closed
Division	Helibase	Safety Zone	Uncontrolled Fire Edge	Proposed Dozer Line	Forest Trail	Local Streets	Paved
ICP	Camp	Repeater	Completed Dozer Line	Completed Line			4WD

0 0.25 0.5 0.75 1 Miles

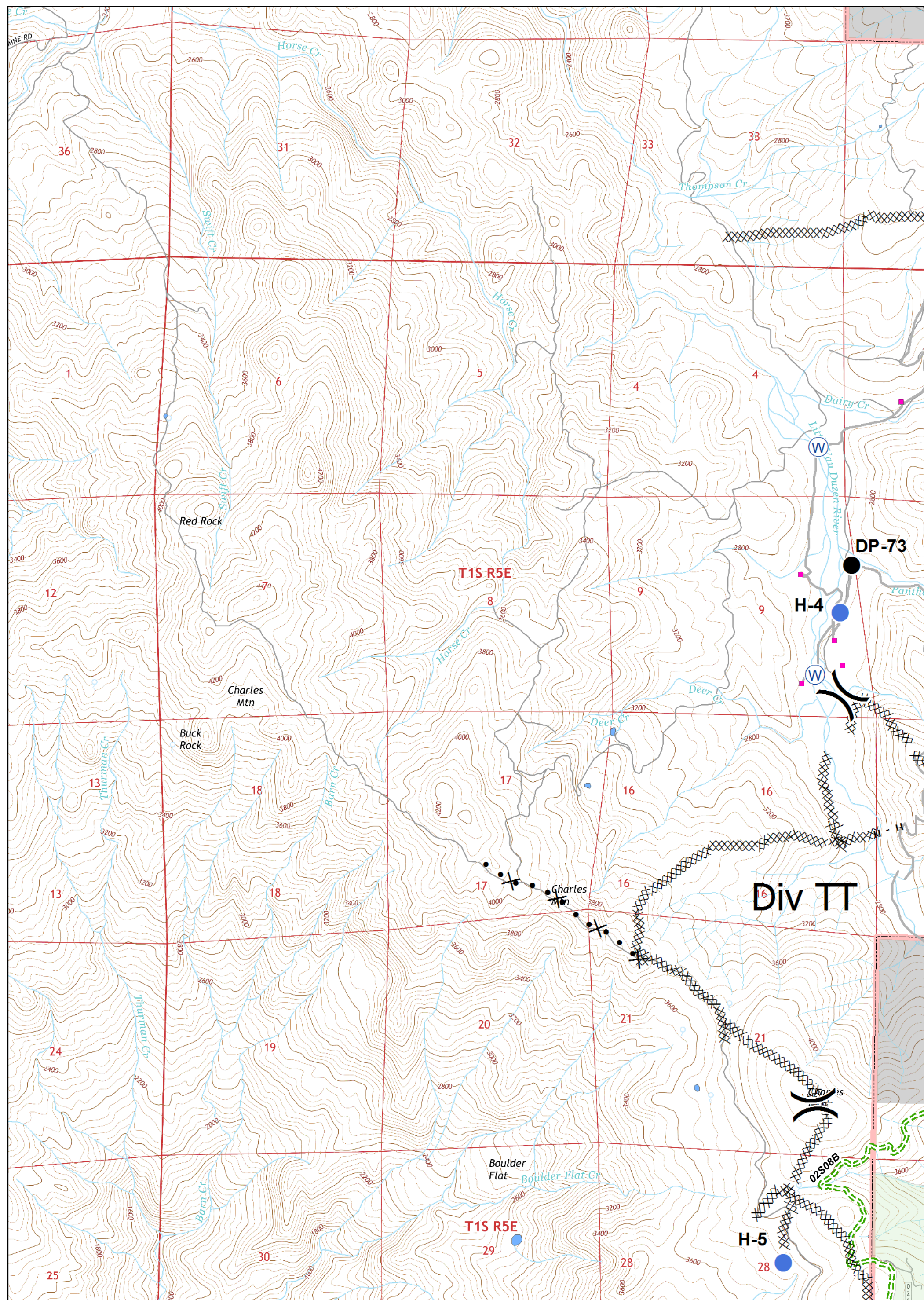
UTM Zone 10N  
NAD83  
TEAM 5



Branch	Drop Point	Structures	Spot Fire	Handline	Six Rivers National Forest Administrative Boundary	Major Roads	Dirt	Closed
Division	Helibase	Safety Zone	Uncontrolled Fire Edge	Proposed Dozer Line	Forest Trail	Local Streets	Paved	4WD
ICP	Camp	Repeater	Completed Dozer Line	Completed Line				

0 0.25 0.5 0.75 1 Miles

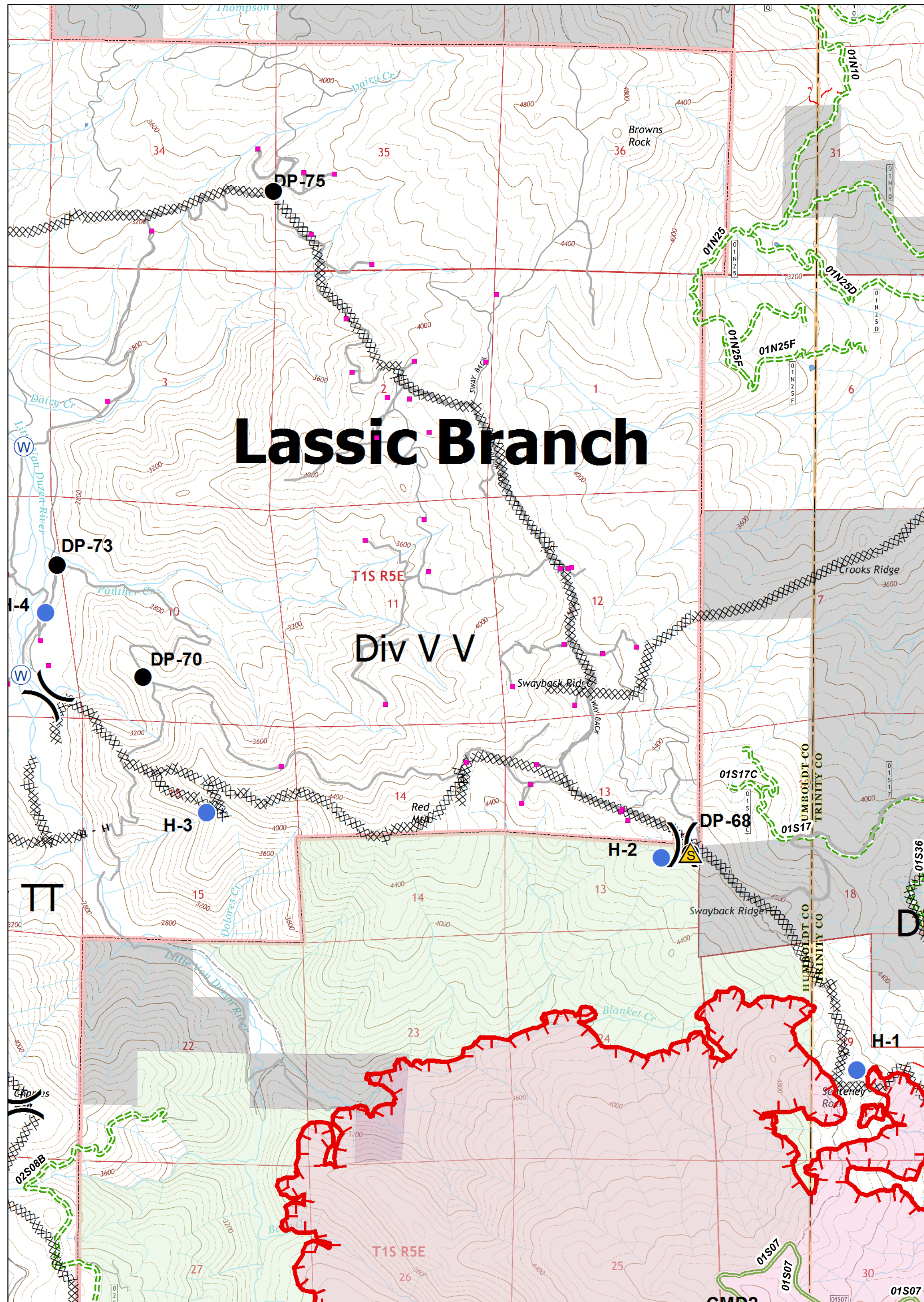
UTM Zone 10N  
NAD83  
TEAM 5



Branch	Drop Point	Structures	Spot Fire	Handline	Six Rivers National Forest Administrative Boundary	Major Roads	Dirt	Closed
Division	Helibase	Safety Zone	Uncontrolled Fire Edge	Proposed Dozer Line	Forest Trail	Local Streets	Paved	4WD
ICP	Camp	Repeater	Completed Dozer Line	Completed Line				

0 0.25 0.5 0.75 1 Miles

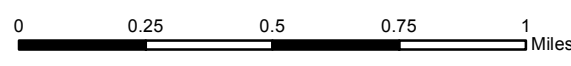
UTM Zone 10N  
NAD83  
TEAM 5



# Lassie Branch

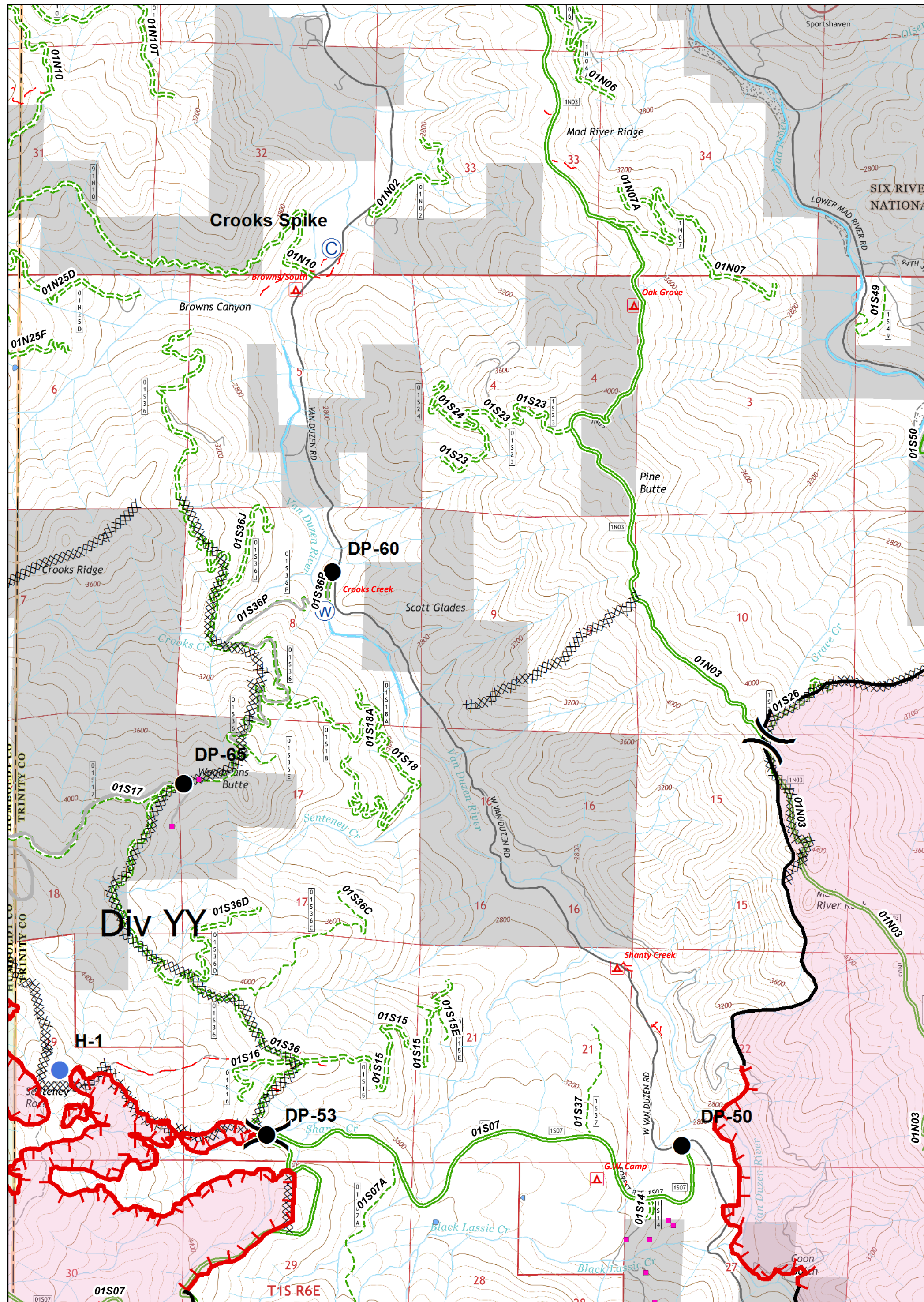
Div V V

Branch	Drop Point	Structures	Spot Fire	Handline	Six Rivers National Forest Administrative Boundary	Major Roads	Dirt	Closed
Division	Helibase	Safety Zone	Uncontrolled Fire Edge	Proposed Dozer Line	Forest Trail	Local Streets	Paved	4WD
ICP	Camp	Repeater	Completed Dozer Line	Completed Line				



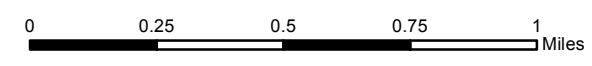

UTM Zone 10N  
NAD83  
TEAM 5



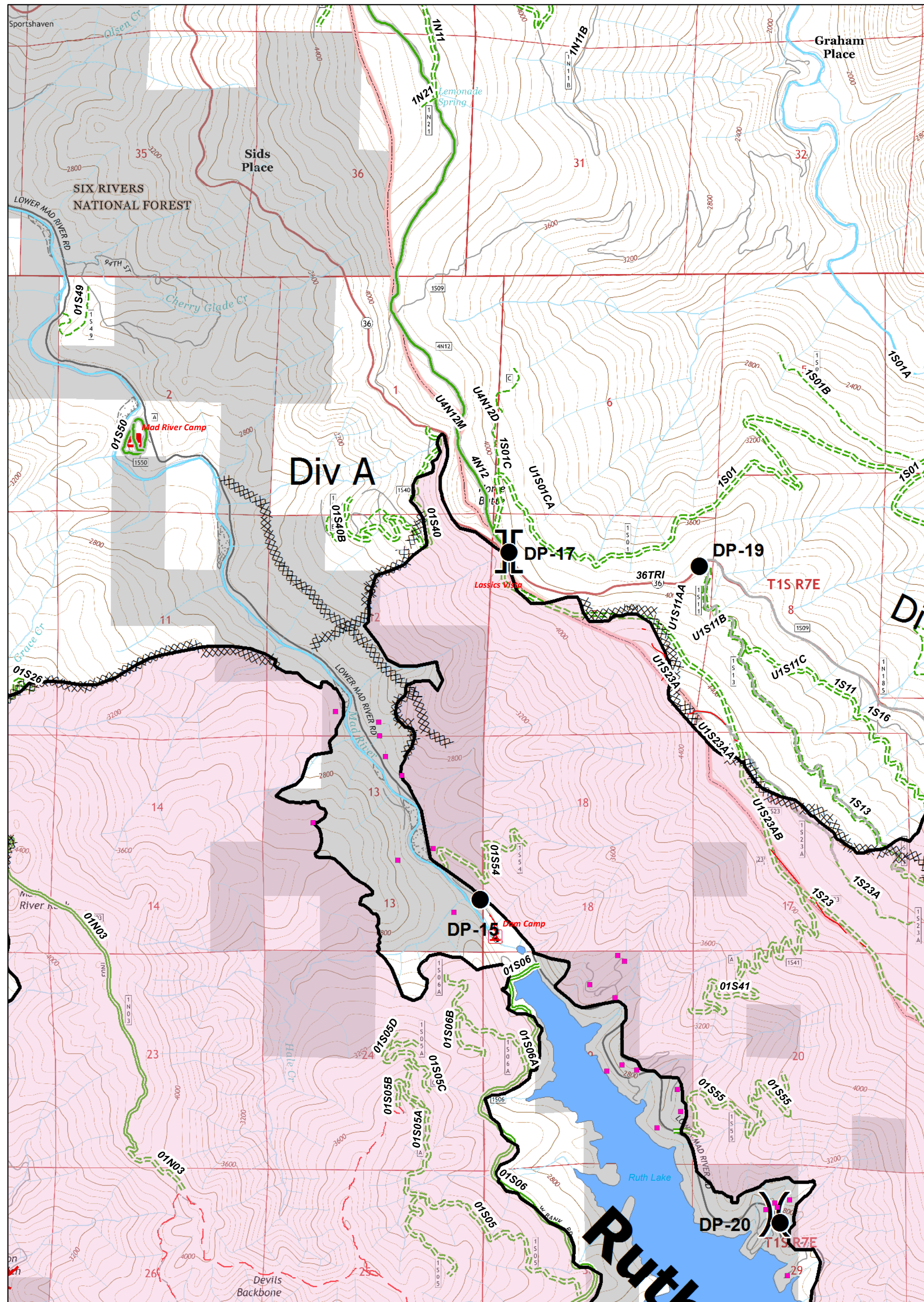


- [ ] Branch
- Drop Point
- ⊕ Helibase
- ⊙ Helispot
- ⊙ ICP
- ⊙ Camp
- ⊙ Repeater
- ⚠ Safety Zone
- ⊙ Water Source
- ⊙ Spot Fire
- ⊙ Uncontrolled Fire Edge
- ⊙ Completed Dozer Line
- ⊙ Completed Line
- H - Handline
- ⊙ Proposed Dozer Line

- ⊙ Six Rivers National Forest Administrative Boundary
- ⊙ Forest Trail
- ⊙ Major Roads
- ⊙ Local Streets
- ⊙ Dirt
- ⊙ Paved
- ⊙ Closed
- ⊙ 4WD

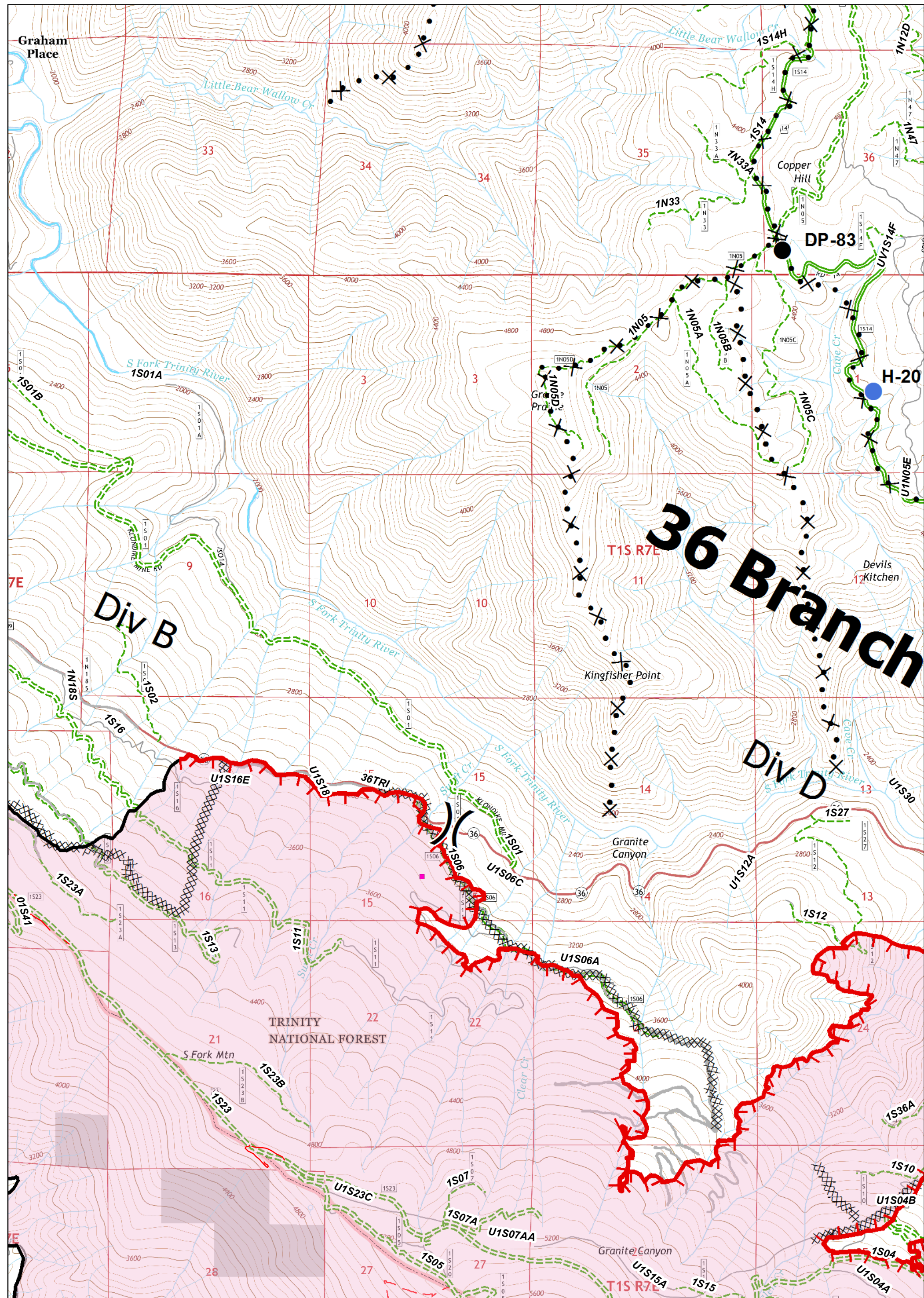
UTM Zone 10N  
NAD83  
TEAM 5



Branch	Drop Point	Structures	Spot Fire	Handline	Six Rivers National Forest Administrative Boundary	Major Roads	Dirt	Closed
Division	Helibase	Safety Zone	Uncontrolled Fire Edge	Proposed Dozer Line	Forest Trail	Local Streets	Paved	4WD
ICP	Camp	Repeater	Completed Dozer Line	Completed Line				

0 0.25 0.5 0.75 1 Miles

UTM Zone 10N  
NAD83  
TEAM 5

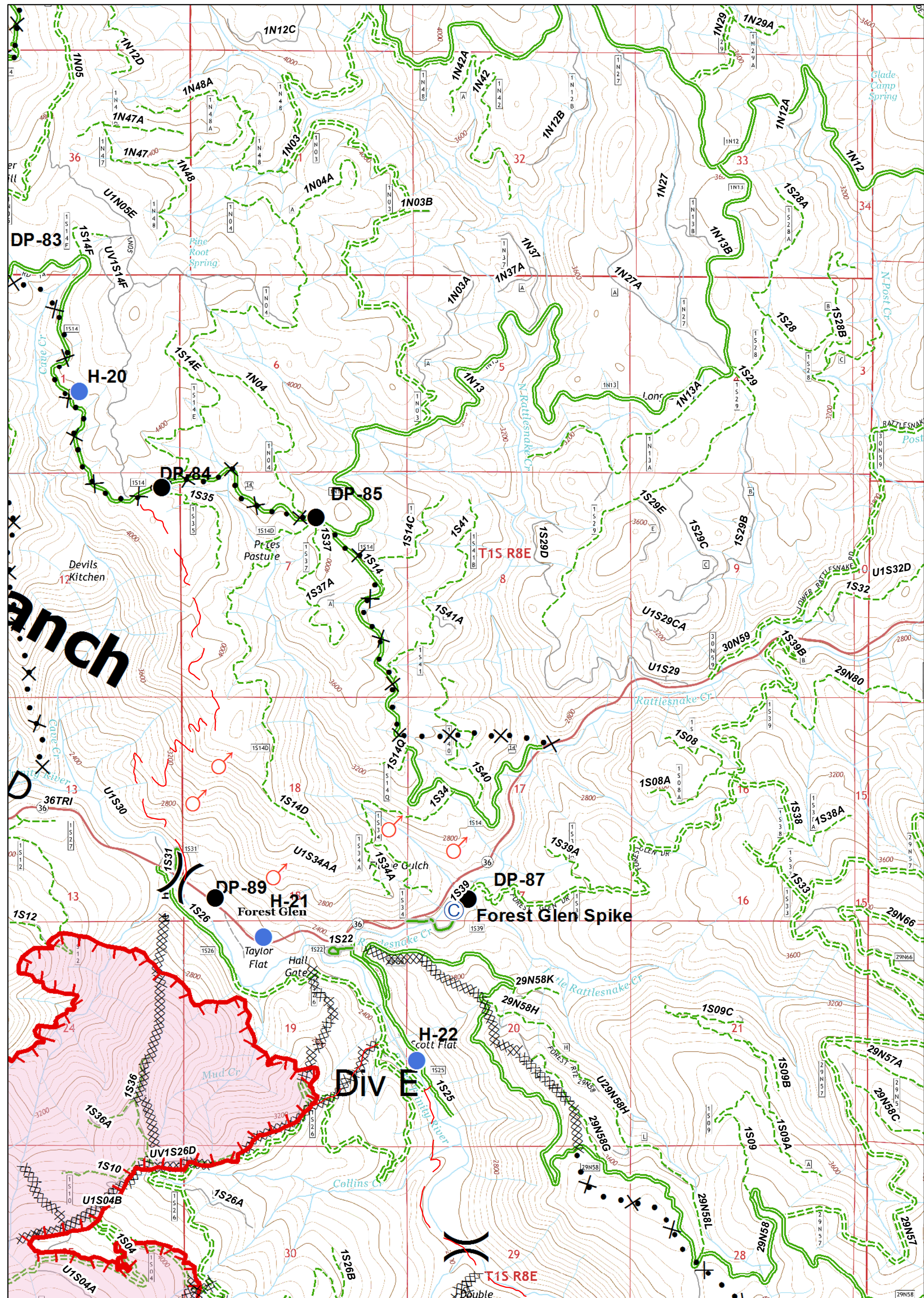


Branch	Drop Point	Structures	Spot Fire	Handline	Six Rivers National Forest Administrative Boundary	Major Roads	Dirt	Closed
Division	Helibase	Safety Zone	Uncontrolled Fire Edge	Proposed Dozer Line	Forest Trail	Local Streets	Paved	4WD
ICP	Camp	Repeater	Completed Dozer Line	Completed Line				

0 0.25 0.5 0.75 1 Miles

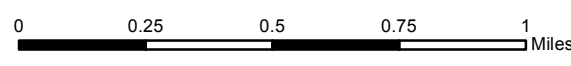
UTM Zone 10N  
NAD83  
TEAM 5





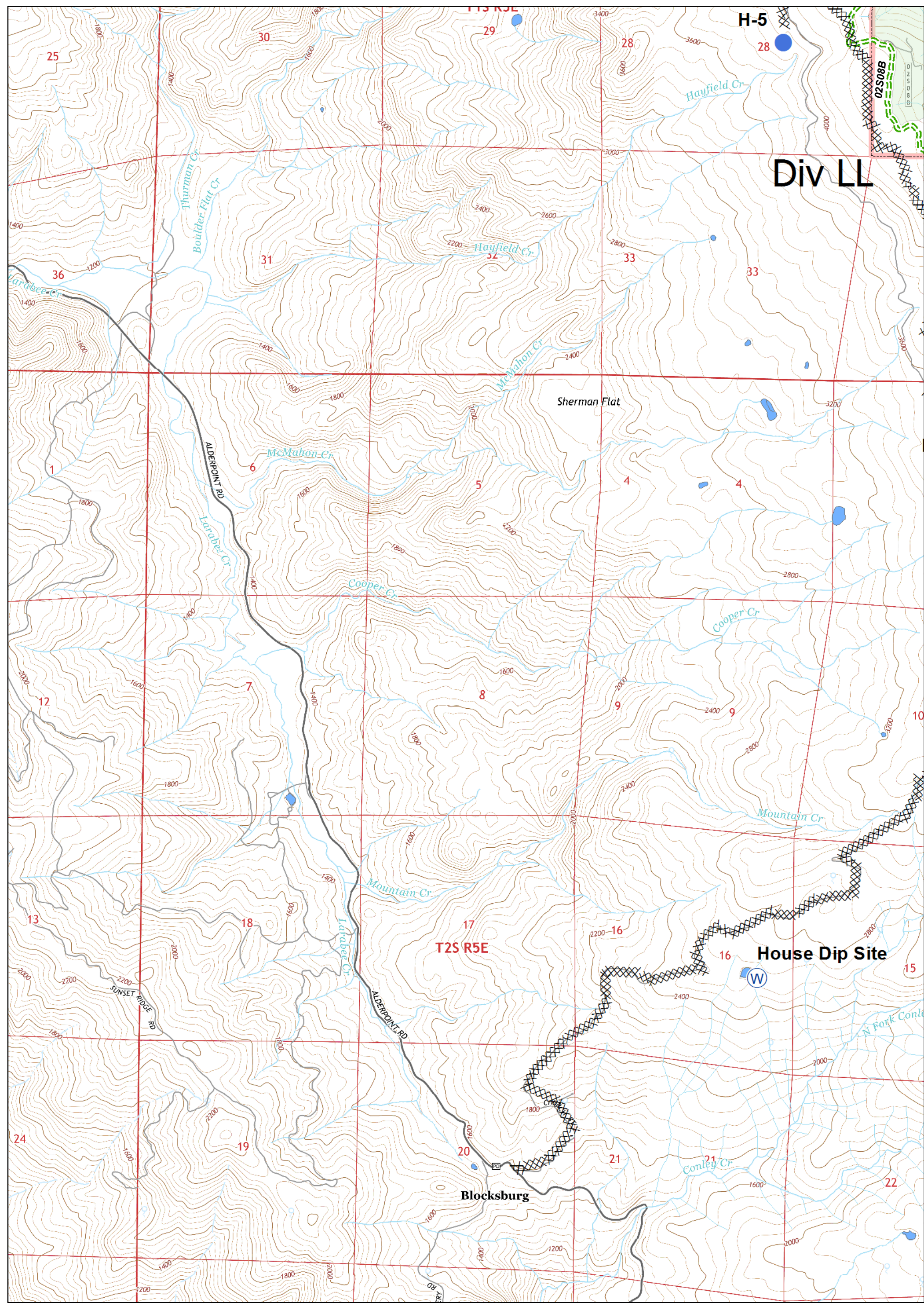
- Branch
- Drop Point
- Structures
- Spot Fire
- Handline
- Division
- Helibase
- Safety Zone
- Uncontrolled Fire Edge
- Proposed Dozer Line
- Water Source
- Completed Dozer Line
- Repeater
- Completed Line

- Six Rivers National Forest Administrative Boundary
- Forest Trail
- Major Roads
- Local Streets
- Dirt
- Paved
- Closed
- 4WD



UTM Zone 10N  
NAD83  
TEAM 5

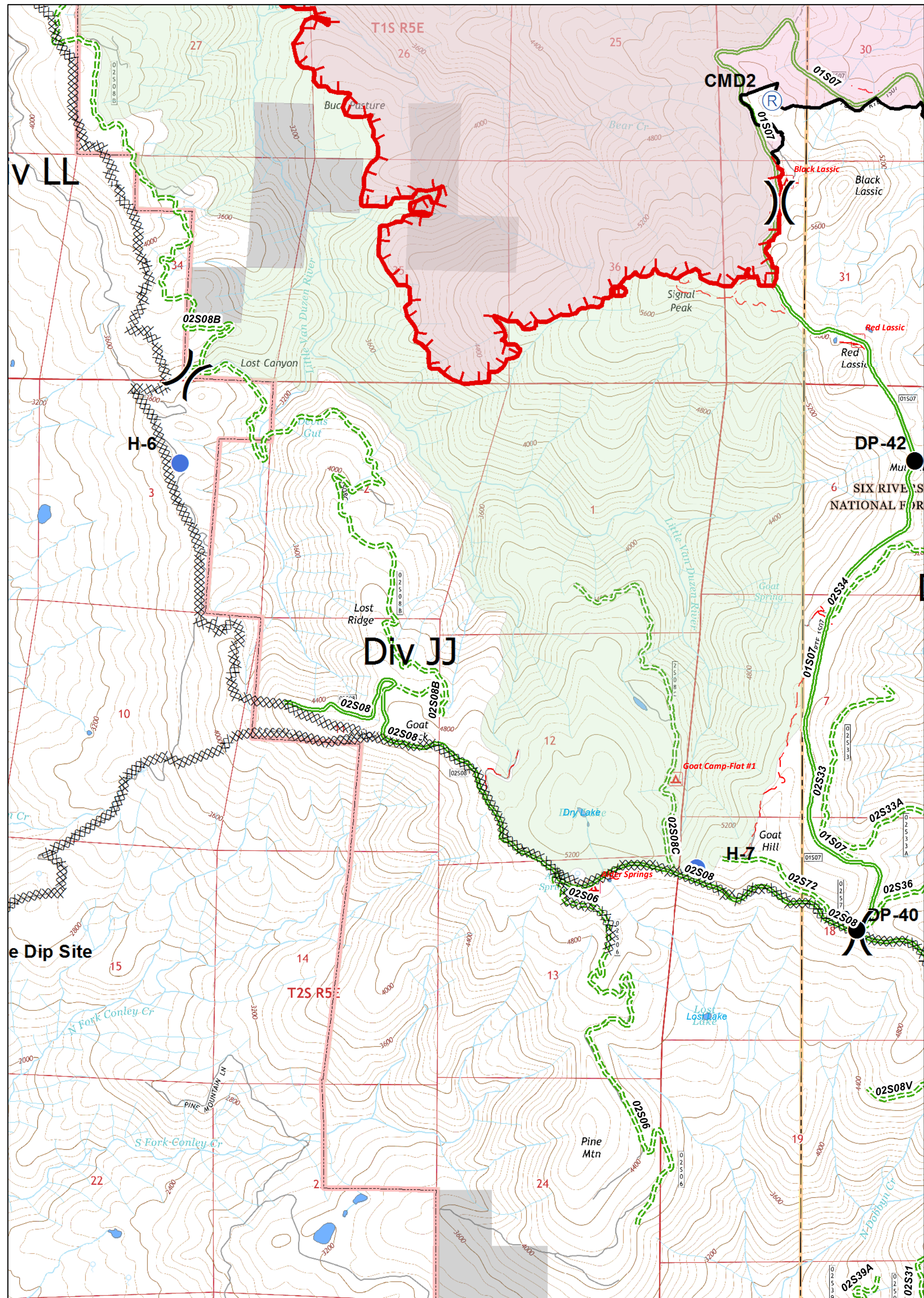




Branch	Drop Point	Structures	Spot Fire	H - Handline	Six Rivers National Forest Administrative Boundary	Major Roads	Dirt	Closed
Division	Helibase	Safety Zone	Uncontrolled Fire Edge	Proposed Dozer Line	Forest Trail	Local Streets	Paved	4WD
ICP	Camp	Repeater	Completed Dozer Line	Completed Line				

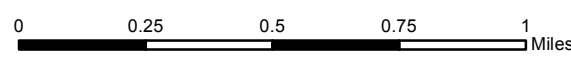
0 0.25 0.5 0.75 1 Miles

UTM Zone 10N  
NAD83  
TEAM 5



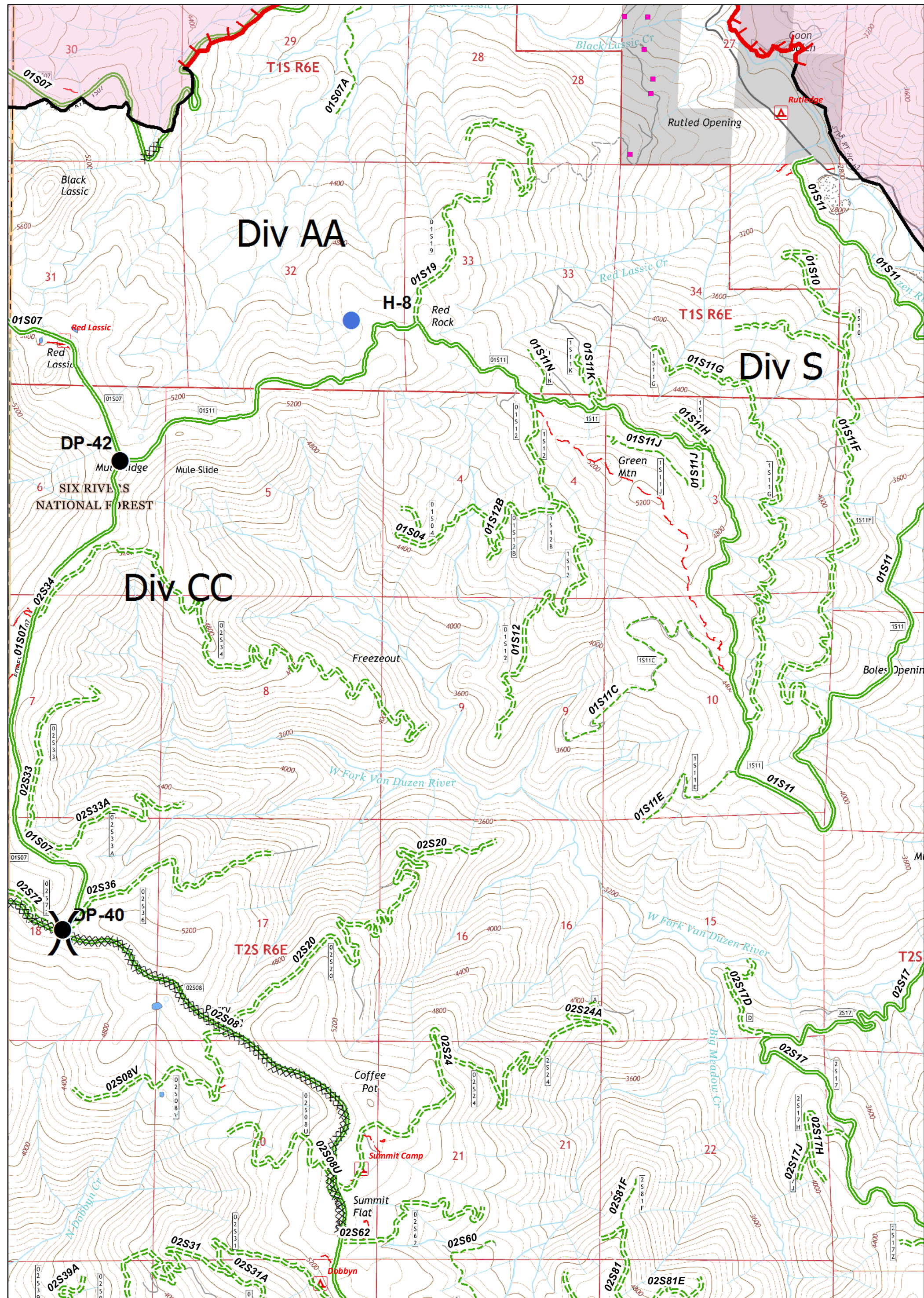
- [ ] Branch
- Drop Point
- ⊕ Helibase
- Helispot
- Ⓢ Camp
- Structures
- ▲ Safety Zone
- Ⓜ Water Source
- ♂ Spot Fire
- ⚡ Uncontrolled Fire Edge
- ⊗ Completed Dozer Line
- ⊗ Proposed Dozer Line
- ⊗ Completed Line
- H - Handline
- Ⓧ Forest Trail

- ⬡ Six Rivers National Forest Administrative Boundary
- ⬡ Major Roads
- ⬡ Local Streets
- ⬡ Dirt
- ⬡ Paved
- ⬡ Closed
- ⬡ 4WD



UTM Zone 10N  
NAD83  
TEAM 5

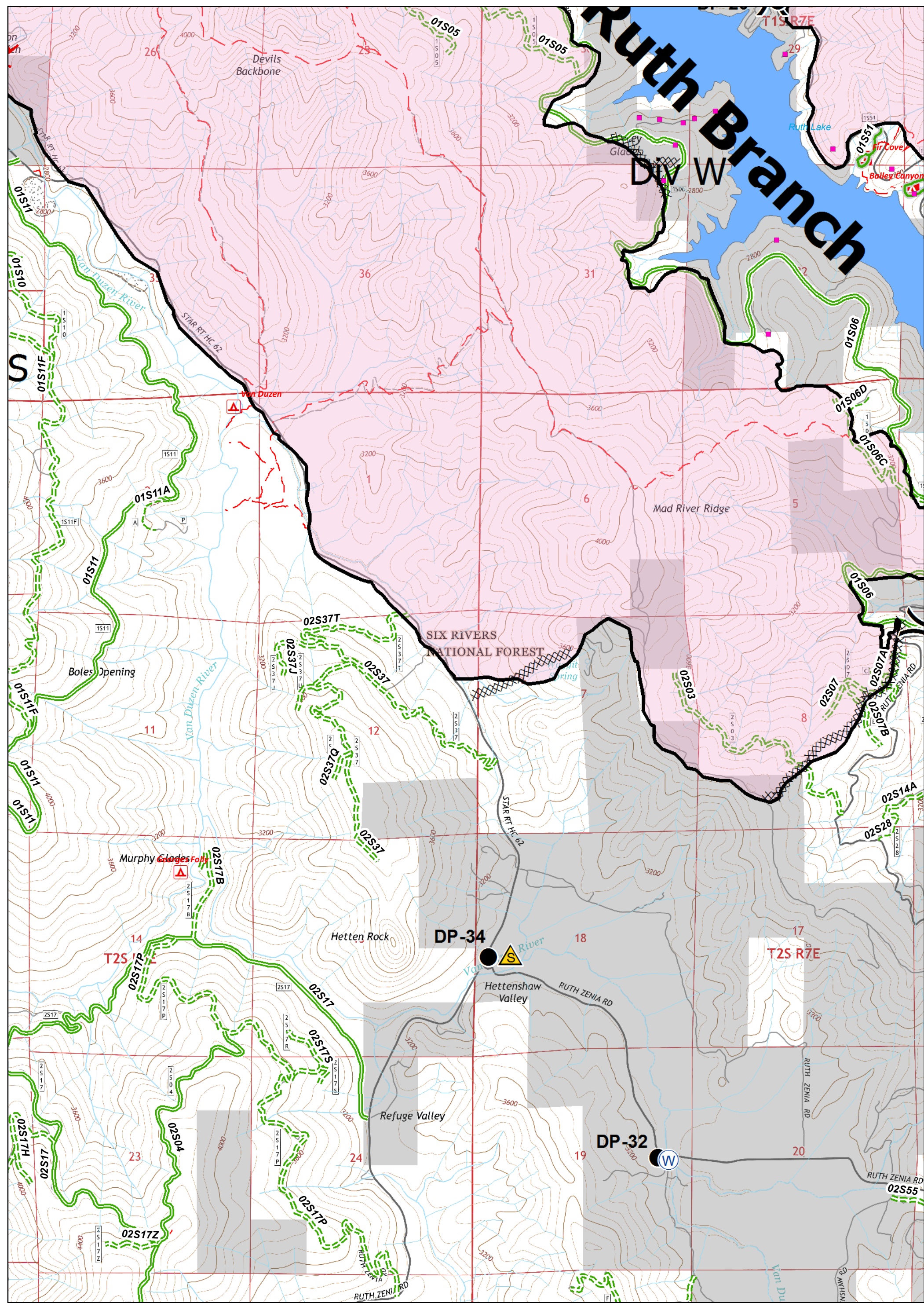




[ ] Branch	● Drop Point	■ Structures	♂ Spot Fire	H - Handline	▭ Six Rivers National Forest Administrative Boundary	▬ Major Roads	▬ Dirt	▬ Closed
( ) Division	⊙ Helibase	⚠ Safety Zone	⚡ Uncontrolled Fire Edge	⊙ Proposed Dozer Line	▬ Forest Trail	▬ Local Streets	▬ Paved	▬ 4WD
■ ICP	⊙ Camp	⊙ Repeater	⊗ Completed Dozer Line	▬ Completed Line				

0 0.25 0.5 0.75 1 Miles

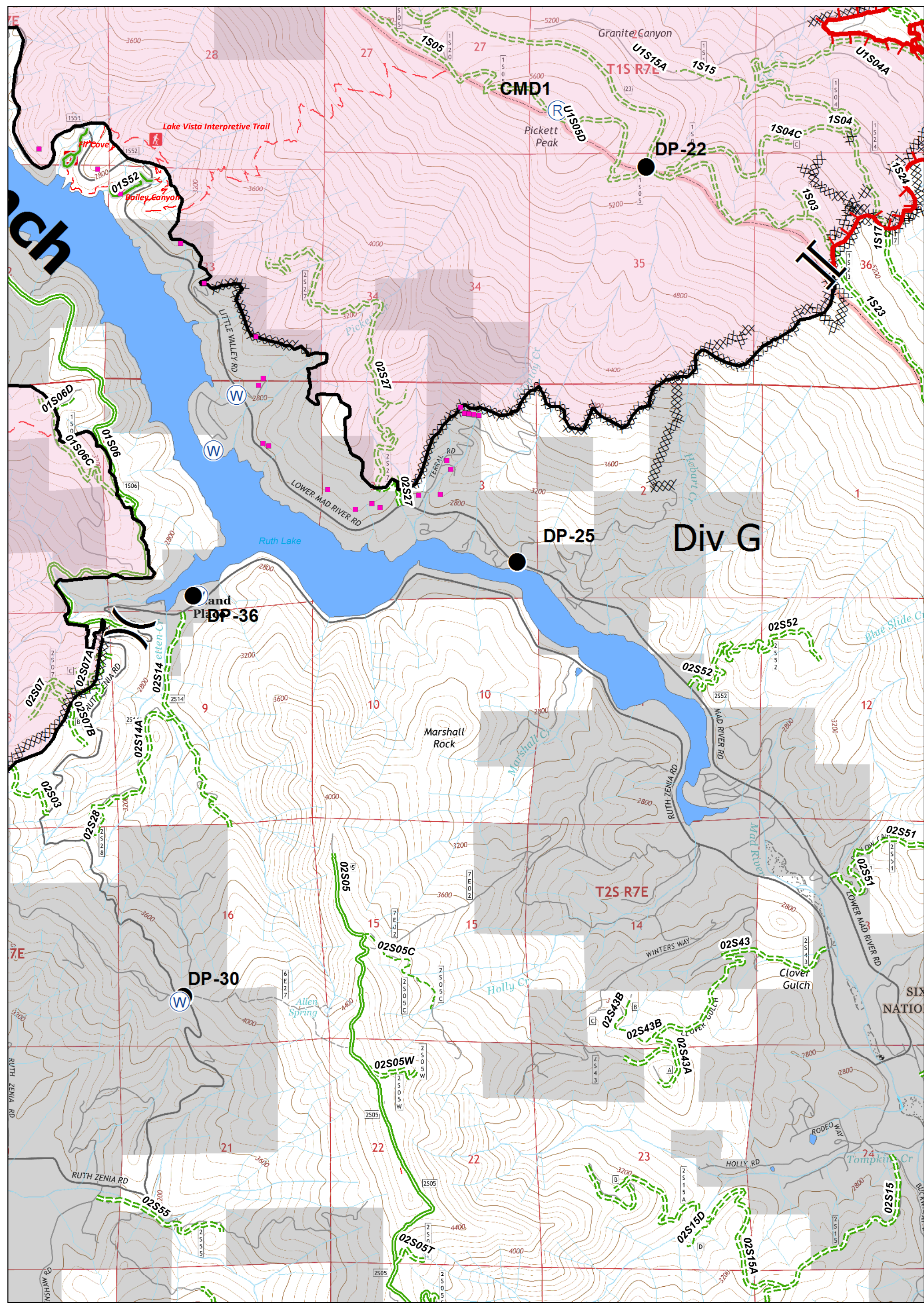
UTM Zone 10N  
NAD83  
TEAM 5



Branch	Drop Point	Structures	Spot Fire	Handline	Six Rivers National Forest Administrative Boundary	Major Roads	Dirt	Closed
Division	Helibase	Safety Zone	Uncontrolled Fire Edge	Proposed Dozer Line	Forest Trail	Local Streets	Paved	4WD
ICP	Camp	Repeater	Completed Dozer Line	Completed Line				

0 0.25 0.5 0.75 1 Miles

UTM Zone 10N  
NAD83  
TEAM 5

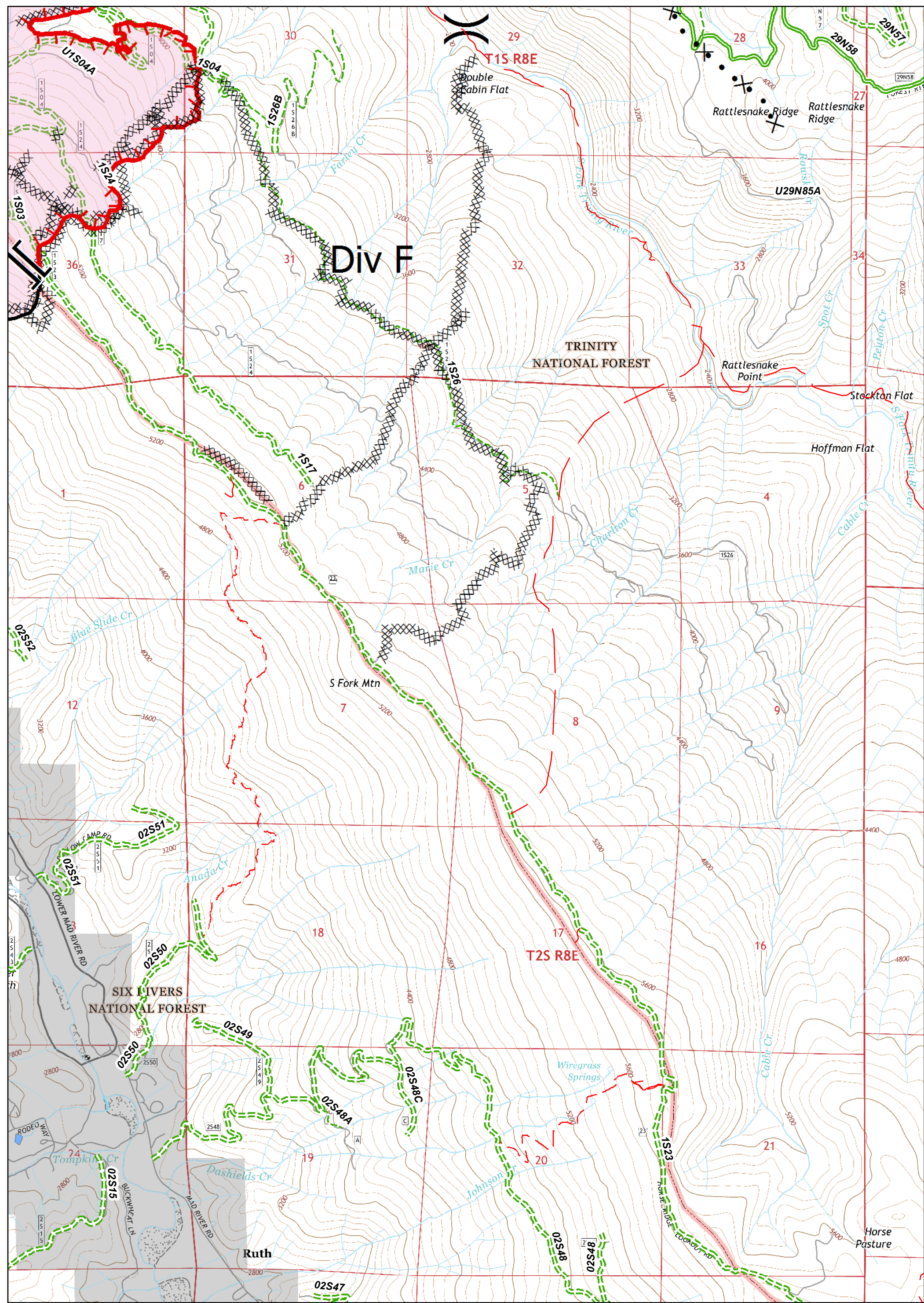


- Branch
- Drop Point
- Structures
- Spot Fire
- Handline
- Helibase
- Safety Zone
- Uncontrolled Fire Edge
- Proposed Dozer Line
- Helispot
- Water Source
- Completed Dozer Line
- Forest Trail
- Camp
- Repeater
- Completed Line

Six Rivers National Forest Administrative Boundary  
 Major Roads  
 Local Streets  
 Dirt  
 Closed  
 Paved  
 4WD

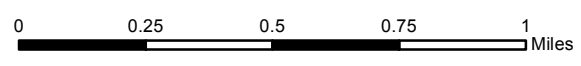
UTM Zone 10N  
NAD83  
TEAM 5

0 0.25 0.5 0.75 1 Miles



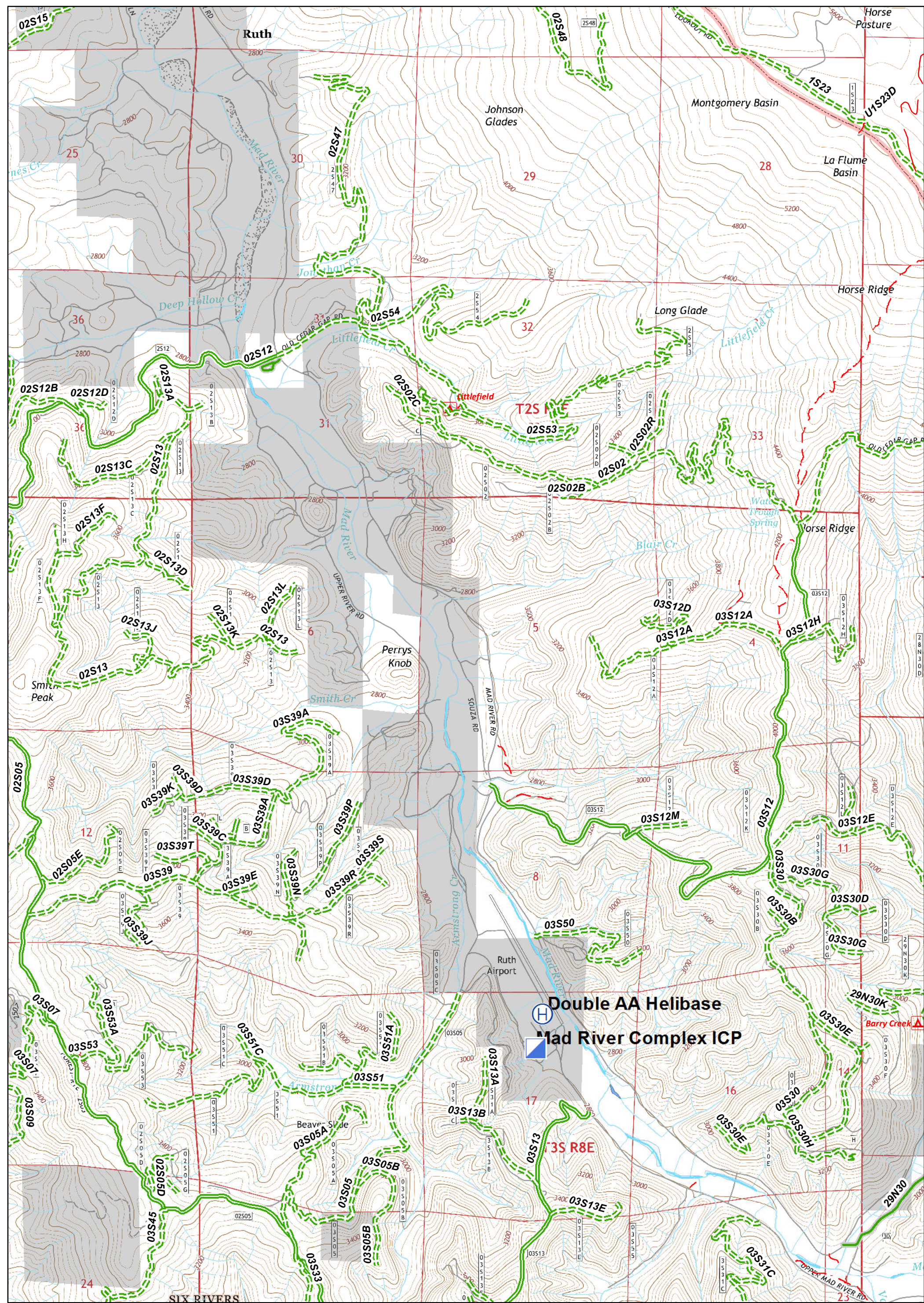
- [ ] Branch
- Drop Point
- ⊕ Helibase
- ⊙ Helispot
- Ⓢ ICP
- Ⓢ Camp
- Ⓢ Repeater
- Ⓢ Structures
- ⚠ Safety Zone
- Ⓢ Water Source
- Ⓢ Spot Fire
- Ⓢ Uncontrolled Fire Edge
- Ⓢ Completed Dozer Line
- Ⓢ Completed Line
- H - Handline
- Ⓢ Proposed Dozer Line

- Ⓢ Six Rivers National Forest Administrative Boundary
- Ⓢ Forest Trail
- Ⓢ Major Roads
- Ⓢ Local Streets
- Ⓢ Dirt
- Ⓢ Paved
- Ⓢ Closed
- Ⓢ 4WD



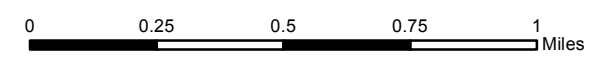
UTM Zone 10N  
NAD83  
TEAM 5





- Branch
- Drop Point
- Structures
- Spot Fire
- Handline
- Helibase
- Safety Zone
- Uncontrolled Fire Edge
- Proposed Dozer Line
- Helispot
- Water Source
- Completed Dozer Line
- Camp
- Repeater
- Completed Line

- Six Rivers National Forest Administrative Boundary
- Major Roads
- Local Streets
- Forest Trail
- Dirt
- Paved
- 4WD



UTM Zone 10N  
NAD83  
TEAM 5

