



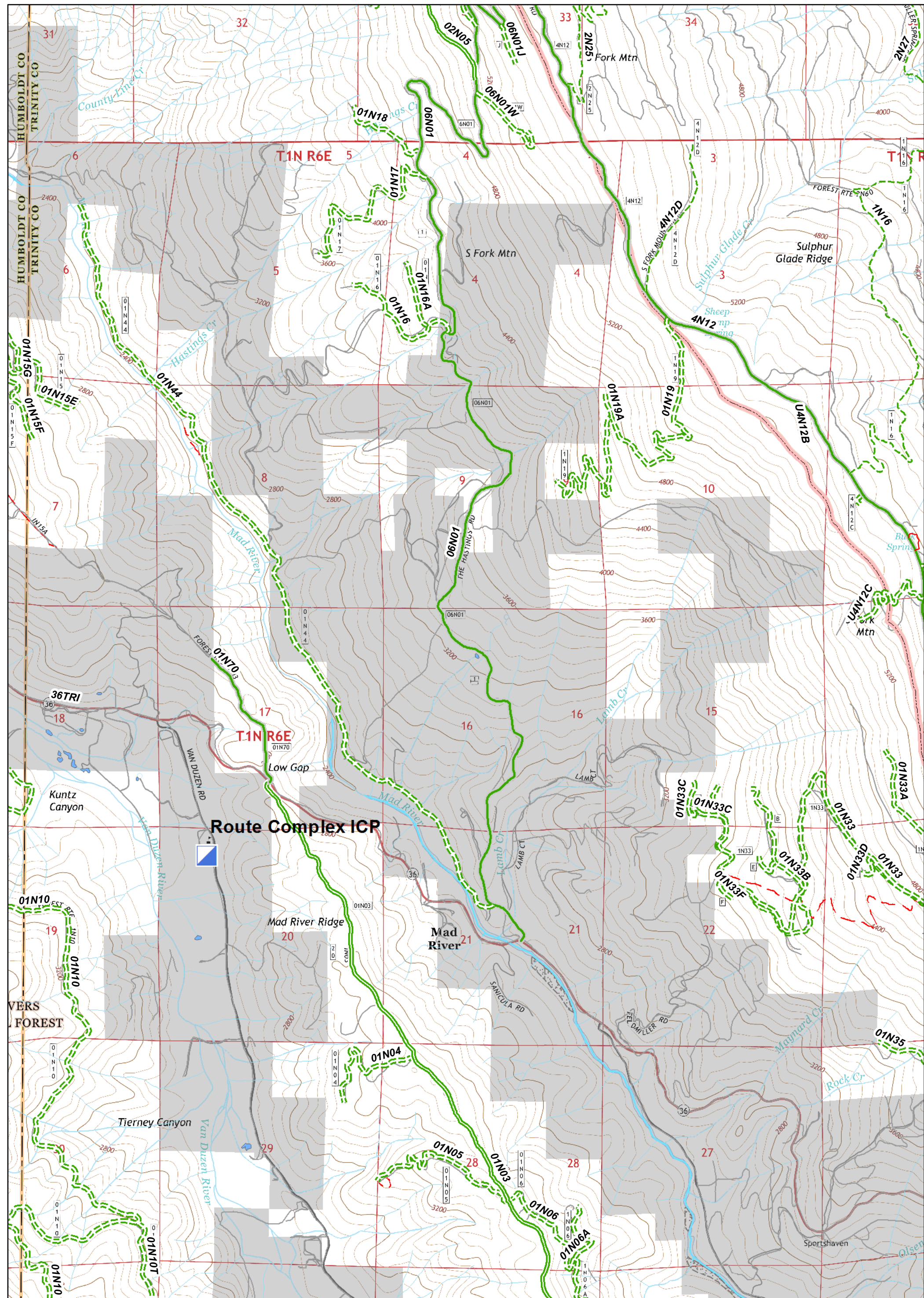


() Division	● Drop Point	■ Structures	— Uncontrolled Fire Edge	▭ Six Rivers National Forest Administrative Boundary	— Major Roads	— Dirt	— Closed
■ ICP	⊕ Helibase	▲ Safety Zone	⊗ Completed Dozer Line	— Forest Trail	— Local Streets	— Paved	— 4WD
⊙ Camp	⊕ Water Source	⊙ Repeater	— Completed Line				
⊙ Staging Area			⊗ Proposed Dozer Line				
			H - Handline				

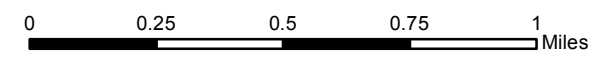
UTM Zone 10N
NAD83

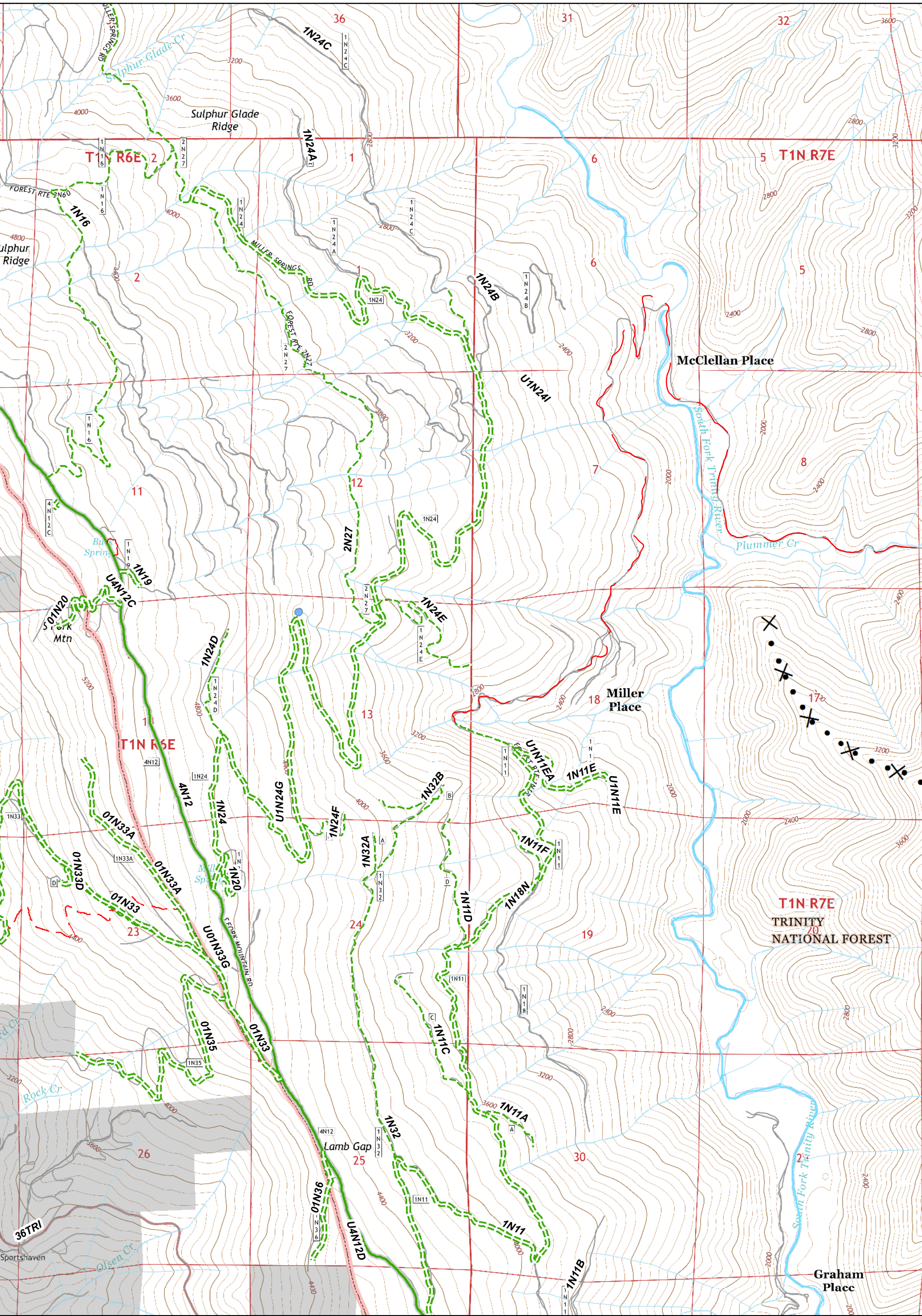


- () Division
- Drop Point
- Structures
- ⊗ Uncontrolled Fire Edge
- ⊗ Proposed Dozer Line
- ⊕ Helibase
- ⚠ Safety Zone
- ⊗ Completed Dozer Line
- H - Handline
- ⊕ Helispot
- ⊕ Water Source
- ⊗ Completed Line
- ⊕ Camp
- ⊕ Repeater
- ⊕ Staging Area

- ⊕ Six Rivers National Forest Administrative Boundary
- ⊕ Forest Trail
- ⊕ Major Roads
- ⊕ Local Streets
- ⊕ Dirt
- ⊕ Paved
- ⊕ Closed
- ⊕ 4WD



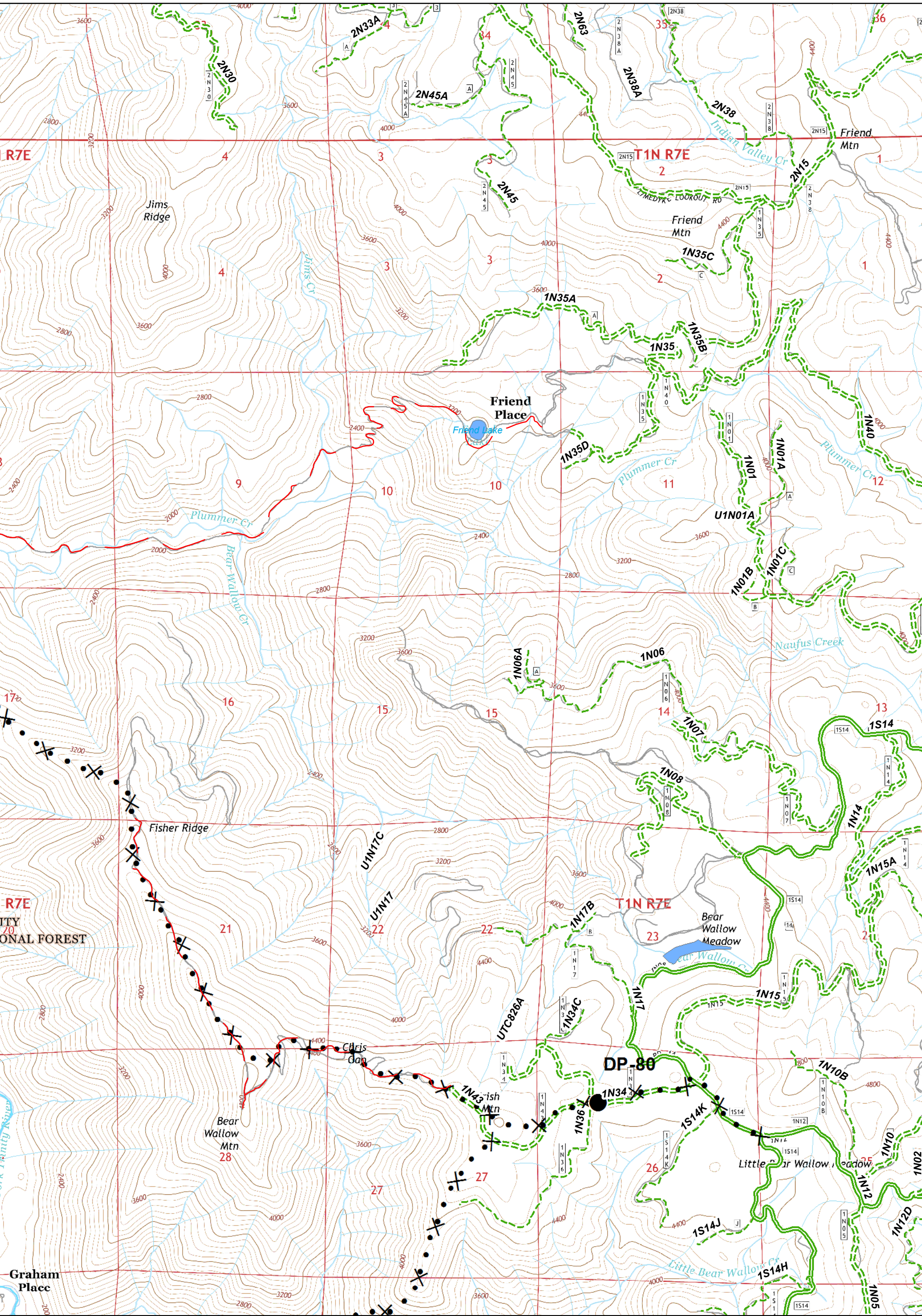
UTM Zone 10N
NAD83



() Division	● Drop Point	■ Structures	— Uncontrolled Fire Edge	✕ Proposed Dozer Line	— Six Rivers National Forest Administrative Boundary	— Major Roads	— Dirt	— Closed
■ ICP	⊕ Helibase	▲ Safety Zone	— Completed Dozer Line	H - Handline	— Forest Trail	— Local Streets	— Paved	— 4WD
● Helispot	⊙ Water Source	— Completed Line						
⊙ Camp	⊙ Repeater							
⊙ Staging Area								

0 0.25 0.5 0.75 1 Miles

UTM Zone 10N
NAD83

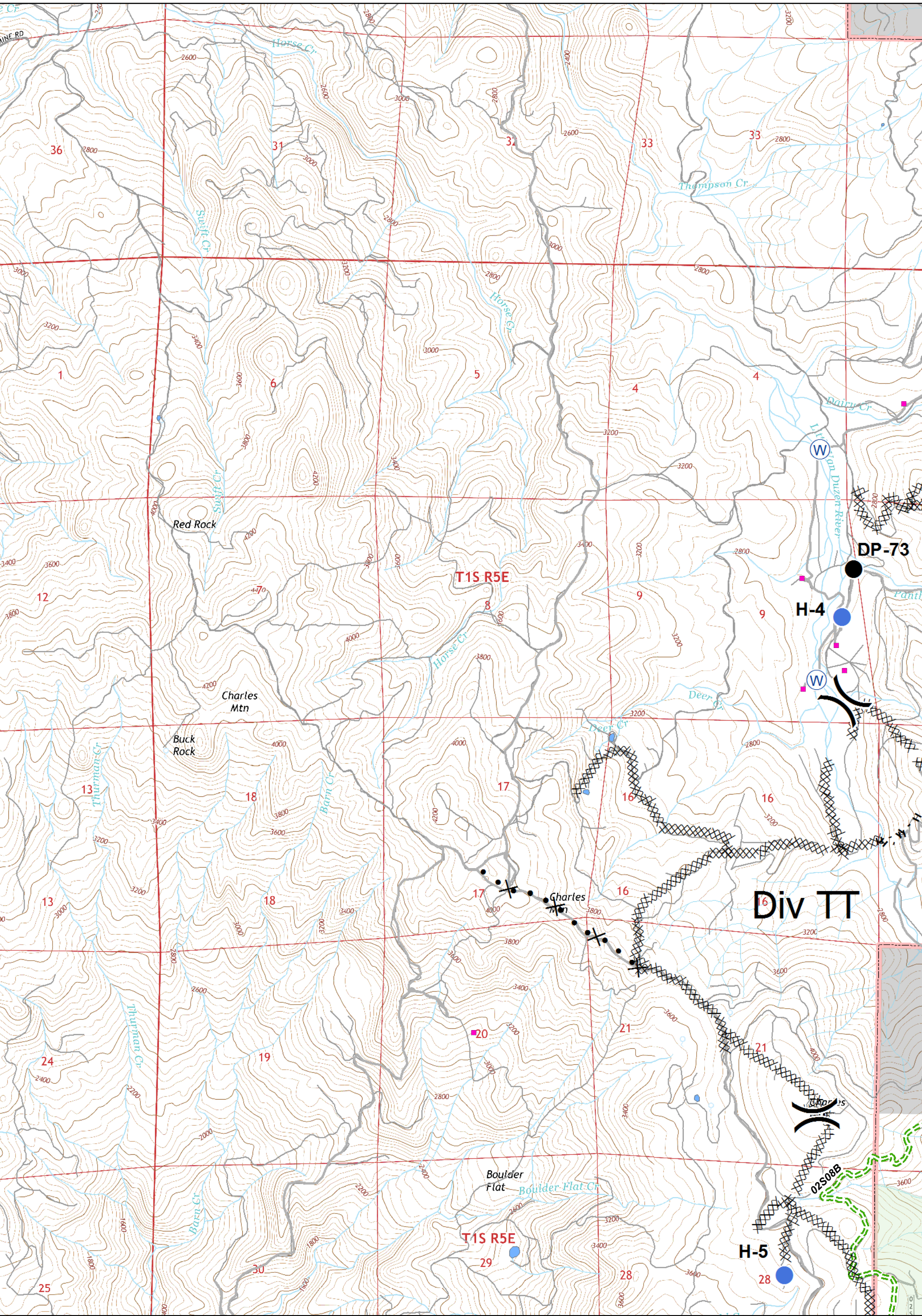


- Division
- Drop Point
- Structures
- Uncontrolled Fire Edge
- Proposed Dozer Line
- ICP
- Helibase
- Safety Zone
- Completed Dozer Line
- Handline
- Water Source
- Completed Line
- Camp
- Repeater
- Staging Area

Six Rivers National Forest Administrative Boundary
 Forest Trail
 Major Roads
 Local Streets
 Dirt
 Paved
 Closed
 4WD

0 0.25 0.5 0.75 1 Miles

UTM Zone 10N
NAD83



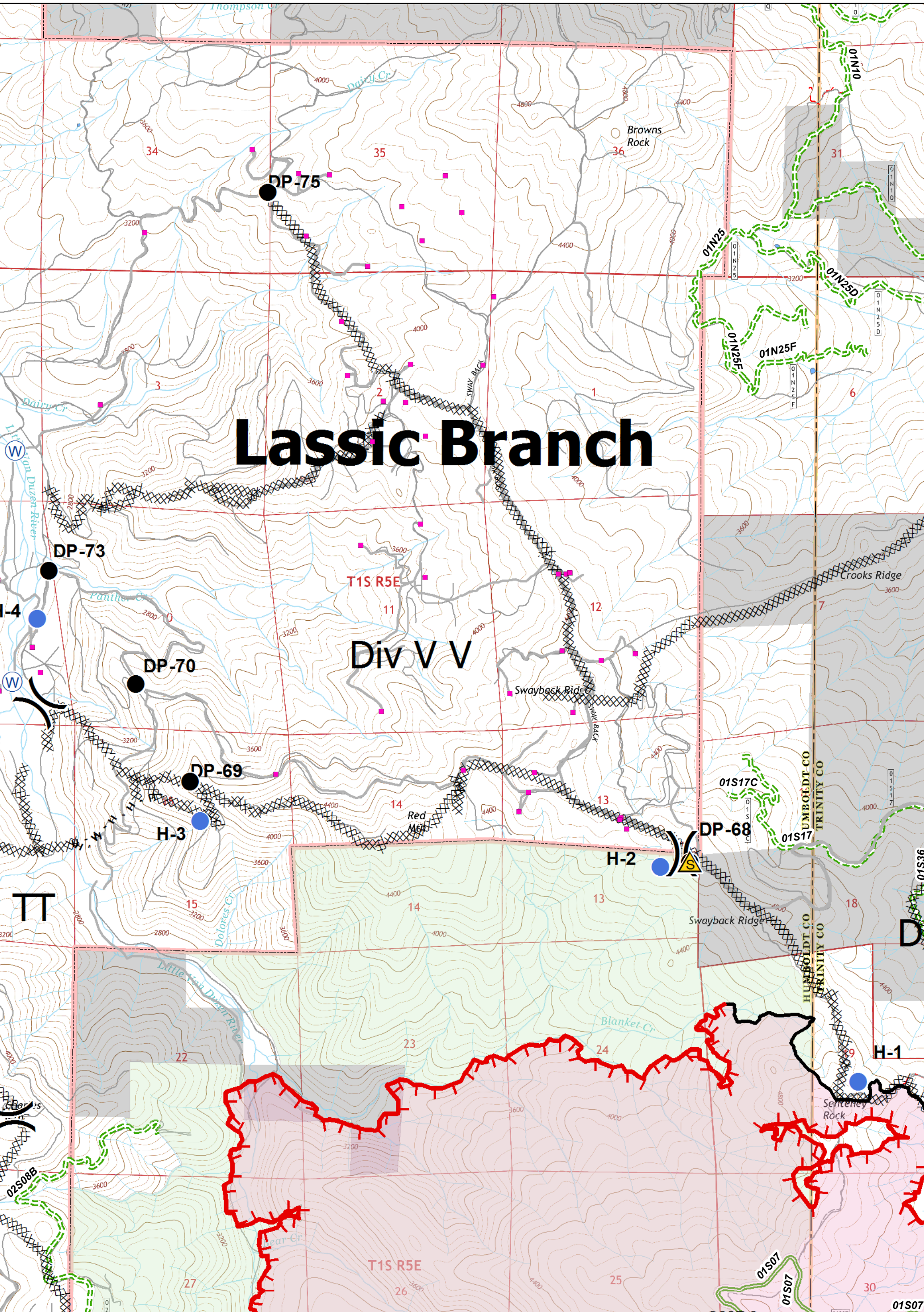
Division	Drop Point	Structures	Uncontrolled Fire Edge	Proposed Dozer Line	Six Rivers National Forest Administrative Boundary	Major Roads	Dirt	Closed
ICP	Helibase	Safety Zone	Completed Dozer Line	Handline	Forest Trail	Local Streets	Paved	4WD
Camp	Repeater	Water Source	Completed Line					
Staging Area								

0 0.25 0.5 0.75 1 Miles

UTM Zone 10N NAD83

Lassic Branch

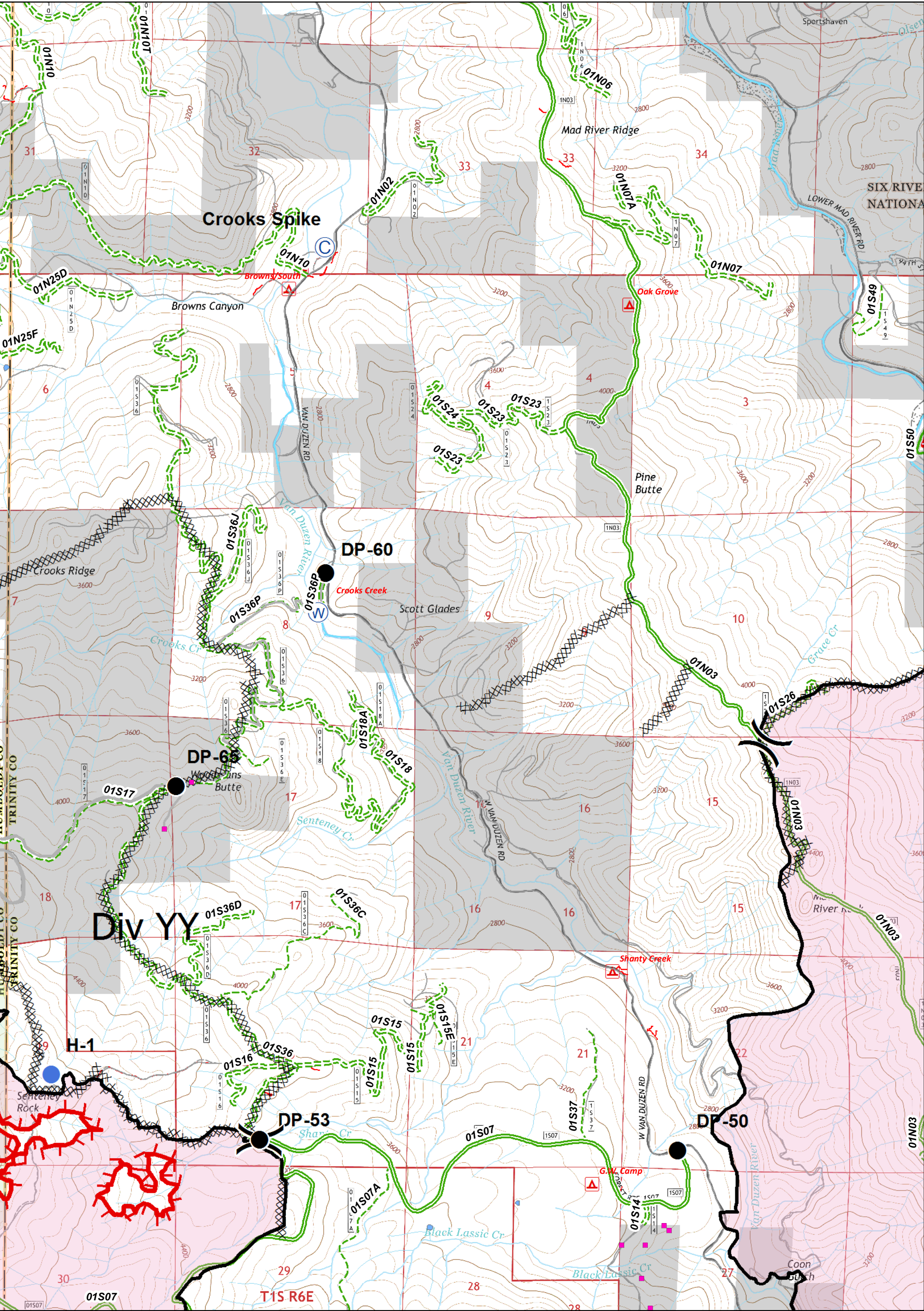
Div V V



() Division	● Drop Point	■ Structures	— Uncontrolled Fire Edge	✕ Proposed Dozer Line	— Six Rivers National Forest Administrative Boundary	— Major Roads	— Dirt	— Closed
■ ICP	⊕ Helibase	⚠ Safety Zone	⊗ Completed Dozer Line	H - Handline	— Forest Trail	— Local Streets	— Paved	— 4WD
⊙ Camp	⊕ Repeater	⊕ Water Source	— Completed Line					
⊕ Staging Area								

0 0.25 0.5 0.75 1 Miles

UTM Zone 10N
NAD83



() Division	● Drop Point	■ Structures	— Uncontrolled Fire Edge	✕ Proposed Dozer Line	▭ Six Rivers National Forest Administrative Boundary	— Major Roads	— Dirt	— Closed
■ ICP	⊕ Helibase	⚠ Safety Zone	⊗ Completed Dozer Line	H - Handline	— Forest Trail	— Local Streets	— Paved	— 4WD
● Helispot	⊕ Water Source	— Completed Line						
⊕ Camp	⊕ Repeater							
⊕ Staging Area								

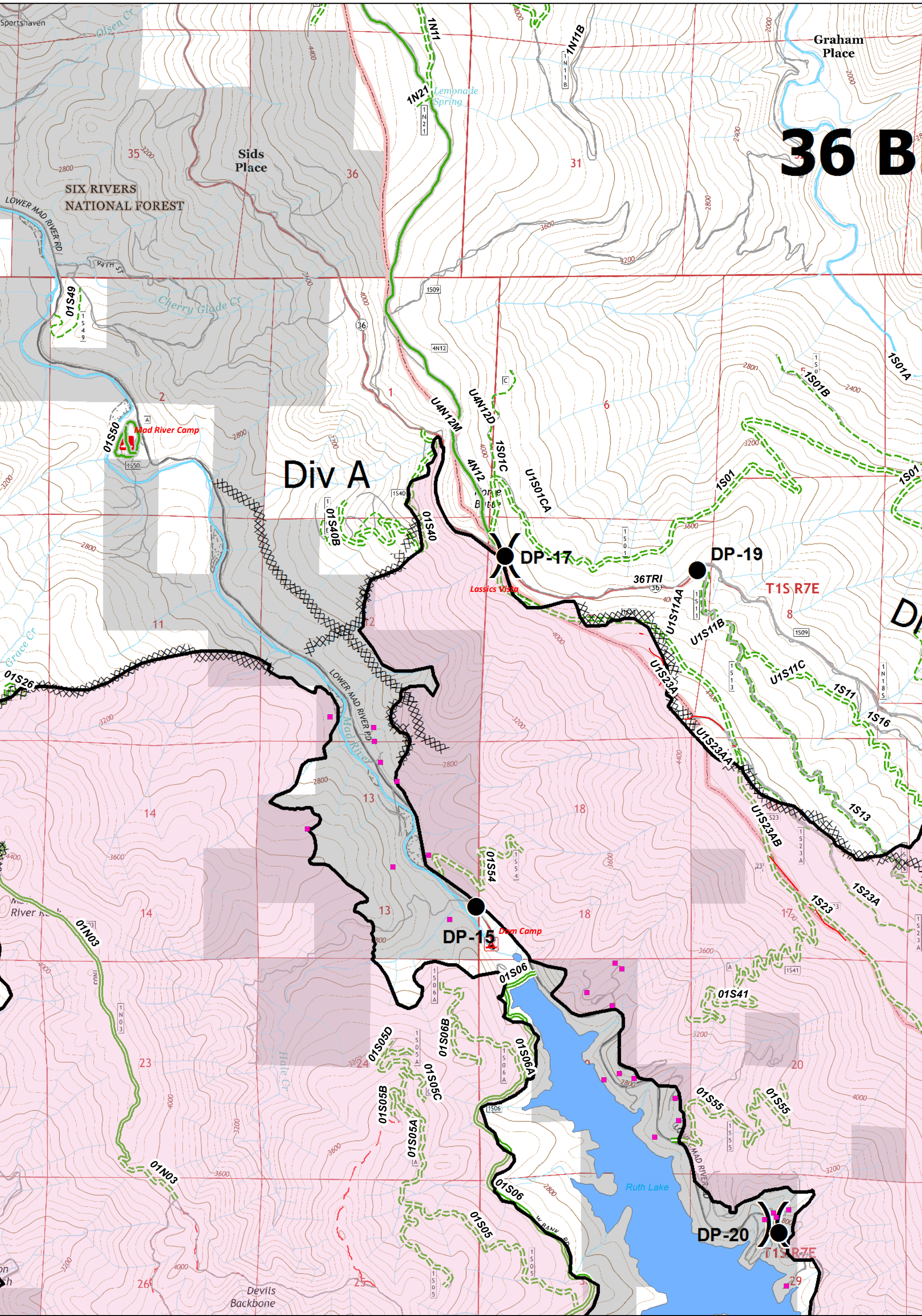
0 0.25 0.5 0.75 1 Miles

UTM Zone 10N
NAD83

36 B

Div A

Div

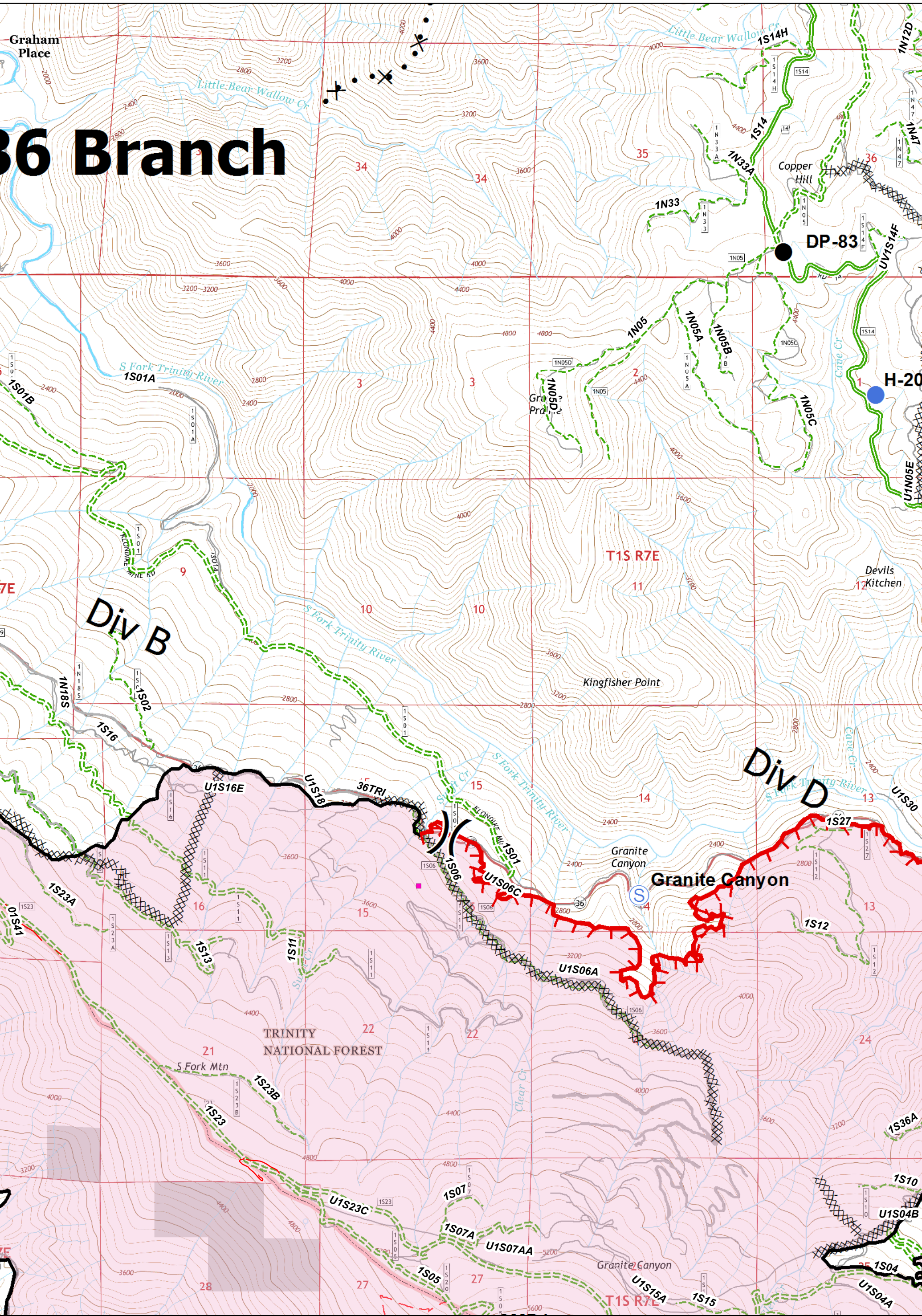


Division	Drop Point	Structures	Uncontrolled Fire Edge	Proposed Dozer Line	Six Rivers National Forest Administrative Boundary	Major Roads	Dirt	Closed
ICP	Helibase	Safety Zone	Completed Dozer Line	Handline	Forest Trail	Local Streets	Paved	4WD
Helispot	Water Source	Completed Line						
Camp	Repeater							
Staging Area								

0 0.25 0.5 0.75 1 Miles

UTM Zone 10N
NAD83

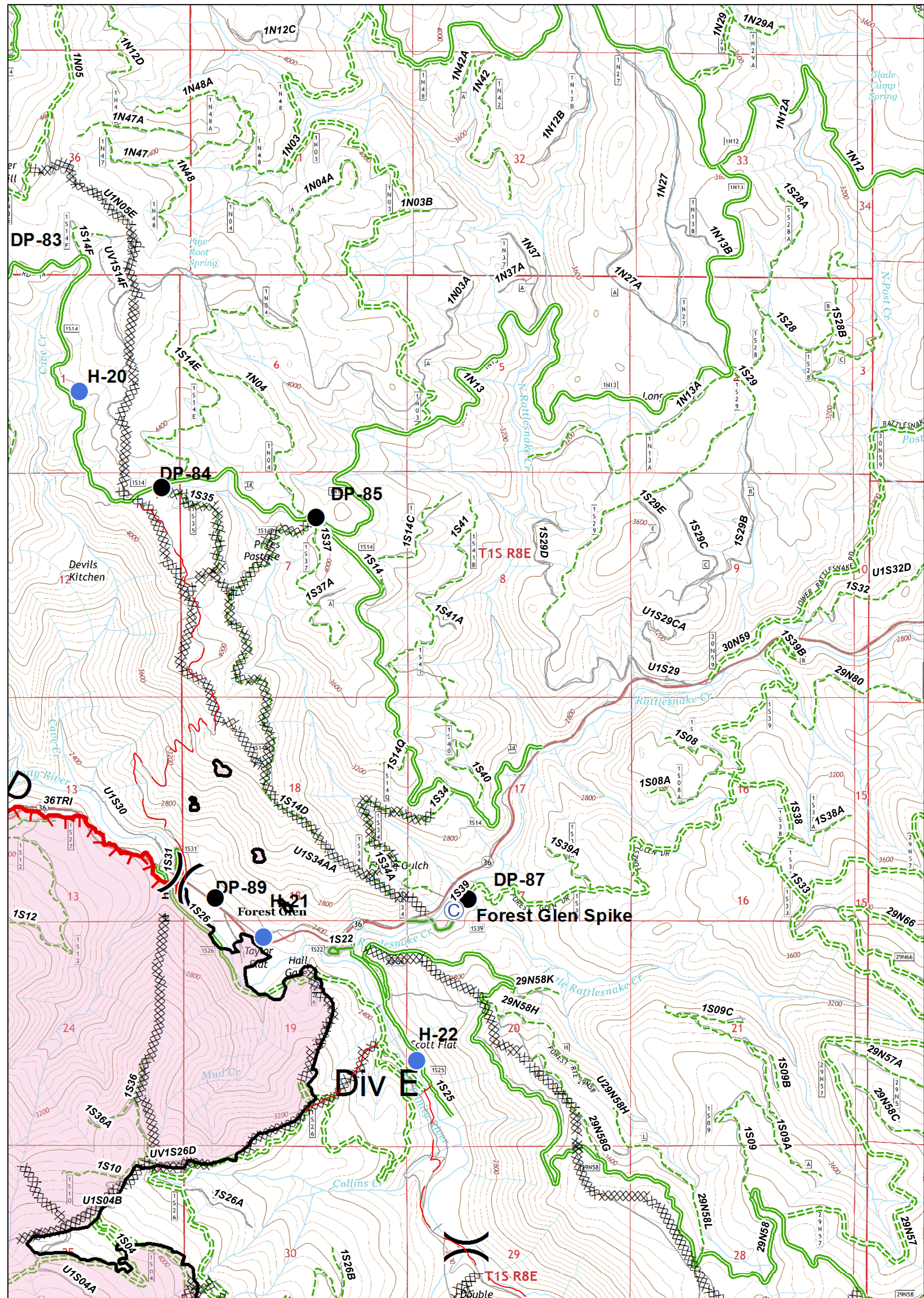
36 Branch



Division	Drop Point	Structures	Uncontrolled Fire Edge	Proposed Dozer Line	Six Rivers National Forest Administrative Boundary	Major Roads	Dirt	Closed
ICP	Helibase	Safety Zone	Completed Dozer Line	Handline	Forest Trail	Local Streets	Paved	4WD
Camp	Repeater	Water Source	Completed Line					

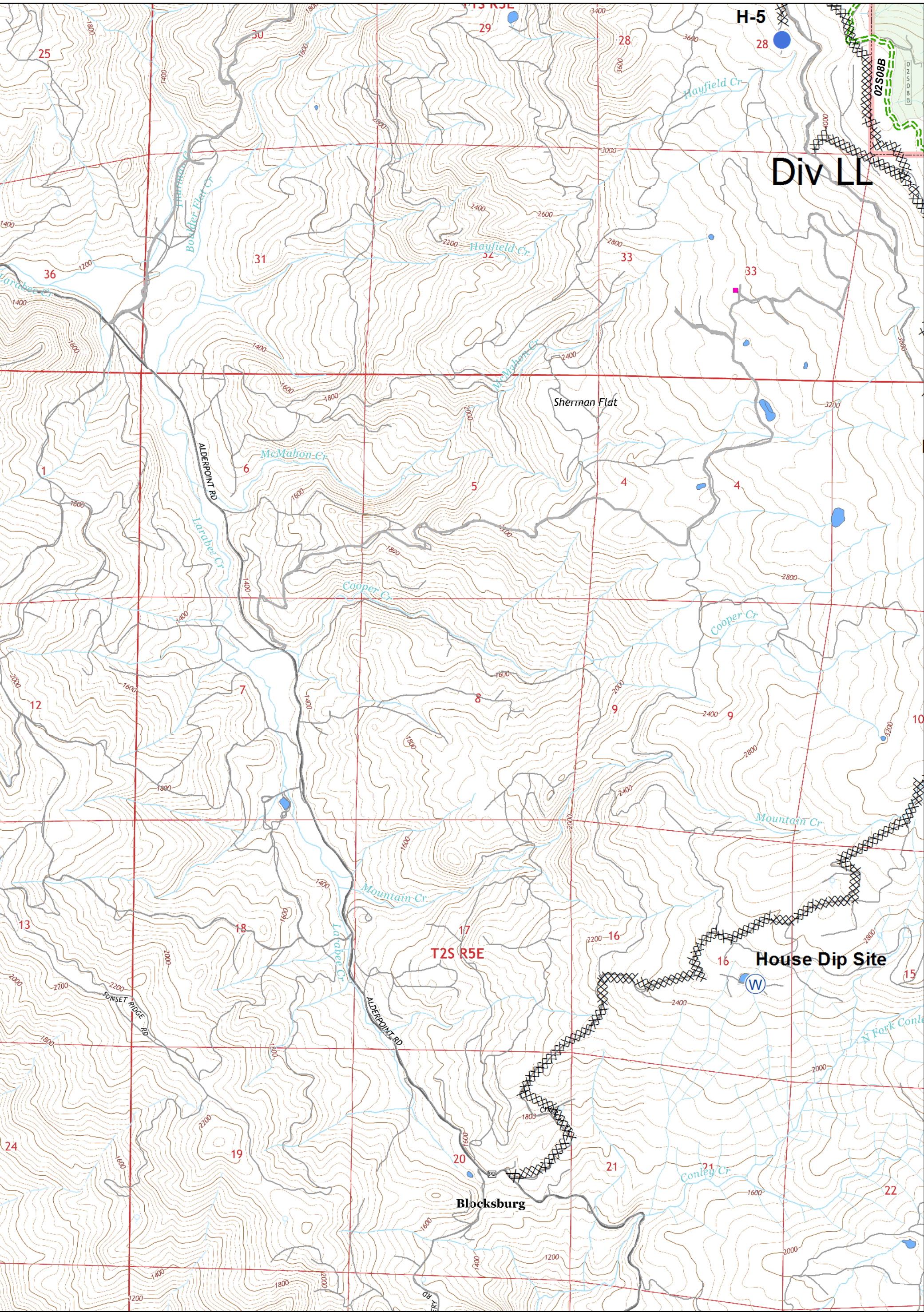
0 0.25 0.5 0.75 1 Miles

UTM Zone 10N
NAD83



Division	Drop Point	Structures	Uncontrolled Fire Edge	Proposed Dozer Line	Six Rivers National Forest Administrative Boundary	Major Roads	Dirt	Closed
ICP	Helibase	Safety Zone	Completed Dozer Line	Handline	Forest Trail	Local Streets	Paved	4WD
Helispot	Water Source	Completed Line						
Camp	Repeater							
Staging Area								

UTM Zone 10N
NAD83



Div LL

House Dip Site


T2S R5E

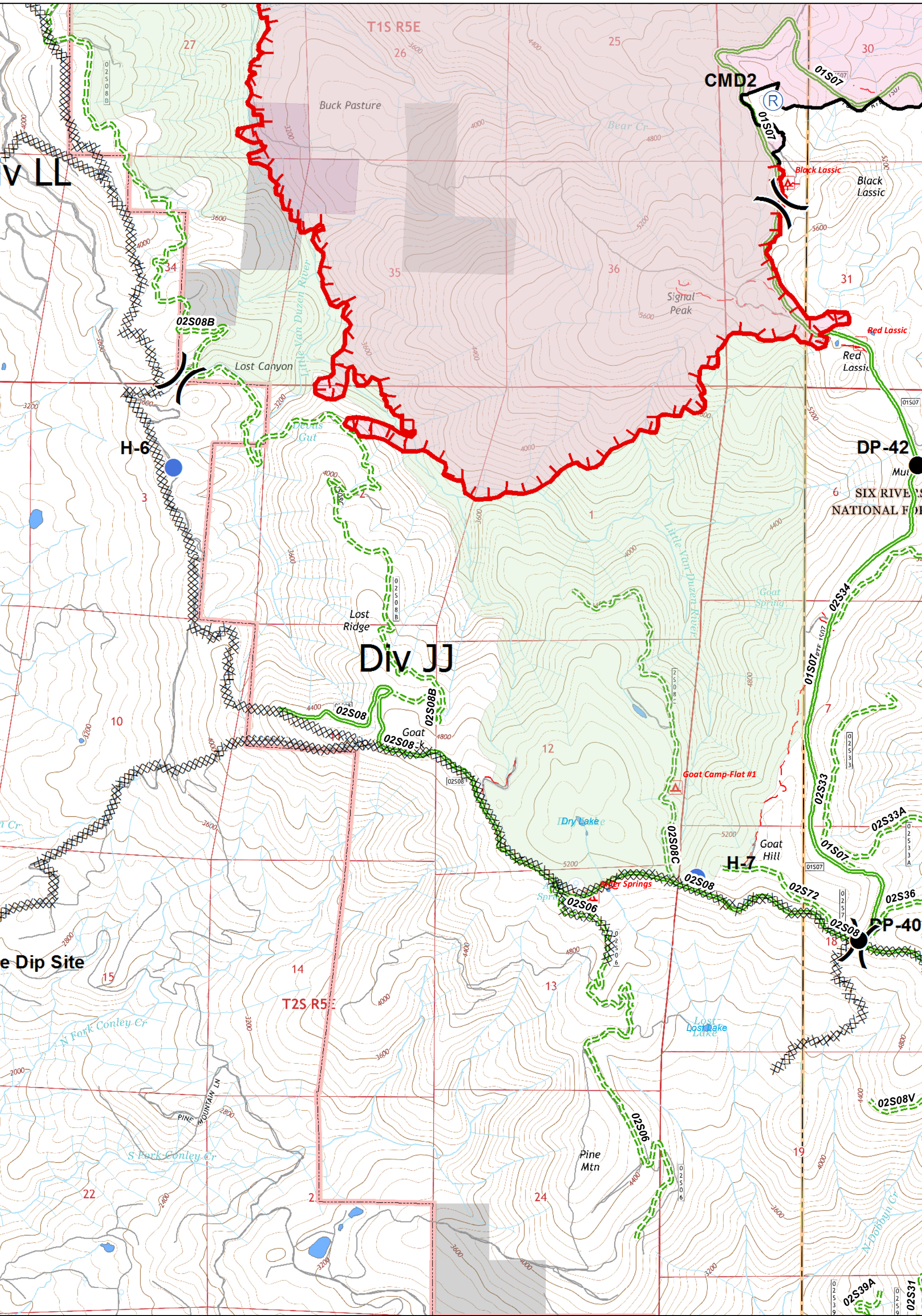
Blocksburg

() Division	● Drop Point	■ Structures	— Uncontrolled Fire Edge	✕ Proposed Dozer Line	▭ Six Rivers National Forest Administrative Boundary	— Major Roads	— Dirt	— Closed
■ ICP	⊕ Helibase	⚠ Safety Zone	⊗ Completed Dozer Line	H - Handline	▭ Forest Trail	— Local Streets	— Paved	— 4WD
● Helispot	⊕ Water Source	⊕ Camp	— Completed Line					
⊕ Repeater	⊕ Staging Area							

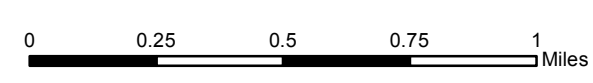
0 0.25 0.5 0.75 1 Miles

UTM Zone 10N
NAD83

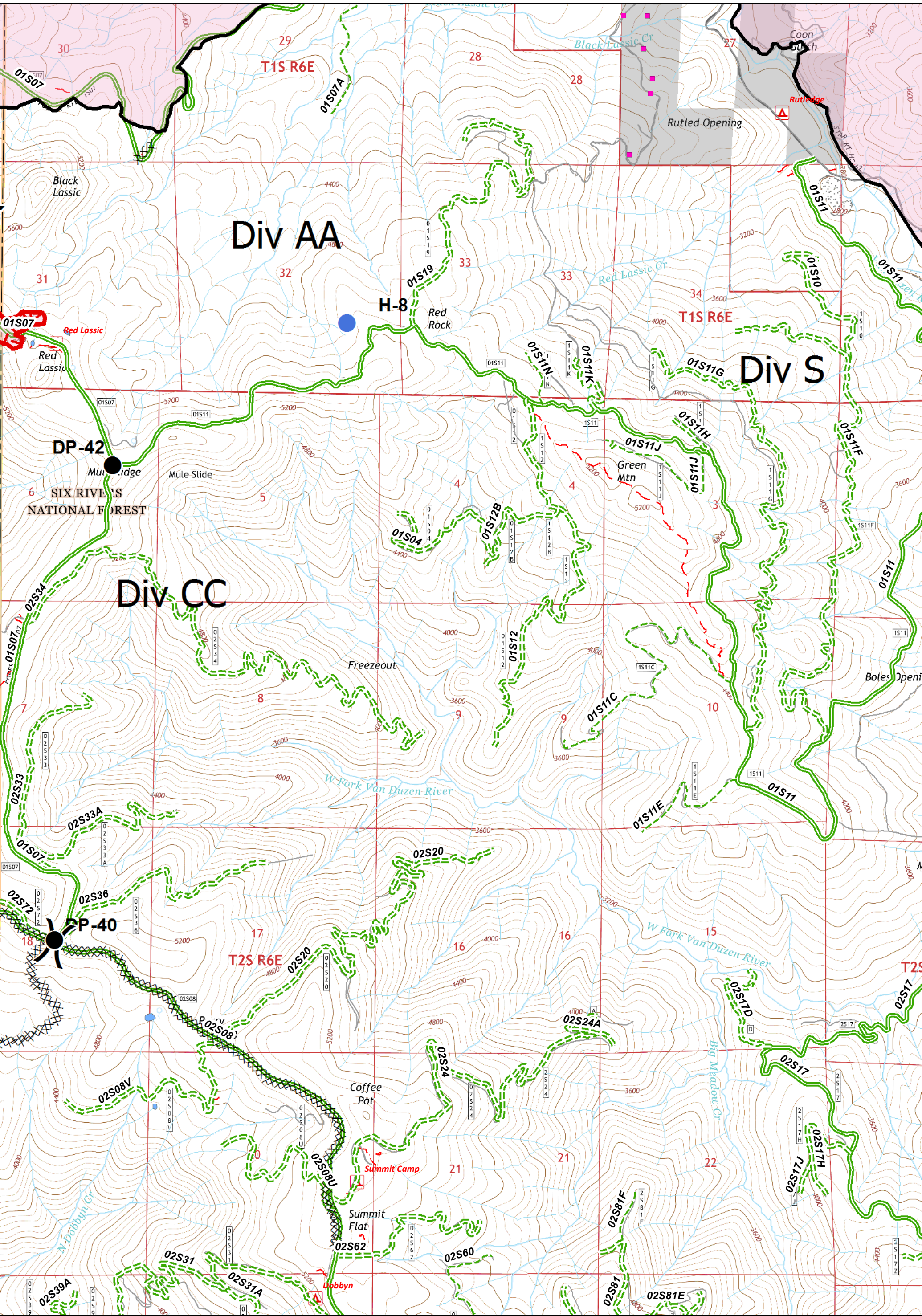




- Division
- Drop Point
- ⊕ Helibase
- Helispot
- Camp
- Staging Area
- Structures
- ▲ Safety Zone
- ⊕ Water Source
- Repeater
- Uncontrolled Fire Edge
- ✕ Proposed Dozer Line
- Completed Dozer Line
- Completed Line
- Handline
- Six Rivers National Forest Administrative Boundary
- Forest Trail
- Major Roads
- Local Streets
- Dirt
- Paved
- Closed
- 4WD



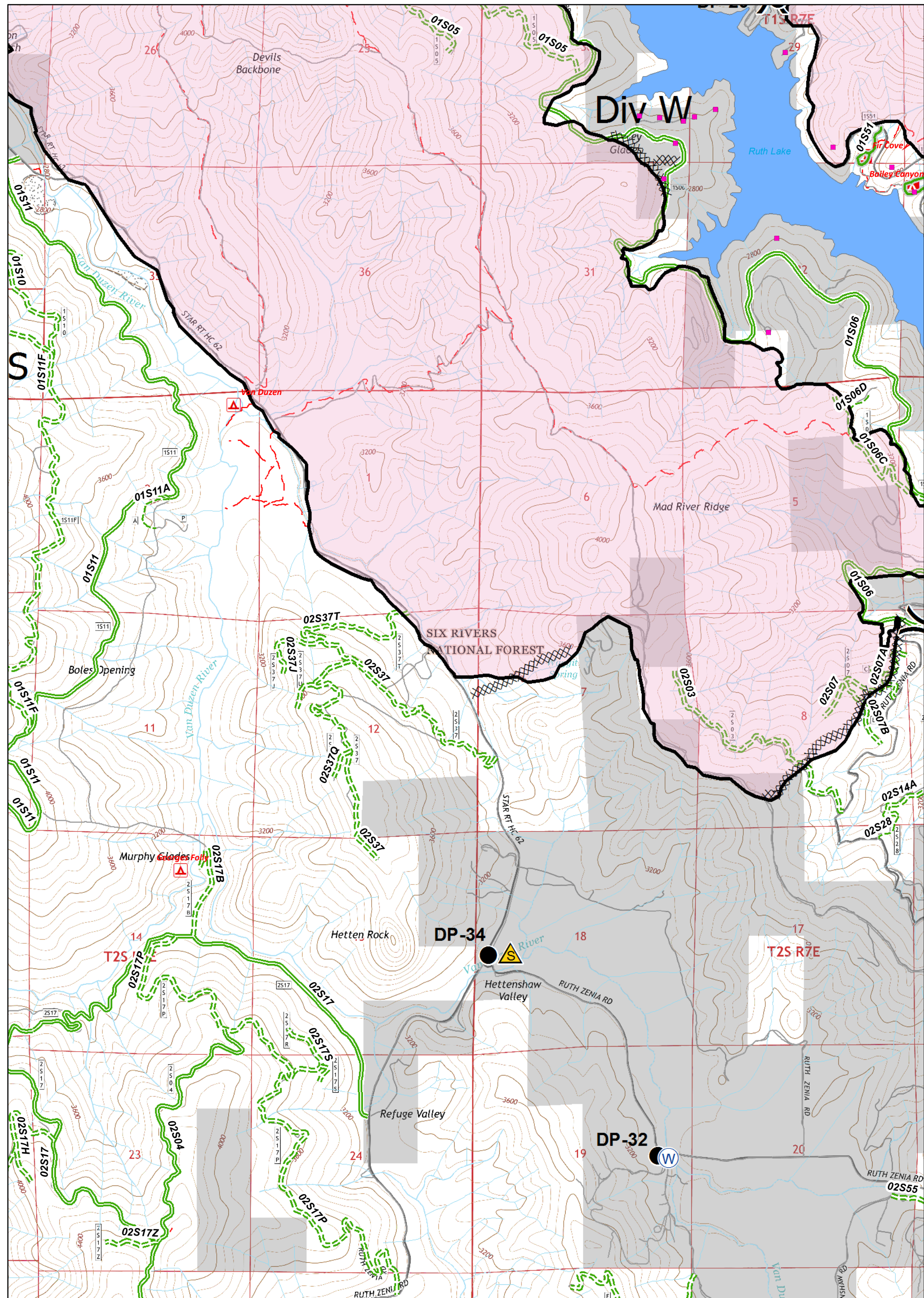
UTM Zone 10N
NAD83



() Division	● Drop Point	■ Structures	— Uncontrolled Fire Edge	✕ Proposed Dozer Line	▭ Six Rivers National Forest Administrative Boundary	— Major Roads	— Dirt	--- Closed
■ ICP	⊕ Helibase	⚠ Safety Zone	--- Completed Dozer Line	H - Handline	--- Forest Trail	— Local Streets	— Paved	--- 4WD
● Camp	⊕ Repeater	⊕ Water Source	— Completed Line					

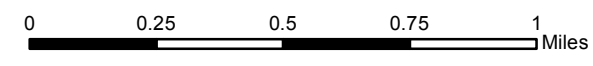
0 0.25 0.5 0.75 1 Miles

UTM Zone 10N
NAD83

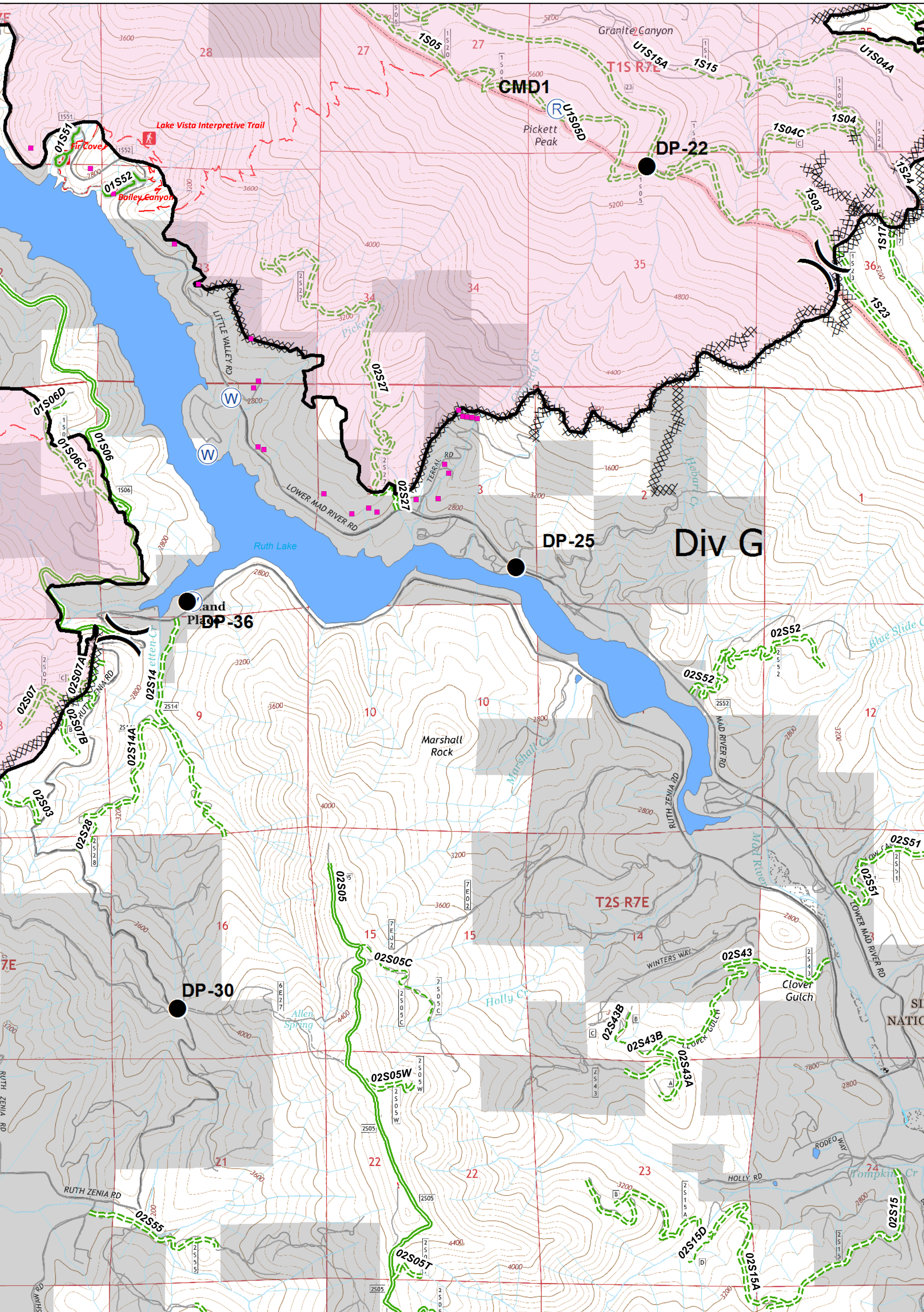


- Division
- Drop Point
- Structures
- Uncontrolled Fire Edge
- Proposed Dozer Line
- ICP
- Helibase
- Safety Zone
- Completed Dozer Line
- Handline
- Water Source
- Camp
- Repeater
- Staging Area

- Six Rivers National Forest Administrative Boundary
- Forest Trail
- Major Roads
- Local Streets
- Dirt
- Paved
- Closed
- 4WD

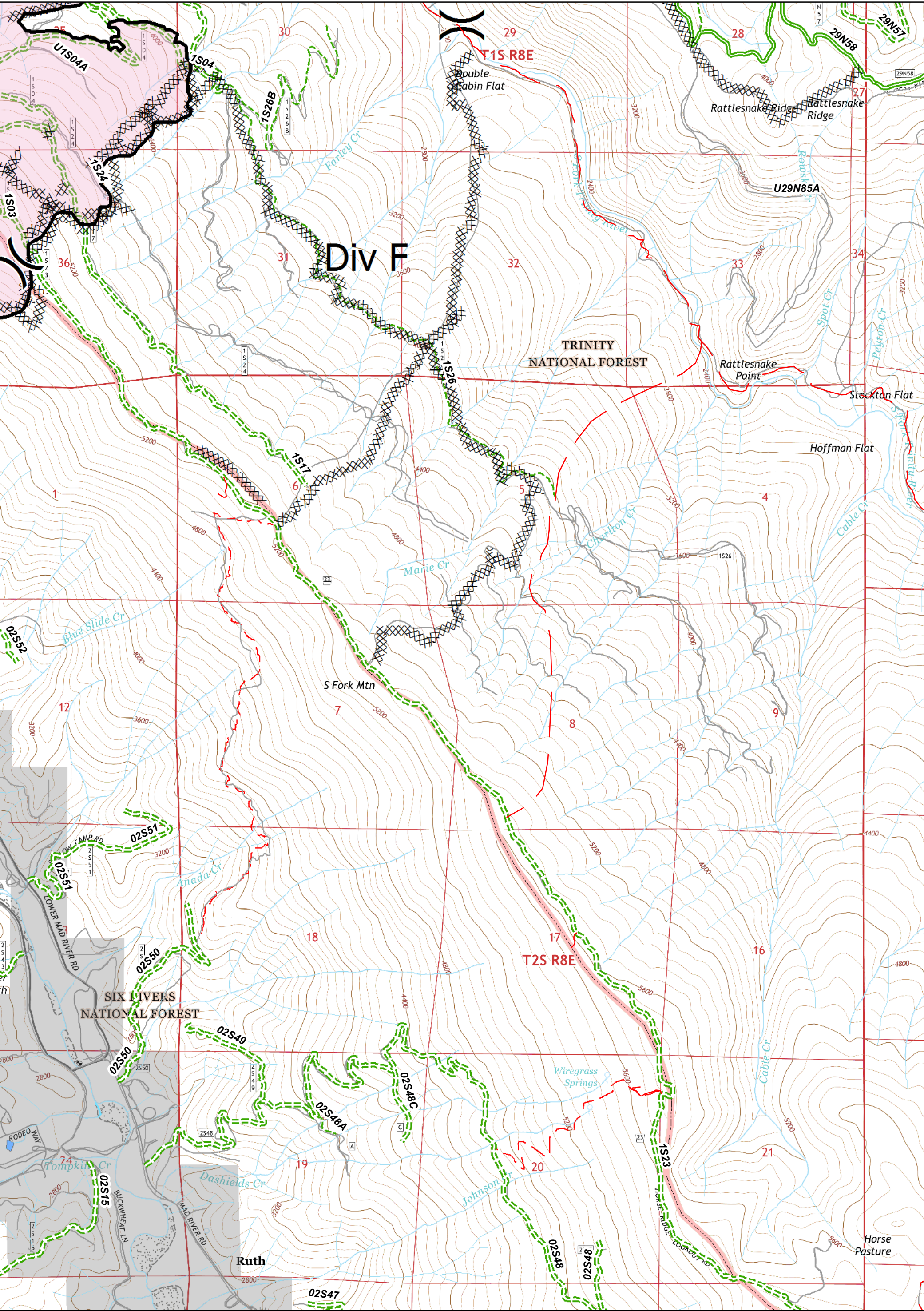


UTM Zone 10N
NAD83



Division	Drop Point	Structures	Uncontrolled Fire Edge	Proposed Dozer Line	Six Rivers National Forest Administrative Boundary	Major Roads	Dirt	Closed
ICP	Helibase	Safety Zone	Completed Dozer Line	Handline	Forest Trail	Local Streets	Paved	4WD
Helispot	Water Source	Completed Line						
Camp	Repeater							
Staging Area								

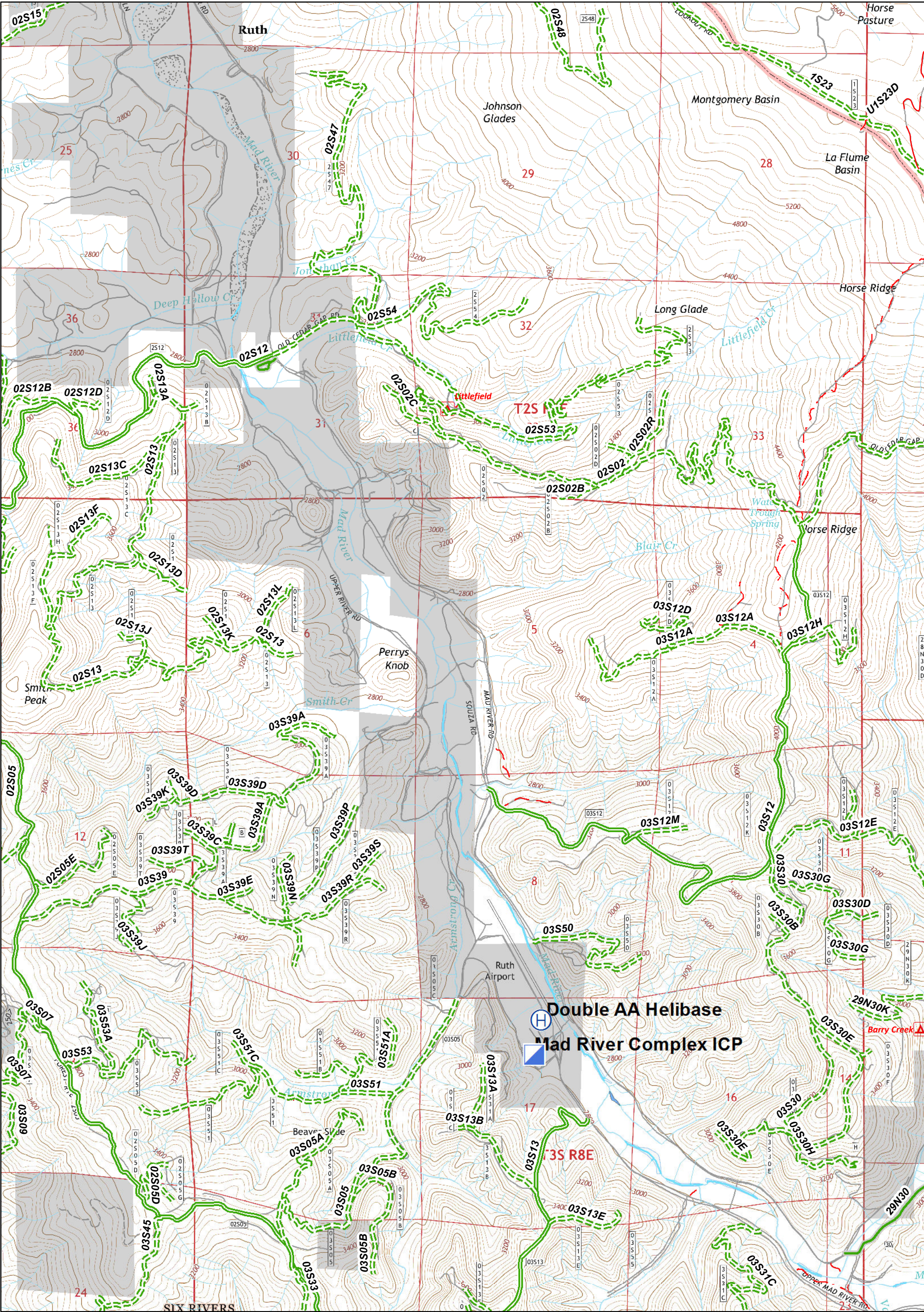
0 0.25 0.5 0.75 1 Miles
 UTM Zone 10N NAD83



() Division	● Drop Point	■ Structures	— Uncontrolled Fire Edge	✕ Proposed Dozer Line	▭ Six Rivers National Forest Administrative Boundary	— Major Roads	— Dirt	— Closed
▭ ICP	⊕ Helibase	▲ Safety Zone	⊗ Completed Dozer Line	H - Handline	— Forest Trail	— Local Streets	— Paved	— 4WD
⊙ Camp	⊕ Water Source	⊙ Repeater	— Completed Line					
⊙ Staging Area								

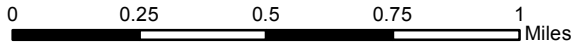
0 0.25 0.5 0.75 1 Miles

UTM Zone 10N
NAD83



- Division
- Drop Point
- Structures
- Uncontrolled Fire Edge
- Proposed Dozer Line
- ICP
- Helibase
- Safety Zone
- Completed Dozer Line
- Handline
- Helispot
- Water Source
- Completed Line
- Camp
- Repeater
- Staging Area

- Six Rivers National Forest Administrative Boundary
- Forest Trail
- Major Roads
- Local Streets
- Dirt
- Paved
- Closed
- 4WD



UTM Zone 10N
NAD83

of

MAD RIVER COMPLEX POINTS		AUGUST 18, 2015	
LABEL	POINT TYPE	LATITUDE	LONGITUDE
CMD1	REPEATER	40 20.75'N	123 21.787'W
CMD2	REPEATER	40 20.738'N	123 32.843'W
DOUBLE AA HELIBASE	HELIBASE	40 12.476'N	123 17.777'W
DP-15	DROP POINT	40 22.417'N	123 26.25'W
DP-17	DROP POINT	40 23.768'N	123 26.11'W
DP-19	DROP POINT	40 23.718'N	123 25.141'W
DP-20	DROP POINT	40 21.167'N	123 24.717'W
DP-22	DROP POINT	40 20.533'N	123 21.333'W
DP-25	DROP POINT	40 18.987'N	123 21.986'W
DP-30	DROP POINT	40 17.286'N	123 23.672'W
DP-32	DROP POINT	40 16.652'N	123 25.3'W
DP-34	DROP POINT	40 17.43'N	123 26.168'W
DP-36	DROP POINT	40 18.851'N	123 23.633'W
DP-40	DROP POINT	40 17.504'N	123 32.386'W
DP-42	DROP POINT	40 19.336'N	123 32.106'W
DP-50	DROP POINT	40 21.447'N	123 29.268'W
DP-53	DROP POINT	40 21.479'N	123 31.38'W
DP-60	DROP POINT	40 23.673'N	123 31.065'W
DP-65	DROP POINT	40 22.845'N	123 31.814'W
DP-68	DROP POINT	40 22.568'N	123 33.286'W
DP-69	DROP POINT	40 22.864'N	123 35.800'W
DP-70	DROP POINT	40 23.238'N	123 36.076'W
DP-73	DROP POINT	40 23.672'N	123 36.516'W
DP-75	DROP POINT	40 25.133'N	123 35.425'W
DP-80	DROP POINT	40 26.436'N	123 21.605'W
DP-83	DROP POINT	40 24.958'N	123 20.661'W
DP-84	DROP POINT	40 24.038'N	123 19.772'W
DP-85	DROP POINT	40 23.922'N	123 18.982'W
DP-87	DROP POINT	40 22.433'N	123 18.2'W
DP-89	DROP POINT	40 22.438'N	123 19.488'W
MAD RIVER COMPLEX ICP	INCIDENT COMMAND POST	40 12.342'N	123 17.81'W
ROUTE COMPLEX ICP	INCIDENT COMMAND POST	40 27.314'N	123 31.728'W
WATER SOURCE	WATER SOURCE	40 19.417'N	123 23.533'W
WATER SOURCE	WATER SOURCE	40 19.633'N	123 23.417'W
SAFETY ZONE	SAFETY ZONE	40 22.568'N	123 33.285'W
SAFETY ZONE	SAFETY ZONE	40 17.438'N	123 26.057'W
SAFETY ZONE	SAFETY ZONE	40 16.655'N	123 4.452'W
CROOKS CAMP	CAMP	40 24.931'N	123 31.075'W
FOREST GLEN SPIKE	CAMP	40 22.39'N	123 18.274'W
WATER SOURCE	WATER SOURCE	40 18.857'N	123 23.603'W
WATER SOURCE	WATER SOURCE	40 16.642'N	123 25.245'W
WATER SOURCE	WATER SOURCE	40 23.519'N	123 31.1'W
WATER SOURCE	WATER SOURCE	40 23.245'N	123 36.697'W
WATER SOURCE	WATER SOURCE	40 24.132'N	123 36.689'W
H-1	HELISPOT	40 21.728'N	123 32.432'W
H-2	HELISPOT	40 22.548'N	123 33.433'W
H-3	HELISPOT	40 22.713'N	123 35.747'W
H-4	HELISPOT	40 23.487'N	123 36.571'W
H-5	HELISPOT	40 20.95'N	123 36.838'W
H-6	HELISPOT	40 19.308'N	123 35.848'W
H-7	HELISPOT	40 17.742'N	123 33.202'W
H-8	HELISPOT	40 19.89'N	123 30.932'W
H-20	HELISPOT	40 24.408'N	123 20.192'W
H-21	HELISPOT	40 22.283' N	123 19.242'W
H-22	HELISPOT	40 21.803'N	123 18.457'W
HOUSE DIP SITE	WATER SOURCE	40 17.300'N	123 36.940'W
GRANITE CANYON	STAGING AREA	40 22.476'N	123 21.377'W

* DATA PROJECTED IN NAD 83 UTM ZONE 10 NORTH LATITUDE AND LONGITUDE IN DEGREES DECIMAL MINUTES FORMAT