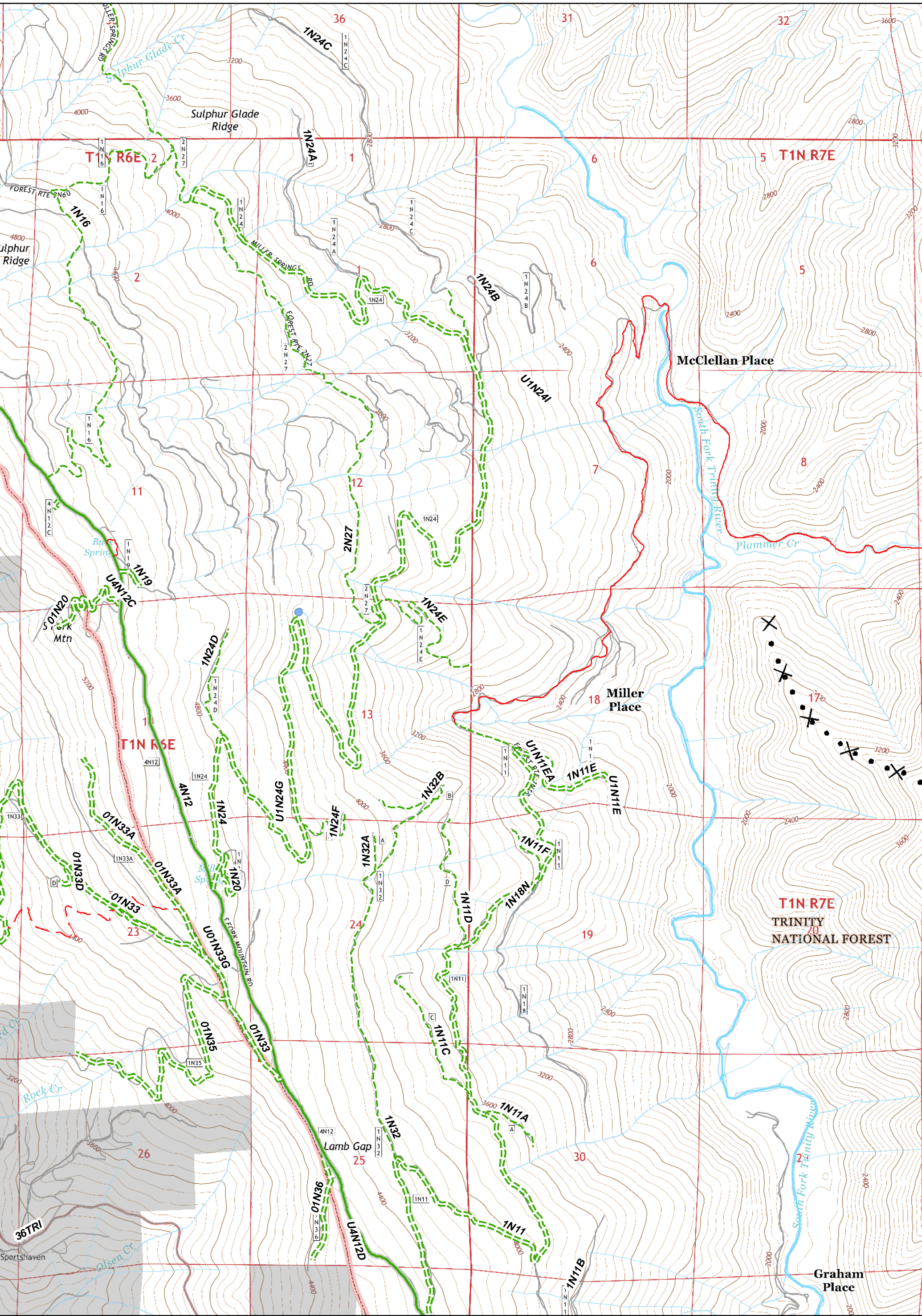


() Division	● Drop Point	■ Structures	— Uncontrolled Fire Edge	✕ Proposed Dozer Line	— Six Rivers National Forest Administrative Boundary	— Major Roads	— Dirt	— Closed
■ ICP	⊕ Helibase	⚠ Safety Zone	— Completed Dozer Line	— Handline	— Forest Trail	— Local Streets	— Paved	— 4WD
● Helispot	⊕ Water Source	⊕ Repeater	— Completed Line					
⊕ Camp								
⊕ Staging Area								

0 0.25 0.5 0.75 1 Miles

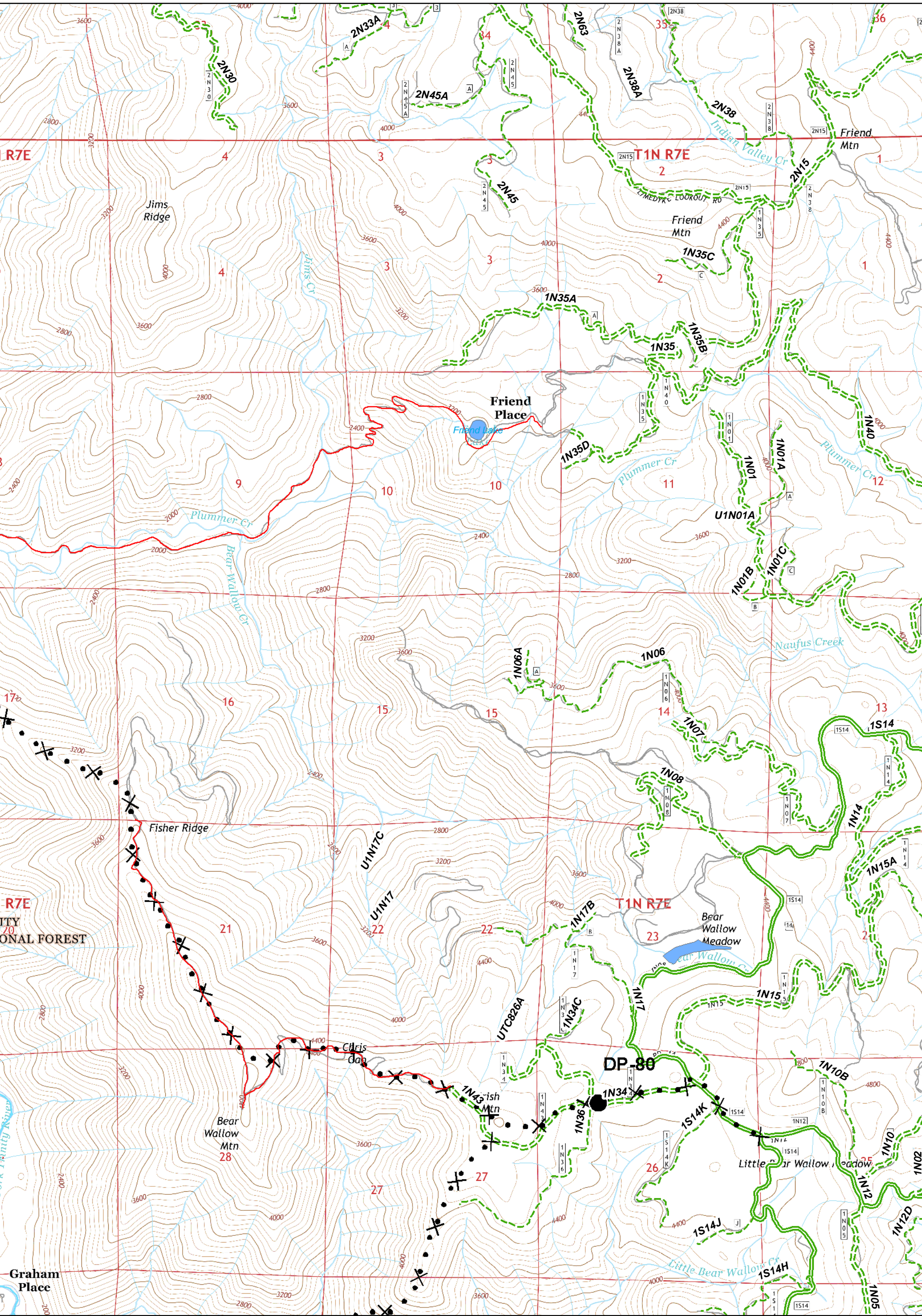
UTM Zone 10N
NAD83



() Division	● Drop Point	■ Structures	— Uncontrolled Fire Edge	✕ Proposed Dozer Line	— Six Rivers National Forest Administrative Boundary	— Major Roads	— Dirt	— Closed
■ ICP	⊕ Helibase	▲ Safety Zone	— Completed Dozer Line	⊕ Handline	— Forest Trail	— Local Streets	— Paved	— 4WD
● Helispot	⊕ Water Source	⊕ Repeater	— Completed Line					
⊕ Camp	⊕ Staging Area							

0 0.25 0.5 0.75 1 Miles

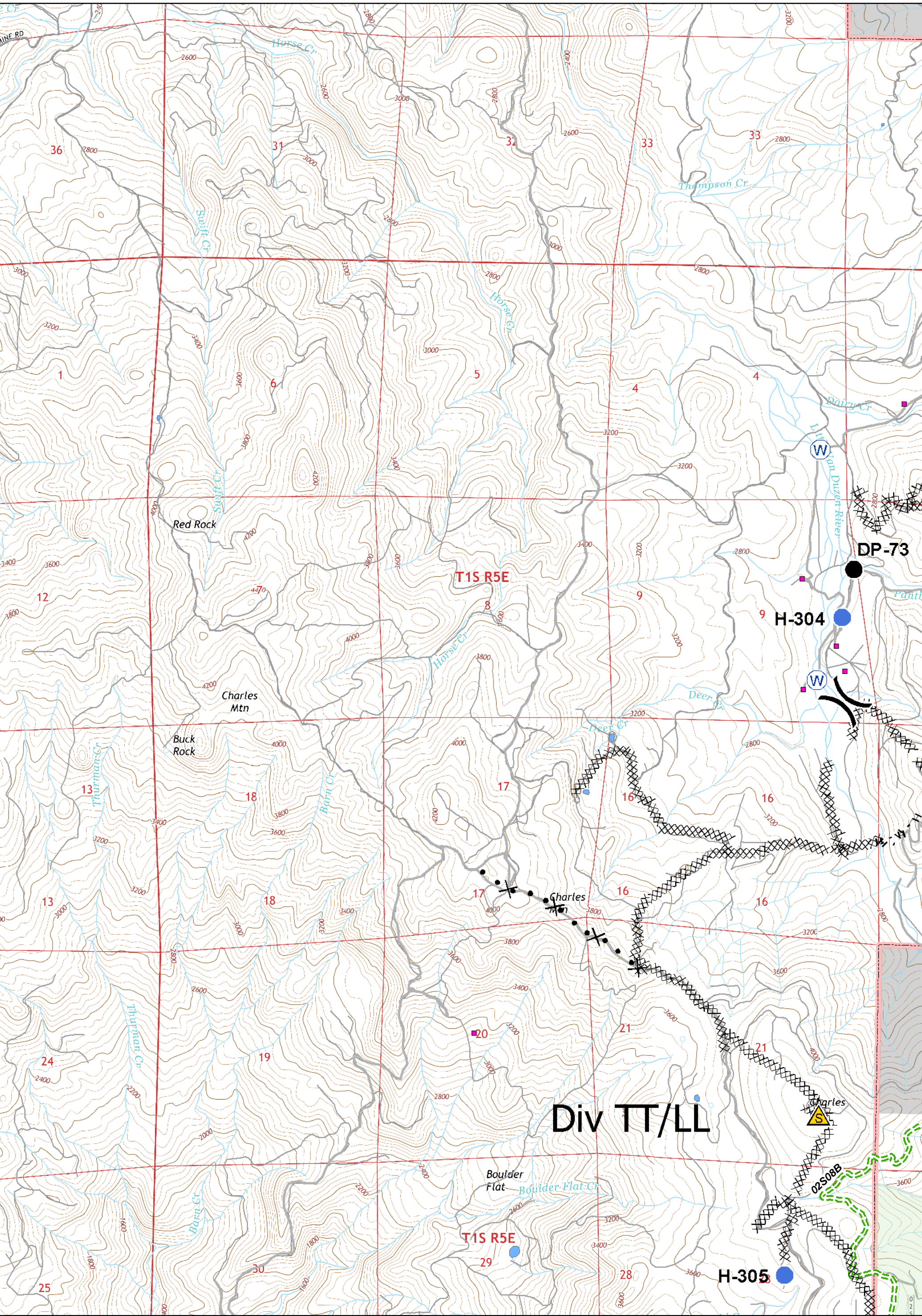
UTM Zone 10N
NAD83



() Division	● Drop Point	■ Structures	— Uncontrolled Fire Edge	✕ Proposed Dozer Line	▭ Six Rivers National Forest Administrative Boundary	— Major Roads	— Dirt	— Closed
■ ICP	⊙ Helibase	▲ Safety Zone	✕ Completed Dozer Line	⊙ Handline	— Forest Trail	— Local Streets	— Paved	— 4WD
● Helispot	⊙ Water Source	⊙ Repeater	— Completed Line					
⊙ Camp	⊙ Staging Area							

0 0.25 0.5 0.75 1 Miles

UTM Zone 10N
NAD83

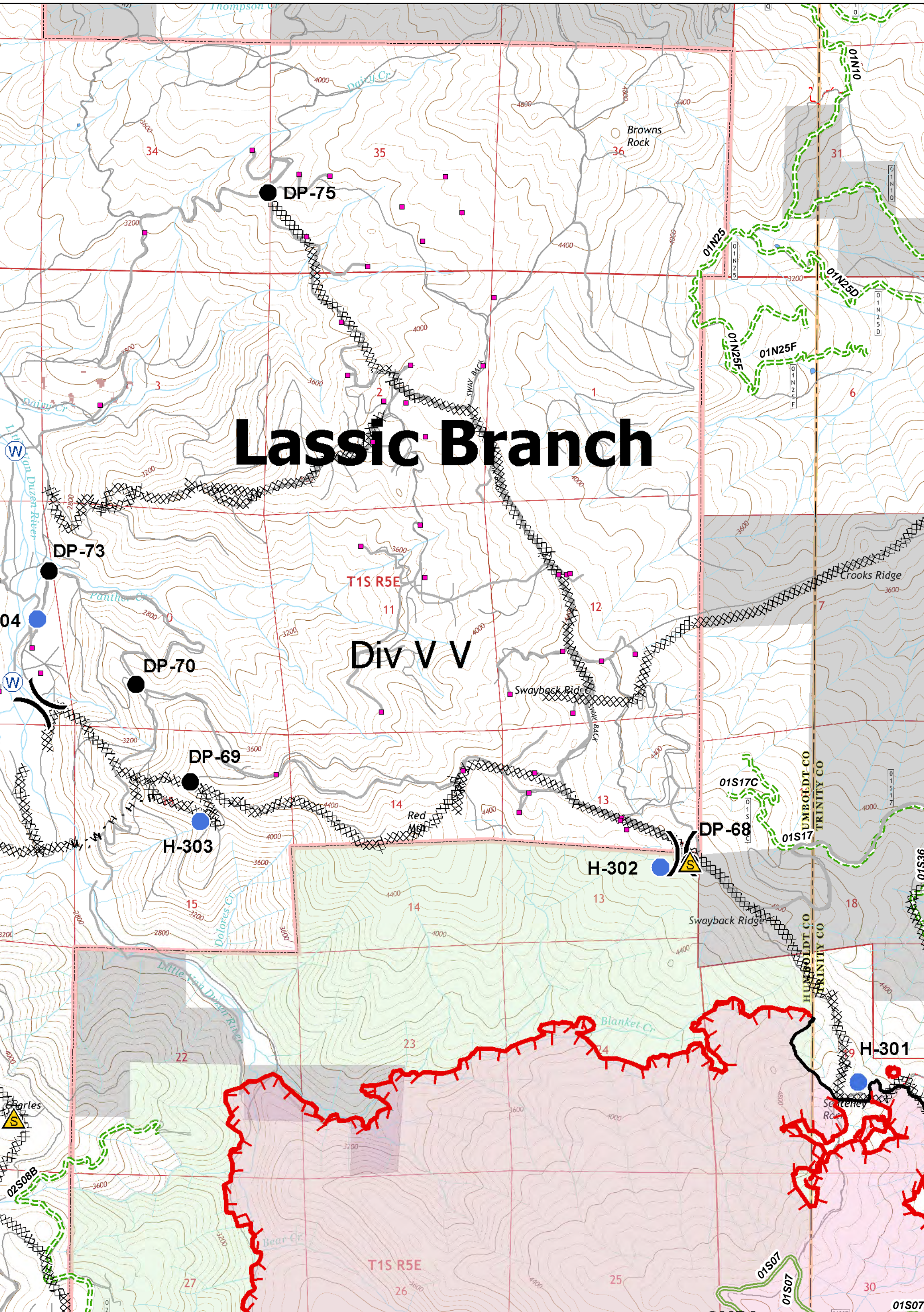


Division	Drop Point	Structures	Uncontrolled Fire Edge	Proposed Dozer Line	Six Rivers National Forest Administrative Boundary	Major Roads	Dirt	Closed
ICP	Helibase	Safety Zone	Completed Dozer Line	Handline	Forest Trail	Local Streets	Paved	4WD
Camp	Water Source	Repeater	Completed Line					
Staging Area								

0 0.25 0.5 0.75 1 Miles
 UTM Zone 10N NAD83

Lassic Branch

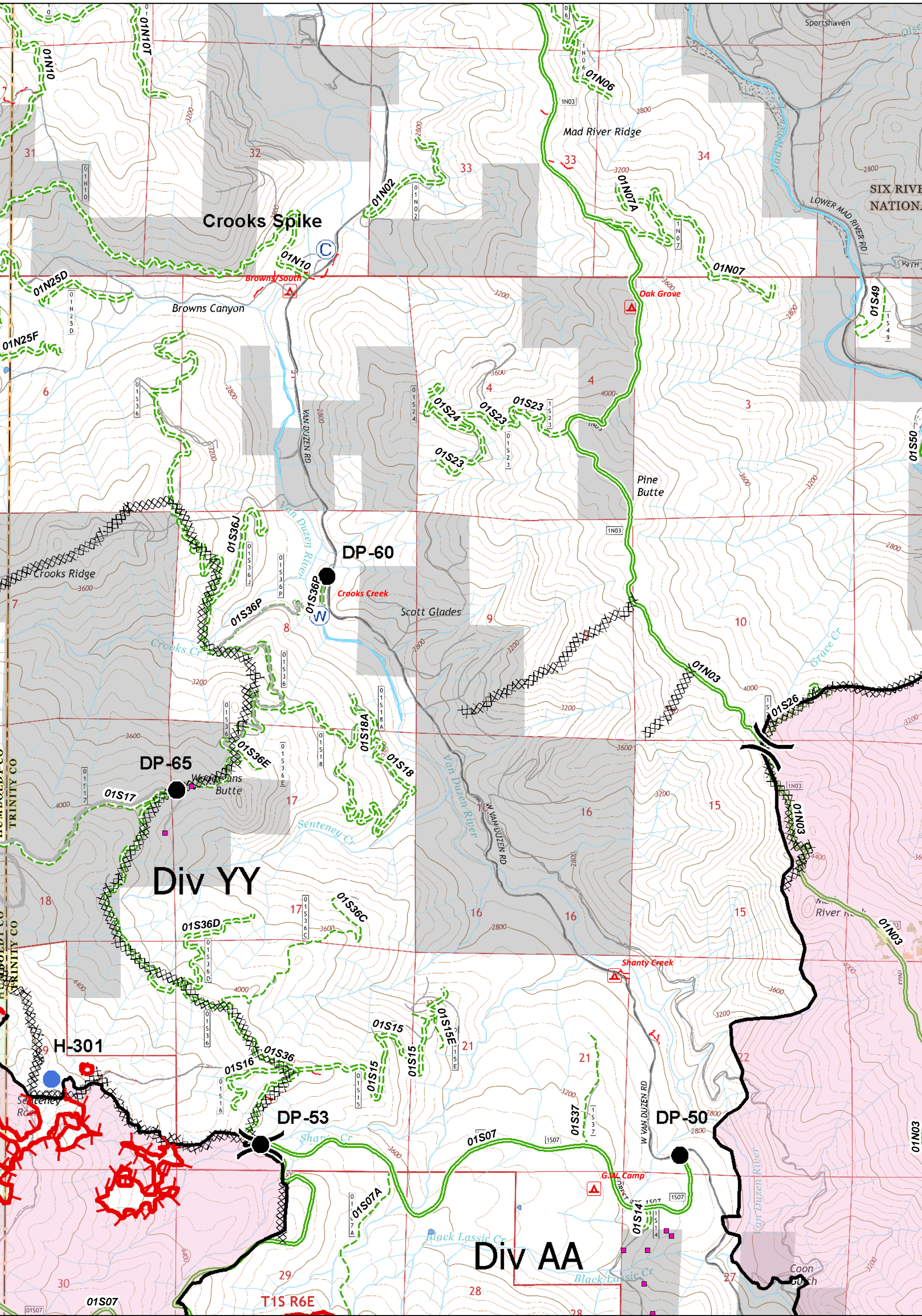
Div V V



() Division	● Drop Point	■ Structures	— Uncontrolled Fire Edge	✕ Proposed Dozer Line	— Six Rivers National Forest Administrative Boundary	— Major Roads	— Dirt	— Closed
■ ICP	Ⓜ Helibase	⚠ Safety Zone	ⓧ Completed Dozer Line	Ⓜ Handline	— Forest Trail	— Local Streets	— Paved	— 4WD
Ⓜ Camp	Ⓜ Repeater	Ⓜ Staging Area	— Completed Line					

0 0.25 0.5 0.75 1 Miles

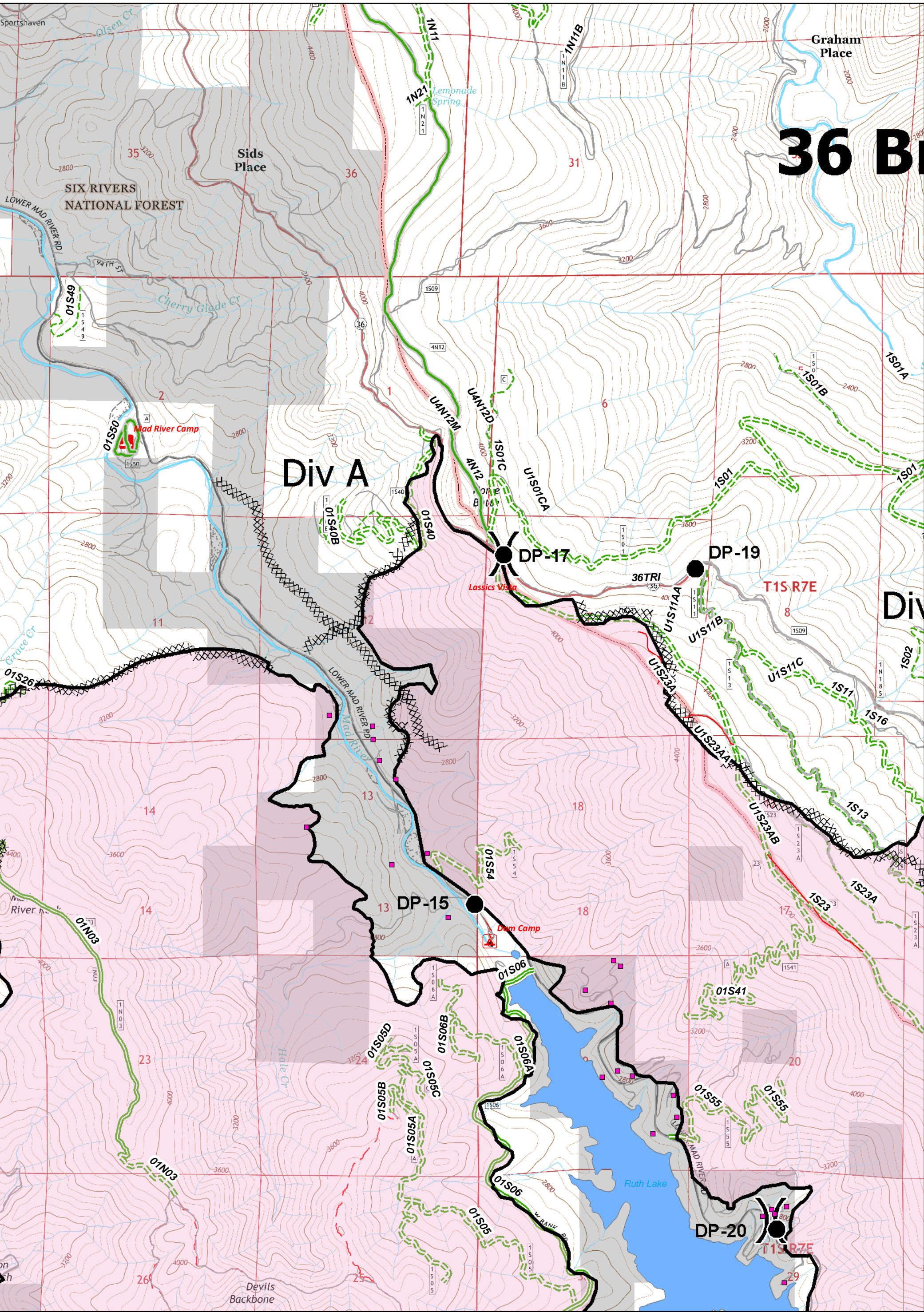
UTM Zone 10N
NAD83



() Division	● Drop Point	■ Structures	— Uncontrolled Fire Edge	✕ Proposed Dozer Line	— Six Rivers National Forest Administrative Boundary	— Major Roads	— Dirt	— Closed
■ ICP	⊕ Helibase	⚠ Safety Zone	✕ Completed Dozer Line	H Handline	— Forest Trail	— Local Streets	— Paved	— 4WD
● Helispot	⊕ Water Source	— Completed Line						
⊕ Camp	⊕ Repeater							
⊕ Staging Area								

0 0.25 0.5 0.75 1 Miles

UTM Zone 10N
NAD83



Division	Drop Point	Structures	Uncontrolled Fire Edge	Proposed Dozer Line	Six Rivers National Forest Administrative Boundary	Major Roads	Dirt	Closed
ICP	Helibase	Safety Zone	Completed Dozer Line	Handline	Forest Trail	Local Streets	Paved	4WD
Helispot	Water Source	Camp	Completed Line					
Repeater	Staging Area							

0 0.25 0.5 0.75 1 Miles
 UTM Zone 10N NAD83

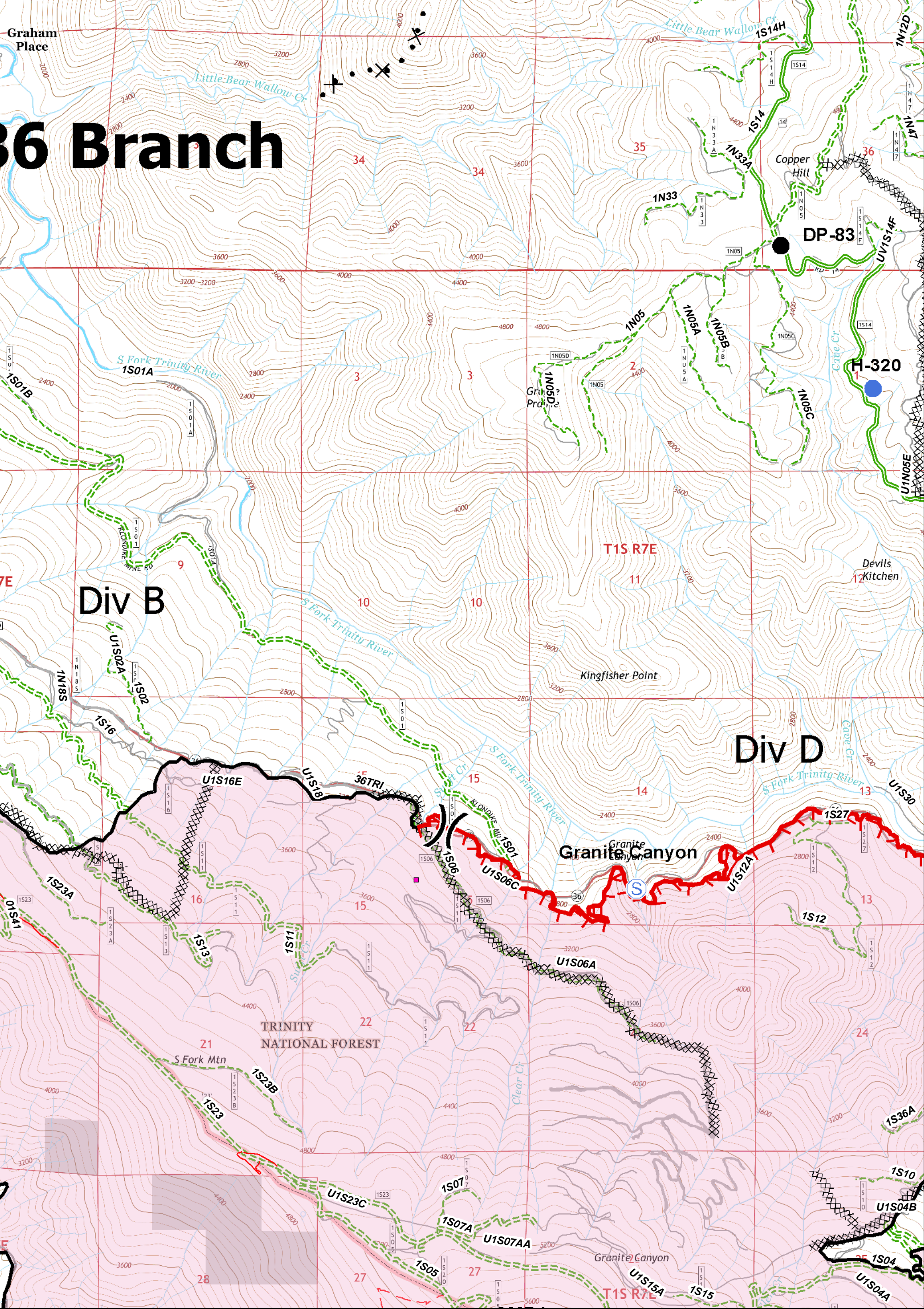
36 Branch

Div B

Div D

Granite Canyon

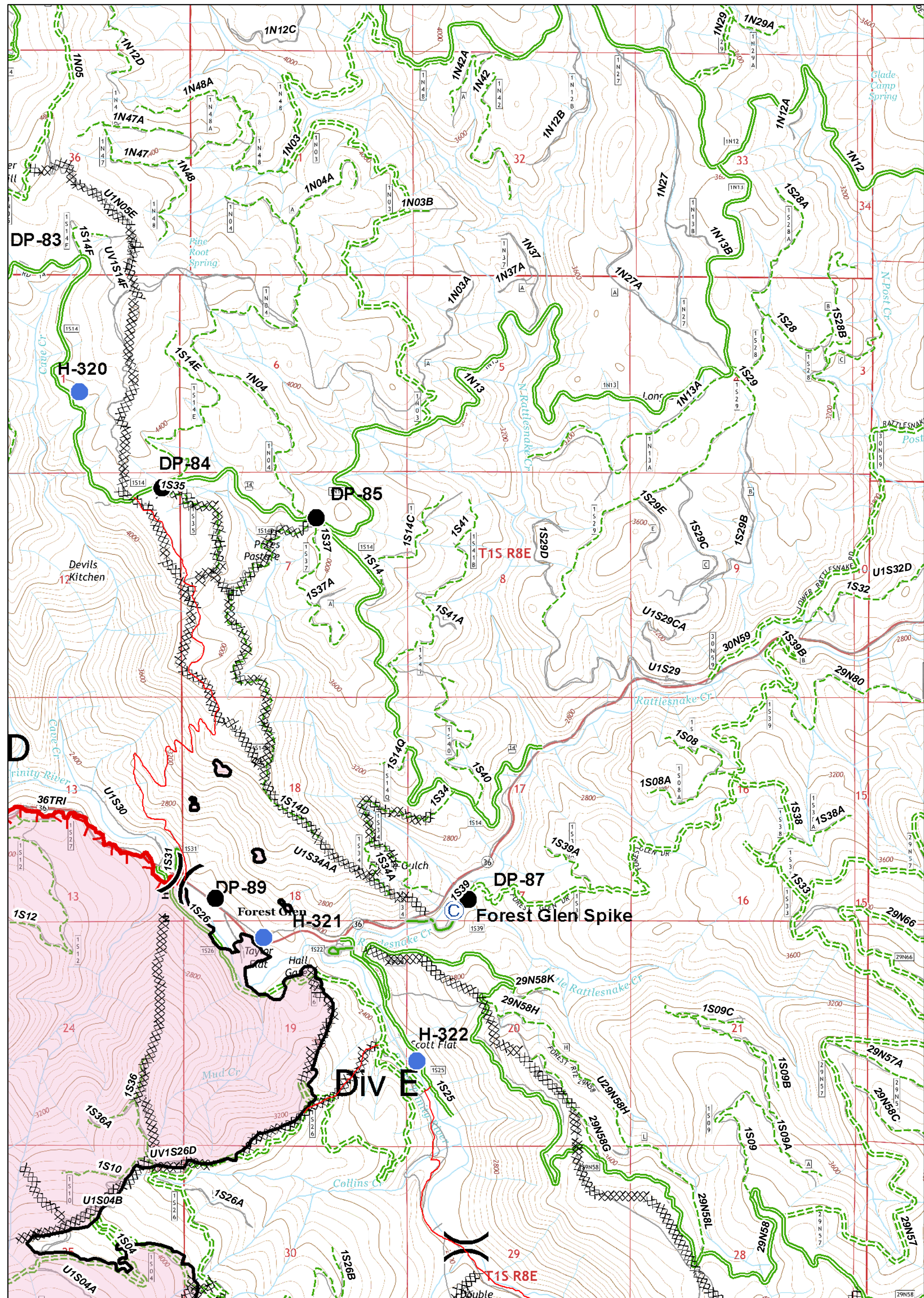
TRINITY NATIONAL FOREST



Division	Drop Point	Structures	Uncontrolled Fire Edge	Proposed Dozer Line	Six Rivers National Forest Administrative Boundary	Major Roads	Dirt	Closed
ICP	Helibase	Safety Zone	Completed Dozer Line	Handline	Forest Trail	Local Streets	Paved	4WD
Helispot	Water Source	Completed Line						
Camp	Repeater							
Staging Area								

0 0.25 0.5 0.75 1 Miles

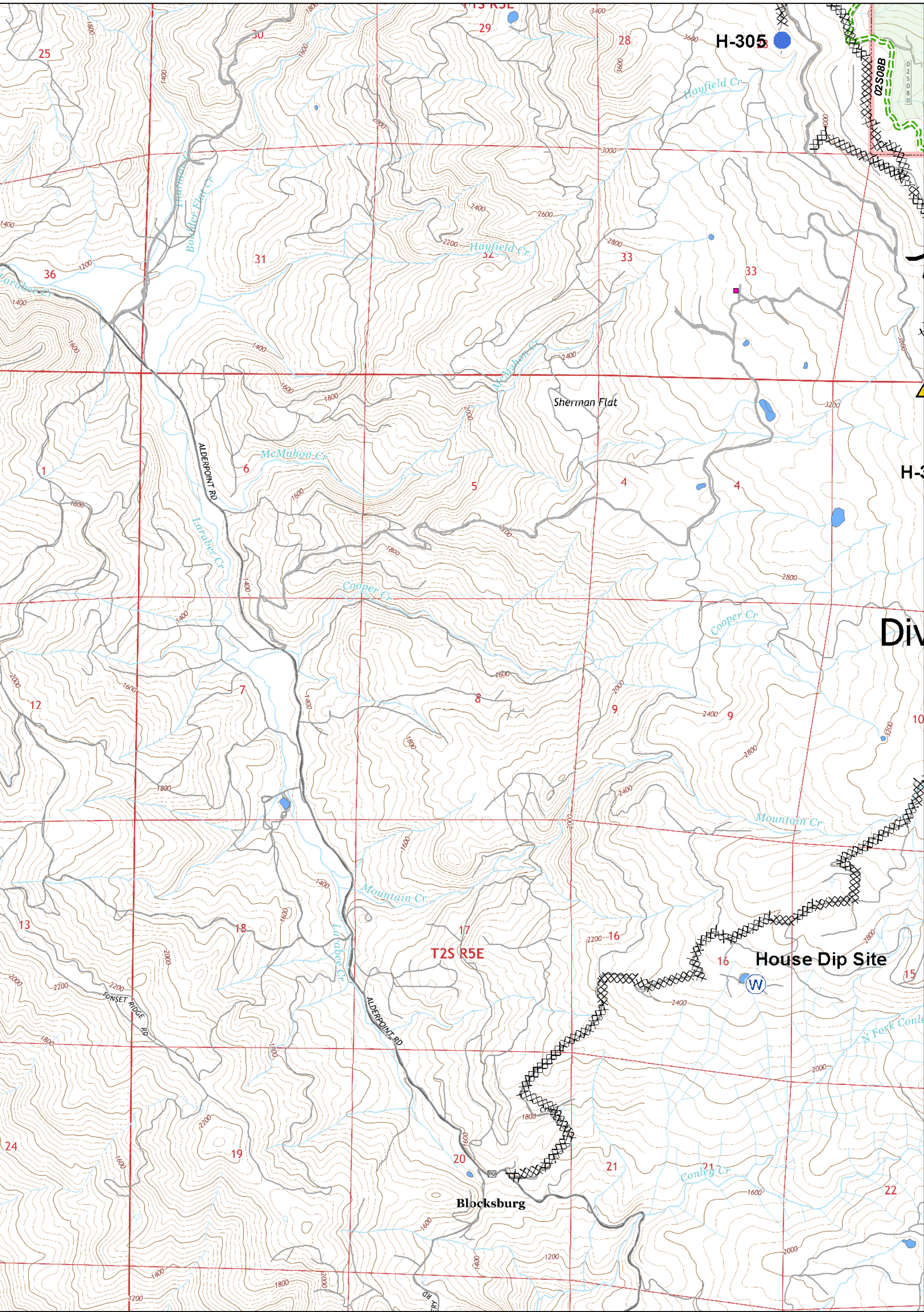
UTM Zone 10N
NAD83



() Division	● Drop Point	■ Structures	— Uncontrolled Fire Edge	✕ Proposed Dozer Line
■ ICP	⊕ Helibase	▲ Safety Zone	⊘ Completed Dozer Line	— Handline
● Helispot	⊕ Water Source	⊘ Repeater	— Completed Line	— Six Rivers National Forest Administrative Boundary
⊕ Staging Area	⊕ Repeater	— Forest Trail	— Major Roads	— Dirt
			— Local Streets	— Paved
				— 4WD

0 0.25 0.5 0.75 1 Miles

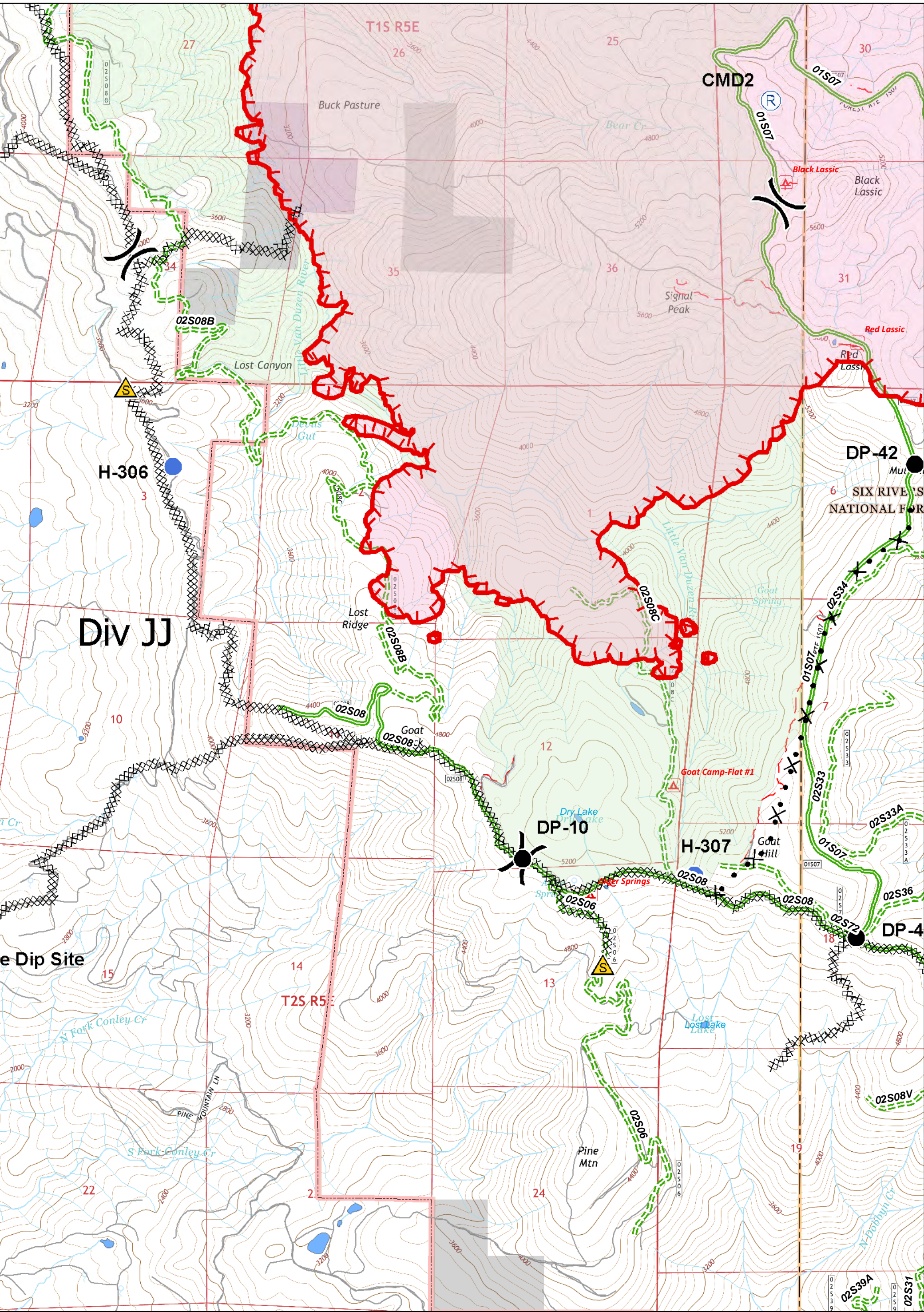
UTM Zone 10N
NAD83



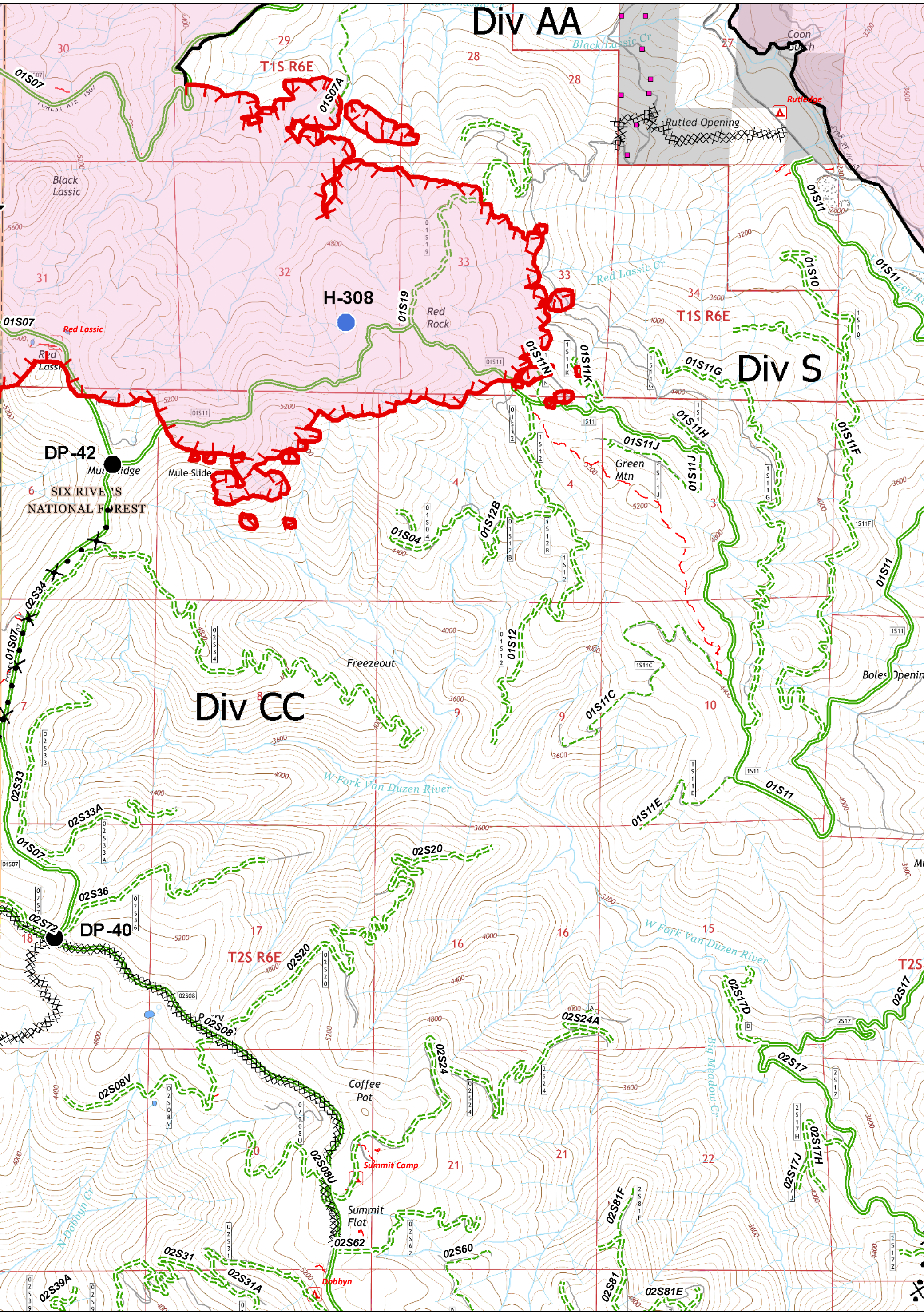
Division	Drop Point	Structures	Uncontrolled Fire Edge	Proposed Dozer Line	Six Rivers National Forest Administrative Boundary	Major Roads	Dirt	Closed
ICP	Helibase	Safety Zone	Completed Dozer Line	Handline	Forest Trail	Local Streets	Paved	4WD
Helispot	Water Source	Repeater	Completed Line					
Camp	Staging Area							

0 0.25 0.5 0.75 1 Miles

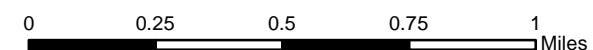

UTM Zone 10N
NAD83



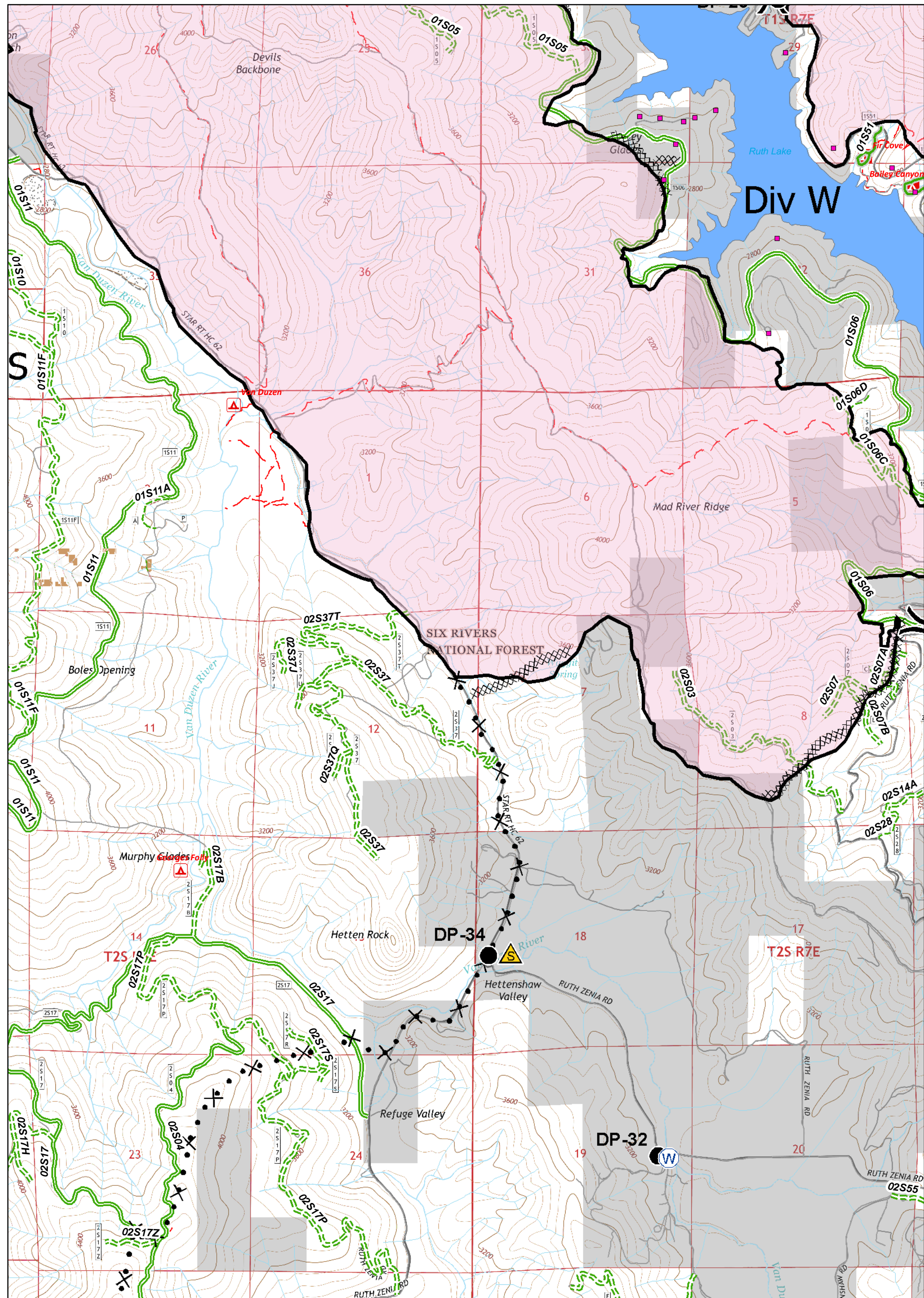
<ul style="list-style-type: none">)) Division ICP Helibase Helispot Camp Staging Area 	<ul style="list-style-type: none"> ● Drop Point ⚠ Safety Zone W Water Source R Repeater 	<ul style="list-style-type: none"> ■ Structures XX Completed Dozer Line — Completed Line 	<ul style="list-style-type: none"> — Uncontrolled Fire Edge — Six Rivers National Forest Administrative Boundary — Forest Trail 	<ul style="list-style-type: none"> ✕ Proposed Dozer Line H Handline 	<ul style="list-style-type: none"> — Major Roads — Local Streets 	<ul style="list-style-type: none"> — Dirt — Paved — 4WD 	<p>0 0.25 0.5 0.75 1 Miles</p>	<p>UTM Zone 10N NAD83</p>
--	---	---	--	---	--	--	--------------------------------	-------------------------------



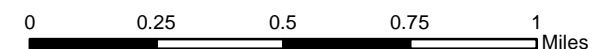


() Division	● Drop Point	■ Structures	— Uncontrolled Fire Edge	✕ Proposed Dozer Line	— Six Rivers National Forest Administrative Boundary	— Major Roads	— Dirt	— Closed
■ ICP	⊙ Helibase	⚠ Safety Zone	— Completed Dozer Line	— Handline	— Forest Trail	— Local Streets	— Paved	— 4WD
● Helispot	⊙ Camp	⊙ Repeater	— Completed Line					
⊙ Staging Area								

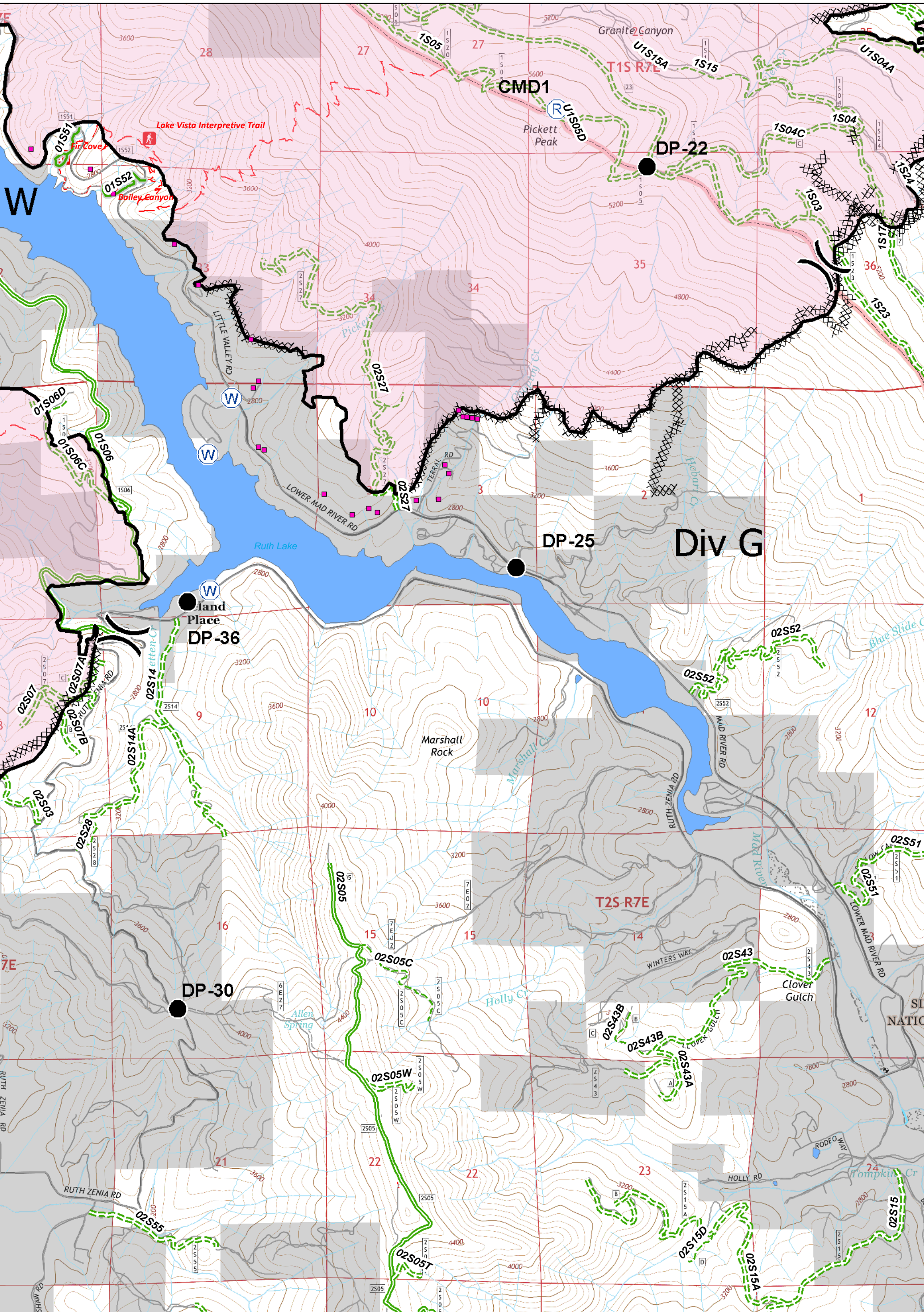



 UTM Zone 10N
NAD83



() Division	● Drop Point	■ Structures	— Uncontrolled Fire Edge	✕ Proposed Dozer Line	— Six Rivers National Forest Administrative Boundary	— Major Roads	— Dirt	— Closed
■ ICP	⊕ Helibase	⚠ Safety Zone	✕ Completed Dozer Line	⊙ Handline	— Forest Trail	— Local Streets	— Paved	— 4WD
⊙ Camp	⊕ Water Source	⊕ Repeater	— Completed Line					
⊕ Staging Area								

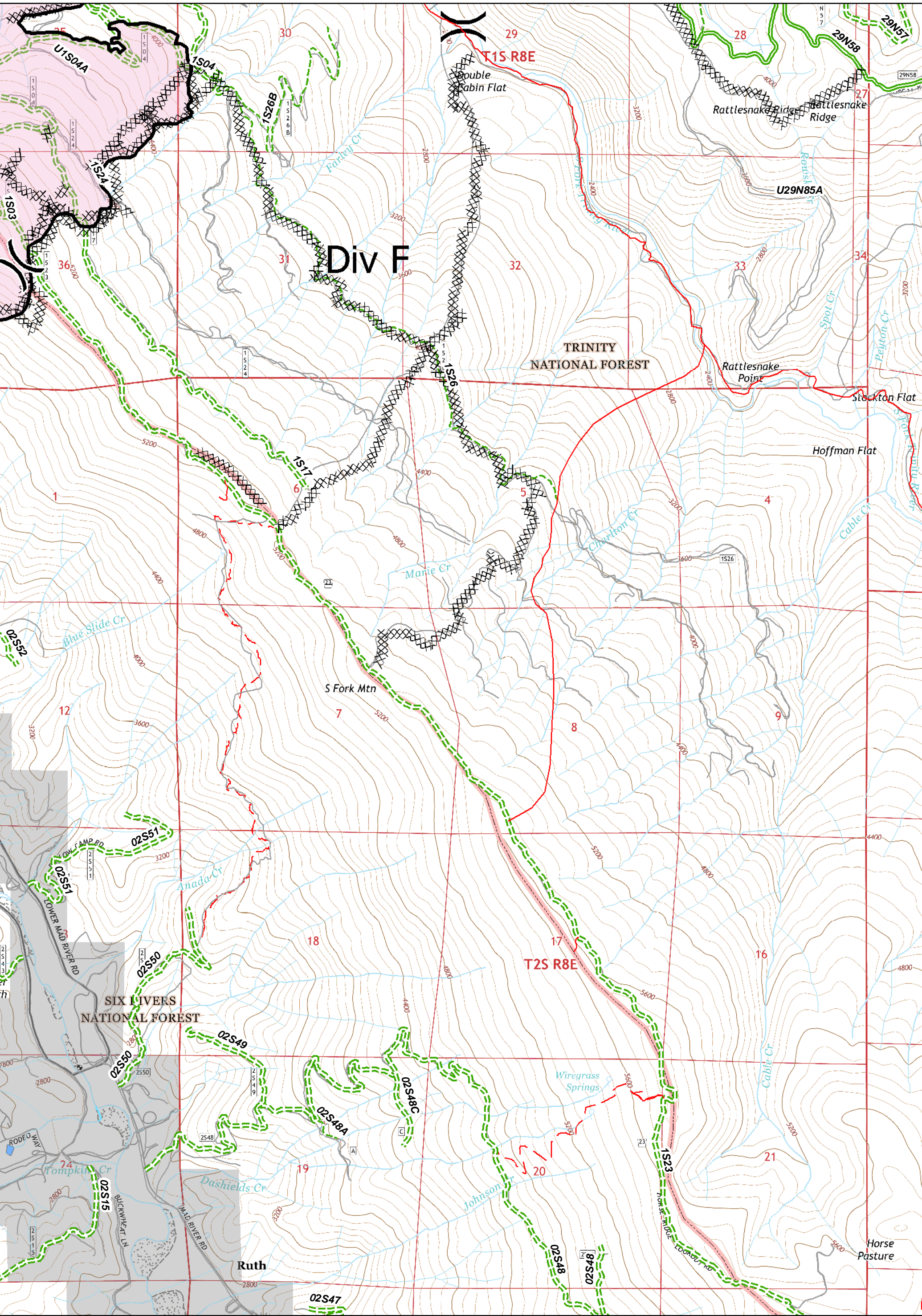



 UTM Zone 10N
NAD83



() Division	● Drop Point	■ Structures	— Uncontrolled Fire Edge	✕ Proposed Dozer Line	— Six Rivers National Forest Administrative Boundary	— Major Roads	— Dirt	— Closed
■ ICP	⊙ Helibase	▲ Safety Zone	✕ Completed Dozer Line	— Handline	— Forest Trail	— Local Streets	— Paved	— 4WD
● Helispot	⊙ Water Source	⊙ Camp	— Completed Line					
⊙ Staging Area	⊙ Repeater							

0 0.25 0.5 0.75 1 Miles

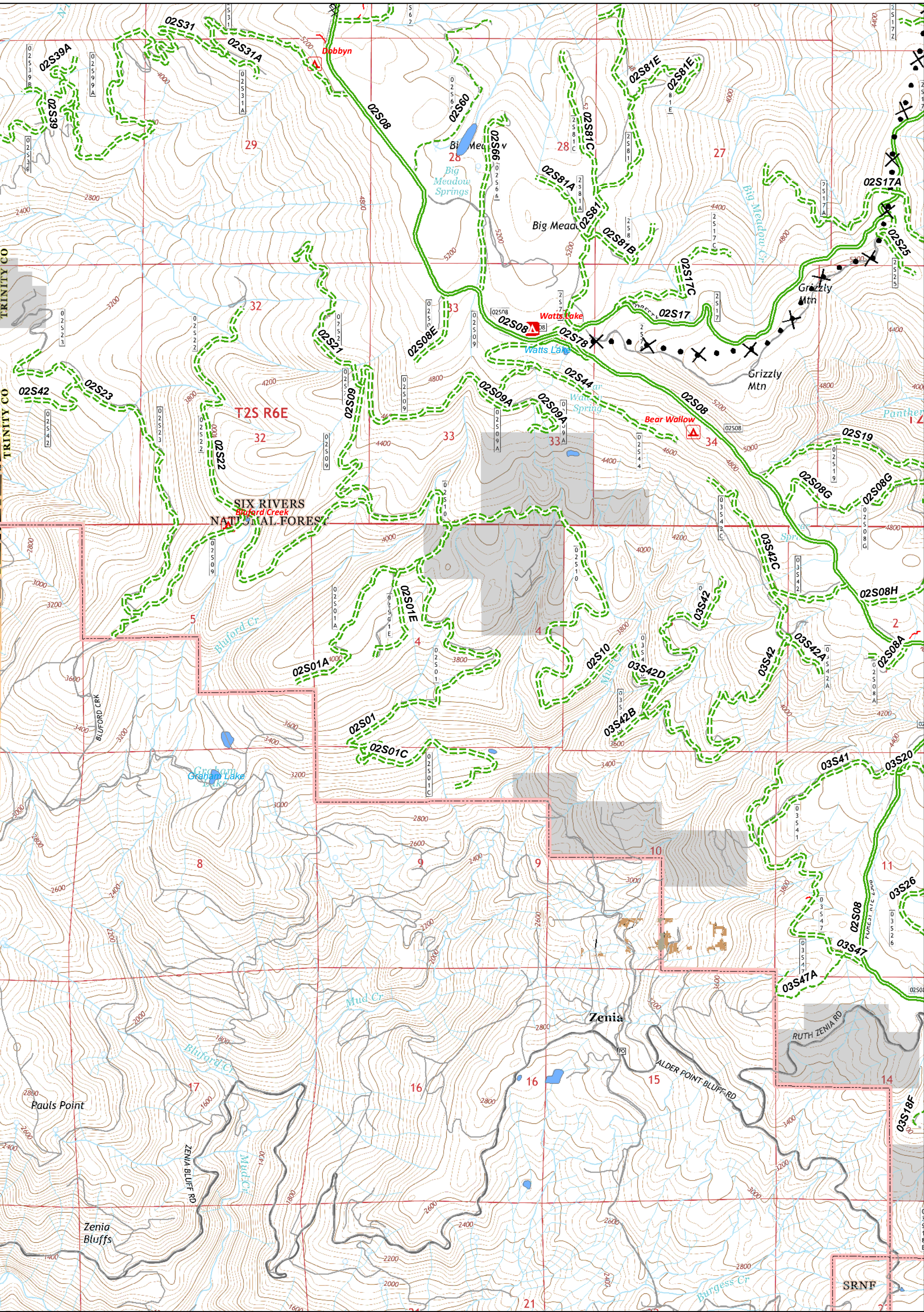
UTM Zone 10N
NAD83



)) Division	● Drop Point	■ Structures	— Uncontrolled Fire Edge	✕ Proposed Dozer Line	▭ Six Rivers National Forest Administrative Boundary	— Major Roads	— Dirt	— Closed
□ ICP	⊕ Helibase	▲ Safety Zone	⊗ Completed Dozer Line	⊙ Handline	— Forest Trail	— Local Streets	— Paved	— 4WD
⊙ Camp	⊕ Water Source	⊙ Repeater	— Completed Line					
⊙ Staging Area								

0 0.25 0.5 0.75 1 Miles

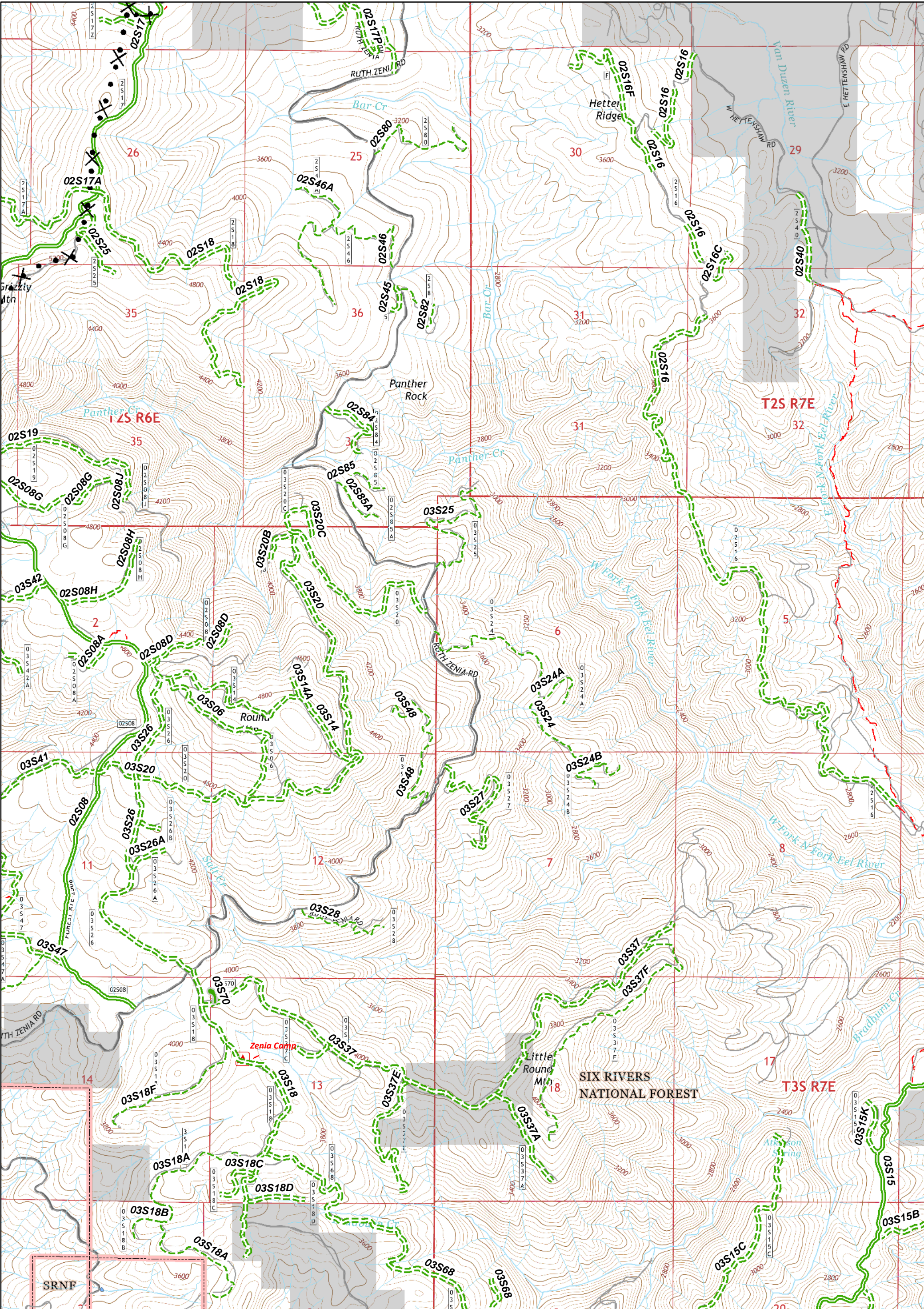
UTM Zone 10N
NAD83



() Division	● Drop Point	■ Structures	— Uncontrolled Fire Edge	✕ Proposed Dozer Line
■ ICP	⊙ Helibase	▲ Safety Zone	⊗ Completed Dozer Line	⊙ Handline
● Helispot	⊙ Water Source	⊙ Camp	⊙ Repeater	⊙ Staging Area
⊙ Repeater	⊙ Staging Area	⊙ Staging Area	⊙ Staging Area	⊙ Staging Area

 Six Rivers National Forest Administrative Boundary
 Forest Trail
 Major Roads
 Local Streets
 Dirt
 Paved
 Closed
 4WD

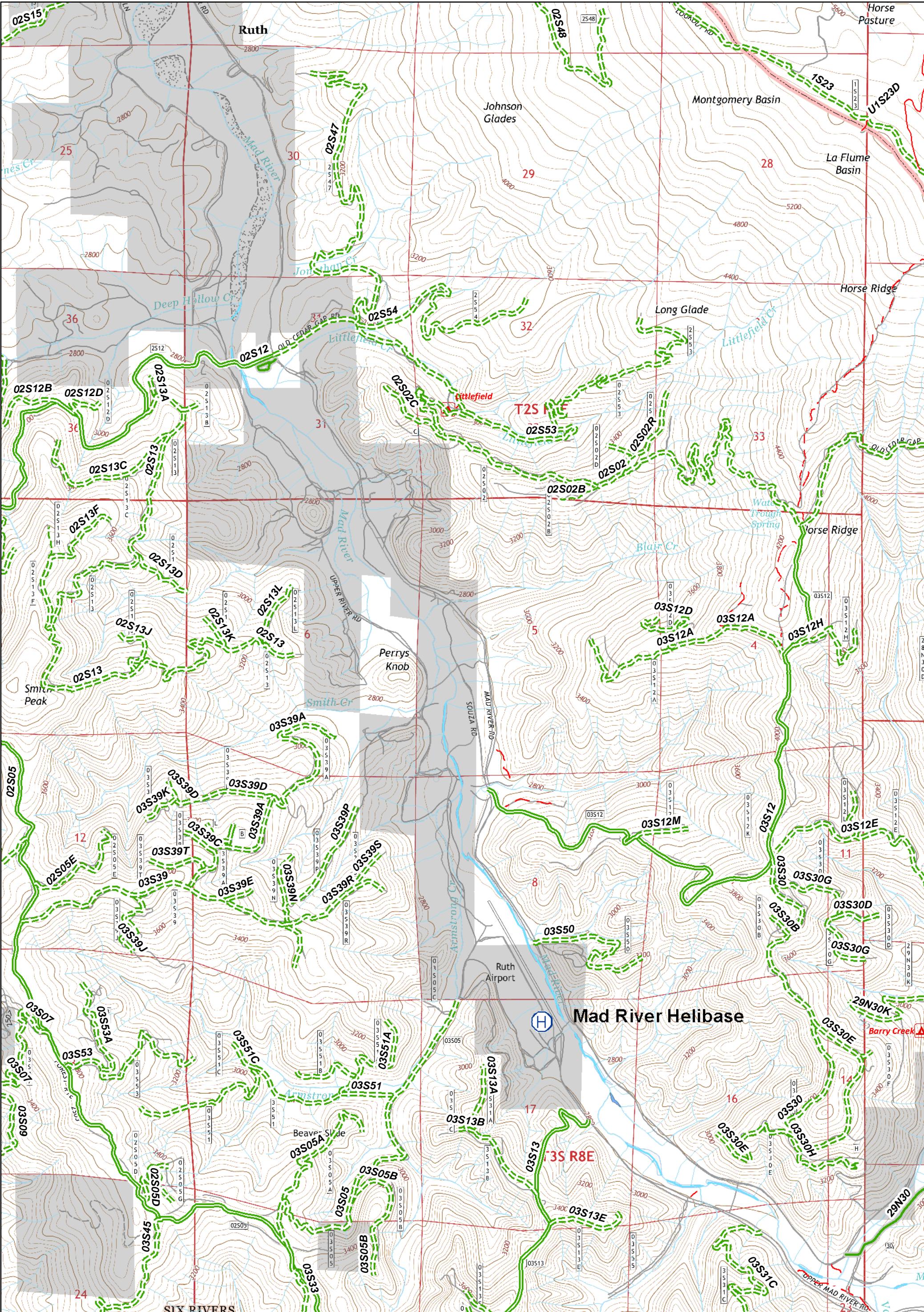
0 0.25 0.5 0.75 1 Miles
 UTM Zone 10N NAD83



() Division	● Drop Point	■ Structures	— Uncontrolled Fire Edge	✕ Proposed Dozer Line	▭ Six Rivers National Forest Administrative Boundary	— Major Roads	— Dirt	— Closed
■ ICP	⊕ Helibase	▲ Safety Zone	⊗ Completed Dozer Line	⊙ Handline	— Forest Trail	— Local Streets	— Paved	— 4WD
● Helispot	⊕ Water Source	⊙ Camp	— Completed Line					
⊙ Repeater								
⊙ Staging Area								

0 0.25 0.5 0.75 1 Miles

UTM Zone 10N
NAD83



- () Division
- Drop Point
- Structures
- ✂ Uncontrolled Fire Edge
- ✂ Proposed Dozer Line
- ICP
- Ⓜ Helibase
- ▲ Safety Zone
- ✂ Completed Dozer Line
- Ⓜ Handline
- Ⓜ Helispot
- Ⓜ Water Source
- Ⓜ Camp
- Ⓜ Repeater
- Ⓜ Staging Area
- Ⓜ Completed Line

Legend and Scale:

- Six Rivers National Forest Administrative Boundary
- Forest Trail
- Major Roads
- Local Streets
- Dirt
- Paved
- Closed
- 4WD

Scale: 0 0.25 0.5 0.75 1 Miles

UTM Zone 10N NAD83