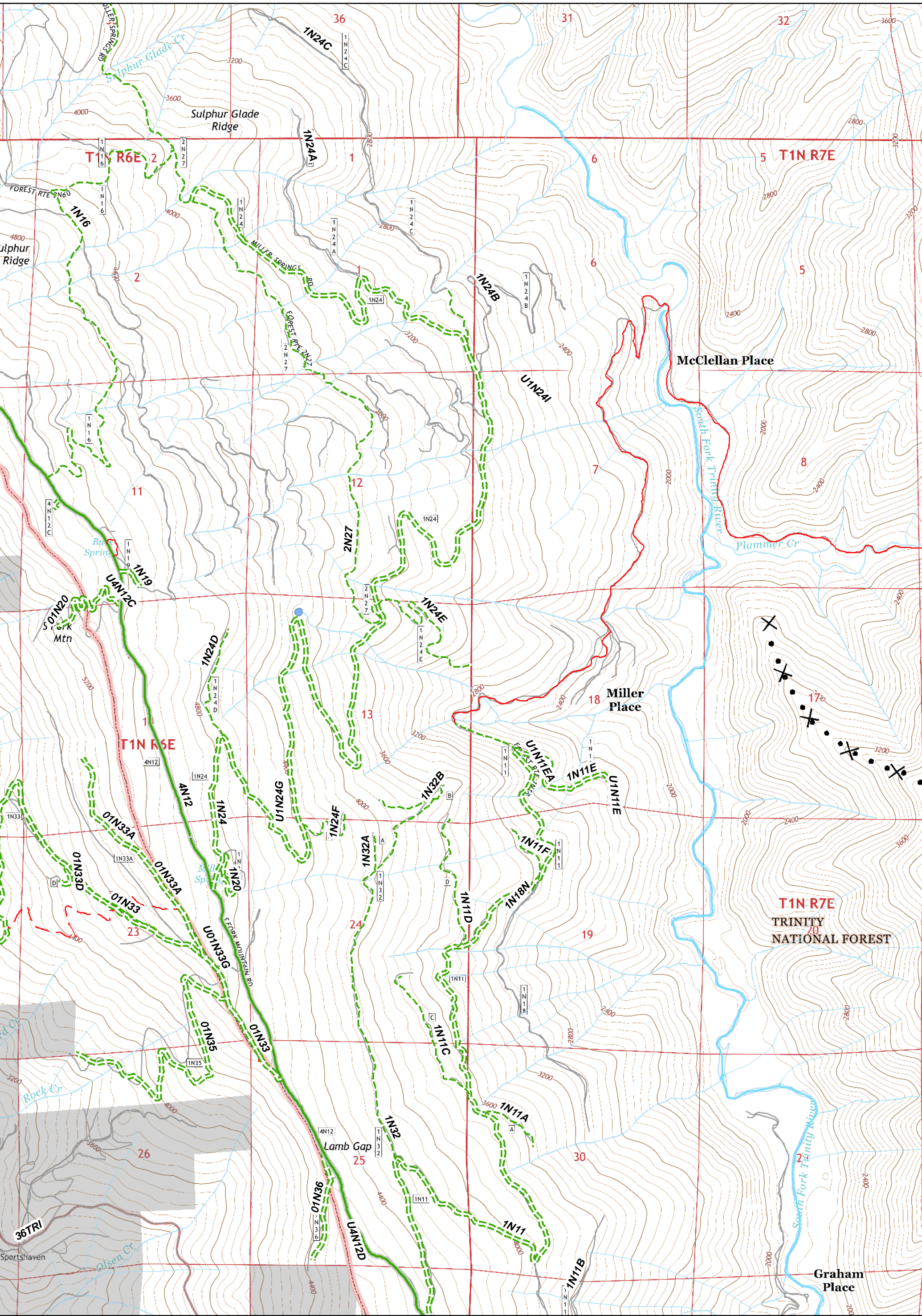



0 0.25 0.5 0.75 1 Miles

UTM Zone 10N  
NAD83



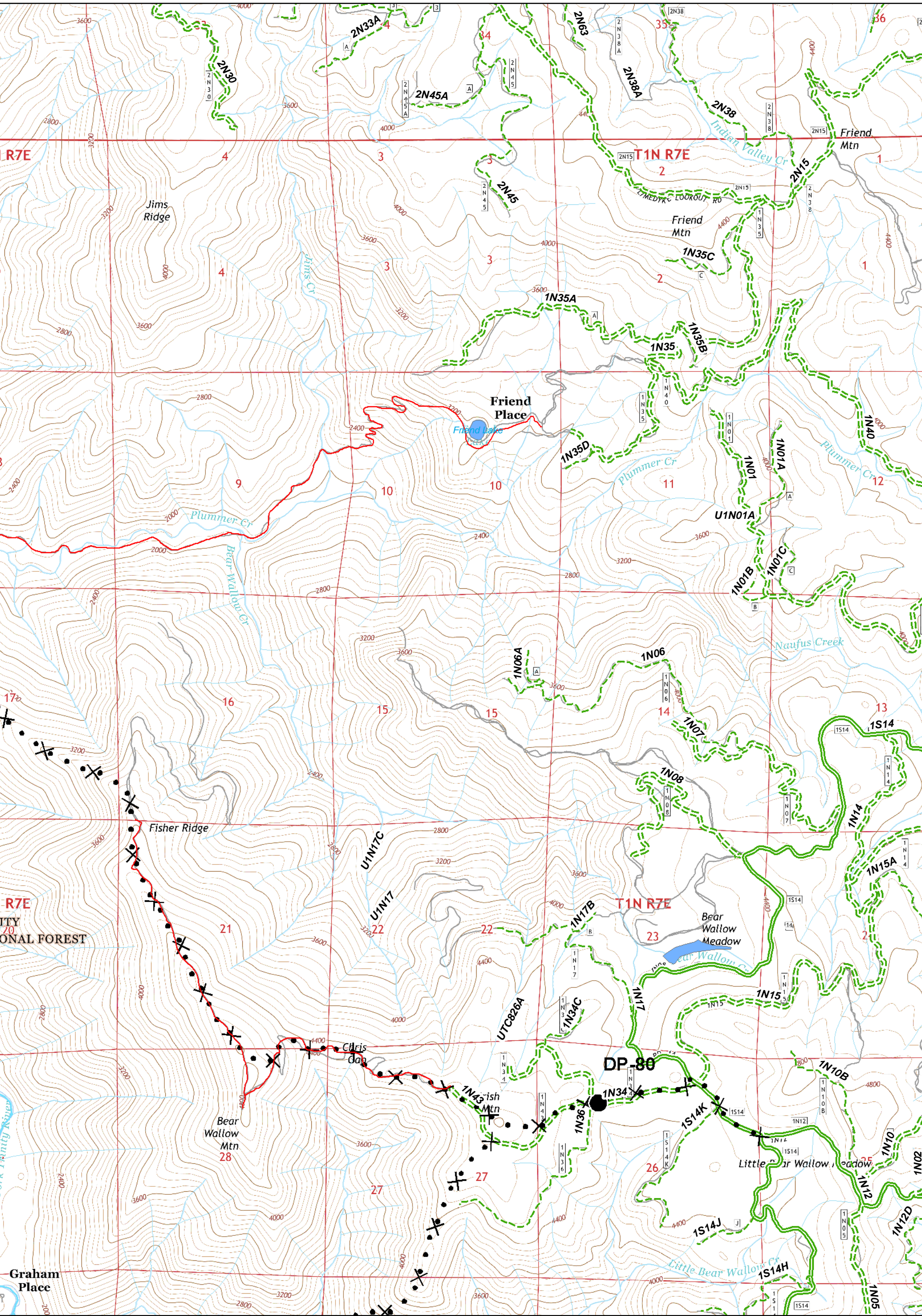


Division	Drop Point	Structures	Uncontrolled Fire Edge	Proposed Dozer Line	Six Rivers National Forest Administrative Boundary	Major Roads	Dirt	Closed
Branch	Helibase	Safety Zone	Completed Dozer Line	Handline	Forest Trail	Local Streets	Paved	4WD
ICP	Helispot	Repeater	Completed Line					
Retardant Gel Plant	Staging Area	Water Source						
	Restricted Water Source							

0 0.25 0.5 0.75 1 Miles

UTM Zone 10N  
NAD83



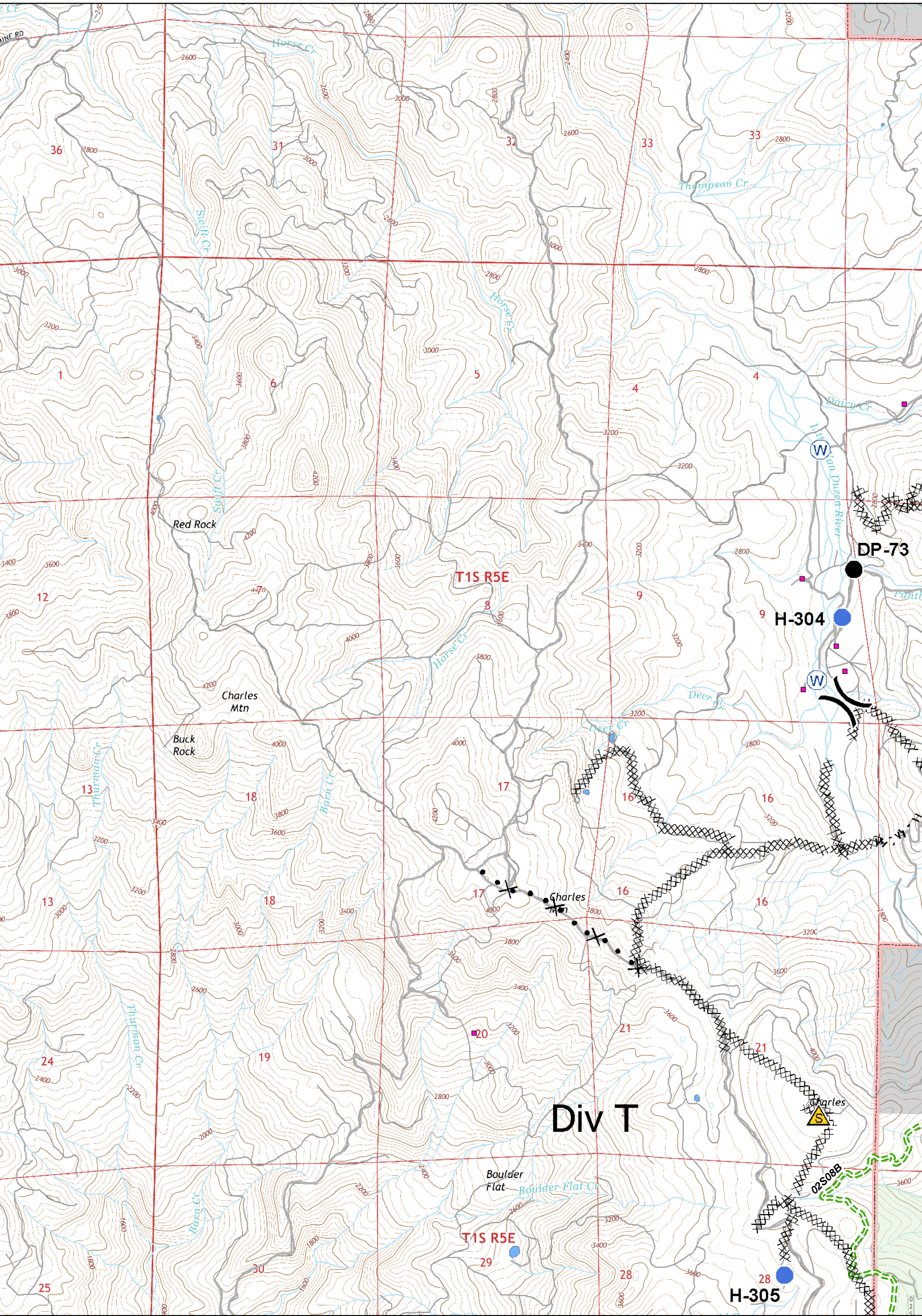


Division	Drop Point	Structures	Uncontrolled Fire Edge	Proposed Dozer Line	Six Rivers National Forest Administrative Boundary	Major Roads	Dirt	Closed
Branch	Helibase	Safety Zone	Completed Dozer Line	Handline	Forest Trail	Local Streets	Paved	4WD
ICP	Helispot	Repeater	Completed Line					
Retardant Gel Plant	Staging Area	Water Source						
	Restricted Water Source							

0 0.25 0.5 0.75 1 Miles

UTM Zone 10N  
NAD83



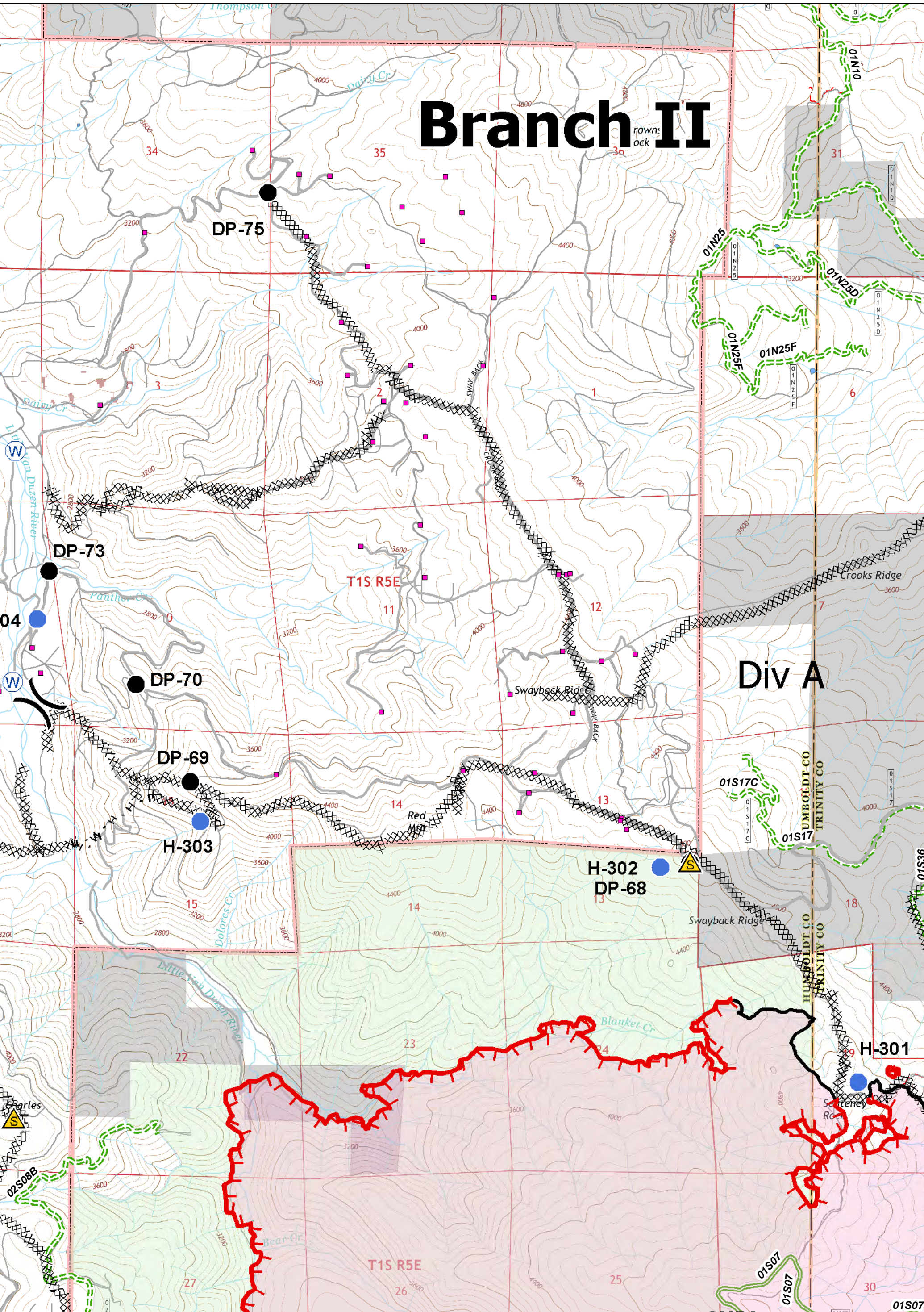


Division	Drop Point	Structures	Uncontrolled Fire Edge	Proposed Dozer Line	Six Rivers National Forest Administrative Boundary	Major Roads	Dirt	Closed
Branch	Helibase	Safety Zone	Completed Dozer Line	Handline	Forest Trail	Local Streets	Paved	4WD
ICP	Helispot	Repeater	Completed Line					
Staging Area	Water Source	Restricted Water Source						
Retardant Gel Plant								

UTM Zone 10N  
 NAD83



# Branch II

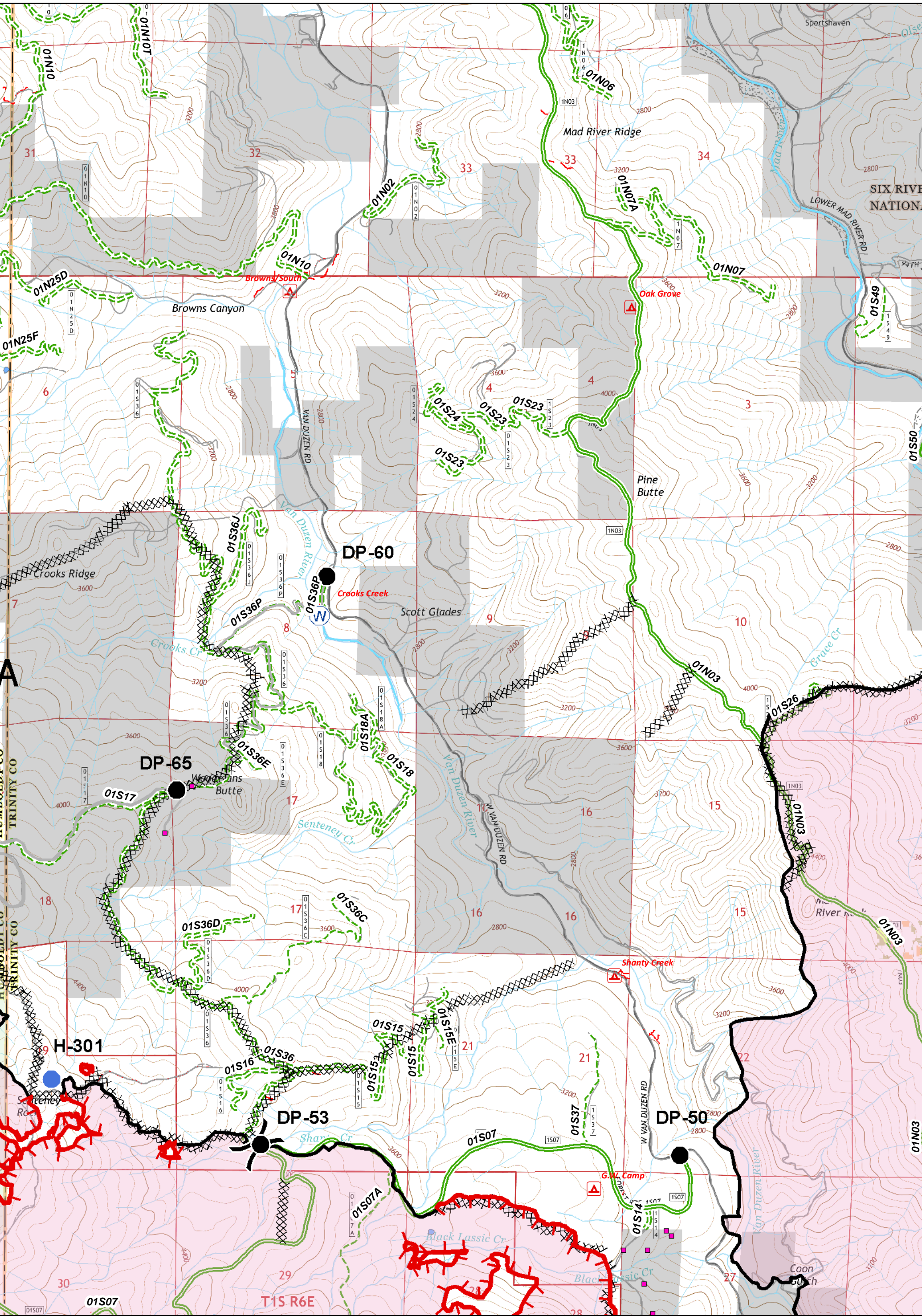


( ) Division	● Drop Point	■ Structures	— Uncontrolled Fire Edge	✕ Proposed Dozer Line	— Six Rivers National Forest Administrative Boundary	— Major Roads	— Dirt	— Closed
Branch	⊕ Helibase	▲ Safety Zone	✕ Completed Dozer Line	H Handline	— Forest Trail	— Local Streets	— Paved	— 4WD
■ ICP	● Helispot	⊙ Repeater	— Completed Line					
⊙ Staging Area	⊙ Water Source	⊙ Restricted Water Source						

0 0.25 0.5 0.75 1 Miles

UTM Zone 10N  
NAD83



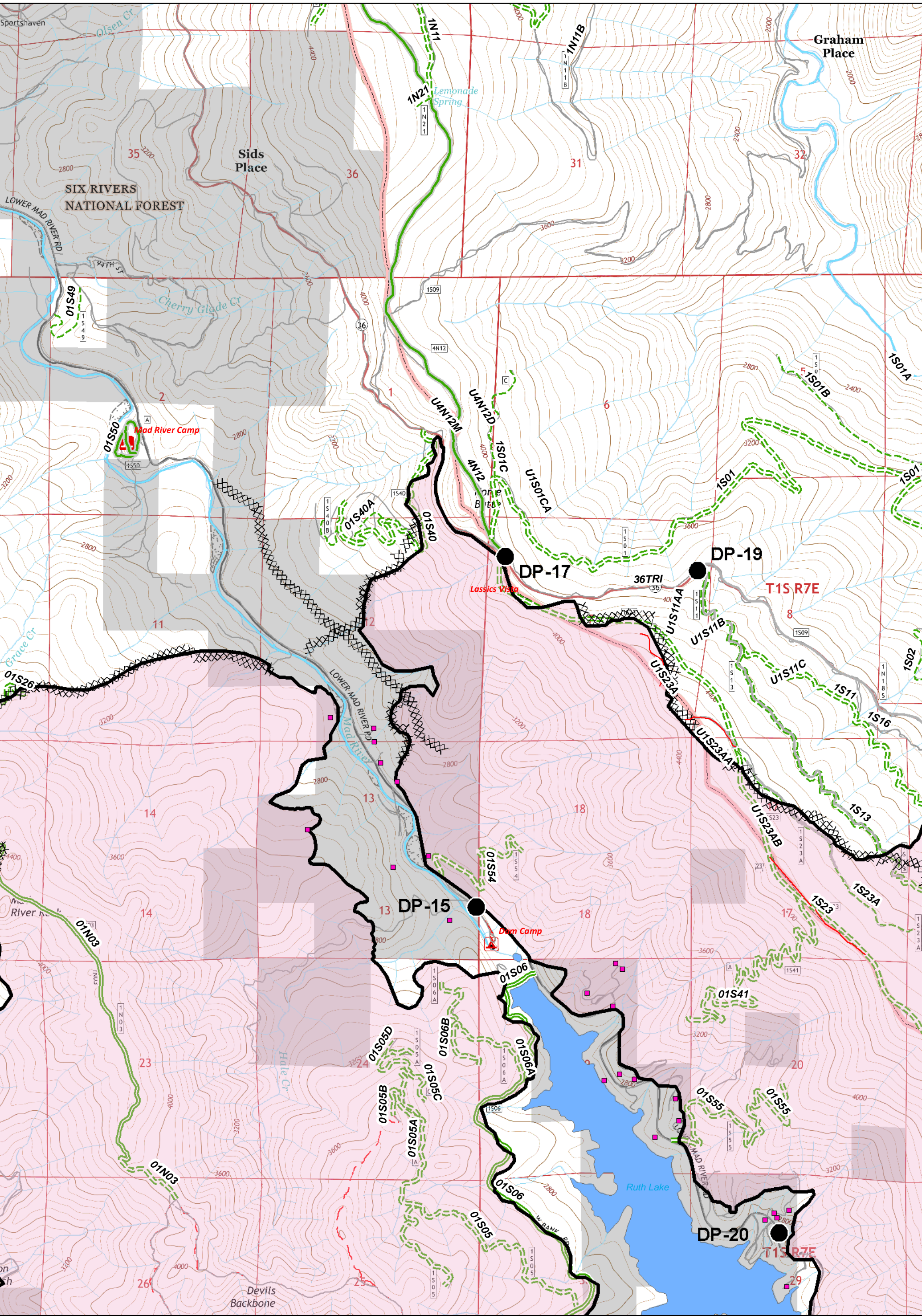


( ) Division	● Drop Point	■ Structures	— Uncontrolled Fire Edge	✕ Proposed Dozer Line	▭ Six Rivers National Forest Administrative Boundary	— Major Roads	— Dirt	— Closed
Branch	⊕ Helibase	⚠ Safety Zone	✕ Completed Dozer Line	H Handline	— Forest Trail	— Local Streets	— Paved	— 4WD
⊕ ICP	⊕ Helispot	⊕ Repeater	— Completed Line					
⊕ Staging Area	⊕ Water Source	⊕ Retardant Gel Plant						

0 0.25 0.5 0.75 1 Miles

UTM Zone 10N  
NAD83



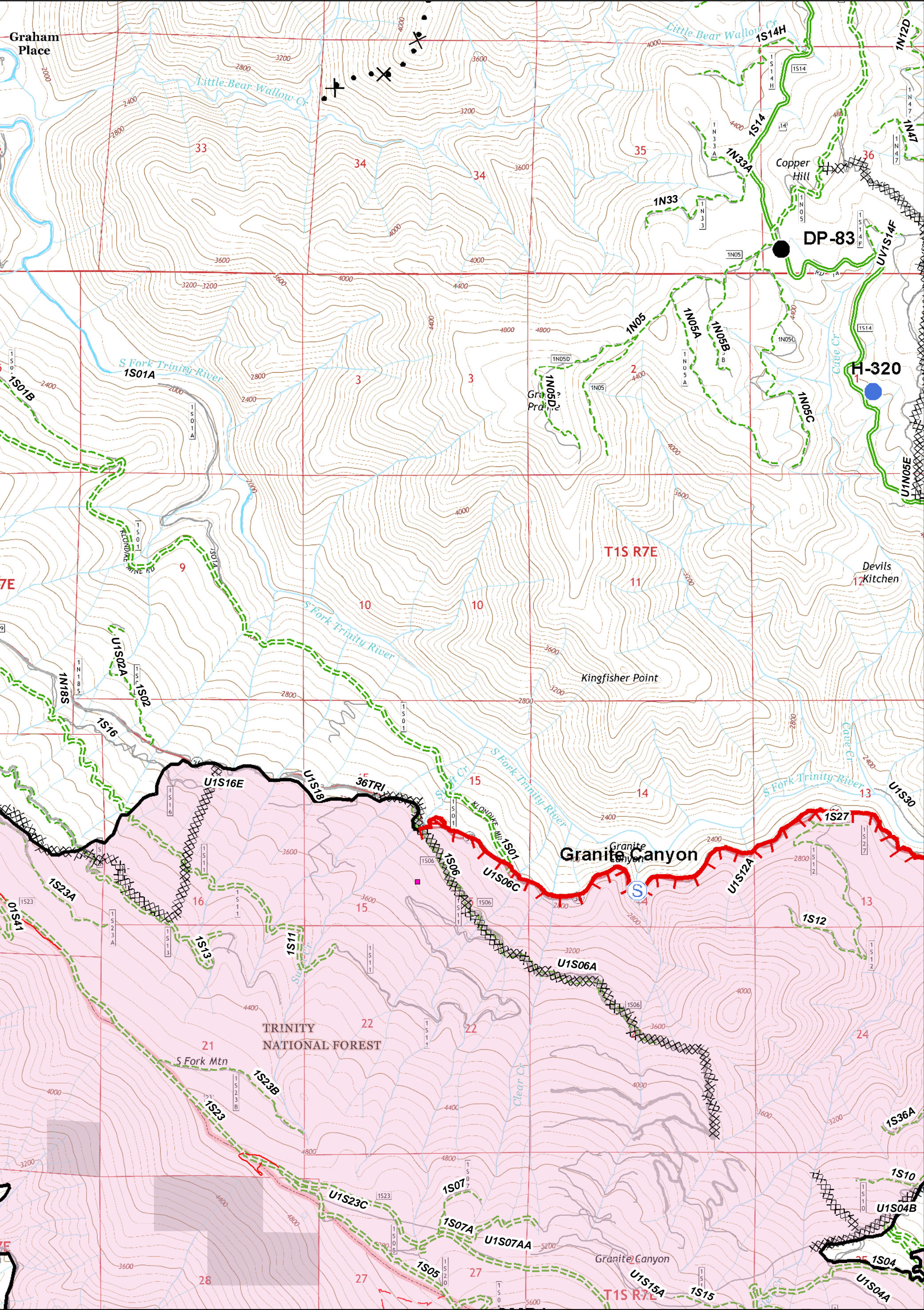


Division	Drop Point	Structures	Uncontrolled Fire Edge	Proposed Dozer Line	Six Rivers National Forest Administrative Boundary	Major Roads	Dirt	Closed
Branch	Helibase	Safety Zone	Completed Dozer Line	Handline	Forest Trail	Local Streets	Paved	4WD
ICP	Helispot	Repeater	Completed Line					
Retardant Gel Plant	Staging Area	Water Source						
	Restricted Water Source							

0 0.25 0.5 0.75 1 Miles

UTM Zone 10N  
NAD83



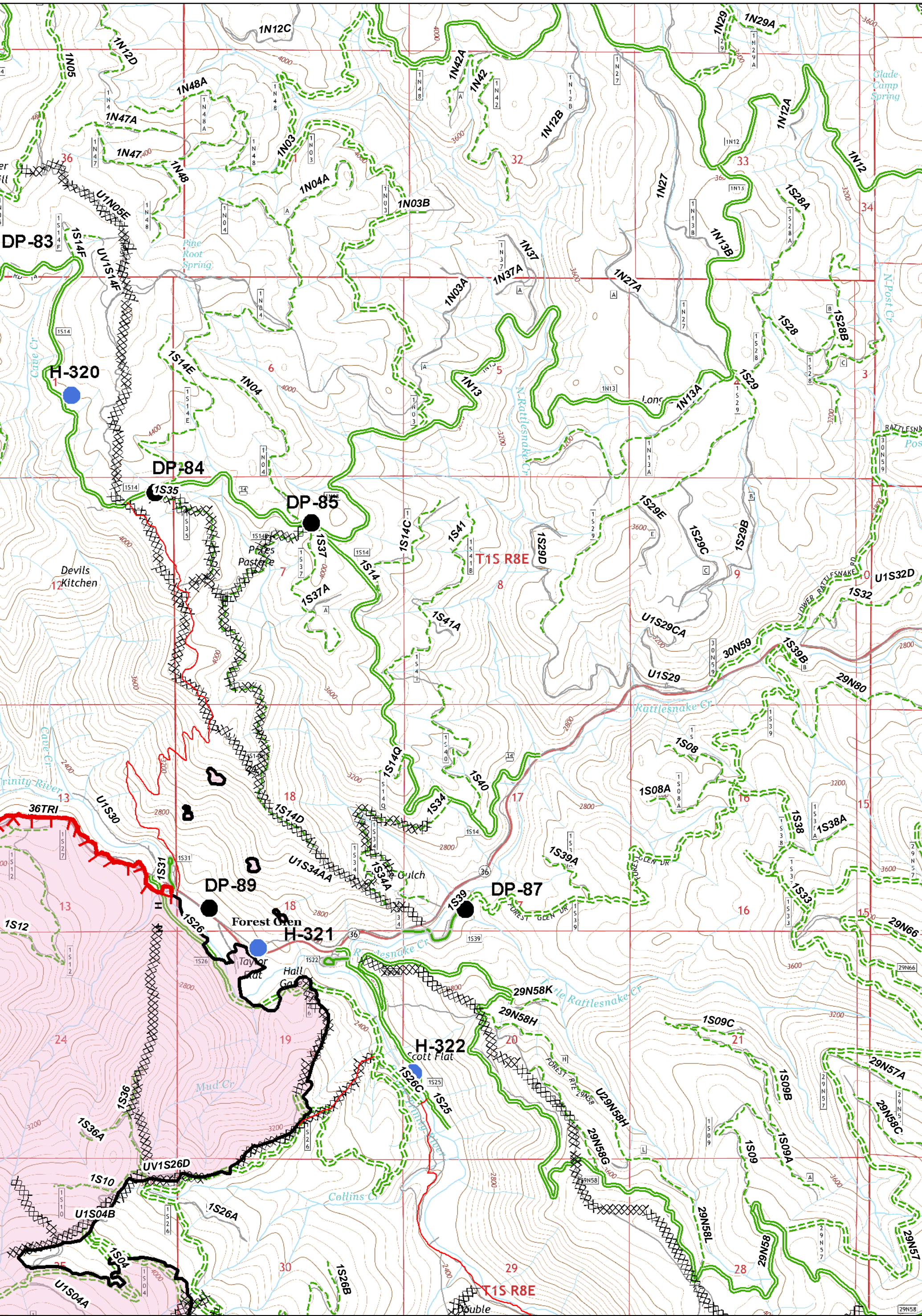


Division	Drop Point	Structures	Uncontrolled Fire Edge	Proposed Dozer Line	Six Rivers National Forest Administrative Boundary	Major Roads	Dirt	Closed
Branch	Helibase	Safety Zone	Completed Dozer Line	Handline	Forest Trail	Local Streets	Paved	4WD
ICP	Helispot	Repeater	Completed Line					
Retardant Gel Plant	Staging Area	Water Source						
	Restricted Water Source							

0 0.25 0.5 0.75 1 Miles

UTM Zone 10N  
NAD83



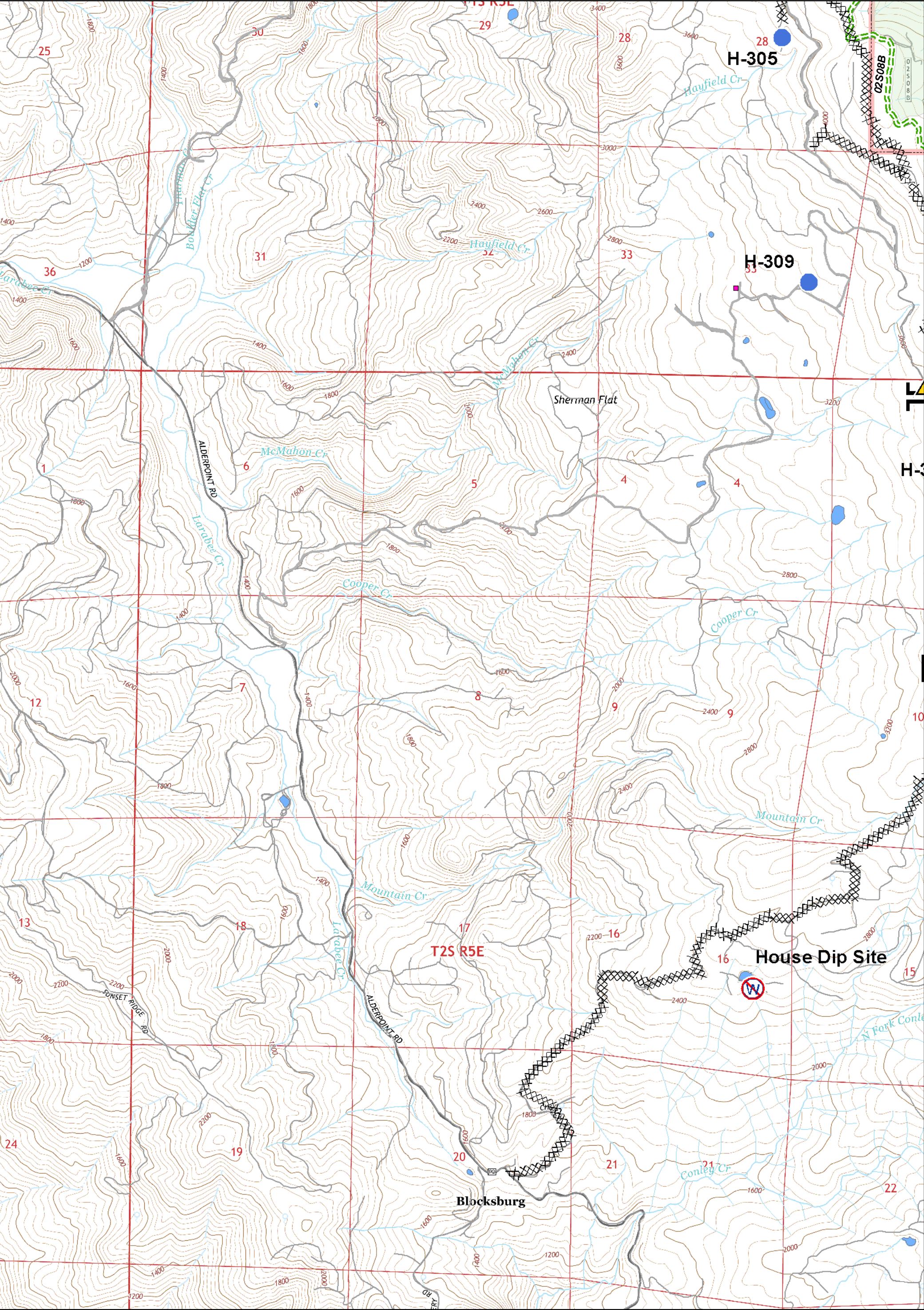


( ) Division	● Drop Point	■ Structures	— Uncontrolled Fire Edge	✕ Proposed Dozer Line
Branch	⊕ Helibase	▲ Safety Zone	⊗ Completed Dozer Line	H Handline
■ ICP	● Helispot	⊙ Repeater	— Completed Line	— Six Rivers National Forest Administrative Boundary
⊙ Staging Area	⊙ Water Source	⊙ Restricted Water Source	— Forest Trail	— Major Roads
⊙ Retardant Gel Plant				— Local Streets
				— Dirt
				— Closed
				— Paved
				— 4WD

0 0.25 0.5 0.75 1 Miles

UTM Zone 10N  
NAD83

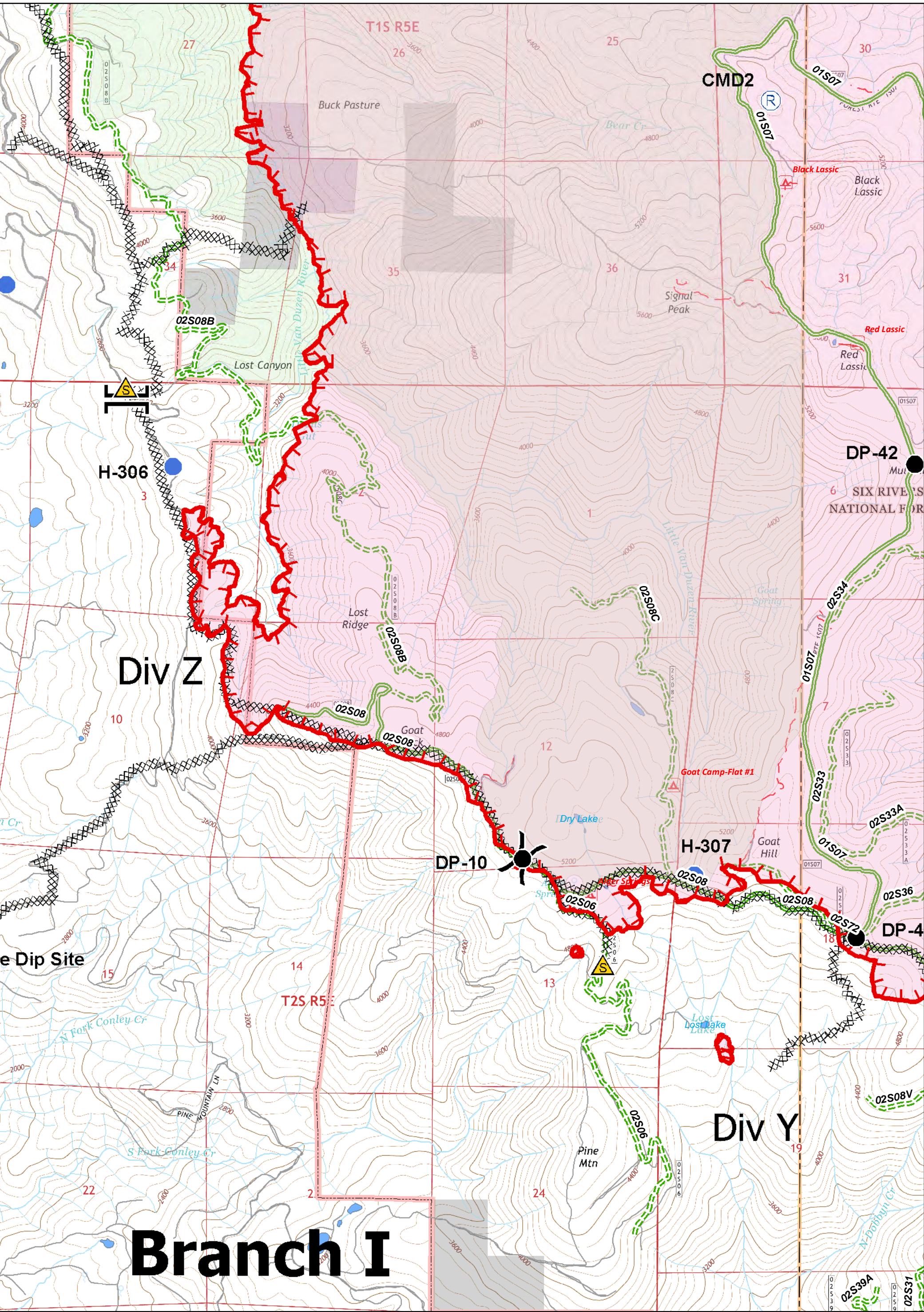




Division	Drop Point	Structures	Uncontrolled Fire Edge	Proposed Dozer Line	Six Rivers National Forest Administrative Boundary	Major Roads	Dirt	Closed
Branch	Helibase	Safety Zone	Completed Dozer Line	Handline	Forest Trail	Local Streets	Paved	4WD
ICP	Helispot	Repeater	Completed Line					
Retardant Gel Plant	Staging Area	Water Source						
	Restricted Water Source							

0 0.25 0.5 0.75 1 Miles  
 UTM Zone 10N NAD83



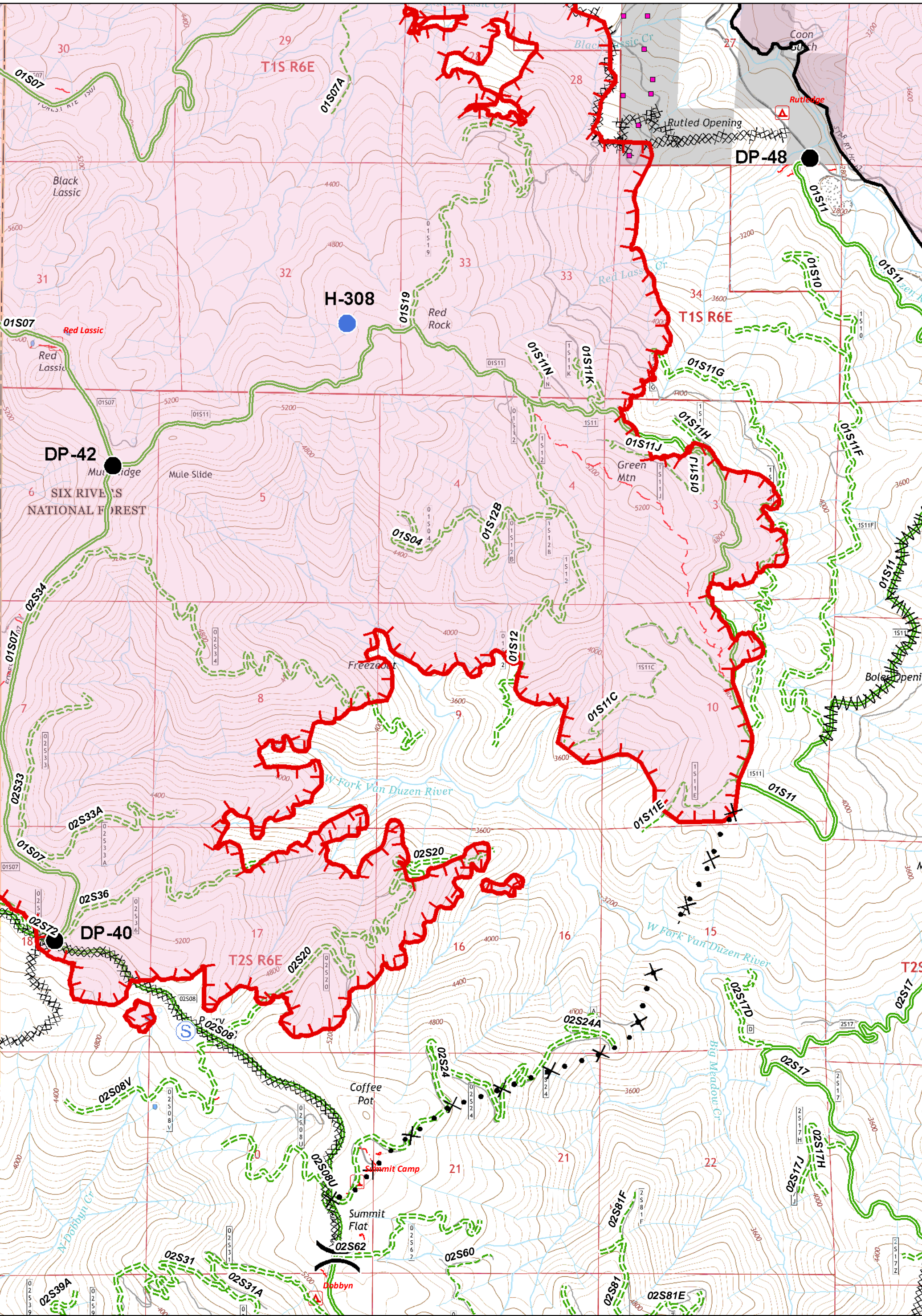


Division	Drop Point	Structures	Uncontrolled Fire Edge	Proposed Dozer Line
Branch	Helibase	Safety Zone	Completed Dozer Line	Handline
ICP	Helispot	Repeater	Completed Line	Six Rivers National Forest Administrative Boundary
Staging Area	Water Source	Forest Trail	Major Roads	Dirt
Retardant Gel Plant	Restricted Water Source	Local Streets	Paved	4WD

0 0.25 0.5 0.75 1 Miles

UTM Zone 10N  
NAD83



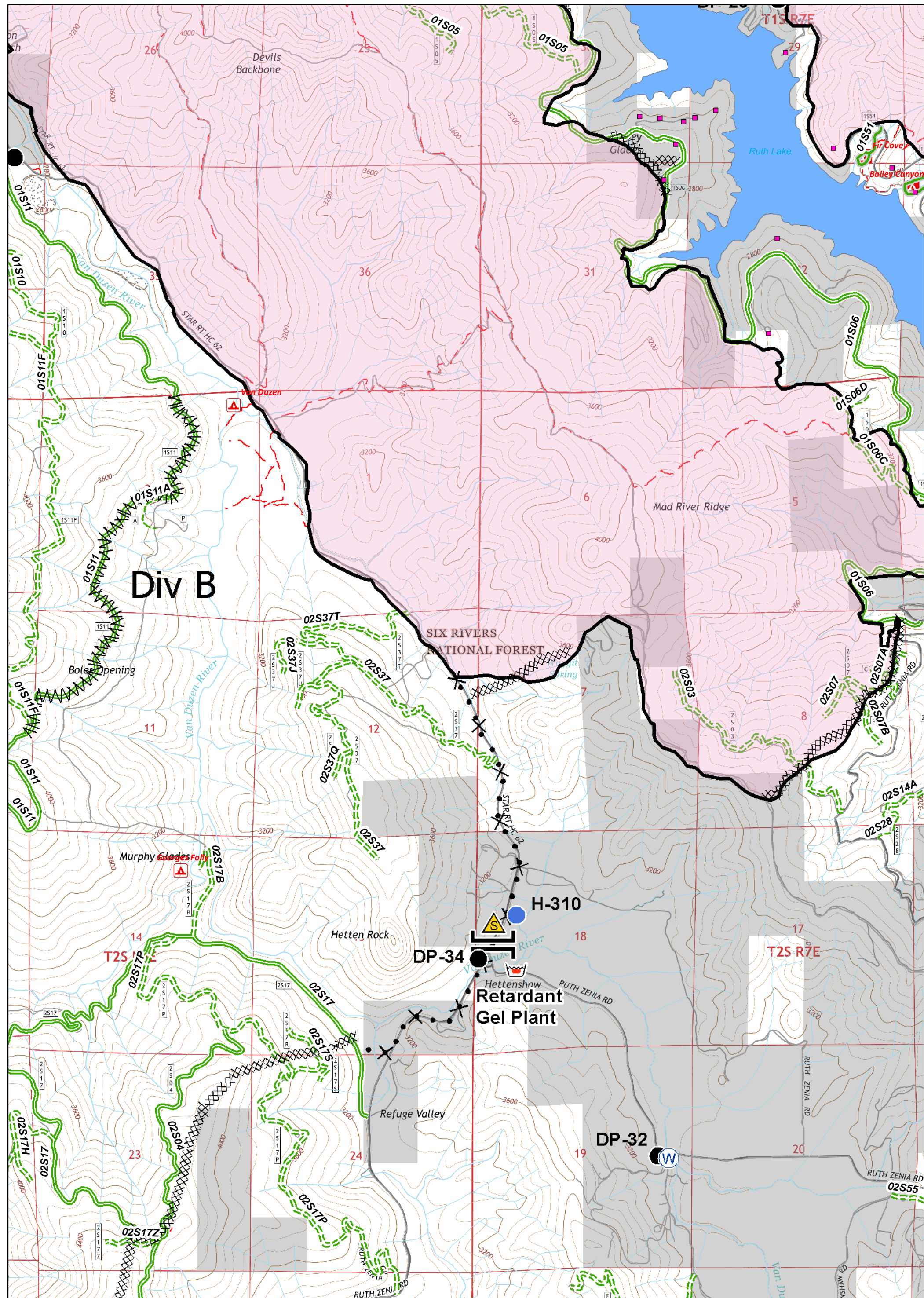


( ) Division	● Drop Point	■ Structures	— Uncontrolled Fire Edge	✕ Proposed Dozer Line	▭ Six Rivers National Forest Administrative Boundary	— Major Roads	— Dirt	— Closed
Branch	⊙ Helibase	▲ Safety Zone	— Completed Dozer Line	— Handline	— Forest Trail	— Local Streets	— Paved	— 4WD
■ ICP	● Helispot	⊙ Repeater	— Completed Line					
⊙ Staging Area	⊙ Water Source	⊙ Retardant Gel Plant						

0 0.25 0.5 0.75 1 Miles

UTM Zone 10N  
NAD83



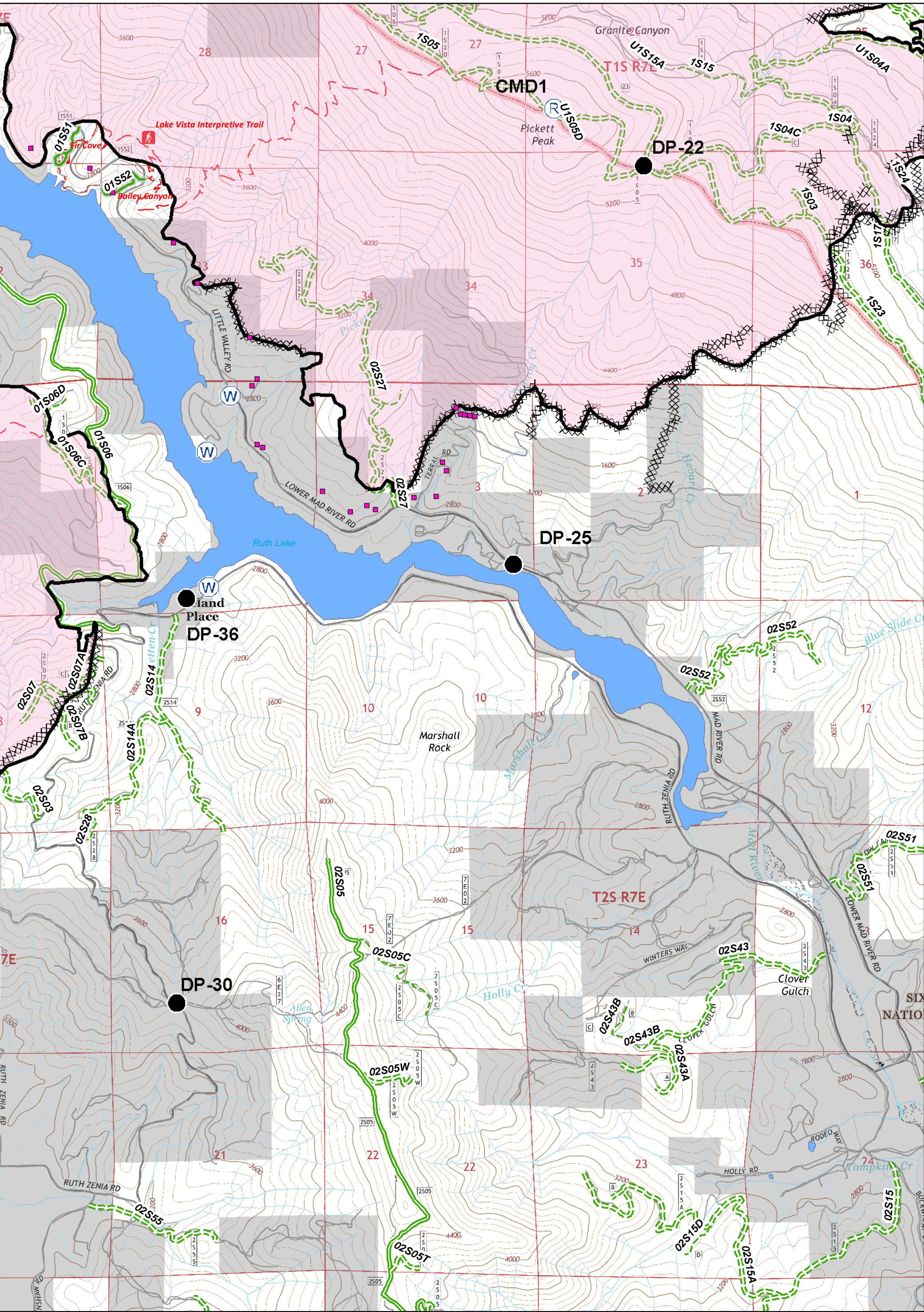


Division	Drop Point	Structures	Uncontrolled Fire Edge	Proposed Dozer Line	Six Rivers National Forest Administrative Boundary	Major Roads	Dirt	Closed
Branch	Helibase	Safety Zone	Completed Dozer Line	Handline	Forest Trail	Local Streets	Paved	4WD
ICP	Helispot	Repeater	Completed Line					
Retardant Gel Plant	Staging Area	Water Source						
	Restricted Water Source							

0 0.25 0.5 0.75 1 Miles

UTM Zone 10N  
NAD83



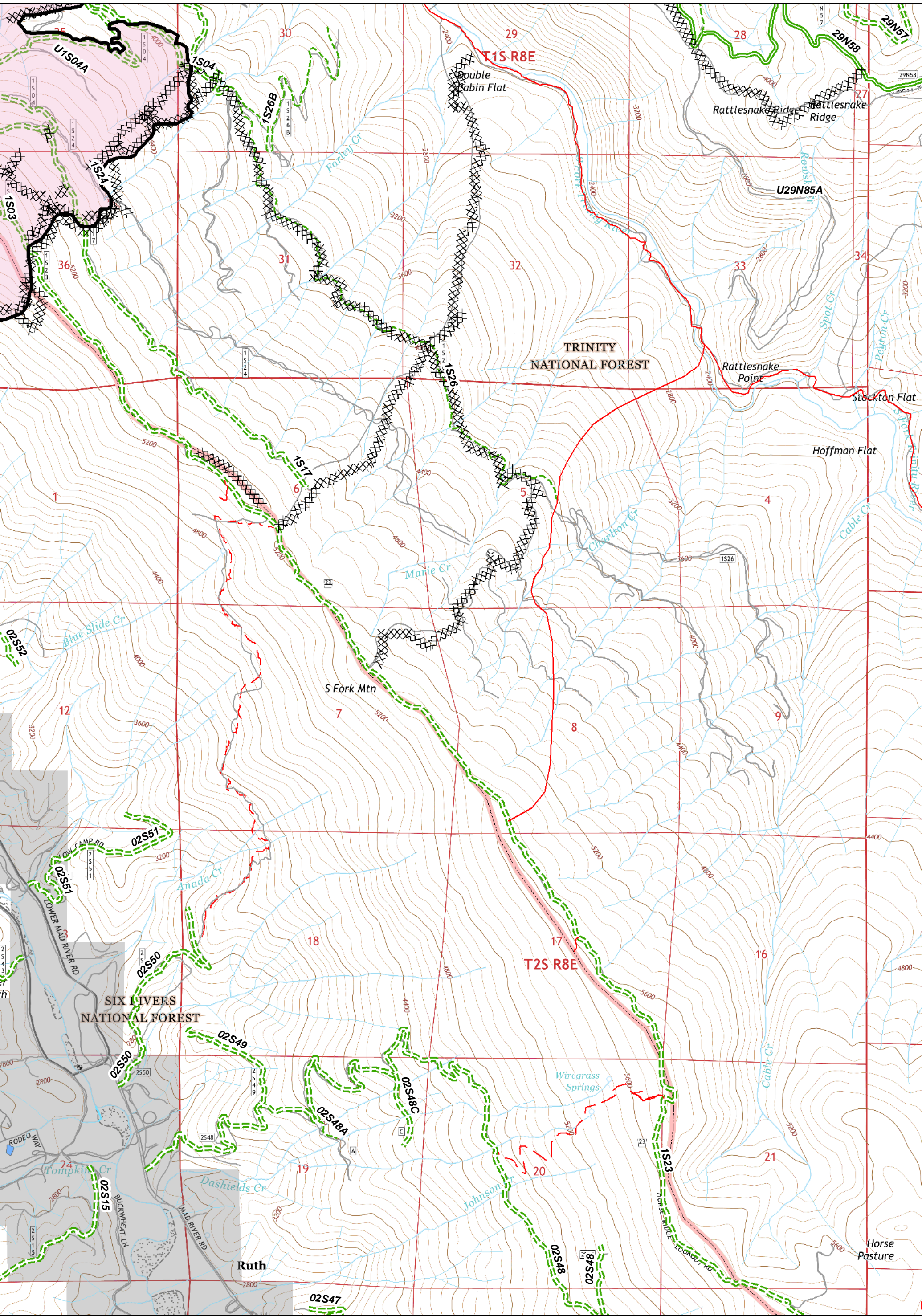


Division	Drop Point	Structures	Uncontrolled Fire Edge	Proposed Dozer Line	Six Rivers National Forest Administrative Boundary	Major Roads	Dirt	Closed
Branch	Helibase	Safety Zone	Completed Dozer Line	Handline	Forest Trail	Local Streets	Paved	4WD
ICP	Helispot	Repeater	Completed Line					
Retardant Gel Plant	Staging Area	Water Source						
	Restricted Water Source							

0 0.25 0.5 0.75 1 Miles

UTM Zone 10N  
NAD83



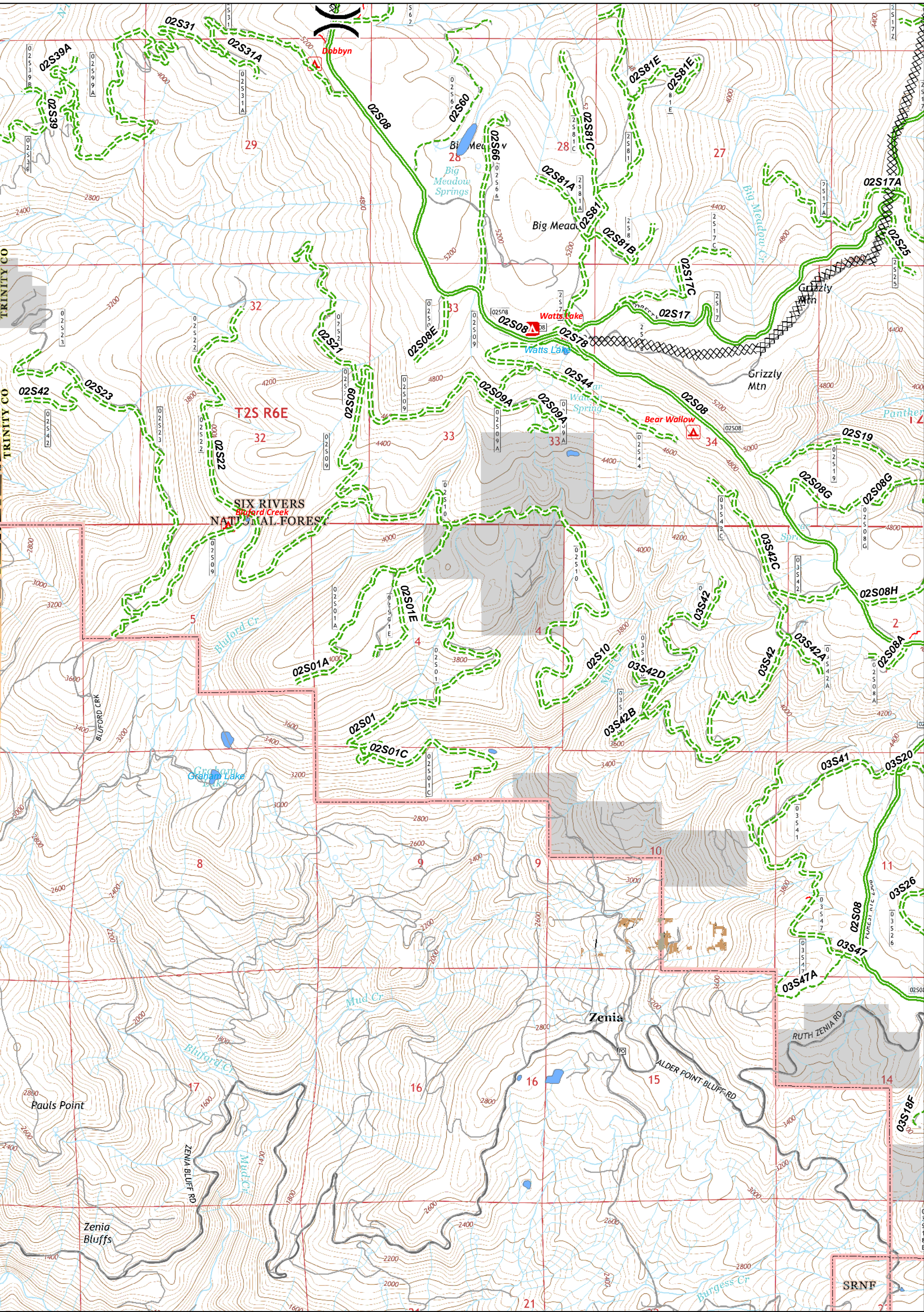


( ) Division	● Drop Point	■ Structures	— Uncontrolled Fire Edge	✕ Proposed Dozer Line	▭ Six Rivers National Forest Administrative Boundary	— Major Roads	— Dirt	— Closed
Branch	⊕ Helibase	▲ Safety Zone	⊗ Completed Dozer Line	⊙ Handline	— Forest Trail	— Local Streets	— Paved	— 4WD
■ ICP	⊙ Helispot	⊙ Repeater	— Completed Line					
⊙ Retardant Gel Plant	⊙ Staging Area	⊙ Water Source						
	⊙ Restricted Water Source							

0 0.25 0.5 0.75 1 Miles

UTM Zone 10N  
NAD83





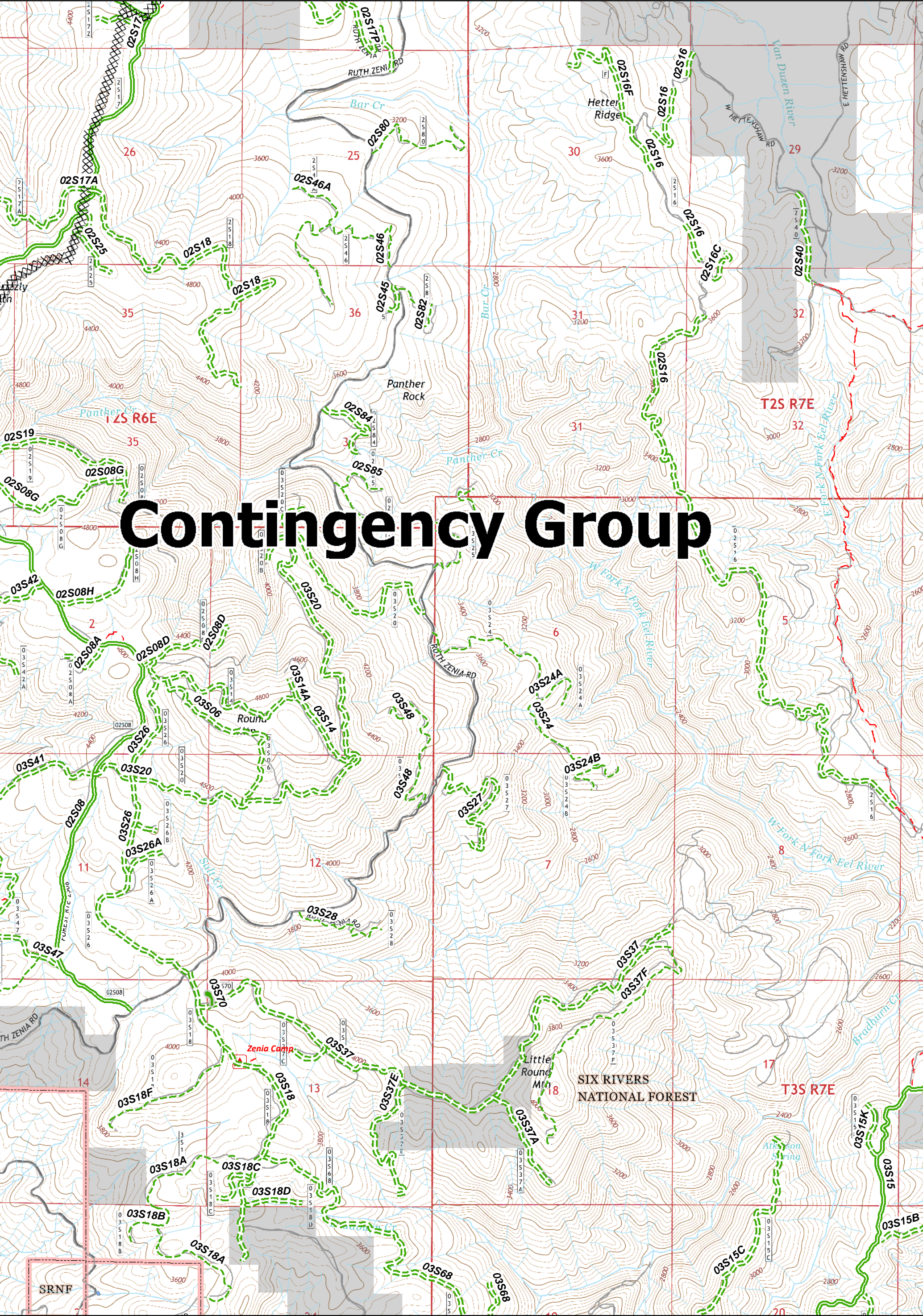
Division	Drop Point	Structures	Uncontrolled Fire Edge	Proposed Dozer Line
Branch	Helibase	Safety Zone	Completed Dozer Line	Handline
ICP	Helispot	Repeater	Completed Line	Six Rivers National Forest Administrative Boundary
Staging Area	Water Source	Restricted Water Source	Forest Trail	Major Roads
Retardant Gel Plant				Local Streets
				Dirt
				Paved
				4WD

0 0.25 0.5 0.75 1 Miles

UTM Zone 10N  
NAD83

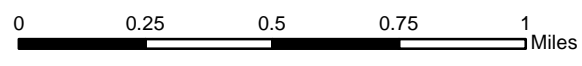


# Contingency Group



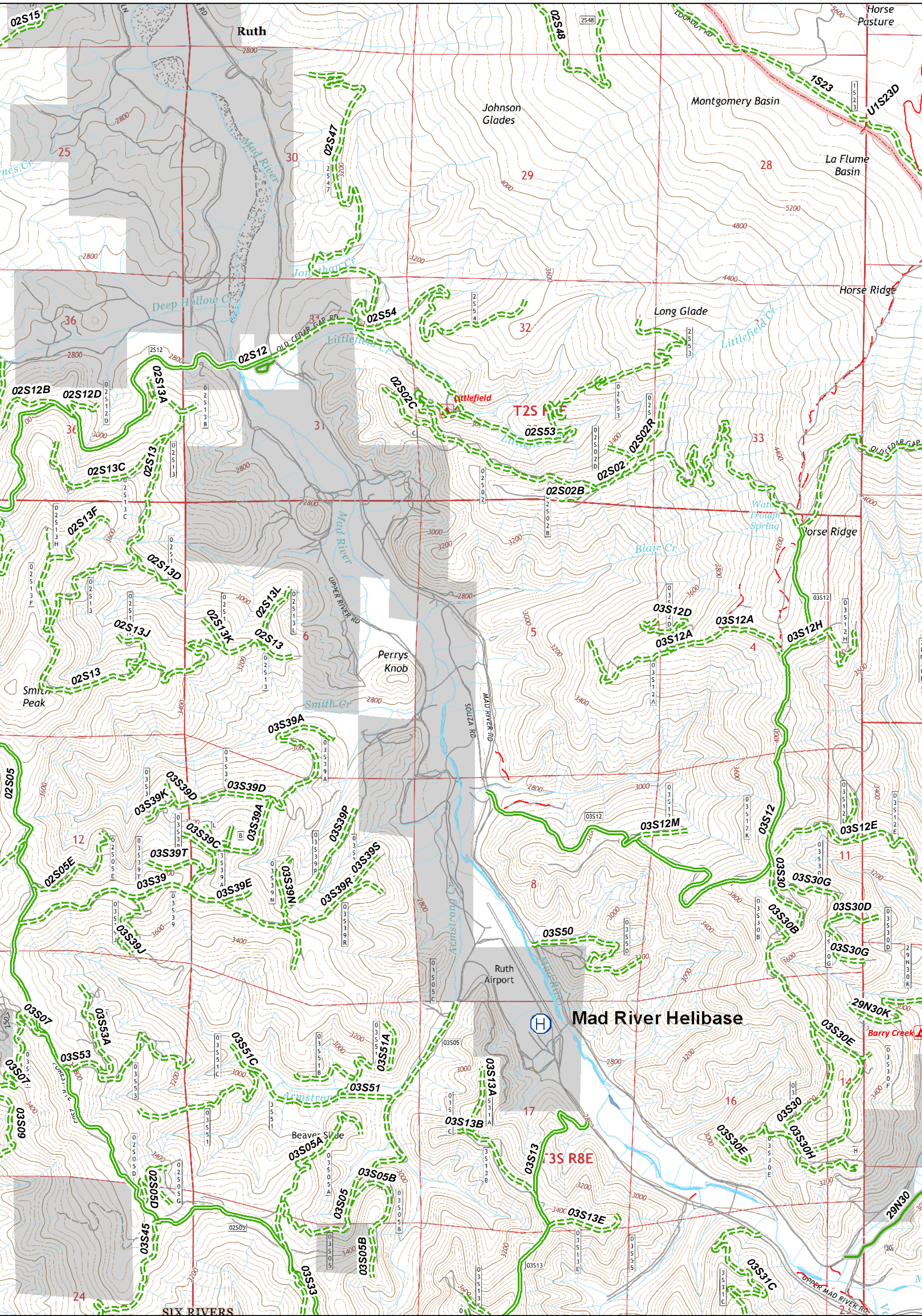
- Division
- Drop Point
- Structures
- Uncontrolled Fire Edge
- Proposed Dozer Line
- Branch
- Helibase
- Safety Zone
- Completed Dozer Line
- Handline
- ICP
- Helispot
- Repeater
- Completed Line
- Staging Area
- Water Source
- Retardant Gel Plant
- Restricted Water Source

- Six Rivers National Forest Administrative Boundary
- Forest Trail
- Major Roads
- Local Streets
- Dirt
- Paved
- Closed
- 4WD



UTM Zone 10N  
NAD83





Division	Drop Point	Structures	Uncontrolled Fire Edge	Proposed Dozer Line	Six Rivers National Forest Administrative Boundary	Major Roads	Dirt	Closed
Branch	Helibase	Safety Zone	Completed Dozer Line	Handline	Forest Trail	Local Streets	Paved	4WD
ICP	Helispot	Repeater	Completed Line					
Retardant Gel Plant	Staging Area	Water Source						
	Restricted Water Source							

0 0.25 0.5 0.75 1 Miles

UTM Zone 10N  
NAD83