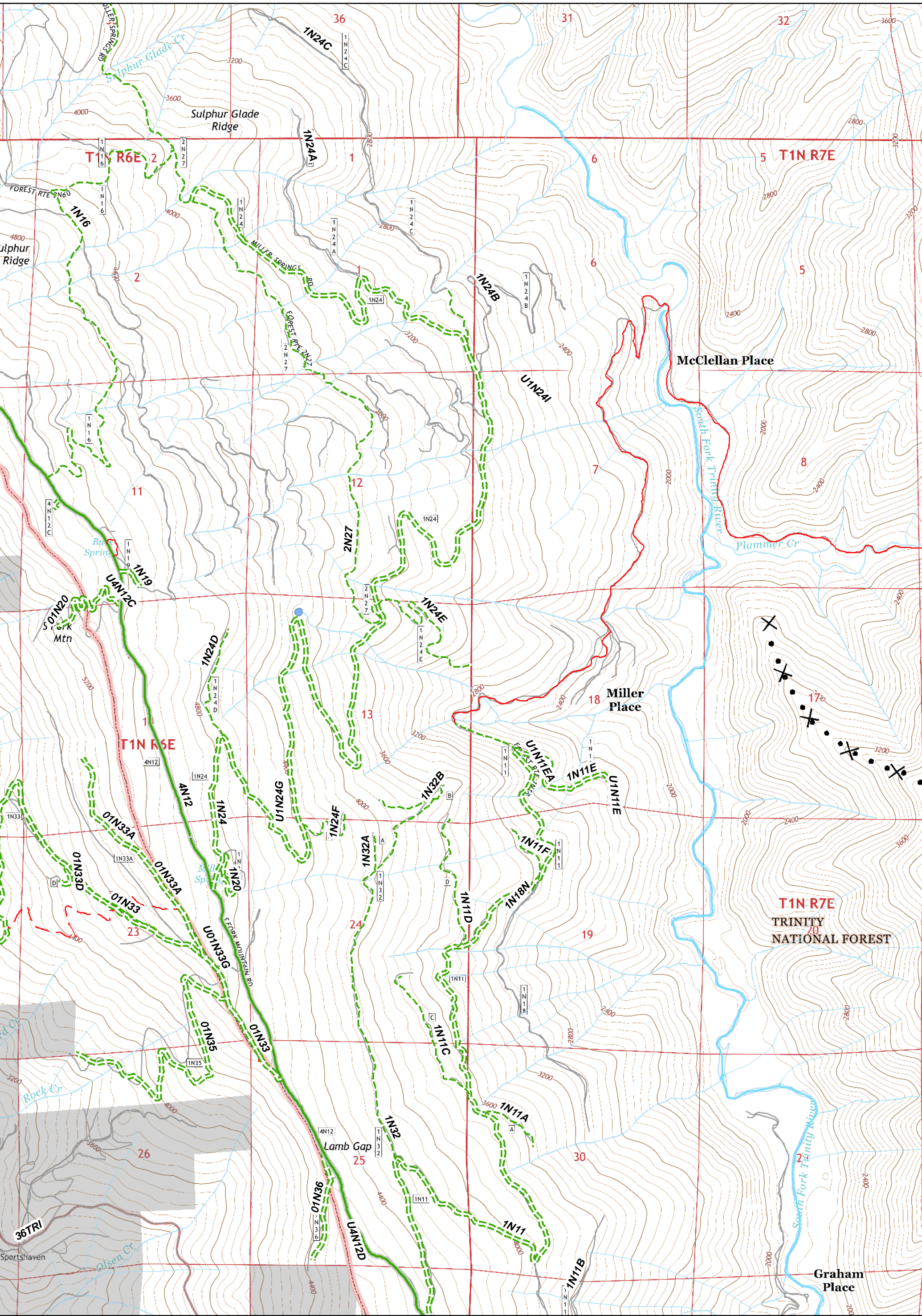


Division	Drop Point	Structures	Uncontrolled Fire Edge	Proposed Dozer Line	Six Rivers National Forest Administrative Boundary	Major Roads	Dirt	Closed
Branch	Helibase	Safety Zone	Completed Dozer Line	Handline	Forest Trail	Local Streets	Paved	4WD
ICP	Helispot	Repeater	Completed Line	Line Break Completed				
Gel Plant	Staging Area	Water Source	Restricted Water Source					

UTM Zone 10N  
NAD83



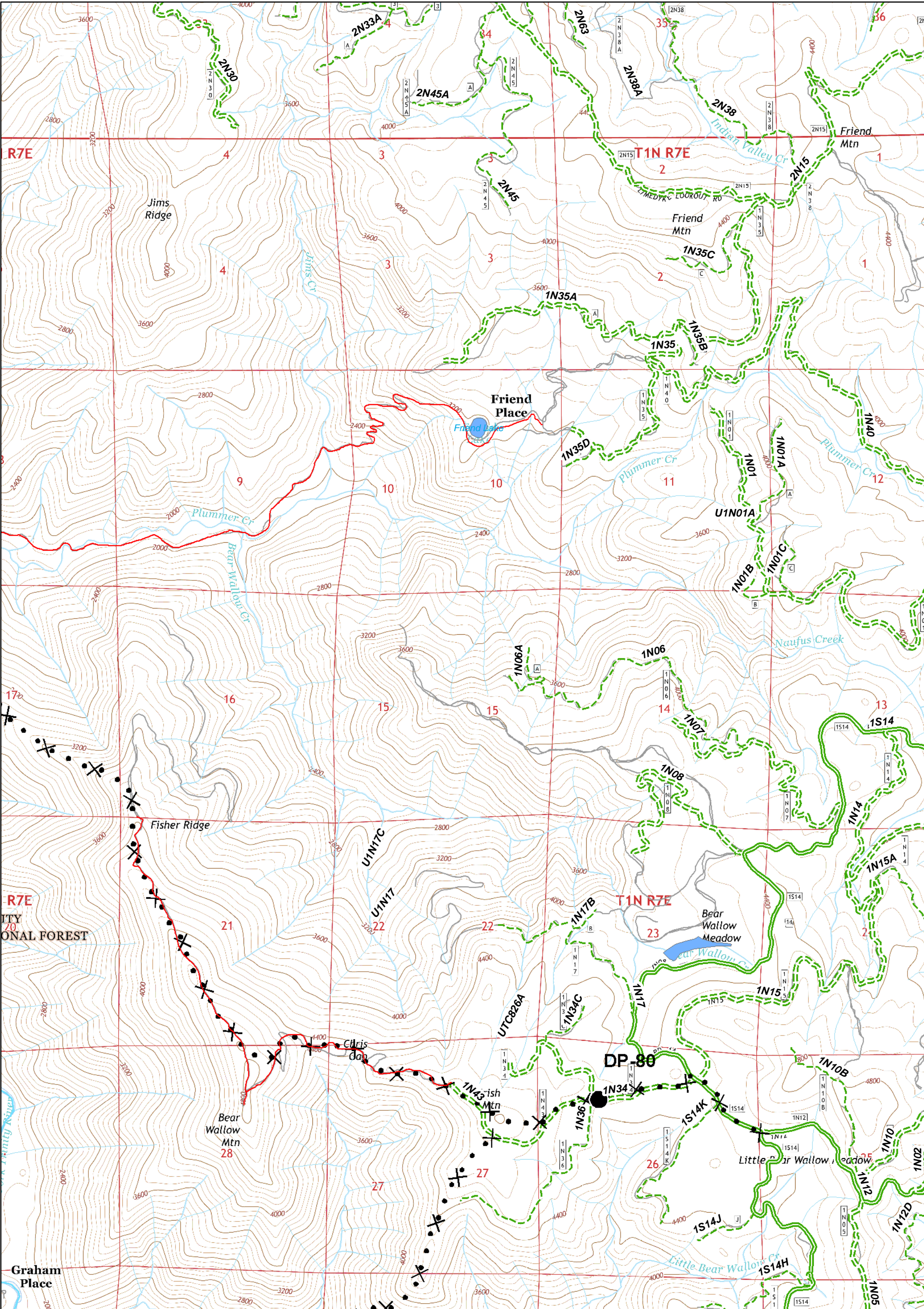


( ) Division	● Drop Point	■ Structures	— Uncontrolled Fire Edge	✕ Proposed Dozer Line	— Six Rivers National Forest Administrative Boundary	— Major Roads	— Dirt	— Closed
Branch	⊕ Helibase	▲ Safety Zone	— Completed Dozer Line	⊕ Handline	— Forest Trail	— Local Streets	— Paved	— 4WD
■ ICP	● Helispot	⊙ Repeater	— Completed Line	— Line Break Completed				
🌳 Gel Plant	⊙ Staging Area	⊙ Water Source						
	⊙ Restricted Water Source							

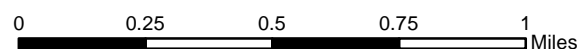
0 0.25 0.5 0.75 1 Miles

UTM Zone 10N  
NAD83





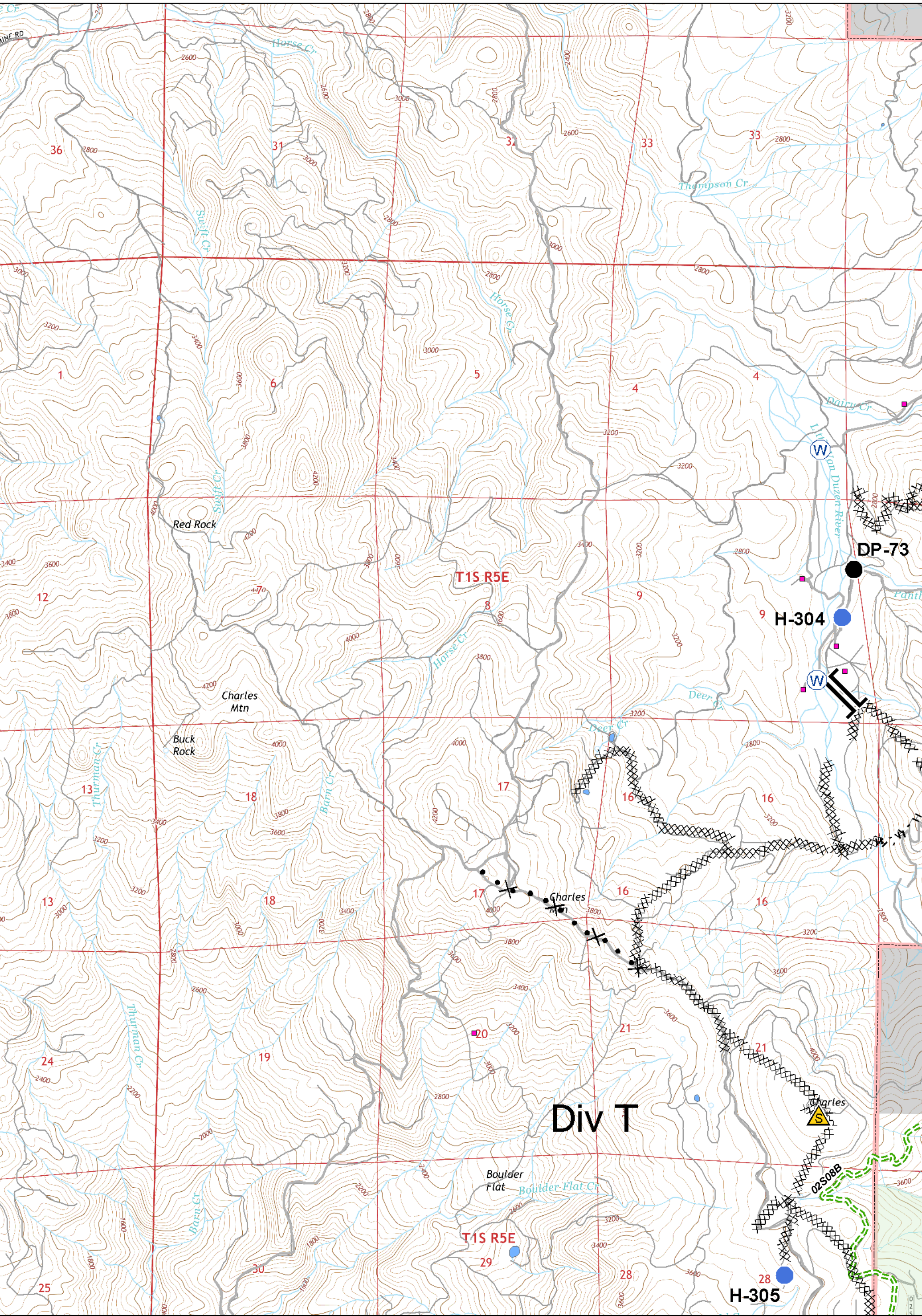
- Division
- Drop Point
- Structures
- Uncontrolled Fire Edge
- Proposed Dozer Line
- Six Rivers National Forest Administrative Boundary
- Major Roads
- Dirt
- Closed
- Branch
- Helibase
- Safety Zone
- Completed Dozer Line
- Handline
- Forest Trail
- Local Streets
- Paved
- 4WD
- ICP
- Helispot
- Repeater
- Completed Line
- Line Break Completed
- Gel Plant
- Staging Area
- Water Source
- Restricted Water Source



UTM Zone 10N  
NAD83





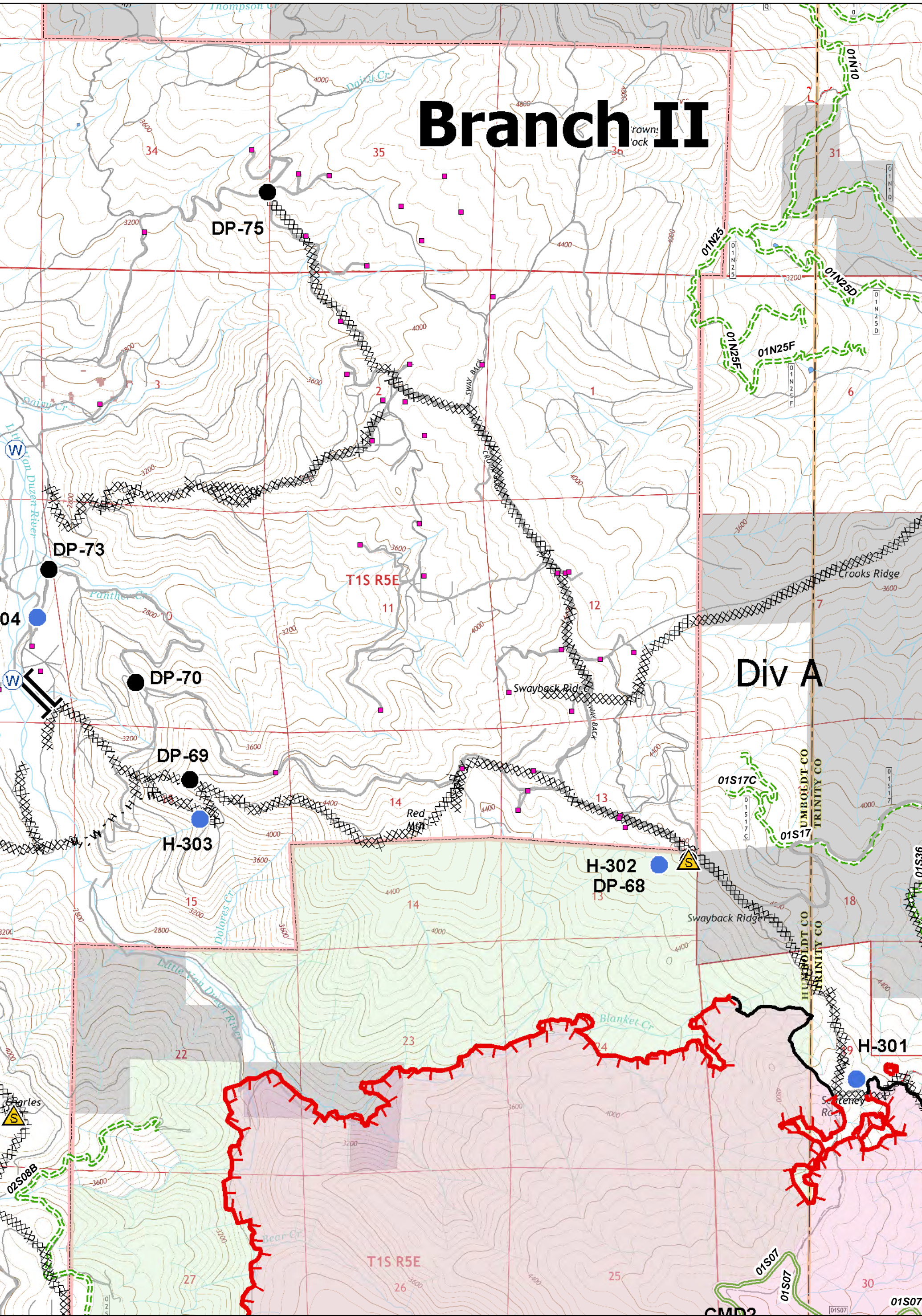


Division	Drop Point	Structures	Uncontrolled Fire Edge	Proposed Dozer Line	Six Rivers National Forest Administrative Boundary	Major Roads	Dirt	Closed
Branch	Helibase	Safety Zone	Completed Dozer Line	Handline	Forest Trail	Local Streets	Paved	4WD
ICP	Helispot	Repeater	Completed Line	Line Break Completed				
Gel Plant	Staging Area	Water Source	Restricted Water Source					

0 0.25 0.5 0.75 1 Miles  
 UTM Zone 10N NAD83



# Branch II

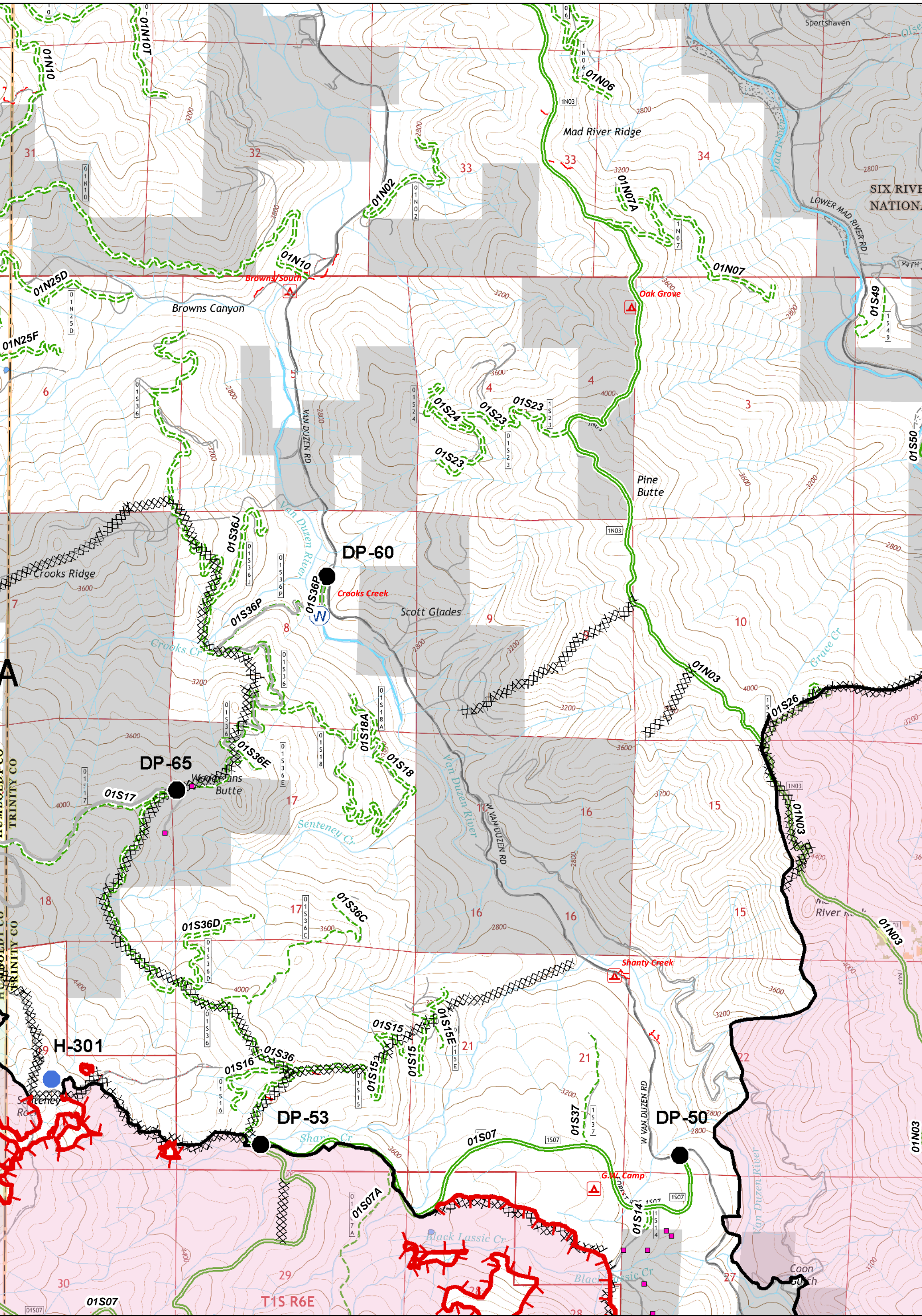


( ) Division	● Drop Point	■ Structures	— Uncontrolled Fire Edge	✕ Proposed Dozer Line	▭ Six Rivers National Forest Administrative Boundary	— Major Roads	— Dirt	— Closed
Branch	⊕ Helibase	▲ Safety Zone	⊗ Completed Dozer Line	H Handline	▭ Humboldt Co Administrative Boundary	— Local Streets	— Paved	— 4WD
■ ICP	● Helispot	⊕ Repeater	— Completed Line	⊗ Line Break Completed	— Forest Trail			
⊕ Gel Plant	⊕ Staging Area	⊕ Water Source						
	⊕ Restricted Water Source							

0 0.25 0.5 0.75 1 Miles

UTM Zone 10N  
NAD83



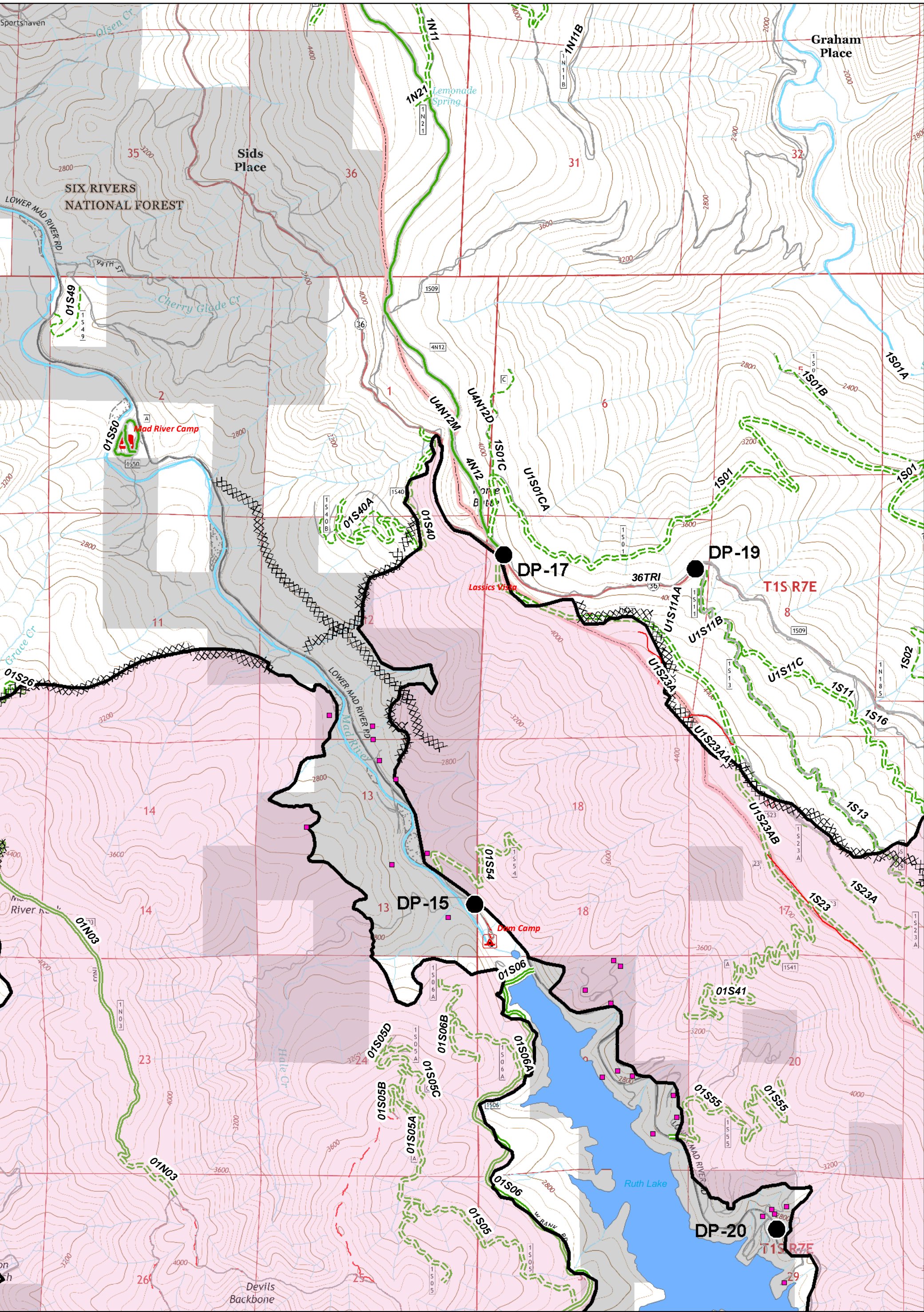


( ) Division	● Drop Point	■ Structures	— Uncontrolled Fire Edge	✕ Proposed Dozer Line	▭ Six Rivers National Forest Administrative Boundary	— Major Roads	— Dirt	— Closed
Branch	⊕ Helibase	⚠ Safety Zone	XX Completed Dozer Line	H Handline	▭ Forest Trail	— Local Streets	— Paved	— 4WD
⊕ ICP	⊕ Helispot	⊕ Repeater	— Completed Line	M Line Break Completed				
⊕ Gel Plant	⊕ Staging Area	⊕ Water Source						
	⊕ Restricted Water Source							

0 0.25 0.5 0.75 1 Miles

UTM Zone 10N  
NAD83



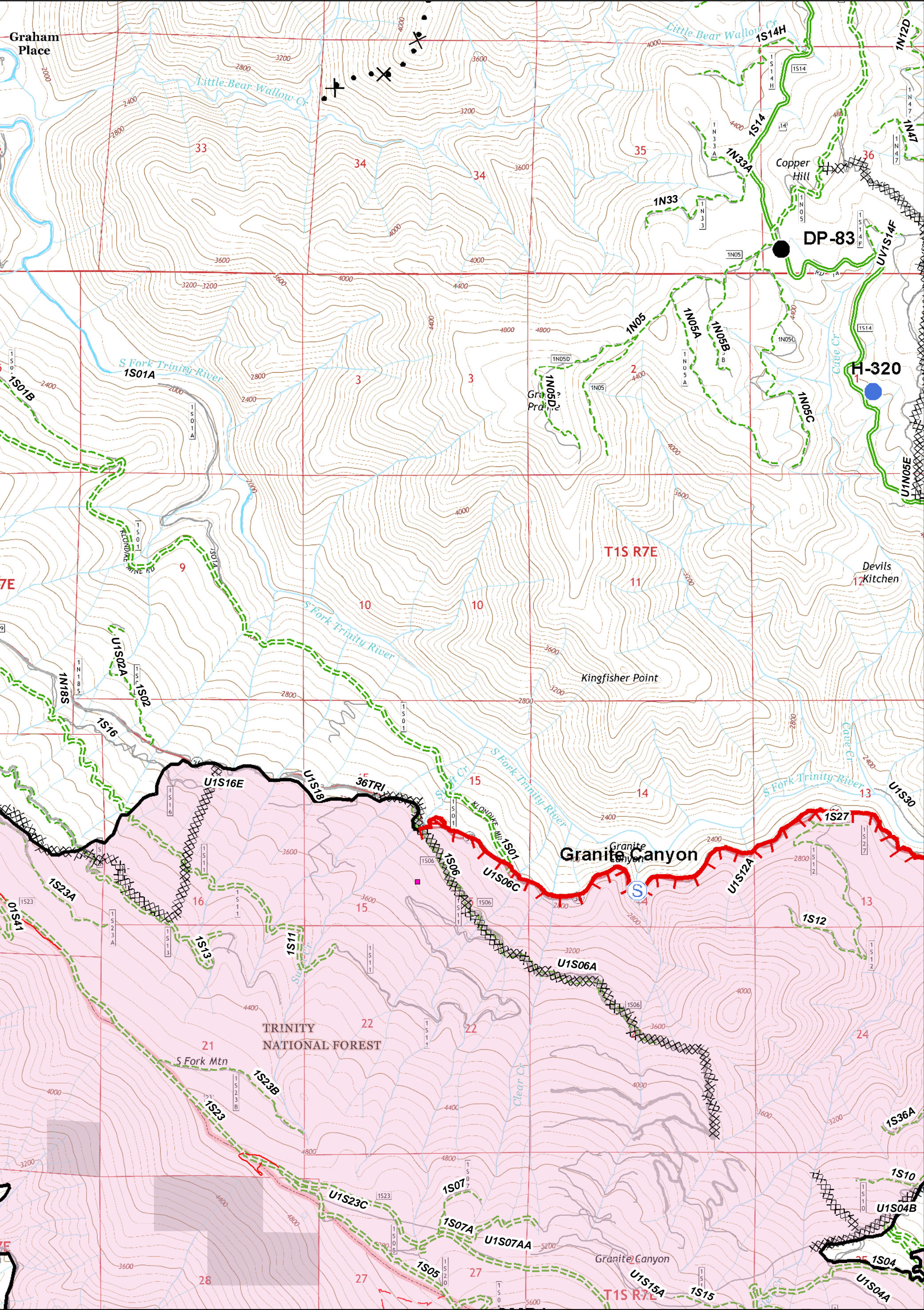


Division	Drop Point	Structures	Uncontrolled Fire Edge	Proposed Dozer Line	Six Rivers National Forest Administrative Boundary	Major Roads	Dirt	Closed
Branch	Helibase	Safety Zone	Completed Dozer Line	Handline	Forest Trail	Local Streets	Paved	4WD
ICP	Helispot	Repeater	Completed Line	Line Break Completed				
Gel Plant	Staging Area	Water Source	Restricted Water Source					

0 0.25 0.5 0.75 1 Miles

UTM Zone 10N  
NAD83



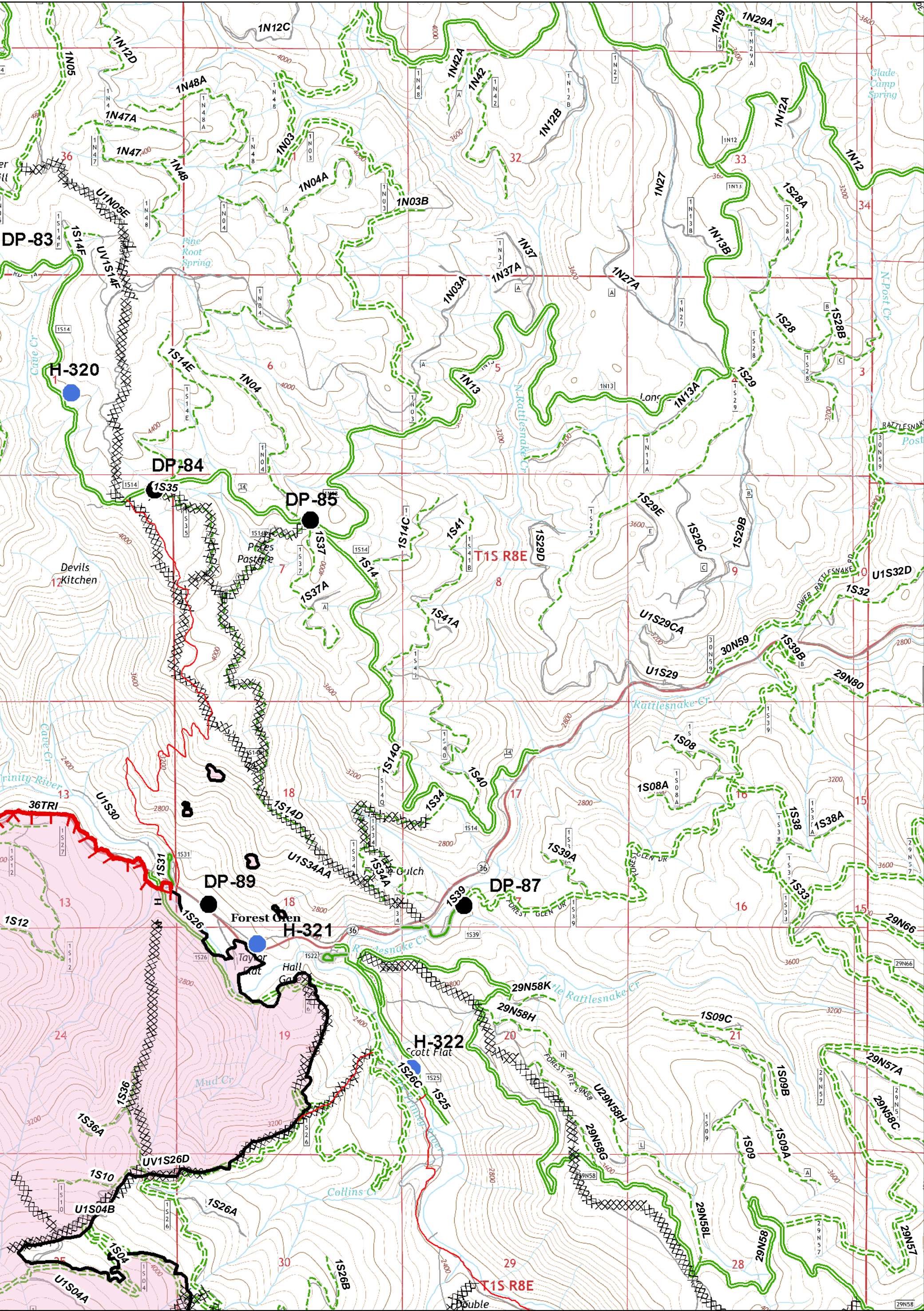


Division	Drop Point	Structures	Uncontrolled Fire Edge	Proposed Dozer Line	Six Rivers National Forest Administrative Boundary	Major Roads	Dirt	Closed
Branch	Helibase	Safety Zone	Completed Dozer Line	Handline	Forest Trail	Local Streets	Paved	4WD
ICP	Helispot	Repeater	Completed Line	Line Break Completed				
Gel Plant	Staging Area	Water Source	Restricted Water Source					

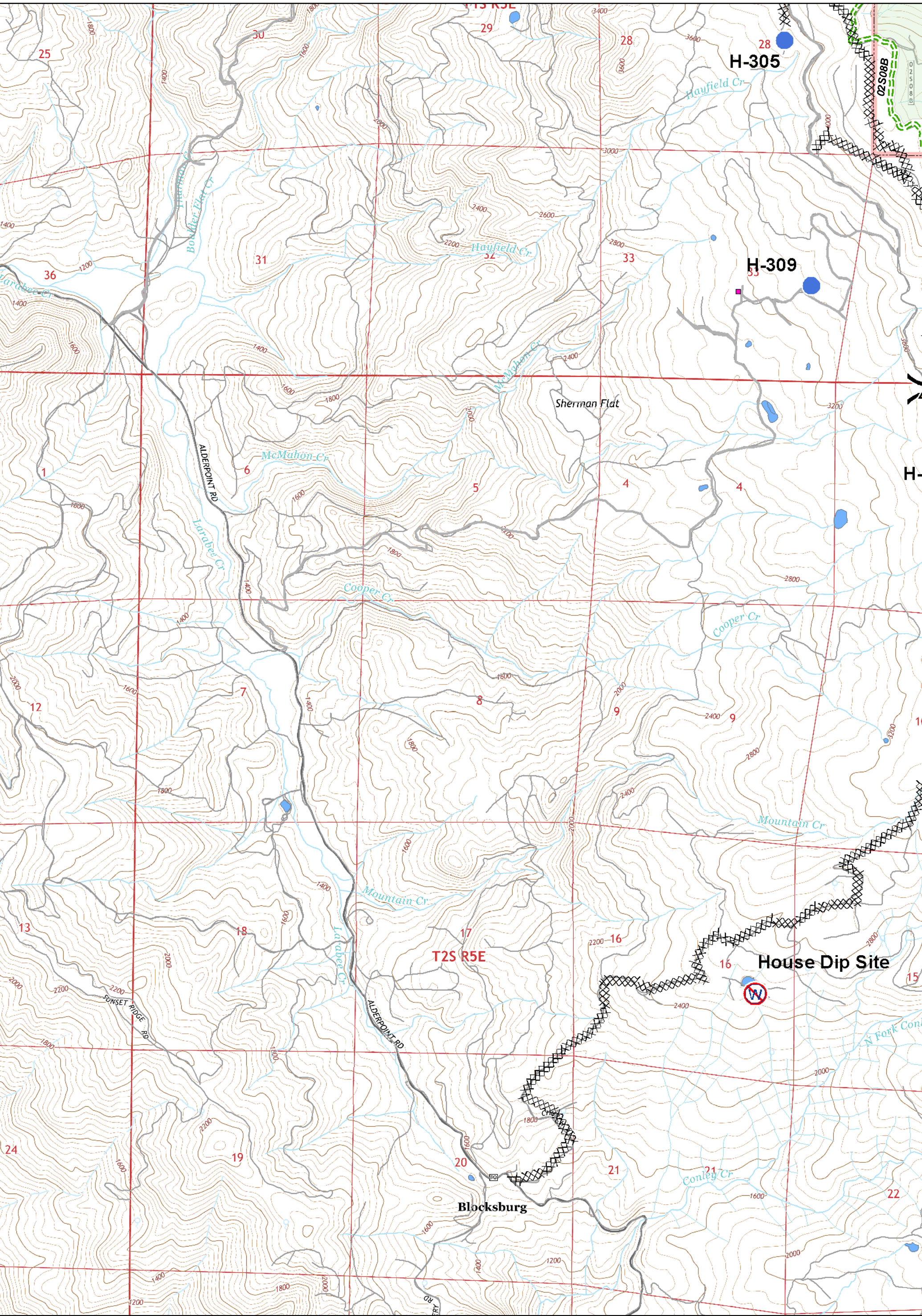
0 0.25 0.5 0.75 1 Miles

UTM Zone 10N  
NAD83







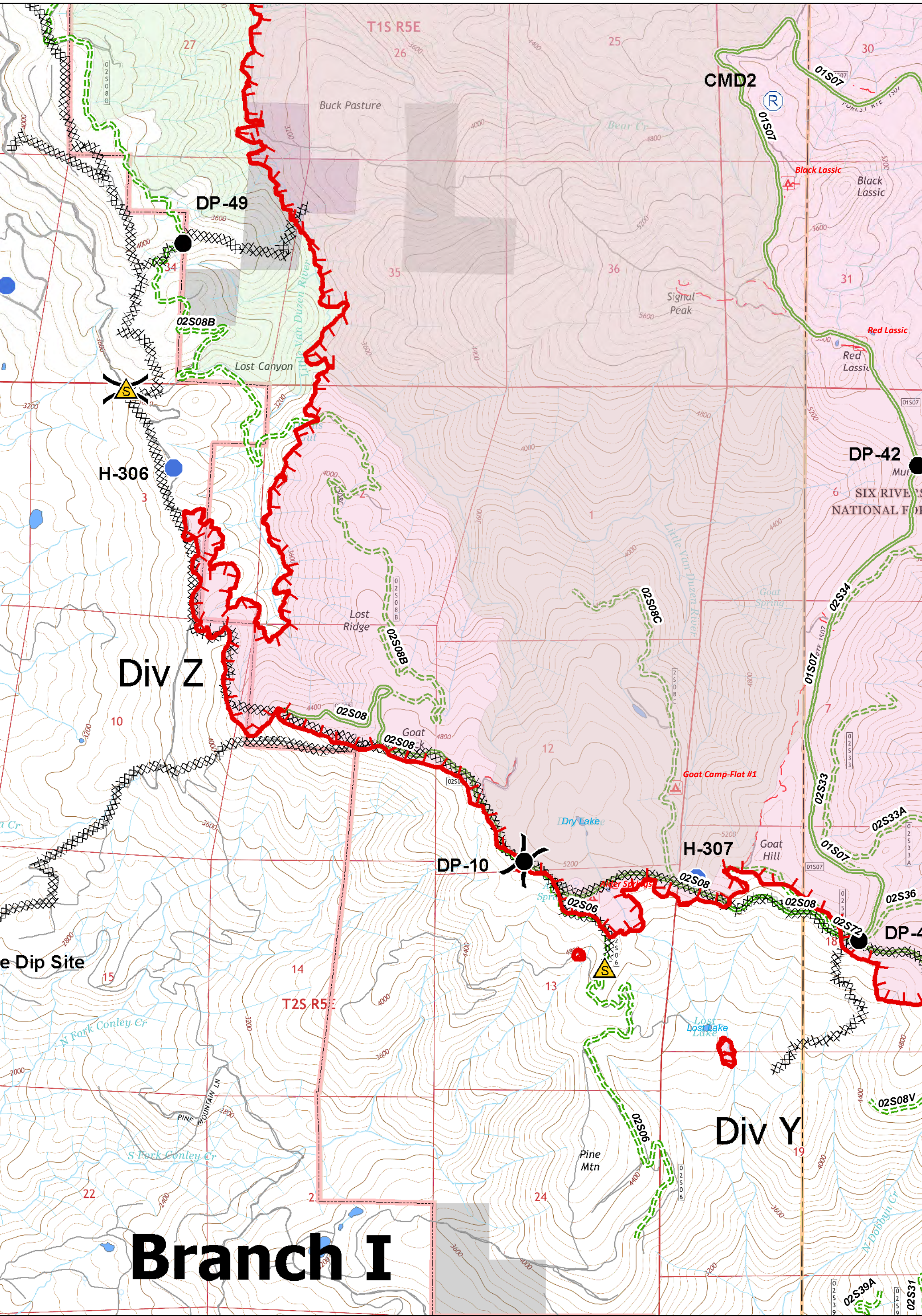


Division	Drop Point	Structures	Uncontrolled Fire Edge	Proposed Dozer Line	Six Rivers National Forest Administrative Boundary	Major Roads	Dirt	Closed
Branch	Helibase	Safety Zone	Completed Dozer Line	Handline	Forest Trail	Local Streets	Paved	4WD
ICP	Helispot	Repeater	Completed Line	Line Break Completed				
Gel Plant	Staging Area	Water Source						
	Restricted Water Source							

0 0.25 0.5 0.75 1 Miles

UTM Zone 10N  
NAD83



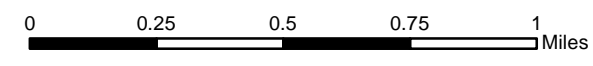


Div Z

Div Y

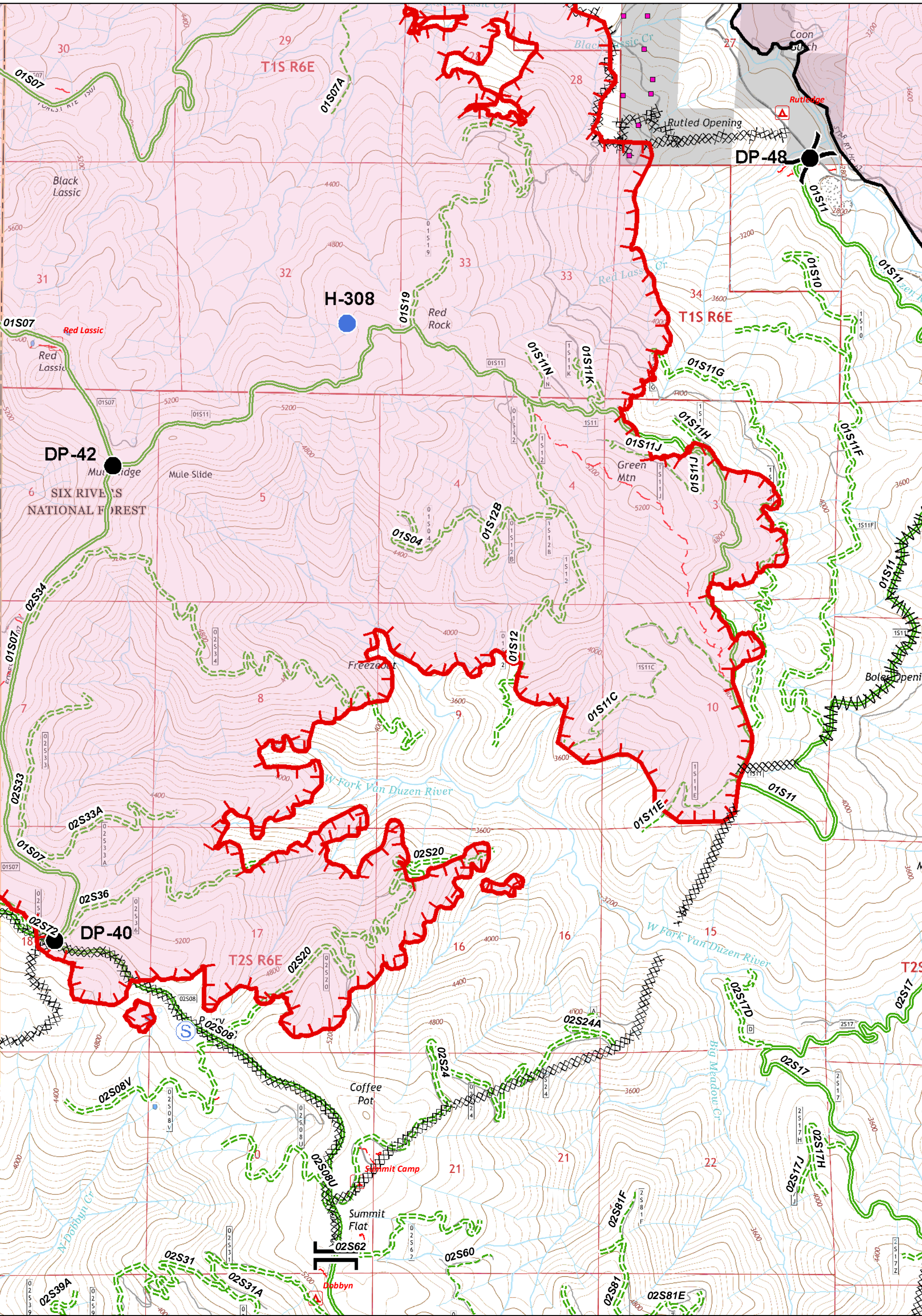
# Branch I

Division	Drop Point	Structures	Uncontrolled Fire Edge	Proposed Dozer Line	Six Rivers National Forest Administrative Boundary	Major Roads	Dirt	Closed
Branch	Helibase	Safety Zone	Completed Dozer Line	Handline	Forest Trail	Local Streets	Paved	4WD
ICP	Helispot	Repeater	Completed Line	Line Break Completed				
Gel Plant	Staging Area	Water Source	Restricted Water Source					

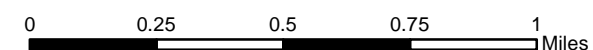



UTM Zone 10N  
NAD83

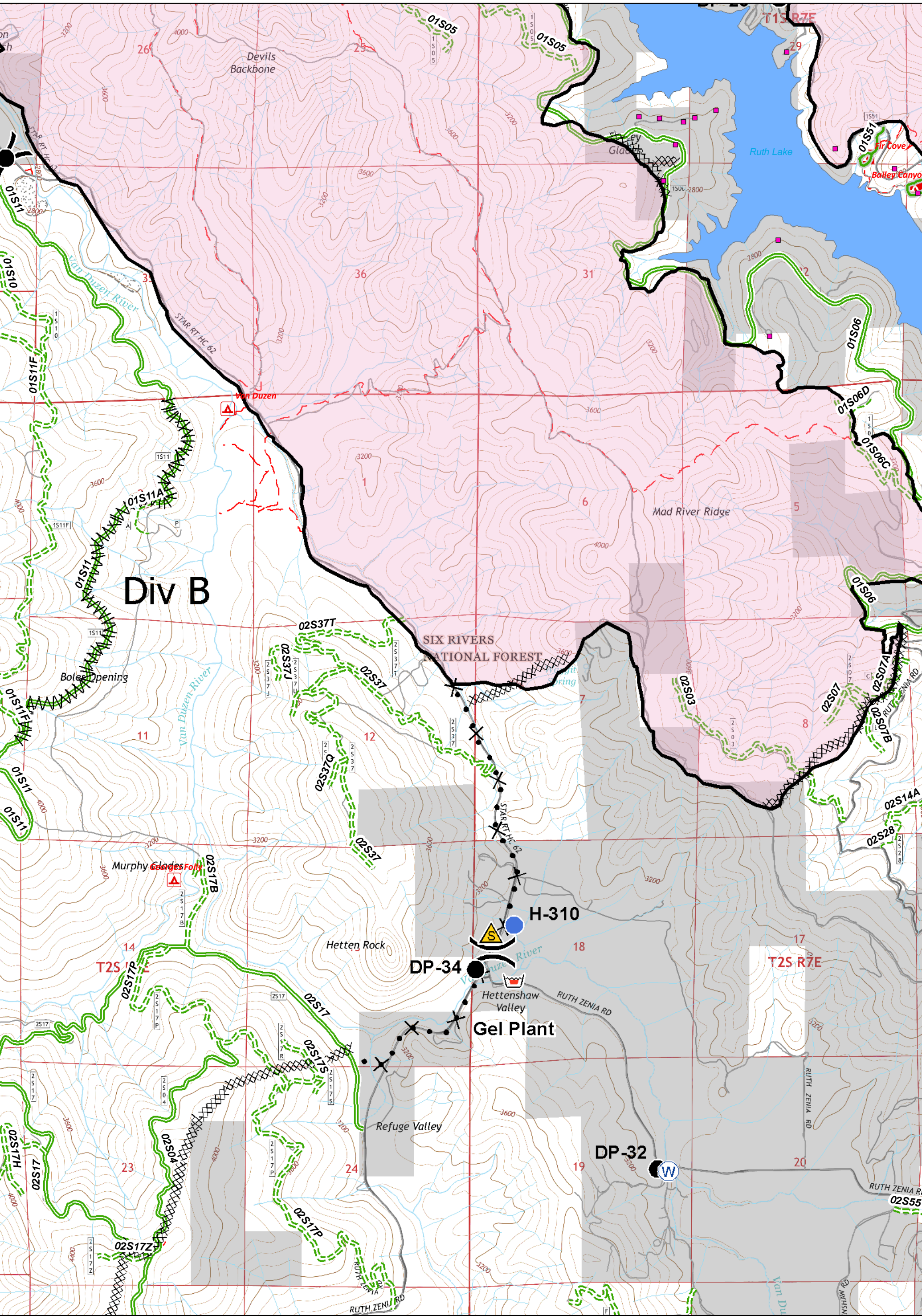




( ) Division	● Drop Point	■ Structures	— Uncontrolled Fire Edge	✕ Proposed Dozer Line	▭ Six Rivers National Forest Administrative Boundary	— Major Roads	— Dirt	— Closed
Branch	⊙ Helibase	▲ Safety Zone	⊗ Completed Dozer Line	H Handline	— Forest Trail	— Local Streets	— Paved	— 4WD
■ ICP	● Helispot	⊙ Repeater	— Completed Line	⊞ Line Break Completed				
☒ Gel Plant	⊙ Staging Area	⊙ Water Source						
	⊙ Restricted Water Source							





Div B

SIX RIVERS NATIONAL FOREST

H-310

DP-34

Gel Plant

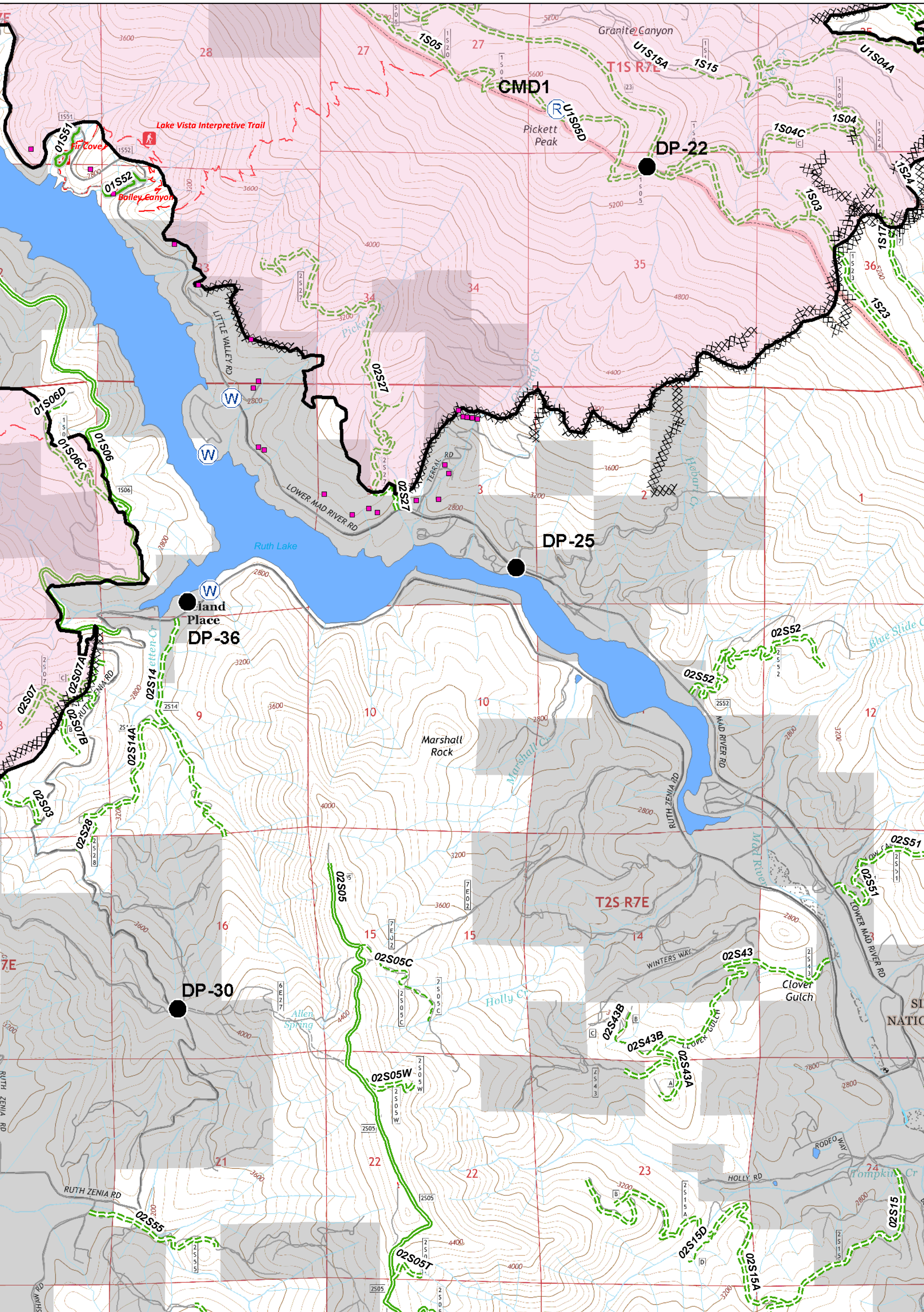
DP-32

Division	Drop Point	Structures	Uncontrolled Fire Edge	Proposed Dozer Line	Six Rivers National Forest Administrative Boundary	Major Roads	Dirt	Closed
Branch	Helibase	Safety Zone	Completed Dozer Line	Handline	Forest Trail	Local Streets	Paved	4WD
ICP	Helispot	Repeater	Completed Line	Line Break Completed				
Gel Plant	Staging Area	Water Source	Restricted Water Source					

0 0.25 0.5 0.75 1 Miles

UTM Zone 10N  
NAD83

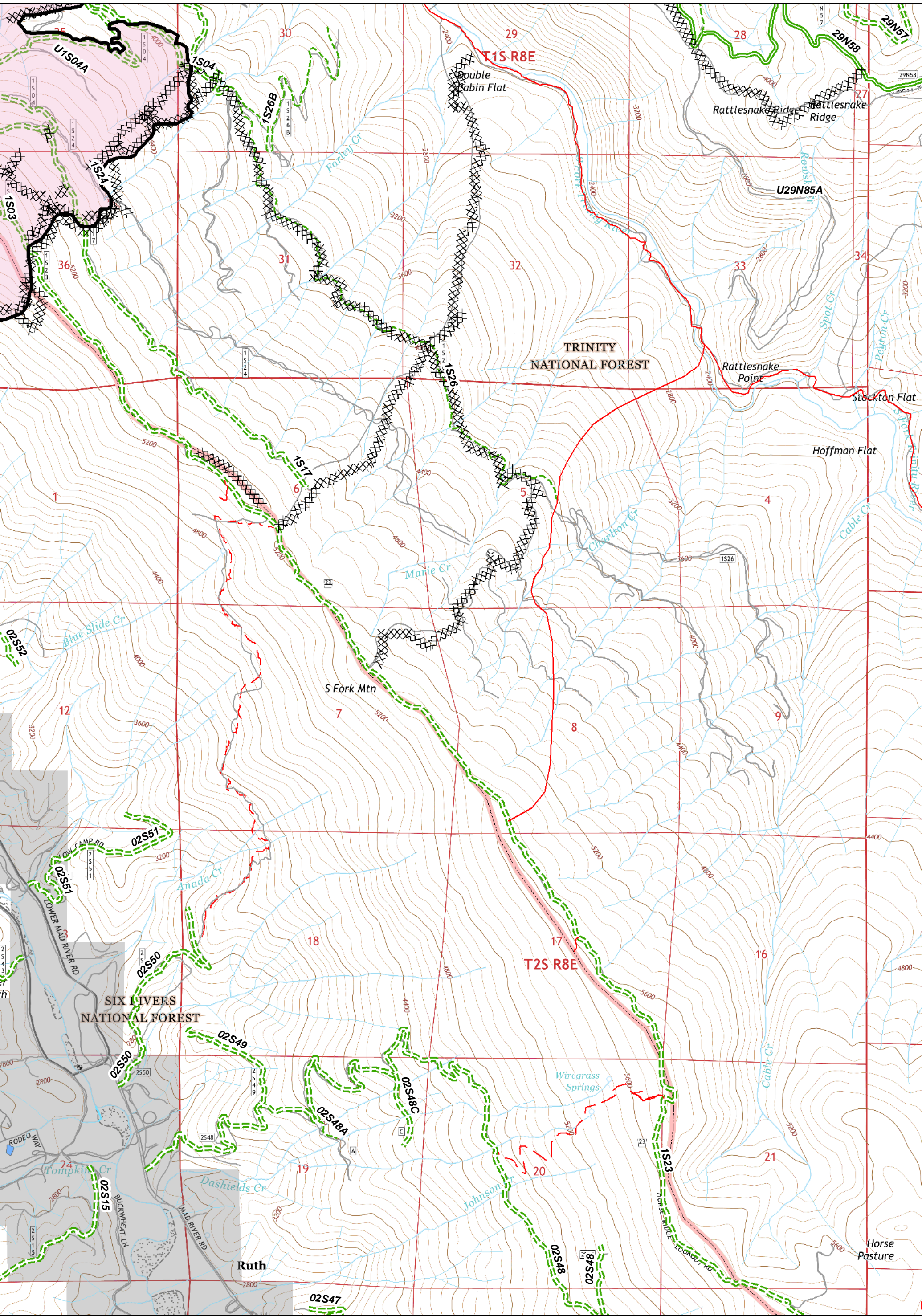




Division	Drop Point	Structures	Uncontrolled Fire Edge	Proposed Dozer Line	Six Rivers National Forest Administrative Boundary	Major Roads	Dirt	Closed
Branch	Helibase	Safety Zone	Completed Dozer Line	Handline	Forest Trail	Local Streets	Paved	4WD
ICP	Helispot	Repeater	Completed Line	Line Break Completed				
Gel Plant	Staging Area	Water Source	Restricted Water Source					

0 0.25 0.5 0.75 1 Miles  
 UTM Zone 10N NAD83

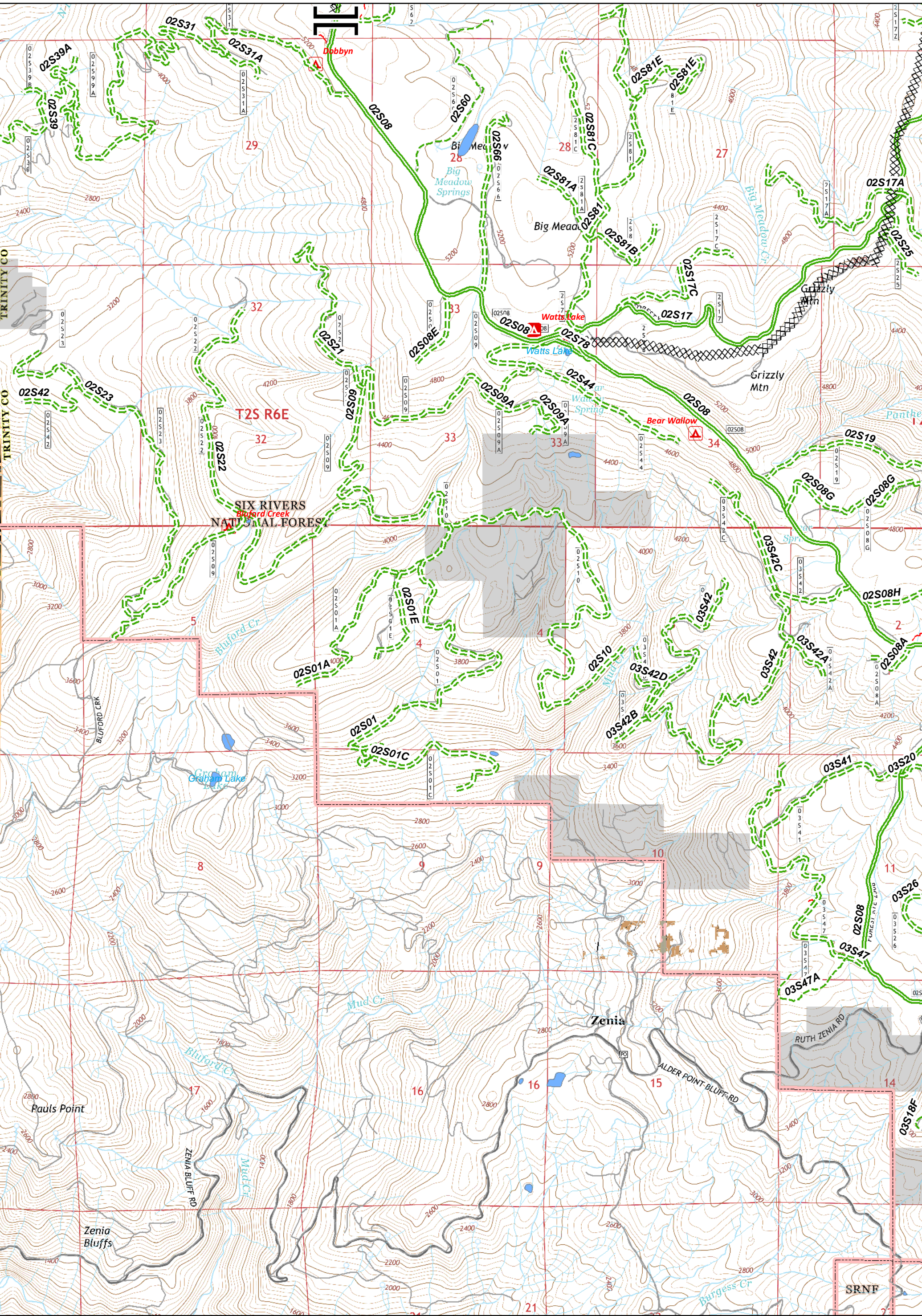




( ) Division	● Drop Point	■ Structures	— Uncontrolled Fire Edge	✕ Proposed Dozer Line	▭ Six Rivers National Forest Administrative Boundary	— Major Roads	— Dirt	— Closed
Branch	⊙ Helibase	▲ Safety Zone	⊗ Completed Dozer Line	⊙ Handline	— Forest Trail	— Local Streets	— Paved	— 4WD
■ ICP	⊙ Helispot	⊙ Repeater	— Completed Line	⊙ Line Break Completed				
🌳 Gel Plant	⊙ Staging Area	⊙ Water Source						
	⊙ Restricted Water Source							

UTM Zone 10N  
NAD83



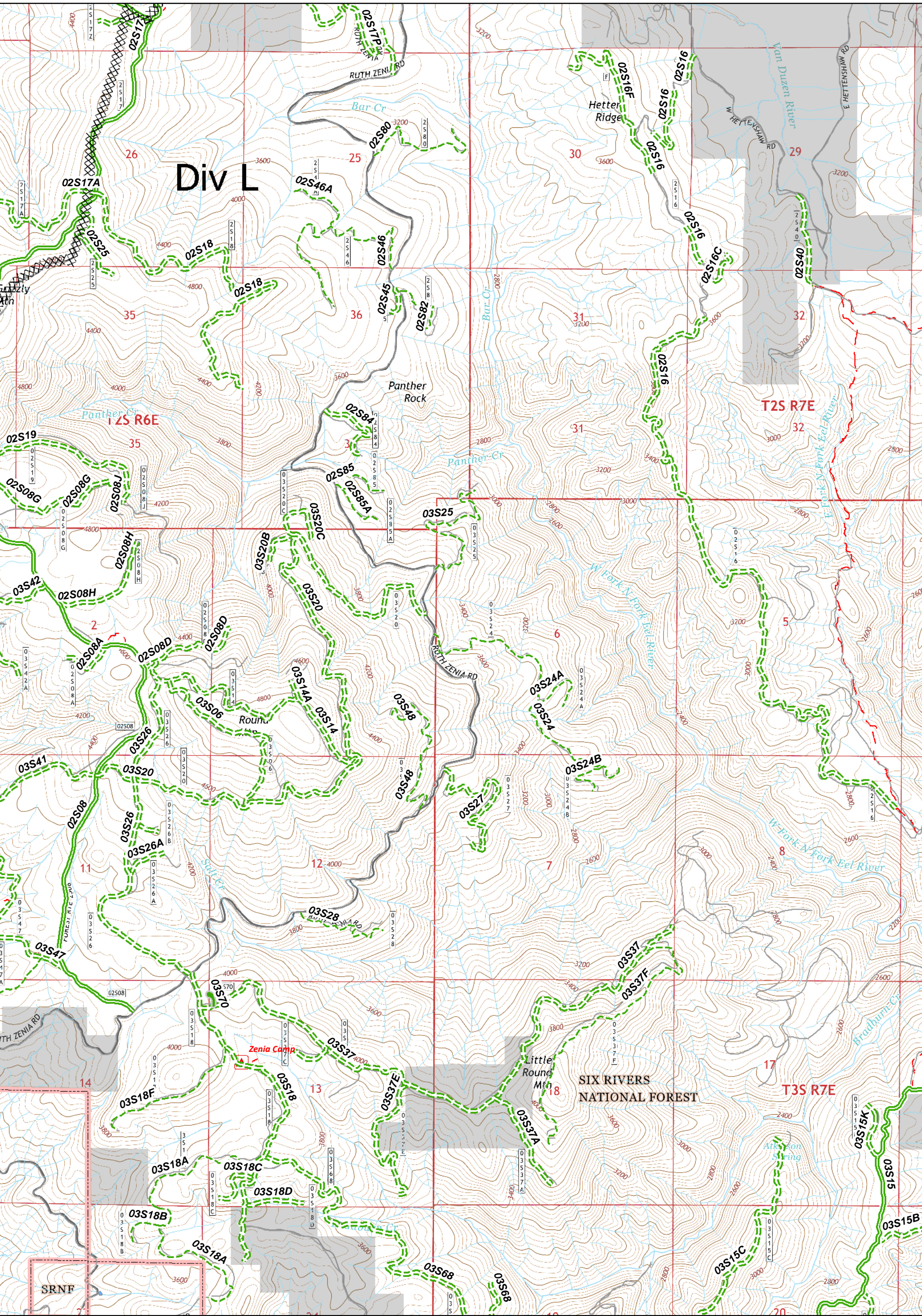


( ) Division	● Drop Point	■ Structures	— Uncontrolled Fire Edge	✕ Proposed Dozer Line	— Six Rivers National Forest Administrative Boundary	— Major Roads	— Dirt	— Closed
Branch	⊙ Helibase	▲ Safety Zone	— Completed Dozer Line	H Handline	— Forest Trail	— Local Streets	— Paved	— 4WD
■ ICP	● Helispot	⊙ Repeater	— Completed Line	M Line Break Completed				
☒ Gel Plant	⊙ Staging Area	⊙ Water Source						
	⊙ Restricted Water Source							

0 0.25 0.5 0.75 1 Miles

UTM Zone 10N  
NAD83



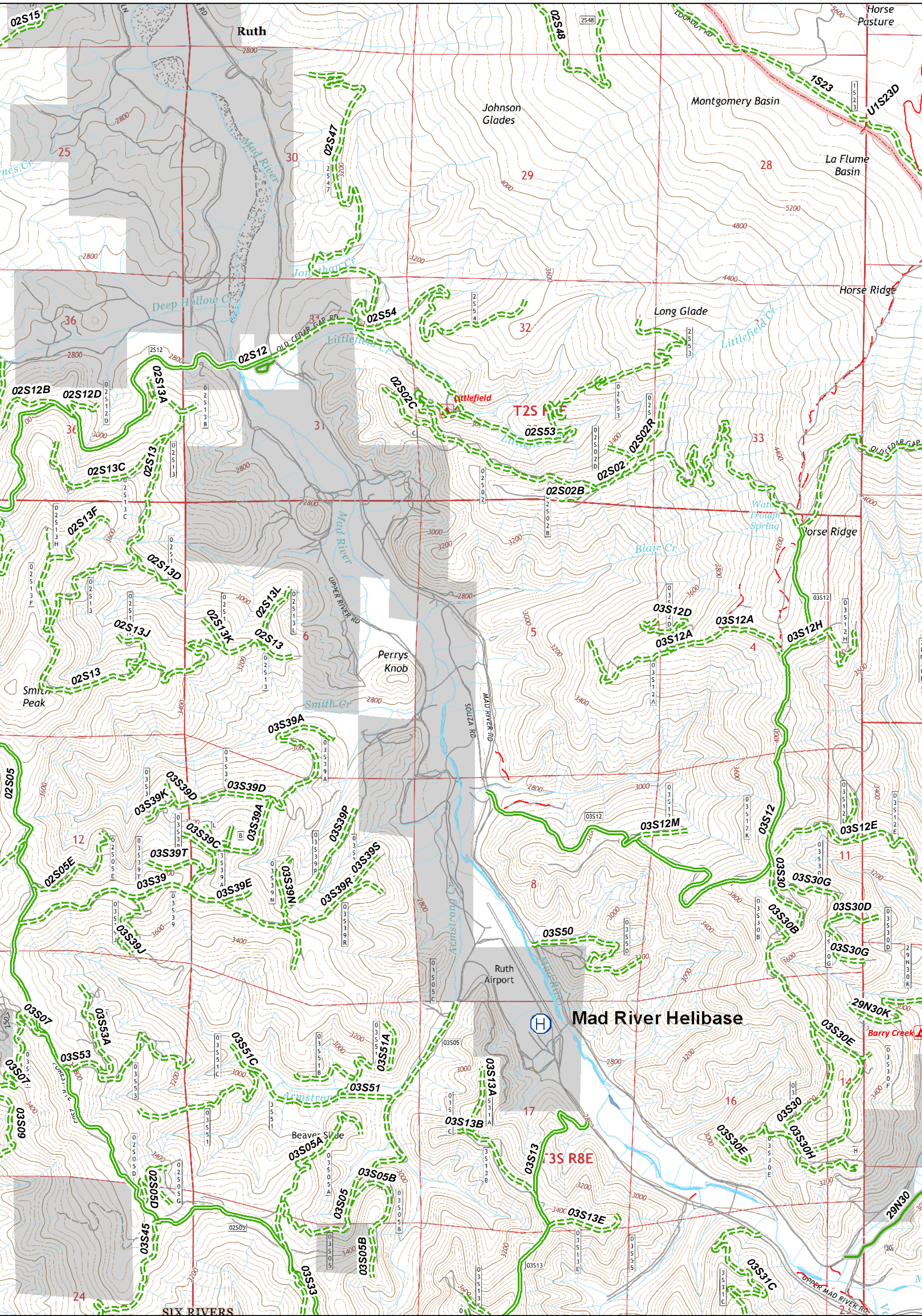


( ) Division	● Drop Point	■ Structures	— Uncontrolled Fire Edge	✕ Proposed Dozer Line	▭ Six Rivers National Forest Administrative Boundary	— Major Roads	— Dirt	— Closed
Branch	⊕ Helibase	▲ Safety Zone	⊗ Completed Dozer Line	H Handline	— Forest Trail	— Local Streets	— Paved	— 4WD
■ ICP	● Helispot	⊙ Repeater	— Completed Line	— Line Break Completed				
🌿 Gel Plant	⊙ Staging Area	⊙ Water Source						
	⊙ Restricted Water Source							

0 0.25 0.5 0.75 1 Miles

UTM Zone 10N  
NAD83





( ) Division	● Drop Point	■ Structures	— Uncontrolled Fire Edge	✕ Proposed Dozer Line	— Six Rivers National Forest Administrative Boundary	— Major Roads	— Dirt	— Closed
Branch	⊕ Helibase	▲ Safety Zone	— Completed Dozer Line	— Handline	— Forest Trail	— Local Streets	— Paved	— 4WD
■ ICP	⊙ Helispot	⊙ Repeater	— Completed Line	— Line Break Completed				
⊙ Gel Plant	⊙ Staging Area	⊙ Water Source						
	⊙ Restricted Water Source							

0 0.25 0.5 0.75 1 Miles

UTM Zone 10N  
NAD83