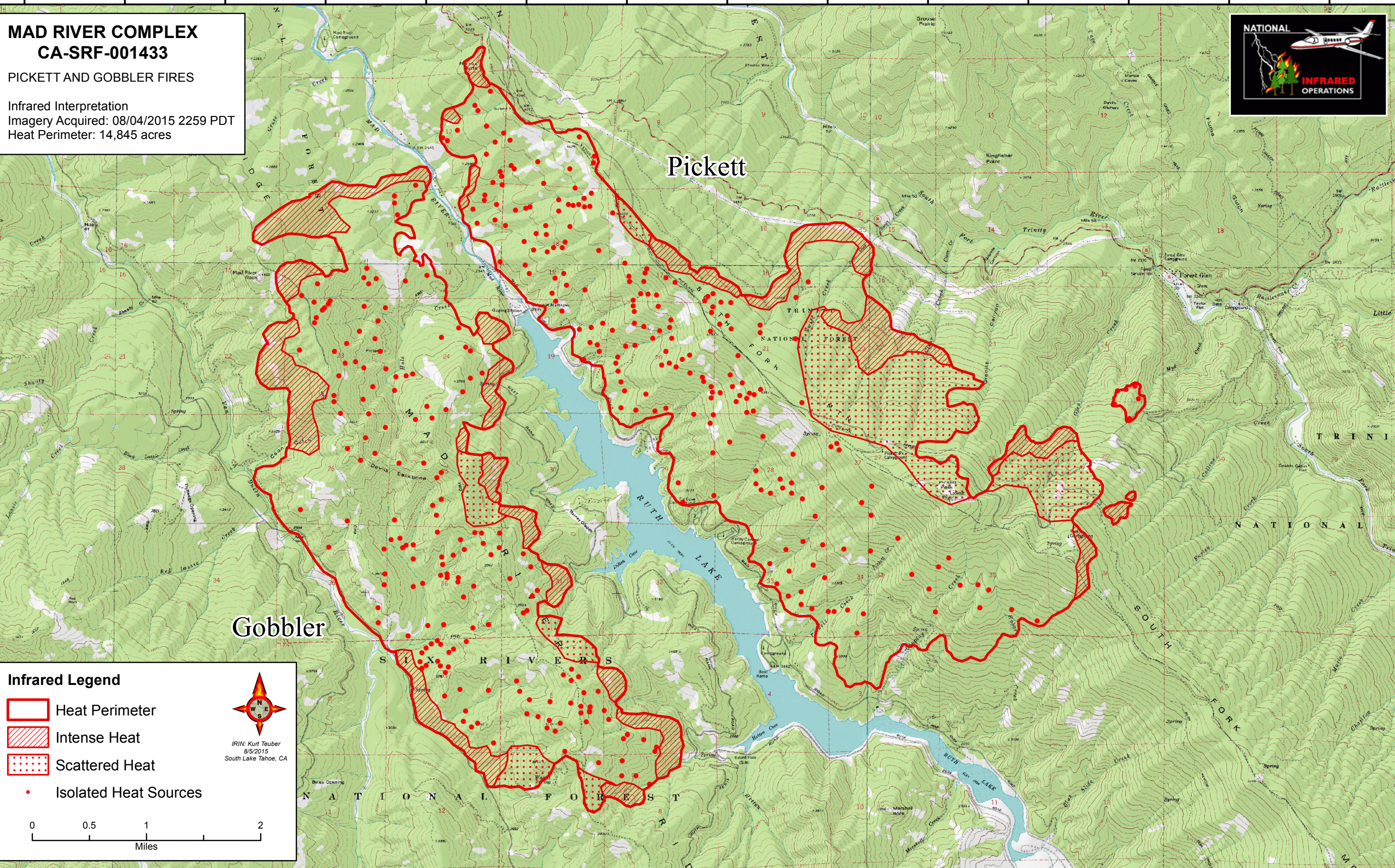


123°31'W 123°30'W 123°29'W 123°28'W 123°27'W 123°26'W 123°25'W 123°24'W 123°23'W 123°22'W 123°21'W 123°20'W 123°19'W 123°18'W





**MAD RIVER COMPLEX
CA-SRF-001433**
PICKETT AND GOBBLER FIRES
Infrared Interpretation
Imagery Acquired: 08/04/2015 2259 PDT
Heat Perimeter: 14,845 acres



Pickett

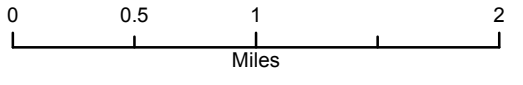
Gobbler

Infrared Legend

-  Heat Perimeter
-  Intense Heat
-  Scattered Heat
-  Isolated Heat Sources



IRIN: Kurt Teuber
8/8/2015
South Lake Tahoe, CA



123°31'W 123°30'W 123°29'W 123°28'W 123°27'W 123°26'W 123°25'W 123°24'W 123°23'W 123°22'W 123°21'W 123°20'W 123°19'W 123°18'W

40°24'N
40°23'N
40°22'N
40°21'N
40°20'N
40°19'N
40°18'N

40°24'N
40°23'N
40°22'N
40°21'N
40°20'N
40°19'N
40°18'N