

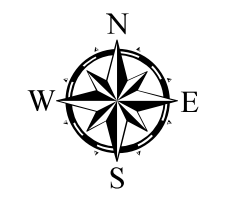
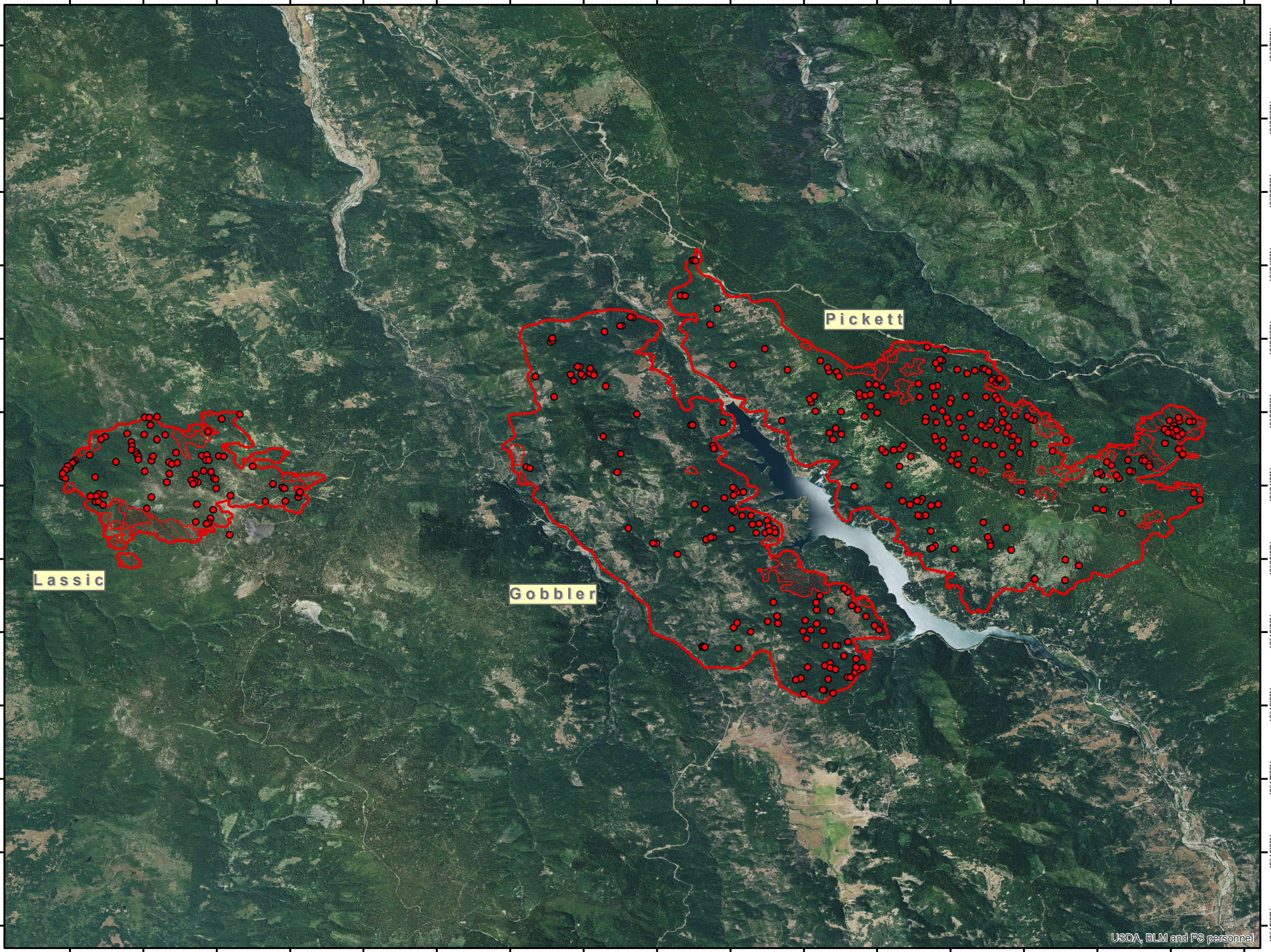
123°35'0"W 123°34'0"W 123°33'0"W 123°32'0"W 123°31'0"W 123°30'0"W 123°29'0"W 123°28'0"W 123°27'0"W 123°26'0"W 123°25'0"W 123°24'0"W 123°23'0"W 123°22'0"W 123°21'0"W 123°20'0"W 123°19'0"W

40°27'0"N
40°26'0"N
40°25'0"N
40°24'0"N
40°23'0"N
40°22'0"N
40°21'0"N
40°20'0"N
40°19'0"N
40°18'0"N
40°17'0"N
40°16'0"N
40°15'0"N

Mad River Complex Fire Infrared Heat Sources CA-SRF-001433 1:94,000

- Heat Perimeter
- Intense Heat Areas
- Scattered Heat Areas
- Isolated Heat Sources

GCS North American 1983



USDA, BLM and FS personnel

IR Interpreter: Brian Monroe
 IR interpreted acres: 19,963
 Date: 08/11/2015
 Time received the Image: 2311 hrs

123°35'0"W 123°34'0"W 123°33'0"W 123°32'0"W 123°31'0"W 123°30'0"W 123°29'0"W 123°28'0"W 123°27'0"W 123°26'0"W 123°25'0"W 123°24'0"W 123°23'0"W 123°22'0"W 123°21'0"W 123°20'0"W 123°19'0"W