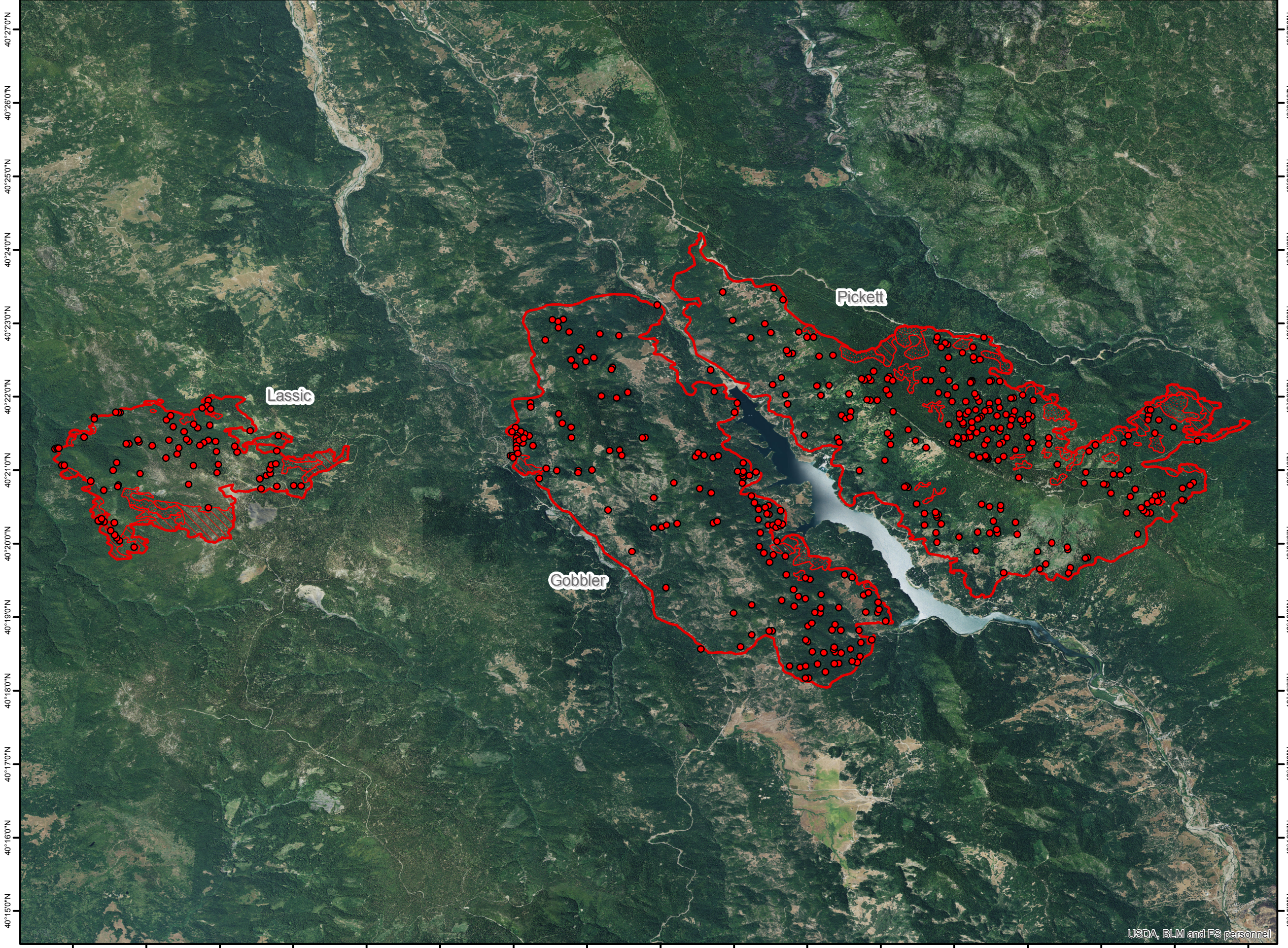






123°35'0"W 123°34'0"W 123°33'0"W 123°32'0"W 123°31'0"W 123°30'0"W 123°29'0"W 123°28'0"W 123°27'0"W 123°26'0"W 123°25'0"W 123°24'0"W 123°23'0"W 123°22'0"W 123°21'0"W 123°20'0"W 123°19'0"W

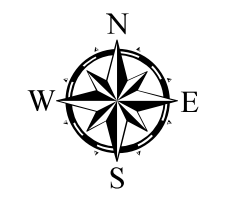


# Mad River Complex Fire Infrared Heat Sources CA-SRF-001433 1:94,000

-  Heat Perimeter
-  Intense Heat Areas
-  Scattered Heat Areas
-  Isolated Heat Sources

GCS North American 1983

Lassic - 2,860 acres  
Gobbler - 8,280 acres  
Pickett - 9,386 acres



IR Interpreter: Brian Monroe  
IR interpreted acres: 20,526  
Date: 08/12/2015  
Time received the Image: 0002 hrs

USDA, BLM and FS personnel